

I:\BMA Projects\VA Medical Center Bldg 01 - White River JCT\Sheets\CDs\A-501.dwg, 7/27/2012 1:52:08 PM, 30x42, 1:1

A

B

C

D

E

F

G

H

I

0  
6  
1  
0  
2  
0  
6  
0  
2  
6  
0  
4  
0  
8  
0  
4  
16  
0  
4  
8  
16

three inches = one foot  
one and one half inches = one foot  
one inch = one foot  
three quarters inch = one foot  
one half inch = one foot  
three eighths inch = one foot  
one quarter inch = one foot  
one eighth inch = one foot

A

B

C

D

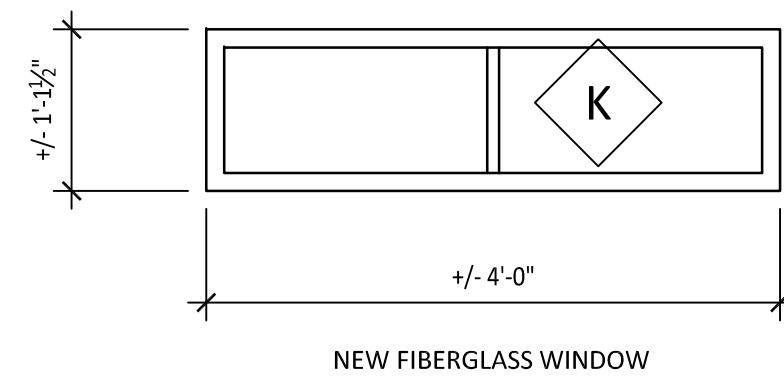
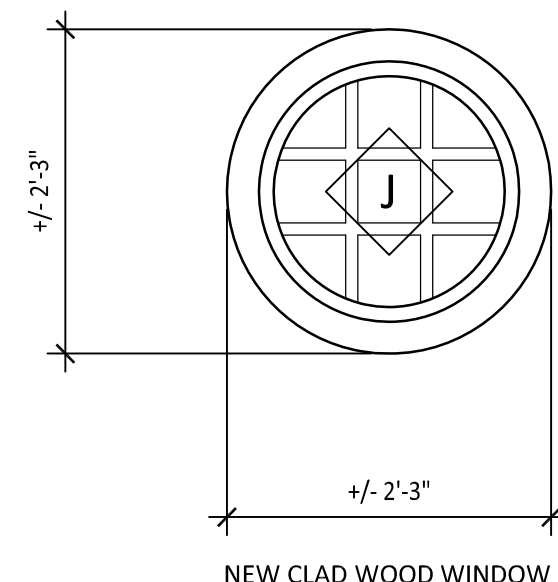
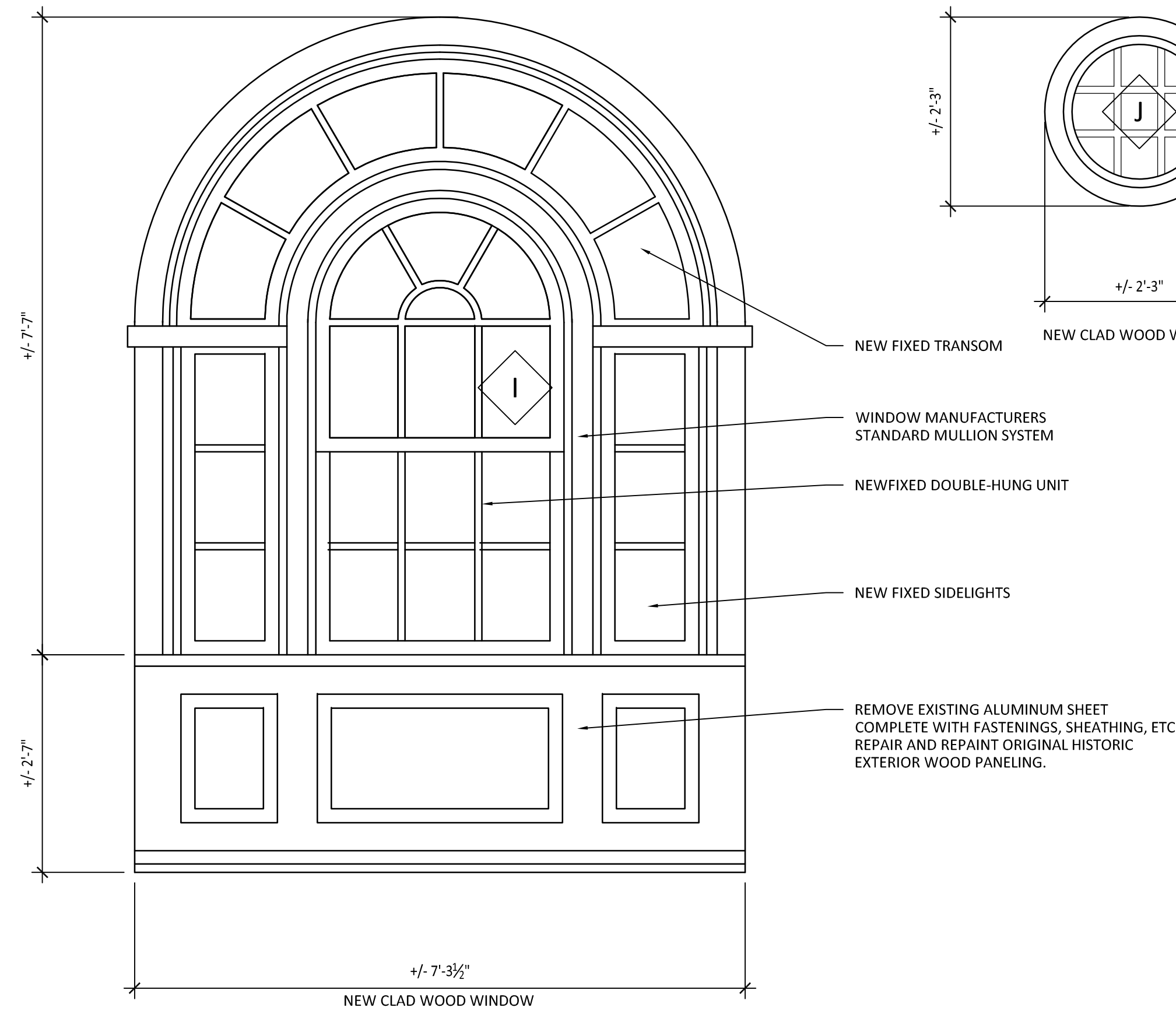
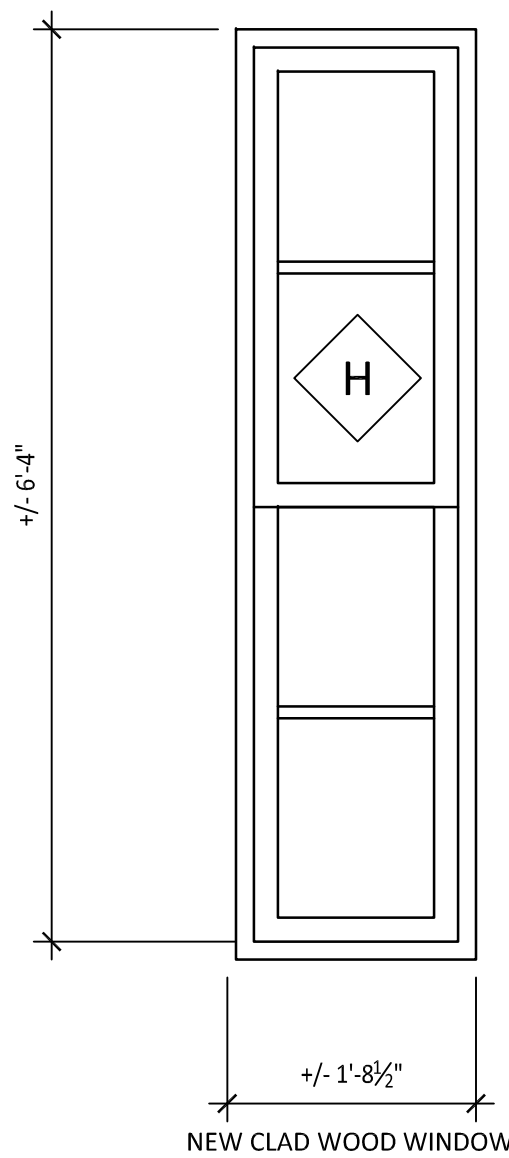
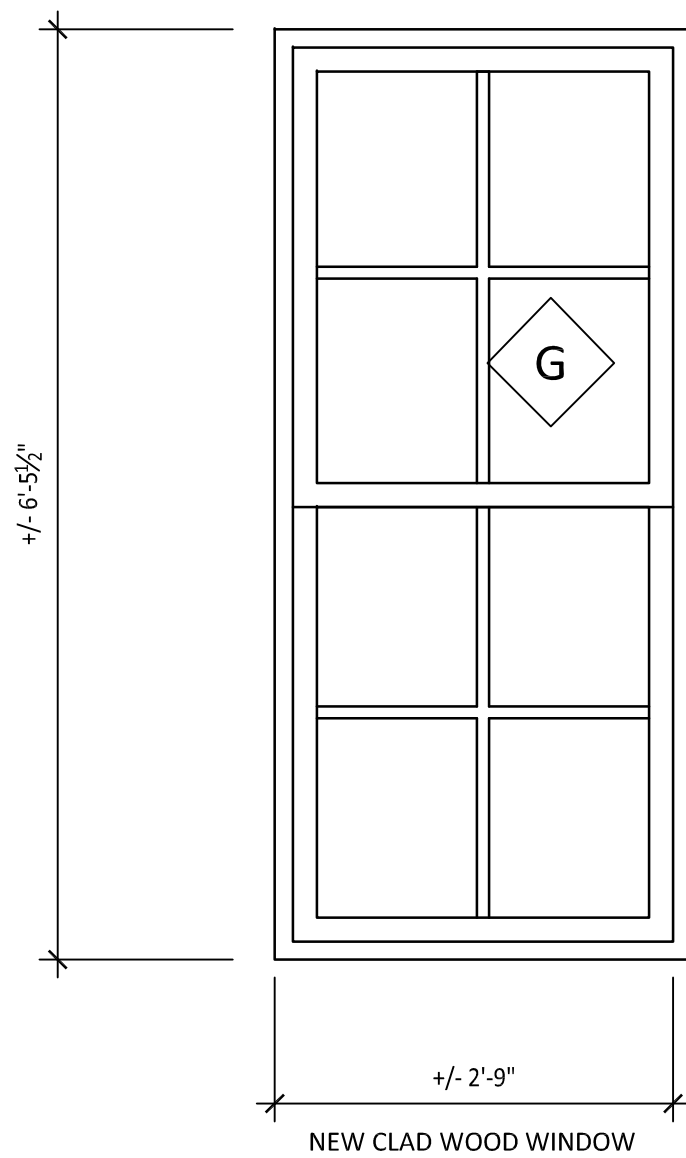
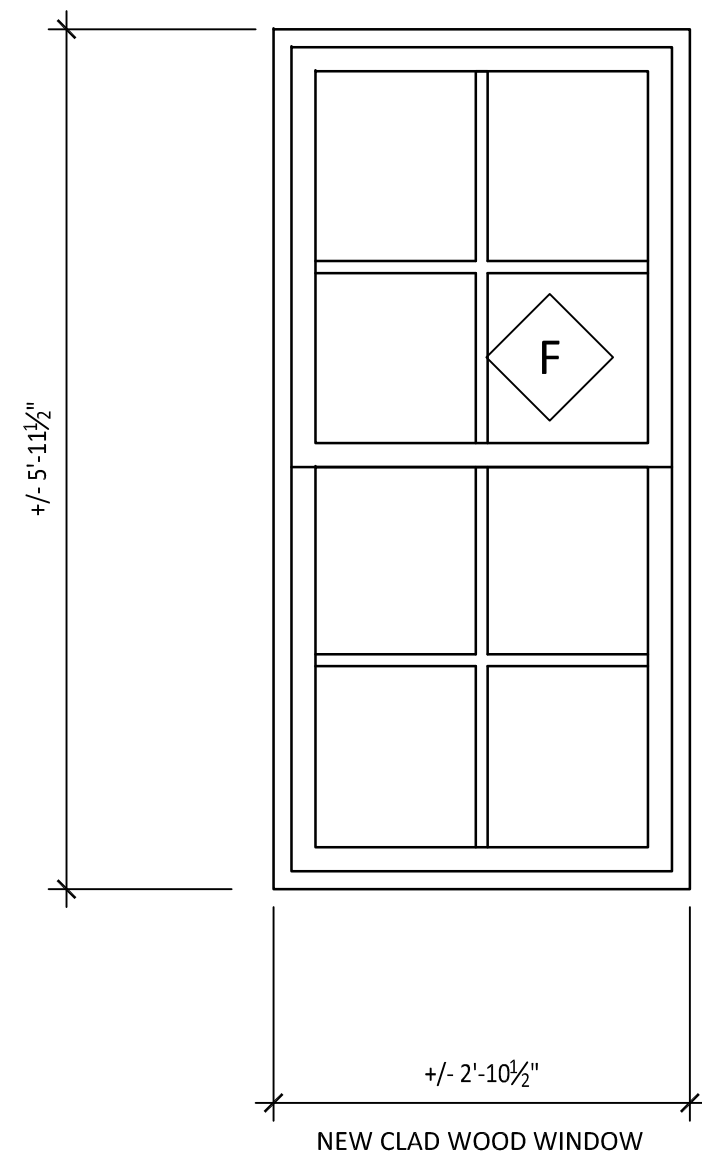
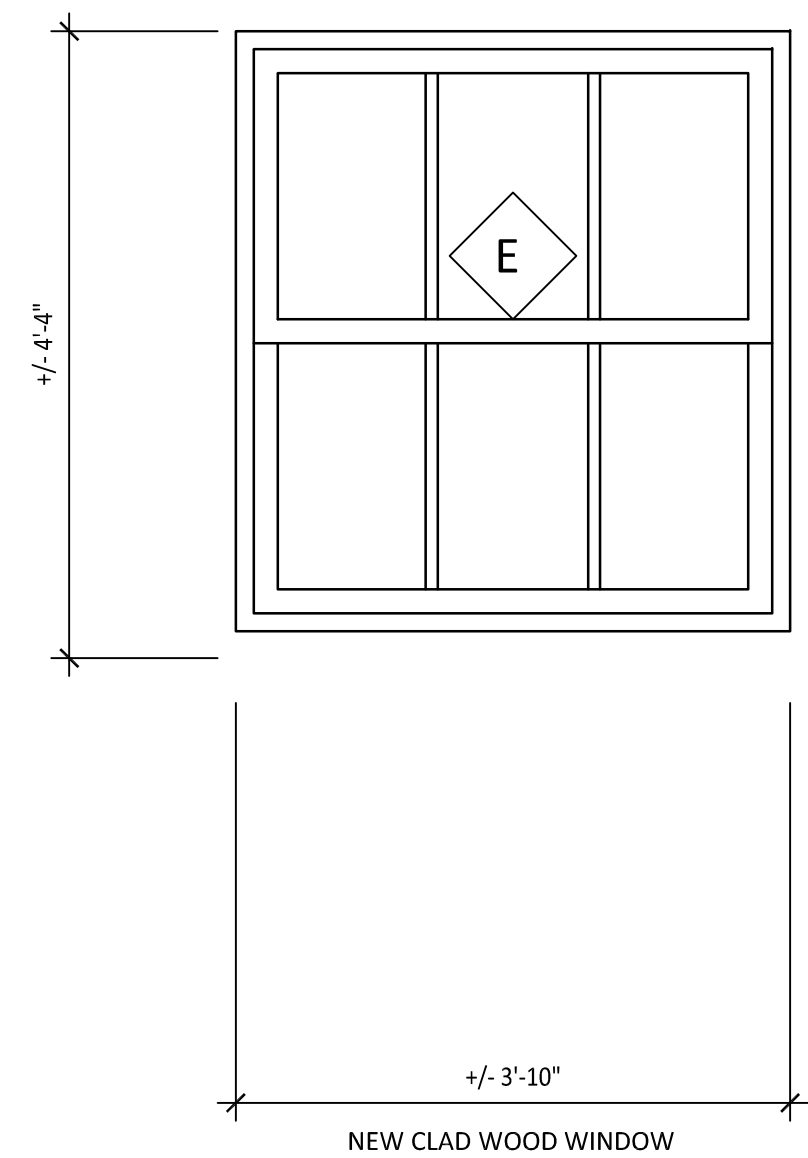
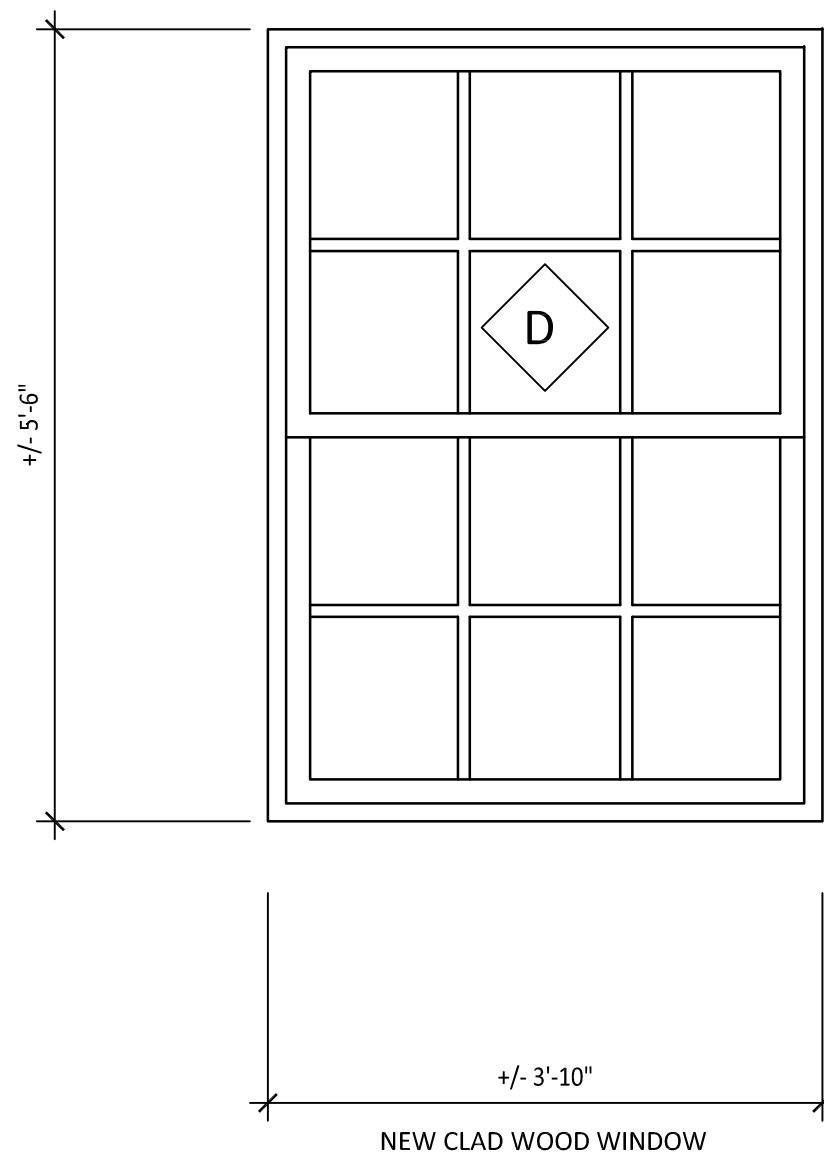
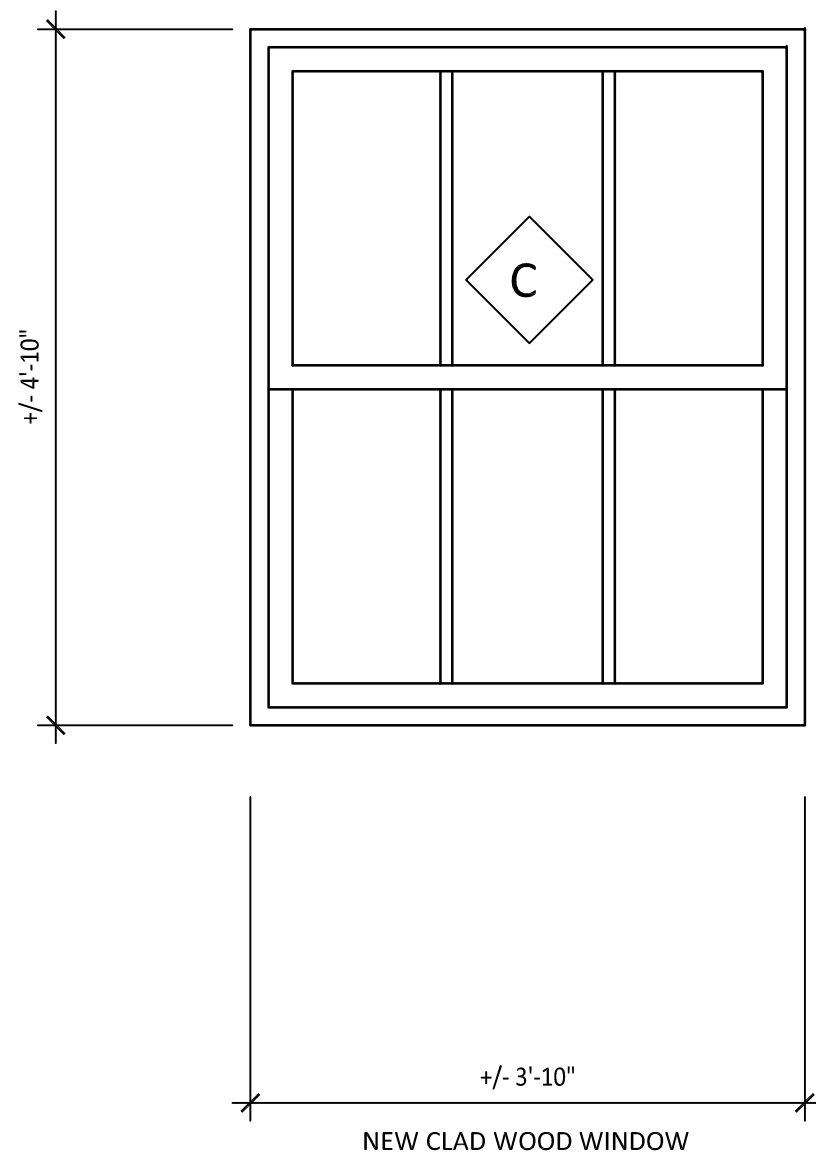
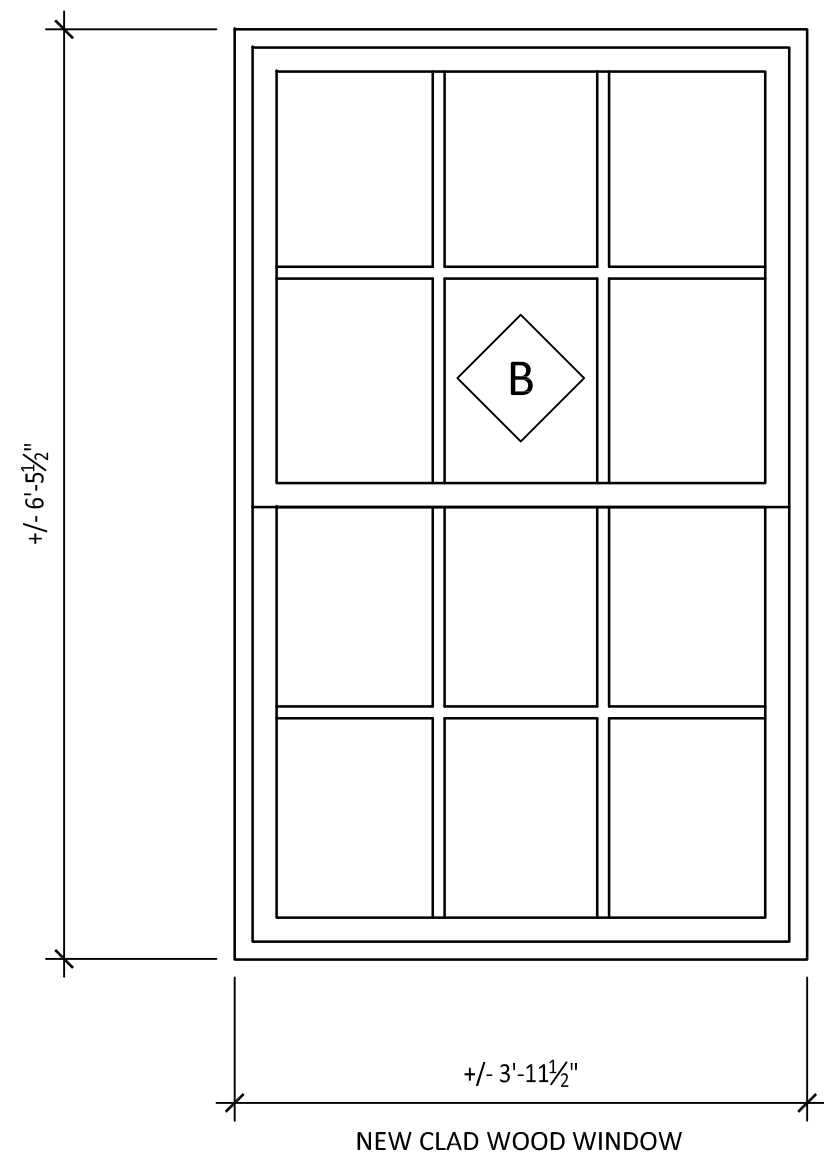
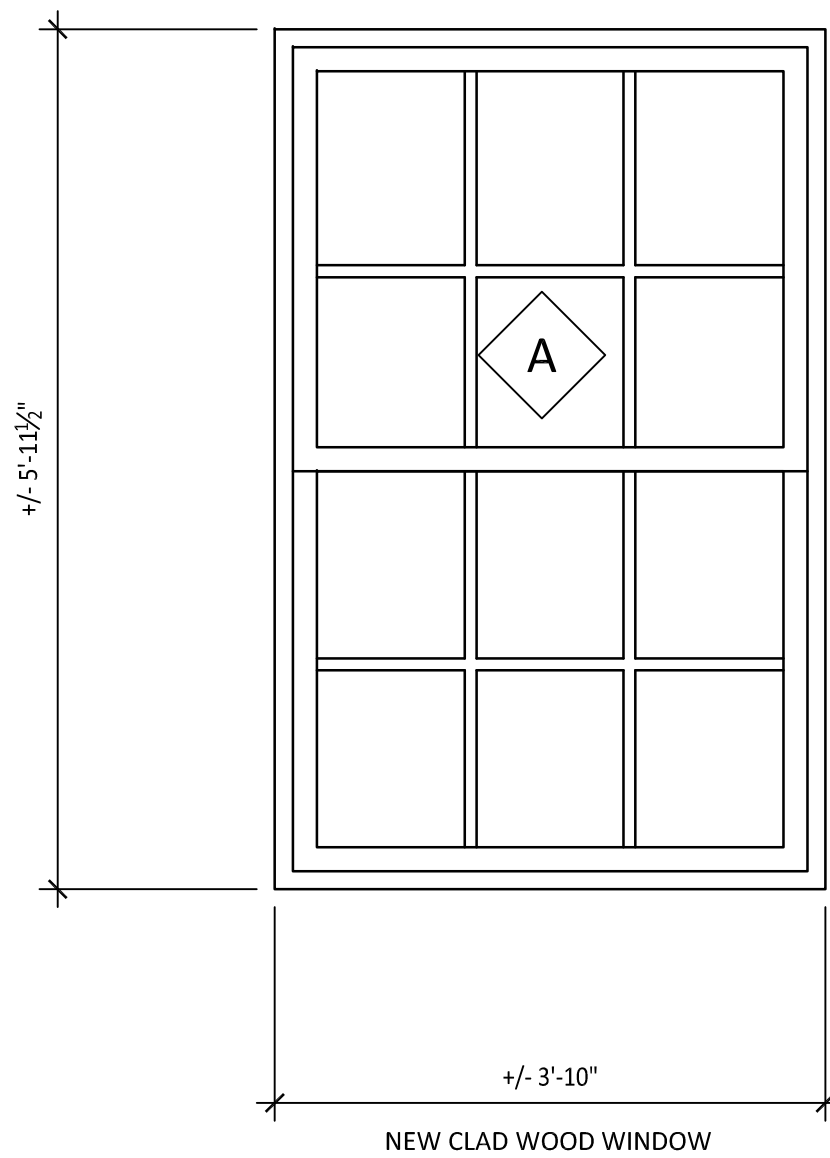
E

F

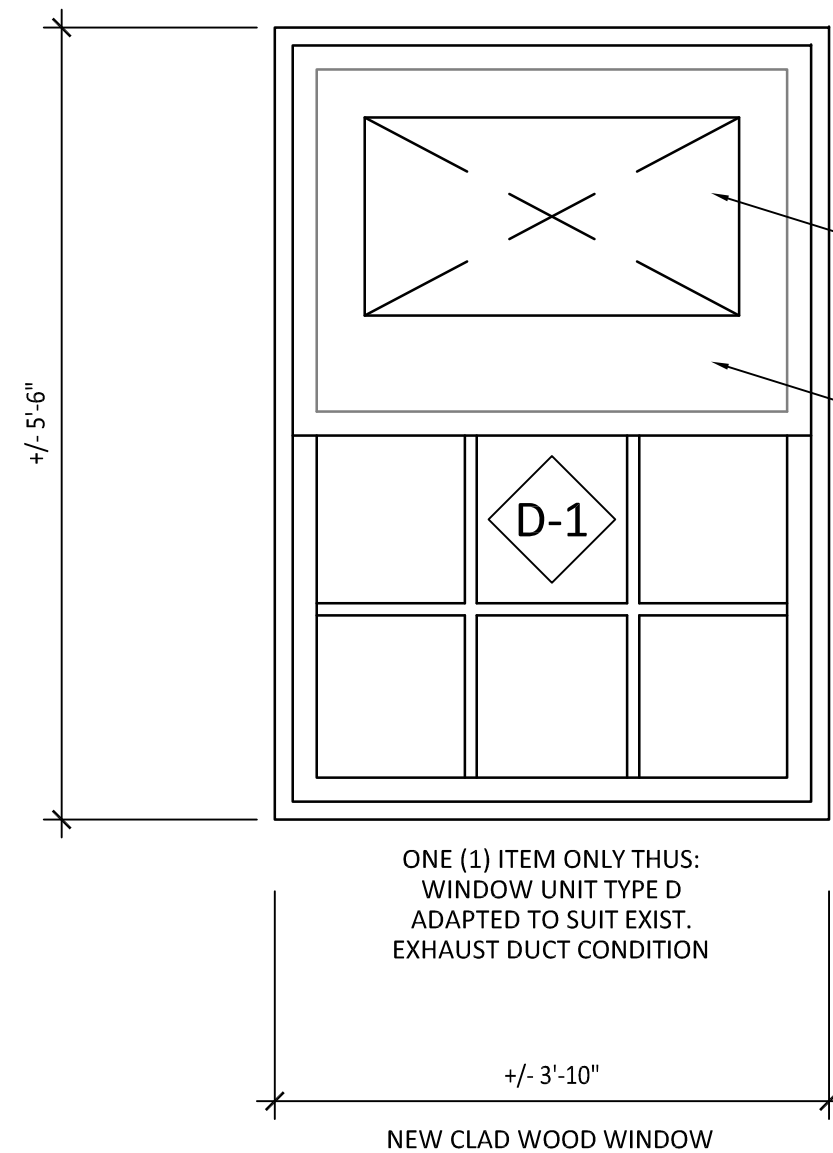
G

H

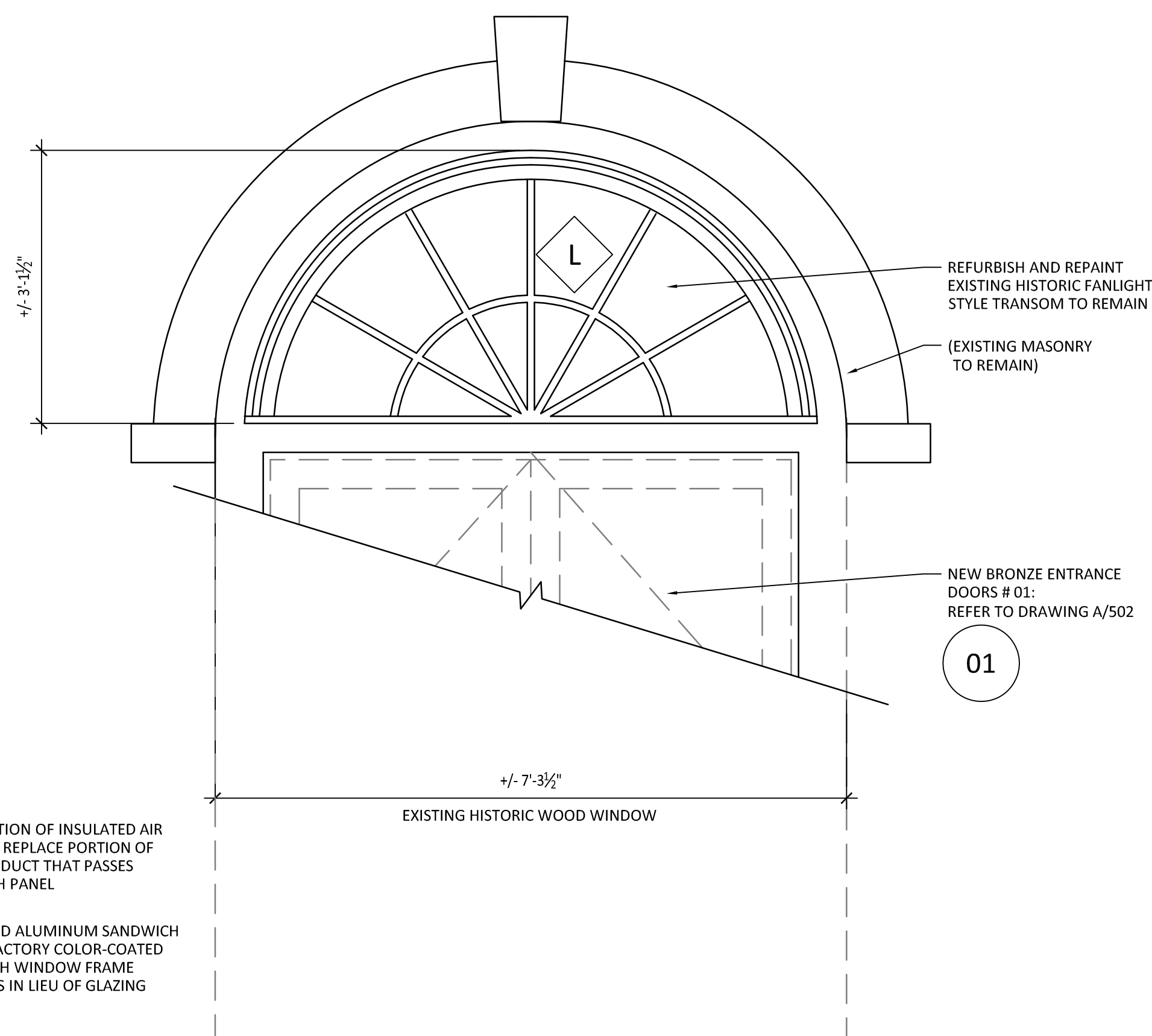
I



**BID ALTERNATES: WINDOW TYPE K:**  
BASE BID (BID ITEM 1): AS INDICATED.  
DEDUCT ALTERNATE 3: EXISTING TO REMAIN (BID ITEM 4)



CONSTRUCT NEW DUCT FROM INSULATED METAL SANDWICH PANEL TO AVOID CONDENSATION AND REDUCE HEAT TRANSFER AT PASSAGE THROUGH WINDOW. SEAL TO PANEL AND SEPARATE DISSIMILAR METALS TO PREVENT GALVANIC CORROSION.

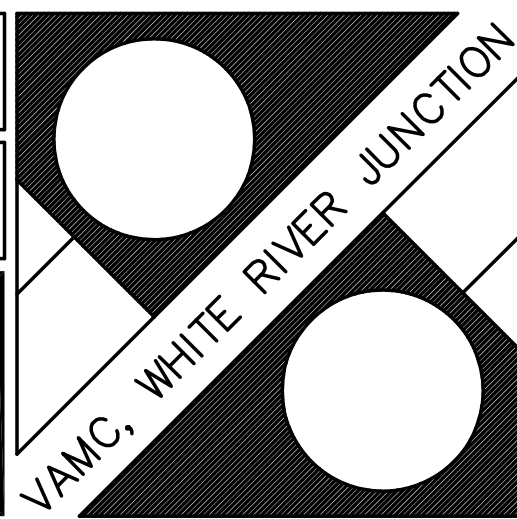


01

1 WINDOW UNIT ELEVATIONS  
A-501 3/4" = 1'-0"

NOTE: CONTRACTOR RESPONSIBLE TO VERIFY ALL DIMENSIONS

FINAL FOR CONSTRUCTION

Revisions	Date	ARCHITECT: <b>BMA</b> ARCHITECTS ■ PLANNERS 103 Wales Street, Rutland VT 05701 Ph: 802.773.8245 Fx: 802.773.8235 210 South Street, Bennington VT 05201 Ph: 802.445.7170 Fx: 802.445.7175 Toll Free: 800.754.9056 www.bma-architects.com	Professional Seal	Drawing Title WINDOW UNIT ELEVATIONS	Project Title WRJ VAMC BLDG. 1 WINDOW REPLACEMENT	Date MAY 02, 2011		Department of Veterans Affairs VA	
Approved: Project Manager	Building Number 1	Checked	Drawn	Approved: Service Chief	Location VAMC, WHITE RIVER JUNCTION V.T.	Project No. 405-09-114			Drawing No. A-501

1

2

3

4

5

6

7

8

9