

I:\BMA Projects\VA Medical Center Bldg 01 - White River JCT\Sheets\CDs\A-502.dwg, 7/27/2012 12:26:11 PM, 30x42, 1:1

A

B

C

D

E

F

A

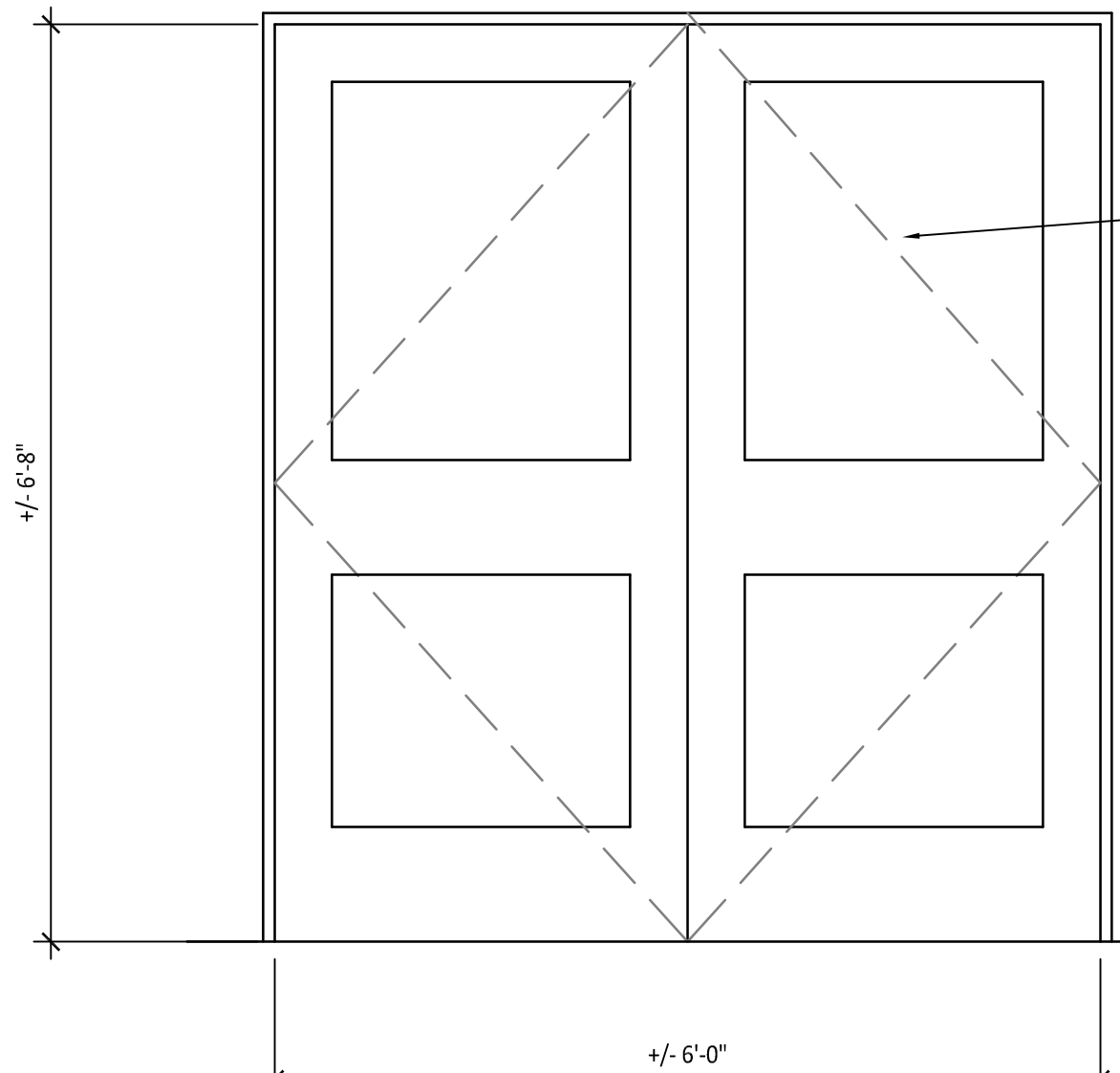
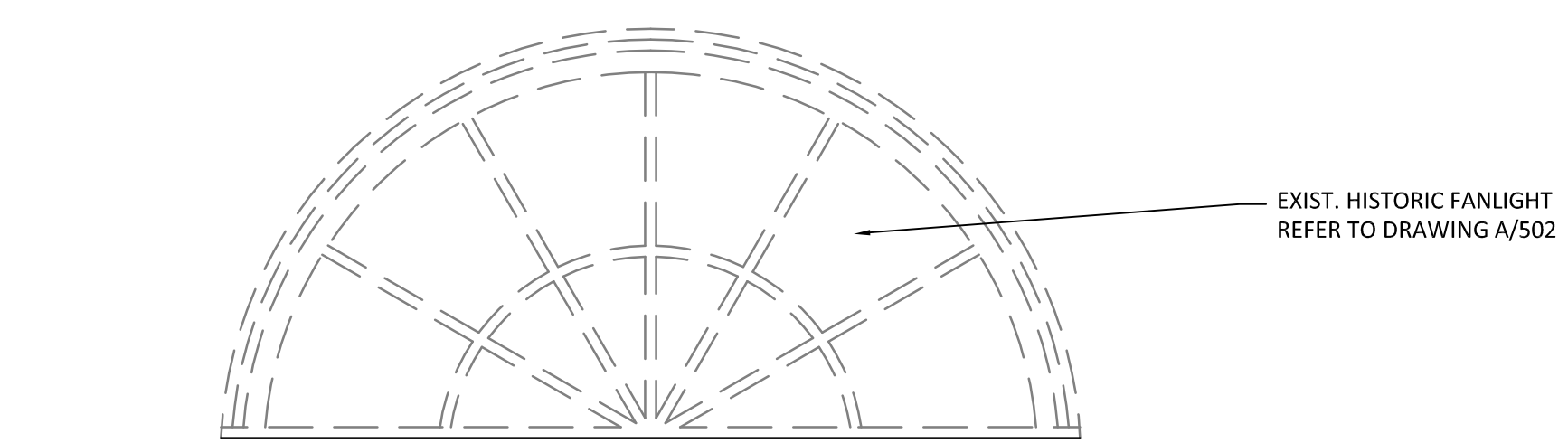
B

C

D

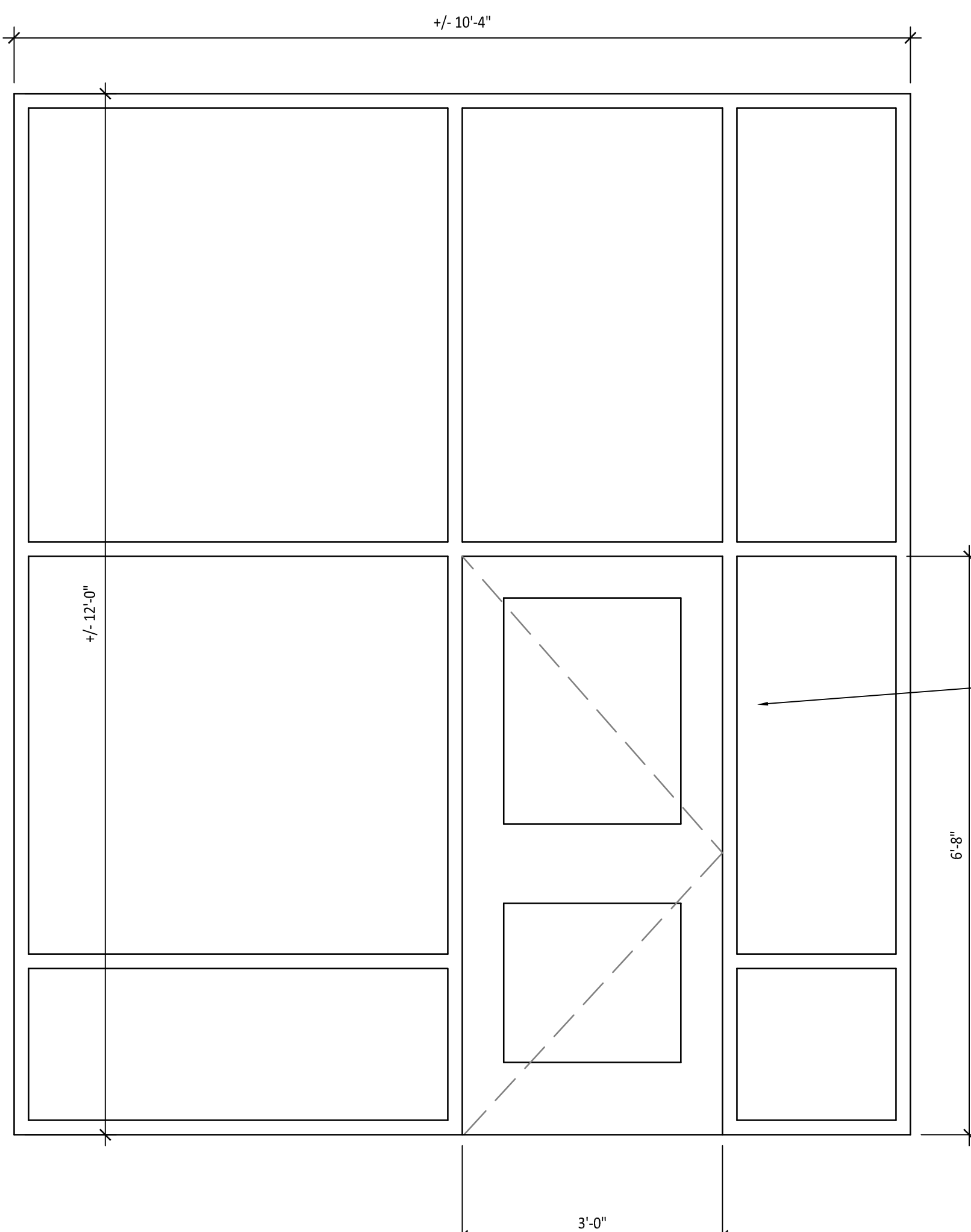
E

F



**DOOR ASSEMBLIES:**  
BASE BID (BID ITEM 1): BRONZE BALANCED DOOR SET  
DEDUCT ALTERNATE 1: ALUMINUM ENTRANCE ~~(BID ITEM 2)~~  
DEDUCT ALTERNATE 2: (BID ITEM 3) EXISTING TO REMAIN.  
**HARDWARE SETS:**  
BASE BID (BID ITEM 1): SET HW-8D-B  
DEDUCT ALTERNATE 1: SET HW-8D  
DEDUCT ALTERNATE 2: (BID ITEM 3) EXISTING TO REMAIN.

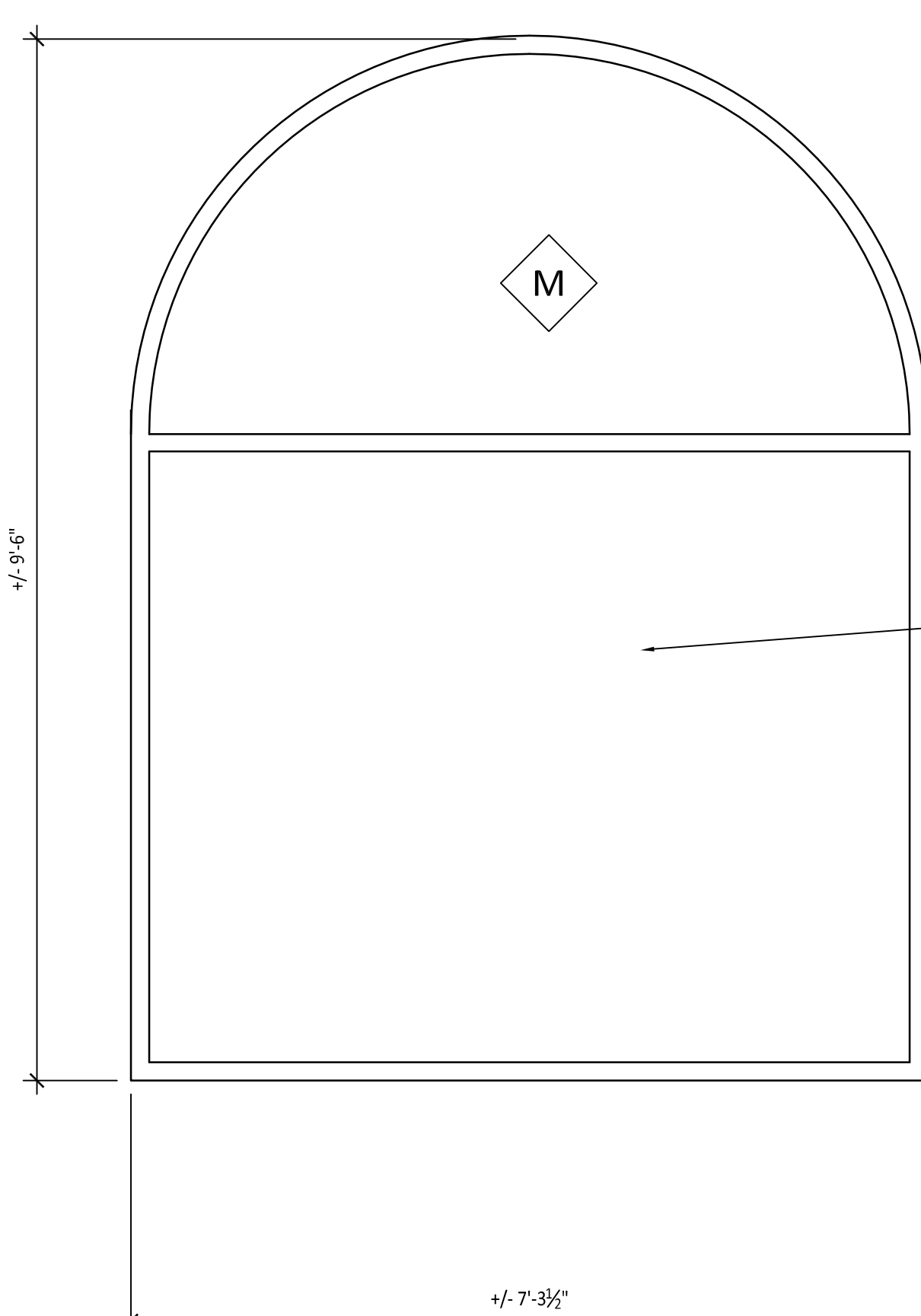
01 NEW BRONZE BALANCED ENTRANCE DOORS



**DOOR ASSEMBLIES:**  
BASE BID (BID ITEM 1): BRONZE BALANCED DOOR SET  
DEDUCT ALTERNATE 1: ALUMINUM ENTRANCE ~~(BID ITEM 2)~~  
DEDUCT ALTERNATE 2: (BID ITEM 3) EXISTING TO REMAIN.  
**HARDWARE SETS:**  
BASE BID (BID ITEM 1): SET HW-E4-0  
DEDUCT ALTERNATE 1: SET HW-E 4A  
DEDUCT ALTERNATE 2: (BID ITEM 3) EXISTING TO REMAIN.

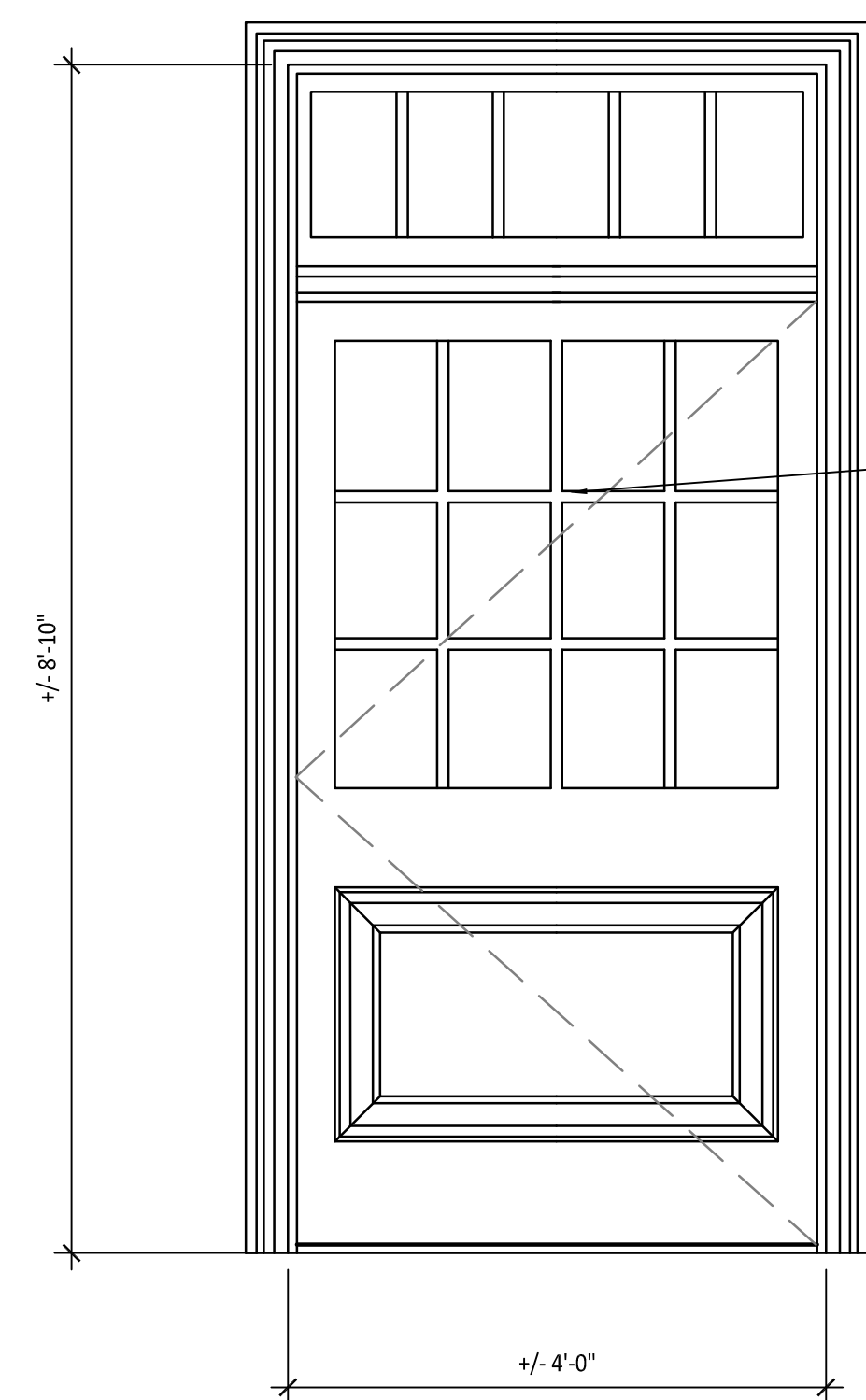
03 DOOR 03 SIMILAR/ OPPOSITE HAND

02 NEW THERMALLY IMPROVED BALANCED ENTRANCE DOORS AND SIDELIGHTS



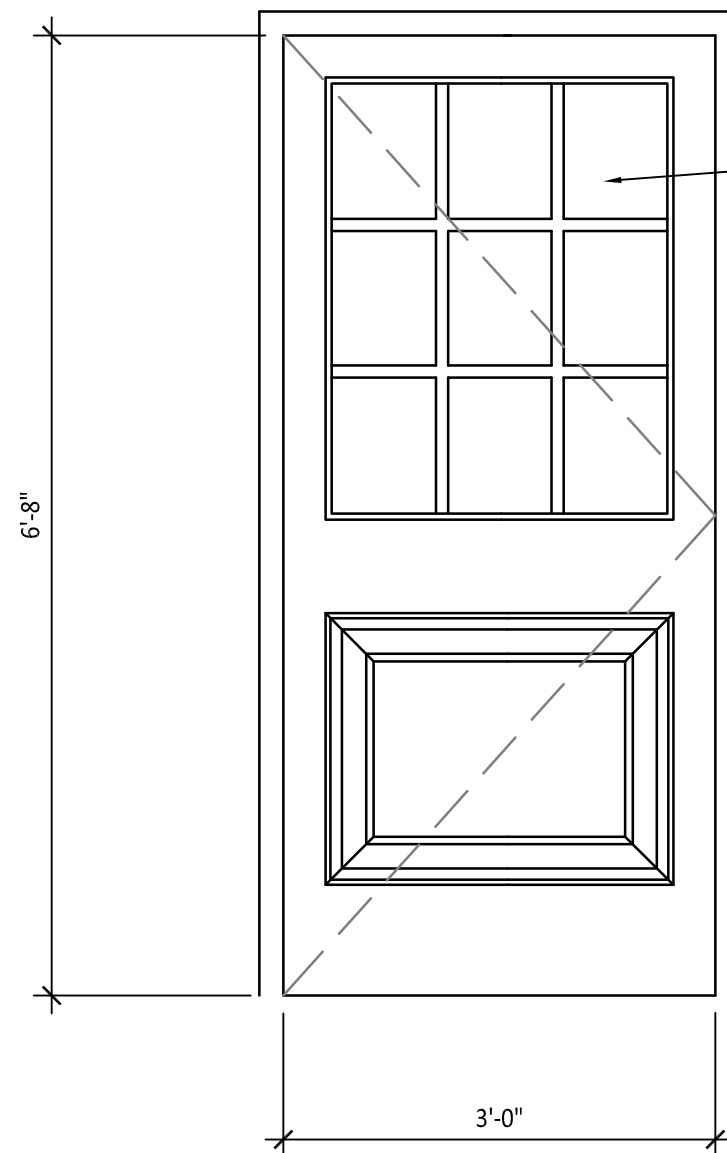
**DOOR ASSEMBLIES:**  
BASE BID (BID ITEM 1): BRONZE BALANCED MATCH DOOR SET  
DEDUCT ALTERNATE 1: ALUMINUM ENTRANCE ~~(BID ITEM 2)~~  
DEDUCT ALTERNATE 2: (BID ITEM 3) EXISTING TO REMAIN.

M NEW THERMALLY IMPROVED GLAZED ENTRANCE FRAMING



**HARDWARE SETS:**  
ALL BID ITEMS: SET HW-E2

04 NEW CLAD WOOD GLAZED DOOR AND TRANSOM



**DOOR ASSEMBLIES:**  
BASE BID (BID ITEM 1): AS INDICATED  
DEDUCT ALTERNATE 4: EXISTING TO REMAIN (BID ITEM 5)  
**HARDWARE SETS:**  
BASE BID (BID ITEM 1): SET HW-E4  
DEDUCT ALTERNATE 4: EXISTING TO REMAIN (BID ITEM 5)

06 DOOR 06 SIMILAR/ AT SECOND FLOOR

05 NEW CLAD WOOD EGRESS DOORS

1 EXTERIOR DOOR AND ENTRANCE SYSTEMS UNIT ELEVATIONS  
A-502 3/4" = 1'-0"

NOTE: CONTRACTOR RESPONSIBLE TO VERIFY ALL DIMENSIONS

FINAL FOR CONSTRUCTION

Revisions	Date	ARCHITECT: <b>BMA</b> ARCHITECTS ■ PLANNERS 103 Wales Street, Rutland VT 05701 Ph: 802.773.8245 Fx: 802.773.8235 210 South Street, Bennington VT 05201 Ph: 802.445.7170 Fx: 802.445.7175 Toll Free: 800.754.9056 www.bma-architects.com	 Professional Seal	Drawing Title DOOR AND STOREFRONT ELEVATIONS	Approved: Project Manager	Project Title WRJ VAMC BLDG. 1 WINDOW REPLACEMENT	Building Number 1	Checked	Drawn	Date MAY 02, 2011	Project No. 405-09-114	Drawing No. A-502	 VAMC, WHITE RIVER JUNCTION	VA Department of Veterans Affairs