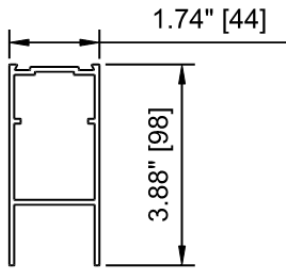


**STANLEY.**

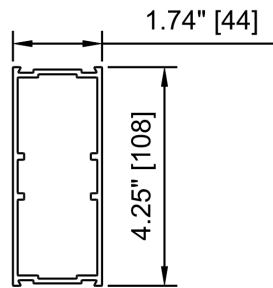
**Job Name :** VA Hospital Charleston  
**Location :**  
**Door Location :** Radiology Corridor

**Job# :** 142504  
**Product Qty :** 1  
**Product :** DURAGLIDE 5300 SS

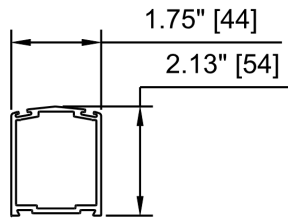
**Date:** Feb 16 2018



**BOTTOM RAIL, 4"**  
6063-T6

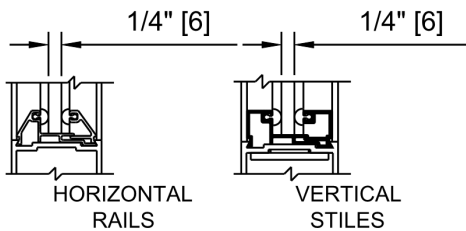


**MUNTIN BAR, 4"**  
6063-T6

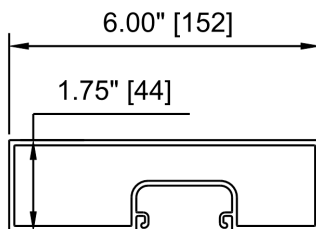


**STILE, NARROW**  
6063-T6

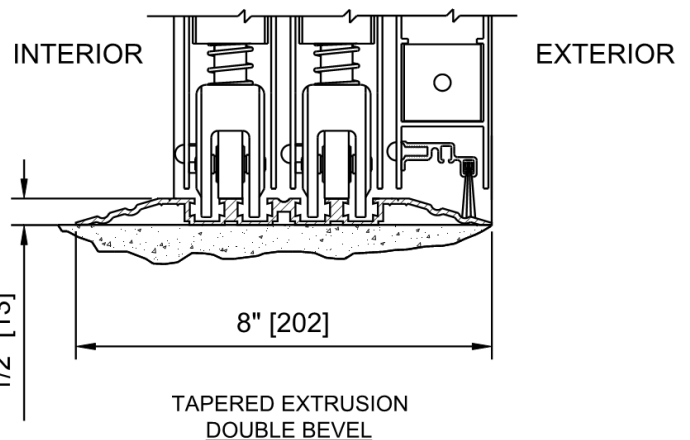
**TRANSOM VERTICAL** section not  
selected in the package



**PANEL GLAZING  
SECTIONS  
1/4" GLASS**



**JAMB, 6"**  
6063-T6



**DG 5300 TAPERED-  
SURFACE THRESHOLD**

**STANLEY.****Job Name :** VA Hospital Charleston  
**Location :**  
**Door Location :** Radiology Corridor**Job# :** 142504  
**Product Qty :** 1  
**Product :** DURAGLIDE 5300 SS**Date:** Feb 16 2018**Door Details**

Package Width	Masonry/Rough Opening Width	Clear Door Opening Width	Emergency Breakout	Package Height	Rough Opening Height
92.5000"	93.0000"	50.2297"	83.2500"	93.5000"	93.7500"

**Options****Finish**

Door Package Color                      Dark Bronze Anodized

**Locking / Access Control**Cylinder Options                      Standard  
Lock Configuration                      Cylinder/Thumbturn Required  
Lock Config Options                      One Point Lock**Options and Accessories**Threshold Option                      Double Bevel 8" (Continuous)  
Switch and Control Options                      Door Position Switch  
Switch Type                      Rotary Switch - 6 Position**Glass Specifications**SX Glass Thickness                      0.2500"  
SO Glass Thickness                      0.2500"  
SXS Glass Thickness                      0.2500"**Inclusions/Exclusions****Inclusions**Door package installation.  
Demolition of existing storefront.  
Glass & Glazing.  
Caulking.**Exclusions**Recess prep & grout for track or threshold.  
Painting, patching & flooring work.  
120 volts AC to inside auto door header 5 amp min.  
Back boxes & low voltage wiring from any control to inside auto door header.  
Push plates (Hardwired).  
Push plates (Wireless).  
After hours premium labor.  
Delegated Design.  
Structural Review (no seismic review).  
Perimeter structural support / wood blocking for sliding door packages.  
Permits & inspections by others.  
Prevailing Wage.  
Certified Payroll.  
Cleaning and protection of installed material.**Shop Drawing / Submittal Review****Date:**\_\_\_\_\_☐ No Exceptions Taken                      ☐ Furnish with Changes Noted                      ☐ Review and Resubmit                      ☐ Rejected

SUBMITTAL WAS REVIEWED FOR GENERAL CONFORMANCE TO THE CONTRACT DOCUMENTS. THE GENERAL CONTRACTOR IS RESPONSIBLE FOR CONFIRMING AND CORRELATING DIMENSIONS AT JOBSITE FOR TOLERANCE, CLEARANCE, QUANTITIES, FABRICATION, TECHNIQUES OF CONSTRUCTION, COORDINATION OF THIS WORK WITH THE WORK OF OTHER TRADES, AND FULL COMPLIANCE WITH THE CONTRACT DOCUMENTS.

By:\_\_\_\_\_

Company:\_\_\_\_\_