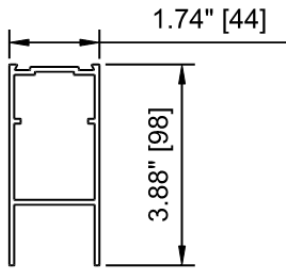


STANLEY.

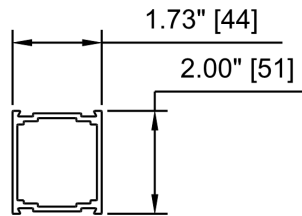
Job Name : VA Primary Care Myrtle Beach
Location :
Door Location : Exterior

Job# : 142097
Product Qty : 1
Product : DURAGLIDE 2000 BP

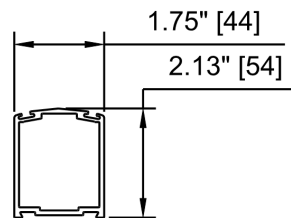
Date: Feb 16 2018



BOTTOM RAIL, 4"
6063-T6

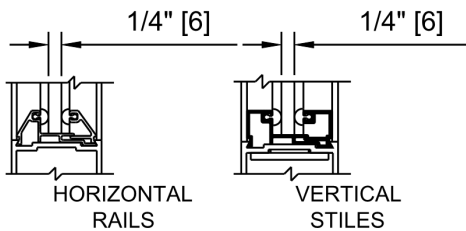


MUNTIN BAR, 2"
6063-T6

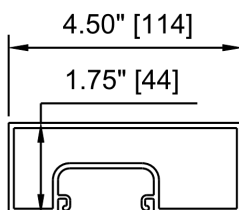


STILE, NARROW
6063-T6

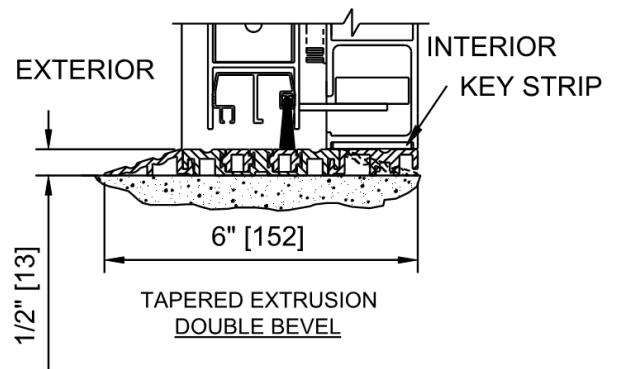
**TRANSOM VERTICAL section not
selected in the package**



**PANEL GLAZING
SECTIONS
1/4" GLASS**



JAMB, 4 1/2"
6063-T6



**THRESHOLD-TAPERED EXTRUSION
4 1/2" FRAME**
(DOUBLE BEVEL THROUGHOUT DOOR OPENING)

STANLEY.**Job Name :** VA Primary Care Myrtle Beach
Location :
Door Location : Exterior**Job# :** 142097
Product Qty : 1
Product : DURAGLIDE 2000 BP**Date:** Feb 16 2018**Door Details**

Package Width	Masonry/Rough Opening Width	Clear Door Opening Width	Emergency Breakout	Package Height	Rough Opening Height
144.0000"	144.5000"	60.3020"	67.5520"	90.0000"	90.2500"

Options**Finish**

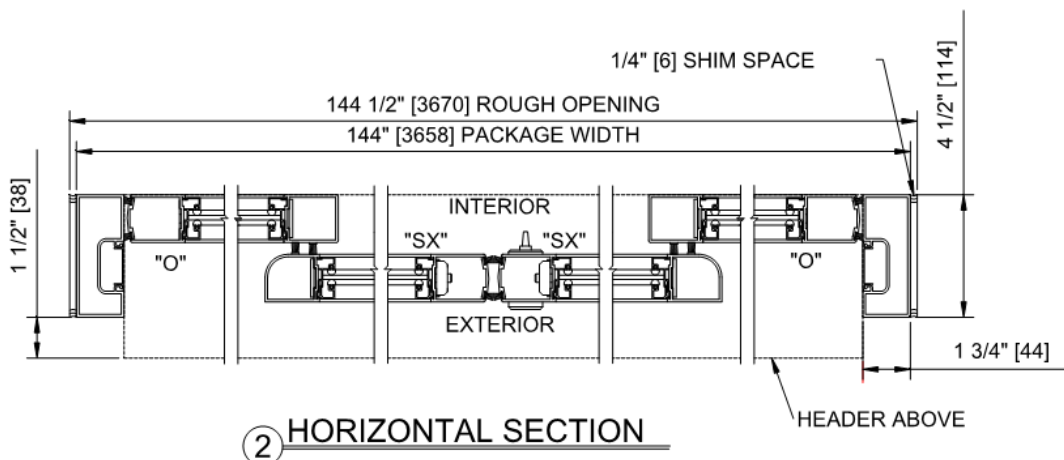
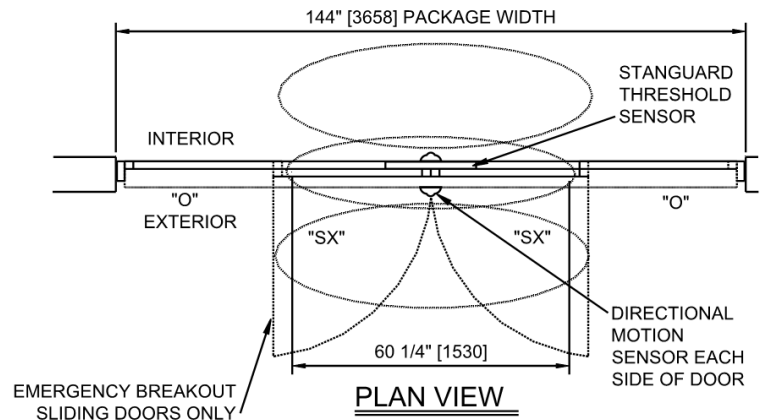
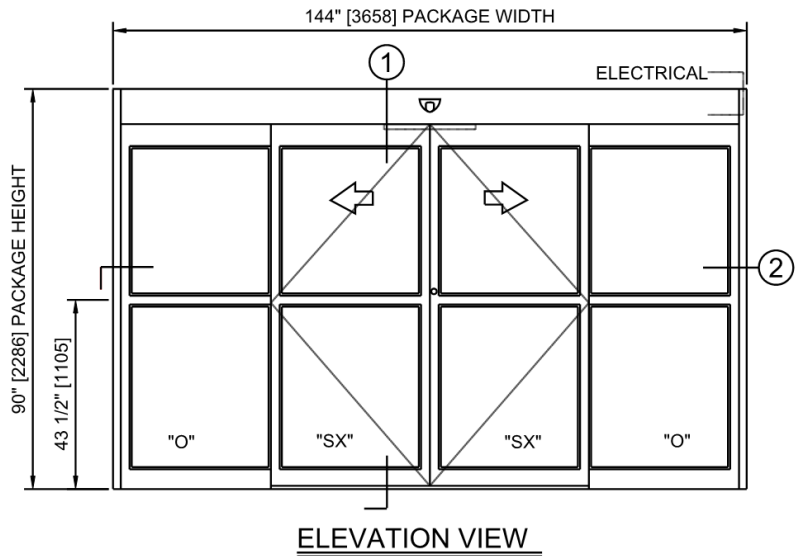
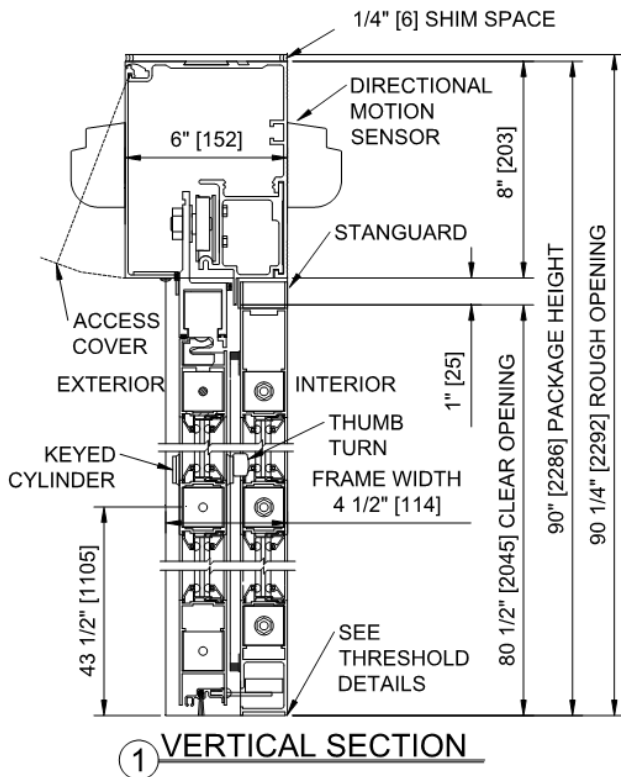
Door Package Color Dark Bronze Anodized

Locking / Access ControlCylinder Options Standard
Lock Configuration Cylinder/Thumbturn Required
Lock Config Options Two Point Lock**Options and Accessories**Jamb Substitution No Substitution
Threshold Option Double Bevel 6" (Continuous)
Switch Type Rotary Switch - 6 Position**Glass Specifications**SX Glass Thickness 0.2500"
O Glass Thickness 0.2500"**Inclusions/Exclusions****Inclusions**Door package installation.
Demolition of existing storefront.
120 volts AC to inside auto door header 5 amp min.
Glass & Glazing.
Break metal.
Caulking.**Exclusions**Recess prep & grout for track or threshold.
Painting, patching & flooring work.
After hours premium labor.
Delegated Design.
Structural Review (no seismic review).
Permits & inspections by others.
Prevailing Wage.
Certified Payroll.
Cleaning and protection of installed material.**Shop Drawing / Submittal Review****Date:** _____☐ No Exceptions Taken ☐ Furnish with Changes Noted ☐ Review and Resubmit ☐ Rejected

SUBMITTAL WAS REVIEWED FOR GENERAL CONFORMANCE TO THE CONTRACT DOCUMENTS. THE GENERAL CONTRACTOR IS RESPONSIBLE FOR CONFIRMING AND CORRELATING DIMENSIONS AT JOBSITE FOR TOLERANCE, CLEARANCE, QUANTITIES, FABRICATION, TECHNIQUES OF CONSTRUCTION, COORDINATION OF THIS WORK WITH THE WORK OF OTHER TRADES, AND FULL COMPLIANCE WITH THE CONTRACT DOCUMENTS.

By: _____

Company: _____

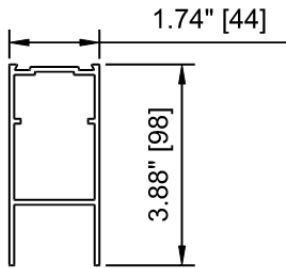


STANLEY.

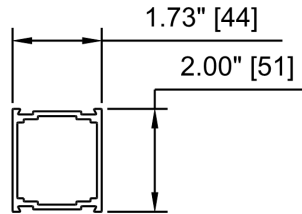
Job Name : VA Primary Care Myrtle Beach
Location :
Door Location : Interior

Job# : 142097
Product Qty : 1
Product : DURAGLIDE 2000 BP

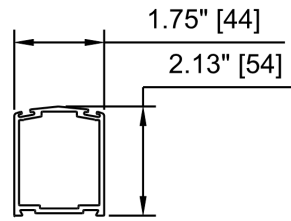
Date: Feb 16 2018



BOTTOM RAIL, 4"
6063-T6

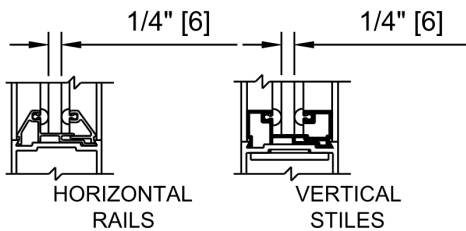


MUNTIN BAR, 2"
6063-T6

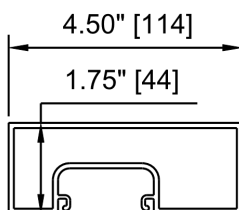


STILE, NARROW
6063-T6

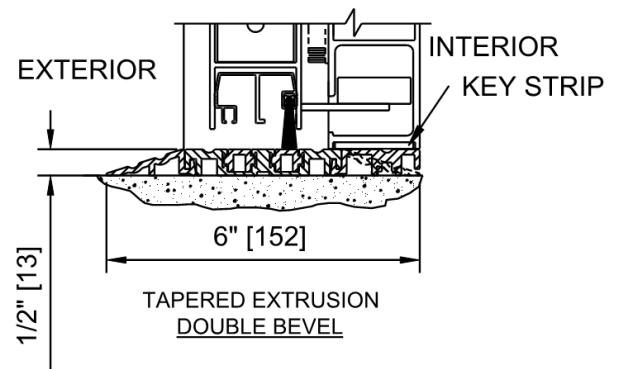
**TRANSOM VERTICAL section not
selected in the package**



**PANEL GLAZING
SECTIONS
1/4" GLASS**



JAMB, 4 1/2"
6063-T6



**THRESHOLD-TAPERED EXTRUSION
4 1/2" FRAME
(DOUBLE BEVEL THROUGHOUT DOOR OPENING)**

STANLEY.**Job Name :** VA Primary Care Myrtle Beach
Location :
Door Location : Interior**Job# :** 142097
Product Qty : 1
Product : DURAGLIDE 2000 BP**Date:** Feb 16 2018**Door Details**

Package Width	Masonry/Rough Opening Width	Clear Door Opening Width	Emergency Breakout	Package Height	Rough Opening Height
144.0000"	144.5000"	60.3020"	67.5520"	90.0000"	90.2500"

Options**Finish**

Door Package Color Dark Bronze Anodized

Locking / Access ControlCylinder Options Standard
Lock Configuration Cylinder/Thumbturn Required
Lock Config Options Two Point Lock**Options and Accessories**Jamb Substitution No Substitution
Threshold Option Double Bevel 6" (Continuous)
Switch Type Rotary Switch - 6 Position**Glass Specifications**SX Glass Thickness 0.2500"
O Glass Thickness 0.2500"**Inclusions/Exclusions****Inclusions**Door package installation.
Demolition of existing storefront.
120 volts AC to inside auto door header 5 amp min.
Glass & Glazing.
Break metal.
Caulking.**Exclusions**Recess prep & grout for track or threshold.
Painting, patching & flooring work.
After hours premium labor.
Delegated Design.
Structural Review (no seismic review).
Permits & inspections by others.
Prevailing Wage.
Certified Payroll.
Cleaning and protection of installed material.**Shop Drawing / Submittal Review****Date:** _____☐ No Exceptions Taken ☐ Furnish with Changes Noted ☐ Review and Resubmit ☐ Rejected

SUBMITTAL WAS REVIEWED FOR GENERAL CONFORMANCE TO THE CONTRACT DOCUMENTS. THE GENERAL CONTRACTOR IS RESPONSIBLE FOR CONFIRMING AND CORRELATING DIMENSIONS AT JOBSITE FOR TOLERANCE, CLEARANCE, QUANTITIES, FABRICATION, TECHNIQUES OF CONSTRUCTION, COORDINATION OF THIS WORK WITH THE WORK OF OTHER TRADES, AND FULL COMPLIANCE WITH THE CONTRACT DOCUMENTS.

By: _____

Company: _____