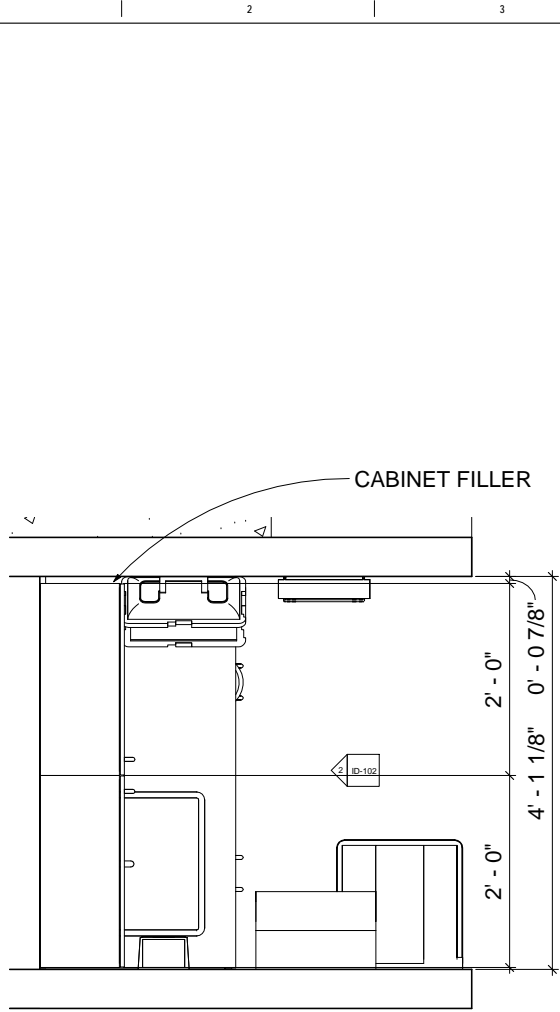
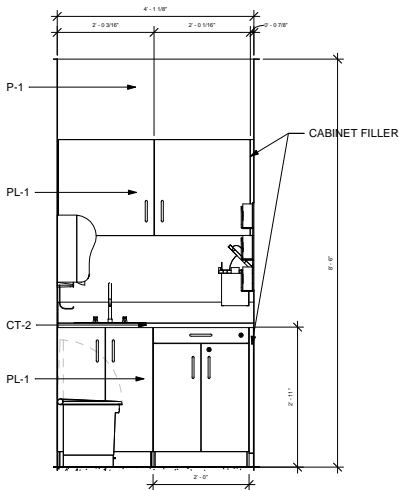


6/22/2017 11:16:02 PM  
Engineering/INTERIOR DESIGN/Designer: Fodor, Glenna/Name: Nursing - BLDG 200 CA 203 - Bathroom Remodel and Point of Care/BLDG 200 RM CA 203  
Revision:



1 NEW MEDICAL ALCOVE  
1 1/2" = 1'-0"



2 POINT CARE ALCOVE  
3/4" = 1'-0"



3 POINT OF CARE ALCOVE

### GENERAL NOTES

1. DEMOLISH EXISTING DRINKING FOUNTAIN.
2. INSTALL NEW WALL MOUNTED SINK WITH COVERS OVER PLUMBING FOR ACCESSIBILITY REQUIREMENTS.
3. INSTALL NEW CEILING HEIGHT WALL TO CREATE ALCOVE.
4. ALL ANCILLARY PRODUCT ACCESSORIES TO BE PROVIDED VA AND INSTALLED BY CONTRACTOR.
5. INSTALL NEW PLASTIC LAMINATE COUNTERTOP TO FILL AREA BETWEEN SINK AND WALL. APPROX 18" x 18".
6. INSTALL NEW LIGHT INSIDE ALCOVE AND LIGHT SWITCH WITH INTEGRATED OCCUPANCY SENSOR.
7. INSTALL EMERGENCY POWER QUAD OUTLET ABOVE COUNTER.
8. INSTALL NEW 4 PORT CAT6 DATA DROP ABOVE COUNTER TOP.

Revisions:	Date:

#### CONSULTANT

Consultant:

#### ARCHITECT/ENGINEER OF RECORD

A/E:

#### STAMP

Office of  
Construction  
and Facilities  
Management



Drawing Title

NEW ANCILLARY TEST STATION

Phase

Project Title

EMERGENCY DEPARTMENT SAFE ROOM

Project Number

# 662-17-0016

Building Number

BLDG 200

Drawing Number

ID-102

Location

SAN FRANCISCO VA MEDICAL CENTER

Issue Date

5/19/2017

Checked

GCM

Drawn

GCM