

1. PRIOR TO THE START OF ANY WORK, MARK LOCATION OF RAILS FOR APPROVAL BY THE CEMETERY DIRECTOR.

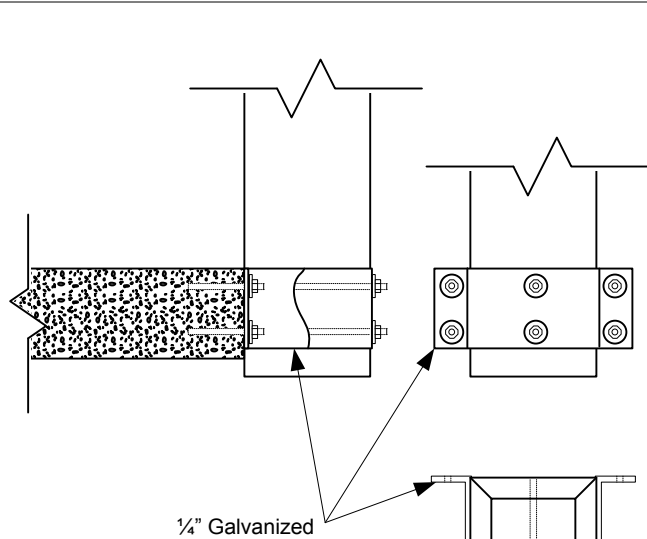
2. ALL EXISTING UNDERGROUND UTILITIES, FACILITIES SHALL BE PROTECTED FROM DAMAGE. CONTRACTOR IS TO NOTIFY CEMETERY DIRECTOR OF ANY CONFLICTS PRIOR TO STARTING OF WORK.

3. ALL EXCAVATED SOIL SHALL BE SPREAD OUT IN AN ON SITE LOCATION IDENTIFIED BY THE COTR.

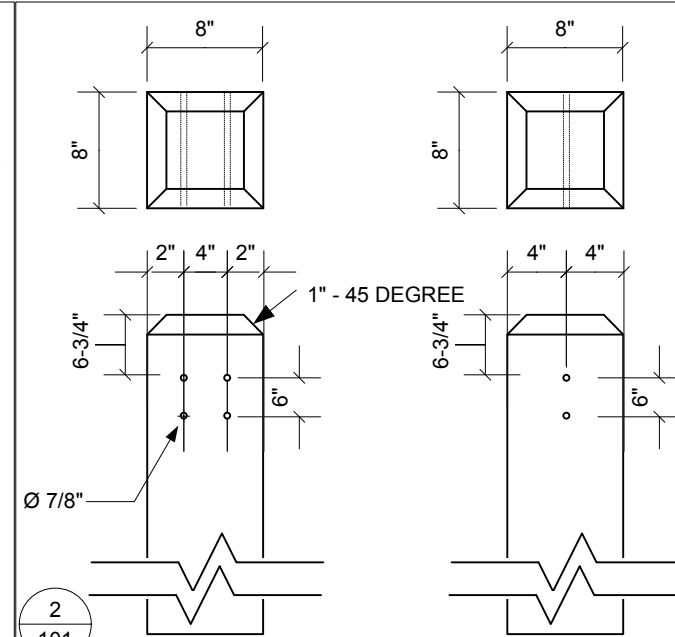
4. CONSTRUCTION OPERATIONS SHALL BE CONDUCTED IN SUCH A WAY AS TO PREVENT TRACKING OF MUD OR SOIL ONTO PUBLIC THOROUGHFARES. AT THE END OF EACH DAY THE CONTRACTOR SHALL CLEAN UP ALL MUD OR SOIL WHICH HAS BEEN TRACKED ONTO CEMETERY STREETS.

NOTES:

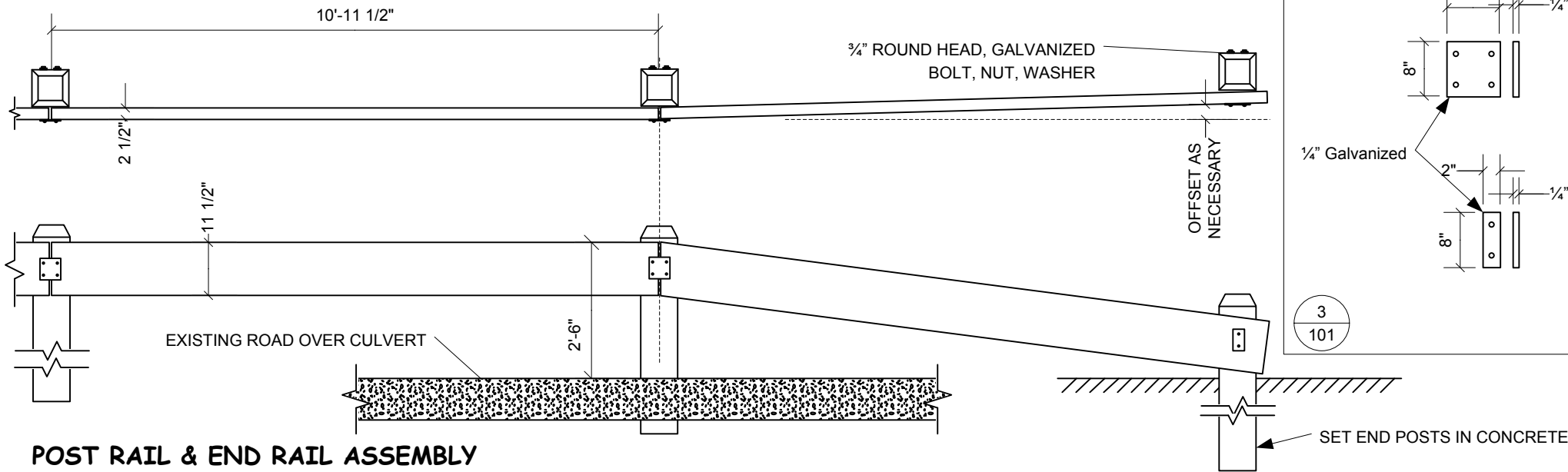
- INSTALL SIX (6) SEPARATE RAIL SEGMENTS FOR A TOTAL OF 284 LF OF GUARD RAIL.
- ALL TIMBER TO BE CREOSOTE PRESSURE TREATED.
- TREAT ALL CUT ENDS WITH COLOR MATCHING PRESERVATIVE.
- ALL METAL HARDWARE TO BE GALVANIZED.



1
101



2
101



3
101

NATIONAL CEMETERY ADMINISTRATION
Bakersfield National Cemetery

GUARD RAILS

Checked CVB	Approved by CJS	REVISIONS		
		No.	Date	Description
Drawn CJS	Date Feb 2, 2012			

Drawing Number
101
Page 1 of 1