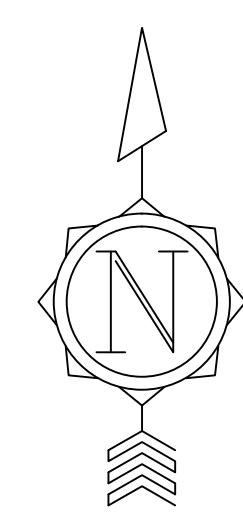
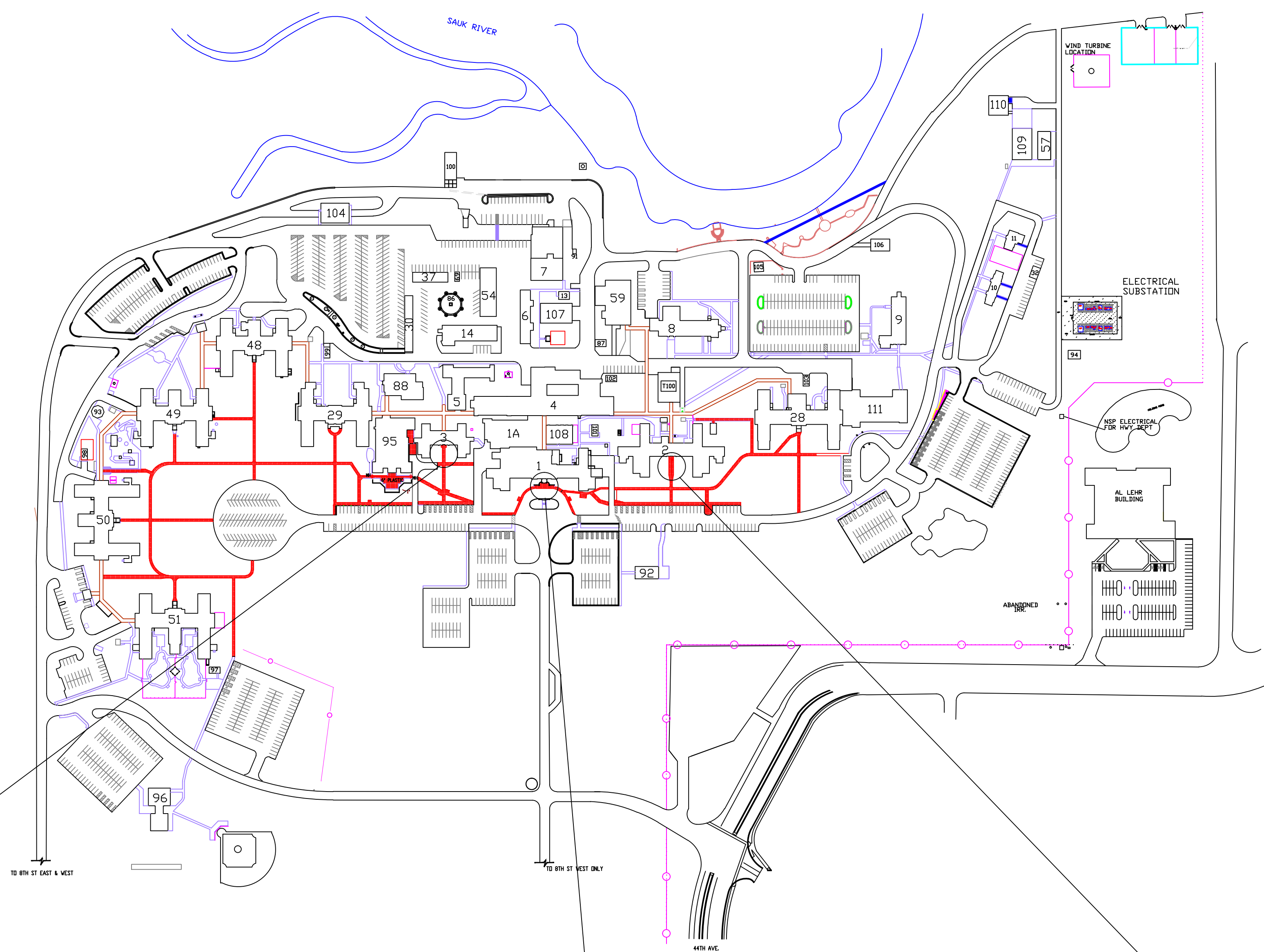


NOTE: ALL (3) OF THESE LOCATIONS WILL REQUIRE COORDINATION WITH COR AND BUILDING OCCUPANTS TO BEST SCHEDULE THE DOWN TIME AND ALTERNATE ACCESS ISSUES.

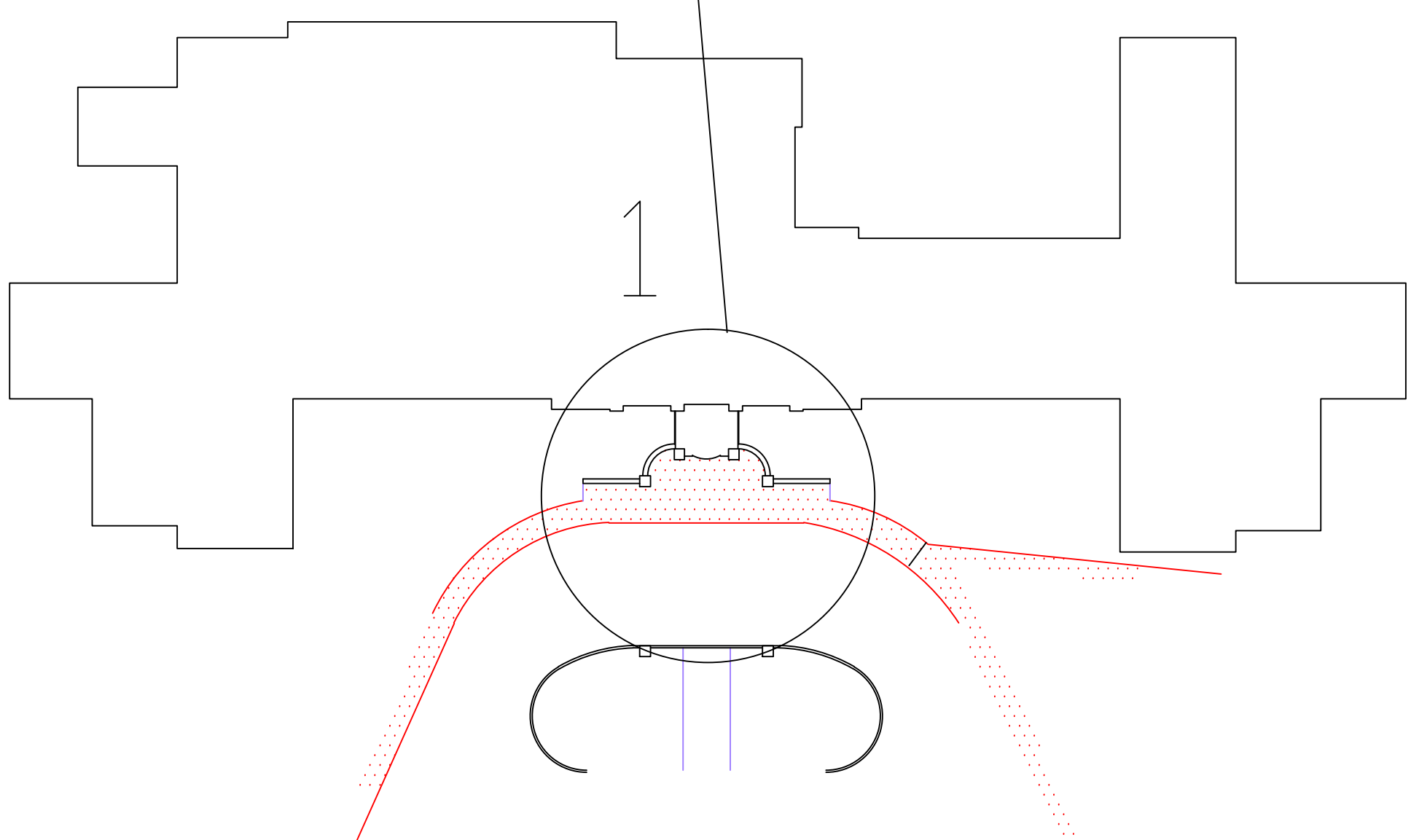
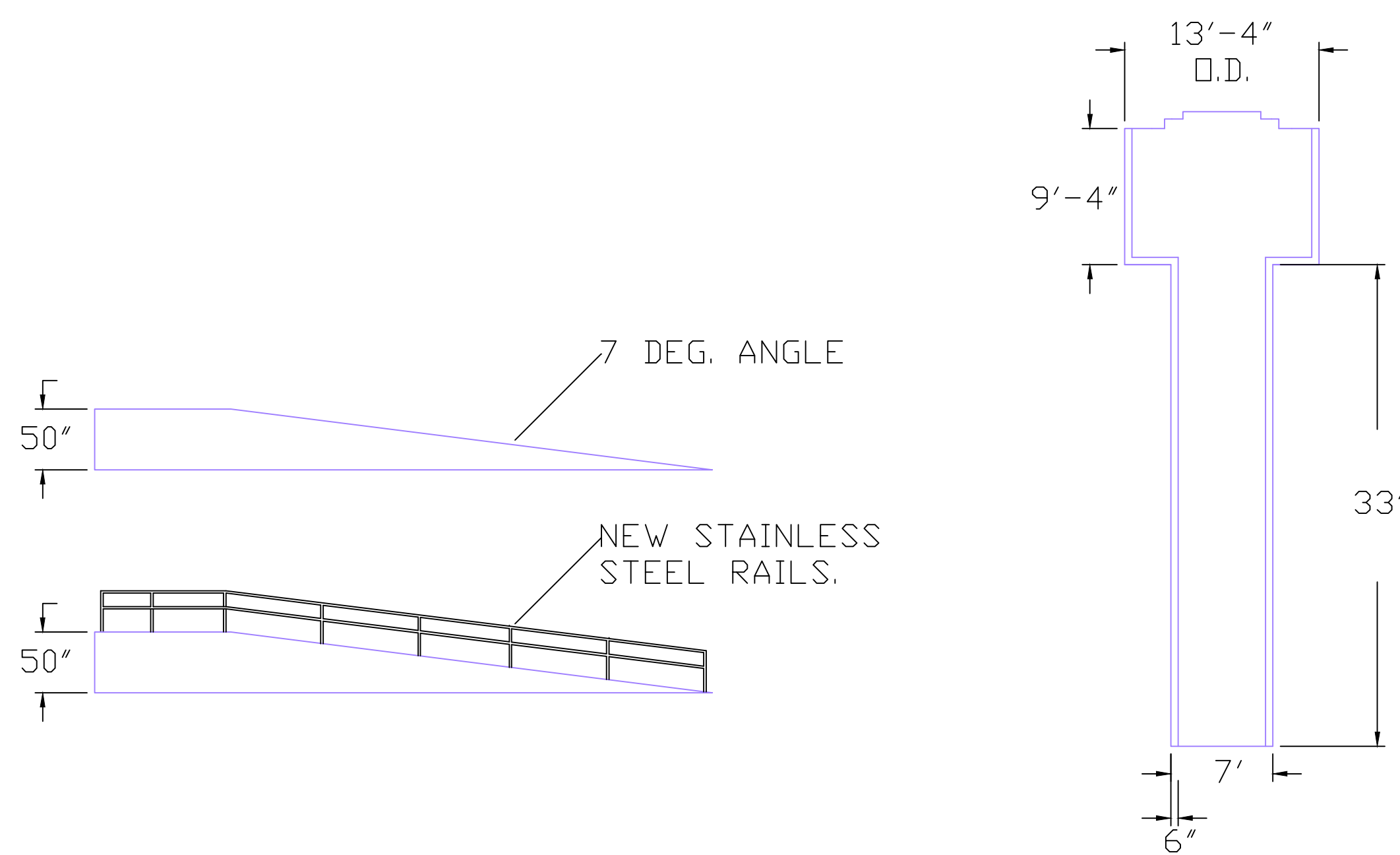
NOTE: B2 & B3 RAMPS REQUIRES DEMO OF EXISTING AUTOMATIC DOOR OPENER AND PLACEMENT OF NEW.



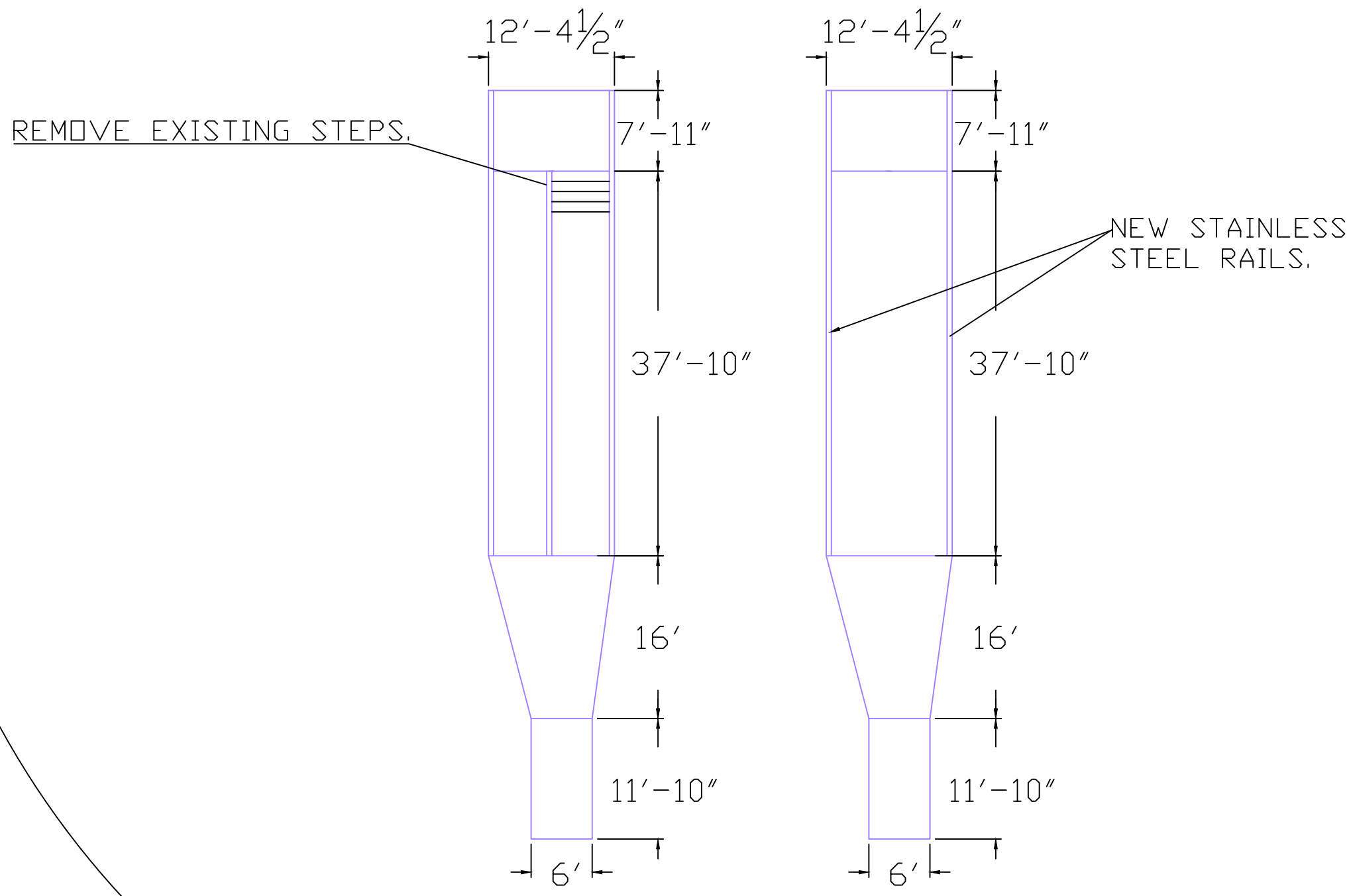
BUILDING 3 RAMP

BUILDING 1 ENTRANCE

BUILDING 2 RAMP



REFER TO B1 ICE MELT INFO ON SHEET 15



PHASING PLAN 6

No	REVISION	DATE

APPROVED SERVICE LINE DIRECTOR	DATE	APPROVED INFECTION CONTROL NURSE	DATE	DRAWING TITLE	PROJECT TITLE	DATE
APPROVED GENE COORDINATOR	DATE	APPROVED PATIENT SAFETY	DATE	Phase 6	Replace Deteriorated Sidewalks	
APPROVED PROJECTS SECTION MANAGER	DATE	APPROVED CHIEF OF POLICE	DATE	APPROVED CHIEF OF STAFF	BUILDING NO. SITE	CHECKED BY BRAWN RLC
APPROVED DIRECTOR FMO	DATE	APPROVED SAFETY MANAGER	DATE	APPROVED MEDICAL CENTER DIRECTOR	LOCATION	DWG FILE VA-SITE
					VIA MEDICAL CENTER ST. CLOUD, MN 56309	DWG NO. 1039
						DWG 11 OF 15

