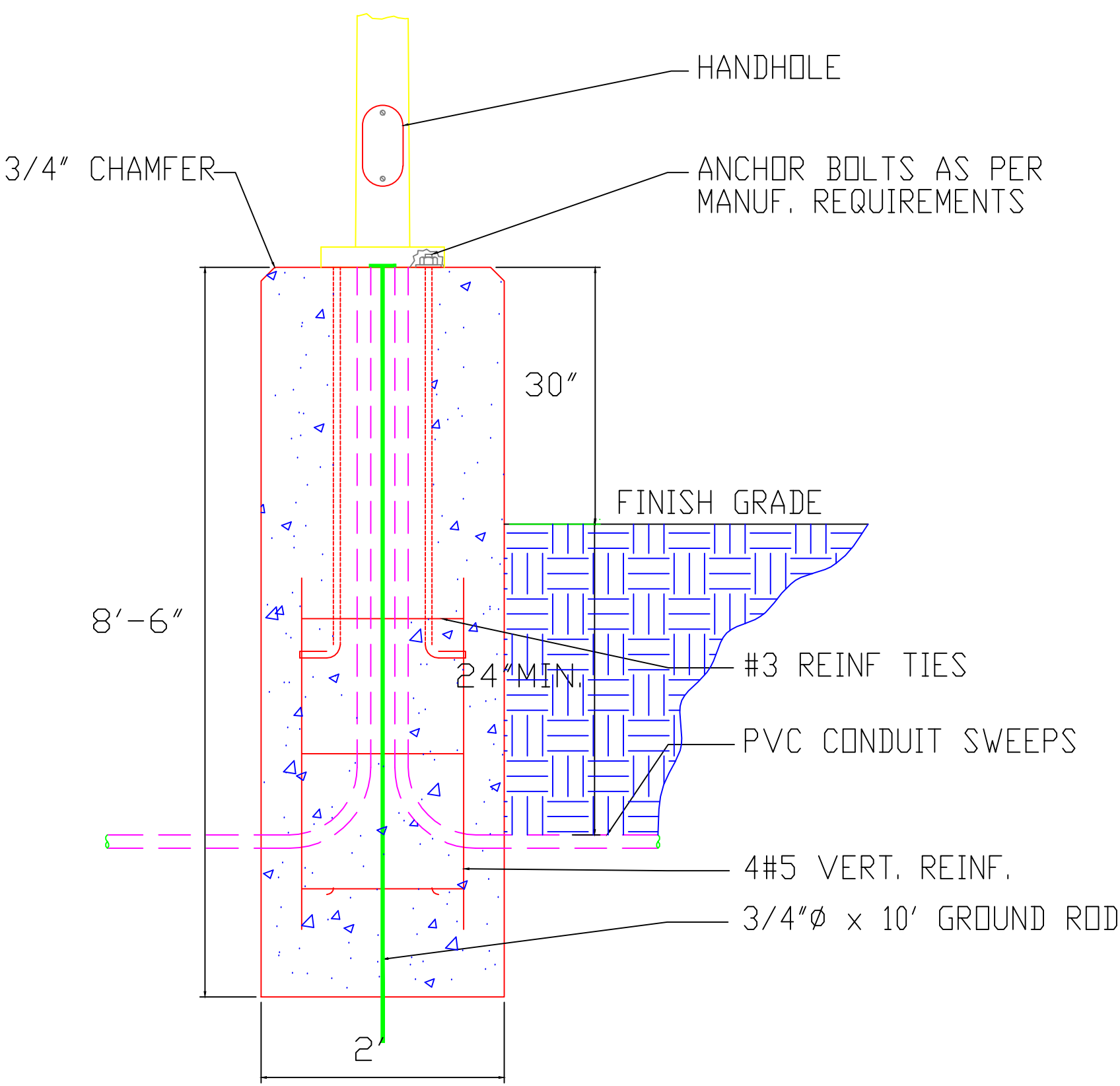


LIGHT POLE



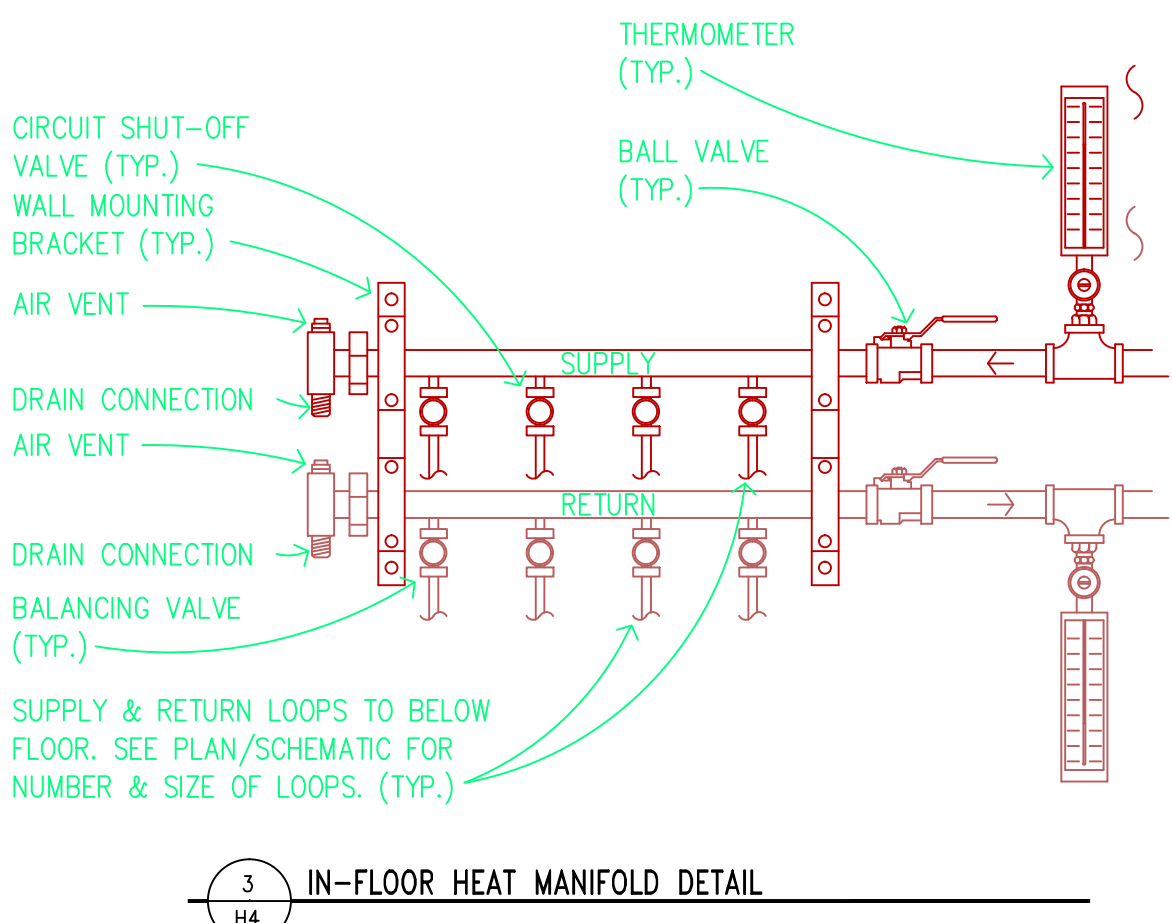
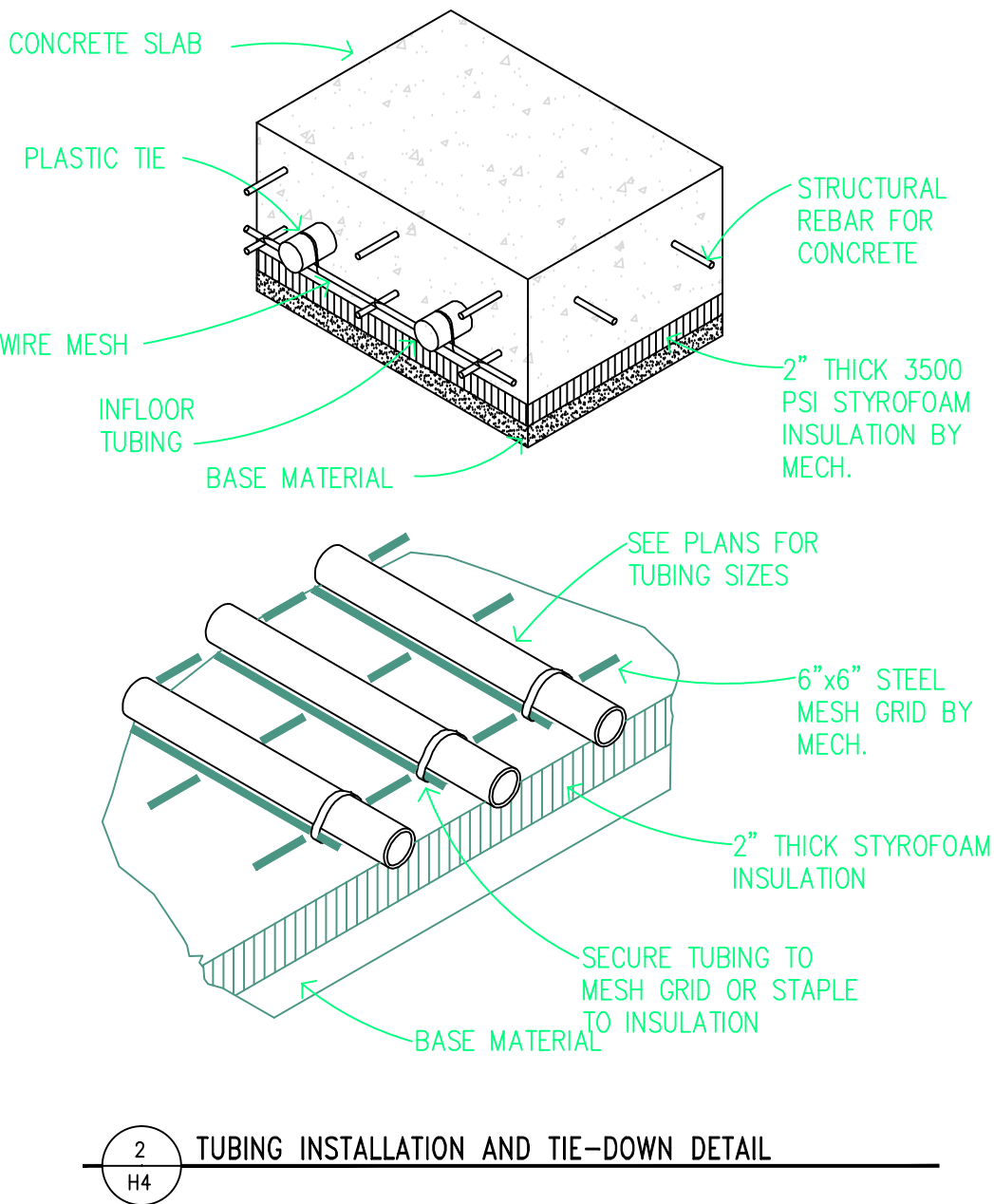
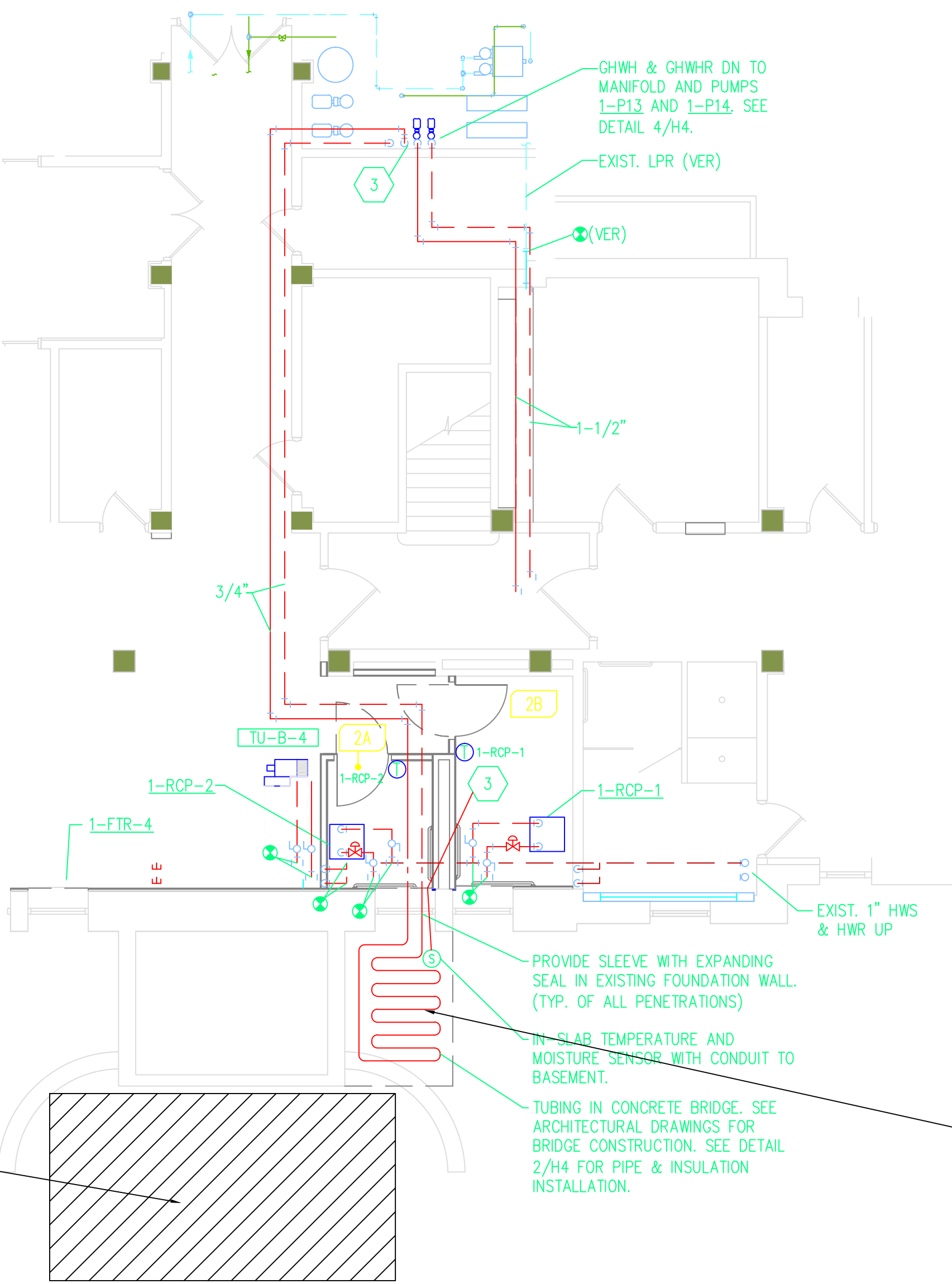
FOUNDATION NOTES:

1. 3000 P.S.I. CLASS A CONCRETE PLACED NEXT TO UNDISTURBED EARTH.
2. 4-3/4"x24" GALVANIZED ANCHOR BOLTS (3" PROJECTION) WITH LEVELING NUTS & WASHERS.
3. UNSTABLE SOILS, AND/OR POLE HEIGHTS CHANGE, SHALL REQUIRE SPECIAL ENGINEERING.
4. ALL FINISHED POLE FOUNDATIONS SHALL BE CHAMFERED.
5. TOP OF BASE SHALL BE LEVEL AND ELEVATION OF TOP OF BASE SHALL BE EQUAL TO TOP OF CURB.

CONCRETE BASE FOR PARKING LOT LIGHT STANDARDS

NO SCALE
*FOR LIGHT POLES IN OR ON THE EDGE OF PARKING LOTS, PAINT CONCRETE FOUNDATION YELLOW.

B1 ICE MELT SYSTEM



3 IN-FLOOR HEAT MANIFOLD DETAIL

NOTES:
1. INSULATE ALL PIPING ABOVE GRADE.

CONCRETE IN FRONT OF BUILDING 1 REVOLVING DOOR WILL REQUIRE REWORK OF ICE MELT TIE-IN.

CONCRETE SECTION IN FRONT OF SIDE ENTRANCE TO THE EAST OF THE REVOLVING DOOR WILL NOT BE REPLACED.

MISC. DETAILS