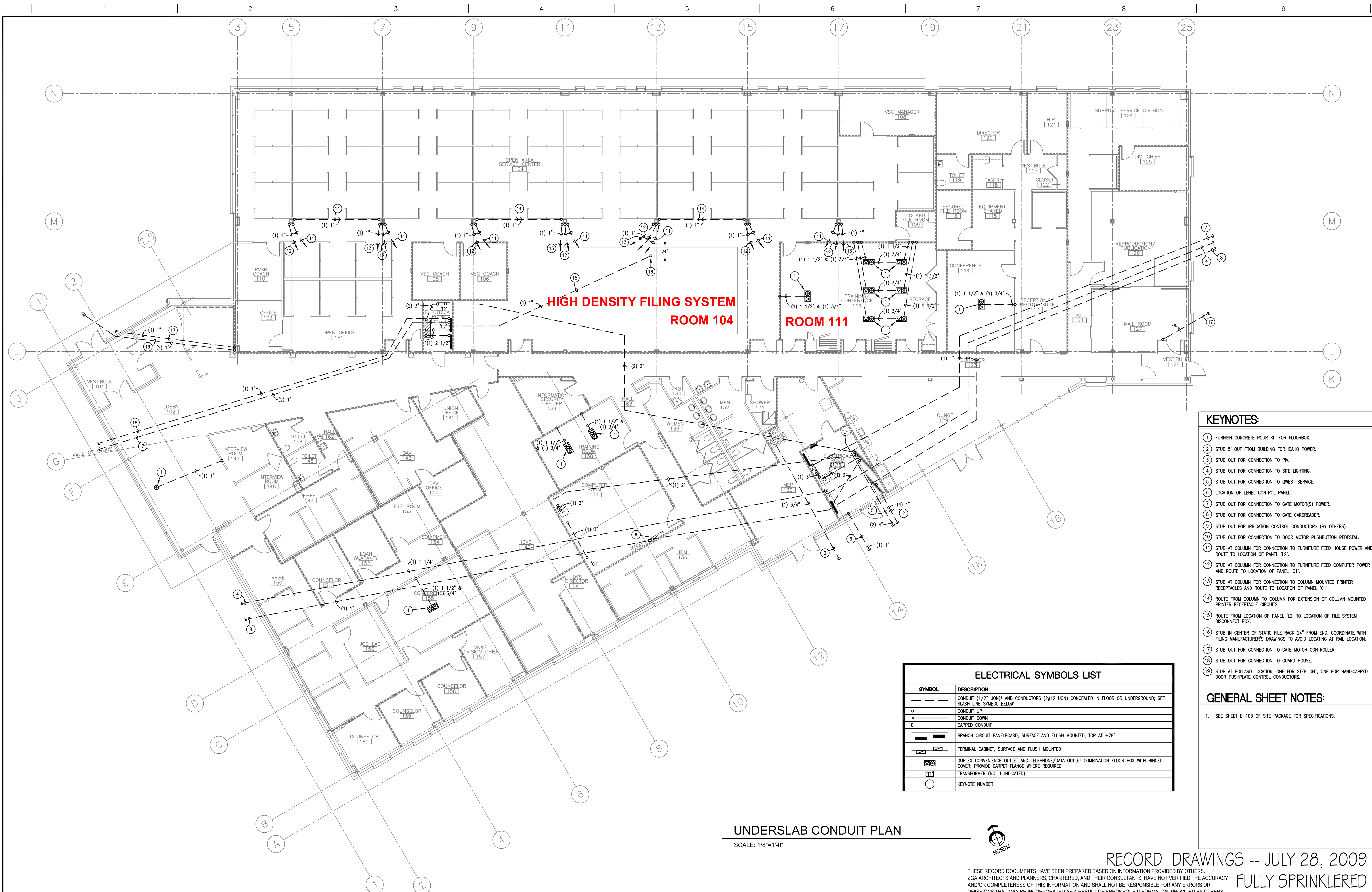


three inches = one foot
one and one half inches = one foot
one inch = one foot
three quarters inch = one foot
one half inch = one foot
three eighths inch = one foot
one quarter inch = one foot
one eighth inch = one foot
one eighth inch = one foot



- KEYNOTES:**
- 1 FURNISH CONCRETE POUR KIT FOR FLOORBOX.
 - 2 STUB 5' OUT FROM BUILDING FOR IDAHO POWER.
 - 3 STUB OUT FOR CONNECTION TO PIV.
 - 4 STUB OUT FOR CONNECTION TO SITE LIGHTING.
 - 5 STUB OUT FOR CONNECTION TO QWEST SERVICE.
 - 6 LOCATION OF LEVEL CONTROL PANEL.
 - 7 STUB OUT FOR CONNECTION TO GATE MOTOR(S) POWER.
 - 8 STUB OUT FOR CONNECTION TO GATE CARDREADER.
 - 9 STUB OUT FOR IRRIGATION CONTROL CONDUCTORS (BY OTHERS).
 - 10 STUB OUT FOR CONNECTION TO DOOR MOTOR PUSHBUTTON PEDESTAL.
 - 11 STUB AT COLUMN FOR CONNECTION TO FURNITURE FEED HOUSE POWER AND ROUTE TO LOCATION OF PANEL 'L2'.
 - 12 STUB AT COLUMN FOR CONNECTION TO FURNITURE FEED COMPUTER POWER AND ROUTE TO LOCATION OF PANEL 'C1'.
 - 13 STUB AT COLUMN FOR CONNECTION TO COLUMN MOUNTED PRINTER RECEPTACLES AND ROUTE TO LOCATION OF PANEL 'C1'.
 - 14 ROUTE FROM COLUMN TO COLUMN FOR EXTENSION OF COLUMN MOUNTED PRINTER RECEPTACLE CIRCUITS.
 - 15 ROUTE FROM LOCATION OF PANEL 'L2' TO LOCATION OF FILE SYSTEM DISCONNECT BOX.
 - 16 STUB IN CENTER OF STATIC FILE RACK 24" FROM END. COORDINATE WITH FILING MANUFACTURER'S DRAWINGS TO AVOID LOCATING AT RAIL LOCATION.
 - 17 STUB OUT FOR CONNECTION TO GATE MOTOR CONTROLLER.
 - 18 STUB OUT FOR CONNECTION TO GUARD HOUSE.
 - 19 STUB AT BOLLARD LOCATION: ONE FOR STEPLIGHT, ONE FOR HANDICAPPED DOOR PUSHPLATE CONTROL CONDUCTORS.

ELECTRICAL SYMBOLS LIST	
SYMBOL	DESCRIPTION
---	CONDUIT (1/2" UON)* AND CONDUCTORS (2#12 UON) CONCEALED IN FLOOR OR UNDERGROUND; SEE SLASH LINE SYMBOL BELOW
○	CONDUIT UP
●	CONDUIT DOWN
—	CAPPED CONDUIT
—	BRANCH CIRCUIT PANELBOARD, SURFACE AND FLUSH MOUNTED, TOP AT +78"
—	TERMINAL CABINET, SURFACE AND FLUSH MOUNTED
□	DUPLEX CONVENIENCE OUTLET AND TELEPHONE/DATA OUTLET COMBINATION FLOOR BOX WITH HINGED COVER; PROVIDE CARPET FLANGE WHERE REQUIRED
⊞	TRANSFORMER (NO. 1 INDICATED)
①	KEYNOTE NUMBER

UNDERSLAB CONDUIT PLAN
SCALE: 1/8"=1'-0"



RECORD DRAWINGS -- JULY 28, 2009
FULLY SPRINKLERED

THESE RECORD DOCUMENTS HAVE BEEN PREPARED BASED ON INFORMATION PROVIDED BY OTHERS. ZGA ARCHITECTS AND PLANNERS, CHARTERED, AND THEIR CONSULTANTS, HAVE NOT VERIFIED THE ACCURACY AND/OR COMPLETENESS OF THIS INFORMATION AND SHALL NOT BE RESPONSIBLE FOR ANY ERRORS OR OMISSIONS THAT MAY BE INCORPORATED AS A RESULT OF ERRONEOUS INFORMATION PROVIDED BY OTHERS.

CONSULTANTS: EIDAM AND ASSOCIATES CONSULTING ENGINEERS 720 E. PARK BOULEVARD, SUITE 250 BOISE, IDAHO 83712-7175 PHONE (208)345-7177; FAX (208)345-7178 EMAIL: cades@eidam-associates.com EIDAM & ASSOCIATES PROJECT NUMBER 08-034RD		RECORD DOCUMENTS THESE DOCUMENTS HAVE BEEN PREPARED BASED ON INFORMATION PROVIDED BY THE CONTRACTOR. EIDAM & ASSOCIATES HAVE NOT VERIFIED THE ACCURACY OF THIS INFORMATION AND SHALL NOT BE RESPONSIBLE FOR ANY ERRORS OR OMISSIONS WHICH MAY BE INCORPORATED HEREIN AS A RESULT. Date: JULY 2009 By: GLJ Eidam and Associates 720 E. Park Boulevard, Suite 250 Boise, Idaho 83712 208-345-7175 Copyright 2009 - Eidam and Associates		ARCHITECT: ZGA ARCHITECTS AND PLANNERS, CHARTERED 565 W. MYRTLE STREET, SUITE 225 BOISE, IDAHO 83702-7606 (208) 345-8872 CONTACT: LOWELL ALSETH, AIA		Drawing Title UNDERSLAB CONDUIT PLAN	Project Title Veterans Benefits Administration Boise Regional Office Building	Project Number 347 - VB3018 Building Number RO	Office of Facilities Management
Revisions		Date		SIGNED ON 1-22-2009 ORIGINAL WITH SIGNATURE ON FILE AT ZGA ARCHITECTS AND PLANNERS, CHARTERED		Approved Project Director	Location Boise, Idaho	Drawing Number E-104 Dwg. 5 of --	
							Date January 22, 2009	Checked GLJ/JMH	Drawn KGL