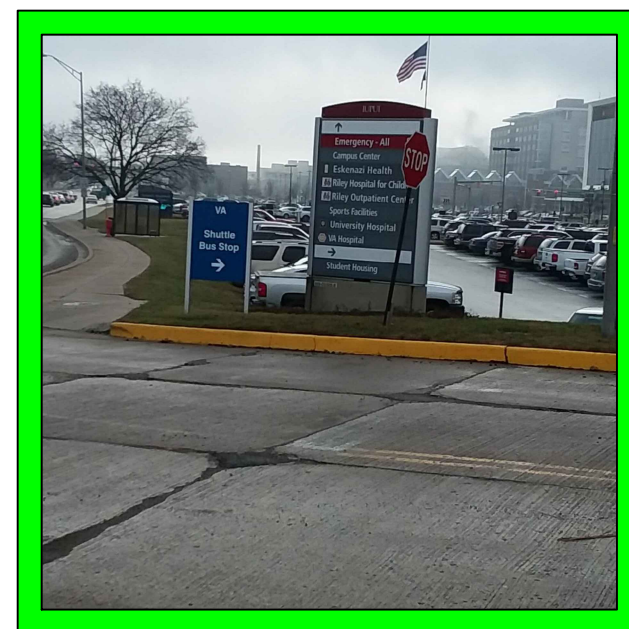
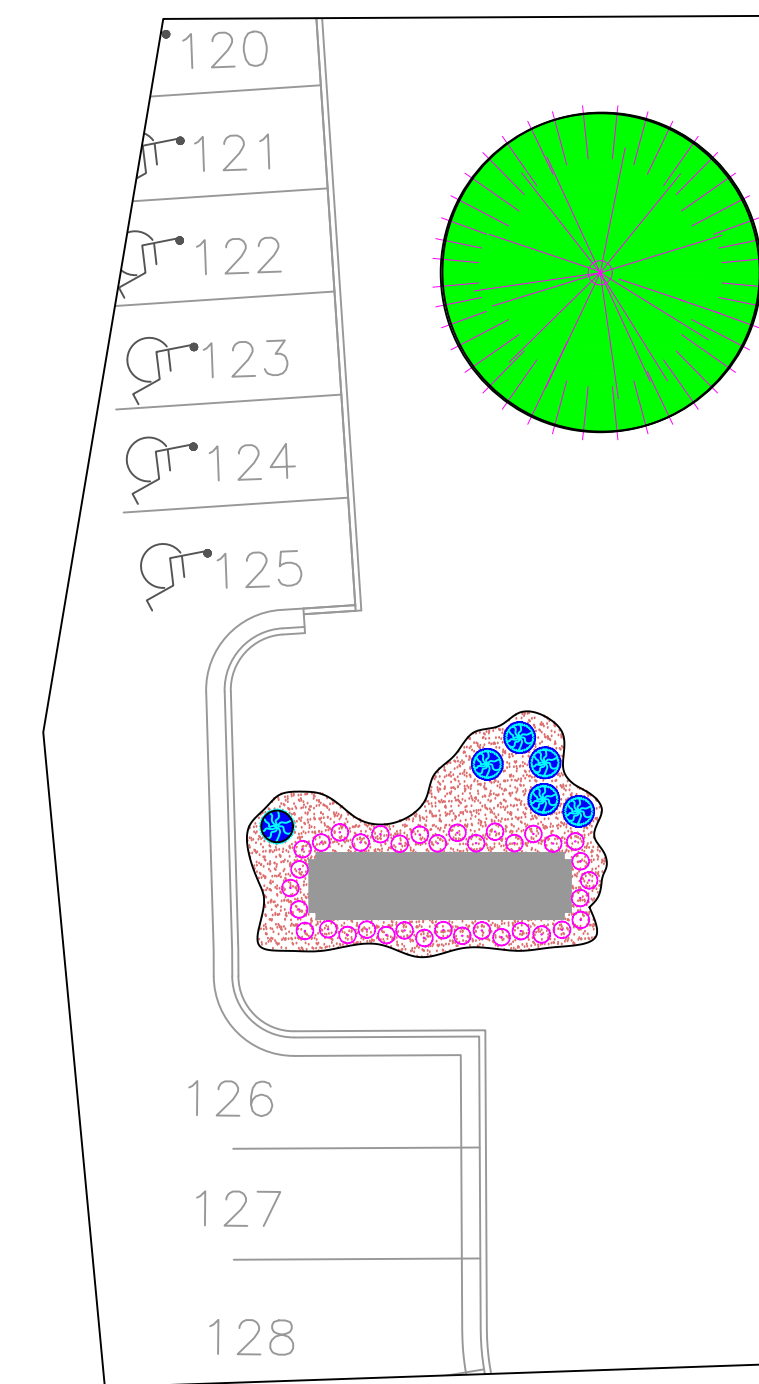


- 1 EXISTING MULCH AREA. PREPARE FOR NEW MULCH AND PLANTINGS PER SOW.
- 2 EXTEND MULCHED AREA TO INCLUDE 2nd SIGN. PREPARE FOR MULCH AND PLANTING PER SOW.
- 3 PLANT SOLID ROW OF WHITE FLOWERING ANNUALS AS SHOWN
- 4 MARQUEE SIGN



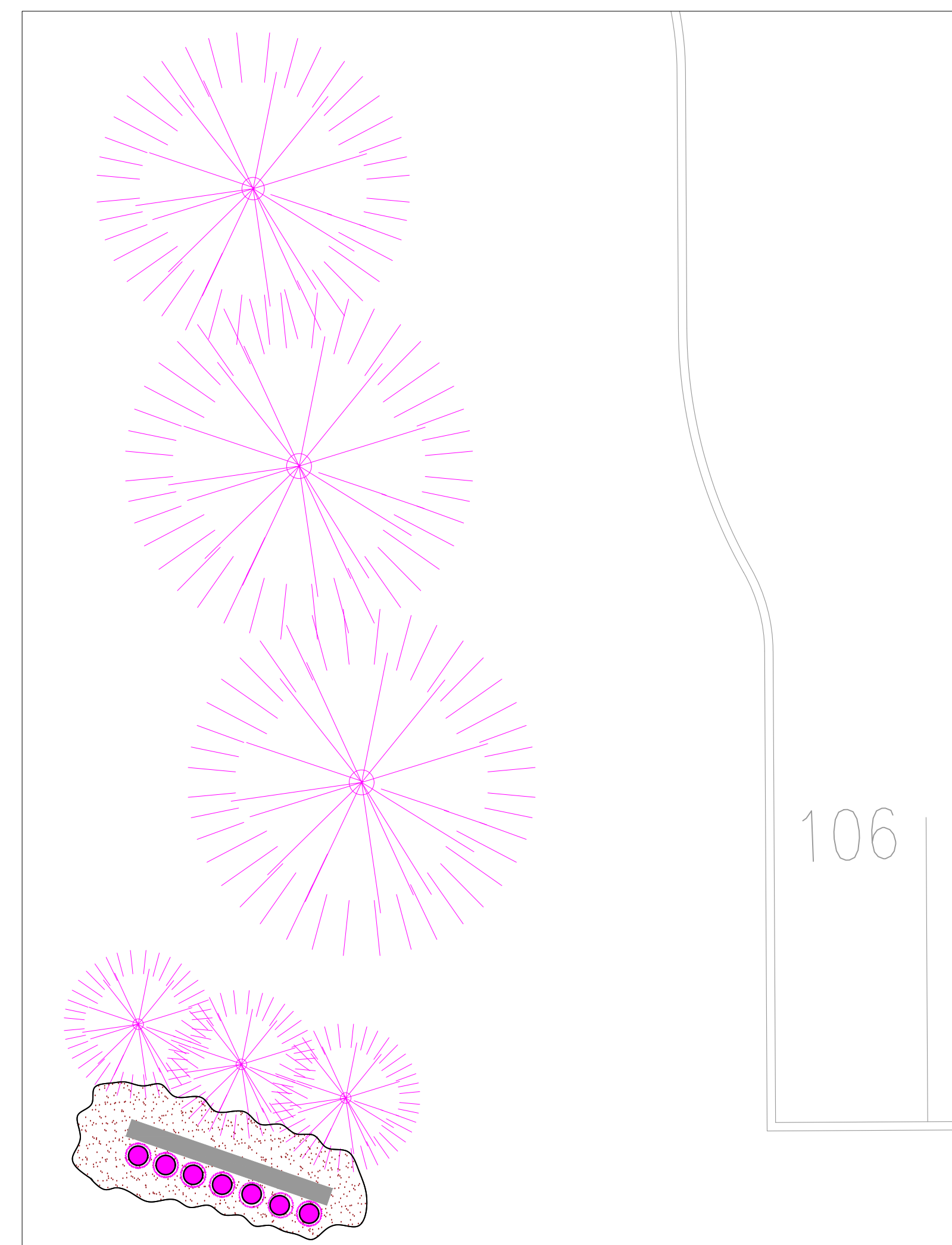
DETAIL #2



- 1 LANDSCAPING BED HAS EXISTING PERENNIALS PLANTED
- 2 EXISTING MULCH AREAS PREPARE FOR NEW MULCH AND PLANTINGS
- 3 PLANT SOLID ROW OF WHITE FLOWERING ANNUALS AS SHOWN
- 4 MARQUEE SIGN
- 5 LARGE TREE MULCH AROUND BASE



DETAIL #3



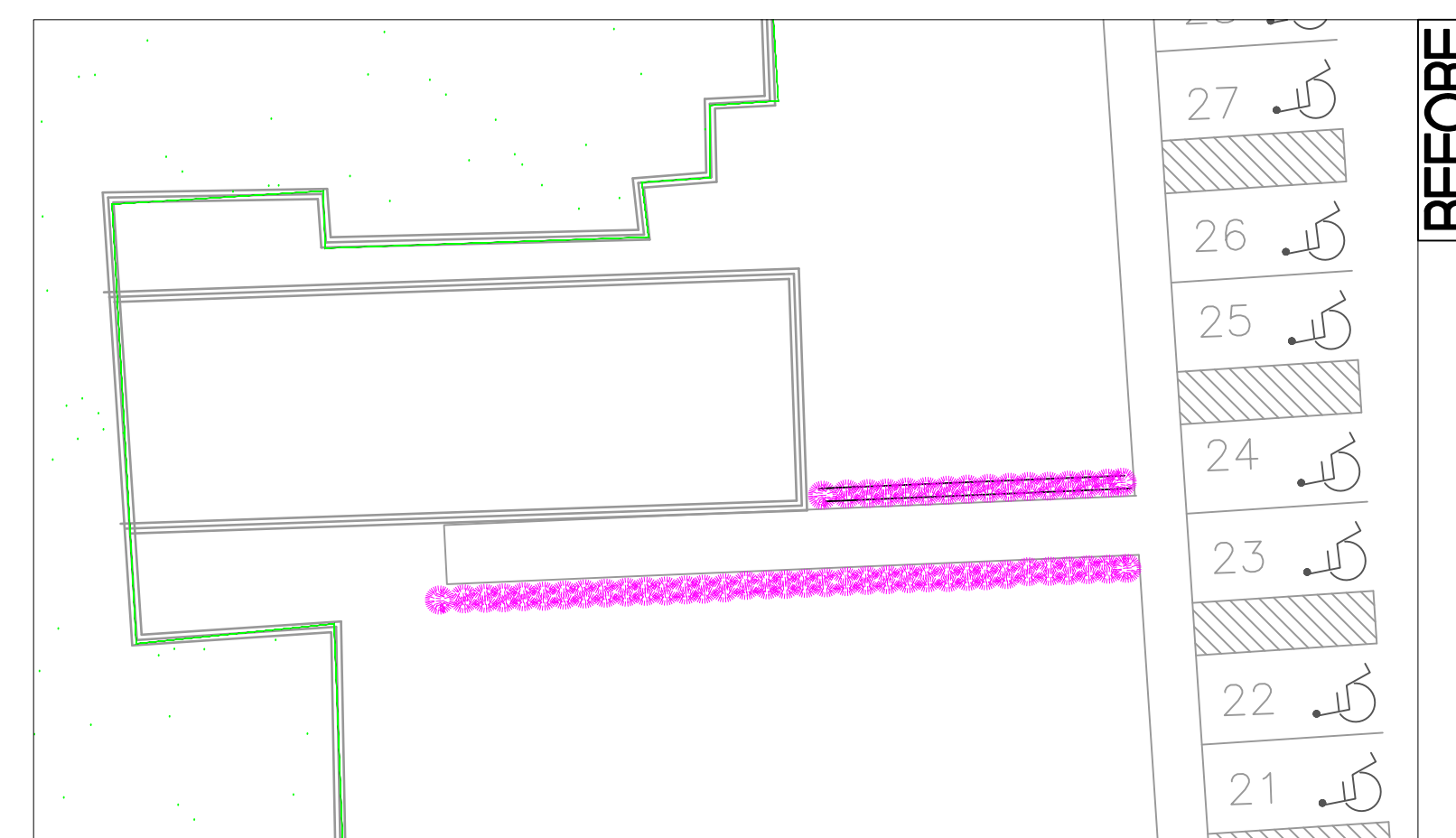
- 1 EXISTING MULCH AREA. PREPARE FOR NEW MULCH AND PLANTINGS PER SOW.
- 2 PLANT SOLID ROW OF WHITE FLOWERING ANNUALS AS SHOWN
- 3 MARQUEE SIGN



DETAIL #5



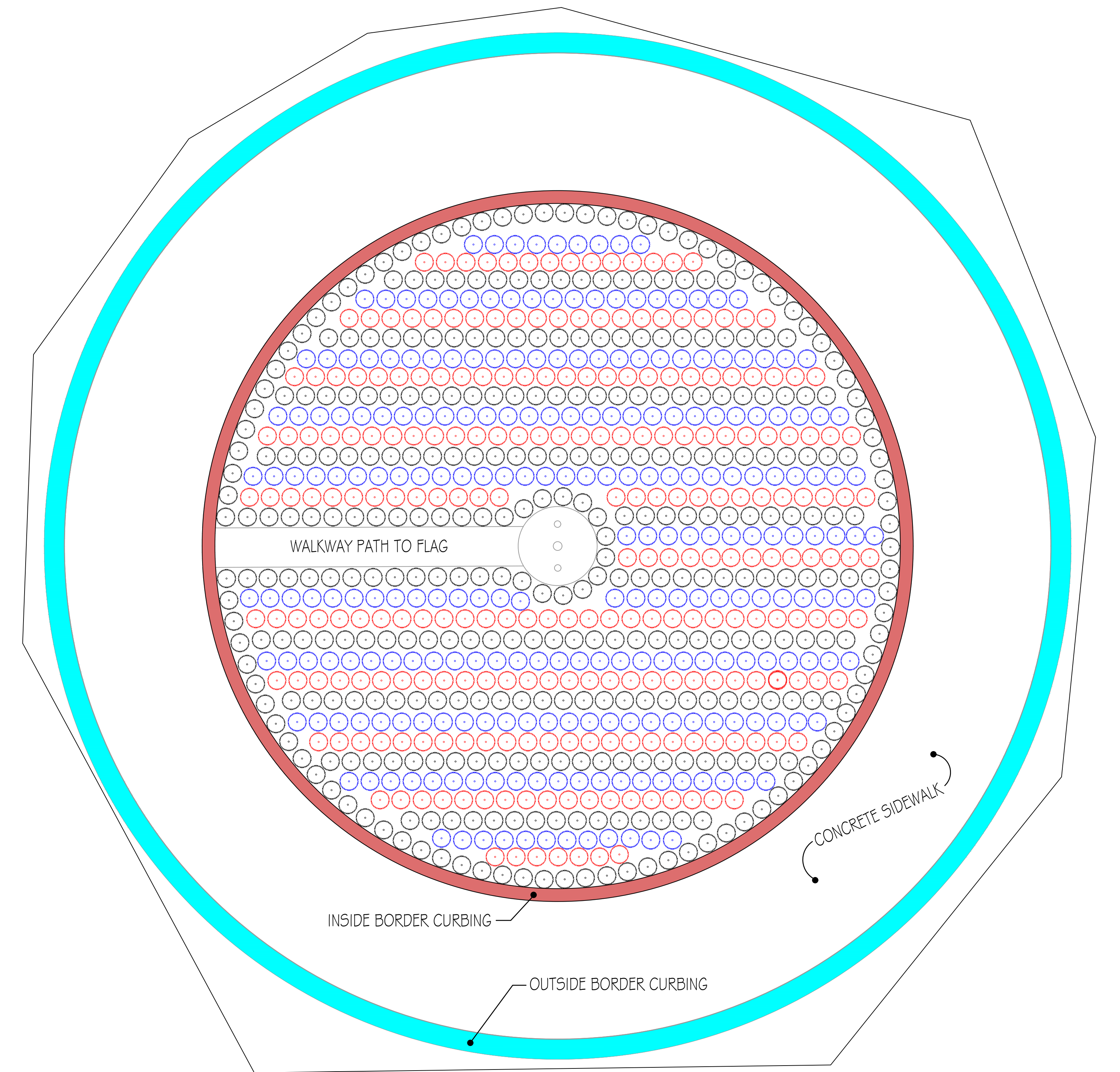
DETAIL #6



EXISTING OVERGROWN SHRUB BUSHES (REFER TO PHOTO) TO BE REMOVED.

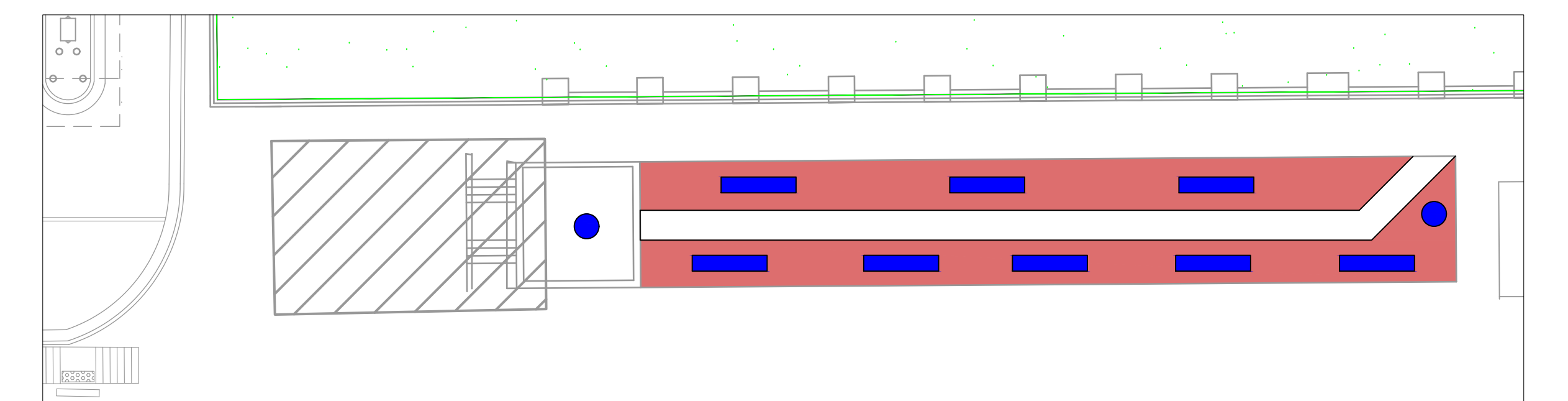
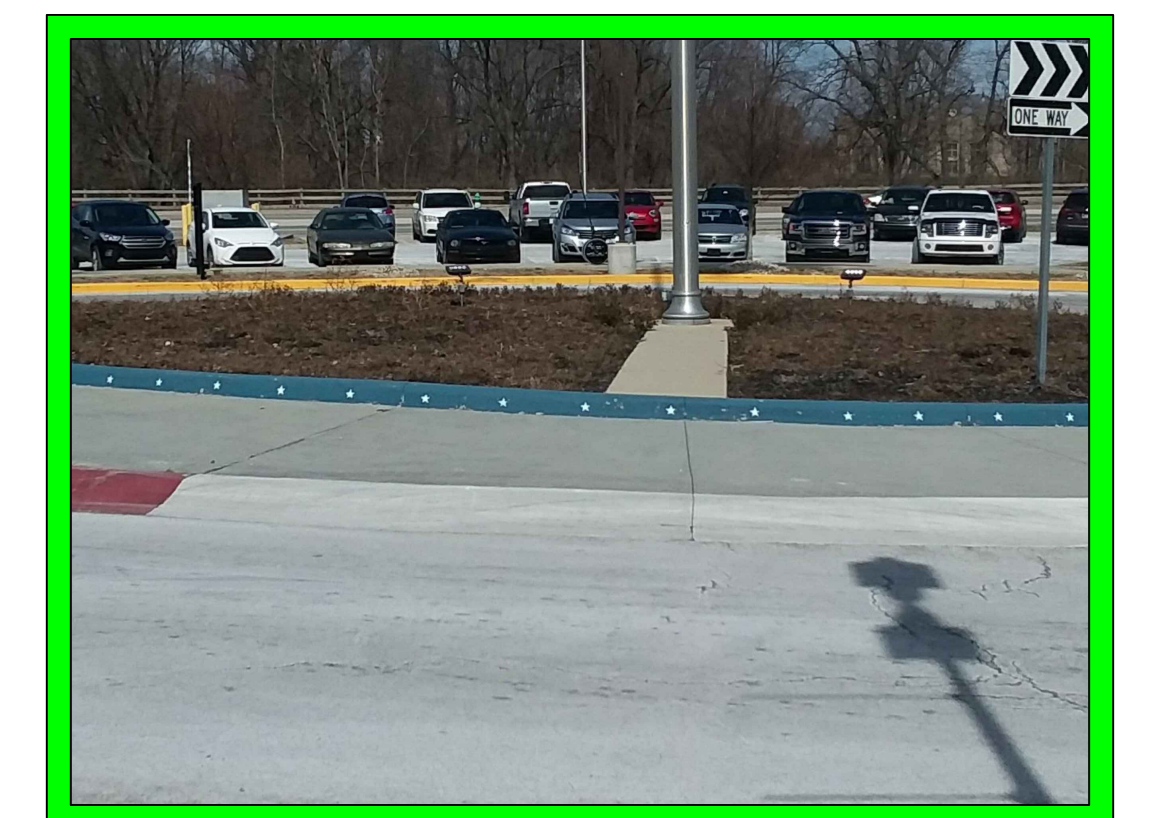


- PLANTED NEW WHITE HYDRANGIA'S
- NEWLY PLANTED DAY LILLYS
- ROWS OF TULIPS AND CROCUS BULBS (MIN. OF ONE PER LIN. FT.)



- 1 FILL ENTIRE CIRCLE WITH ROWS OF ANNUALS. SPACING 12-16" APART EACH ROW STAGGERED RED, WHITE & BLUE/PURPLE AS SHOWN.
- 2 SOLID ROW OF WHITE ANNUALS BORDERING ENTIRE CURB, SIDEWALK AND CENTER BASE SPACING TO BE 10-12" APART.

DETAIL #1



- 1 EXISTING CONC. FLOWER PLANTERS/POTS. THESE AREAS WILL REQUIRE ANNUALS

DETAIL #4

WTS SITE PLAN