





WATER COILS, COOLING															
COIL NUMBER	SYSTEM	CPI	WET VEL. FPM	WET SURF. °F		WET SURF. °F		WET SURF. °F		CIRCULATING FLUID				WET SURF. °F	
				WET SURF. °F	WET SURF. °F	WET SURF. °F	WET SURF. °F	WET SURF. °F	WET SURF. °F	WET SURF. °F	WET SURF. °F	WET SURF. °F	WET SURF. °F		
C01	201	20248	60	1.0	60.0	60.5	57.1	53.5	WATER	100	32	34	34	34	34
C02	201	20249	60	1.0	60.0	60.5	57.1	53.5	WATER	100	32	34	34	34	34
C03	201	20250	60	1.0	60.0	60.5	57.1	53.5	WATER	100	32	34	34	34	34
C04	201	20251	60	1.0	60.0	60.5	57.1	53.5	WATER	100	32	34	34	34	34
C05	201	20252	60	1.0	60.0	60.5	57.1	53.5	WATER	100	32	34	34	34	34
C06	201	20253	60	1.0	60.0	60.5	57.1	53.5	WATER	100	32	34	34	34	34
C07	201	20254	60	1.0	60.0	60.5	57.1	53.5	WATER	100	32	34	34	34	34
C08	201	20255	60	1.0	60.0	60.5	57.1	53.5	WATER	100	32	34	34	34	34
C09	201	20256	60	1.0	60.0	60.5	57.1	53.5	WATER	100	32	34	34	34	34
C10	201	20257	60	1.0	60.0	60.5	57.1	53.5	WATER	100	32	34	34	34	34
C11	201	20258	60	1.0	60.0	60.5	57.1	53.5	WATER	100	32	34	34	34	34
C12	201	20259	60	1.0	60.0	60.5	57.1	53.5	WATER	100	32	34	34	34	34
C13	201	20260	60	1.0	60.0	60.5	57.1	53.5	WATER	100	32	34	34	34	34
C14	201	20261	60	1.0	60.0	60.5	57.1	53.5	WATER	100	32	34	34	34	34
C15	201	20262	60	1.0	60.0	60.5	57.1	53.5	WATER	100	32	34	34	34	34
C16	201	20263	60	1.0	60.0	60.5	57.1	53.5	WATER	100	32	34	34	34	34
C17	201	20264	60	1.0	60.0	60.5	57.1	53.5	WATER	100	32	34	34	34	34
C18	201	20265	60	1.0	60.0	60.5	57.1	53.5	WATER	100	32	34	34	34	34
C19	201	20266	60	1.0	60.0	60.5	57.1	53.5	WATER	100	32	34	34	34	34
C20	201	20267	60	1.0	60.0	60.5	57.1	53.5	WATER	100	32	34	34	34	34
C21	201	20268	60	1.0	60.0	60.5	57.1	53.5	WATER	100	32	34	34	34	34
C22	201	20269	60	1.0	60.0	60.5	57.1	53.5	WATER	100	32	34	34	34	34
C23	201	20270	60	1.0	60.0	60.5	57.1	53.5	WATER	100	32	34	34	34	34
C24	201	20271	60	1.0	60.0	60.5	57.1	53.5	WATER	100	32	34	34	34	34
C25	201	20272	60	1.0	60.0	60.5	57.1	53.5	WATER	100	32	34	34	34	34
C26	201	20273	60	1.0	60.0										

WATER COILS, COOLING														
COIL NUMBER	SYSTEM	CPI	WET VEL. FPM	WET SURF. °F		WET SURF. °F		WET SURF. °F		CIRCULATING FLUID				WET SURF. °F
				WET SURF. °F	WET SURF. °F	WET SURF. °F	WET SURF. °F	WET SURF. °F	WET SURF. °F	WET SURF. °F	WET SURF. °F	WET SURF. °F	WET SURF. °F	
C01	201	20248	60	1.0	60.0	60.5	57.1	53.5	50.0	100	30	34	34	34
C02	201	20249	600	1.0	60.0	60.5	57.1	53.5	50.0	100	40	34	34	34
C03	201	20250	600	1.0	60.0	60.5	57.1	53.5	50.0	100	40	34	34	34
C04	201	20251	600	1.0	60.0	60.5	57.1	53.5	50.0	100	40	34	34	34
C05	201	20252	600	1.0	60.0	60.5	57.1	53.5	50.0	100	40	34	34	34
C06	201	20253	600	1.0	60.0	60.5	57.1	53.5	50.0	100	40	34	34	34
C07	201	20254	600	1.0	60.0	60.5	57.1	53.5	50.0	100	40	34	34	34
C08	201	20255	600	1.0	60.0	60.5	57.1	53.5	50.0	100	40	34	34	34
C09	201	20256	600	1.0	60.0	60.5	57.1	53.5	50.0	100	40	34	34	34
C10	201	20257	600	1.0	60.0	60.5	57.1	53.5	50.0	100	40	34	34	34
C11	201	20258	600	1.0	60.0	60.5	57.1	53.5	50.0	100	40	34	34	34
C12	201	20259	600	1.0	60.0	60.5	57.1	53.5	50.0	100	40	34	34	34
C13	201	20260	600	1.0	60.0	60.5	57.1	53.5	50.0	100	40	34	34	34
C14	201	20261	600	1.0	60.0	60.5	57.1	53.5	50.0	100	40	34	34	34
C15	201	20262	600	1.0	60.0	60.5	57.1	53.5	50.0	100	40	34	34	34
C16	201	20263	600	1.0	60.0	60.5	57.1	53.5	50.0	100	40	34	34	34
C17	201	20264	600	1.0	60.0	60.5	57.1	53.5	50.0	100	40	34	34	34
C18	201	20265	600	1.0	60.0	60.5	57.1	53.5	50.0	100	40	34	34	34
C19	201	20266	600	1.0	60.0	60.5	57.1	53.5	50.0	100	40	34	34	34
C20	201	20267	600	1.0	60.0	60.5	57.1	53.5	50.0	100	40	34	34	34
C21	201	20268	600	1.0	60.0	60.5	57.1	53.5	50.0	100	40	34	34	34
C22	201	20269	600	1.0	60.0	60.5	57.1	53.5	50.0	100	40	34	34	34
C23	201	20270	600	1.0	60.0	60.5	57.1	53.5	50.0	100	40	34	34	34
C24	201	20271	600	1.0	60.0	60.5	57.1	53.5	50.0	100	40	34	34	34
C25	201	20272	600	1.0	60.0	60.5	57.1	53.5	50.0	100	40	34	34	34

WATER COILS, HEATING												
COIL NUMBER	STEEL	CPI	WATER FLOW GPM	WATER LOAD BTU	TEMP. Δ T		CHILLING FLUID					WATER LOAD BTU
					W	CW	FLUID	CPI	TEMP. Δ T	WATER FLOW GPM	WATER LOAD BTU	
PH1	20T	15450	80	10	45	20	WATER	80	100	5.0	200000	
PH2	20T	15900	80	10	45	20	WATER	80	100	5.0	200000	
PH3	20T	16350	80	10	45	20	WATER	80	100	5.0	200000	
PH4	20T	16800	80	10	45	20	WATER	80	100	5.0	200000	
PH5	20T	17250	80	10	45	20	WATER	80	100	5.0	200000	
PH6	20T	17700	80	10	45	20	WATER	80	100	5.0	200000	
PH7	20T	18150	80	10	45	20	WATER	80	100	5.0	200000	
PH8	20T	18600	80	10	45	20	WATER	80	100	5.0	200000	
PH9	20T	19050	80	10	45	20	WATER	80	100	5.0	200000	
PH10	20T	19500	80	10	45	20	WATER	80	100	5.0	200000	

WATER COILS, HEATING												
COIL NUMBER	STEEL	CPI	WATER FLOW GPM	WATER LOAD BTU	TEMP Δ T		CHILLING FLUID					WATER LOAD BTU
					W	CW	FLUID	CPI	TEMP Δ T	WATER FLOW GPM	WATER LOAD BTU	
PH1	20T	15450	60	10	45	20	WATER	75	100	100	5.0	200000
PH2	20T	15900	60	10	45	20	WATER	75	100	100	5.0	200000
PH3	20T	16350	60	10	45	20	WATER	75	100	100	5.0	200000
PH4	20T	16800	60	10	45	20	WATER	75	100	100	5.0	200000
PH5	20T	17250	60	10	45	20	WATER	75	100	100	5.0	200000
PH6	20T	17700	60	10	45	20	WATER	75	100	100	5.0	200000
PH7	20T	18150	60	10	45	20	WATER	75	100	100	5.0	200000
PH8	20T	18600	60	10	45	20	WATER	75	100	100	5.0	200000
PH9	20T	19050	60	10	45	20	WATER	75	100	100	5.0	200000
PH10	20T	19500	60	10	45	20	WATER	75	100	100	5.0	200000

AIR FILTERS											
FILTER NUMBER	CPU	SYSTEM	16 CHANNEL	INPUT 1/2	160 or 250 DRIP		RELATIVE HUMIDITY	OVERHEAD		REMARKS	
					TEMP.	PAIR.		HEATED	FREE		
AF1	10248	001	0	30	25	70	00K SERVICE				
AF11	10248	001	0	00	40	1,00	00K SERVICE				
AF2	20709	002	0	30	20	70	00K SERVICE				
AF21	20709	002	0	00	40	1,00	00K SERVICE				
AF3	20845	003	0	20	25	70	00K SERVICE				
AF31	20845	003	0	00	40	1,00	00K SERVICE				
AF4	21335	004	0	30	30	70	00K SERVICE				
AF41	21335	004	0	00	40	1,00	00K SERVICE				
AF5	20023	005	0	30	30	70	00K SERVICE			2nd	
AF51	20023	005	0	00	40	1,00	00K SERVICE			2nd	
AF6	20023	006	0	30	20	70	00K SERVICE			4	
AF61	20023	006	0	00	40	1,00	00K SERVICE			4	
AF7	20023	007	0	30	20	70	00K SERVICE			1	
AF71	20023	007	0	00	40	1,00	00K SERVICE			1	
AF8	1160	015	0	20	20	70	00K SERVICE			2	
AF81	1160	015	0	00	20	70	00K SERVICE			2	
AF9	1160	016	0	20	20	70	00K SERVICE			2	
AF91	1160	016	0	00	20	70	00K SERVICE			2	
AF10	1160	017	0	20	10	20	00K SERVICE			1	
AF101	1160	017	0	00	10	20	00K SERVICE			1	
AF11	1160	018	0	20	10	20	00K SERVICE			2	
AF111	1160	018	0	00	10	20	00K SERVICE			2	
AF12	1160	019	0	20	10	20	00K SERVICE			2	
AF121	1160	019	0	00	10	20	00K SERVICE			2	
AF13	1160	020	0	20	10	20	00K SERVICE			2	
AF131	1160	020	0	00	10	20	00K SERVICE			2	
AF14	1160	021	0	20	10	20	00K SERVICE			2	
AF141	1160	021	0	00	10	20	00K SERVICE			2	
AF15	1160	022	0	20	10	20	00K SERVICE			2	
AF151	1160	022	0	00	10	20	00K SERVICE			2	
AF16	1160	023	0	20	10	20	00K SERVICE			2	
AF161	1160	023	0	00	10	20	00K SERVICE			2	
AF17	1160	024	0	20	10	20	00K SERVICE			2	
AF171	1160	024	0	00	10	20	00K SERVICE			2	
AF18	1160	025	0	20	10	20	00K SERVICE			2	
AF181	1160	025	0	00	10	20	00K SERVICE			2	
AF19	1160	026	0	20	10	20	00K SERVICE			2	
AF191	1160	026	0	00	10	20	00K SERVICE			2	
AF20	1160	027	0	20	10	20	00K SERVICE			2	
AF201	1160	027	0	00	10	20	00K SERVICE			2	
AF21	1160	028	0	20	10	20	00K SERVICE			2	
AF211	1160	028	0	00	10	20	00K SERVICE				

AIR FILTERS											
FILTER NUMBER	CPU	SYSTEM	16 CHANNEL	INPUT 1/2	160 or 250 DRIP		RELATIVE HUMIDITY	OVERHEAD		REMARKS	
					TEMP.	PAIR.		HEATED	FREE		
AF1	10248	001	0	30	25	70	00K SERVICE				
AF11	10248	001	0	00	40	1,00	00K SERVICE				
AF2	20709	002	0	30	20	70	00K SERVICE				
AF21	20709	002	0	00	40	1,00	00K SERVICE				
AF3	20845	003	0	20	25	70	00K SERVICE				
AF31	20845	003	0	00	40	1,00	00K SERVICE				
AF4	21335	004	0	30	30	70	00K SERVICE				
AF41	21335	004	0	00	40	1,00	00K SERVICE				
AF5	20023	005	0	30	30	70	00K SERVICE			2nd	
AF51	20023	005	0	00	40	1,00	00K SERVICE			2nd	
AF6	20023	006	0	30	20	70	00K SERVICE			4	
AF61	20023	006	0	00	40	1,00	00K SERVICE			4	
AF7	20023	007	0	30	20	70	00K SERVICE			1	
AF71	20023	007	0	00	40	1,00	00K SERVICE			1	
AF8	1160	015	0	20	20	70	00K SERVICE			2	
AF81	1160	015	0	00	20	70	00K SERVICE			2	
AF9	1160	016	0	20	20	70	00K SERVICE			2	
AF91	1160	016	0	00	20	70	00K SERVICE			2	
AF10	1160	017	0	20	10	20	00K SERVICE			1	
AF101	1160	017	0	00	10	20	00K SERVICE			1	
AF11	1160	018	0	20	10	20	00K SERVICE			2	
AF111	1160	018	0	00	10	20	00K SERVICE			2	
AF12	1160	019	0	20	10	20	00K SERVICE			2	
AF121	1160	019	0	00	10	20	00K SERVICE			2	
AF13	1160	020	0	20	10	20	00K SERVICE			2	
AF131	1160	020	0	00	10	20	00K SERVICE			2	
AF14	1160	021	0	20	10	20	00K SERVICE			2	
AF141	1160	021	0	00	10	20	00K SERVICE			2	
AF15	1160	022	0	20	10	20	00K SERVICE			2	
AF151	1160	022	0	00	10	20	00K SERVICE			2	
AF16	1160	023	0	20	10	20	00K SERVICE			2	
AF161	1160	023	0	00	10	20	00K SERVICE			2	
AF17	1160	024	0	20	10	20	00K SERVICE			2	
AF171	1160	024	0	00	10	20	00K SERVICE			2	
AF18	1160	025	0	20	10	20	00K SERVICE			2	
AF181	1160	025	0	00	10	20	00K SERVICE			2	
AF19	1160	026	0	20	10	20	00K SERVICE			2	
AF191	1160	026	0	00	10	20	00K SERVICE			2	
AF20	1160	027	0	20	10	20	00K SERVICE			2	
AF201	1160	027	0	00	10	20	00K SERVICE			2	
AF21	1160	028	0	20	10	20	00K SERVICE			2	
AF211	1160	028	0	00	10	20	00K SERVICE			2	
AF22	1160	029	0	20	10	20	00K SERVICE			2	
AF221	1160	029	0	00	10	20	00K SERVICE			2	
AF23	1160	030	0	20	10	20	00K SERVICE			2	
AF231	1160	030	0	00	10	20	00K SERVICE			2	
AF24	1160	031	0	20	10	20	00K SERVICE			2	
AF241	1160	031	0	00	10	20	00K SERVICE			2	
AF25	1160	032	0	20	10	20	00K SERVICE			2	
AF251	1160	032	0	00	10	20	00K SERVICE			2	
AF26	1160	033	0	20	10	20	00K SERVICE			2	
AF261	1160	033	0	00	10	20	00K SERVICE			2	
AF27	1160	034	0	20	10	20	00K SERVICE			2	
AF271	1160	034	0	00	10	20	00K SERVICE			2	
AF28	1160	035	0	20	10	20	00K SERVICE			2	
AF281	1160	035	0	00	10	20	00K SERVICE			2	
AF29	1160	036	0	20	10	20	00K SERVICE			2	
AF291	1160	036	0	00	10	20	00K SERVICE			2	
AF30	1160	037	0	20	10	20	00K SERVICE			2	
AF301	1160	037	0	00	10	20	00K SERVICE			2	
AF31	1160	038	0	20	10	20	00K SERVICE			2	
AF311	1160	038	0	00	10	20	00K SERVICE			2	
AF32	1160	039	0	20	10	20	00K SERVICE			2	
AF321	1160	039	0	00	10	20	00K SERVICE			2	
AF33	1160	040	0	20	10	20	00K SERVICE			2	
AF331	1160	040	0	00	10	20	00K SERVICE			2	
AF34	1160	041	0	20	10	20	00K SERVICE			2	
AF341	1160	041	0	00	10	20	00K SERVICE			2	
AF35	1160	042	0	20	10	20	00K SERVICE			2	
AF351	1160	042	0	00	10	20	00K SERVICE			2	
AF36	1160	043	0	20	10	20	00K SERVICE			2	
AF361	1160	043	0	00	10	20	00K SERVICE			2	
AF37	1160	044	0	20	10	20	00K SERVICE			2	
AF371	1160	044	0	00	10	20	00K SERVICE			2	
AF38	1160	045	0	20	10	20	00K SERVICE			2	
AF381	1160	045	0	00	10	20	00K SERVICE			2	
AF39	1160	046	0	20	10	20	00K SERVICE			2	
AF391	1160	046	0	00	10	20	00K SERVICE			2	
AF40	1160	047	0	20	10	20	00K SERVICE			2	
AF401	1160	047	0	00	10	20	00K SERVICE			2	
AF41	1160	048	0	20	10	20	00K SERVICE			2	
AF411	1160	048	0	00	10	20	00K SERVICE			2	
AF42	1160	049	0	20	10	20	00K SERVICE			2	
AF421	1160	049	0	00	10	20	00K SERVICE			2	
AF43	1160	050	0	20	10	20	00K SERVICE			2	
AF431	1160	050	0	00	10	20	00K SERVICE			2	
AF44	1160	051	0	20	10	20	00K SERVICE			2	
AF441	1160	051	0	00	10	20	00K SERVICE			2	
AF45	1160	052	0	20	10	20	00K SERVICE			2	
AF451	1160	052	0	00	10	20	00K SERVICE			2	
AF46	1160	053	0	20	10	20	00K SERVICE			2	
AF461	1160	053	0	00	10	20	00K SERVICE			2	
AF47	1160	054	0	20	10	20	00K SERVICE			2	
AF471	1160	054	0	00	10	20	00K SERVICE			2	
AF48	1160	055	0	20	10	20	00K SERVICE			2	
AF481	1160	055	0	00	10	20	00K SERVICE			2	
AF49	1160	056	0	20	10	20	00K SERVICE			2	
AF491	1160	056	0	00	10	20	00K SERVICE			2	
AF50	1160	057	0	20	10	20	00K SERVICE			2	
AF501	1160	057	0	00	10	20	00K SERVICE			2	
AF51	1160	058	0	20	10	20	00K SERVICE			2	
AF511	1160	058	0	00	10	20	00K SERVICE			2	
AF52	1160	059	0	20	10	20	00K SERVICE			2	
AF521	1160	059	0	00	10	20	00K SERVICE			2	
AF53	1160	060	0	20	10	20	00K SERVICE			2	
AF531	1160	060	0	00	10	20	00K SERVICE			2	
AF54	1160	061	0	20	10	20	00K SERVICE			2	
AF541	1160	061	0	00	10	20	00K SERVICE			2	
AF55	1160	062	0	20	10	20	00K SERVICE			2	
AF551	1160	062	0	00	10	20	00K SERVICE			2	
AF56	1160	063	0	20	10	20	00K SERVICE			2	
AF561	1160	063	0	00	10	20	00K SERVICE			2	
AF57	1160	064	0	20	10	20	00K SERVICE			2	
AF571	1160	064	0	00	10	20	00K SERVICE			2	
AF58	1160	065	0	20	10	20	00K SERVICE			2	
AF581	1160	065	0	00	10	20	00K SERVICE			2	
AF59	1160	066	0	20	10	20	00K SERVICE			2	
AF591	1160	066	0	00	10	20	00K SERVICE			2	
AF60	1160	067	0	20	10	20	00K SERVICE			2	
AF601	1160	067	0	00	10	20	00K SERVICE			2	
AF61	1160	068	0	20	10	20	00K SERVICE			2	
AF611	1160	068	0	00	10	20	00K SERVICE			2	
AF62	1160	069	0	20	10	20	00K SERVICE			2	
AF621	1160	069	0	00	10	20	00K SERVICE			2	
AF63	1160	070	0	20	10	20	00K SERVICE			2	
AF631	1160	070	0	00	10	20	00K SERVICE			2	
AF64	1160	071	0	20	10	20	00K SERVICE			2	
AF641	1160	071	0	00	10	20	00K SERVICE			2	
AF65	1160	072	0	20	10	20	00K SERVICE			2	
AF651	1160	072	0	00	10	20	00K SERVICE			2	
AF66	1160	073	0	20	10	20	00K SERVICE			2	
AF661	1160	073	0	00	10	20	00K SERVICE			2	
AF67	1160	074	0	20	10	20	00K SERVICE			2	
AF671	1160	074	0	00	10	20	00K SERVICE			2	
AF68	1160	075	0	20	10	20	00K SERVICE			2	
AF681	1160	075	0	00	10	20	00K SERVICE			2	
AF69	1160	076	0	20	10	20	00K SERVICE			2	
AF691	1160	076	0	00	10	20	00K SERVICE			2	
AF70	1160	077	0	20	10	20	00K SERVICE			2	
AF701	1160	077	0	00	10	20	00K SERVICE			2	
AF71	1160	078	0	20	10	20	00K SERVICE			2	
AF711	1160	078	0	00	10	20	00K SERVICE			2	
AF72	1160	079	0	20	10	20	00K SERVICE			2	
AF721	1160	079	0	00	10	20	00K SERVICE			2	
AF73	1160	080	0	20	10	20	00K SERVICE			2	
AF731	1160	080	0	00	10	20	00K SERVICE			2	
AF74	1160	081	0	20	10	20	00K SERVICE			2	
AF741	1160	081	0	00	10	20	00K SERVICE			2	
AF75	1160	082	0	20	10	20	00K SERVICE			2	
AF751	1160	082	0	00	10	20	00K SERVICE			2	
AF76	1160	083	0	20	10	20	00K SERVICE			2	
AF761	1160	083	0	00	10	20	00K SERVICE			2	
AF77	1160	084	0	20	10	20	00K SERVICE			2	
AF771	1160	084	0	00	10	20	00K SERVICE		</		

NOTE: (1) H- = PREPULSED; H-F = PUMP FLUX  
(2) LINES ARE IN UNITS OF HERTZ

HUMIDIFIER NUMBER	STEAM	GPM	DESIGN WATER CAPACITY	ENT AIR T	LEW AIR T	TEMP. DIFF. IN-OUT WATER	TEMP. DIFF. IN-OUT STEAM	IN-OUT WATER VALVE HOURS	TEMP. LEW AIR
				°F	°F				°F
001	HR	3249	7	84	61.5	22.5	15	12	118
002	ARC	2049	7	84	61.5	22.5	15	12	118
003	JNC	2049	7	84	61.5	22.5	15	12	118
004	HR	3130	7	84	61.5	22.5	15	12	118
005	ARC	2049	7	84	61.5	22.5	15	12	118
006	JNC	2049	7	84	61.5	22.5	15	12	118

HUMIDIFIER NUMBER	STEAM	GPM	DESIGN WATER CAPACITY	ENT AIR T	LEW AIR T	TEMP. DIFF. IN-OUT WATER	TEMP. DIFF. IN-OUT STEAM	IN-OUT WATER VALVE HOURS	TEMP. LEW AIR
				°F	°F				°F
001	HR	3249	7	84	61.5	22.5	15	12	118
002	ARC	2049	7	84	61.5	22.5	15	12	118
003	JNC	2049	7	84	61.5	22.5	15	12	118
004	HR	3130	7	84	61.5	22.5	15	12	118
005	ARC	2049	7	84	61.5	22.5	15	12	118
006	JNC	2049	7	84	61.5	22.5	15	12	118

COOLING TOWER										
UNIT NUMBER (1)	LOCATION	NUMBER OF CELLS	SPL. EACH CELL	WIRE FT. EACH	EXPOSURES "Y"			FAN MOTOR (1)		
					AIR IN	WATER IN	WATER OUT	SPL. IN	SPL. UP	PHASE WATT
CT1	BOF - 2A	1	1000	12.2	21	66	25	1700	25	2-180
CT2	BOF - 2B	1	1000	12.2	21	66	25	1700	25	2-180
CT3	BOF - 2B	1	1000	12.2	21	66	25	1700	25	2-180

COOLING TOWER										
UNIT NUMBER (1)	LOCATION	NUMBER OF CELLS	SPL EACH CELL	WIRE FT EACH	EXPOSURES "Y"			FAN MOTOR (1)		
					AIR IN	WATER IN	WATER OUT	SPL IN	SPL UP	PHASE WATT
CT1	BOF - 2A	1	1000	12.2	21	66	25	1700	25	2-180
CT2	BOF - 2B	1	1000	12.2	21	66	25	1700	25	2-180
CT3	BOF - 2B	1	1000	12.2	21	66	25	1700	25	2-180

NOTE: (1) PROVIDE UNIT 1/2 SPEED MOTORS, COORDINATE WITHIN W/MANUFACTURER & DIMENSION 18.  
(2) PROVIDE (2) 120V, 3 PHASE, 400V ELECTRIC PUMP MOTORS IN EACH COOLING TOWER.

FANS														
FAN NUMBER	LOCATION	CPS	SP	S/N	TYPE	REMARKS, C/W, VOLTAGE, & OTHERWISE	WHEEL		SPE. PRES.	SOUND	SPE. DB	HORSE		WHEEL C/W TYPE
							TYPE	MM				MM	HP	
SP1	001	16248	8.5	CF	TOP FAN	OK	17	1680	20.1	31	40	2-300	VMC	
SP2	002	20740	8.5	CF	TOP FAN	OK	17	1720	20.2	35	40	2-300	VMC	
SP3	003	24640	8.5	CF	TOP FAN	OK	17	1760	20.3	40	40	2-300	VMC	
SP4	004	21290	8.5	CF	TOP FAN	OK	18	1810	20.7	46	50	2-300	VMC	
SP5	005	23880	7.0	CF	TOP FAN	OK	18	1820	20.7	47	50	2-300	VMC	
SP6	006	22002	8.5	CF	TOP FAN	OK	18	1830	20.7	44	50	2-300	VMC	
SP1	001	13010	1.5	CF	TOP FAN	OK	20	400	10.7	8	10	3-300	VMC	
SP2	002	18880	1.5	CF	TOP FAN	OK	20	430	10.7	8	10	3-300	VMC	
SP3	003	24112	1.5	CF	TOP FAN	OK	20	440	11	14	15	3-300	VMC	
SP4	004	25330	1.5	CF	TOP FAN	OK	20	410	10.3	14	15	3-300	VMC	
SP5	005	23630	1.75	CF	TOP FAN	OK	21	400	10.7	12	15	3-300	VMC	
SP6	006	41000	1.5	CF	TOP FAN	OK	21	400	10.7	15	15	3-300	VMC	
SP1	BOOP - BAO	41000	.25	BY	---	---	8	---	530	10.7	40	1	3-300	SGM
SP2	BOOP - BAO	1540	.25	BY	---	---	8	---	1420	10.7	34	20	3-300	SGM
SP3	BOOP - BAO	2113	.25	BY	---	---	8	---	1200	10.7	34	20	3-300	SGM
SP4	BOOP - BAO	8880	.25	BY	---	---	8	---	880	10.7	13	15	3-300	SGM
SP5	BOOP - BAC	2430	.25	BY	---	---	8	---	1200	10.7	13	5	3-300	SGM
SP6	BOOP - BAC	5500	.25	BY	---	---	8	---	880	10.7	20	20	3-300	SGM
SP7	BOOP - BAC	260	1.80	BY	---	---	8	---	1980	10.7	30	20	3-300	SGM
SP8	BOOP - BAO	1680	1.80	BY	---	---	8	---	1810	10.7	13	15	3-300	SGM
SP9	BOOP - BAO	1680	1.80	BY	---	---	8	---	1820	10.7	13	15	3-300	SGM
SP10	BOOP - BAO	700	1.80	BY	---	---	8	---	1820	10.7	13	15	3-300	SGM
SP11	BOOP - BAC	675	1.35	BY	---	---	8	---	1880	10.7	30	20	3-300	SGM
	BOOP - BAC	1800	1.35	BY	---	---	8	---	1400	10.7	6.4	15	3-300	SGM
SP1	BOOP BAO	21000	.25	BY	REMARKSHEET 1	---	14	800	10.7	7.0	30	3-300	SGM	
SP2	BOOP - BA	22200	.25	BY	REMARKSHEET 1	---	18	800	10.7	2.5	10	3-300	SGM	
SP3	BOOP - BA	22200	.25	BY	REMARKSHEET 1	---	18	800	10.7	2.5	10	3-300	SGM	
SP4	BOOP - BOIT17	55000	.25	BY	---	---	14	400	10.7	4.8	3	3-300	SGM	
SP5	BOOP BAO C-20	11500	.800	CF	REMARKSHEET 1	---	8	350	10.0	3.0	5	3-300	SGM	
SP6	BOOP BAO C-20	11500	.800	CF	REMARKSHEET 1	---	8	350	10.0	3.0	5	3-300	SGM	
SP7														

FANS														
FAN NUMBER	LOCATION	CPS	SP	S/N	TYPE	REMARKS, C/W, VOLTAGE, & OTHERWISE	WHEEL		SPE. PRES.	SOUND	SPE. DB	HORSE		WHEEL C/W TYPE
							TYPE	MM				MM	HP	
SP1	001	16248	8.5	CF	TOP FAN	OK	17	1680	20.1	31	40	2-300	VMC	
SP2	002	20740	8.5	CF	TOP FAN	OK	17	1720	20.2	35	40	2-300	VMC	
SP3	003	24640	8.5	CF	TOP FAN	OK	17	1760	20.3	35	40	2-300	VMC	
SP4	004	21290	8.5	CF	TOP FAN	OK	17	1800	20.7	40	40	2-300	VMC	
SP5	005	23880	7.0	CF	TOP FAN	OK	18	1820	20.7	47	50	2-300	VMC	
SP6	006	22002	8.5	CF	TOP FAN	OK	18	1820	20.7	44	50	2-300	VMC	
SP1	001	13010	1.5	CF	TOP FAN	OK	20	400	10.7	8	10	3-300	VMC	
SP2	002	18880	1.5	CF	TOP FAN	OK	20	430	10.7	8	10	3-300	VMC	
SP3	003	24112	1.5	CF	TOP FAN	OK	20	440	11	14	15	3-300	VMC	
SP4	004	25330	1.5	CF	TOP FAN	OK	20	440	10.7	14	15	3-300	VMC	
SP5	005	23630	1.75	CF	TOP FAN	OK	21	400	10.7	12	15	3-300	VMC	
SP6	006	41000	1.5	CF	TOP FAN	OK	21	400	10.7	15	15	3-300	VMC	
SP1	BOOP - BAO	41000	.35	BF	---	---	8	---	530	10.7	40	1	3-300	SGM
SP2	BOOP - BAO	1540	.25	BF	---	---	8	---	1420	10.7	34	25	3-300	SGM
SP3	BOOP - BAO	2113	.30	BF	---	---	8	---	1200	10.7	34	25	3-300	SGM
SP4	BOOP - BAO	8880	.30	BF	---	---	8	---	880	10.7	13	13	3-300	SGM
SP5	BOOP - BAC	2430	.30	BF	---	---	8	---	1200	10.7	1.8	3	3-300	SGM
SP6	BOOP - BAC	5500	.30	BF	---	---	8	---	880	10.7	20	20	3-300	SGM
SP7	BOOP - BAC	260	1.80	BF	---	---	8	---	1980	10.7	---	---	3-300	SGM
SP8	BOOP - BAO	1680	1.80	BF	---	---	8	---	1010	10.7	13	13	3-300	SGM
SP9	BOOP - BAO	1680	1.80	BF	---	---	8	---	1620	10.7	13	13	3-300	SGM
SP10	BOOP - BAO	700	1.80	BF	---	---	8	---	1200	10.7	1.8	1.8	3-300	SGM
SP11	BOOP - BAC	675	1.30	BF	---	---	8	---	1080	10.7	30	30	3-300	SGM
	BOOP - BAC	1800	8.30	BF	---	---	8	---	1400	10.7	6.4	15	3-300	SGM
SP1	BOOP BAO	21000	.30	CF	REMARKS: 1	---	14	800	10.7	7.0	30	3-300	SGM	
SP2	BOOP - BA	22200	.30	CF	REMARKS: 1	---	18	800	10.7	2.5	10	3-300	SGM	
SP3	BOOP - BA	22200	.30	CF	REMARKS: 1	---	18	800	10.7	2.5	10	3-300	SGM	
SP4	BOOP - BOIT17	55000	.30	BF	---	---	14	400	10.7	4.0	3	3-300	SGM	
SP5	BOOP BAO C-20	11500	.800	CF	REMARKS: 1	---	8	350	10.7	3.0	3	3-300	SGM	
SP6	BOOP BAO C-20	11500	.800	CF	REMARKS: 1	---	8	350	10.7	3.0	3	3-300	SGM	
SP7	BOOP BAO C-20	11500	.800	CF	REMARKS: 1	---	8	350	10.7	3.0	3	3-300	SGM	
SP8	BOOP BAO C-20	11500	.800	CF	REMARKS: 1	---	8	350	10.7	3.0	3	3-300	SGM	
SP9	BOOP BAO C-20	11500	.800	CF	REMARKS: 1	---	8	350	10.7	3.0	3	3-300	SGM	
SP10	BOOP BAO C-20	11500	.800	CF	REMARKS: 1	---	8	350	10.7	3.0	3	3-300	SGM	
SP11	BOOP BAO C-20	11500	.800	CF	REMARKS: 1	---	8	350	10.7	3.0	3	3-300	SGM	
SP12	BOOP BAO C-20	11500	.800	CF	REMARKS: 1	---	8	350	10.7	3.0	3	3-300	SGM	
SP13	BOOP BAO C-20	11500	.800	CF	REMARKS: 1	---	8	350	10.7	3.0	3	3-300	SGM	
SP14	BOOP BAO C-20	11500	.800	CF	REMARKS: 1	---	8	350	10.7	3.0	3	3-300	SGM	
SP15	BOOP BAO C-20	11500	.800	CF	REMARKS: 1	---	8	350	10.7	3.0	3	3-300	SGM	
SP16	BOOP BAO C-20	11500	.800	CF	REMARKS: 1	---	8	350	10.7	3.0	3	3-300	SGM	
SP17	BOOP BAO C-20	11500	.800	CF	REMARKS: 1	---	8	350	10.7	3.0	3	3-300	SGM	
SP18	BOOP BAO C-20	11500	.800	CF	REMARKS: 1	---	8	350	10.7	3.0	3	3-300	SGM	
SP19	BOOP BAO C-20	11500	.800	CF	REMARKS: 1	---	8	350	10.7	3.0	3	3-300	SGM	
SP20	BOOP BAO C-20	11500	.800	CF	REMARKS: 1	---	8	350	10.7	3.0	3	3-300	SGM	
SP21	BOOP BAO C-20	11500	.800	CF	REMARKS: 1	---	8	350	10.7	3.0	3	3-300	SGM	
SP22	BOOP BAO C-20	11500	.800	CF	REMARKS: 1	---	8	350	10.7	3.0	3	3-300	SGM	
SP23	BOOP BAO C-20	11500	.800	CF	REMARKS: 1	---	8	350	10.7	3.0	3	3-300	SGM	
SP24	BOOP BAO C-20	11500	.800	CF	REMARKS: 1	---	8	350	10.7	3.0	3	3-300	SGM	
SP25	BOOP BAO C-20	11500	.800	CF	REMARKS: 1	---	8	350	10.7	3.0	3	3-300	SGM	
SP26	BOOP BAO C-20	11500	.800	CF	REMARKS: 1	---	8	350	10.7	3.0	3	3-300	SGM	
SP27	BOOP BAO C-20	11500	.800	CF	REMARKS: 1	---	8	350	10.7	3.0	3	3-300	SGM	
SP28	BOOP BAO C-20	11500	.800	CF	REMARKS: 1	---	8	350	10.7	3.0	3	3-300	SGM	
SP29	BOOP BAO C-20	11500	.800	CF	REMARKS: 1	---	8	350	10.7	3.0	3	3-300	SGM	
SP30	BOOP BAO C-20	11500	.800	CF	REMARKS: 1	---	8	350	10.7	3.0	3	3-300	SGM	
SP31	BOOP BAO C-20	11500	.800	CF	REMARKS: 1	---	8	350	10.7	3.0	3	3-300	SGM	
SP32	BOOP BAO C-20	11500	.800	CF	REMARKS: 1	---	8	350	10.7	3.0	3	3-300	SGM	
SP33	BOOP BAO C-20	11500	.800	CF	REMARKS: 1	---	8	350	10.7	3.0	3	3-300	SGM	
SP34	BOOP BAO C-20	11500	.800	CF	REMARKS: 1	---	8	350	10.7	3.0	3	3-300	SGM	
SP35	BOOP BAO C-20	11500	.800	CF	REMARKS: 1	---	8	350	10.7	3.0	3	3-300	SGM	
SP36	BOOP BAO C-20	11500	.800	CF	REMARKS: 1	---	8	350	10.7	3.0	3	3-300	SGM	
SP37	BOOP BAO C-20	11500	.800	CF	REMARKS: 1	---	8	350	10.7	3.0	3	3-300	SGM	
SP38	BOOP BAO C-20	11500	.800	CF	REMARKS: 1	---	8	350	10.7	3.0	3	3-300	SGM	
SP39	BOOP BAO C-20	11500	.800	CF	REMARKS: 1	---	8	350	10.7	3.0	3	3-300	SGM	
SP40	BOOP BAO C-20	11500	.800	CF	REMARKS: 1	---	8	350	10.7	3.0	3	3-300	SGM	
SP41	BOOP BAO C-20	11500	.800	CF	REMARKS: 1	---	8	350	10.7	3.0	3	3-300	SGM	
SP42	BOOP BAO C-20	11500	.800	CF	REMARKS: 1	---	8	350	10.7	3.0	3	3-300	SGM	
SP43	BOOP BAO C-20	11500	.800	CF	REMARKS: 1	---	8	350	10.7	3.0	3	3-300	SGM	
SP44	BOOP BAO C-20	11500	.800	CF	REMARKS: 1	---	8	350	10.7	3.0	3	3-300	SGM	
SP45	BOOP BAO C-20	11500	.800	CF	REMARKS: 1	---	8	350	10.7	3.0	3	3-300	SGM	
SP46	BOOP BAO C-20	11500	.800	CF	REMARKS: 1	---	8	350	10.7	3.0	3	3-300	SGM	
SP47	BOOP BAO C-20	11500	.800	CF	REMARKS: 1	---	8	350	10.7	3.0	3	3-300	SGM	
SP48	BOOP BAO C-20	11500	.800	CF	REMARKS: 1	---	8	350	10.7	3.0	3	3-300	SGM	
SP49	BOOP BAO C-20	11500	.800	CF	REMARKS: 1	---	8	350	10.7	3.0	3	3-300	SGM	
SP50	BOOP BAO C-20	11500	.800	CF	REMARKS: 1	---	8	350	10.7	3.0	3	3-300	SGM	
SP51	BOOP BAO C-20	11500	.800	CF	REMARKS: 1	---	8	350	10.7	3.0	3	3-300	SGM	
SP52	BOOP BAO C-20	11500	.800	CF	REMARKS: 1	---	8	350	10.7	3.0	3	3-300	SGM	
SP53	BOOP BAO C-20	11500	.800	CF	REMARKS: 1	---	8	350	10.7	3.0	3	3-300	SGM	
SP54	BOOP BAO C-20	11500	.800	CF	REMARKS: 1	---	8	350	10.7	3.0	3	3-300	SGM	
SP55	BOOP BAO C-20	11500	.800	CF	REMARKS: 1	---	8	350	10.7	3.0	3	3-300	SGM	
SP56	BOOP BAO C-20	11500	.800	CF	REMARKS: 1	---	8	350	10.7	3.0	3	3-300	SGM	
SP57	BOOP BAO C-20	11500	.800	CF	REMARKS: 1	---	8	350	10.7	3.0	3	3-300	SGM	
SP58	BOOP BAO C-20	11500	.800	CF	REMARKS: 1	---	8	350	10.7	3.0	3	3-300	SGM	
SP59	BOOP BAO C-20	11500	.800	CF	REMARKS: 1	---	8	350	10.7	3.0	3	3-300	SGM	
SP60	BOOP BAO C-20	11500	.800	CF	REMARKS: 1	---	8	350	10.7	3.0	3	3-300	SGM	
SP61	BOOP BAO C-20	11500	.800	CF	REMARKS: 1	---	8	350	10.7	3.0	3	3-300	SGM	
SP62	BOOP BAO C-20	11500	.800	CF	REMARKS: 1	---	8	350	10.7	3.0	3	3-300	SGM	
SP63	BOOP BAO C-20	11500	.800	CF	REMARKS: 1	---	8	350	10.7	3.0	3	3-300	SGM	
SP64	BOOP BAO C-20	11500	.800	CF	REMARKS: 1	---	8	350	10.7	3.0	3	3-300	SGM	
SP65	BOOP BAO C-20	11500	.800	CF	REMARKS: 1	---	8	350	10.7	3.0	3	3-300	SGM	
SP66	BOOP BAO C-20	11500	.800	CF	REMARKS: 1	---	8	350	10.7	3.0	3	3-300	SGM	
SP67	BOOP BAO C-20	11500	.800	CF	REMARKS: 1	---	8	350	10.7	3.0	3	3-300	SGM	
SP68	BOOP BAO C-20	11500	.800	CF	REMARKS: 1	---	8	350	10.7	3.0	3	3-300	SGM	
SP69	BOOP BAO C-20	11500	.800	CF	REMARKS: 1	---	8	350	10.7	3.0	3	3-300	SGM	
SP70	BOOP BAO C-20	11500	.800	CF	REMARKS: 1	---	8	350	10.7	3.0	3	3-300	SGM	
SP71	BOOP BAO C-20	11500	.800	CF	REMARKS: 1	---	8	350	10.7	3.0	3	3-300	SGM	
SP72	BOOP BAO C-20	11500	.800	CF	REMARKS: 1	---	8	350	10.7	3.0	3	3-300	SGM	
SP73	BOOP BAO C-20	11500	.800	CF	REMARKS: 1	---	8	350	10.7	3.0	3	3-300	SGM	
SP74	BOOP BAO C-20	11500	.800	CF	REMARKS: 1	---	8	350	10.7	3.0	3	3-300	SGM	
SP75	BOOP BAO C-20	11500	.800	CF	REMARKS: 1	---	8	350	10.7	3.0	3	3-300	SGM	
SP76	BOOP BAO C-20	11500	.800	CF	REMARKS: 1	---	8	350	10.7	3.0	3	3-300	SGM	
SP77	BOOP BAO C-20	11500	.800	CF	REMARKS: 1	---	8	350	10.7	3.0	3	3-300	SGM	
SP78	BOOP BAO C-20	11500	.800	CF	REMARKS: 1	---	8	350	10.7	3.0	3	3-300	SGM	
SP79	BOOP BAO C-20	11500	.800	CF	REMARKS: 1	---	8	350	10.7	3.0	3	3-300	SGM	
SP80	BOOP BAO C-20	11500	.800	CF	REMARKS: 1	---								

**NOTE 1** SCHEDULED WHIMMIS SHIP IS FOR SCHEDULED UP PLAN TEN PERCENT. IF LOW COA, FREIGHT CROPS  
SUBMITTED ARE LESS THAN SCHEDULED, THEN THE UP REQUIREMENT MAY BE REDUCED ACCORDINGLY. WHIMMIS SHIP MAY  
BE BASED ON THE PERCENT OF PLAN TEN PERCENT. SIMILAR SUGGESTION FOR MAY BE SUBMITTED PROVIDED IF MEETS SPECIFIED  
REASON LEVEL.

① VALUES ARE IN DECIBELS OF TONE.

① LAY TO BE PROVIDED CHAIRS FOR COMFORT AIR FLOW, ASSIGNED SECTIONS AND SWAMPERS TO BE SWAMPERS STEEL, FAN TO BE SPARK-PROOF WITH EXPLOSION-PROOF MOTOR.

WATER COOLED CHILLER UNIT														
UNIT NUMBER	LOCATION	REF TYPE	REF CAP (Tons)	DISCHARGE TEMP			DISCHARGE PRESS			CONDENSER				
				REF INLET	REF OUTLET	REF DIFF	REF INLET	REF OUTLET	REF DIFF	REF WATER INLET	REF WATER OUTLET	REF WD DIFF		
CC01	REF 001	REF	200	45	55	10	700	35	40	5	11.5	1000	35	11.5
CC02	REF 002	REF	200	45	55	10	700	35	40	5	11.5	1000	35	11.5
CC03	REF 003	REF	200	45	55	10	700	35	40	5	11.5	1000	35	11.5
CC04	REF 004	REF	200	45	55	10	700	35	40	5	11.5	1000	35	11.5

NOTE: UNITS SHALL USE REFRIGERANT R404A, R407C OR R410A.

WATER COOLED CHILLER UNIT														
UNIT NUMBER	LOCATION	REF TYPE	REF CAP (Tons)	DISCHARGE TEMP			DISCHARGE PRESS			CONDENSER				
				REF INLET	REF OUTLET	REF DIFF	REF INLET	REF OUTLET	REF DIFF	REF WATER INLET	REF WATER OUTLET	REF WD DIFF		
CC01	REF 001	REF	200	45	55	10	700	35	40	5	11.5	1000	35	11.5
CC02	REF 002	REF	200	45	55	10	700	35	40	5	11.5	1000	35	11.5
CC03	REF 003	REF	200	45	55	10	700	35	40	5	11.5	1000	35	11.5
CC04	REF 004	REF	200	45	55	10	700	35	40	5	11.5	1000	35	11.5

NOTE: UNITS SHALL USE REFRIGERANT R404A, R407C OR R410A.

NOTE: UNITS SHALL USE RECOMMENDED MFC-125, 22 OR MFC-136A.

AIR CONDITIONING SYSTEM INDEX								
UNIT NUMBER	LOCATION	AREA SERVED	SUPPLY FAN BRAND	CFM	FILTER	FREEDMAN SYSTEM DIAGRAM	TYPE OF FREEDMAN	
A01	SAC 100-6-C3	GROUND - 1st	SP4	10500	400	FACTORY	NO (1)	MEAN PRESSURE VARIABLE VOLUME
A02	SAC 100-6-B	GROUND - 1st	SP4	30000	400	FACTORY	NO (1)	MEAN PRESSURE VARIABLE VOLUME
A03	SAC 100-6-B	GROUND - 1st	SP3	25000	400	FACTORY	NO (1)	MEAN PRESSURE VARIABLE VOLUME
A04	SAC 100-6-C3	GROUND - 1st	SP4	31000	400	FACTORY	NO (1)	MEAN PRESSURE VARIABLE VOLUME
A05	SAC 100-6-C3	GROUND - 1st	SP4	30000	600	FACTORY	NO (1)	MEAN PRESSURE VARIABLE VOLUME
A06	SAC 100-6-C3	GROUND - 1st	SP4	30000	600	FACTORY	NO (1)	MEAN PRESSURE VARIABLE VOLUME
A07	SAC 100-6-B	GROUND - 1st	SP4	25000	600	FACTORY	NO (1)	MEAN PRESSURE VARIABLE VOLUME

AIR CONDITIONING SYSTEM INDEX								
UNIT NUMBER	LOCATION	AREA SERVED	SUPPLY FAN BRAND	CFM	FILTER	FREEDMAN SYSTEM DIAGRAM	TYPE OF FREEDMAN	
A01	SAC 100-6-C3	GROUND - 1st	SP4	10500	400	FACTORY	NO (1)	MEAN PRESSURE VARIABLE VOLUME
A02	SAC 100-6-B	GROUND - 1st	SP4	30000	400	FACTORY	NO (1)	MEAN PRESSURE VARIABLE VOLUME
A03	SAC 100-6-B	GROUND - 1st	SP3	25000	400	FACTORY	NO (1)	MEAN PRESSURE VARIABLE VOLUME
A04	SAC 100-6-C3	GROUND - 1st	SP4	31000	400	FACTORY	NO (1)	MEAN PRESSURE VARIABLE VOLUME
A05	SAC 100-6-C3	GROUND - 1st 2ND FLOOR - 1st	SP4	30500	600	FACTORY	NO (1)	MEAN PRESSURE VARIABLE VOLUME
A06	SAC 100-6-C3	GROUND - 1st 2ND FLOOR - 1st	SP4	30500	600	FACTORY	NO (1)	MEAN PRESSURE VARIABLE VOLUME
A07	SAC 100-6-B	GROUND - 1st	SP4	25000	600	FACTORY	NO (1)	MEAN PRESSURE VARIABLE VOLUME

① UNIT CHIMES MADE UP OF NON-PERFORATED, UNGLAZED DOUBLE WALL CONSTRUCTION. SEE SPECIFICATIONS. UNIT TO MEET REQUIREMENTS OF ASHRAE STANDARDS FOR EXCELLENT AIR QUALITY.

[illegible][illegible]



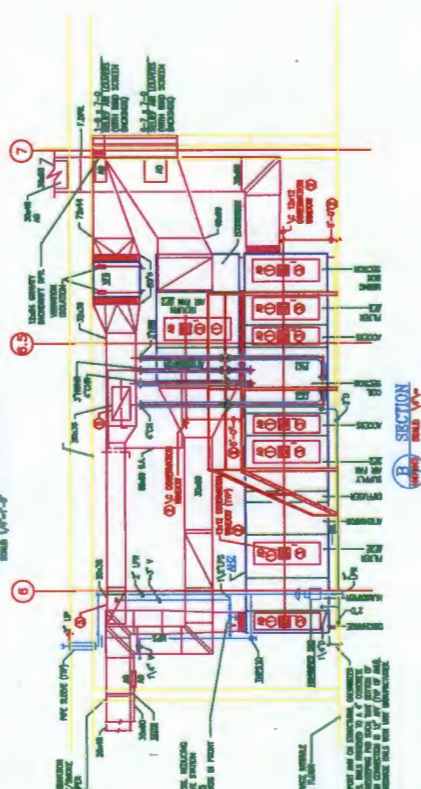




- (1) ACCESS ROOMS SUBJECT TO NEGATIVE VIBRATION MEASUREMENT SHALL OPEN DURING ACCESS ROOMS SUBJECT TO POSITIVE VIBRATION MEASUREMENT SHALL OPEN IMMEDIATELY
- (2) ACCESS ROOMS SHALL BECOME 12x12x10 MINIMUM GLASS CHAMBER ROOMS LOCATED 5'-0" FROM CONCRETE TO BALCONY.
- (3) EACH AN ACCESS ROOM SHALL BE PROVIDED WITH IMMEDIATELY DISCONNECTED EXISTING MACHINE TYPE LOADING FEATURE & APPROPRIATELY BE LEFT UNOCCUPIED. EXISTING CHAMBERS TO BE LEFT UNOCCUPIED TO BE USED FOR FUTURE USE OF THE ACCESS ROOM.
- (4) ALL ACCESS TO BE PROVIDED WITH ACCESS ROOMS & ASSOCIATED APPROPRIATELY BE REACHED FOR AND AS REACHED IN NOTES ABOVE.
- (5) POWER VIBRATION MEASUREMENT, REMOVABLE AND REMOVABLE AS NOTED.
- (6) POWER VIBRATION MEASUREMENT MEASUREMENT AND CLOSING SHALL BE REACHED.

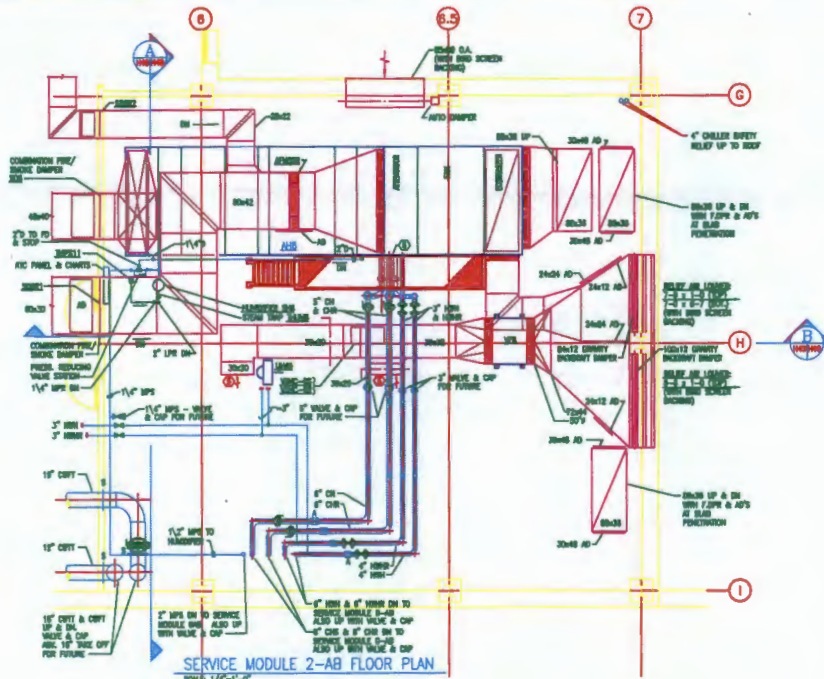
Drawing title: <b>PHASE 4 EQUIPMENT ROOM          PLAN &amp; SECTIONS</b> REVISED 1/10/04	Project title: <b>AMBULATORY CARE ADDITION          VAMC HAMPTON</b>			Date: <b>10 FEB 05</b>	
	Building Number: <b>100</b>			Project No.: <b>200-041</b>	
Approved:	Checked: <b>AS</b>	Drawn: <b>MS</b>	Revision No.: <b>110-1148</b>	Rev. of:	<b>CONSTRUCTION          MANAGEMENT</b>



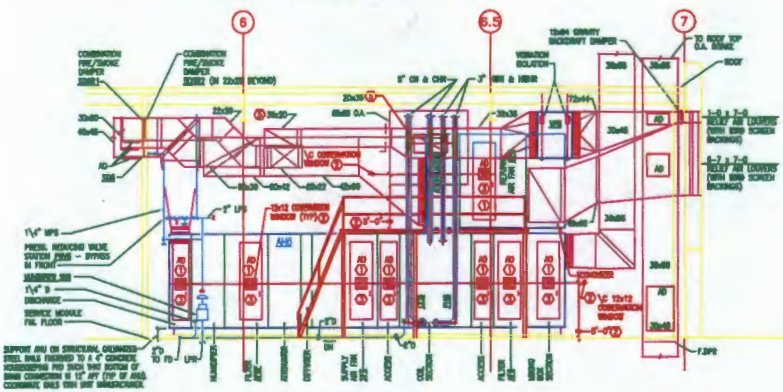




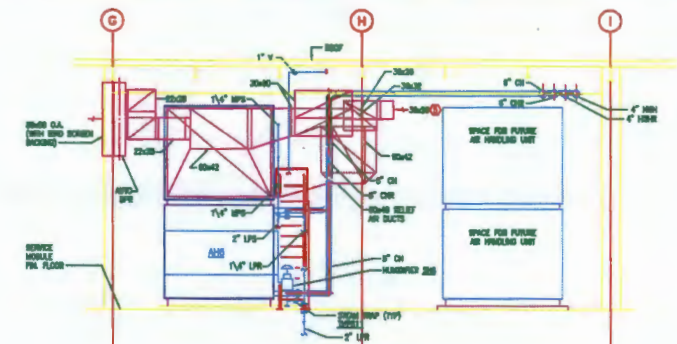




SERVICE MODULE 2-AB FLOOR PLAN  
 SCALE: 1/4"=1'-0"



SECTION B-B  
 SCALE: 1/4"=1'-0"



SECTION H-H  
 SCALE: 1/4"=1'-0"

- PLAN REFERENCE NOTES**
1. ACCESS DOORS SUBJECT TO POSITIVE WATER PRESSURE SHALL OPEN OUTWARD.
  2. ACCESS DOORS SUBJECT TO POSITIVE WATER PRESSURE SHALL OPEN INWARD.
  3. EACH AIR SECTION WITH ACCESS DOOR SHALL BE PROVIDED WITH MANUALLY OPERATED SHUTTER WITH TWO LATCHES, HANDLE & APPROPRIATELY SIZED BRACKETING. CATCHES ATTACHED TO BE LINE WELDED TO THE DOOR FRAME SIDE OF THE ACCESS DOOR.
  4. ALL JAWS TO BE PROVIDED WITH ACCESS DOORS & ASSOCIATED APPROPRIATELY SIZED BRACKETING WITH TWO LATCHES, HANDLE & APPROPRIATELY SIZED BRACKETING. CATCHES ATTACHED TO BE LINE WELDED TO THE DOOR FRAME SIDE OF THE ACCESS DOOR.
  5. FLOOR 1/4"=1'-0" DIMENSIONED SHALL REMAIN EXPOSED AND SHALL BE WELDED TO THE DOOR FRAME SIDE OF THE ACCESS DOOR.
  6. FLOOR 1/4"=1'-0" DIMENSIONED SHALL REMAIN EXPOSED AND SHALL BE WELDED TO THE DOOR FRAME SIDE OF THE ACCESS DOOR.



Drawing Title <b>AHS EQUIPMENT ROOM          PLAN &amp; SECTIONS</b> Scale: 1/4"=1'-0"	Project Title <b>AMBULATORY CARE ADDITION          VAMC HAMPTON</b>		
	Building Number 100	Drawing No. 110-1149	Date 10 FEB 88
Location HAMPTON, VIRGINIA	Checked J.A.	Drawn J.A.	Design J.A.

