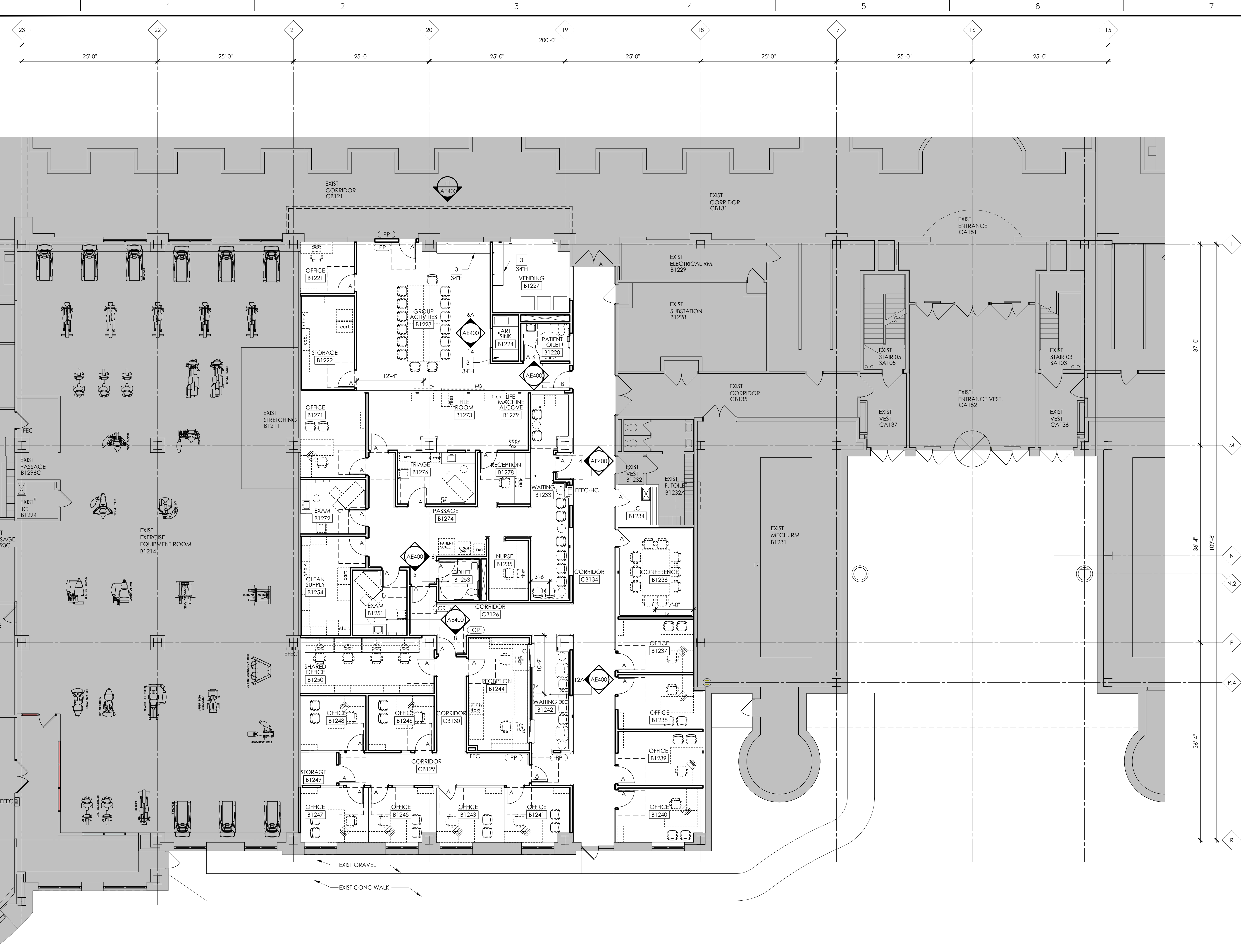


three eighths inch = one foot  
one eighth inch = one foot  
one quarter inch = one foot  
one half inch = one foot  
three quarters inch = one foot  
one inch = one foot  
one and one half inches = one foot  
two inches = one foot  
three inches = one foot  
four inches = one foot  
five inches = one foot  
six inches = one foot  
seven inches = one foot  
eight inches = one foot  
nine inches = one foot  
ten inches = one foot  
eleven inches = one foot  
twelve inches = one foot  
thirteen inches = one foot  
fourteen inches = one foot  
fifteen inches = one foot  
sixteen inches = one foot  
seventeen inches = one foot  
eighteen inches = one foot  
nineteen inches = one foot  
twenty inches = one foot  
twenty one inches = one foot  
twenty two inches = one foot  
twenty three inches = one foot  
twenty four inches = one foot  
twenty five inches = one foot  
twenty six inches = one foot  
twenty seven inches = one foot  
twenty eight inches = one foot  
twenty nine inches = one foot  
thirty inches = one foot  
thirty one inches = one foot  
thirty two inches = one foot  
thirty three inches = one foot  
thirty four inches = one foot  
thirty five inches = one foot  
thirty six inches = one foot  
thirty seven inches = one foot  
thirty eight inches = one foot  
thirty nine inches = one foot  
forty inches = one foot  
forty one inches = one foot  
forty two inches = one foot  
forty three inches = one foot  
forty four inches = one foot  
forty five inches = one foot  
forty six inches = one foot  
forty seven inches = one foot  
forty eight inches = one foot  
forty nine inches = one foot  
fifty inches = one foot  
fifty one inches = one foot  
fifty two inches = one foot  
fifty three inches = one foot  
fifty four inches = one foot  
fifty five inches = one foot  
fifty six inches = one foot  
fifty seven inches = one foot  
fifty eight inches = one foot  
fifty nine inches = one foot  
sixty inches = one foot  
sixty one inches = one foot  
sixty two inches = one foot  
sixty three inches = one foot  
sixty four inches = one foot  
sixty five inches = one foot  
sixty six inches = one foot  
sixty seven inches = one foot  
sixty eight inches = one foot  
sixty nine inches = one foot  
seventy inches = one foot  
seventy one inches = one foot  
seventy two inches = one foot  
seventy three inches = one foot  
seventy four inches = one foot  
seventy five inches = one foot  
seventy six inches = one foot  
seventy seven inches = one foot  
seventy eight inches = one foot  
seventy nine inches = one foot  
eighty inches = one foot  
eighty one inches = one foot  
eighty two inches = one foot  
eighty three inches = one foot  
eighty four inches = one foot  
eighty five inches = one foot  
eighty six inches = one foot  
eighty seven inches = one foot  
eighty eight inches = one foot  
eighty nine inches = one foot  
ninety inches = one foot  
ninety one inches = one foot  
ninety two inches = one foot  
ninety three inches = one foot  
ninety four inches = one foot  
ninety five inches = one foot  
ninety six inches = one foot  
ninety seven inches = one foot  
ninety eight inches = one foot  
ninety nine inches = one foot  
one hundred inches = one foot



- CONSTRUCTION GENERAL NOTES:**
1. REFER TO SHEET AE001 FOR GENERAL NOTES AND ARCHITECTURAL SYMBOLS
  2. PATCH AND REPAIR WALL AND FLOOR OPENINGS TO MATCH ADJACENT EXISTING CONSTRUCTION, INCLUDING FINISH MATERIALS AFTER REMOVAL OF EXISTING MECHANICAL AND ELECTRICAL EQUIPMENT.
  3. PROVIDE REDUCER STRIPS AT TRANSITION OF FLOOR MATERIALS.  
- MAXIMUM CHANGE IN LEVEL=1/4"  
- BEVEL WITH 1:2 SLOPE FOR CHANGE IN LEVEL 1/4" TO 1/2"
  4. REFER TO DEMOLITION SHEETS FOR TEMPORARY WALL LOCATIONS AND DETAIL
  5. REFER TO SHEET AE110 FOR PARTITION DIMENSIONS AND DESIGNATIONS
  6. REFER TO DETAIL 18/ SHEET AE500 FOR CONCRETE SLAB/ DECK REPAIRS
  7. MARKER & TACK BOARDS FURNISHED & INSTALLED BY THE VA (GG)

**FLOOR PLAN LEGEND**

- CR CARD READER  
PP PUSH PLATE  
EPEC EXIST FIRE EXTINGUISHER CABINET  
EPEC-HC EXIST FIRE EXTINGUISHER AND HOSE CABINET  
TEMP PTN SEE AD101  
INDICATES EXISTING CONSTRUCTION TO REMAIN, UNO

**FLOOR PLAN NOTES**

- 1 ADJUSTABLE SHELVING (20" DEEP), CC  
2 ROD & SHELF, REFER TO DETAIL 12/ SHEET AE500, CC  
3 SOLID SURFACE COUNTERTOP & BACKSPASH, REFER TO DETAIL 8/ SHEET AE500, CC

0" 4'-0" 8'-0" 16'-0"  
1/8" = 1'-0"

**FULLY SPRINKLERED - CONSTRUCTION DOCUMENTS**

Drawing Title  
**FIRST FLOOR PLAN AND NOTES - ZONE 3**

Approved  
**J. HROVAT**

Project Title  
**JOHN D. DINGELL  
VA MEDICAL CENTER DETROIT  
RENOVATE 1ST FLOOR CLINICS**

Location  
**DETROIT, MICHIGAN**  
Date  
**08-12-15**

Project Number  
**553-13-122**  
Building Number  
**B-100**

Drawing Number  
**AE100**  
Dwg. 7 of 78

Office of  
Construction  
and Facilities  
Management

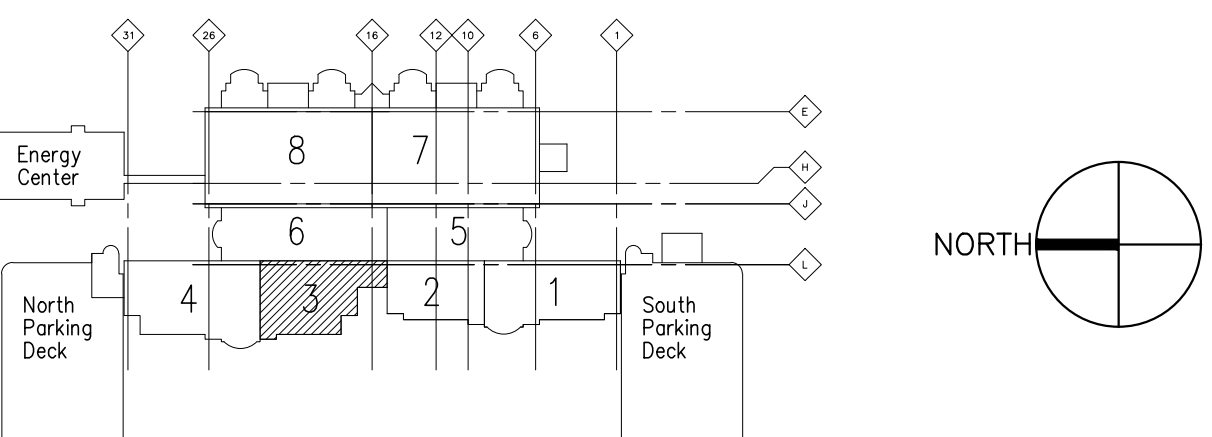
Department of  
Veterans Affairs

**ARCHITECT/ENGINEERS:**



**Albert Kahn Associates, Inc.**  
Albert Kahn Building  
7430 Second Ave.  
Detroit, Michigan 48202-2798  
Albert Kahn Associates, Inc. is a member of  
the Albert Kahn Family of Companies. © 2007  
**ALBERT KAHN JOB # 0398-0000**

**KEY PLAN**



ISSUE 005 - RECORD	02-23-18
ISSUE 003 - BID	08-12-15
ISSUE 002 - CD OWNER REVIEW	05-29-15
Revisions:	Date