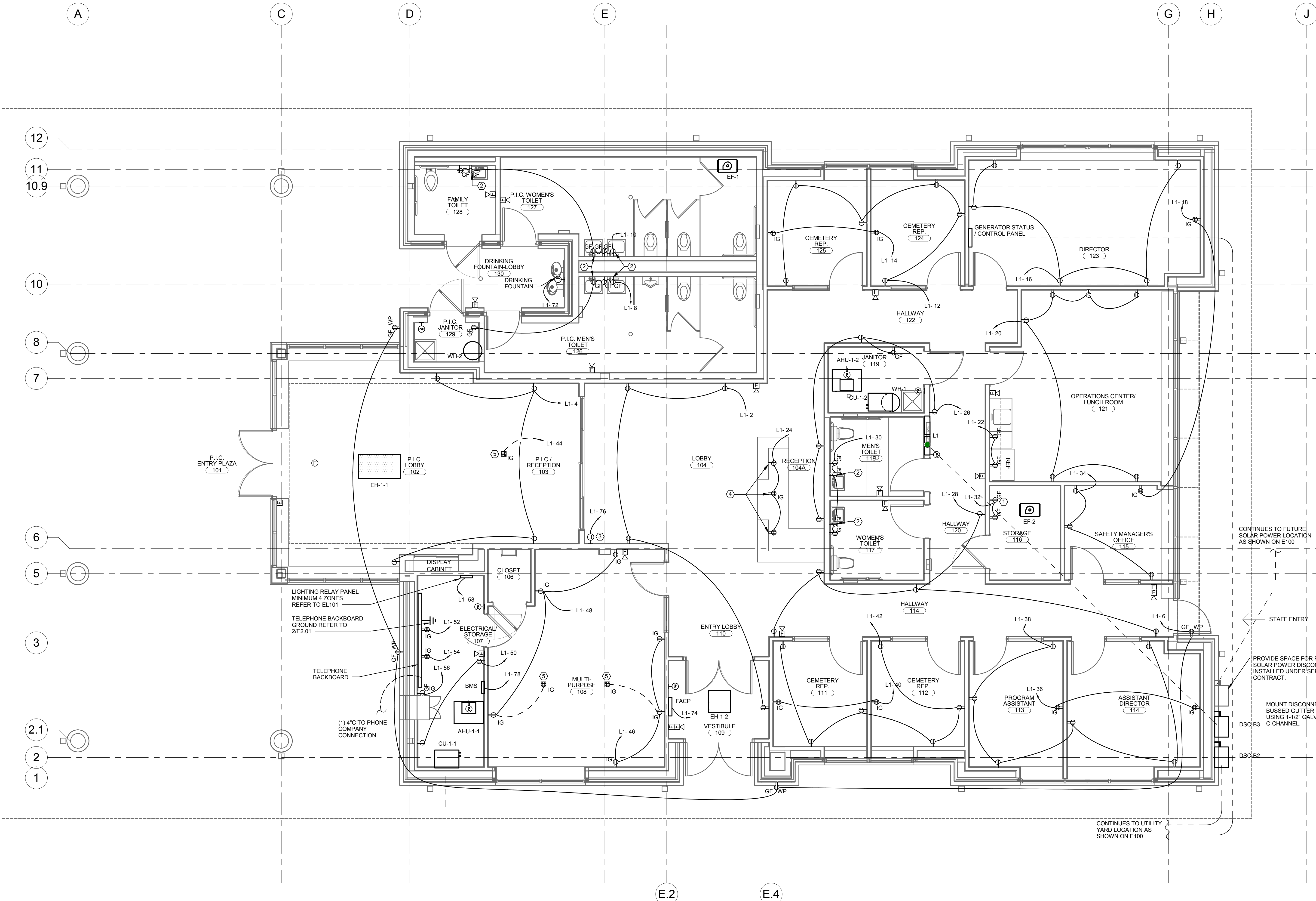


KEY NOTES: (X)

1. PROVIDE RECEPTACLE IN ATTIC SPACE. MOUNT 24" ABOVE TOP OF JOIST TO STRUCTURE WITHIN 5 FEET OF HATCH.
2. PROVIDE RECEPTACLE FOR AUTOMATIC FAUCET CONTROLLER.
3. PROVIDE JUNCTION BOX FOR AUTOMATIC DOOR. REFER TO MANUFACTURE FOR CONNECTION INFORMATION.
4. RECEPTACLES MOUNTED IN MILLWORK. REFER TO ARCHITECTURAL DRAWINGS FOR EXACT LOCATIONS.
5. PROVIDE FLUSH MOUNTED FLOOR BOX WITH A MINIMUM SPACE FOR 2 DUPLEX RECEPTACLES AND 2 SINGLE GANG SPACES FOR VOICEDATA AND AV.
6. PROVIDE SINGLE STATION ELECTRIC VEHICLE CHARGING STATION. WIRE USING 3/8" I/G. 34°C. PROVIDE 4" CONCRETE BASE AND LOCATE CHARGING STATION BY END PARKING SPOT. COORDINATE LOCATION WITH CIVIL DRAWINGS.

SHEET NOTES:

1. REFER TO SHEET E002 FOR MECHANICAL EQUIPMENT SCHEDULE.
2. ALL 125V 15A AND 20A RECEPTACLES IN LOBBY AREA SHALL BE LISTED TAMPER-RESISTANT RECEPTACLES.
3. ALL RECEPTACLES 125V AND 250V, 15A AND 20A RECEPTACLES IN DAMP OR WET LOCATIONS SHALL BE LISTED WEATHER-RESISTANT RECEPTACLES.
4. REFER TO SPECIFICATION FOR LIGHTNING PROTECTION INFORMATION.
5. PROVIDE PHOTOCELL FOR RELAY PANEL. MOUNT PER MANUFACTURER'S RECOMMENDED INSTRUCTIONS TO EXTERIOR OF BUILDING IN A LOCATION WITH MINIMAL VISIBILITY TO THE PUBLIC.



1 Power Floor Plan  
EP101 1/4" = 1'-0"

SCALE: 1/4" = 1'-0"

ELECTRIC VEHICLE CHARGING STATION

7-30-2012

<div>Revisions</div> <div>Date</div>	<div>CIVIL ENGINEER/LANDSCAPE ARCHITECTURE</div> <div>ARCHITECTURE</div> <div>MACTEC</div> <div>MACTEC ENGINEERING AND CONSULTING, INC. 3200 TOWN POINT DR., KENNESAW, GA. 30144 TEL: (770) 421-3400 FAX: (770) 421-3486</div> <div>MACTEC PROJECT: 6151-10-0085</div>	<div>ARCHITECTURE</div> <div>MATRIX SETTLES</div> <div>1220 N. FILLMORE ST. SUITE 300 ARLINGTON, VA 22211 703-525-0424</div>	<div>MEP ENGINEER</div> <div>Thompson Company</div> <div>consulting engineers</div> <div>29094</div> <div>50 Technology Parkway South Norcross, Georgia 30092</div> <div>404.266.1400 www.tcieng.com</div> <div>Atlanta Dubai, UAE</div> <div>Orlando Mexico City, Mexico</div> <div>Houston Tortola, BVI</div>	<div>SURVEY</div> <div>HALDER SURVEYS</div> <div>10400 CHESTER ROAD, CHESTER, VA 23831 TEL: (804) 746-8707 FAX: (804) 746-8708</div>	<div>NATIONAL CEMETERY ADMINISTRATION</div>	<div>Drawing Title</div> <div>Power Floor Plan - Electrical</div> <div>Approved: Director, Technical Support Service</div> <div>Approved: Chief, Architectural &amp; Engineering Division</div>	<div>Project Title</div> <div>ADMINISTRATION / PUBLIC INFORMATION BUILDING QUANTICO NATIONAL CEMETERY</div> <div>Building Number</div> <div>Checked TN</div> <div>Drawn HW</div> <div>Location</div> <div>18424 JOPLIN ROAD TRIANGLE, VIRGINIA</div>	<div>Date</div> <div>07-30-12</div> <div>Project No.</div> <div>872CM3035</div> <div>DRAWING NO.</div> <div>EP101</div> <div>Dwg. 67 of 80</div>
--------------------------------------	--	--	---	--	---	---	--	--