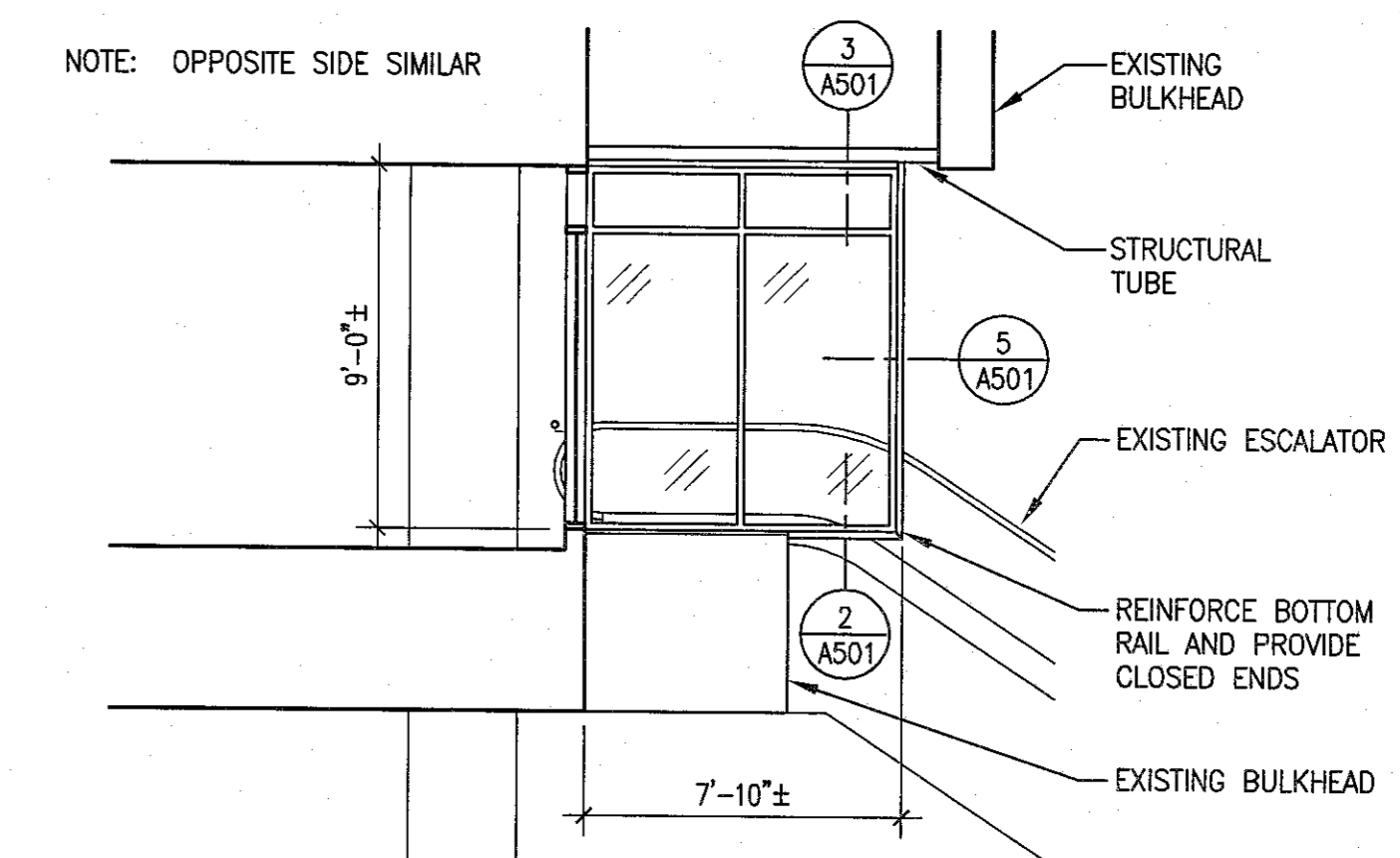
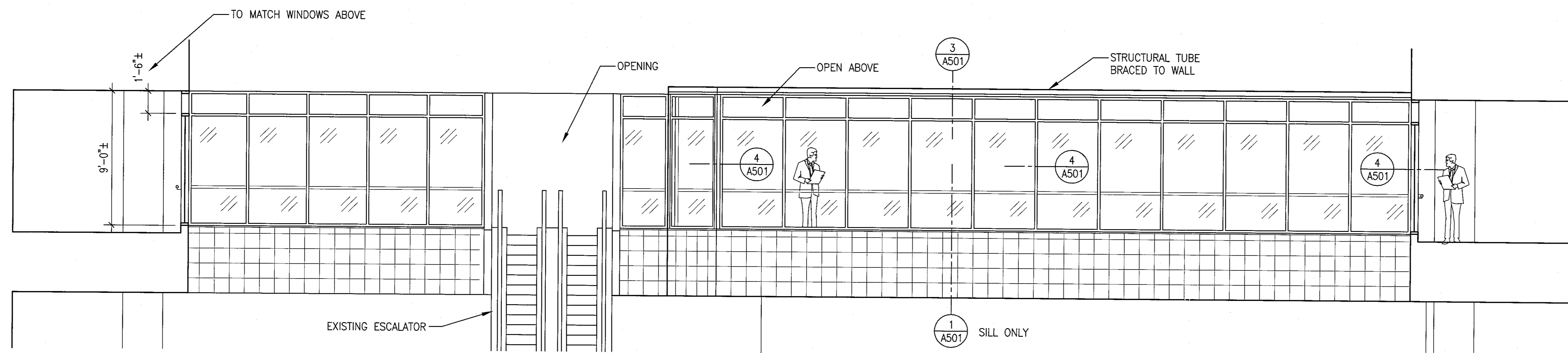


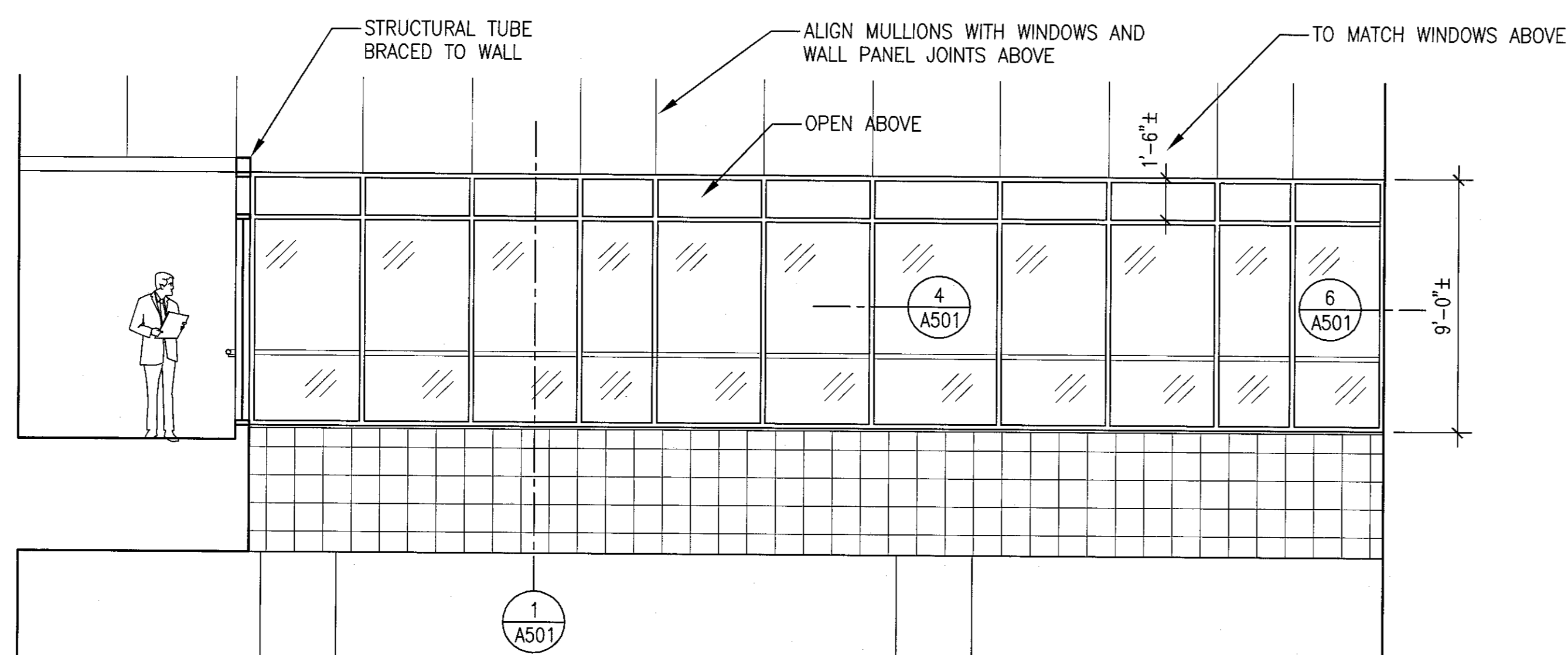
1 SOUTH ELEVATION
SCALE: 1/4" = 1'-0"



2 ELEVATION AT ESCALATOR
SCALE: 1/4" = 1'-0"



3 WEST ELEVATION
SCALE: 1/4" = 1'-0"



4 NORTH ELEVATION
SCALE: 1/4" = 1'-0"

GENERAL NOTES:

1. ALL DIMENSIONS ARE APPROXIMATE AND SHALL BE FIELD VERIFIED.
2. CUT, PATCH AND REPAIR EXISTING WALLS, CURBS, BULKHEADS AND CEILINGS TO MATCH EXISTING CONSTRUCTION.
3. REPAINT AREA TO MATCH EXISTING, CORNER TO CORNER, UP TO FIRST PANEL ABOVE BOT. OF BULKHEADS.

100% SUBMISSION

ENGINEER: EBL ENGINEERS, LLC MECHANICAL & ELECTRICAL 8005 HARFORD ROAD BALTIMORE, MARYLAND 21234 (410) 668-8000		ARCHITECT: BECK, POWELL & PARSONS Architecture - Planning - Interior Design 29 W. Susquehanna Ave., Suite 300 Towson, Maryland 21204 Phone: 410-828-9220		Drawing Title INTERIOR ELEVATIONS Approved: Project Director		Project Title - ATRIUM RAIL - - Location - BALTIMORE, MD Date 6/18/12		Project Number - 512-11-140 Building Number - Drawing Number A-201 Dwg. 3 of 6		Office of Construction and Facilities Management Department of Veterans Affairs	
ENGINEER: EBL ENGINEERS, LLC MECHANICAL & ELECTRICAL 8005 HARFORD ROAD BALTIMORE, MARYLAND 21234 (410) 668-8000		ARCHITECT: BECK, POWELL & PARSONS Architecture - Planning - Interior Design 29 W. Susquehanna Ave., Suite 300 Towson, Maryland 21204 Phone: 410-828-9220		Drawing Title INTERIOR ELEVATIONS Approved: Project Director		Project Title - ATRIUM RAIL - - Location - BALTIMORE, MD Date 6/18/12		Project Number - 512-11-140 Building Number - Drawing Number A-201 Dwg. 3 of 6		Office of Construction and Facilities Management Department of Veterans Affairs	