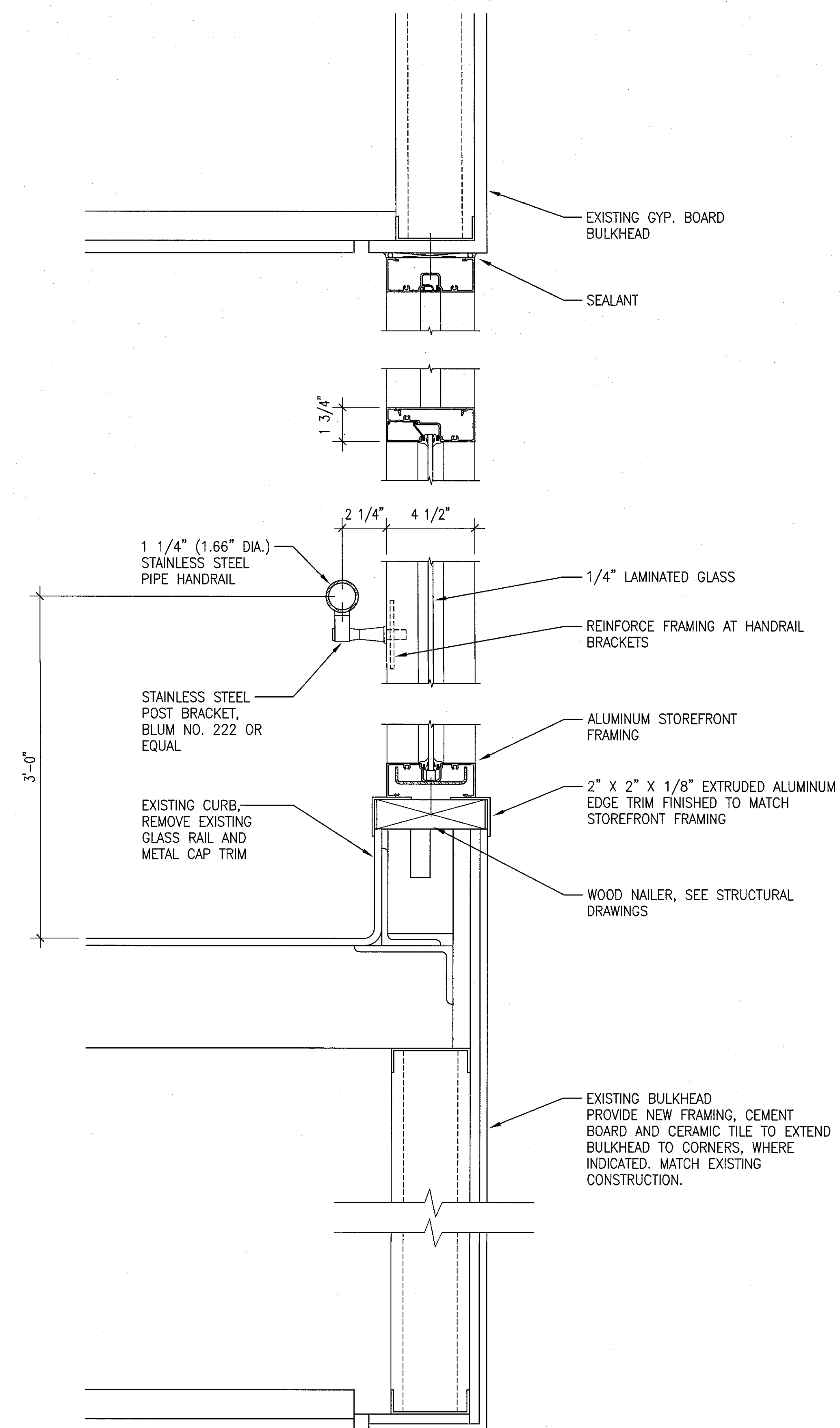
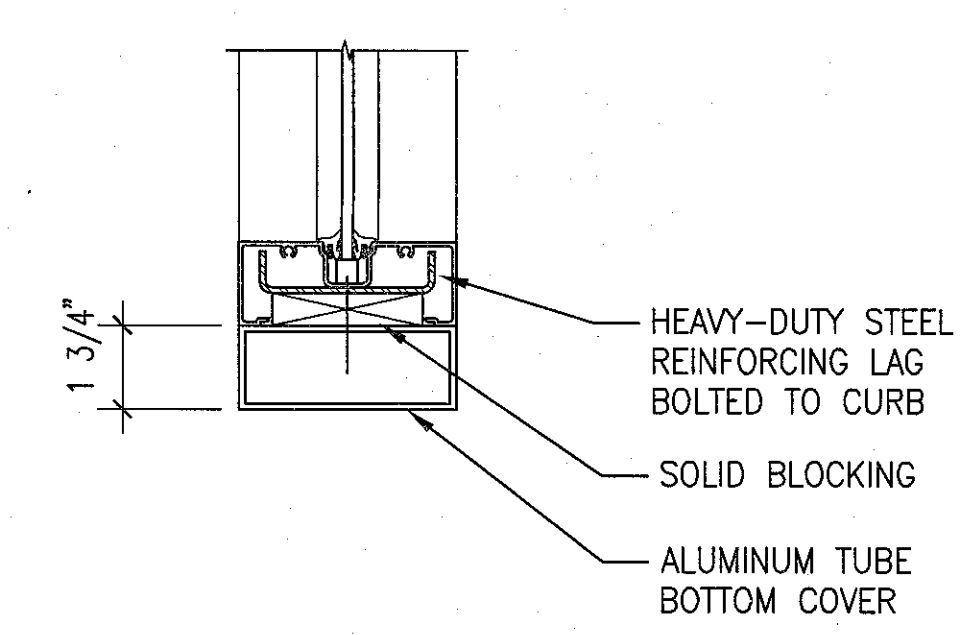


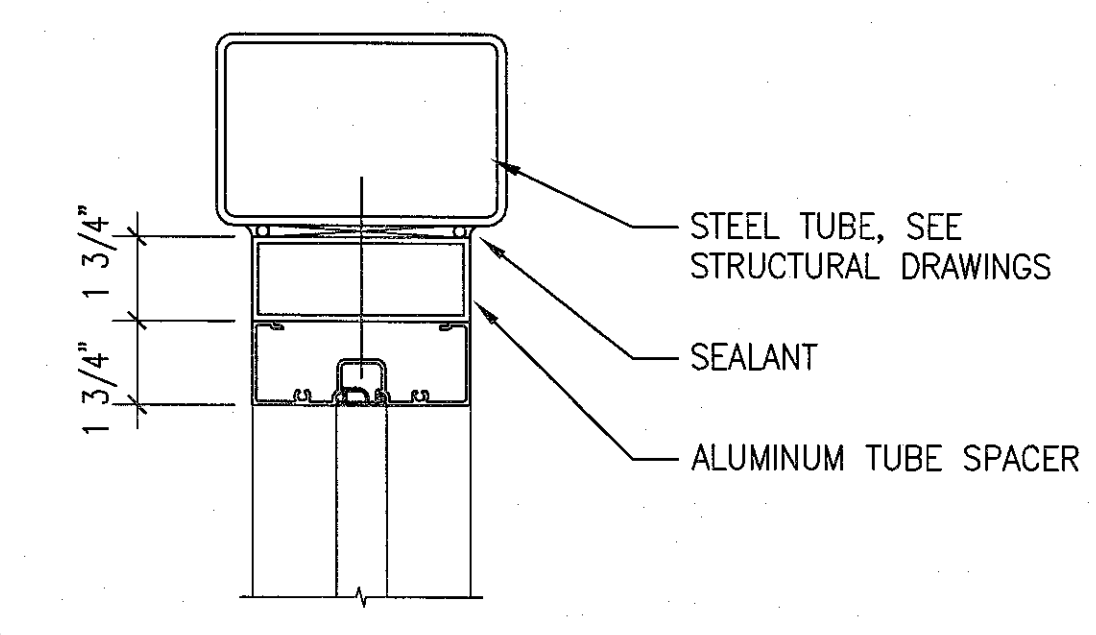
three inches = one foot
one and one half inches = one foot
one inch = one foot
three quarters inch = one foot
one half inch = one foot
one quarter inch = one foot
three eighths inch = one foot
one eighth inch = one foot
one quarter inch = one foot
one eighth inch = one foot



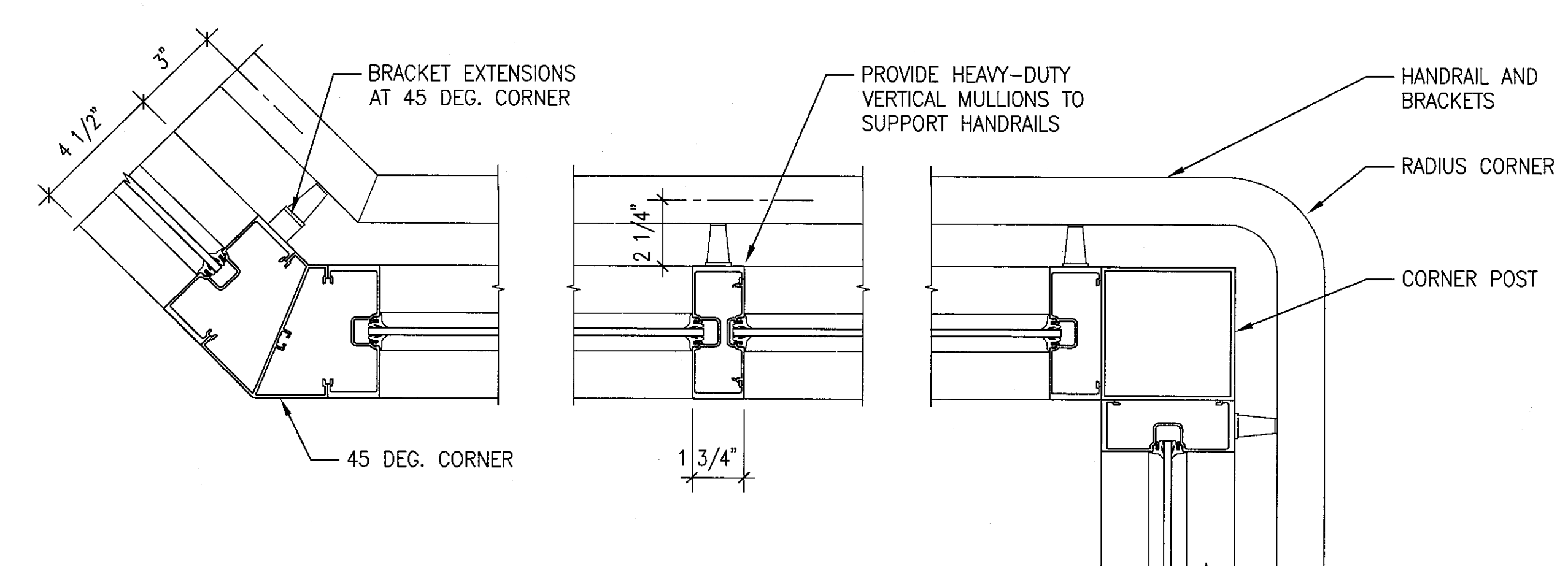
1 DETAIL SECTION
SCALE: 3" = 1'-0"



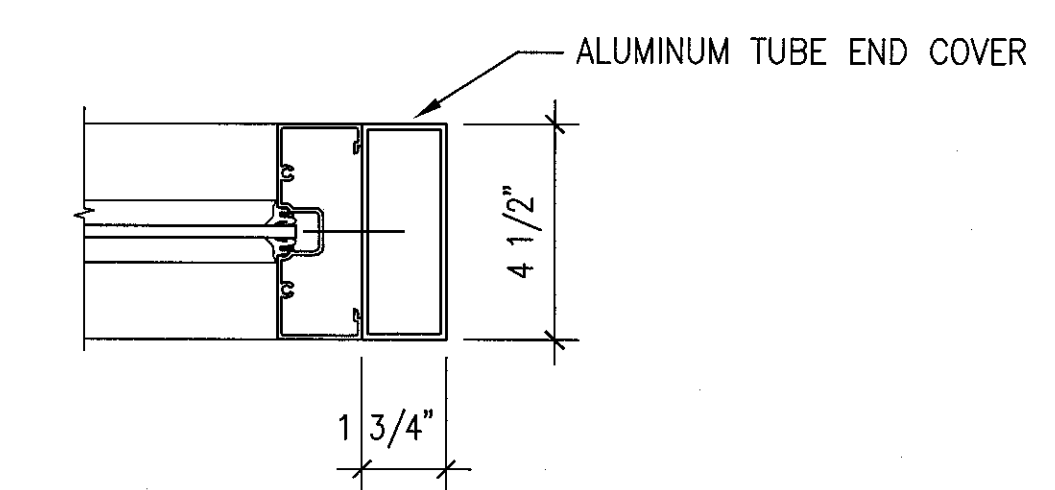
2 BOTTOM SUPPORT
SCALE: 3" = 1'-0"



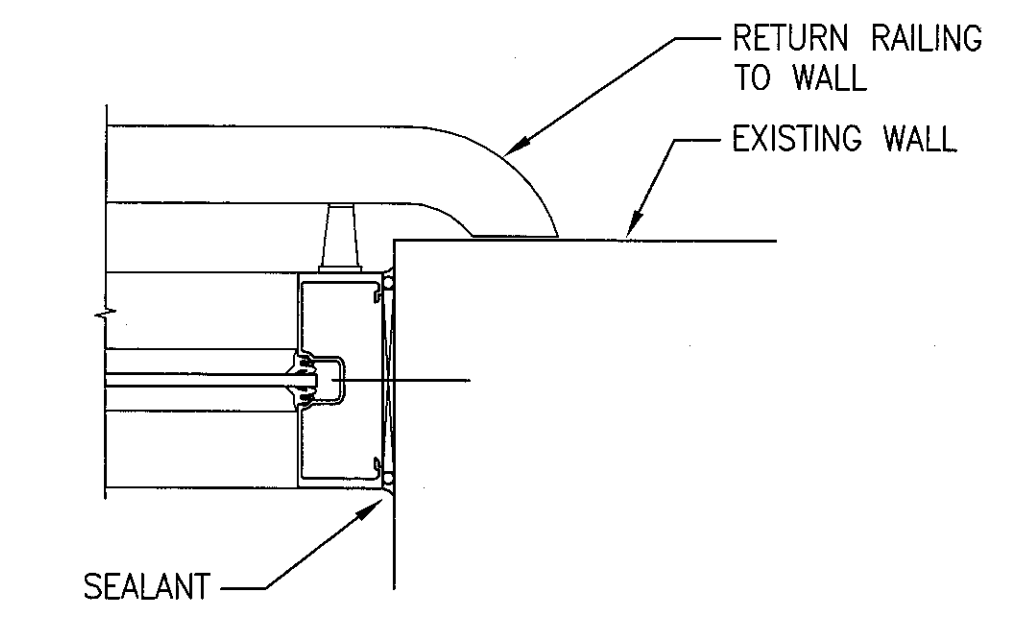
3 TOP SUPPORT
SCALE: 3" = 1'-0"



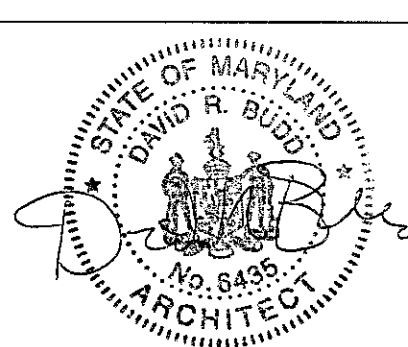
4 PLAN DETAILS
SCALE: 3" = 1'-0"



5 FINISHED END
SCALE: 3" = 1'-0"



6 WALL TERMINATION
SCALE: 3" = 1'-0"

ENGINEER: EBL ENGINEERS, LLC MECHANICAL & ELECTRICAL: 8005 HARFORD ROAD BALTIMORE, MARYLAND 21234 (410) 668-8000		CENTURY ENGINEERING STRUCTURAL 10710 GILROY ROAD HUNT VALLEY, MARYLAND 21031 (443) 589-2400				ARCHITECT: BECK, POWELL & PARSONS Architecture - Planning - Interior Design 29 W. Susquehanna Ave., Suite 300 Towson, Maryland 21204 Phone: 410-828-9220		Drawing Title SECTIONS AND DETAILS Approved: Project Director		Project Title - ATRIUM RAIL - - Location - BALTIMORE, MD Date - 6/18/12 Checked ESB Drawn DRB		Project Number - 512-11-140 Building Number - Drawing Number A-501 Dwg. 4 of 6		100% SUBMISSION Office of Construction and Facilities Management Department of Veterans Affairs	
Revisions:		Date													