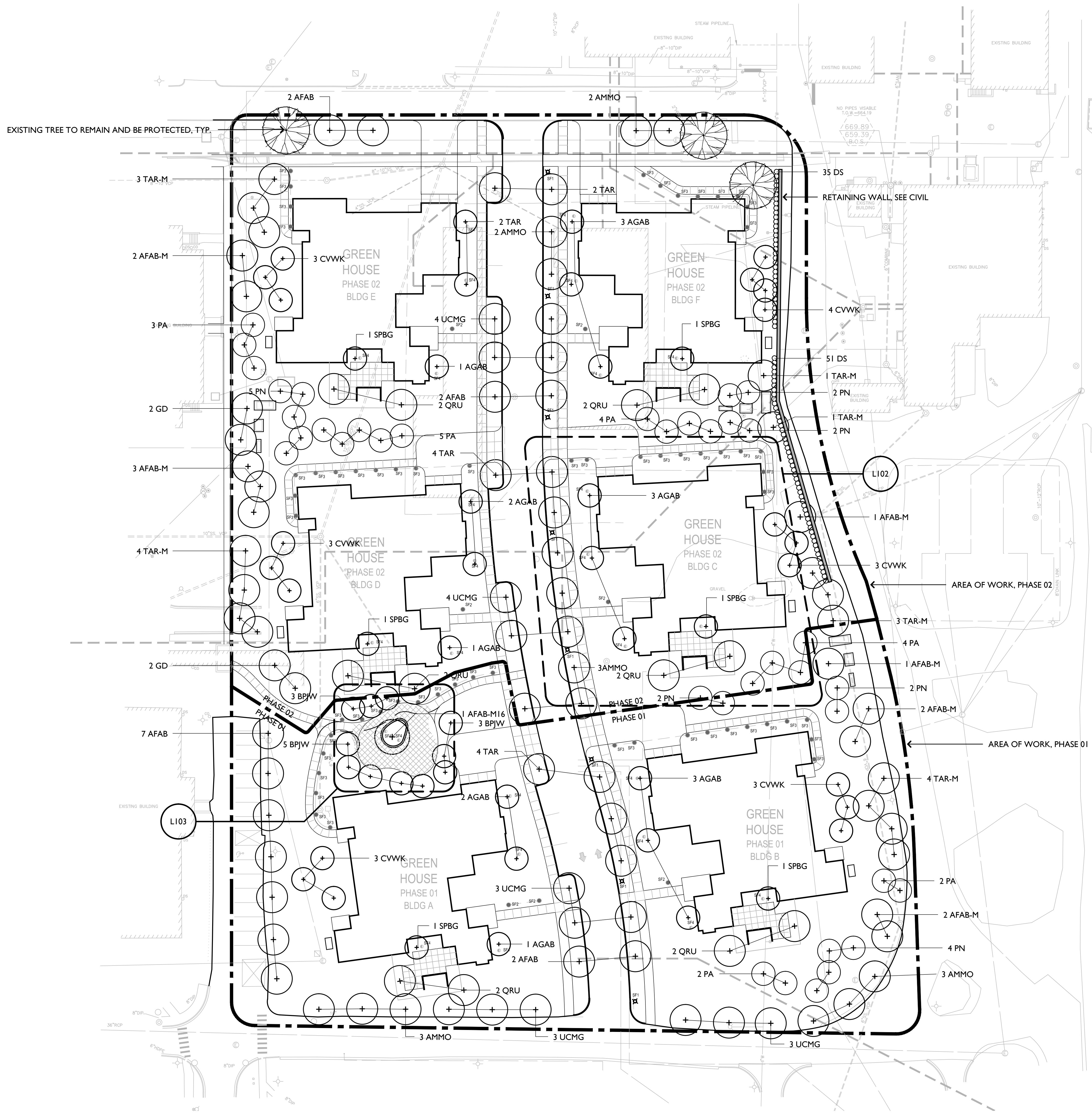




NOTES:

- 1) ALL LANDSCAPE AREAS TO BE SEEDED LAWN UNLESS NOTED OTHERWISE
- 2) ALL PERENNIAL AND SHRUB BEDS TO BE IRRIGATED



PROGRESS SET - NOT FOR CONSTRUCTION

Revisions:	Date
ISSUED FOR CONSTRUCTION	06.15.2012
Bld Documents 100%	06.15.2011
Construction Documents 90%	05.20.2011
Design Development	04.13.2011

CONSULTANTS:

ARCHITECT/ENGINEERS:

Architect: PERKINS EASTMAN ARCHITECTS PC 351 W. HUBBARD STREET SUITE 708 CHICAGO, IL 60654 PE PROJECT NO. 080620 PH 312.755.1200 FAX 755.155	Civil: GEWALT HAMILTON ASSOCIATES, INC. 890 FOREST EDGE DRIVE VERNON HILLS, IL 60061 PH 847.478.9700 FAX 478.9701	Landscape: WOLFF LANDSCAPE ARCHITECTURE INC 307 N. MICHIGAN AVENUE SUITE 601 CHICAGO, IL 60601 PH 312.552.5484 FAX 683.5487	Structural, MEPFP: HENNEMAN ENGINEERING INC 200 S. WACKER DRIVE SUITE 850 CHICAGO, IL 60606 PH 312.583.1400 FAX 583.1401
---	--	---	--

Drawing Title
**OVERALL SITE AND
LANDSCAPE PLAN**

Approved: Project Director

Project Title
Veterans Affairs
North Chicago Medical Center
Green House - Phase 02

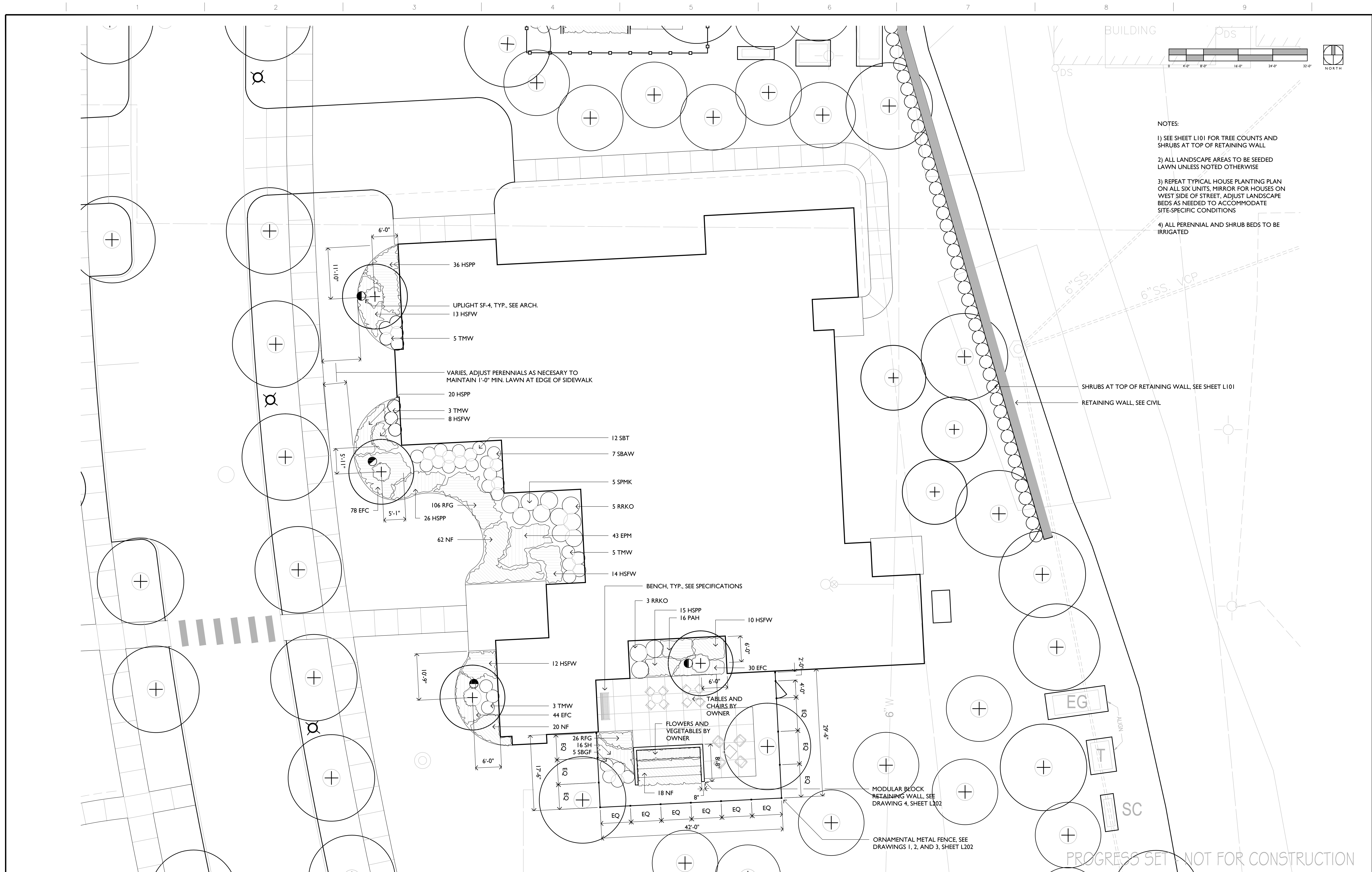
Location
North Chicago, Illinois
Date
06/15/2012

Project Number
556-304
Building Number

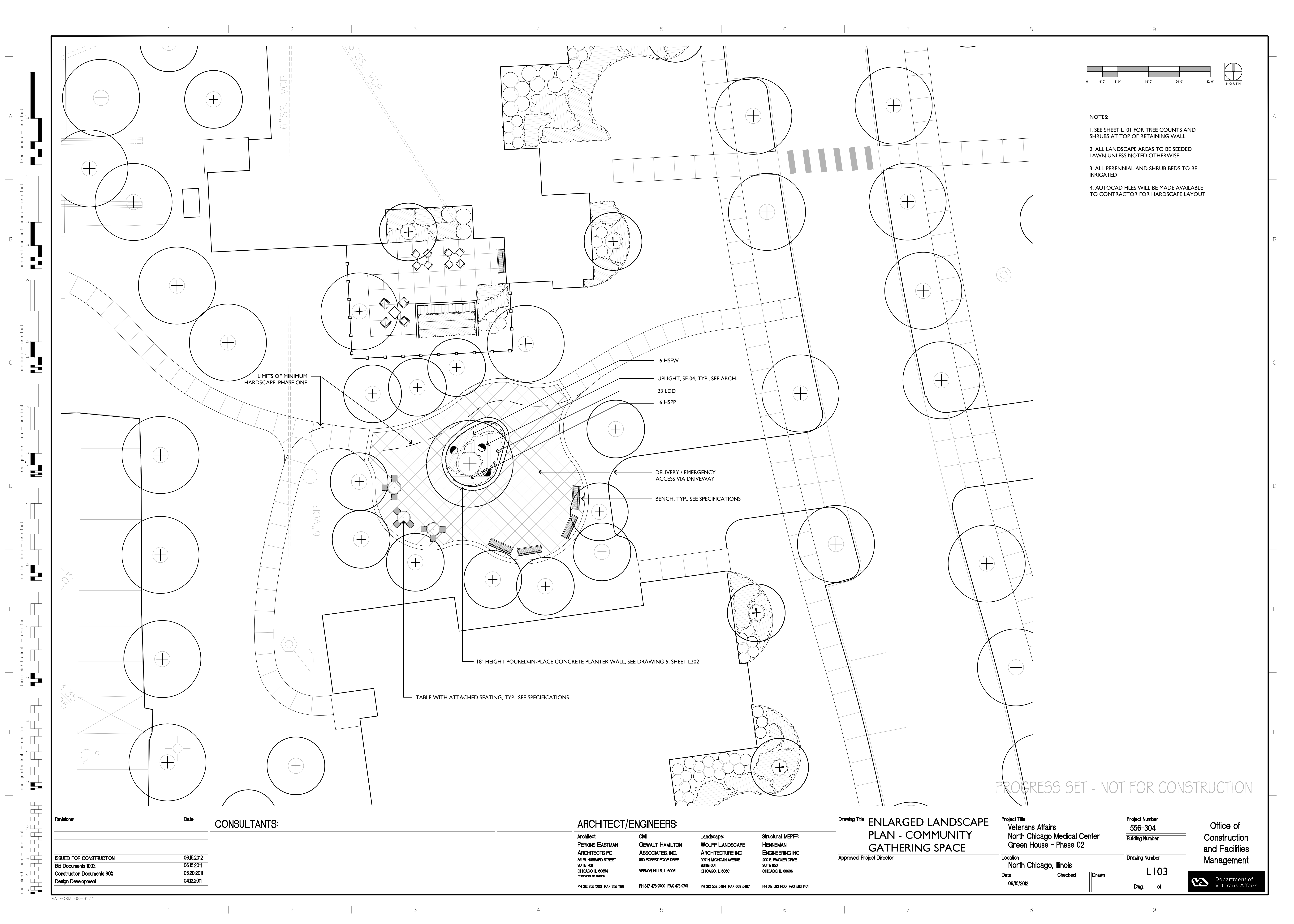
Drawing Number
L101
Dwg. of

Office of
Construction
and Facilities
Management





Revisions	Date	CONSULTANTS:		ARCHITECT/ENGINEERS:	<div>Architect: PERKINS EASTMAN ARCHITECTS PC 381 W. HARBARD STREET SUITE 708 CHICAGO, IL 60654 <small>PE PROJECT NO. 049830</small></div> <div>Civil: GEWALT HAMILTON ASSOCIATES, INC. 880 FOREST EDGE DRIVE SUITE 401 VERNON HILLS, IL 60061</div> <div>Landscape: WOLFF LANDSCAPE ARCHITECTURE INC 307 N MICHIGAN AVENUE SUITE 401 CHICAGO, IL 60601</div> <div>Structural, MEPFP: HENNEMAN ENGINEERING INC 202 S. WACKER DRIVE SUITE 850 CHICAGO, IL 60606</div>	Drawing Title ENLARGED LANDSCAPE PLAN - TYPICAL HOUSE LANDSCAPE	Project Title Veterans Affairs North Chicago Medical Center Green House - Phase 02	Project Number 556-304	Office of Construction and Facilities Management					
										Building Number				
ISSUED FOR CONSTRUCTION	06.15.2012									Location North Chicago, Illinois	Drawing Number L102			
Bid Documents 100%	06.15.2011											Date 06/15/2012	Checked	Drawn
Construction Documents 90%	05.20.2011													
Design Development	04.13.2011													
				PH 312 755 1200 FAX 755 1555	PH 847 478 9700 FAX 478 9701	PH 312 552 5464 FAX 663 5457	PH 312 583 1400 FAX 583 1401							



- NOTES:
1. SEE SHEET L101 FOR TREE COUNTS AND SHRUBS AT TOP OF RETAINING WALL
 2. ALL LANDSCAPE AREAS TO BE SEEDED LAWN UNLESS NOTED OTHERWISE
 3. ALL PERENNIAL AND SHRUB BEDS TO BE IRRIGATED
 4. AUTOCAD FILES WILL BE MADE AVAILABLE TO CONTRACTOR FOR HARDSCAPE LAYOUT

Revisions:	Date
ISSUED FOR CONSTRUCTION	06.15.2012
Bid Documents 100%	06.15.2011
Construction Documents 90%	05.20.2011
Design Development	04.13.2011

CONSULTANTS:

ARCHITECT/ENGINEERS:			
Architect: PERKINS EASTMAN ARCHITECTS PC 301 W. HARRISON STREET SUITE 708 CHICAGO, IL 60654 TEL PROJECT NO. 006020	Civil: GEWALT HAMILTON ASSOCIATES, INC. 850 FOREST EDGE DRIVE VERNON HILLS, IL 60061	Landscape: WOLFF LANDSCAPE ARCHITECTURE INC 307 N MICHIGAN AVENUE SUITE 601 CHICAGO, IL 60601	Structural, MEFPF: HENNEMAN ENGINEERING INC 200 S. WACKER DRIVE SUITE 850 CHICAGO, IL 60606
PH 312.755.1200 FAX 312.755.155	PH 847.478.9700 FAX 478.9701	PH 312.552.5404 FAX 683.5407	PH 312.583.1400 FAX 583.1401

Drawing Title ENLARGED LANDSCAPE PLAN - COMMUNITY GATHERING SPACE
Approved: Project Director

Project Title Veterans Affairs North Chicago Medical Center Green House - Phase 02
Location North Chicago, Illinois
Date 06/15/2012
Checked
Drawn

Project Number 556-304
Building Number
Drawing Number L103
Dwg. of

Office of Construction and Facilities Management
Department of Veterans Affairs

	CODE	BOTANICAL NAME	COMMON NAME	QTY	CAL	HT	SPRD	ROOT	REMARKS
TREES	AFAB	ACER X FREEMANII 'AUTUMN BLAZE'	AUTUMN BLAZE MAPLE	13	4"	-	-	B&B	SINGLE STRAIGHT TRUNK, SPECIMEN QUALITY
	AFAB-M	ACER X FREEMANII 'AUTUMN BLAZE'	AUTUMN BLAZE MAPLE	11	-	12'	-	B&B	MULTI-STEM TRUNK, SPECIMEN QUALITY
	AFAB-M16	ACER X FREEMANII 'AUTUMN BLAZE'	AUTUMN BLAZE MAPLE	1	-	16'	-	B&B	MULTI-STEM TRUNK, SPECIMEN QUALITY
	AGAB	AMELANCHIER X GRANDIFLORA 'AUTUMN BRILLIANCE'	AUTUMN BRILLIANCE APPLE SERVICEBERRY	16	-	8'	-	B&B	MULTI-STEM, 5 STEMS MINIMUM
	AMMO	ACER MIYABEI 'MORTON'	STATE STREET MAPLE	13	4"	-	-	B&B	SINGLE STRAIGHT TRUNK, SPECIMEN QUALITY
	BPJW	BETULA PLATYPHYLLA VAR. JAPONICA 'WHITESPIRE'	WHITESPIRE JAPANESE WHITE BIRCH	11	-	12'	-	B&B	MULTI-STEM, 7 STEMS MINIMUM OR SINGLE STRAIGHT TRUNK
	CVWK	CRATAEGUS VIRIDIS 'WINTER KING'	WINTER KING GREEN HAWTHORN	19	-	8'	-	B&B	MULTI-STEM, 5 STEMS MINIMUM
	GD	GYMNOCLADUS DIOICUS	KENTUCKY COFFEETREE	4	4"	-	-	B&B	SINGLE STRAIGHT TRUNK, SPECIMEN QUALITY
	PA	PICEA ABIES	NORWAY SPRUCE	20	-	8'	-	B&B	SINGLE STRAIGHT TRUNK, SPECIMEN QUALITY
	PN	PINUS NIGRA	AUSTRIAN PINE	17	-	8'	-	B&B	SINGLE STRAIGHT TRUNK, SPECIMEN QUALITY
	QRU	QUERCUS RUBRA	NORTHERN RED OAK	12	4"	-	-	B&B	SINGLE STRAIGHT TRUNK, SPECIMEN QUALITY
	SPBG	SYRINGA PEKINENSIS 'ZHANG ZHEMING'	BEIJING GOLD PEKING TREE LILAC	6	-	8'	-	B&B	MULTI-STEM, 5 STEMS MINIMUM (HINSDALE NURSERY)
	TAR	TILIA AMERICANA 'REDMOND'	REDMOND AMERICAN LINDEN	12	4"	-	-	B&B	SINGLE STRAIGHT TRUNK, SPECIMEN QUALITY
	TAR-M	TILIA AMERICANA 'REDMOND'	REDMOND AMERICAN LINDEN	16	-	12'	-	B&B	MULTI-STEM TRUNK, SPECIMEN QUALITY
	UCMG	ULMUS CARPINIFOLIA 'MORTON GLOSSY'	TRIUMPH ELM	17	4"	-	-	B&B	SINGLE STRAIGHT TRUNK, SPECIMEN QUALITY
SHRUBS	DS	DIERVILLA SESSIFOLIA	SOUTHERN BUSH-HONEYSUCKLE	86	-	24"	-	#5	3'-0" ON CENTER
	RRKO	ROSA X 'RED KNOCK OUT'	RED KNOCKOUT ROSE	60	-	-	24"	#3	4'-0" ON CENTER
	SBT	SPIRAEA BETULIFOLIA 'TOR'	BIRCHLEAF SPIREA	72	-	24"	-	#5	3'-0" ON CENTER
	SBGW	SPIREA BUMALDA 'ANTHONY WATERER'	ANTHONY WATERER SPIREA	42	-	-	24"	#5	3'-0" ON CENTER
	SBGF	SPIREA BUMALDA 'GOLDFLAME'	GOLDFLAME SPIREA	30	-	-	24"	#5	3'-0" ON CENTER
	SPMK	SYRINGA PATULA 'MISS KIM'	MISS KIM DWARF KOREAN LILAC	30	-	30"	-	B&B	4'-0" ON CENTER
	THW	TAXUS X MEDIA 'WARDII'	WARDS YEW	96	-	-	30"	B&B	3'-0" ON CENTER
	EPM	ECHINACEA PURPUREA 'MAGNUS'	MAGNUS PURPLE CONEFLOWER	258	-	-	-	#1	1'-6" ON CENTER
PERENNIALS, GRASSES, AND GROUNDCOVERS	EFC	EUONYMUS FORTUNEI 'COLORATUS'	PURPLELEAF WINTERCREEPER	912	-	-	-	QT	1'-0" ON CENTER
	HSFW	HOSTA SIEBOLDIANA 'FRANCES WILLIAMS'	FRANCES WILLIAMS SIEBOLDIANA HOSTA	358	-	-	-	#1	2'-0" ON CENTER
	HSPP	HEMEROCALLIS SPECIES	DAYLILY	598	-	-	-	#1	1'-6" ON CENTER
	LDD	LIGULARIA DENTATA 'DESDEMONA'	BIGLEAF LIGULARIA	23	-	-	-	#2	2'-0" ON CENTER
	NF	NEPETA X FAASSENII	CATMINT	810	-	-	-	#1	1'-6" ON CENTER
	PAH	PENNISETUM ALOPECUROIDES 'HAMELIN'	HAMELIN DWARF FOUNTAINGRASS	96	-	-	-	#1	1'-6" ON CENTER
	RFG	RUDBECKIA FULGIDA 'GOLDSTURM'	BLACK EYED SUSAN	792	-	-	-	#1	1'-0" ON CENTER
	SH	SPOROBOLUS HETEROLEPIS	PRAIRIE DROPSOED	96	-	-	-	#1	1'-6" ON CENTER

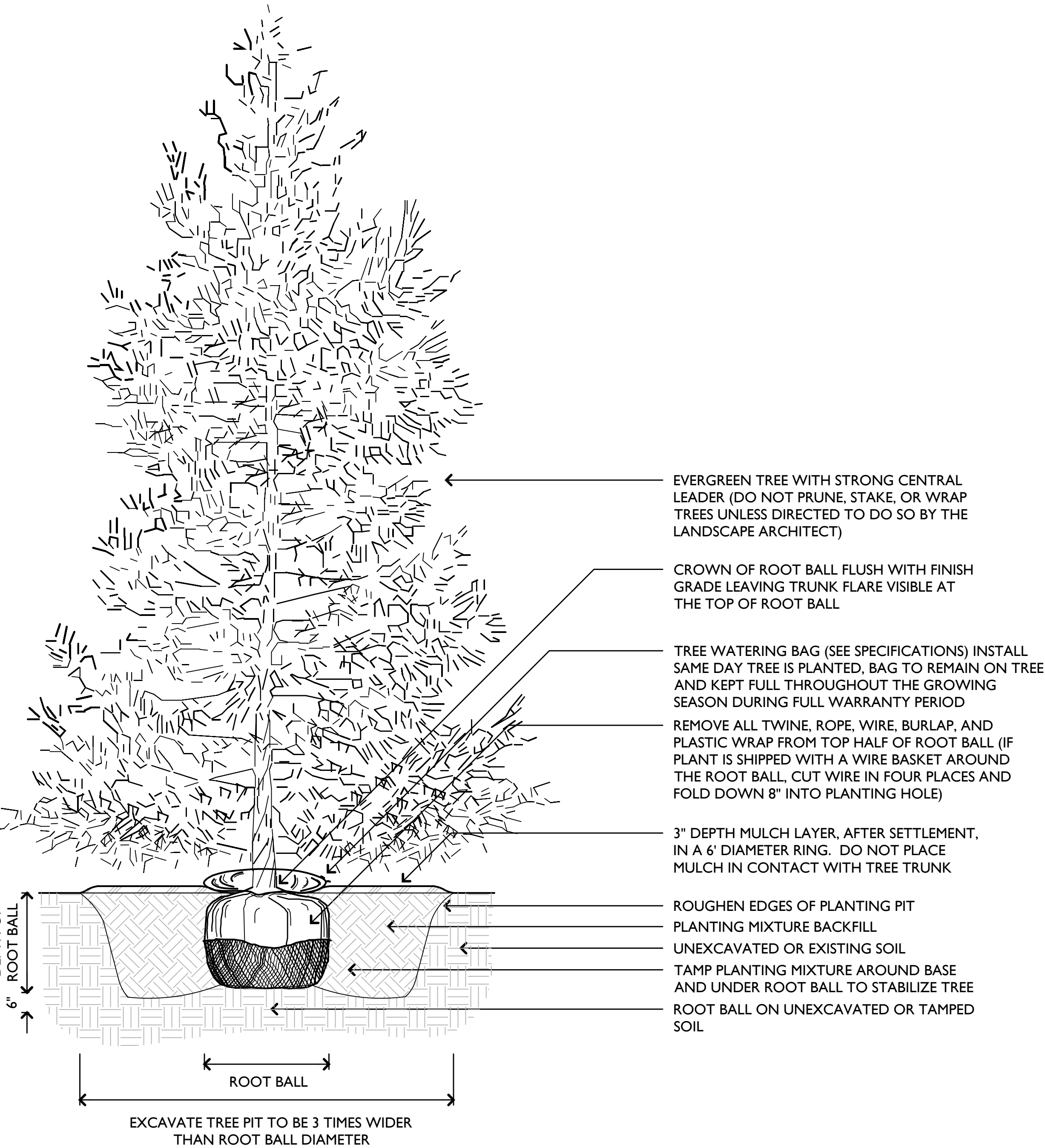
PLANT LIST

NOTE: QUANTITIES ON THE PLANT LIST ARE PROVIDED FOR INFORMATION ONLY. PLANT QUANTITIES UNDER THE CONTRACT ARE INDICATED ON THE PLANS. IN THE EVENT OF ANY DISCREPANCIES, THE CONTRACT SHALL BE BASED ON THE QUANTITIES SHOWN ON THE PLANS.

LANDSCAPE AREAS	DEPTH IN INCHES
LAWN AREAS (SOD)	6 TOPSOIL
LAWN AREAS (SEED)	6 TOPSOIL
PLANTING BEDS - GRASSES, PERENNIALS AND GROUNDCOVER	12 PLANTING MIX
PLANTING BEDS - MEDIUM AND SMALL SHRUBS	18 PLANTING MIX
RAISED PLANTERS	24 PLANTING MIX
SHADE AND ORNAMENTAL TREES	PER TREE INSTALLATION DETAIL

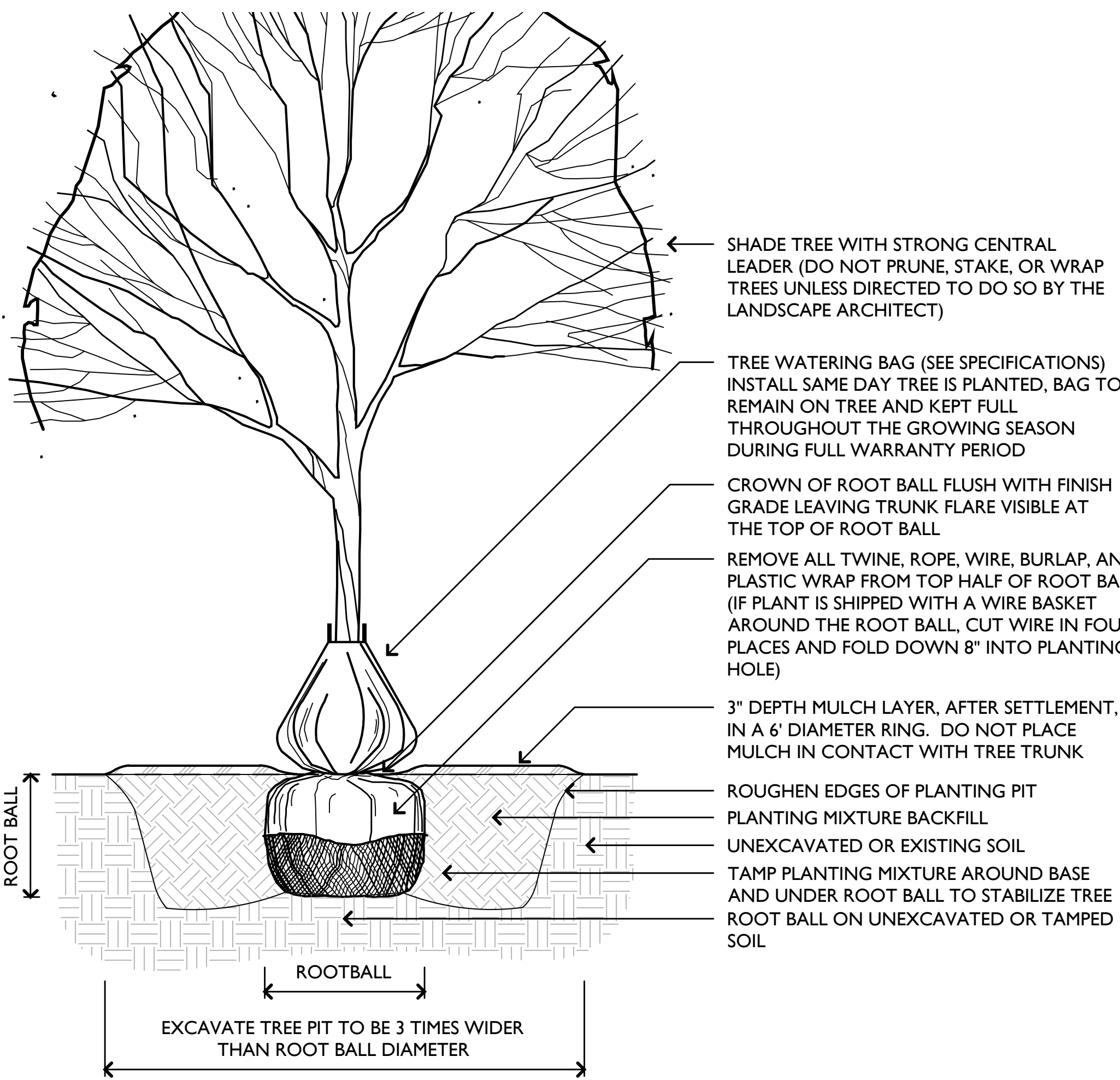
2 SOIL DEPTH CHART

NOTE: THE CONTRACTOR IS TO SUPPLY SOIL FILL MATERIAL TO THE DEPTHS INDICATED ON THE CHART ABOVE



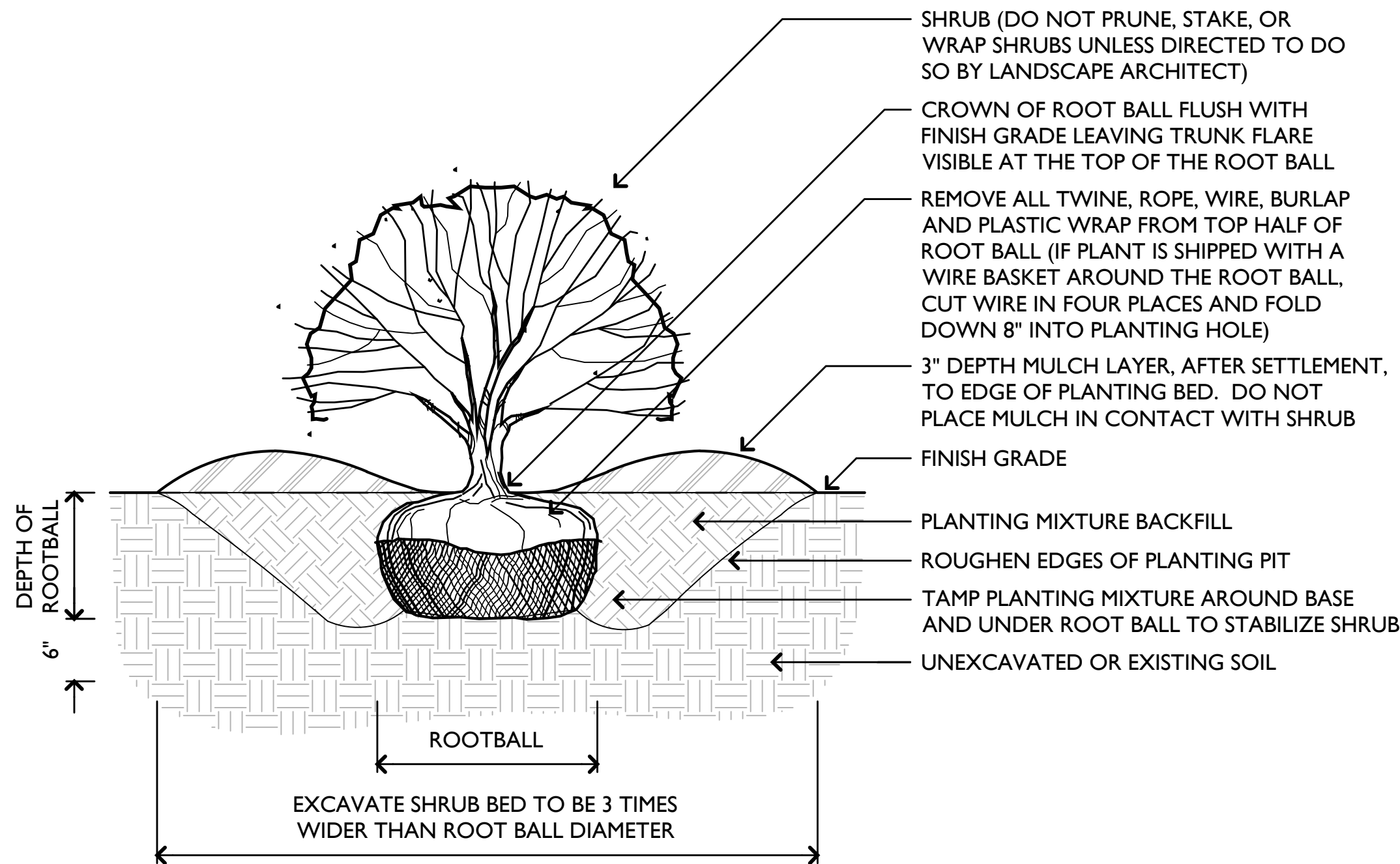
3 EVERGREEN TREE PLANTING DETAIL

SCALE: 1/2"=1'-0"



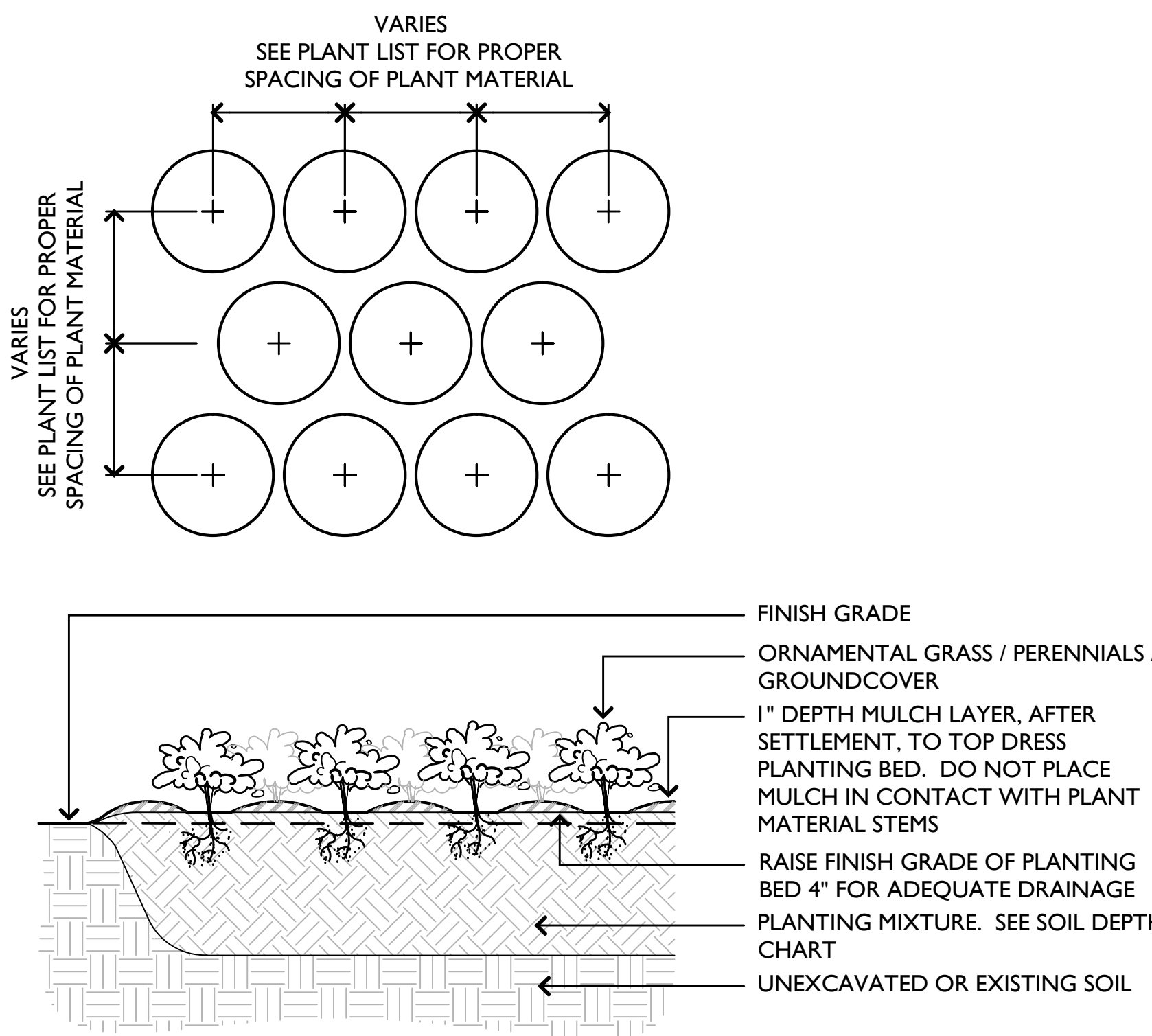
4 DECIDUOUS TREE PLANTING DETAIL

SCALE: 1/2"=1'-0"



5 SHRUB PLANTING DETAIL

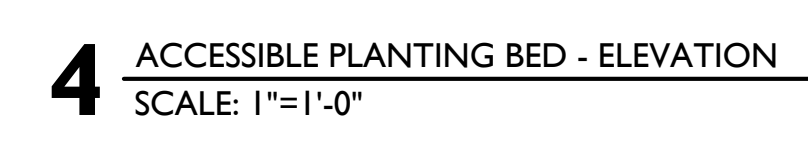
SCALE: 1"=1'-0"



6 PERENNIAL PLANTING DETAIL

SCALE: 1"=1'-0"

<p>Revisions:</p> <table><tr><td>ISSUED FOR CONSTRUCTION</td><td>06.15.2012</td></tr><tr><td>Bid Documents 100%</td><td>06.15.2011</td></tr><tr><td>Construction Documents 90%</td><td>05.20.2011</td></tr><tr><td>Design Development</td><td>04.13.2011</td></tr></table>	ISSUED FOR CONSTRUCTION	06.15.2012	Bid Documents 100%	06.15.2011	Construction Documents 90%	05.20.2011	Design Development	04.13.2011	<p>Date</p> <table><tr><td>06.15.2012</td></tr><tr><td>06.15.2011</td></tr><tr><td>05.20.2011</td></tr><tr><td>04.13.2011</td></tr></table>	06.15.2012	06.15.2011	05.20.2011	04.13.2011	<p>CONSULTANTS:</p>	<p>ARCHITECT/ENGINEERS:</p> <table><tr><td>Architect: PERKINS EASTMAN ARCHITECTS PC 301 W. HARBARD STREET SUITE 708 CHICAGO, IL 60654 PE PROJECT NO. 080654 PH 312.755.1200 FAX 755.185</td><td>Civil: GEWALT HAMILTON ASSOCIATES, INC. 850 FOREST EDGE DRIVE VERNON HILLS, IL 60061 PH 847.478.9700 FAX 478.9701</td><td>Landscape: WOLFF LANDSCAPE ARCHITECTURE INC 307 N. MICHIGAN AVENUE SUITE 601 CHICAGO, IL 60601 PH 312.552.5404 FAX 683.5407</td><td>Structural, MEPFP: HENNEMAN ENGINEERING INC 200 S. WACKER DRIVE SUITE 850 CHICAGO, IL 60606 PH 312.583.1400 FAX 583.1401</td></tr></table>	Architect: PERKINS EASTMAN ARCHITECTS PC 301 W. HARBARD STREET SUITE 708 CHICAGO, IL 60654 PE PROJECT NO. 080654 PH 312.755.1200 FAX 755.185	Civil: GEWALT HAMILTON ASSOCIATES, INC. 850 FOREST EDGE DRIVE VERNON HILLS, IL 60061 PH 847.478.9700 FAX 478.9701	Landscape: WOLFF LANDSCAPE ARCHITECTURE INC 307 N. MICHIGAN AVENUE SUITE 601 CHICAGO, IL 60601 PH 312.552.5404 FAX 683.5407	Structural, MEPFP: HENNEMAN ENGINEERING INC 200 S. WACKER DRIVE SUITE 850 CHICAGO, IL 60606 PH 312.583.1400 FAX 583.1401	<p>Drawing Title</p> <p>PLANT LIST AND DETAILS</p> <p>Approved: Project Director</p>	<p>Project Title</p> <p>Veterans Affairs North Chicago Medical Center Green House - Phase 02</p> <p>Location</p> <p>North Chicago, Illinois</p> <p>Date</p> <p>06/15/2012</p> <p>Checked</p> <p>Drawn</p>	<p>Project Number</p> <p>556-304</p> <p>Building Number</p> <p>Drawing Number</p> <p>L201</p> <p>Dwg. of</p>	<p>Office of Construction and Facilities Management</p> <p>Department of Veterans Affairs</p>
ISSUED FOR CONSTRUCTION	06.15.2012																						
Bid Documents 100%	06.15.2011																						
Construction Documents 90%	05.20.2011																						
Design Development	04.13.2011																						
06.15.2012																							
06.15.2011																							
05.20.2011																							
04.13.2011																							
Architect: PERKINS EASTMAN ARCHITECTS PC 301 W. HARBARD STREET SUITE 708 CHICAGO, IL 60654 PE PROJECT NO. 080654 PH 312.755.1200 FAX 755.185	Civil: GEWALT HAMILTON ASSOCIATES, INC. 850 FOREST EDGE DRIVE VERNON HILLS, IL 60061 PH 847.478.9700 FAX 478.9701	Landscape: WOLFF LANDSCAPE ARCHITECTURE INC 307 N. MICHIGAN AVENUE SUITE 601 CHICAGO, IL 60601 PH 312.552.5404 FAX 683.5407	Structural, MEPFP: HENNEMAN ENGINEERING INC 200 S. WACKER DRIVE SUITE 850 CHICAGO, IL 60606 PH 312.583.1400 FAX 583.1401																				



VA FORM 08-6231

 Department of
Veterans Affairs