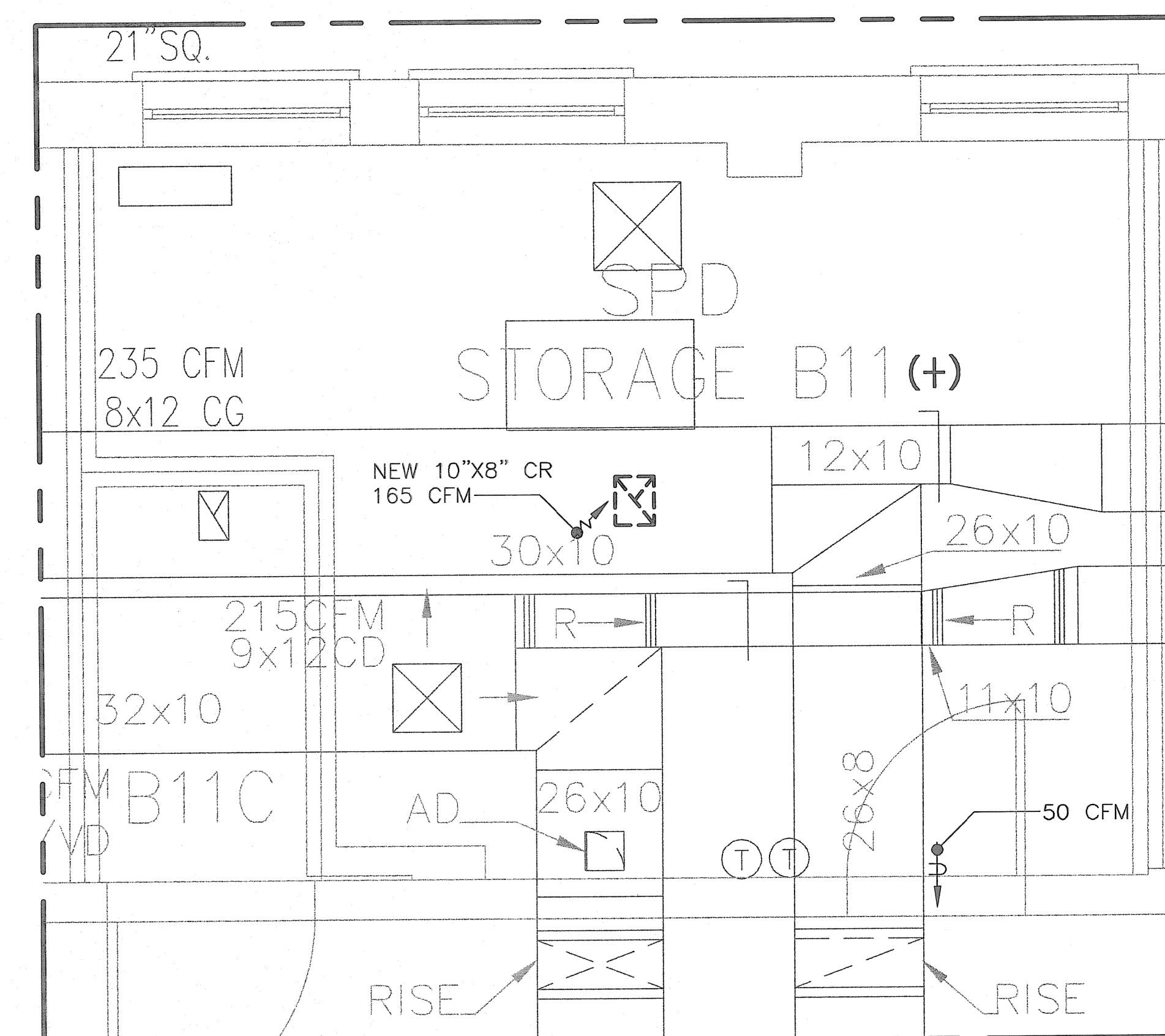
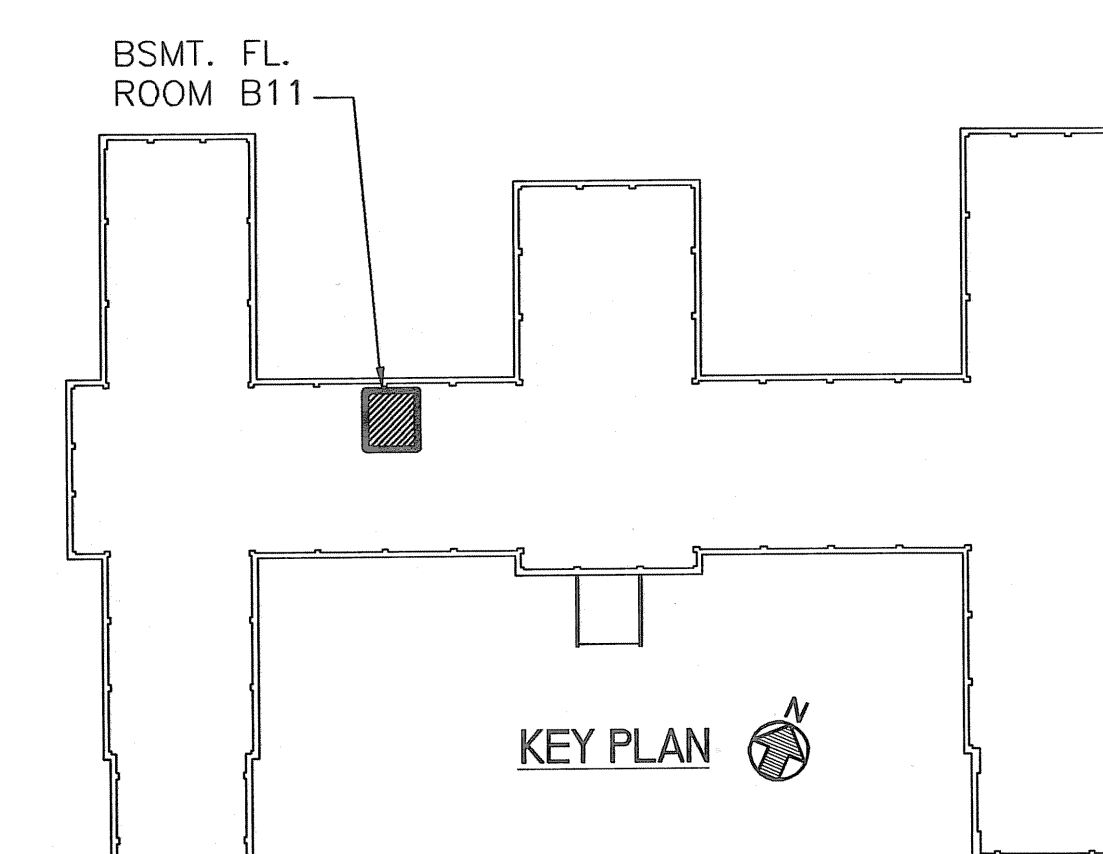


**PART AS-BUILT - BASEMENT FLOOR PLAN**  
SCALE: 1/8"=1'-0"



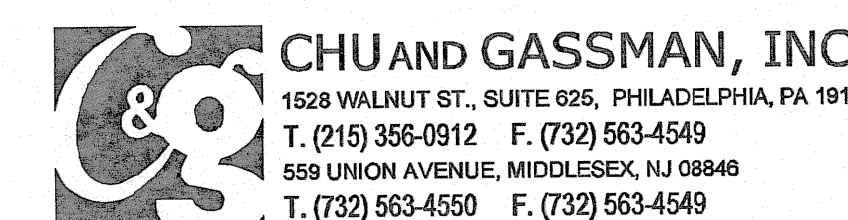
**1 NEW WORK - ROOM B11 ENLARGED PLAN - 1**  
SCALE: 1/2"=1'-0"



**KEY PLAN**

**FINAL CONSTRUCTION DOCUMENTS**

Revisions	Date	A/E SEAL	A/E ADDRESS	Drawing Title		Project Title		Date
				MECHANICAL NEW WORK PART BASEMENT FLOOR PLAN		VAMC ENVIRONMENTAL CONTROLS		2/15/2012
				Approved: Chief Engineering Service Michael Carcanague	Drawn T. CHU	Building Number 02	Project No. 542-08-114	DRAWING No. 02MH101
				Approved: Medical Center Director Gary W. Devansky	Checked D. GABRIEL	Location COATESVILLE, PENNSYLVANIA	Dwg. 6 of 17	



**CHU and GASSMAN, INC**  
1528 WALNUT ST., SUITE 625, PHILADELPHIA, PA 19102  
T. (215) 355-0912 F. (732) 563-4549  
554 UNION AVENUE, MIDDLESEX, NJ 08846  
T. (732) 563-4550 F. (732) 563-4549

**VA**