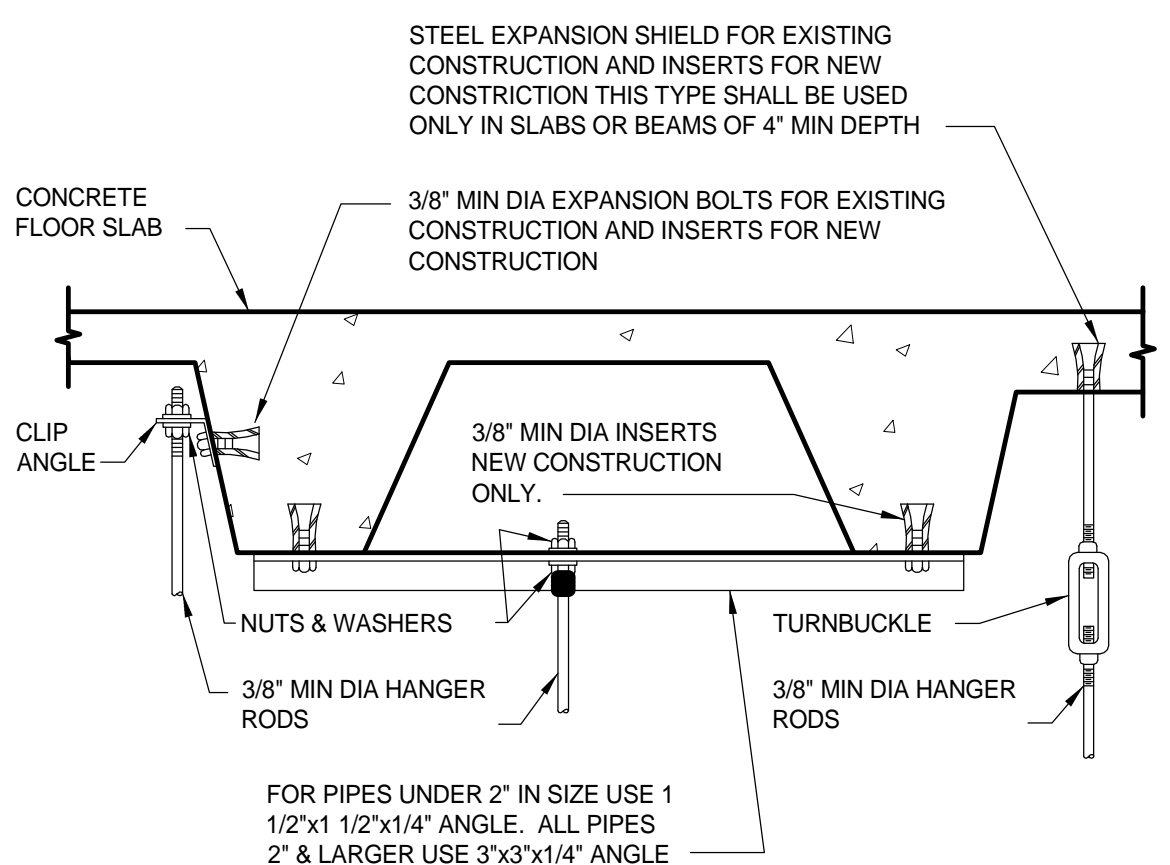
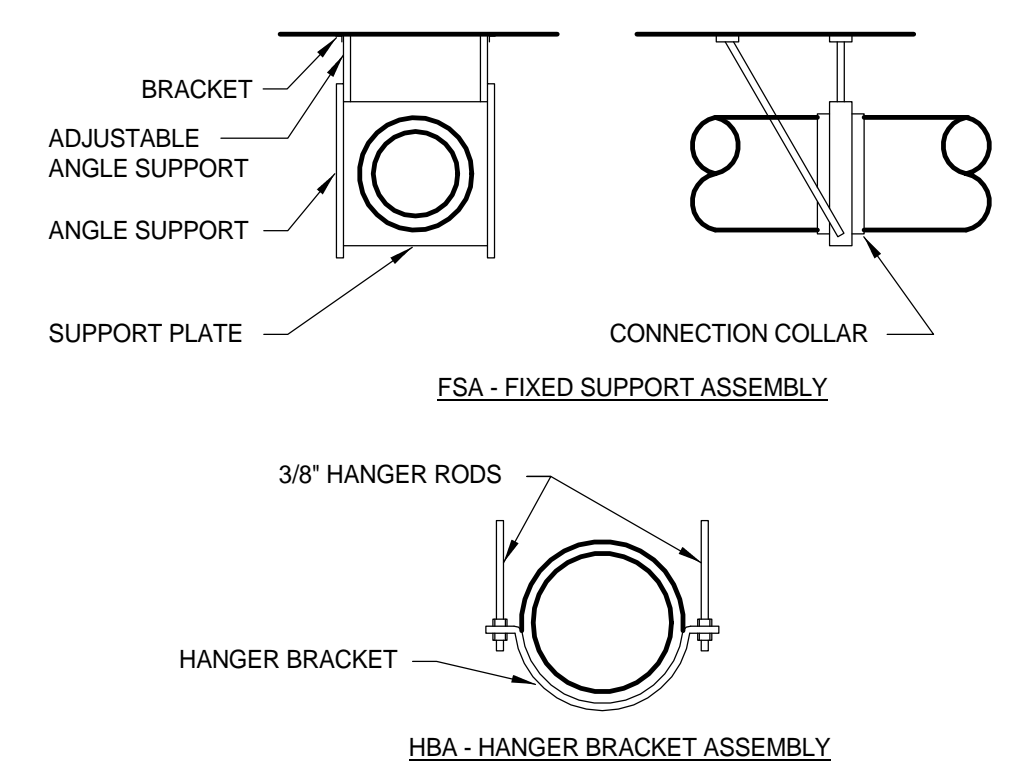




three inches = one foot  
one and one half inches = one foot  
one inch = one foot  
one inch = one foot  
three quarters inch = one foot  
one half inch = one foot  
three eighths inch = one foot  
one eighth inch = one foot  
one quarter inch = one foot  
one eighth inch = one foot



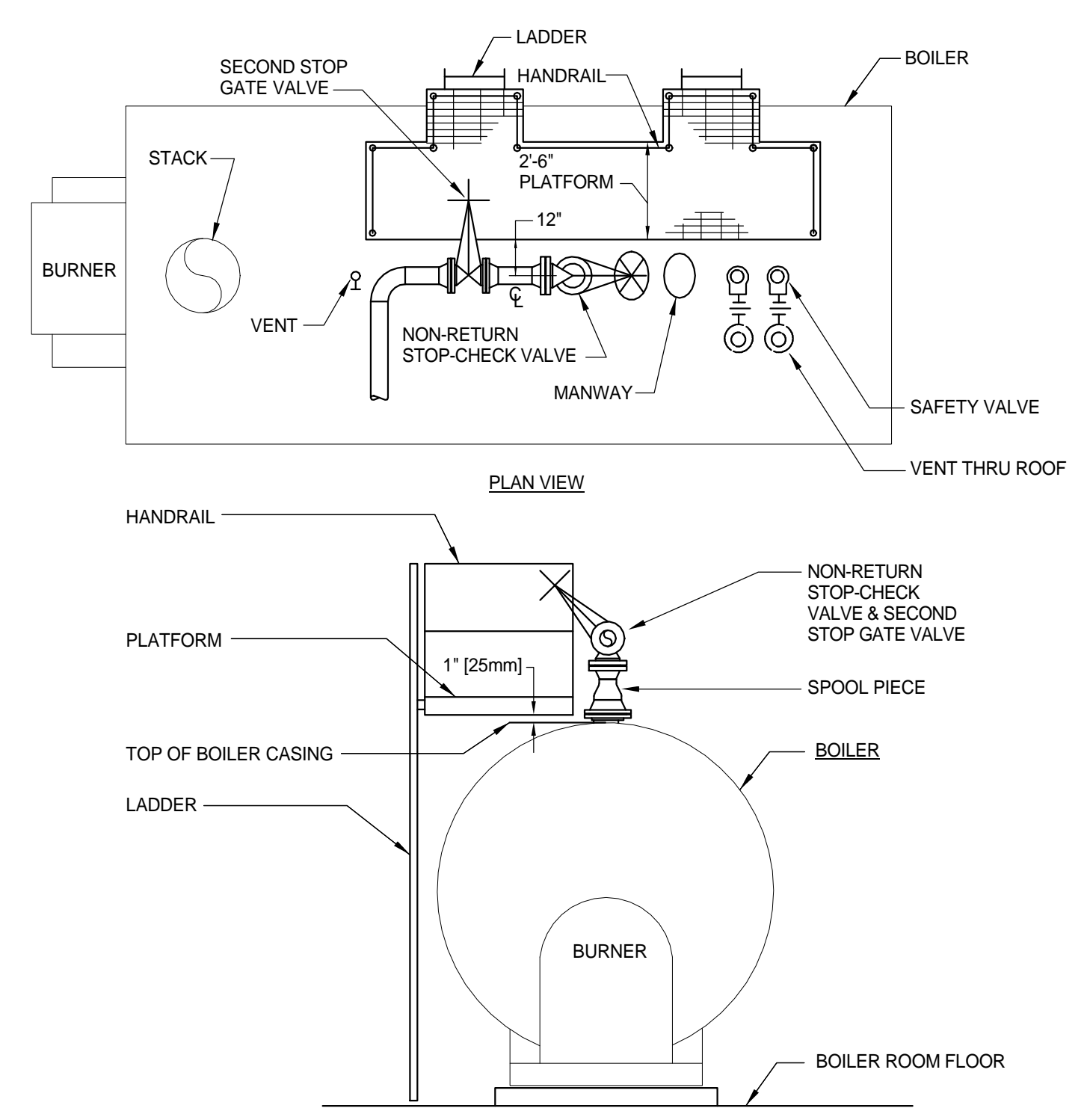
1 SECURING HANGER RODS IN CONCRETE  
SCALE: NONE



2 PIPE/DUCT SUPPORT TO BUILDING EXTERIOR WALL  
SCALE: NONE

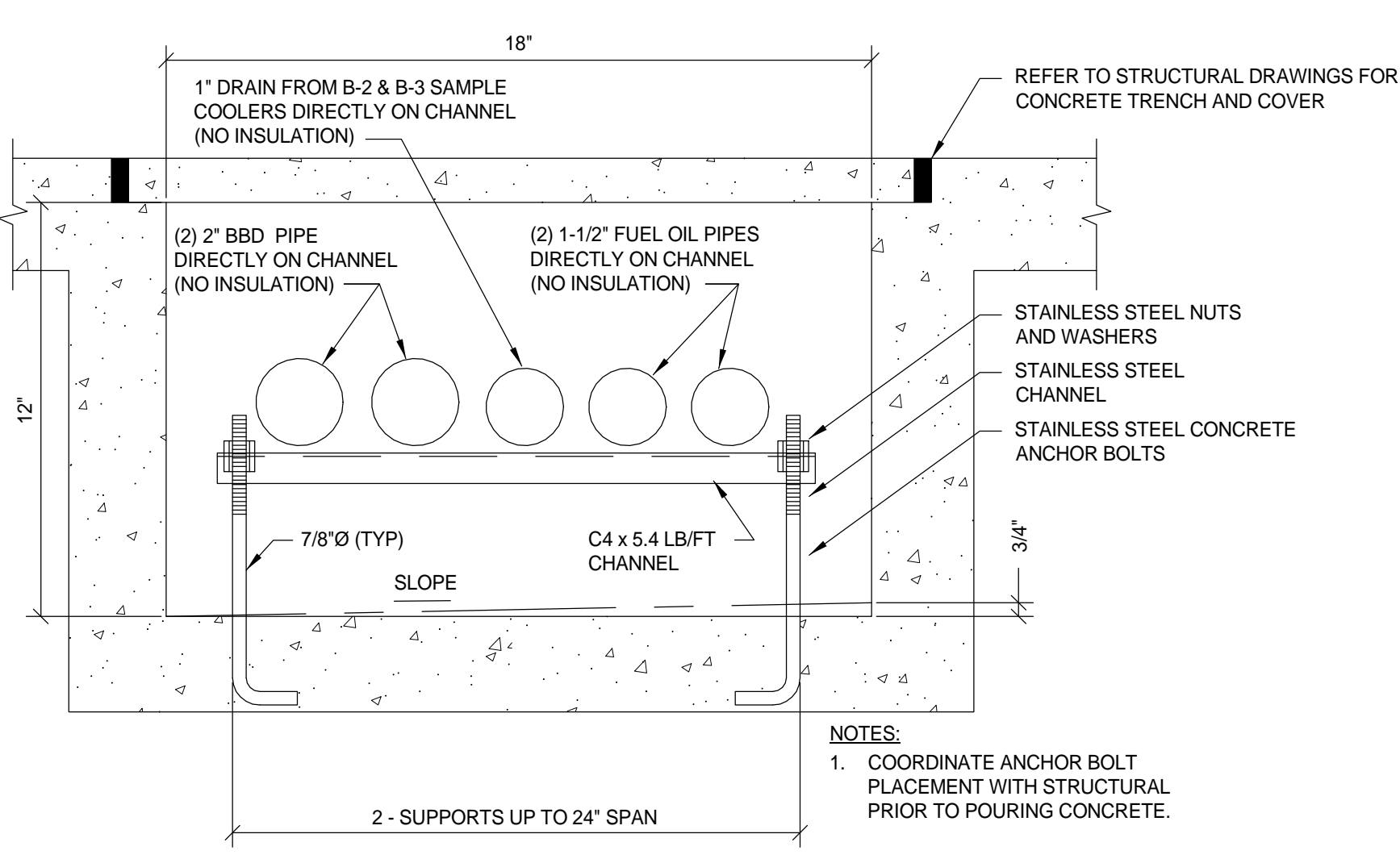
NOTES:  
(1) REFER TO BOILER BREECHING MANUFACTURER FOR INSTALLATION INSTRUCTIONS.

3 BOILER BREECHING HANGERS  
SCALE: NONE



NOTE:  
1. SUPPORT PLATFORM FROM FLOOR OR FROM BOILER IF BOILER MANUFACTURER PROVIDES BOILER ATTACHMENTS AND APPROVES INSTALLATION.  
2. COORDINATE LOCATION OF PLATFORM, HANDRAILS AND LADDERS WITH EXISTING ELECTRICAL CONDUIT.

6 FIRETUBE ACCESS PLATFORM ARRANGEMENT  
SCALE: NONE



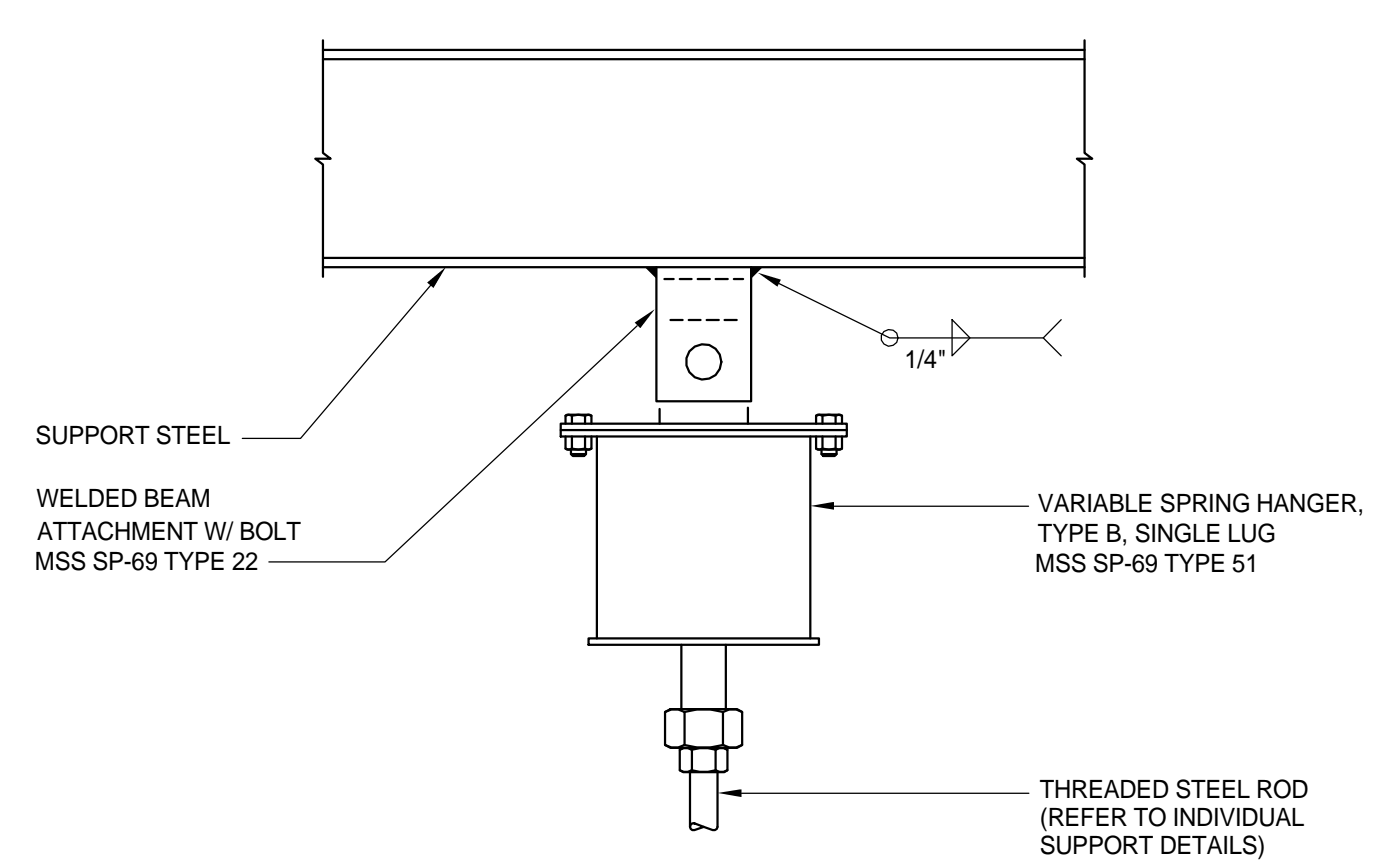
8 VARIABLE SPRING HANGER  
SCALE: NONE

MAXIMUM PIPE/TUBING SUPPORT SPACING																		
NOM. PIPE SIZE	THRU 3/4"	1"	1 1/4"	1 1/2"	2"	2 1/2"	3"	4"	5"	6"	8"	10"	12"	14"	16"	18"	20"	24"
STEEL PIPE	7'-0"	7'-0"	7'-0"	9'-0"	10'-0"	11'-0"	12'-0"	14'-0"	16'-0"	17'-0"	19'-0"	22'-0"	23'-0"	25'-0"	27'-0"	28'-0"	30'-0"	32'-0"
COPPER TUBING	5'-0"	6'-0"	7'-0"	8'-0"	8'-0"	9'-0"	10'-0"	12'-0"	13'-0"	14'-0"	16'-0"	-	-	-	-	-	-	-

NOTE: FOR TRAPEZE HANGER TAKE SPACING OF SMALLEST SIZE ON TRAPEZE.

SUPPORTS SCHEDULE						
TAG	TYPE	SYSTEM	SIZE (INCHES)	LOAD (LBS)	VERTICAL MOVEMENT (INCHES)	NOTES
SH	VARIABLE SPRING HANGER	4" HPS - HEADER TO PRV	14	1,100	0.40	-
SH	VARIABLE SPRING HANGER	6" HPS - BOILER #1, #2, #3	16	1,400	0.40	-
SH	VARIABLE SPRING HANGER	6" HPS - BOILER #1, #2, #3	20	1,400	0.40	-
SH	VARIABLE SPRING HANGER	8" HPS - TEMP BOILERS	18	3,000	0.40	-
RH	ROLLER HANGER	3" PC	6	500	N/A	-

5 PIPE HANGERS  
SCALE: NONE



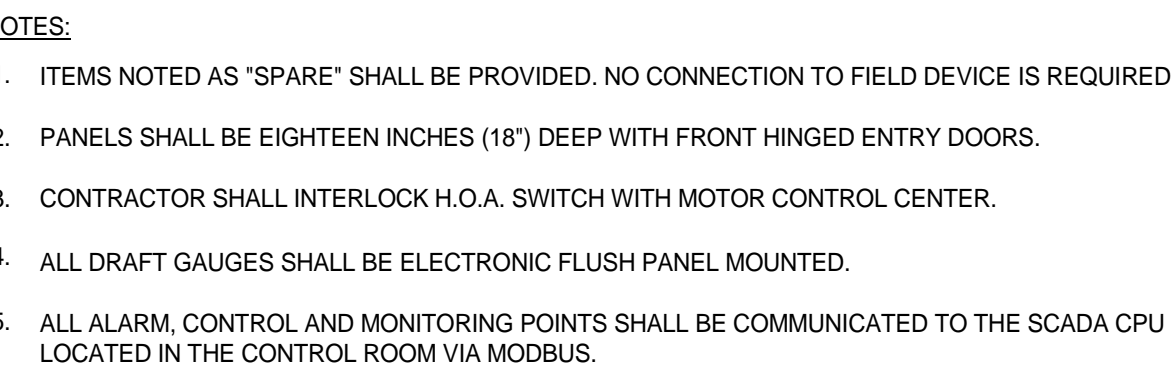
7 PIPE TRENCH IN BUILDING  
SCALE: NONE

100% DESIGN  
APPROVED FOR CONSTRUCTION

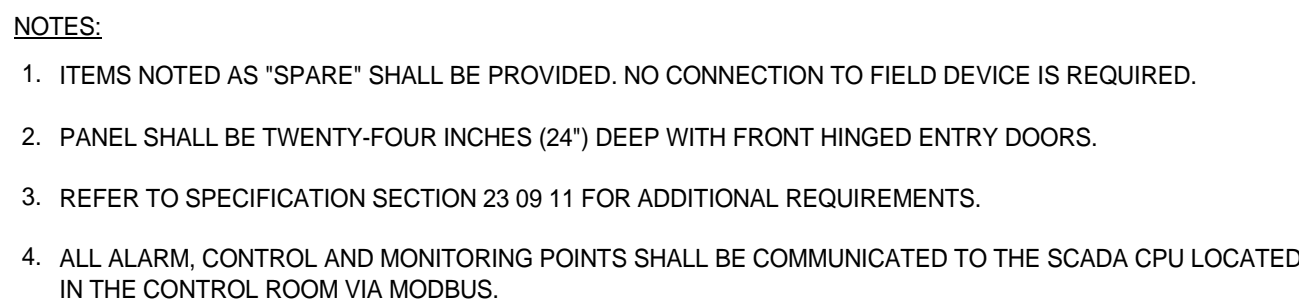
Revisions:		Date	CONSULTANTS:		ENGINEER-OF-RECORD JACK S. NEALE	FL. P.E. NO. 42878	ARCHITECT/ENGINEERS:		Drawing Title MECHANICAL DETAILS	Project Title DESIGN TO REPLACE BOILERS, BLDG 100 ENERGY CENTER	Project Number 516-15-107 Building Number 100	Office of Construction and Facilities Management  Department of Veterans Affairs
AEI Affiliated Engineers			Akea Design, Inc.		3603 NW 98th Street, Suite B Gainesville, FL 32606 Phone: (352) 474-6124 Fax: (352) 533-4437 COA: FL #29578 Akea Project No. 128-16	Approved: Project Director		Location BAY PINES, FLORIDA	Location BAY PINES, FLORIDA	Drawing Number MP501		
							Date MAY 15, 2017	Checked JSN	Drawn RWD	40 OF 78		



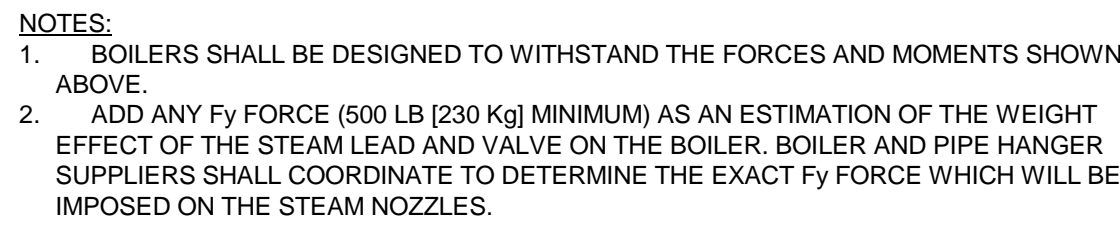




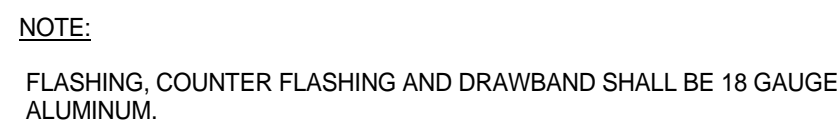
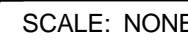
SCALE: NONE



SCALE: NONE



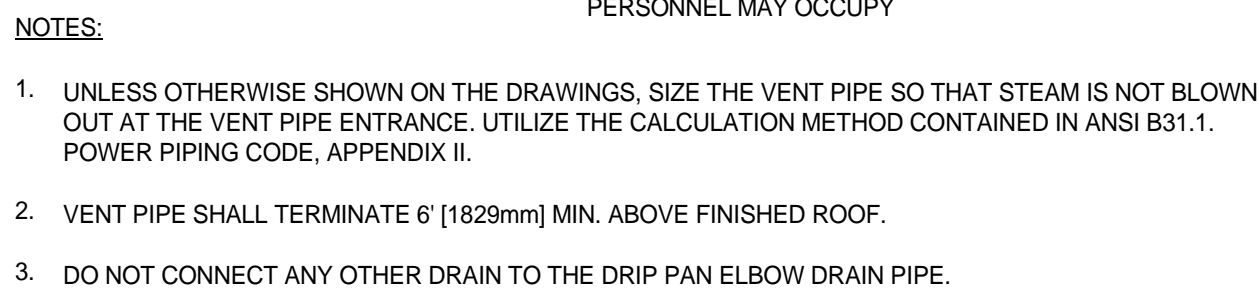
**FORCES**  
SCALE: NONE



SCALE: NONE



SCALE: NON



SCALE: NON

3



100% DESIGN  
APPROVED FOR CONSTRUCTION