

AIR FILTER SCHEDULE table with columns: FILTER MARK, SYSTEM, AIR FLOW, LOCATION, TYPE, SIZE, etc. Includes notes on filter specifications and replacement.

FAN SCHEDULE table with columns: FAN MARK, LOCATION, TYPE, PHASE, VOLTAGE, etc. Includes notes on fan specifications and operational requirements.

CHILLED WATER COOLING COIL SCHEDULE table with columns: COIL SYSTEM, AIR FLOW, COIL TYPE, LOCATION, etc. Includes notes on coil specifications and capacity.

AIR HANDLING UNIT SCHEDULE table with columns: MARK, LOCATION, AIR FLOW, SUPPLY AIR, RETURN AIR, etc. Includes notes on unit specifications and manufacturer details.

CONSULTANTS table listing project partners and their roles.

ARCHITECT/ENGINEERS table listing the lead firm and contact information.

SCHEDULES - HVAC table listing various HVAC components and their specifications.

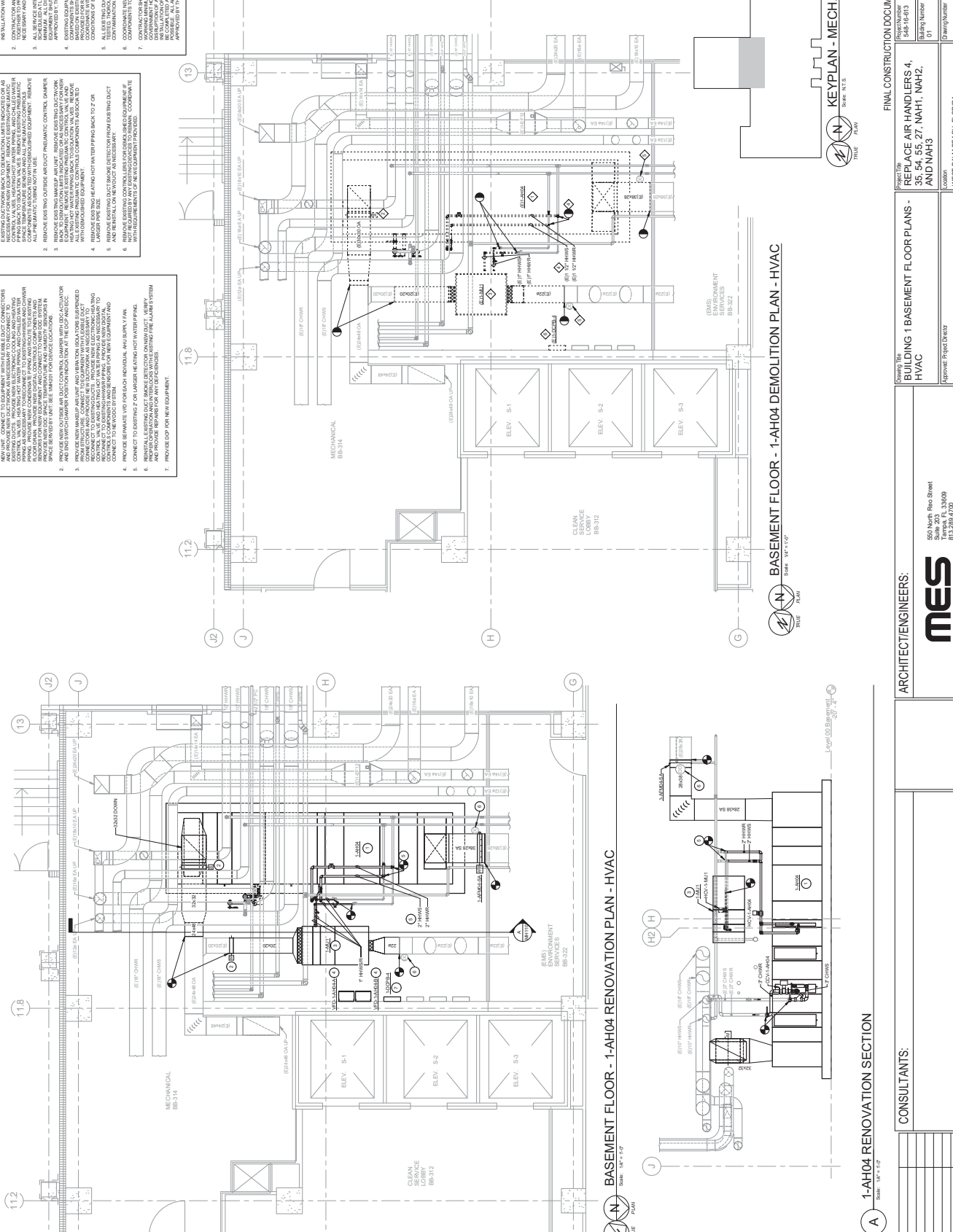
HOT WATER HEATING COIL SCHEDULE table listing heating coil specifications and capacity.

Office of Construction and Facilities Management, Project Number 01.00, Drawing Number MH002, Date 02/24/2017.

550 North Reed Street, Suite 203, St. Louis, MO 63103, 813.289.4700, COA # 8004.

REPLACE AIR HANDLERS 4, 35, 54, 55, 27, NAH1, NAH2, AND NAH3. APPROVED PROJECT LEADER: DALE A. BACK, P.E.

Department of Transportation, Missouri State Office Building, 222 West Palm Beach, Florida, 33411.

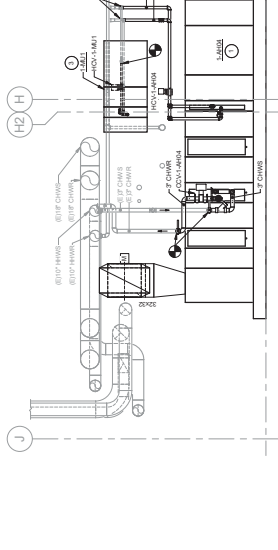


- ### RENOVATION KEYNOTES
- PROVIDE NEW AIR HANDLING AND VENTILATION MEANS FOR ALL EXISTING MECHANICAL ROOMS. PROVIDE NEW EXHAUST SYSTEMS FOR ALL EXISTING MECHANICAL ROOMS. PROVIDE NEW EXHAUST SYSTEMS FOR ALL EXISTING MECHANICAL ROOMS. PROVIDE NEW EXHAUST SYSTEMS FOR ALL EXISTING MECHANICAL ROOMS.
 - REMOVE EXISTING MECHANICAL EQUIPMENT AND ASSOCIATED DUCTWORK. REMOVE EXISTING MECHANICAL EQUIPMENT AND ASSOCIATED DUCTWORK. REMOVE EXISTING MECHANICAL EQUIPMENT AND ASSOCIATED DUCTWORK.
 - REMOVE EXISTING MECHANICAL EQUIPMENT AND ASSOCIATED DUCTWORK. REMOVE EXISTING MECHANICAL EQUIPMENT AND ASSOCIATED DUCTWORK. REMOVE EXISTING MECHANICAL EQUIPMENT AND ASSOCIATED DUCTWORK.
 - REMOVE EXISTING MECHANICAL EQUIPMENT AND ASSOCIATED DUCTWORK. REMOVE EXISTING MECHANICAL EQUIPMENT AND ASSOCIATED DUCTWORK. REMOVE EXISTING MECHANICAL EQUIPMENT AND ASSOCIATED DUCTWORK.
 - REMOVE EXISTING MECHANICAL EQUIPMENT AND ASSOCIATED DUCTWORK. REMOVE EXISTING MECHANICAL EQUIPMENT AND ASSOCIATED DUCTWORK. REMOVE EXISTING MECHANICAL EQUIPMENT AND ASSOCIATED DUCTWORK.
 - REMOVE EXISTING MECHANICAL EQUIPMENT AND ASSOCIATED DUCTWORK. REMOVE EXISTING MECHANICAL EQUIPMENT AND ASSOCIATED DUCTWORK. REMOVE EXISTING MECHANICAL EQUIPMENT AND ASSOCIATED DUCTWORK.
 - REMOVE EXISTING MECHANICAL EQUIPMENT AND ASSOCIATED DUCTWORK. REMOVE EXISTING MECHANICAL EQUIPMENT AND ASSOCIATED DUCTWORK. REMOVE EXISTING MECHANICAL EQUIPMENT AND ASSOCIATED DUCTWORK.

- ### DEMOLITION KEYNOTES
- REMOVE EXISTING MECHANICAL EQUIPMENT AND ASSOCIATED DUCTWORK. REMOVE EXISTING MECHANICAL EQUIPMENT AND ASSOCIATED DUCTWORK. REMOVE EXISTING MECHANICAL EQUIPMENT AND ASSOCIATED DUCTWORK.
 - REMOVE EXISTING MECHANICAL EQUIPMENT AND ASSOCIATED DUCTWORK. REMOVE EXISTING MECHANICAL EQUIPMENT AND ASSOCIATED DUCTWORK. REMOVE EXISTING MECHANICAL EQUIPMENT AND ASSOCIATED DUCTWORK.
 - REMOVE EXISTING MECHANICAL EQUIPMENT AND ASSOCIATED DUCTWORK. REMOVE EXISTING MECHANICAL EQUIPMENT AND ASSOCIATED DUCTWORK. REMOVE EXISTING MECHANICAL EQUIPMENT AND ASSOCIATED DUCTWORK.
 - REMOVE EXISTING MECHANICAL EQUIPMENT AND ASSOCIATED DUCTWORK. REMOVE EXISTING MECHANICAL EQUIPMENT AND ASSOCIATED DUCTWORK. REMOVE EXISTING MECHANICAL EQUIPMENT AND ASSOCIATED DUCTWORK.
 - REMOVE EXISTING MECHANICAL EQUIPMENT AND ASSOCIATED DUCTWORK. REMOVE EXISTING MECHANICAL EQUIPMENT AND ASSOCIATED DUCTWORK. REMOVE EXISTING MECHANICAL EQUIPMENT AND ASSOCIATED DUCTWORK.
 - REMOVE EXISTING MECHANICAL EQUIPMENT AND ASSOCIATED DUCTWORK. REMOVE EXISTING MECHANICAL EQUIPMENT AND ASSOCIATED DUCTWORK. REMOVE EXISTING MECHANICAL EQUIPMENT AND ASSOCIATED DUCTWORK.
 - REMOVE EXISTING MECHANICAL EQUIPMENT AND ASSOCIATED DUCTWORK. REMOVE EXISTING MECHANICAL EQUIPMENT AND ASSOCIATED DUCTWORK. REMOVE EXISTING MECHANICAL EQUIPMENT AND ASSOCIATED DUCTWORK.

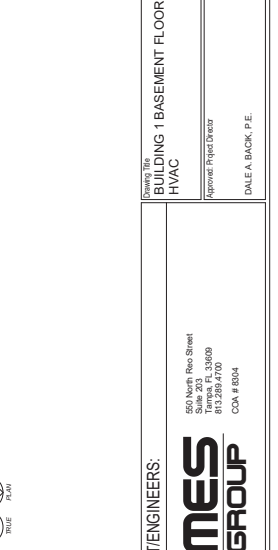
- ### GENERAL NOTES
- CONTRACTOR IS RESPONSIBLE FOR OBTAINING ALL NECESSARY PERMITS AND INSTALLATION WITH FIELD CONDITIONS.
 - CONTRACTOR SHALL VERIFY ALL FIELD CONDITIONS PRIOR TO COMMENCEMENT OF WORK.
 - CONTRACTOR SHALL VERIFY ALL FIELD CONDITIONS PRIOR TO COMMENCEMENT OF WORK.
 - CONTRACTOR SHALL VERIFY ALL FIELD CONDITIONS PRIOR TO COMMENCEMENT OF WORK.
 - CONTRACTOR SHALL VERIFY ALL FIELD CONDITIONS PRIOR TO COMMENCEMENT OF WORK.
 - CONTRACTOR SHALL VERIFY ALL FIELD CONDITIONS PRIOR TO COMMENCEMENT OF WORK.
 - CONTRACTOR SHALL VERIFY ALL FIELD CONDITIONS PRIOR TO COMMENCEMENT OF WORK.

BASEMENT FLOOR - 1-AH04 RENOVATION PLAN - HVAC
Scale: 1/8" = 1'-0"

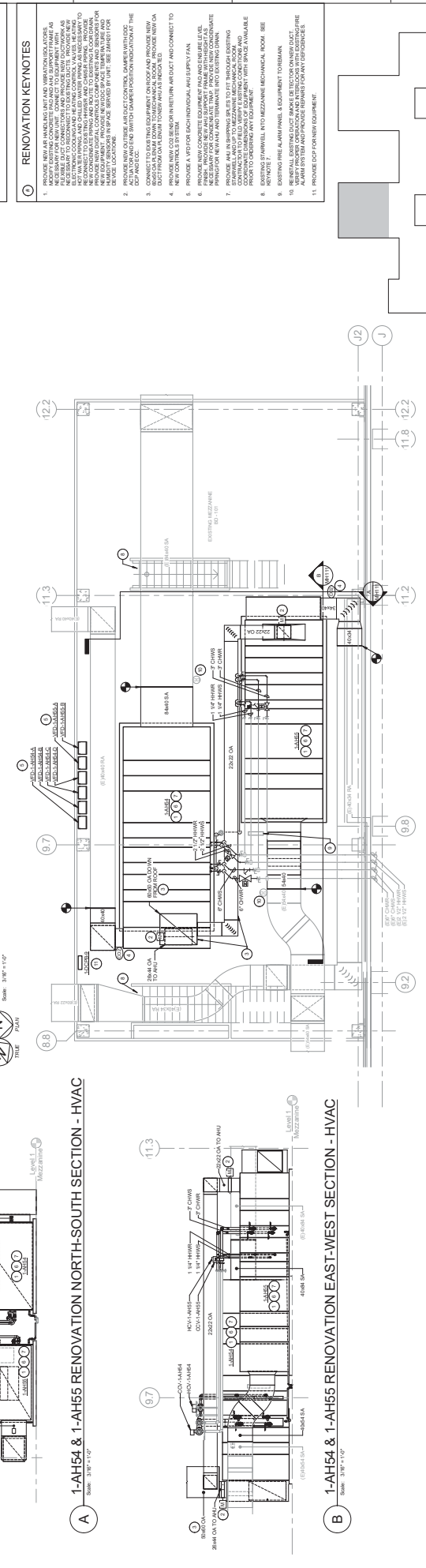
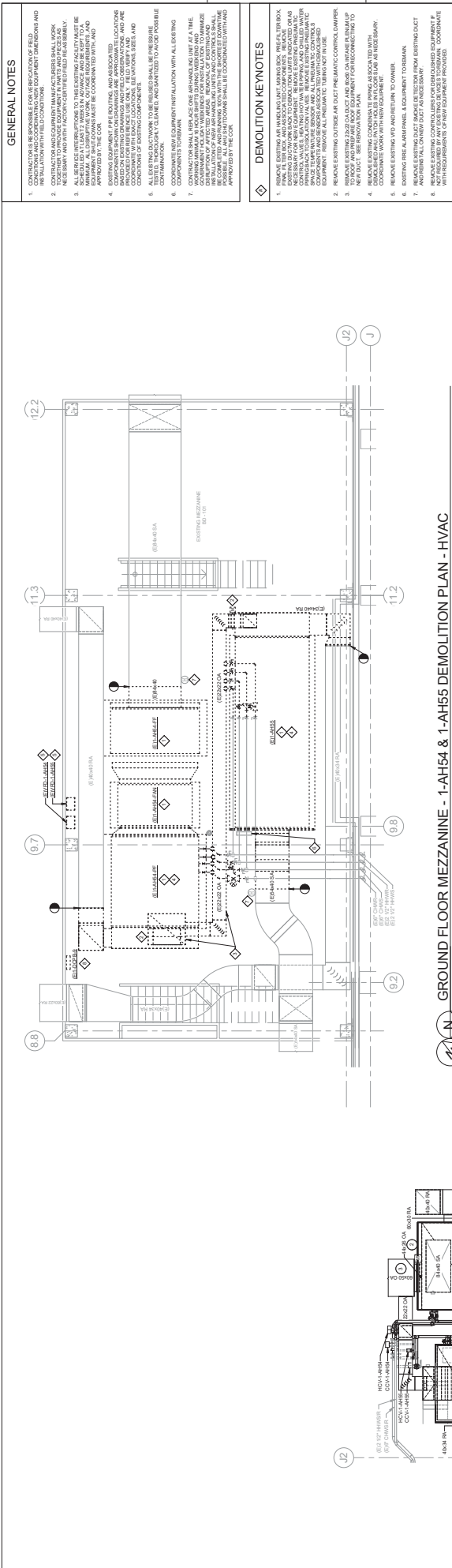


A 1-AH04 RENOVATION SECTION
Scale: 1/8" = 1'-0"

BASEMENT FLOOR - 1-AH04 DEMOLITION PLAN - HVAC
Scale: 1/8" = 1'-0"



ARCHITECT/ENGINEERS: MES GROUP 550 North Reed Street Suite 203 - 33409 813.259.4700 COA # 8004		CONSULTANTS: RYAN E. MORRIS, P.E. 73024		APPROVE: DALE A. BACK, P.E.	
PROJECT: REPLACE AIR HANDLERS, 4, 5, 54, 55, 27, NAH1, NAH2, AND NAH3		DATE: 02/24/2017		PROJECT NUMBER: MH110	
CLIENT: WEST PALM BEACH, FL ORCA		DATE: 02/24/2017		PROJECT NUMBER: MH110	
DESIGNER: DALE A. BACK, P.E.		DATE: 02/24/2017		PROJECT NUMBER: MH110	
ARCHITECT/ENGINEERS: MES GROUP 550 North Reed Street Suite 203 - 33409 813.259.4700 COA # 8004		CONSULTANTS: RYAN E. MORRIS, P.E. 73024		APPROVE: DALE A. BACK, P.E.	



Revision	By	Date	Description
1	DAE	02/24/2017	12:56:21 PM

2/24/2017 12:56:21 PM
 one eighth inch = one foot
 one quarter inch = one foot
 one half inch = one foot
 three quarters inch = one foot
 one inch = one foot
 one and one half inches = one foot
 three inches = one foot

GENERAL NOTES
 1. CONTRACTOR IS RESPONSIBLE FOR ANY VIOLATIONS OF FIELD INSTALLATION WITH FIELD CONDITIONS.
 2. CONTRACTOR TO PROVIDE ALL NECESSARY PERMITS AND INSTALLATION WITH FIELD CONDITIONS.
 3. ALL WORK SHALL BE COMPLETED WITHIN THE SPECIFIED TIME FRAME AND WITH FACTORY CHARGED FIELD REASSEMBLY.
 4. ALL WORK SHALL BE COMPLETED WITHIN THE SPECIFIED TIME FRAME AND WITH FACTORY CHARGED FIELD REASSEMBLY.
 5. ALL WORK SHALL BE COMPLETED WITHIN THE SPECIFIED TIME FRAME AND WITH FACTORY CHARGED FIELD REASSEMBLY.
 6. ALL WORK SHALL BE COMPLETED WITHIN THE SPECIFIED TIME FRAME AND WITH FACTORY CHARGED FIELD REASSEMBLY.
 7. ALL WORK SHALL BE COMPLETED WITHIN THE SPECIFIED TIME FRAME AND WITH FACTORY CHARGED FIELD REASSEMBLY.
 8. ALL WORK SHALL BE COMPLETED WITHIN THE SPECIFIED TIME FRAME AND WITH FACTORY CHARGED FIELD REASSEMBLY.
 9. ALL WORK SHALL BE COMPLETED WITHIN THE SPECIFIED TIME FRAME AND WITH FACTORY CHARGED FIELD REASSEMBLY.
 10. ALL WORK SHALL BE COMPLETED WITHIN THE SPECIFIED TIME FRAME AND WITH FACTORY CHARGED FIELD REASSEMBLY.
 11. ALL WORK SHALL BE COMPLETED WITHIN THE SPECIFIED TIME FRAME AND WITH FACTORY CHARGED FIELD REASSEMBLY.

DEMOLITION KEYNOTES
 1. REMOVE EXISTING MEZZANINE FLOOR AND ALL MECHANICAL EQUIPMENT, ELECTRICAL, AND PLUMBING. REMOVE ALL MECHANICAL EQUIPMENT, ELECTRICAL, AND PLUMBING.
 2. REMOVE EXISTING MEZZANINE FLOOR AND ALL MECHANICAL EQUIPMENT, ELECTRICAL, AND PLUMBING. REMOVE ALL MECHANICAL EQUIPMENT, ELECTRICAL, AND PLUMBING.
 3. REMOVE EXISTING MEZZANINE FLOOR AND ALL MECHANICAL EQUIPMENT, ELECTRICAL, AND PLUMBING. REMOVE ALL MECHANICAL EQUIPMENT, ELECTRICAL, AND PLUMBING.
 4. REMOVE EXISTING MEZZANINE FLOOR AND ALL MECHANICAL EQUIPMENT, ELECTRICAL, AND PLUMBING. REMOVE ALL MECHANICAL EQUIPMENT, ELECTRICAL, AND PLUMBING.
 5. REMOVE EXISTING MEZZANINE FLOOR AND ALL MECHANICAL EQUIPMENT, ELECTRICAL, AND PLUMBING. REMOVE ALL MECHANICAL EQUIPMENT, ELECTRICAL, AND PLUMBING.
 6. REMOVE EXISTING MEZZANINE FLOOR AND ALL MECHANICAL EQUIPMENT, ELECTRICAL, AND PLUMBING. REMOVE ALL MECHANICAL EQUIPMENT, ELECTRICAL, AND PLUMBING.
 7. REMOVE EXISTING MEZZANINE FLOOR AND ALL MECHANICAL EQUIPMENT, ELECTRICAL, AND PLUMBING. REMOVE ALL MECHANICAL EQUIPMENT, ELECTRICAL, AND PLUMBING.
 8. REMOVE EXISTING MEZZANINE FLOOR AND ALL MECHANICAL EQUIPMENT, ELECTRICAL, AND PLUMBING. REMOVE ALL MECHANICAL EQUIPMENT, ELECTRICAL, AND PLUMBING.
 9. REMOVE EXISTING MEZZANINE FLOOR AND ALL MECHANICAL EQUIPMENT, ELECTRICAL, AND PLUMBING. REMOVE ALL MECHANICAL EQUIPMENT, ELECTRICAL, AND PLUMBING.
 10. REMOVE EXISTING MEZZANINE FLOOR AND ALL MECHANICAL EQUIPMENT, ELECTRICAL, AND PLUMBING. REMOVE ALL MECHANICAL EQUIPMENT, ELECTRICAL, AND PLUMBING.
 11. REMOVE EXISTING MEZZANINE FLOOR AND ALL MECHANICAL EQUIPMENT, ELECTRICAL, AND PLUMBING. REMOVE ALL MECHANICAL EQUIPMENT, ELECTRICAL, AND PLUMBING.

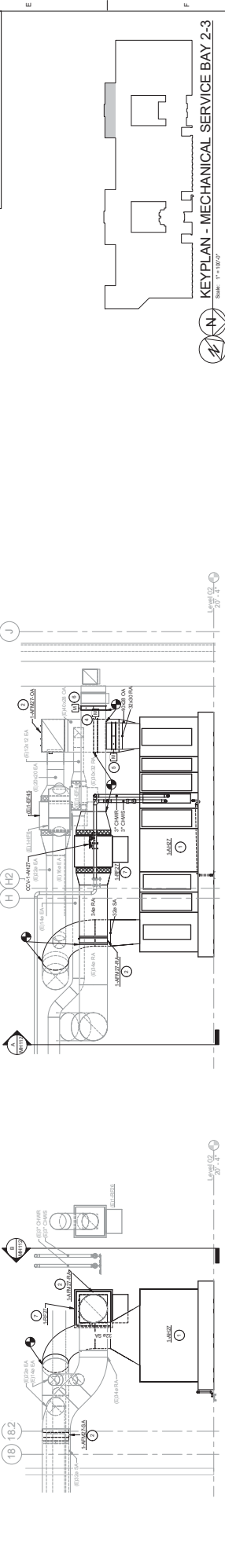
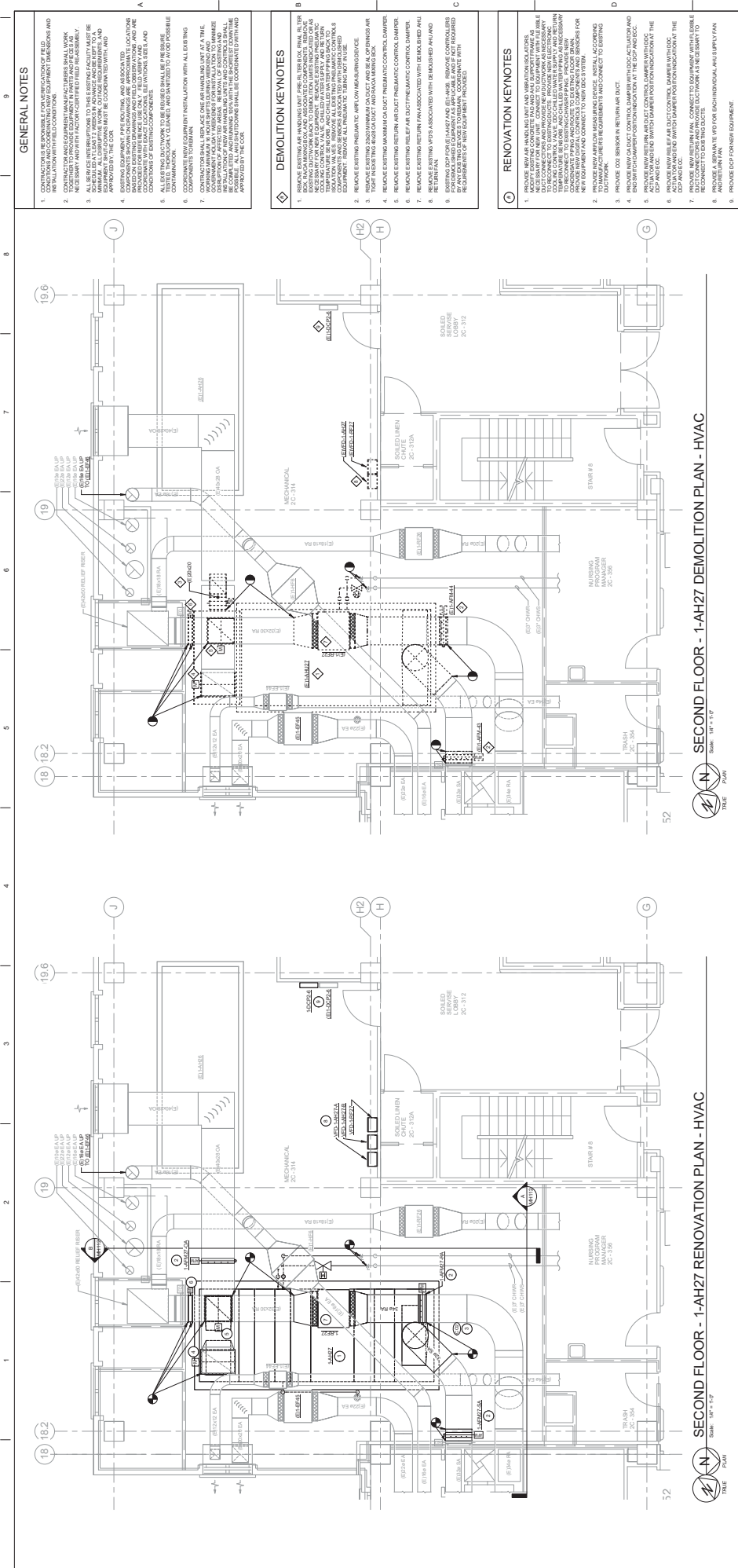
RENOVATION KEYNOTES
 1. PROVIDE NEW MECHANICAL AND ELECTRICAL EQUIPMENT AS SHOWN ON THE PLAN. PROVIDE NEW MECHANICAL AND ELECTRICAL EQUIPMENT AS SHOWN ON THE PLAN.
 2. PROVIDE NEW MECHANICAL AND ELECTRICAL EQUIPMENT AS SHOWN ON THE PLAN. PROVIDE NEW MECHANICAL AND ELECTRICAL EQUIPMENT AS SHOWN ON THE PLAN.
 3. PROVIDE NEW MECHANICAL AND ELECTRICAL EQUIPMENT AS SHOWN ON THE PLAN. PROVIDE NEW MECHANICAL AND ELECTRICAL EQUIPMENT AS SHOWN ON THE PLAN.
 4. PROVIDE NEW MECHANICAL AND ELECTRICAL EQUIPMENT AS SHOWN ON THE PLAN. PROVIDE NEW MECHANICAL AND ELECTRICAL EQUIPMENT AS SHOWN ON THE PLAN.
 5. PROVIDE NEW MECHANICAL AND ELECTRICAL EQUIPMENT AS SHOWN ON THE PLAN. PROVIDE NEW MECHANICAL AND ELECTRICAL EQUIPMENT AS SHOWN ON THE PLAN.
 6. PROVIDE NEW MECHANICAL AND ELECTRICAL EQUIPMENT AS SHOWN ON THE PLAN. PROVIDE NEW MECHANICAL AND ELECTRICAL EQUIPMENT AS SHOWN ON THE PLAN.
 7. PROVIDE NEW MECHANICAL AND ELECTRICAL EQUIPMENT AS SHOWN ON THE PLAN. PROVIDE NEW MECHANICAL AND ELECTRICAL EQUIPMENT AS SHOWN ON THE PLAN.
 8. PROVIDE NEW MECHANICAL AND ELECTRICAL EQUIPMENT AS SHOWN ON THE PLAN. PROVIDE NEW MECHANICAL AND ELECTRICAL EQUIPMENT AS SHOWN ON THE PLAN.
 9. PROVIDE NEW MECHANICAL AND ELECTRICAL EQUIPMENT AS SHOWN ON THE PLAN. PROVIDE NEW MECHANICAL AND ELECTRICAL EQUIPMENT AS SHOWN ON THE PLAN.
 10. PROVIDE NEW MECHANICAL AND ELECTRICAL EQUIPMENT AS SHOWN ON THE PLAN. PROVIDE NEW MECHANICAL AND ELECTRICAL EQUIPMENT AS SHOWN ON THE PLAN.
 11. PROVIDE NEW MECHANICAL AND ELECTRICAL EQUIPMENT AS SHOWN ON THE PLAN. PROVIDE NEW MECHANICAL AND ELECTRICAL EQUIPMENT AS SHOWN ON THE PLAN.

FINAL CONSTRUCTION DOCUMENTS
 FULLY SPRINKLERED
 Office of Construction and Facilities Management
 Building: REPLACE AIR HANDLERS, 4, 5, 54, 55, 27, NAH1, NAH2, AND NAH3
 Drawing Number: MH111
 Date: 02/24/2017
 Project: WEST PALM BEACH, FL, USA
 Approved: DALE A. BACK, P.E.
 Scale: 3/8" = 1'-0"

ARCHITECT/ENGINEERS:
MES GROUP
 550 North Rec Street
 Suite 200
 Fort Lauderdale, FL 33309
 813.259.4700
 COA # 8004

CONSULTANTS:
 RYAN E. MORRIS, P.E.
 73924

VA FORM 04-2311



GENERAL NOTES	
1.	CONTRACTOR IS RESPONSIBLE FOR RELOCATION OF FIELD INSTALLATION WITH FIELD CONDITIONS.
2.	CONTRACTOR TO PROVIDE ALL NECESSARY FIELD WORK TO INSTALLATION WITH FIELD CONDITIONS.
3.	NEEDS BERRY AND WITH FACTORY CENTER FIELD REASSEMBLY ASSEMBLED AT LEAST 12 HOURS IN ADVANCE AND LEFT TO BE ASSEMBLED AND REASSEMBLED AT LEAST 24 HOURS IN ADVANCE.
4.	EQUIPMENT TO BE INSTALLED MUST BE COORDINATED WITH AND APPROVED BY THE CLIENT AND ALL NECESSARY FIELD WORK MUST BE COMPLETED WITHIN AND AS SOON AS POSSIBLE.
5.	CONTRACTOR TO PROVIDE ALL NECESSARY FIELD WORK TO BE COMPLETED WITHIN AND AS SOON AS POSSIBLE.
6.	CONTRACTOR TO PROVIDE ALL NECESSARY FIELD WORK TO BE COMPLETED WITHIN AND AS SOON AS POSSIBLE.
7.	CONTRACTOR TO PROVIDE ALL NECESSARY FIELD WORK TO BE COMPLETED WITHIN AND AS SOON AS POSSIBLE.
8.	CONTRACTOR TO PROVIDE ALL NECESSARY FIELD WORK TO BE COMPLETED WITHIN AND AS SOON AS POSSIBLE.

DEMOLITION KEYNOTES	
1.	REMOVE EXISTING AIR HANDLING UNIT (AHU) FROM MECHANICAL ROOM (2C-314) AND REMOVE FROM BUILDING.
2.	REMOVE EXISTING AIR HANDLING UNIT (AHU) FROM MECHANICAL ROOM (2C-314) AND REMOVE FROM BUILDING.
3.	REMOVE EXISTING AIR HANDLING UNIT (AHU) FROM MECHANICAL ROOM (2C-314) AND REMOVE FROM BUILDING.
4.	REMOVE EXISTING AIR HANDLING UNIT (AHU) FROM MECHANICAL ROOM (2C-314) AND REMOVE FROM BUILDING.
5.	REMOVE EXISTING AIR HANDLING UNIT (AHU) FROM MECHANICAL ROOM (2C-314) AND REMOVE FROM BUILDING.
6.	REMOVE EXISTING AIR HANDLING UNIT (AHU) FROM MECHANICAL ROOM (2C-314) AND REMOVE FROM BUILDING.
7.	REMOVE EXISTING AIR HANDLING UNIT (AHU) FROM MECHANICAL ROOM (2C-314) AND REMOVE FROM BUILDING.
8.	REMOVE EXISTING AIR HANDLING UNIT (AHU) FROM MECHANICAL ROOM (2C-314) AND REMOVE FROM BUILDING.
9.	REMOVE EXISTING AIR HANDLING UNIT (AHU) FROM MECHANICAL ROOM (2C-314) AND REMOVE FROM BUILDING.

RENOVATION KEYNOTES	
1.	PROVIDE MEASUREMENTS AND ASSEMBLY DRAWINGS FOR ALL NEW EQUIPMENT TO BE INSTALLED.
2.	PROVIDE MEASUREMENTS AND ASSEMBLY DRAWINGS FOR ALL NEW EQUIPMENT TO BE INSTALLED.
3.	PROVIDE MEASUREMENTS AND ASSEMBLY DRAWINGS FOR ALL NEW EQUIPMENT TO BE INSTALLED.
4.	PROVIDE MEASUREMENTS AND ASSEMBLY DRAWINGS FOR ALL NEW EQUIPMENT TO BE INSTALLED.
5.	PROVIDE MEASUREMENTS AND ASSEMBLY DRAWINGS FOR ALL NEW EQUIPMENT TO BE INSTALLED.
6.	PROVIDE MEASUREMENTS AND ASSEMBLY DRAWINGS FOR ALL NEW EQUIPMENT TO BE INSTALLED.
7.	PROVIDE MEASUREMENTS AND ASSEMBLY DRAWINGS FOR ALL NEW EQUIPMENT TO BE INSTALLED.
8.	PROVIDE MEASUREMENTS AND ASSEMBLY DRAWINGS FOR ALL NEW EQUIPMENT TO BE INSTALLED.
9.	PROVIDE MEASUREMENTS AND ASSEMBLY DRAWINGS FOR ALL NEW EQUIPMENT TO BE INSTALLED.

CONSULTANTS:	
ARCHITECT/ENGINEERS:	MES GROUP 550 North Rice Street Suite 203 Ft. Lauderdale, FL 33309 813.259.4700 COA # 8304
CONSULTANTS:	RYAN E. MORRIS, P.E. 73324

FINAL CONSTRUCTION DOCUMENTS	
Project Name:	REPLACE AIR HANDLERS 4, 5, 5A, 5S, 27, NAH1, NAH2, AND NAH3
Project Location:	WEST PALM BEACH, FLORIDA
Issue Date:	02/24/2017
Drawn By:	DALE A. BACK, P.E.
Checked By:	
Reviewed By:	
Design Number:	MH112
Sheet Number:	54S-1E-R3
Sheet Title:	2/4

GENERAL NOTES

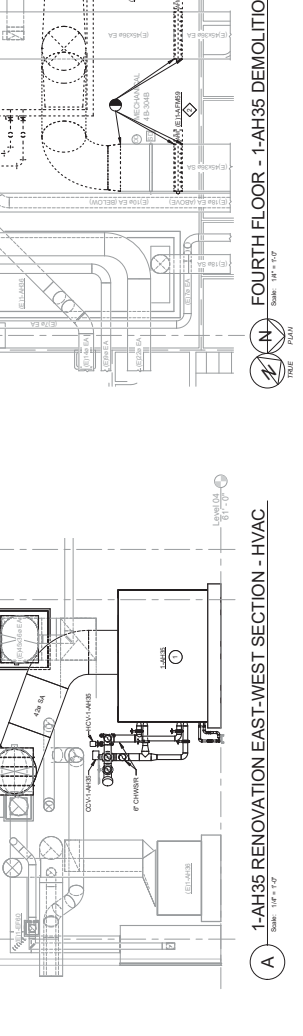
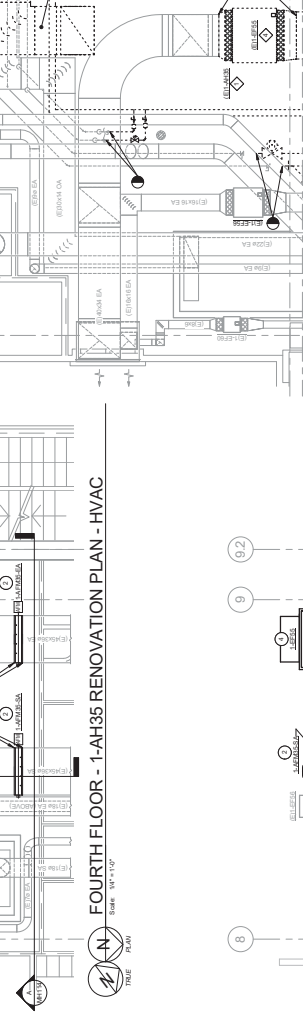
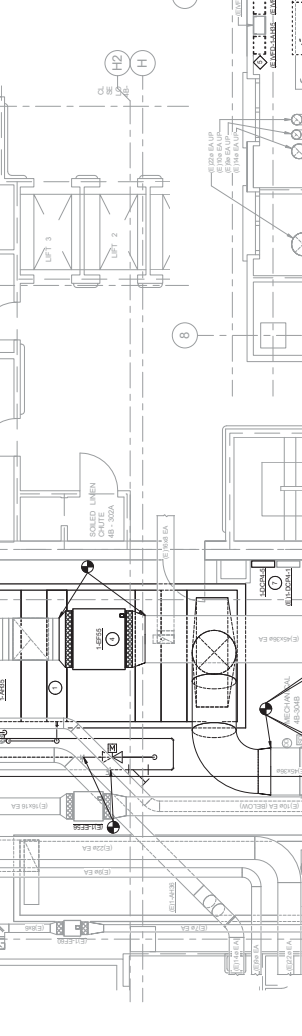
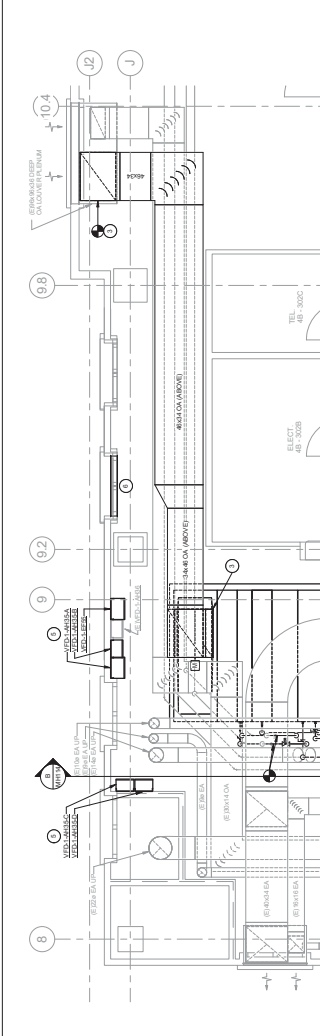
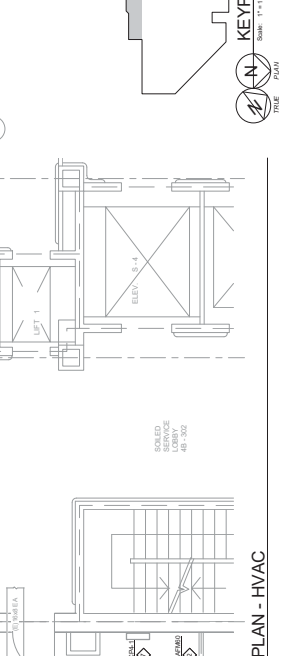
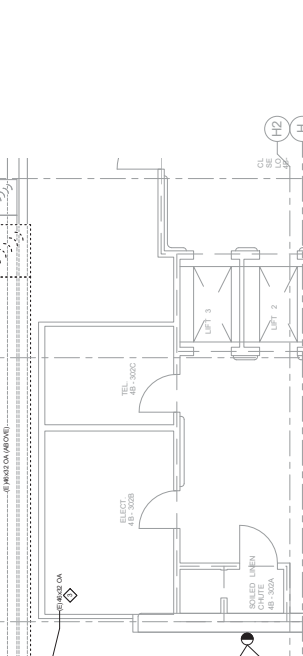
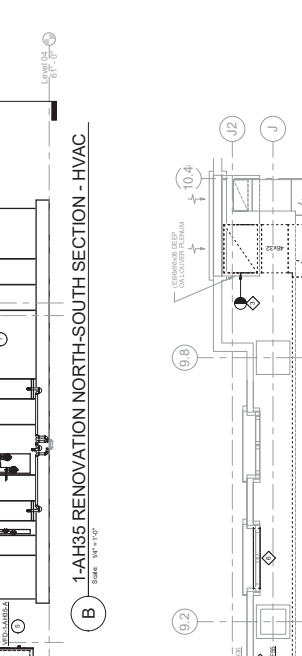
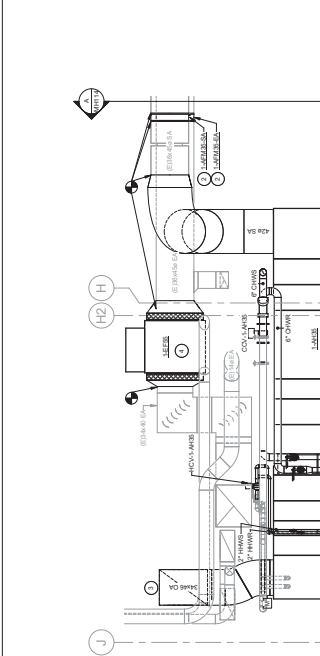
- CONTRACTOR IS RESPONSIBLE FOR ANY RELOCATION OF FIELD INSTALLATION WITH FIELD CONDITIONS.
- CONTRACTOR TO PROVIDE ALL NECESSARY FIELD INSTALLATION WITH FIELD CONDITIONS.
- NECESSARY AND WITH FACTORY CENTER FIELD INSTALLATION SHALL BE ASSEMBLED IN PLACE AND FIELD INSTALLATION SHALL BE ASSEMBLED IN PLACE AND FIELD INSTALLATION SHALL BE ASSEMBLED IN PLACE.
- EXISTING EQUIPMENT, THE RELOCATING, AND ASSOCIATED DUCTWORK SHALL BE REMOVED AND DISPOSED OF IN ACCORDANCE WITH ALL APPLICABLE REGULATIONS AND ALL APPLICABLE REGULATIONS.
- CONTRACTOR SHALL PROVIDE ALL NECESSARY FIELD INSTALLATION WITH FIELD CONDITIONS.
- CONTRACTOR SHALL PROVIDE ALL NECESSARY FIELD INSTALLATION WITH FIELD CONDITIONS.
- CONTRACTOR SHALL PROVIDE ALL NECESSARY FIELD INSTALLATION WITH FIELD CONDITIONS.
- CONTRACTOR SHALL PROVIDE ALL NECESSARY FIELD INSTALLATION WITH FIELD CONDITIONS.

DEMOLITION KEYNOTES

- REMOVE EXISTING AIR HANDLING UNIT AND ASSOCIATED DUCTWORK. DISPOSE OF IN ACCORDANCE WITH ALL APPLICABLE REGULATIONS AND ALL APPLICABLE REGULATIONS.
- REMOVE EXISTING PNEUMATIC AIR SYSTEM AND ASSOCIATED DUCTWORK. DISPOSE OF IN ACCORDANCE WITH ALL APPLICABLE REGULATIONS AND ALL APPLICABLE REGULATIONS.
- REMOVE EXISTING PNEUMATIC AIR SYSTEM AND ASSOCIATED DUCTWORK. DISPOSE OF IN ACCORDANCE WITH ALL APPLICABLE REGULATIONS AND ALL APPLICABLE REGULATIONS.
- REMOVE EXISTING PNEUMATIC AIR SYSTEM AND ASSOCIATED DUCTWORK. DISPOSE OF IN ACCORDANCE WITH ALL APPLICABLE REGULATIONS AND ALL APPLICABLE REGULATIONS.
- REMOVE EXISTING PNEUMATIC AIR SYSTEM AND ASSOCIATED DUCTWORK. DISPOSE OF IN ACCORDANCE WITH ALL APPLICABLE REGULATIONS AND ALL APPLICABLE REGULATIONS.
- REMOVE EXISTING PNEUMATIC AIR SYSTEM AND ASSOCIATED DUCTWORK. DISPOSE OF IN ACCORDANCE WITH ALL APPLICABLE REGULATIONS AND ALL APPLICABLE REGULATIONS.
- REMOVE EXISTING PNEUMATIC AIR SYSTEM AND ASSOCIATED DUCTWORK. DISPOSE OF IN ACCORDANCE WITH ALL APPLICABLE REGULATIONS AND ALL APPLICABLE REGULATIONS.
- REMOVE EXISTING PNEUMATIC AIR SYSTEM AND ASSOCIATED DUCTWORK. DISPOSE OF IN ACCORDANCE WITH ALL APPLICABLE REGULATIONS AND ALL APPLICABLE REGULATIONS.

RENOVATION KEYNOTES

- REMOVE EXISTING AIR HANDLING UNIT AND ASSOCIATED DUCTWORK. DISPOSE OF IN ACCORDANCE WITH ALL APPLICABLE REGULATIONS AND ALL APPLICABLE REGULATIONS.
- REMOVE EXISTING PNEUMATIC AIR SYSTEM AND ASSOCIATED DUCTWORK. DISPOSE OF IN ACCORDANCE WITH ALL APPLICABLE REGULATIONS AND ALL APPLICABLE REGULATIONS.
- REMOVE EXISTING PNEUMATIC AIR SYSTEM AND ASSOCIATED DUCTWORK. DISPOSE OF IN ACCORDANCE WITH ALL APPLICABLE REGULATIONS AND ALL APPLICABLE REGULATIONS.
- REMOVE EXISTING PNEUMATIC AIR SYSTEM AND ASSOCIATED DUCTWORK. DISPOSE OF IN ACCORDANCE WITH ALL APPLICABLE REGULATIONS AND ALL APPLICABLE REGULATIONS.
- REMOVE EXISTING PNEUMATIC AIR SYSTEM AND ASSOCIATED DUCTWORK. DISPOSE OF IN ACCORDANCE WITH ALL APPLICABLE REGULATIONS AND ALL APPLICABLE REGULATIONS.
- REMOVE EXISTING PNEUMATIC AIR SYSTEM AND ASSOCIATED DUCTWORK. DISPOSE OF IN ACCORDANCE WITH ALL APPLICABLE REGULATIONS AND ALL APPLICABLE REGULATIONS.
- REMOVE EXISTING PNEUMATIC AIR SYSTEM AND ASSOCIATED DUCTWORK. DISPOSE OF IN ACCORDANCE WITH ALL APPLICABLE REGULATIONS AND ALL APPLICABLE REGULATIONS.
- REMOVE EXISTING PNEUMATIC AIR SYSTEM AND ASSOCIATED DUCTWORK. DISPOSE OF IN ACCORDANCE WITH ALL APPLICABLE REGULATIONS AND ALL APPLICABLE REGULATIONS.



KEYPLAN - MECH. SERVICE BAY 4-2
Scale: 1/4" = 1'-0"

Office of Construction and Facilities Management
Drawing Number: MH114
Date: 02/24/2017
Drawn: REM
Checked: REM
Approved: DALE A. BACK, P.E.

550 North Rice Street
Suite 203
Tampa, FL 33609
813.259.4700
COA # 8304

ARCHITECT/ENGINEERS:
MES GROUP

CONSULTANTS:
RYAN E. MORRIS, P.E.
73324

FINAL CONSTRUCTION DOCUMENTS
FULLY SPRINKLERED

REPLACE AIR HANDLERS 4, 5, 5A, 55, 27, NAH1, NAH2, AND NAH3
WESIT PALM BEACH, FL ORDA
02/24/2017
DALE A. BACK, P.E.

GENERAL NOTES

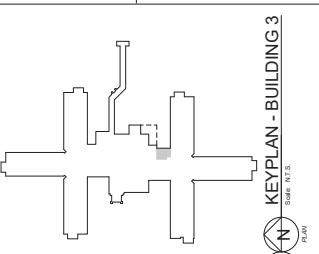
- CONTRACTOR IS RESPONSIBLE FOR ANY REVISIONS OF FIELD INSTALLATION WITH FIELD CONDITIONS.
- CONTRACTOR TO PROVIDE ALL NECESSARY MATERIALS AND EQUIPMENT TO BE INSTALLED IN FIELD. ALL MATERIALS AND EQUIPMENT TO BE INSTALLED IN FIELD SHALL BE APPROVED BY THE ARCHITECT AND THE CONTRACTOR SHALL BE RESPONSIBLE FOR THE PROTECTION OF ALL EXISTING UTILITIES AND EQUIPMENT TO REMAIN. ALL MATERIALS AND EQUIPMENT TO BE INSTALLED IN FIELD SHALL BE APPROVED BY THE ARCHITECT AND THE CONTRACTOR SHALL BE RESPONSIBLE FOR THE PROTECTION OF ALL EXISTING UTILITIES AND EQUIPMENT TO REMAIN.
- CONTRACTOR SHALL BE RESPONSIBLE FOR THE PROTECTION OF ALL EXISTING UTILITIES AND EQUIPMENT TO REMAIN. ALL MATERIALS AND EQUIPMENT TO BE INSTALLED IN FIELD SHALL BE APPROVED BY THE ARCHITECT AND THE CONTRACTOR SHALL BE RESPONSIBLE FOR THE PROTECTION OF ALL EXISTING UTILITIES AND EQUIPMENT TO REMAIN.
- CONTRACTOR SHALL BE RESPONSIBLE FOR THE PROTECTION OF ALL EXISTING UTILITIES AND EQUIPMENT TO REMAIN. ALL MATERIALS AND EQUIPMENT TO BE INSTALLED IN FIELD SHALL BE APPROVED BY THE ARCHITECT AND THE CONTRACTOR SHALL BE RESPONSIBLE FOR THE PROTECTION OF ALL EXISTING UTILITIES AND EQUIPMENT TO REMAIN.
- CONTRACTOR SHALL BE RESPONSIBLE FOR THE PROTECTION OF ALL EXISTING UTILITIES AND EQUIPMENT TO REMAIN. ALL MATERIALS AND EQUIPMENT TO BE INSTALLED IN FIELD SHALL BE APPROVED BY THE ARCHITECT AND THE CONTRACTOR SHALL BE RESPONSIBLE FOR THE PROTECTION OF ALL EXISTING UTILITIES AND EQUIPMENT TO REMAIN.
- CONTRACTOR SHALL BE RESPONSIBLE FOR THE PROTECTION OF ALL EXISTING UTILITIES AND EQUIPMENT TO REMAIN. ALL MATERIALS AND EQUIPMENT TO BE INSTALLED IN FIELD SHALL BE APPROVED BY THE ARCHITECT AND THE CONTRACTOR SHALL BE RESPONSIBLE FOR THE PROTECTION OF ALL EXISTING UTILITIES AND EQUIPMENT TO REMAIN.
- CONTRACTOR SHALL BE RESPONSIBLE FOR THE PROTECTION OF ALL EXISTING UTILITIES AND EQUIPMENT TO REMAIN. ALL MATERIALS AND EQUIPMENT TO BE INSTALLED IN FIELD SHALL BE APPROVED BY THE ARCHITECT AND THE CONTRACTOR SHALL BE RESPONSIBLE FOR THE PROTECTION OF ALL EXISTING UTILITIES AND EQUIPMENT TO REMAIN.
- CONTRACTOR SHALL BE RESPONSIBLE FOR THE PROTECTION OF ALL EXISTING UTILITIES AND EQUIPMENT TO REMAIN. ALL MATERIALS AND EQUIPMENT TO BE INSTALLED IN FIELD SHALL BE APPROVED BY THE ARCHITECT AND THE CONTRACTOR SHALL BE RESPONSIBLE FOR THE PROTECTION OF ALL EXISTING UTILITIES AND EQUIPMENT TO REMAIN.

DEMOLITION KEYNOTES

- REMOVE EXISTING AIR HANDLING UNIT (PAH) PER EXISTING PLAN. ALL AIR HANDLING UNITS SHALL BE REMOVED AND THE SPACE SHALL BE LEFT OPEN TO THE EXISTING CEILING. ALL EXISTING DUCTWORK SHALL BE REMOVED AND THE SPACE SHALL BE LEFT OPEN TO THE EXISTING CEILING. ALL EXISTING ELECTRICAL AND MECHANICAL EQUIPMENT SHALL BE REMOVED AND THE SPACE SHALL BE LEFT OPEN TO THE EXISTING CEILING. ALL EXISTING STRUCTURAL ELEMENTS SHALL BE REMOVED AND THE SPACE SHALL BE LEFT OPEN TO THE EXISTING CEILING. ALL EXISTING FINISHES SHALL BE REMOVED AND THE SPACE SHALL BE LEFT OPEN TO THE EXISTING CEILING.
- REMOVE EXISTING PREHUNG AIR HANDLING UNITS. REMOVE ALL EXISTING DUCTWORK AND EQUIPMENT ASSOCIATED WITH DEMOLISHED UNIT. REMOVE EXISTING RETURN AIR FILTERS AND EQUIPMENT ASSOCIATED WITH DEMOLISHED UNIT. REMOVE EXISTING RETURN AIR FILTERS AND EQUIPMENT ASSOCIATED WITH DEMOLISHED UNIT.
- REMOVE EXISTING RETURN AIR FILTERS AND EQUIPMENT ASSOCIATED WITH DEMOLISHED UNIT. REMOVE EXISTING RETURN AIR FILTERS AND EQUIPMENT ASSOCIATED WITH DEMOLISHED UNIT.
- REMOVE EXISTING RETURN AIR FILTERS AND EQUIPMENT ASSOCIATED WITH DEMOLISHED UNIT. REMOVE EXISTING RETURN AIR FILTERS AND EQUIPMENT ASSOCIATED WITH DEMOLISHED UNIT.
- REMOVE EXISTING RETURN AIR FILTERS AND EQUIPMENT ASSOCIATED WITH DEMOLISHED UNIT. REMOVE EXISTING RETURN AIR FILTERS AND EQUIPMENT ASSOCIATED WITH DEMOLISHED UNIT.
- REMOVE EXISTING RETURN AIR FILTERS AND EQUIPMENT ASSOCIATED WITH DEMOLISHED UNIT. REMOVE EXISTING RETURN AIR FILTERS AND EQUIPMENT ASSOCIATED WITH DEMOLISHED UNIT.
- REMOVE EXISTING RETURN AIR FILTERS AND EQUIPMENT ASSOCIATED WITH DEMOLISHED UNIT. REMOVE EXISTING RETURN AIR FILTERS AND EQUIPMENT ASSOCIATED WITH DEMOLISHED UNIT.
- REMOVE EXISTING RETURN AIR FILTERS AND EQUIPMENT ASSOCIATED WITH DEMOLISHED UNIT. REMOVE EXISTING RETURN AIR FILTERS AND EQUIPMENT ASSOCIATED WITH DEMOLISHED UNIT.

RENOVATION KEYNOTES

- REMOVE EXISTING AIR HANDLING UNIT (PAH) PER EXISTING PLAN. ALL AIR HANDLING UNITS SHALL BE REMOVED AND THE SPACE SHALL BE LEFT OPEN TO THE EXISTING CEILING. ALL EXISTING DUCTWORK SHALL BE REMOVED AND THE SPACE SHALL BE LEFT OPEN TO THE EXISTING CEILING. ALL EXISTING ELECTRICAL AND MECHANICAL EQUIPMENT SHALL BE REMOVED AND THE SPACE SHALL BE LEFT OPEN TO THE EXISTING CEILING. ALL EXISTING STRUCTURAL ELEMENTS SHALL BE REMOVED AND THE SPACE SHALL BE LEFT OPEN TO THE EXISTING CEILING. ALL EXISTING FINISHES SHALL BE REMOVED AND THE SPACE SHALL BE LEFT OPEN TO THE EXISTING CEILING.
- REMOVE EXISTING PREHUNG AIR HANDLING UNITS. REMOVE ALL EXISTING DUCTWORK AND EQUIPMENT ASSOCIATED WITH DEMOLISHED UNIT. REMOVE EXISTING RETURN AIR FILTERS AND EQUIPMENT ASSOCIATED WITH DEMOLISHED UNIT. REMOVE EXISTING RETURN AIR FILTERS AND EQUIPMENT ASSOCIATED WITH DEMOLISHED UNIT.
- REMOVE EXISTING RETURN AIR FILTERS AND EQUIPMENT ASSOCIATED WITH DEMOLISHED UNIT. REMOVE EXISTING RETURN AIR FILTERS AND EQUIPMENT ASSOCIATED WITH DEMOLISHED UNIT.
- REMOVE EXISTING RETURN AIR FILTERS AND EQUIPMENT ASSOCIATED WITH DEMOLISHED UNIT. REMOVE EXISTING RETURN AIR FILTERS AND EQUIPMENT ASSOCIATED WITH DEMOLISHED UNIT.
- REMOVE EXISTING RETURN AIR FILTERS AND EQUIPMENT ASSOCIATED WITH DEMOLISHED UNIT. REMOVE EXISTING RETURN AIR FILTERS AND EQUIPMENT ASSOCIATED WITH DEMOLISHED UNIT.
- REMOVE EXISTING RETURN AIR FILTERS AND EQUIPMENT ASSOCIATED WITH DEMOLISHED UNIT. REMOVE EXISTING RETURN AIR FILTERS AND EQUIPMENT ASSOCIATED WITH DEMOLISHED UNIT.
- REMOVE EXISTING RETURN AIR FILTERS AND EQUIPMENT ASSOCIATED WITH DEMOLISHED UNIT. REMOVE EXISTING RETURN AIR FILTERS AND EQUIPMENT ASSOCIATED WITH DEMOLISHED UNIT.
- REMOVE EXISTING RETURN AIR FILTERS AND EQUIPMENT ASSOCIATED WITH DEMOLISHED UNIT. REMOVE EXISTING RETURN AIR FILTERS AND EQUIPMENT ASSOCIATED WITH DEMOLISHED UNIT.



FINAL CONSTRUCTION DOCUMENTS

Office of Construction and Facilities Management

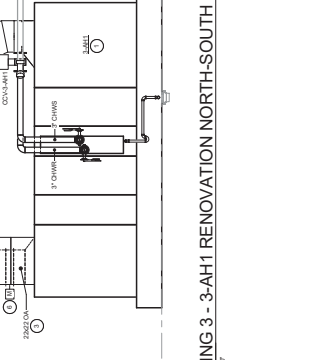
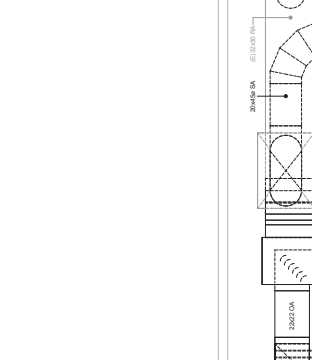
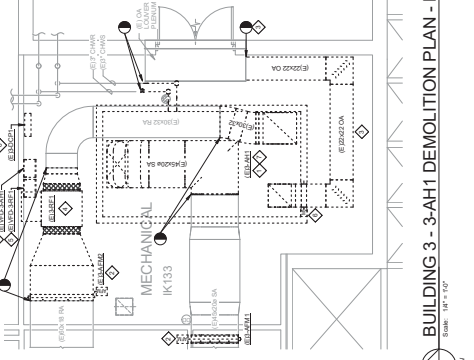
Project Number: 5485-1E-R3

Drawing Number: MH131A

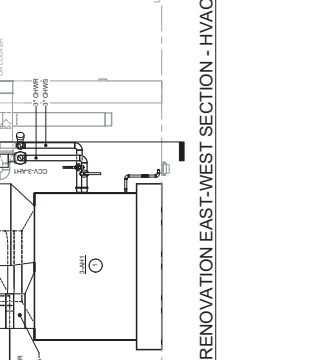
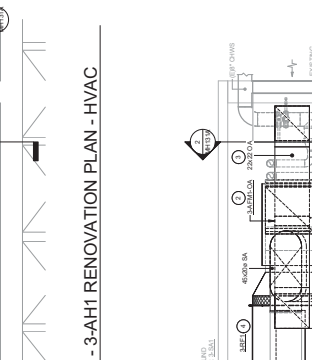
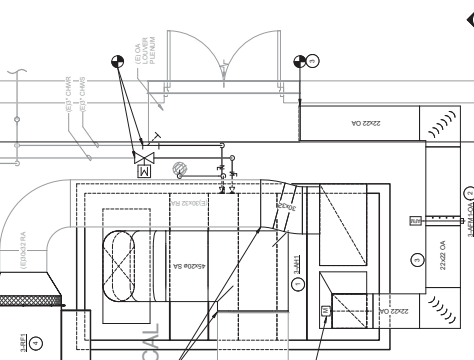
Scale: 1/8" = 1'-0"

Page: 9 of 29

Department of Information Systems



Project Name:	REPLACE AIR HANDLERS 4, 5, 5A, 55, 57, NAH1, NAH2, AND NAH3
Project Location:	WEST PALM BEACH, FLORIDA
Project Number:	02/24/2017
Project Name:	DALE A. BACK, P. E.
Project Number:	
Project Location:	
Project Number:	
Project Location:	
Project Number:	
Project Location:	



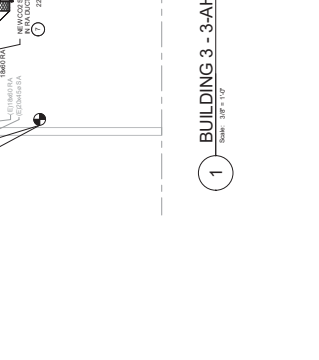
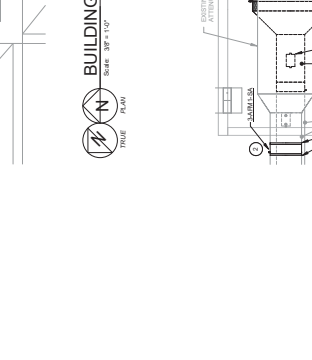
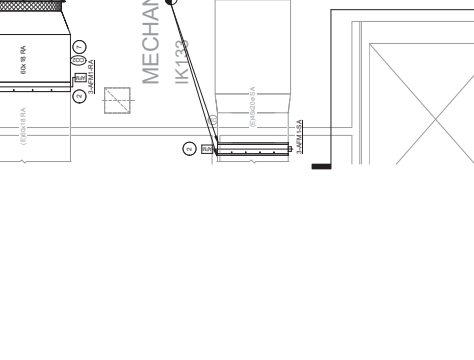
ARCHITECT/ENGINEERS:

MES GROUP

550 North Rice Street
Suite 203
West Palm Beach, FL 33409
813.259.4700
COA # 8004

CONSULTANTS:

RYAN E. MORRIS, P.E.
73024



Project Name:	REPLACE AIR HANDLERS 4, 5, 5A, 55, 57, NAH1, NAH2, AND NAH3
Project Location:	WEST PALM BEACH, FLORIDA
Project Number:	02/24/2017
Project Name:	DALE A. BACK, P. E.
Project Number:	
Project Location:	
Project Number:	
Project Location:	
Project Number:	
Project Location:	



Project Name:	REPLACE AIR HANDLERS 4, 5, 5A, 55, 57, NAH1, NAH2, AND NAH3
Project Location:	WEST PALM BEACH, FLORIDA
Project Number:	02/24/2017
Project Name:	DALE A. BACK, P. E.
Project Number:	
Project Location:	
Project Number:	
Project Location:	
Project Number:	
Project Location:	

GENERAL NOTES

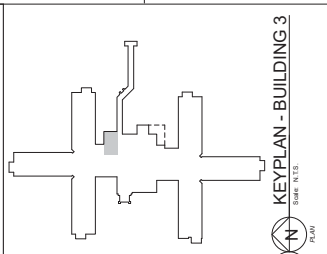
1. CONTRACTOR IS RESPONSIBLE FOR ANY VIOLATIONS OF FIELD OR INSTALLATION WITH FIELD CONDITIONS.
2. CONTRACTOR TO VERIFY ALL FIELD CONDITIONS PRIOR TO COMMENCEMENT OF WORK AND REPORT ANY DISCREPANCIES TO ARCHITECT IMMEDIATELY.
3. ALL WORK SHALL BE IN ACCORDANCE WITH THE LATEST EDITIONS OF ALL APPLICABLE CODES AND REGULATIONS.
4. CONTRACTOR SHALL BE RESPONSIBLE FOR OBTAINING ALL NECESSARY PERMITS AND APPROVALS FROM ALL APPLICABLE AGENCIES.
5. CONTRACTOR SHALL BE RESPONSIBLE FOR PROTECTING ALL EXISTING UTILITIES AND STRUCTURES TO REMAIN.
6. CONTRACTOR SHALL BE RESPONSIBLE FOR MAINTAINING ACCESS TO ALL ADJACENT AREAS AND STRUCTURES.
7. CONTRACTOR SHALL BE RESPONSIBLE FOR OBTAINING ALL NECESSARY APPROVALS FROM ALL APPLICABLE AGENCIES.
8. CONTRACTOR SHALL BE RESPONSIBLE FOR OBTAINING ALL NECESSARY APPROVALS FROM ALL APPLICABLE AGENCIES.

DEMOLITION KEYNOTES

1. REMOVE EXISTING CONCRETE FLOOR AND ALL UNDERLYING STRUCTURE TO EXPOSE ALL REINFORCING BARS AND PROVIDE PROPER CONNECTIONS TO REMAINING FLOOR.
2. REMOVE EXISTING CONCRETE WALLS AND ALL UNDERLYING STRUCTURE TO EXPOSE ALL REINFORCING BARS AND PROVIDE PROPER CONNECTIONS TO REMAINING WALLS.
3. REMOVE EXISTING CONCRETE CEILING AND ALL UNDERLYING STRUCTURE TO EXPOSE ALL REINFORCING BARS AND PROVIDE PROPER CONNECTIONS TO REMAINING CEILING.
4. REMOVE EXISTING CONCRETE ROOF AND ALL UNDERLYING STRUCTURE TO EXPOSE ALL REINFORCING BARS AND PROVIDE PROPER CONNECTIONS TO REMAINING ROOF.
5. REMOVE EXISTING CONCRETE FOUNDATION AND ALL UNDERLYING STRUCTURE TO EXPOSE ALL REINFORCING BARS AND PROVIDE PROPER CONNECTIONS TO REMAINING FOUNDATION.
6. REMOVE EXISTING CONCRETE DRIVEWAY AND ALL UNDERLYING STRUCTURE TO EXPOSE ALL REINFORCING BARS AND PROVIDE PROPER CONNECTIONS TO REMAINING DRIVEWAY.
7. REMOVE EXISTING CONCRETE DRIVEWAY AND ALL UNDERLYING STRUCTURE TO EXPOSE ALL REINFORCING BARS AND PROVIDE PROPER CONNECTIONS TO REMAINING DRIVEWAY.
8. REMOVE EXISTING CONCRETE DRIVEWAY AND ALL UNDERLYING STRUCTURE TO EXPOSE ALL REINFORCING BARS AND PROVIDE PROPER CONNECTIONS TO REMAINING DRIVEWAY.

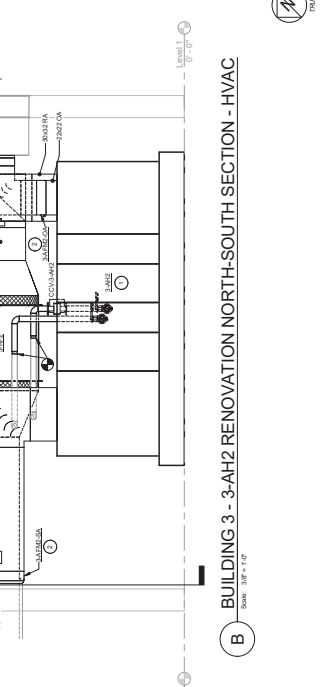
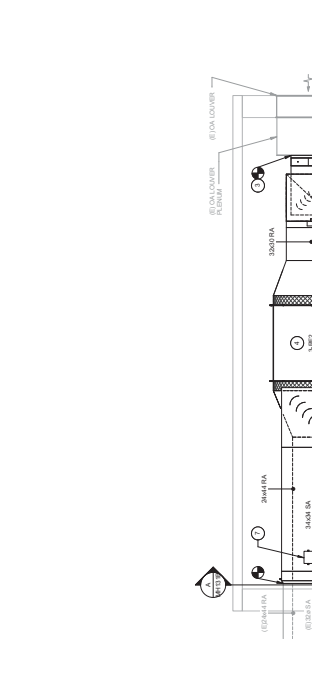
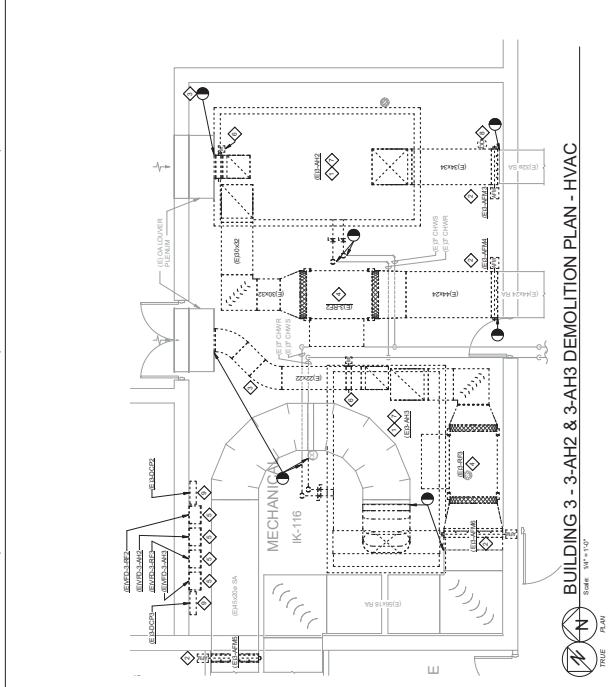
RENOVATION KEYNOTES

1. PROVIDE NEW 4" MIN. THICK CONCRETE FLOOR AND ALL UNDERLYING STRUCTURE TO EXPOSE ALL REINFORCING BARS AND PROVIDE PROPER CONNECTIONS TO REMAINING FLOOR.
2. PROVIDE NEW 4" MIN. THICK CONCRETE WALLS AND ALL UNDERLYING STRUCTURE TO EXPOSE ALL REINFORCING BARS AND PROVIDE PROPER CONNECTIONS TO REMAINING WALLS.
3. PROVIDE NEW 4" MIN. THICK CONCRETE CEILING AND ALL UNDERLYING STRUCTURE TO EXPOSE ALL REINFORCING BARS AND PROVIDE PROPER CONNECTIONS TO REMAINING CEILING.
4. PROVIDE NEW 4" MIN. THICK CONCRETE ROOF AND ALL UNDERLYING STRUCTURE TO EXPOSE ALL REINFORCING BARS AND PROVIDE PROPER CONNECTIONS TO REMAINING ROOF.
5. PROVIDE NEW 4" MIN. THICK CONCRETE FOUNDATION AND ALL UNDERLYING STRUCTURE TO EXPOSE ALL REINFORCING BARS AND PROVIDE PROPER CONNECTIONS TO REMAINING FOUNDATION.
6. PROVIDE NEW 4" MIN. THICK CONCRETE DRIVEWAY AND ALL UNDERLYING STRUCTURE TO EXPOSE ALL REINFORCING BARS AND PROVIDE PROPER CONNECTIONS TO REMAINING DRIVEWAY.
7. PROVIDE NEW 4" MIN. THICK CONCRETE DRIVEWAY AND ALL UNDERLYING STRUCTURE TO EXPOSE ALL REINFORCING BARS AND PROVIDE PROPER CONNECTIONS TO REMAINING DRIVEWAY.
8. PROVIDE NEW 4" MIN. THICK CONCRETE DRIVEWAY AND ALL UNDERLYING STRUCTURE TO EXPOSE ALL REINFORCING BARS AND PROVIDE PROPER CONNECTIONS TO REMAINING DRIVEWAY.



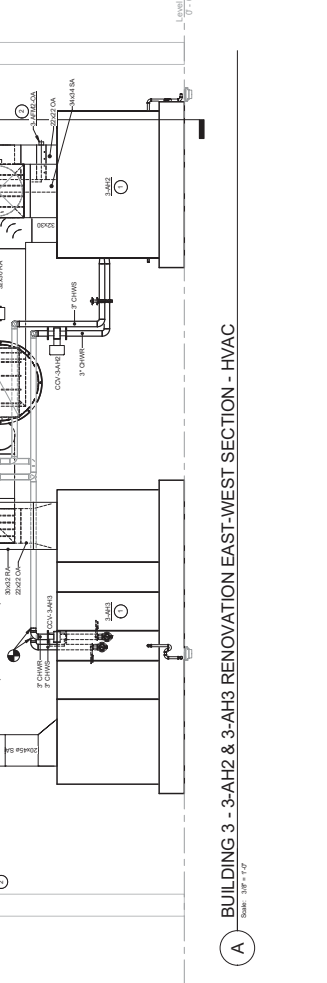
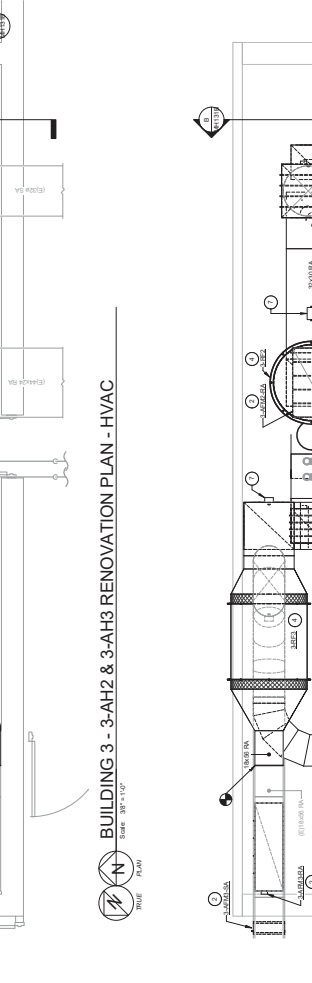
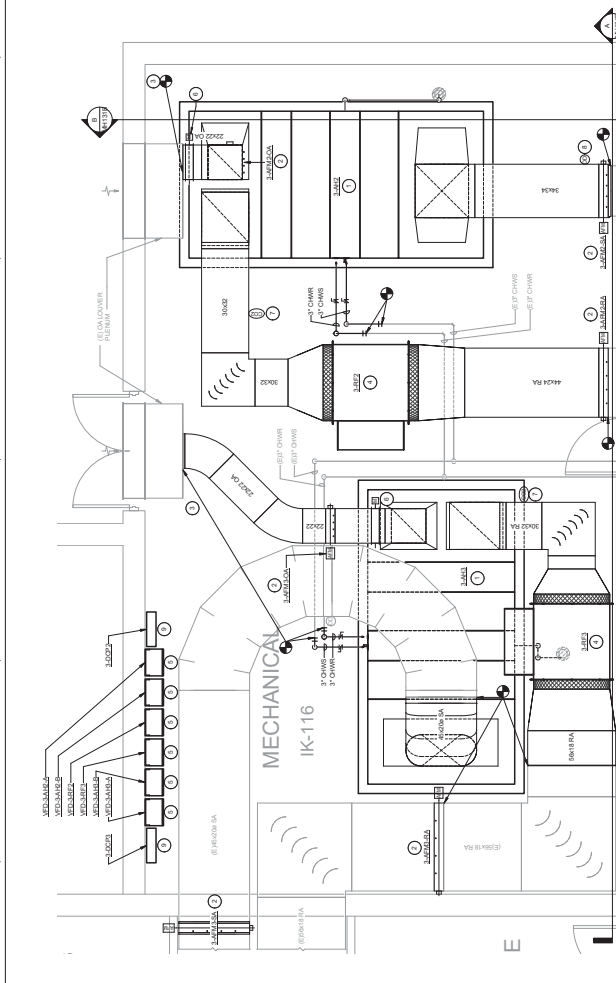
FINAL CONSTRUCTION DOCUMENTS FULLY SPRINKLERED

Project Name	Office of Construction and Facilities Management
Project Number	545-14-93
Drawing Number	MH131B
Revision	02/24/2017
Author	DALE A. BACK, P.E.
Checker	REM
Reviewer	REM



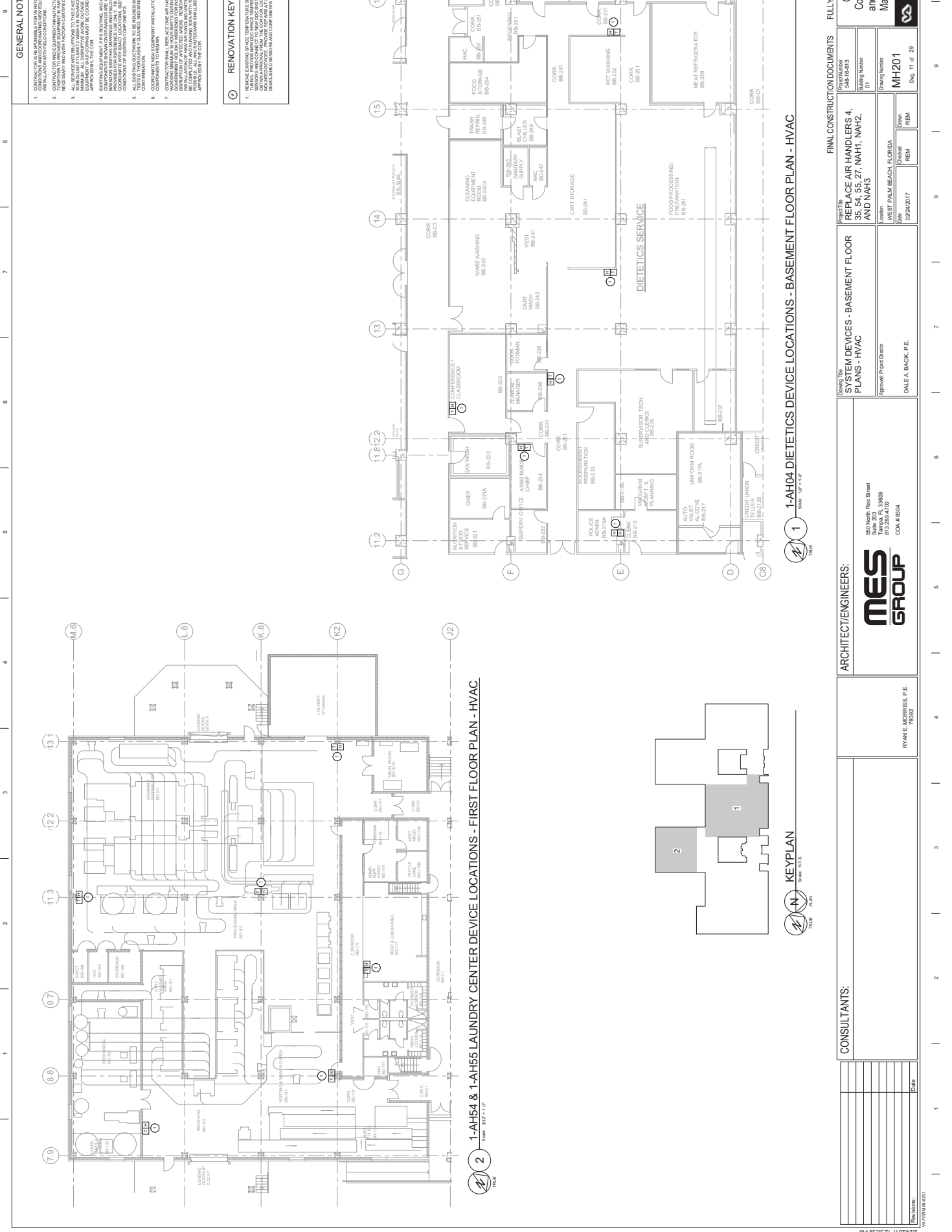
CONSULTANTS:

Company Name	MES GROUP
Address	550 North Red Street, Suite 203, 33409, 813.259.4700, COA # 8004
Project Director	RYAN E. MORRIS, P.E.
Project Number	545-14-93
Drawing Number	MH131B
Revision	02/24/2017
Author	DALE A. BACK, P.E.
Checker	REM
Reviewer	REM

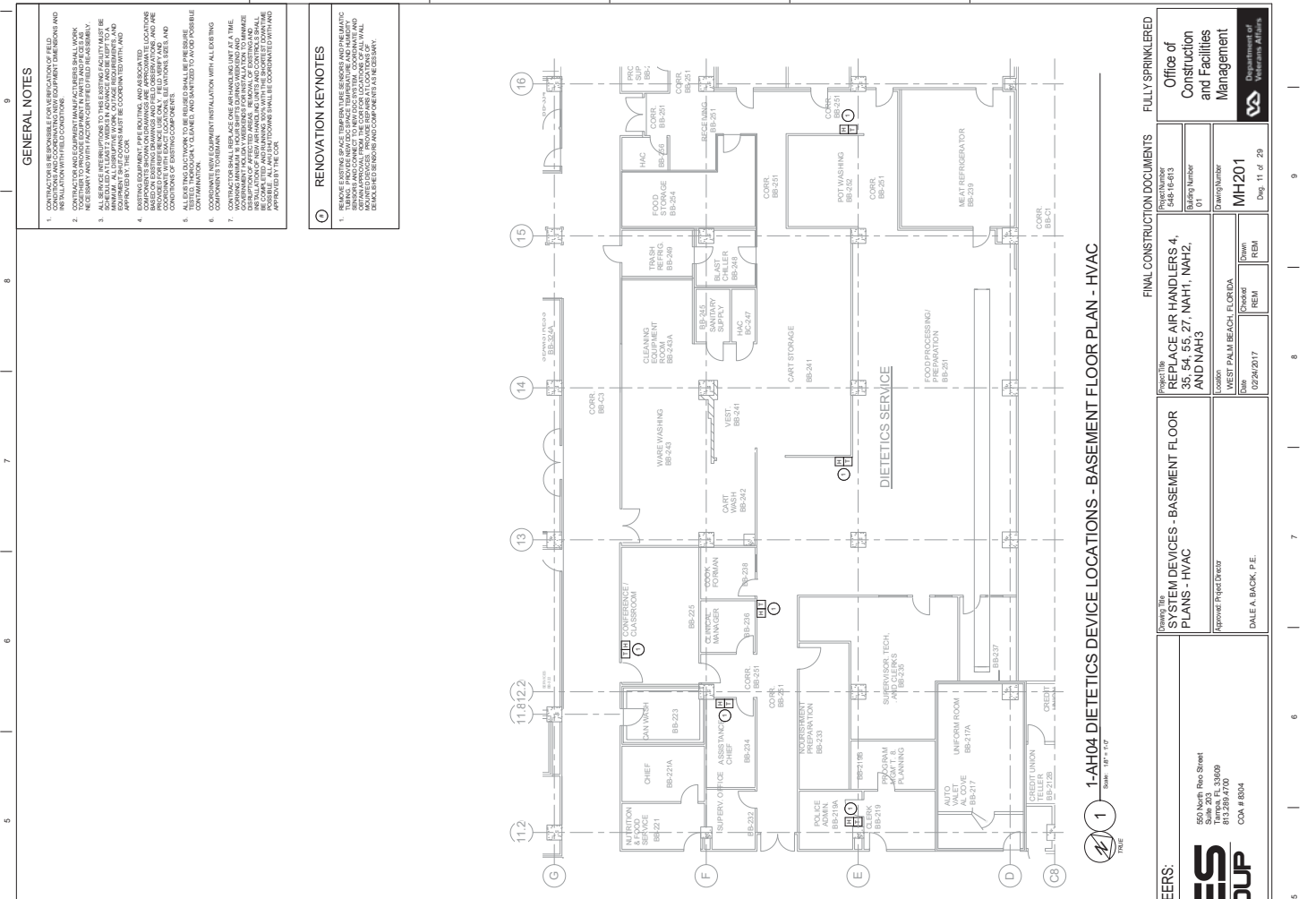


ARCHITECT/ENGINEERS:

Company Name	MES GROUP
Address	550 North Red Street, Suite 203, 33409, 813.259.4700, COA # 8004
Project Director	RYAN E. MORRIS, P.E.
Project Number	545-14-93
Drawing Number	MH131B
Revision	02/24/2017
Author	DALE A. BACK, P.E.
Checker	REM
Reviewer	REM



1-AH54 & 1-AH55 LAUNDRY CENTER DEVICE LOCATIONS - FIRST FLOOR PLAN - HVAC



1-AH04 DIAGNOSTICS DEVICE LOCATIONS - BASEMENT FLOOR PLAN - HVAC

GENERAL NOTES

1. CONTRACTOR IS RESPONSIBLE FOR THE VERIFICATION OF FIELD CONDITIONS PRIOR TO COMMENCEMENT OF WORK AND TO REPORT DISCREPANCIES AND INSTALLATION WITH FIELD CONDITIONS.
2. CONTRACTOR TO VERIFY THE EXISTING WORK AND TO REPORT DISCREPANCIES AND INSTALLATION WITH FIELD CONDITIONS.
3. CONTRACTOR TO VERIFY THE EXISTING WORK AND TO REPORT DISCREPANCIES AND INSTALLATION WITH FIELD CONDITIONS.
4. CONTRACTOR TO VERIFY THE EXISTING WORK AND TO REPORT DISCREPANCIES AND INSTALLATION WITH FIELD CONDITIONS.
5. CONTRACTOR TO VERIFY THE EXISTING WORK AND TO REPORT DISCREPANCIES AND INSTALLATION WITH FIELD CONDITIONS.
6. CONTRACTOR TO VERIFY THE EXISTING WORK AND TO REPORT DISCREPANCIES AND INSTALLATION WITH FIELD CONDITIONS.
7. CONTRACTOR TO VERIFY THE EXISTING WORK AND TO REPORT DISCREPANCIES AND INSTALLATION WITH FIELD CONDITIONS.
8. CONTRACTOR TO VERIFY THE EXISTING WORK AND TO REPORT DISCREPANCIES AND INSTALLATION WITH FIELD CONDITIONS.

RENOVATION KEYNOTES

1. REMOVE EXISTING SPACE TEMPORARY BRACKETS AND REINFORCEMENT. REINFORCEMENT TO BE INSTALLED TO MATCH EXISTING WORK AND TO BE CONSIDERED FOR THE REMOVAL OF EXISTING WORK.
2. REMOVE EXISTING SPACE TEMPORARY BRACKETS AND REINFORCEMENT. REINFORCEMENT TO BE INSTALLED TO MATCH EXISTING WORK AND TO BE CONSIDERED FOR THE REMOVAL OF EXISTING WORK.
3. REMOVE EXISTING SPACE TEMPORARY BRACKETS AND REINFORCEMENT. REINFORCEMENT TO BE INSTALLED TO MATCH EXISTING WORK AND TO BE CONSIDERED FOR THE REMOVAL OF EXISTING WORK.
4. REMOVE EXISTING SPACE TEMPORARY BRACKETS AND REINFORCEMENT. REINFORCEMENT TO BE INSTALLED TO MATCH EXISTING WORK AND TO BE CONSIDERED FOR THE REMOVAL OF EXISTING WORK.
5. REMOVE EXISTING SPACE TEMPORARY BRACKETS AND REINFORCEMENT. REINFORCEMENT TO BE INSTALLED TO MATCH EXISTING WORK AND TO BE CONSIDERED FOR THE REMOVAL OF EXISTING WORK.
6. REMOVE EXISTING SPACE TEMPORARY BRACKETS AND REINFORCEMENT. REINFORCEMENT TO BE INSTALLED TO MATCH EXISTING WORK AND TO BE CONSIDERED FOR THE REMOVAL OF EXISTING WORK.
7. REMOVE EXISTING SPACE TEMPORARY BRACKETS AND REINFORCEMENT. REINFORCEMENT TO BE INSTALLED TO MATCH EXISTING WORK AND TO BE CONSIDERED FOR THE REMOVAL OF EXISTING WORK.
8. REMOVE EXISTING SPACE TEMPORARY BRACKETS AND REINFORCEMENT. REINFORCEMENT TO BE INSTALLED TO MATCH EXISTING WORK AND TO BE CONSIDERED FOR THE REMOVAL OF EXISTING WORK.

Office of Construction and Facilities Management
 Department of Public Works
 5485 LE-93
 Drawing Number 01
 Drawing Number MH201
 Date 02/24/2017
 Drawn REM
 Check REM
 Approved Project Director DALE A. BACK, P.E.
 Date 02/24/2017
 Approved Project Director DALE A. BACK, P.E.

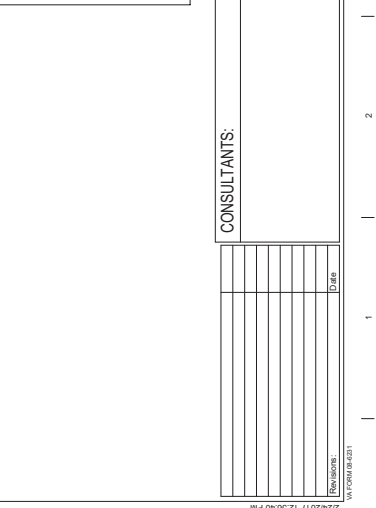
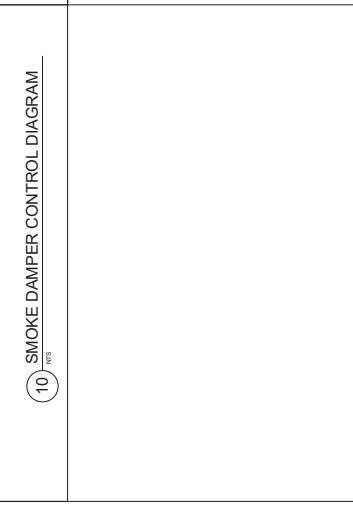
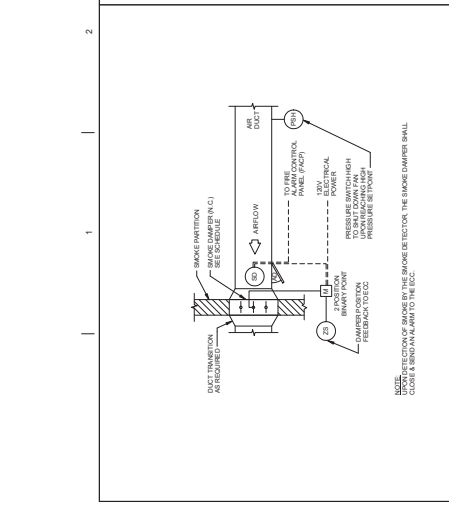
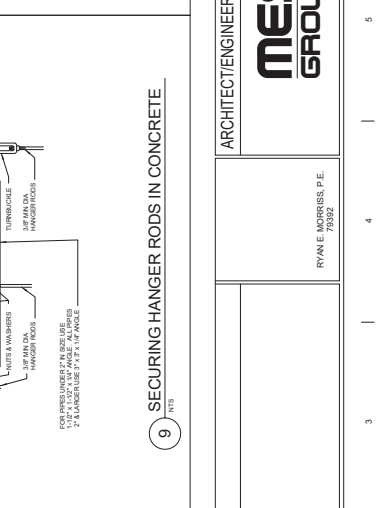
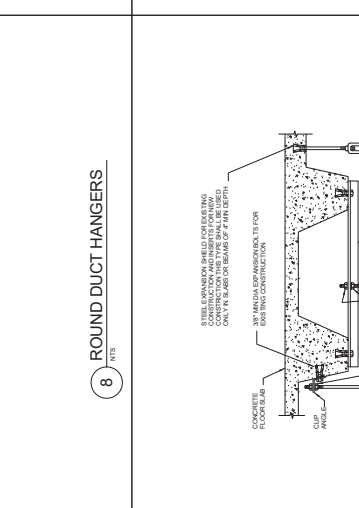
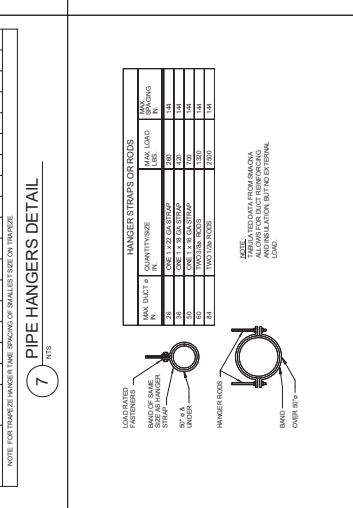
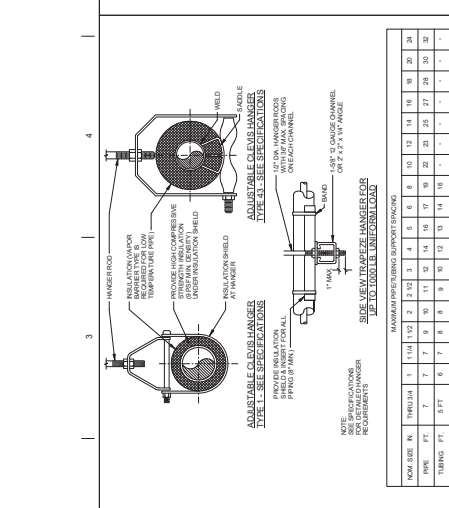
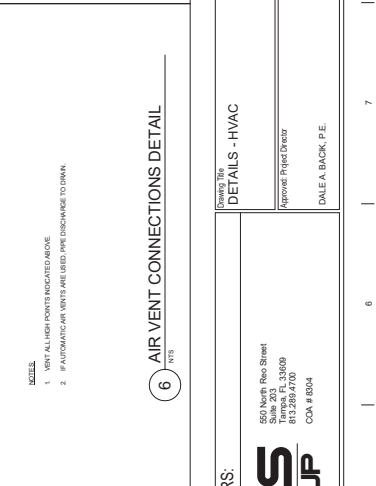
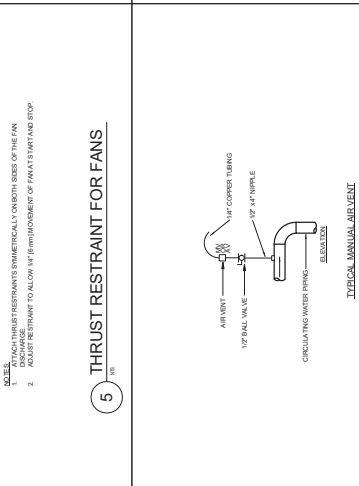
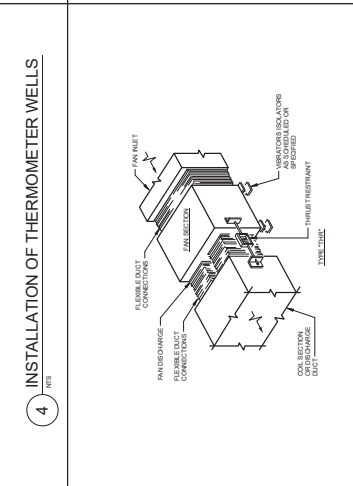
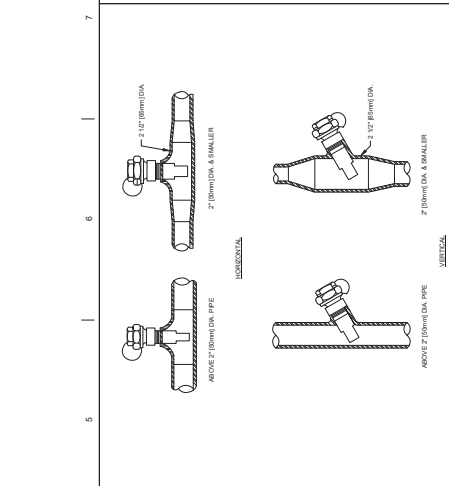
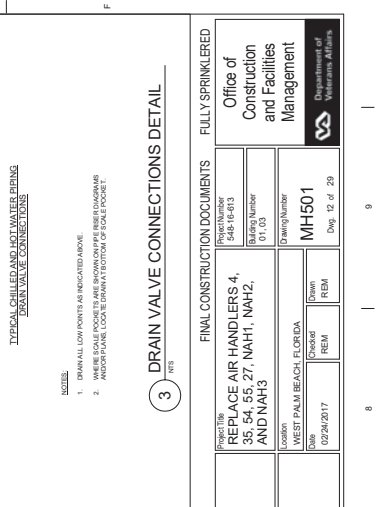
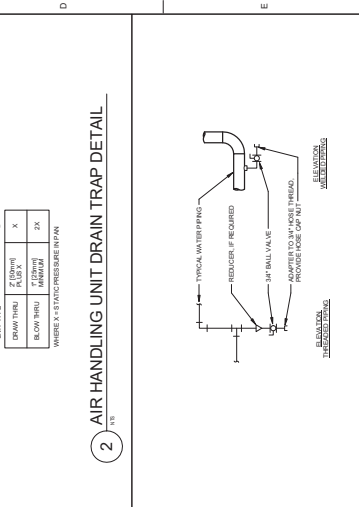
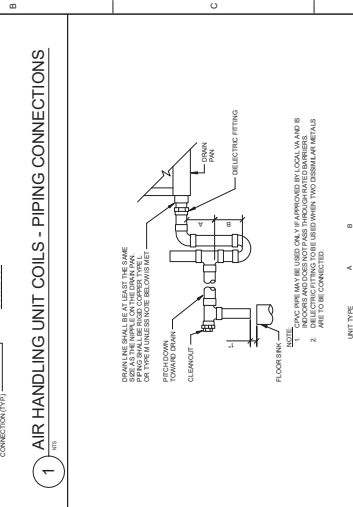
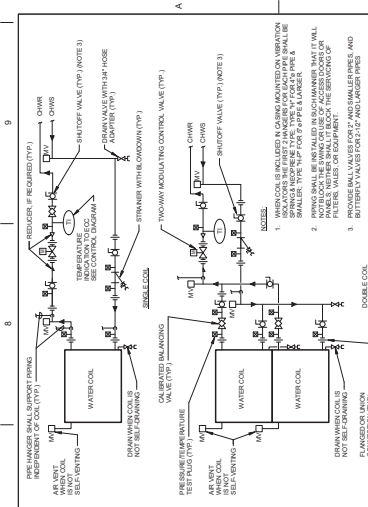
FINAL CONSTRUCTION DOCUMENTS FULLY SPRINKLERED

PROJECT: REPLACE AIR HANDLERS, 4, 5S, 5A, 55, 27, NAH1, NAH2, AND NAH3

ARCHITECT/ENGINEERS: MES GROUP

CONSULTANTS: RYAN E. MORRIS, P.E. 73024

DATE: 2/24/2017 12:56:39 PM



FINAL CONSTRUCTION DOCUMENTS

Office of Construction and Facilities Management

Project: REPLACE AIR HANDLERS, 4, 35, 54, 55, 27, NAH1, NAH2, AND NAH3

Sheet: MH501

Date: 02/24/2017

Scale: 1/8" = 1'-0"

Author: DALE A. BACK, P.E.

Check: RYM

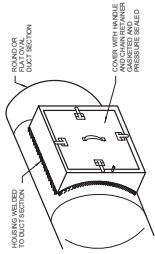
Revise: RYM

Draw: RYM

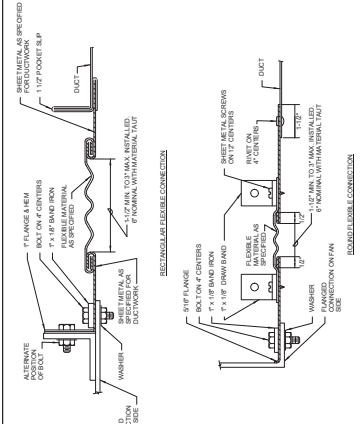
Project Number: 01.0.0

Sheet Number: MH501

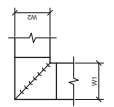
Page: 12 of 29



9 ACCESS SECTION FOR ROUND/OVAL DUCT

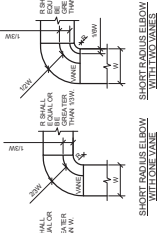


10 FLEXIBLE DUCT CONNECTIONS



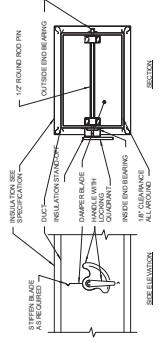
- NOTE:
1. ALL VANE ELBOWS SHALL BE CONSTRUCTED AND INSTALLED AS DETAIL AS SHOWN IN THIS DRAWING.
 2. THE VANE DO NOT CONTACT THE DUCT WALLS. VANE SPACING SHALL BE EQUAL TO VANE TYPE.
 3. ALL VANE THICKNESSES SHALL HAVE A MINIMUM OF 1/8" (2.5mm) MAXIMUM.
 4. VANE SPACING SHALL BE GREATER THAN 2" (50mm) UNLESS OTHERWISE SPECIFIED.
 5. VANE TYPE.

6 DUCTWORK SQUARE VANE ELBOWS



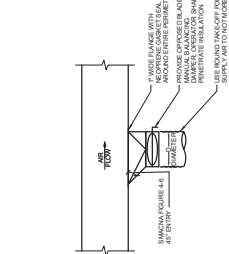
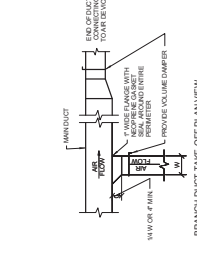
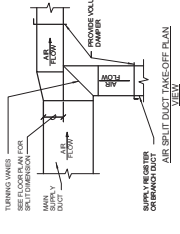
- NOTE:
1. THE INSIDE RADIUS OF ALL RADIUS ELBOWS SHALL BE MADE ROUND.
 2. SHORT RADIUS ELBOWS SHALL HAVE VANES. VANES SHALL BE CONSTRUCTED, SUPPORTED AND INSTALLED AS RECOMMENDED BY MANUFACTURER.

7 DUCTWORK RADIUS ELBOWS



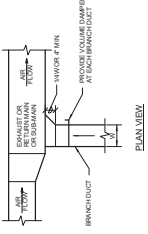
- NOTE:
1. DELETE INSULATION SPANDOFF ON DUCTWORK WITHOUT EXTERIOR INSULATION.
 2. DETAIL SHOWS SINGLE BLADE DAMPER. DAMPER INSTALLATION SHALL BE SIMILAR FOR ALL OTHER DAMPER TYPES AND SIZES.

8 VOLUME DAMPER DETAIL

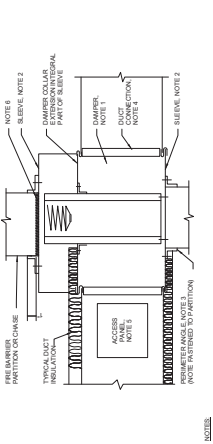


- NOTE:
1. TAKE OFF THE DEPTH OF THE TRUNK DUCTS SHALL BE MAINTAINED THROUGHOUT THE ENTIRE LENGTH OF THE BRANCH DUCT.
 2. INSULATION SHALL BE MAINTAINED THROUGHOUT THE ENTIRE LENGTH OF THE BRANCH DUCT.

4 DUCT TAKEOFF DETAILS

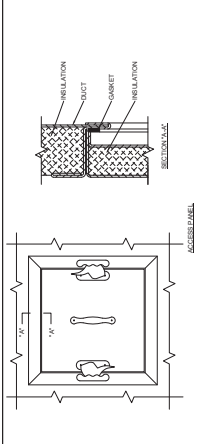


5 EXHAUST OR RETURN BRANCH DUCTWORK



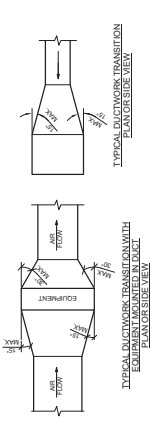
- NOTE:
1. A VERTICAL DAMPER IS SHOWN. HORIZONTAL DAMPER INSTALLATION IS SIMILAR. FOLLOW DAMPER MANUFACTURER'S INSTALLATION INSTRUCTIONS. DAMPER SHALL BE INSTALLED ON THE PARTITION OR WALL. THE DAMPER SHALL BE INSTALLED ON THE PARTITION OR WALL AND NOT TO THE PENETRATION.
 2. GALVANIZED SLEEVE CASE NOT LESS THAN CONCRETE. FASTEN TO DAMPER FRAME AND TO PENETRATION.
 3. DAMPER SHALL BE GALVANIZED STEEL. NOT LESS THAN 1/4" x 1/4" x 1/4" GAGE TO PROVIDE 1" MINIMUM OVERLAP OF DAMPER PANELS.
 4. BREAKAWAY CONNECTION. CONTRACTOR OPTION OF TYPES SHOWN IN BANDS.
 5. ACCESS PANELS. SIZE AND LOCATION TO PERMIT EASY REMOVAL OF DAMPER FOR MAINTENANCE.
 6. PROVIDE 1/4" TO 1/2" CLEARANCE ON HIGH AND WIDTH. FILL OPEN SPACE WITH ROCK WOOL FIBER INSULATION.
 7. ALL DUCTWORK INSULATION SHALL BE RATED FOR USE IN THE APPLICATION. INSULATION SHALL BE INSTALLED ON THE PARTITION OR WALL AND NOT TO THE PENETRATION.

1 FIRE DAMPER DETAIL



- NOTE:
1. ACCESS PANELS SHALL BE OF THE SAME TYPE TO THE DOOR TO WHICH THEY ARE ATTACHED.
 2. THE ACCESS PANEL SHALL BE INSTALLED ON THE PARTITION OR WALL AND NOT TO THE PENETRATION.
 3. USE ACCESS PANELS ON ALL EQUIPMENT AND DUCTWORK TO MAINTAIN ACCESS TO THE PARTITION OR WALL.
 4. USE ACCESS PANELS ON ALL EQUIPMENT AND DUCTWORK TO MAINTAIN ACCESS TO THE PARTITION OR WALL.

2 ACCESS PANEL AND DOOR DETAIL



- NOTE:
1. UNLESS OTHERWISE INDICATED ON PANS, MAXIMUM ANGLES SHOWN SHALL APPLY.

3 DUCTWORK TRANSITIONS DETAIL

CONSULTANTS:

Project No.	548-18-93
Drawn	01.03
Checked	02/24/2017
Scale	AS SHOWN
Project Name	REPLACE AIR HANDLERS 4, 35, 54, 55, 27, NAH1, NAH2, AND NAH3
Project Location	MESST PALM BEACH, FLORIDA
Project No.	MH502
Project Date	02/24/2017
Project Status	REM
Project Manager	DALE A. BACK, P.E.

ARCHITECT/ENGINEERS:

MES GROUP

550 North Red Street
 Suite 203
 Palm Beach, FL 33409
 813.259.4700
 COA # 8004

RYAN E. MORRIS, P.E.
 7392

FINAL CONSTRUCTION DOCUMENTS

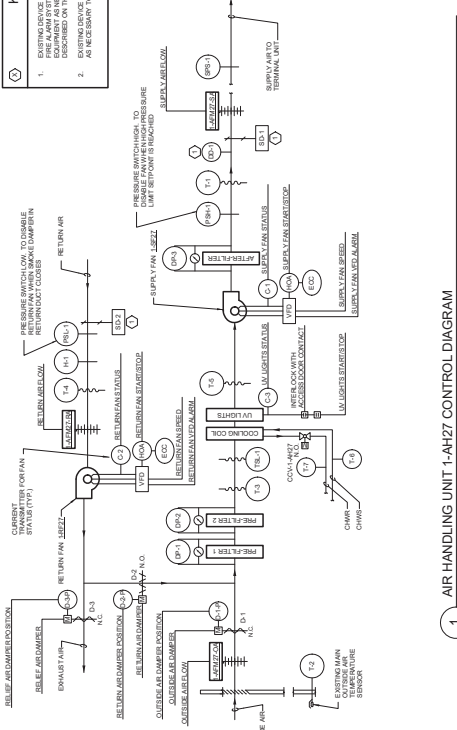
Office of Construction and Facilities Management

Department of Transportation

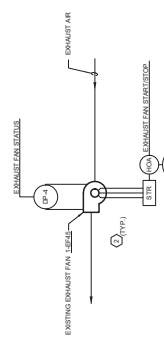
2/24/2017 12:56:42 PM

KEYNOTES

- 1. SUPPLY FAN SHALL BE...
2. RETURN FAN SHALL BE...
3. EXISTING DEVICES TO BE REUSED...
4. AS NECESSARY TO INTERLOCK WITH NEW EQUIPMENT.



1 AIR HANDLING UNIT 1-AH27 CONTROL DIAGRAM



2 EXISTING EXHAUST FAN CONTROL DIAGRAMS

Table with 10 columns: POINT TAG, POINT DESCRIPTION, UNITS, POINT TYPE, SERVICES, NOTES. Contains detailed control points for the AHU system.

Table with 2 columns: GENERAL NOTE and CONTROLS ABBREVIATIONS. Lists various control symbols and their meanings.

1-AH27 SEQUENCE OF OPERATION

- 1. GENERAL
2. SUPPLY FAN START
3. RETURN FAN START
4. MODE CHANGE
5. FILTER PRESSURE
6. COIL TEMPERATURE
7. TEMPERATURE CONTROL
8. COOLING COIL LEAKAGE
9. COOLING COIL LEAKAGE
10. COOLING COIL LEAKAGE

Project information including: ARCHITECT/ENGINEERS: MES GROUP; CONSULTANTS: RYAN E. MORRIS, P.E.; Office of Construction and Facilities Management; MH602; Date: 02/24/2017.

ABBREVIATIONS

Table with 2 columns: Abbreviation and Description. Includes terms like AMT, ALT, ALN, etc.

ELECTRICAL SYMBOLS & SCHEDULE

Table with 2 columns: Symbol and Description. Includes symbols for switches, relays, and other electrical components.

ELECTRICAL DEVICES

Table with 2 columns: Device Name and Description. Lists various electrical devices like switches, relays, and detectors.

POWER DISTRIBUTION

Table with 2 columns: Device Name and Description. Lists power distribution components like transformers and busbars.

GENERAL NOTES

- List of general notes regarding electrical installation, including notes on panel locations, equipment, and safety.

GENERAL SYMBOLS

- List of general symbols used in the drawings, including symbols for conductors and equipment.

ELECTRICAL DEVICES

- List of electrical devices and their corresponding symbols, including switches and relays.

POWER DISTRIBUTION

- List of power distribution components and their symbols, including transformers and busbars.

GENERAL NOTES

- Continuation of general notes regarding electrical installation.

GENERAL SYMBOLS

- Continuation of general symbols used in the drawings.

ELECTRICAL DEVICES

- Continuation of electrical devices and their symbols.

POWER DISTRIBUTION

- Continuation of power distribution components and their symbols.

GENERAL NOTES

- Continuation of general notes regarding electrical installation.

GENERAL SYMBOLS

- Continuation of general symbols used in the drawings.

ELECTRICAL DEVICES

- Continuation of electrical devices and their symbols.

POWER DISTRIBUTION

- Continuation of power distribution components and their symbols.

GENERAL NOTES

- Continuation of general notes regarding electrical installation.

GENERAL SYMBOLS

- Continuation of general symbols used in the drawings.

ELECTRICAL DEVICES

- Continuation of electrical devices and their symbols.

POWER DISTRIBUTION

- Continuation of power distribution components and their symbols.

GENERAL NOTES

- Continuation of general notes regarding electrical installation.

GENERAL SYMBOLS

- Continuation of general symbols used in the drawings.

ELECTRICAL DEVICES

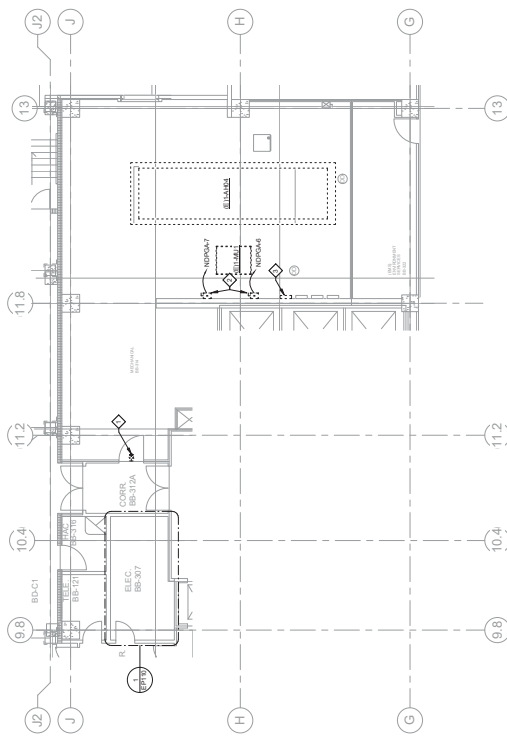
- Continuation of electrical devices and their symbols.

POWER DISTRIBUTION

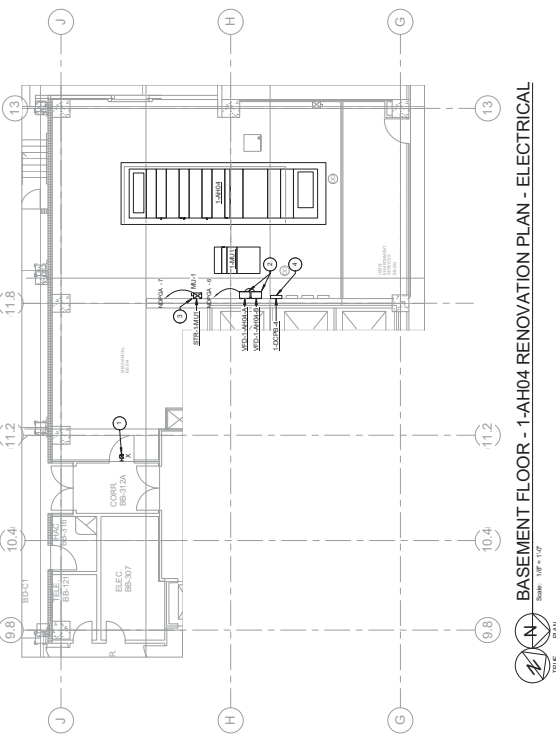
- Continuation of power distribution components and their symbols.

- ◇ DEMOLITION KEYNOTES**
- ITEMS TO BE DEMOLISHED ARE IDENTIFIED BY KEYNOTES ON THIS DRAWING FOR REFERENCE ONLY.
 - DEMOLITION SHALL BE PERFORMED IN ACCORDANCE WITH THE CITY OF PALM BEACH COUNTY ORDINANCE 15.06 AND ALL APPLICABLE CODES, STANDARDS, AND REGULATIONS.
 - DEMOLITION SHALL BE PERFORMED IN ACCORDANCE WITH THE CITY OF PALM BEACH COUNTY ORDINANCE 15.06 AND ALL APPLICABLE CODES, STANDARDS, AND REGULATIONS.
 - DEMOLITION SHALL BE PERFORMED IN ACCORDANCE WITH THE CITY OF PALM BEACH COUNTY ORDINANCE 15.06 AND ALL APPLICABLE CODES, STANDARDS, AND REGULATIONS.
 - DEMOLITION SHALL BE PERFORMED IN ACCORDANCE WITH THE CITY OF PALM BEACH COUNTY ORDINANCE 15.06 AND ALL APPLICABLE CODES, STANDARDS, AND REGULATIONS.

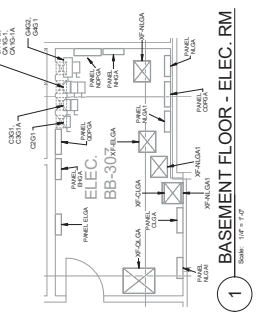
- RENOVATION KEYNOTES**
- INDICATED BY KEYNOTES ON THIS DRAWING.
 - ITEMS TO BE RENOVATED ARE IDENTIFIED BY KEYNOTES ON THIS DRAWING FOR REFERENCE ONLY.
 - RENOVATION SHALL BE PERFORMED IN ACCORDANCE WITH THE CITY OF PALM BEACH COUNTY ORDINANCE 15.06 AND ALL APPLICABLE CODES, STANDARDS, AND REGULATIONS.
 - RENOVATION SHALL BE PERFORMED IN ACCORDANCE WITH THE CITY OF PALM BEACH COUNTY ORDINANCE 15.06 AND ALL APPLICABLE CODES, STANDARDS, AND REGULATIONS.
 - RENOVATION SHALL BE PERFORMED IN ACCORDANCE WITH THE CITY OF PALM BEACH COUNTY ORDINANCE 15.06 AND ALL APPLICABLE CODES, STANDARDS, AND REGULATIONS.



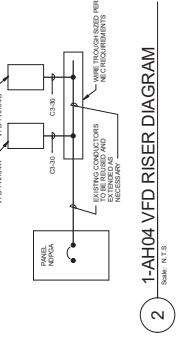
1 BASEMENT FLOOR - 1-AH04 DEMOLITION PLAN - ELECTRICAL
Scale: 1/8" = 1'-0"



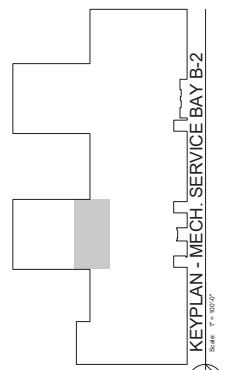
BASEMENT FLOOR - 1-AH04 RENOVATION PLAN - ELECTRICAL
Scale: 1/8" = 1'-0"



1 BASEMENT FLOOR - ELEC. RM.
Scale: 1/8" = 1'-0"



1-AH04 VFD RISER DIAGRAM
Scale: 1/8" = 1'-0"



KEYPLAN - MECH. SERVICE BAY B-2
Scale: 1/8" = 1'-0"

CONSULTANTS:

ARCHITECT/ENGINEERS: MES GROUP
560 North Reef Street, Suite 300, West Palm Beach, FL 33409
Phone: 561.239.4700, Fax: 561.239.4700, CCA # 8004

APPROVE: DALE A. BACK, P.E.

DESIGNER: NICHOLAS G. BERNALES, P.E.
7/2024

DATE: 02/24/2017

PROJECT NUMBER: 548-18-013

REVISION NUMBER: 01

DRAWING NUMBER: EP110

DATE: 02/24/2017

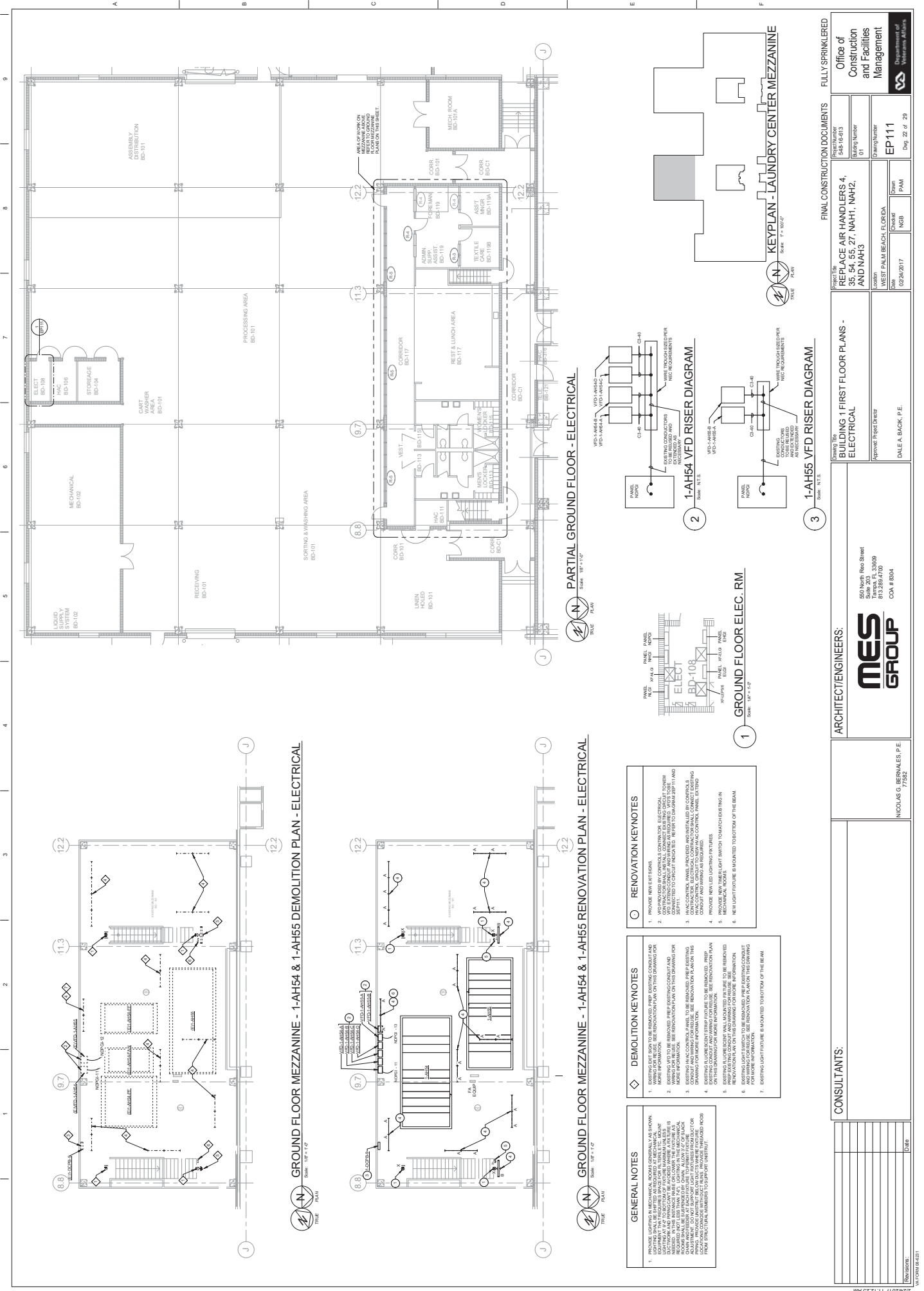
DRAWN BY: NGB

CHECKED BY: PAM

FINAL CONSTRUCTION DOCUMENTS

FULLY SPRINKLERED

OFFICE OF CONSTRUCTION AND FACILITIES MANAGEMENT
DEPARTMENT OF PUBLIC WORKS



GROUND FLOOR MEZZANINE - 1-AH54 & 1-AH55 DEMOLITION PLAN - ELECTRICAL
 Scale: 1/8" = 1'-0"
 DATE: 02/24/2017

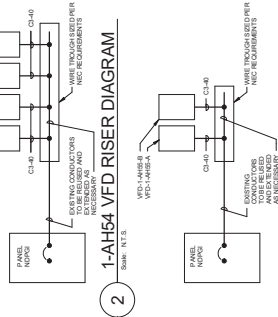
GROUND FLOOR MEZZANINE - 1-AH54 & 1-AH55 RENOVATION PLAN - ELECTRICAL
 Scale: 1/8" = 1'-0"
 DATE: 02/24/2017

- GENERAL NOTES**
- EXISTING LIGHT FIXTURES SHALL BE REMOVED AND DISPOSED AT CONTRACTOR'S RISK. NEW LIGHT FIXTURES SHALL BE INSTALLED AS SHOWN.
 - EXISTING LIGHT FIXTURES SHALL BE REMOVED AND DISPOSED AT CONTRACTOR'S RISK. NEW LIGHT FIXTURES SHALL BE INSTALLED AS SHOWN.
 - EXISTING LIGHT FIXTURES SHALL BE REMOVED AND DISPOSED AT CONTRACTOR'S RISK. NEW LIGHT FIXTURES SHALL BE INSTALLED AS SHOWN.
 - EXISTING LIGHT FIXTURES SHALL BE REMOVED AND DISPOSED AT CONTRACTOR'S RISK. NEW LIGHT FIXTURES SHALL BE INSTALLED AS SHOWN.
 - EXISTING LIGHT FIXTURES SHALL BE REMOVED AND DISPOSED AT CONTRACTOR'S RISK. NEW LIGHT FIXTURES SHALL BE INSTALLED AS SHOWN.
 - EXISTING LIGHT FIXTURES SHALL BE REMOVED AND DISPOSED AT CONTRACTOR'S RISK. NEW LIGHT FIXTURES SHALL BE INSTALLED AS SHOWN.
 - EXISTING LIGHT FIXTURES SHALL BE REMOVED AND DISPOSED AT CONTRACTOR'S RISK. NEW LIGHT FIXTURES SHALL BE INSTALLED AS SHOWN.

- DEMOLITION KEYNOTES**
- EXISTING LIGHT FIXTURES SHALL BE REMOVED AND DISPOSED AT CONTRACTOR'S RISK.
 - EXISTING LIGHT FIXTURES SHALL BE REMOVED AND DISPOSED AT CONTRACTOR'S RISK.
 - EXISTING LIGHT FIXTURES SHALL BE REMOVED AND DISPOSED AT CONTRACTOR'S RISK.
 - EXISTING LIGHT FIXTURES SHALL BE REMOVED AND DISPOSED AT CONTRACTOR'S RISK.
 - EXISTING LIGHT FIXTURES SHALL BE REMOVED AND DISPOSED AT CONTRACTOR'S RISK.
 - EXISTING LIGHT FIXTURES SHALL BE REMOVED AND DISPOSED AT CONTRACTOR'S RISK.
 - EXISTING LIGHT FIXTURES SHALL BE REMOVED AND DISPOSED AT CONTRACTOR'S RISK.

- RENOVATION KEYNOTES**
- PROVIDE NEW SWITCHES.
 - CONTRACTOR SHALL VERIFY ALL ELECTRICAL WORK IS IN ACCORDANCE WITH ALL LOCAL AND STATE CODES. ALL WORK SHALL BE IN ACCORDANCE WITH ALL LOCAL AND STATE CODES.
 - ALL ELECTRICAL WORK SHALL BE IN ACCORDANCE WITH ALL LOCAL AND STATE CODES.
 - ALL ELECTRICAL WORK SHALL BE IN ACCORDANCE WITH ALL LOCAL AND STATE CODES.
 - ALL ELECTRICAL WORK SHALL BE IN ACCORDANCE WITH ALL LOCAL AND STATE CODES.
 - ALL ELECTRICAL WORK SHALL BE IN ACCORDANCE WITH ALL LOCAL AND STATE CODES.
 - ALL ELECTRICAL WORK SHALL BE IN ACCORDANCE WITH ALL LOCAL AND STATE CODES.

PARTIAL GROUND FLOOR - ELECTRICAL
 Scale: 1/8" = 1'-0"
 DATE: 02/24/2017

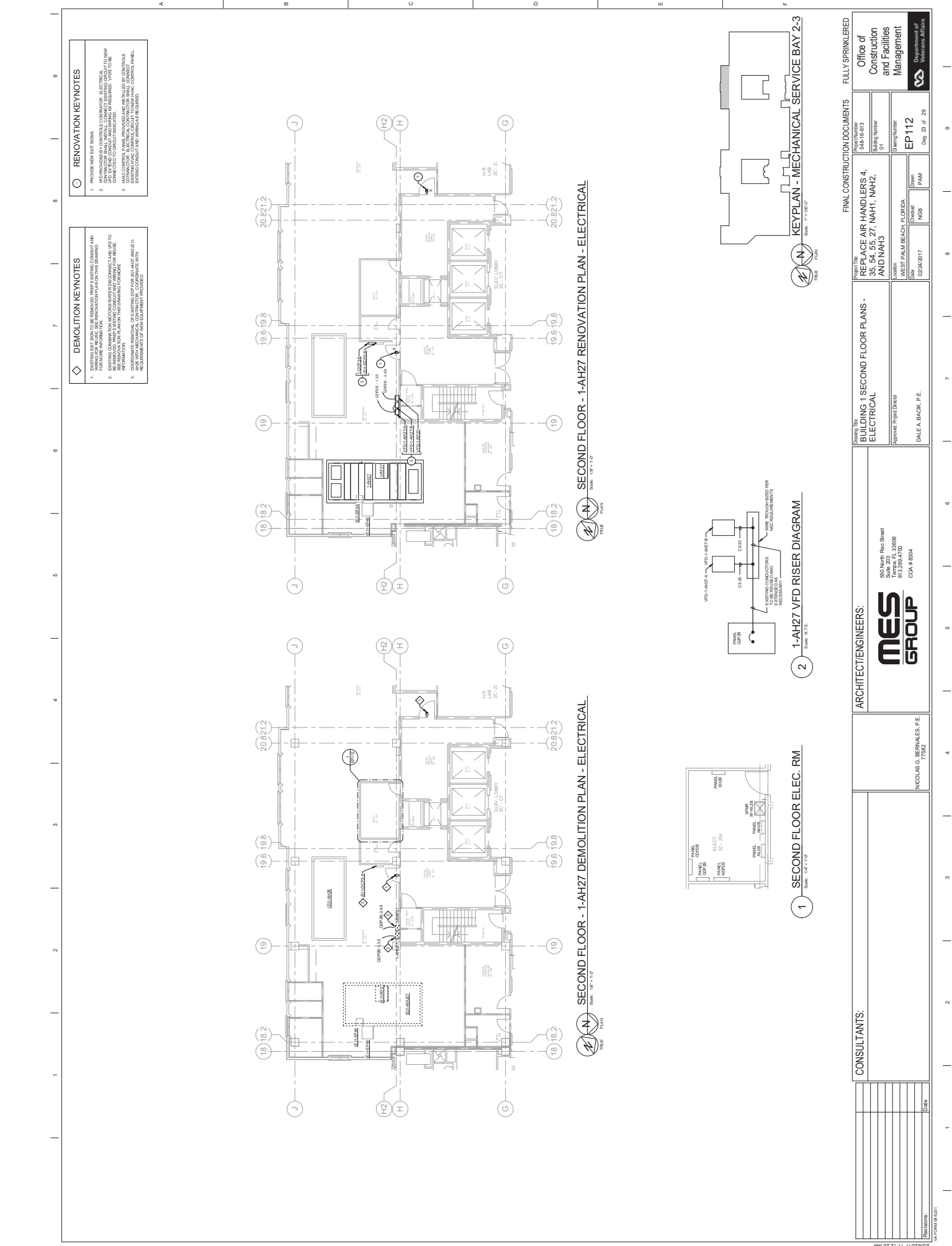


1-AH54 VFD RISER DIAGRAM
 Scale: N.T.S.
 DATE: 02/24/2017

1-AH55 VFD RISER DIAGRAM
 Scale: N.T.S.
 DATE: 02/24/2017

GROUND FLOOR ELEC. RM.
 Scale: 1/8" = 1'-0"
 DATE: 02/24/2017

CONSULTANTS: NICHOLAS G. BERNALES, P.E. 7/2024		ARCHITECT/ENGINEERS: MES GROUP 550 North Rice Street Suite 203 Dallas, TX 75208 817.259.4700 COA # 8004		APPROVER: DALE A. BACK, P.E.	
PROJECT: REPLACE AIR HANDLERS 4, 35, 54, 55, 27, NAH1, NAH2, AND NAH3		PROJECT NUMBER: EP111		DATE: 02/24/2017	
CLIENT: WEST PALM BEACH, FL ORDA		CLIENT NUMBER: NGB		CLIENT ADDRESS: PAM	
DESIGNER: 548-18-93		DRAWN BY: NGB		CHECKED BY: PAM	
DATE: 01		SCALE: AS SHOWN		PROJECT LOCATION: WEST PALM BEACH, FL ORDA	
DATE: 01		SCALE: AS SHOWN		PROJECT LOCATION: WEST PALM BEACH, FL ORDA	
DATE: 01		SCALE: AS SHOWN		PROJECT LOCATION: WEST PALM BEACH, FL ORDA	
DATE: 01		SCALE: AS SHOWN		PROJECT LOCATION: WEST PALM BEACH, FL ORDA	
DATE: 01		SCALE: AS SHOWN		PROJECT LOCATION: WEST PALM BEACH, FL ORDA	
DATE: 01		SCALE: AS SHOWN		PROJECT LOCATION: WEST PALM BEACH, FL ORDA	



DEMOLITION KEYNOTES

- REMOVE EXISTING EQUIPMENT AND PROVIDE DEMOLITION INFORMATION FOR THE CONTRACTOR TO BE DEMOLISHED. PROVIDE DEMOLITION INFORMATION FOR THE CONTRACTOR TO BE DEMOLISHED.
- BE DEMOLISHED IN THE CORRECT SEQUENCE AND IN THE CORRECT ORDER OF DEMOLITION. PROVIDE DEMOLITION INFORMATION FOR THE CONTRACTOR TO BE DEMOLISHED.
- DEMOLITION OF EQUIPMENT SHALL BE IN ACCORDANCE WITH THE REQUIREMENTS OF THE EQUIPMENT MANUFACTURER'S MANUAL AND THE REQUIREMENTS OF THE NATIONAL ELECTRICAL CODE (NEC).

RENOVATION KEYNOTES

- PROVIDE NEW EXISTING EQUIPMENT AND PROVIDE DEMOLITION INFORMATION FOR THE CONTRACTOR TO BE DEMOLISHED. PROVIDE DEMOLITION INFORMATION FOR THE CONTRACTOR TO BE DEMOLISHED.
- BE DEMOLISHED IN THE CORRECT SEQUENCE AND IN THE CORRECT ORDER OF DEMOLITION. PROVIDE DEMOLITION INFORMATION FOR THE CONTRACTOR TO BE DEMOLISHED.
- DEMOLITION OF EQUIPMENT SHALL BE IN ACCORDANCE WITH THE REQUIREMENTS OF THE EQUIPMENT MANUFACTURER'S MANUAL AND THE REQUIREMENTS OF THE NATIONAL ELECTRICAL CODE (NEC).

SECOND FLOOR - 1-AH27 RENOVATION PLAN - ELECTRICAL
Scale: 1/8" = 1'-0"

SECOND FLOOR - 1-AH27 DEMOLITION PLAN - ELECTRICAL
Scale: 1/8" = 1'-0"

1-AH27 VFD RISER DIAGRAM
Scale: 1/2" = 1'-0"

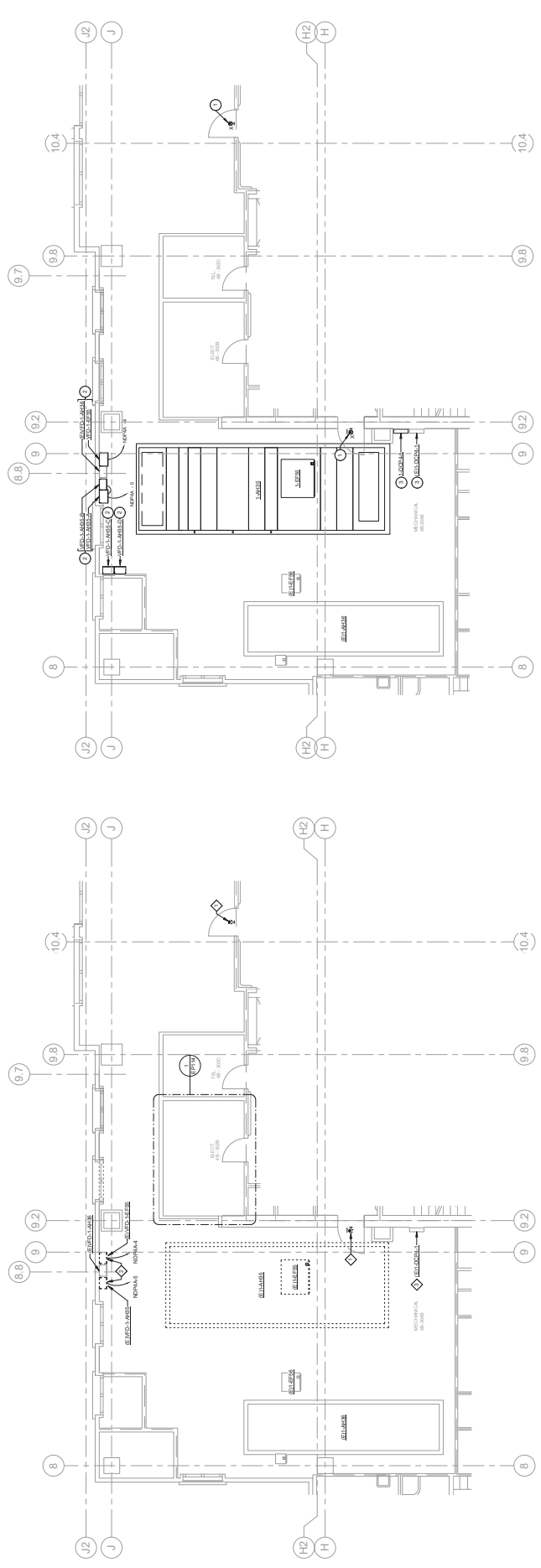
SECOND FLOOR ELEC. RM.
Scale: 1/8" = 1'-0"

KEYPLAN - MECHANICAL SERVICE BAY 2-3
Scale: 1" = 1'-0"

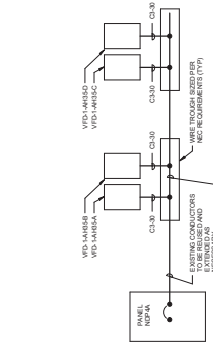
CONSULTANTS:		ARCHITECT/ENGINEERS:		FINAL CONSTRUCTION DOCUMENTS	
NICHOLAS G. BERNALES, P.E. 7/2024		MES GROUP 550 North Red Street Suite 200 Ft. Lauderdale, FL 33469 Phone: 813.259.4700 COA # 8304		REPLACE AIR HANDLERS 4, 5, 5A, 55, 27, NAH1, NAH2, AND NAH3 Project Number: 548-18-03 Drawing Number: 01 Date: 02/24/2017 Designer: NGB Checker: PAM Drawn: PAM	
DALE A. BACK, P.E.		Approved Project Director: DALE A. BACK, P.E.		Department of Public Works EP112 Page 23 of 29	

- RENOVATION KEYNOTES**
1. PROVIDE NEW EXPOSED CONDUIT AND CONDUIT RINGS TO BE INSTALLED IN CONFORMANCE WITH THE NATIONAL ELECTRICAL CODE (NEC) AND THE NATIONAL FIRE PROTECTION ASSOCIATION (NFPA) 70B. REFER TO DRAWING SHEET 14-1000 FOR CONDUIT AND CONDUIT RING SCHEDULES.
 2. PROVIDE NEW EXPOSED CONDUIT AND CONDUIT RINGS TO BE INSTALLED IN CONFORMANCE WITH THE NATIONAL ELECTRICAL CODE (NEC) AND THE NATIONAL FIRE PROTECTION ASSOCIATION (NFPA) 70B. REFER TO DRAWING SHEET 14-1000 FOR CONDUIT AND CONDUIT RING SCHEDULES.
 3. COORDINATE REMOVAL OF EXISTING CONDUIT FOR 480V AND 480V/277V WITH THE ELECTRICAL CONTRACTOR. REFER TO DRAWING SHEET 14-1000 FOR CONDUIT AND CONDUIT RING SCHEDULES.

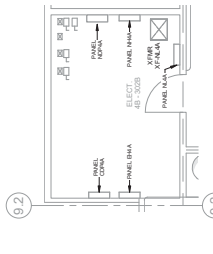
- DEMOLITION KEYNOTES**
1. DEMOLITION OF EXISTING CONDUIT AND CONDUIT RINGS TO BE INSTALLED IN CONFORMANCE WITH THE NATIONAL ELECTRICAL CODE (NEC) AND THE NATIONAL FIRE PROTECTION ASSOCIATION (NFPA) 70B. REFER TO DRAWING SHEET 14-1000 FOR CONDUIT AND CONDUIT RING SCHEDULES.
 2. DEMOLITION OF EXISTING CONDUIT AND CONDUIT RINGS TO BE INSTALLED IN CONFORMANCE WITH THE NATIONAL ELECTRICAL CODE (NEC) AND THE NATIONAL FIRE PROTECTION ASSOCIATION (NFPA) 70B. REFER TO DRAWING SHEET 14-1000 FOR CONDUIT AND CONDUIT RING SCHEDULES.
 3. DEMOLITION OF EXISTING CONDUIT AND CONDUIT RINGS TO BE INSTALLED IN CONFORMANCE WITH THE NATIONAL ELECTRICAL CODE (NEC) AND THE NATIONAL FIRE PROTECTION ASSOCIATION (NFPA) 70B. REFER TO DRAWING SHEET 14-1000 FOR CONDUIT AND CONDUIT RING SCHEDULES.



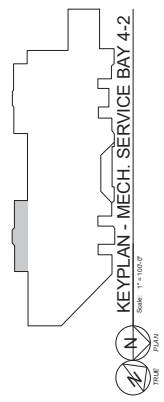
FOURTH FLOOR - 1-AH35 RENOVATION PLAN - ELECTRICAL
Scale: 3/16" = 1'-0"



1-AH35 VFD RISER DIAGRAM
Scale: N.E.S.



FOURTH FLOOR ELEC. RM
Scale: 1/4" = 1'-0"



CONSULTANTS:

Project No.	55-54-55-27-NAH1, NAH2, AND NAH3
Project Name	REPLACE AIR HANDLERS 4, 55-54-55-27-NAH1, NAH2, AND NAH3
Project Location	WEST PALM BEACH, FLORIDA
Project Date	02/24/2017
Project Manager	DALE A. BACK, P.E.
Project Engineer	DALE A. BACK, P.E.

ARCHITECT/ENGINEERS:

MES GROUP
550 North Red Street
Suite 203
West Palm Beach, FL 33409
Phone: 561.259.4700
Fax: 561.259.4700
COA # 8004

CONSULTANTS:

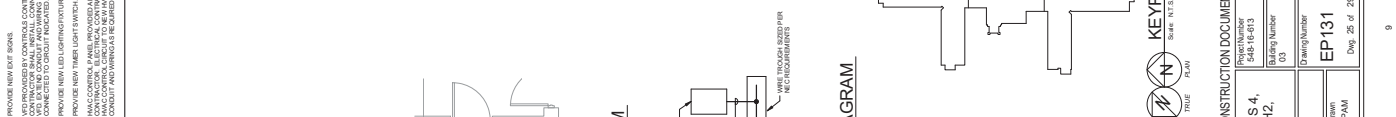
NICHOLAS G. BERNALES, P.E.
7752

FINAL CONSTRUCTION DOCUMENTS

FULLY SPRINKLERED

Office of Construction and Facilities Management
Department of Public Works

2/24/2017 11:12:28 AM

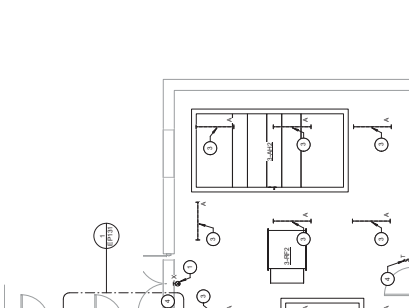


GENERAL NOTES

- REMOVE ALL ITEMS WHICH ARE NOT SHOWN. ALL LIGHTING SHALL BE SUPPLEMENTED AS REQUIRED AT MECHANICAL ROOMS TO MAINTAIN 10 FC TO THE WORK AREA AS REQUIRED. IN THE MECHANICAL ROOMS OR LOWER THE WORK AREA AS REQUIRED. ALL MECHANICAL ROOMS SHALL BE KEPT OPEN. ALLOW AT LEAST 30% FREE ACCESS TO ALL MECHANICAL ROOMS FROM ALL ENTRANCES AND EXITS. ALL MECHANICAL ROOMS SHALL BE KEPT OPEN TO MAINTAIN 10 FC FROM STRUCTURAL MEMBERS TO SUPPORTS AT ALL TIMES.

DEMOLITION KEYNOTES

- EXISTING LIGHTING TO BE REMOVED. PREP SEE DRAWING FOR MORE INFORMATION.
- EXISTING LIGHTING TO BE REMOVED. PREP SEE DRAWING FOR MORE INFORMATION.
- EXISTING LIGHTING TO BE REMOVED. PREP SEE DRAWING FOR MORE INFORMATION.
- EXISTING LIGHTING TO BE REMOVED. PREP SEE DRAWING FOR MORE INFORMATION.
- EXISTING LIGHTING TO BE REMOVED. PREP SEE DRAWING FOR MORE INFORMATION.



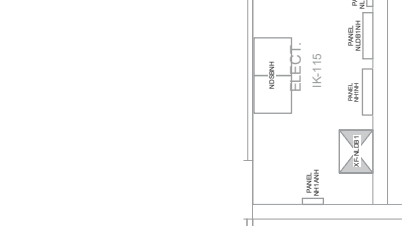
BUILDING 3 - 3-AH2 & 3-AH3 DEMOLITION PLAN - ELECTRICAL
Scale: 3/8" = 1'-0"

DEMOLITION KEYNOTES

- EXISTING LIGHTING TO BE REMOVED. PREP SEE DRAWING FOR MORE INFORMATION.
- EXISTING LIGHTING TO BE REMOVED. PREP SEE DRAWING FOR MORE INFORMATION.
- EXISTING LIGHTING TO BE REMOVED. PREP SEE DRAWING FOR MORE INFORMATION.
- EXISTING LIGHTING TO BE REMOVED. PREP SEE DRAWING FOR MORE INFORMATION.
- EXISTING LIGHTING TO BE REMOVED. PREP SEE DRAWING FOR MORE INFORMATION.

RENOVATION KEYNOTES

- PROVIDE NEW ELEC BOXES.
- CONNECTOR SHALL BE INSTALLED. CONNECT TO EXISTING CIRCUIT TO NEW ELEC BOXES. REFER TO DRAWING SCHEDULES FOR MORE INFORMATION.
- PROVIDE NEW LIGHTING FIXTURES.
- PROVIDE NEW LIGHT SWITCHES.
- CONNECTIONS TO EXISTING ELECTRICAL SYSTEMS SHALL BE MADE IN THE ELECTRICAL CONTROL PANEL. EXISTING ELECTRICAL SYSTEM SHALL BE KEPT OPEN TO MAINTAIN 10 FC FROM STRUCTURAL MEMBERS TO SUPPORTS AT ALL TIMES.



BUILDING 3 - 3-AH1 RENOVATION PLAN - ELECTRICAL
Scale: 1/8" = 1'-0"



3-AH1 VFD RISER DIAGRAM
Scale: N.T.S.



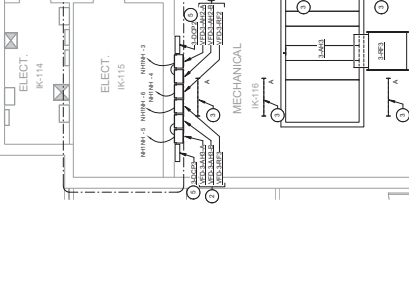
KEYPLAN BUILDING 3
Scale: N.T.S.

GENERAL NOTES

- REMOVE ALL ITEMS WHICH ARE NOT SHOWN. ALL LIGHTING SHALL BE SUPPLEMENTED AS REQUIRED AT MECHANICAL ROOMS TO MAINTAIN 10 FC TO THE WORK AREA AS REQUIRED. IN THE MECHANICAL ROOMS OR LOWER THE WORK AREA AS REQUIRED. ALL MECHANICAL ROOMS SHALL BE KEPT OPEN. ALLOW AT LEAST 30% FREE ACCESS TO ALL MECHANICAL ROOMS FROM ALL ENTRANCES AND EXITS. ALL MECHANICAL ROOMS SHALL BE KEPT OPEN TO MAINTAIN 10 FC FROM STRUCTURAL MEMBERS TO SUPPORTS AT ALL TIMES.

DEMOLITION KEYNOTES

- EXISTING LIGHTING TO BE REMOVED. PREP SEE DRAWING FOR MORE INFORMATION.
- EXISTING LIGHTING TO BE REMOVED. PREP SEE DRAWING FOR MORE INFORMATION.
- EXISTING LIGHTING TO BE REMOVED. PREP SEE DRAWING FOR MORE INFORMATION.
- EXISTING LIGHTING TO BE REMOVED. PREP SEE DRAWING FOR MORE INFORMATION.
- EXISTING LIGHTING TO BE REMOVED. PREP SEE DRAWING FOR MORE INFORMATION.



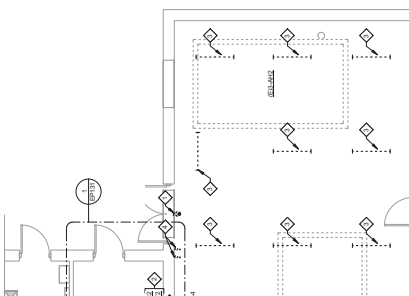
BUILDING 3 - 3-AH1 DEMOLITION PLAN - ELECTRICAL
Scale: 3/8" = 1'-0"

GENERAL NOTES

- REMOVE ALL ITEMS WHICH ARE NOT SHOWN. ALL LIGHTING SHALL BE SUPPLEMENTED AS REQUIRED AT MECHANICAL ROOMS TO MAINTAIN 10 FC TO THE WORK AREA AS REQUIRED. IN THE MECHANICAL ROOMS OR LOWER THE WORK AREA AS REQUIRED. ALL MECHANICAL ROOMS SHALL BE KEPT OPEN. ALLOW AT LEAST 30% FREE ACCESS TO ALL MECHANICAL ROOMS FROM ALL ENTRANCES AND EXITS. ALL MECHANICAL ROOMS SHALL BE KEPT OPEN TO MAINTAIN 10 FC FROM STRUCTURAL MEMBERS TO SUPPORTS AT ALL TIMES.

DEMOLITION KEYNOTES

- EXISTING LIGHTING TO BE REMOVED. PREP SEE DRAWING FOR MORE INFORMATION.
- EXISTING LIGHTING TO BE REMOVED. PREP SEE DRAWING FOR MORE INFORMATION.
- EXISTING LIGHTING TO BE REMOVED. PREP SEE DRAWING FOR MORE INFORMATION.
- EXISTING LIGHTING TO BE REMOVED. PREP SEE DRAWING FOR MORE INFORMATION.
- EXISTING LIGHTING TO BE REMOVED. PREP SEE DRAWING FOR MORE INFORMATION.



BUILDING 3 - 3-AH2 & 3-AH3 RENOVATION PLAN - ELECTRICAL
Scale: 3/8" = 1'-0"



3-AH1 VFD RISER DIAGRAM
Scale: N.T.S.



KEYPLAN BUILDING 3
Scale: N.T.S.

REVISIONS	DATE	DESCRIPTION

CONSULTANTS:

NICHOLAS G. BERNALES, P.E.
7/16/24

ARCHITECT/ENGINEERS:

MES GROUP

550 North Red Street
Suite 303
Tampa, FL 33609
Phone: 813.289.4700
COA # 8004

APPROVED PROJECT OWNER:

DALE A. BACIK, P.E.

REVISIONS	DATE	DESCRIPTION

PROJECT:
REPLACE AIR HANDLERS, 4, 35, 54, 55, 27, NAH1, NAH2, AND NAH3

OWNER:
MESTET PALM BEACH, FLORIDA

DATE:
02/24/2017

PROJECT NUMBER:
EP131

DRAWN BY:
NSB

CHECKED BY:
PAM

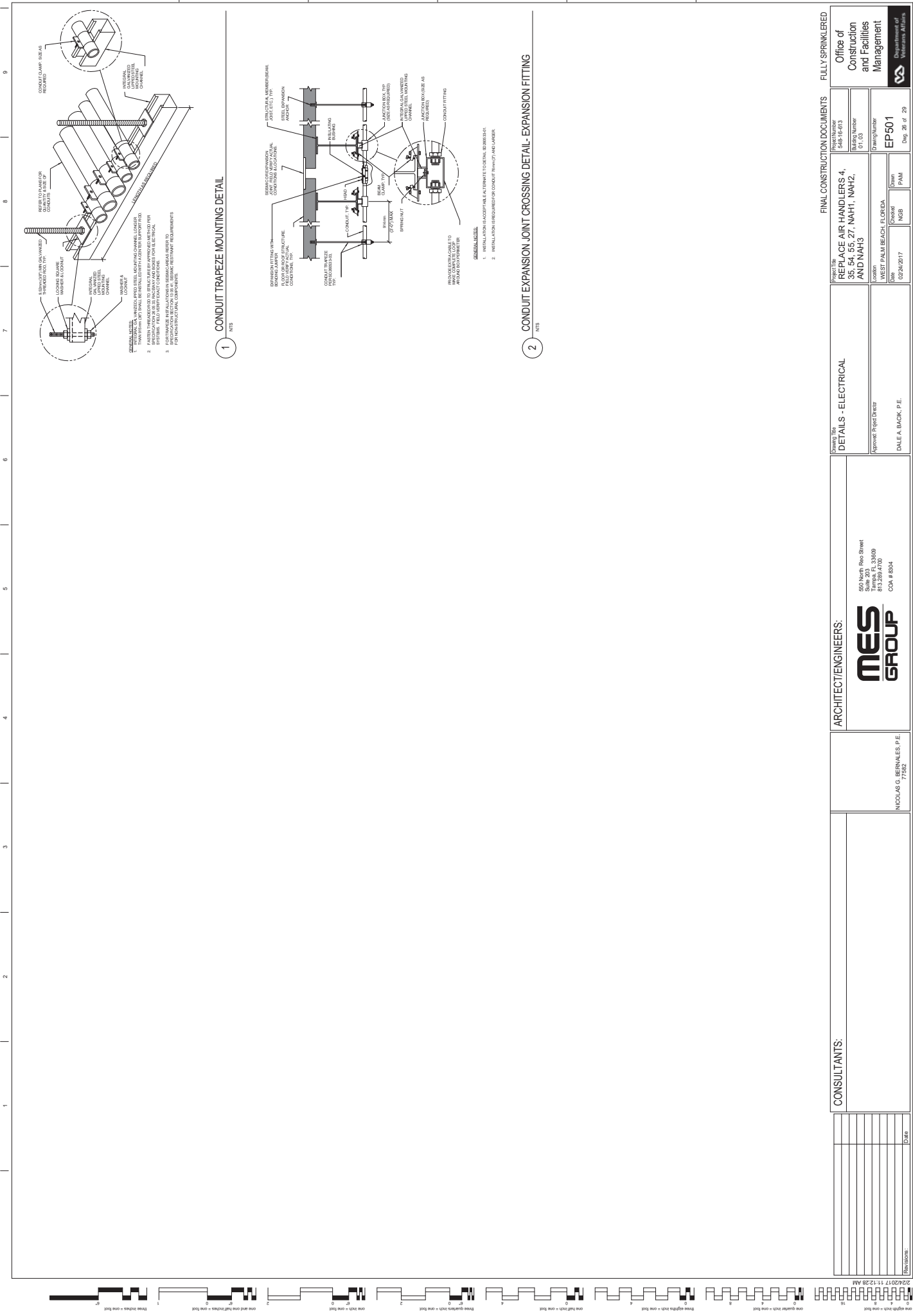
SCALE:
N.T.S.

FINAL CONSTRUCTION DOCUMENTS

OFFICE OF CONSTRUCTION AND FACILITIES MANAGEMENT

Department of Public Works

2/24/2017 11:12:28 AM



1 CONDUIT TRAPEZE MOUNTING DETAIL
N/A

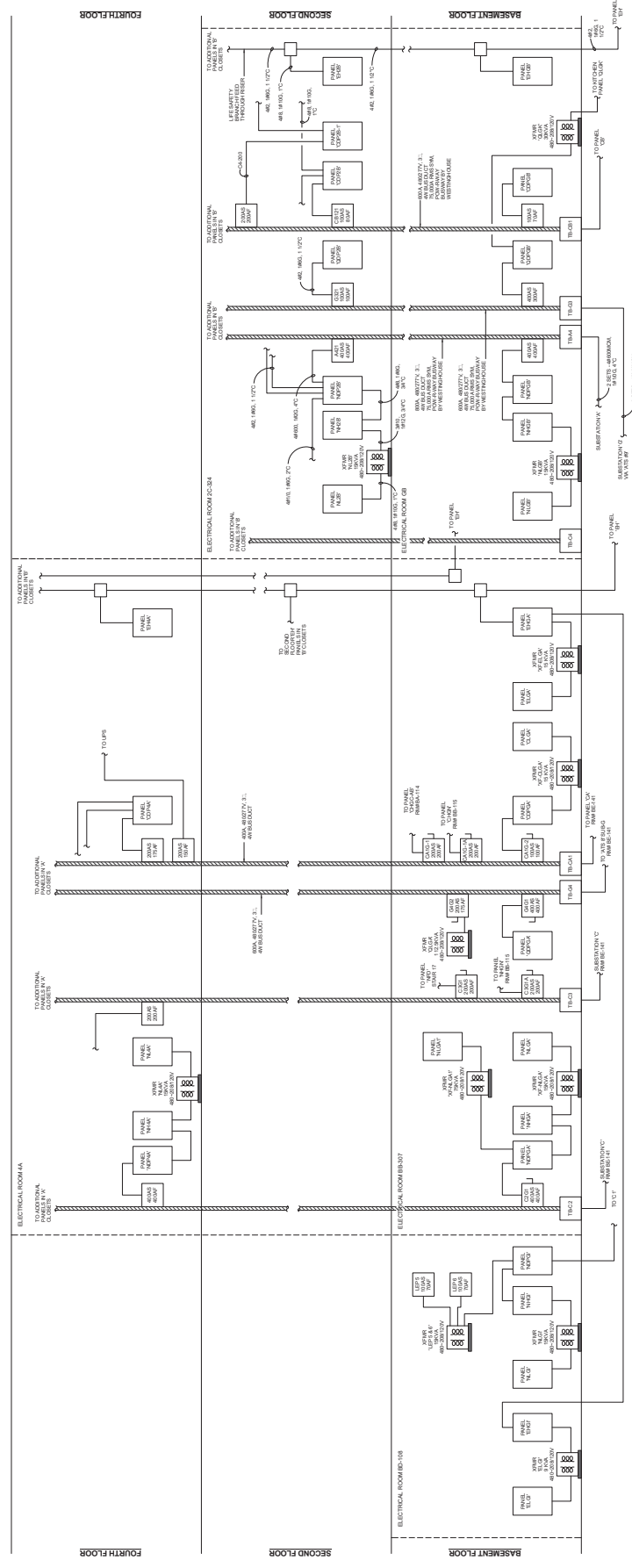
2 CONDUIT EXPANSION JOINT CROSSING DETAIL - EXPANSION FITTING
N/A

- GENERAL NOTES:**
- INSTALLATION IS ACCORDING TO THE NATIONAL ELECTRICAL CODE, SECTION 760.
 - INSTALLATION IS SUBJECT TO CONDUIT SUPPORT AND LAYOUT.

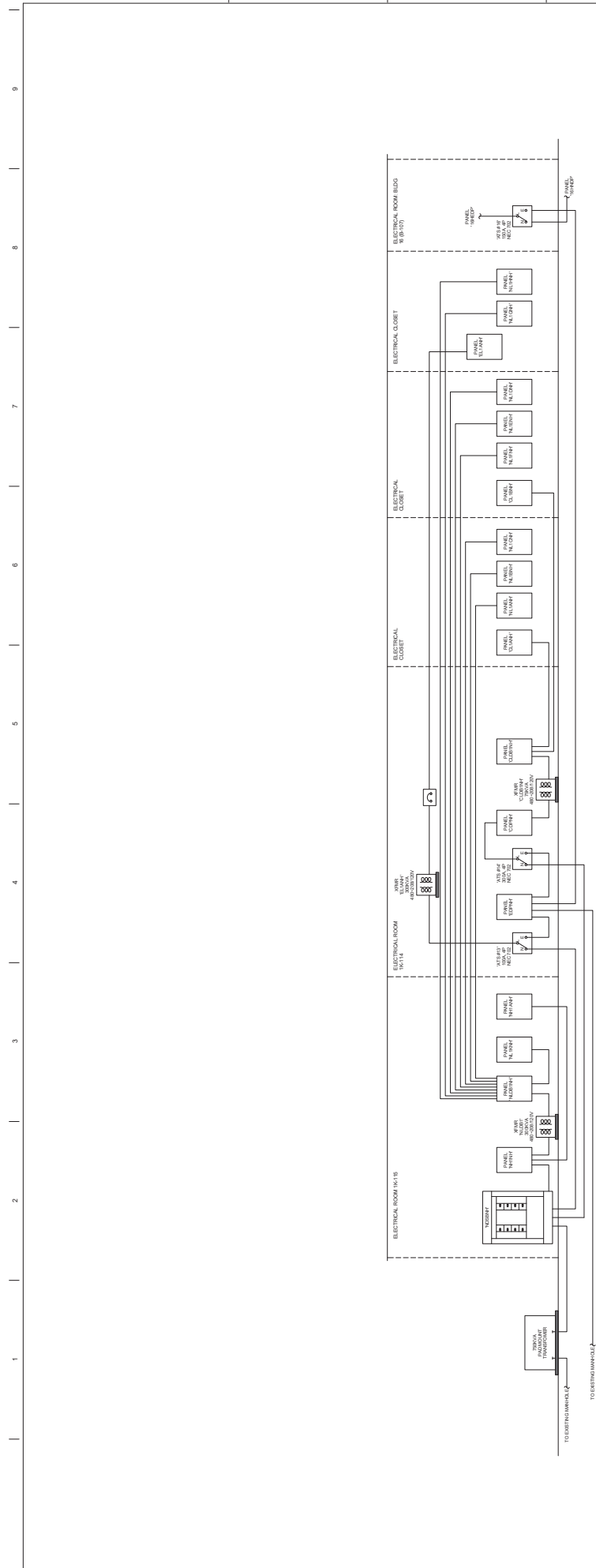
CONSULTANTS:		ARCHITECT/ENGINEERS:		FINAL CONSTRUCTION DOCUMENTS FULLY SPRINKLERED	
550 North Rice Street Suite 200 - 34509 813.269.4700 COA # 8304		MES GROUP		Office of Construction and Facilities Management Department of Public Works	
NICHOLAS G. BERNALES, P.E. 7/16/21		Approved Project Director DALE A. BACK, P.E.		Drawing Number EP501	
Drawn NGB		Checked NGB		Date 02/24/2017	
Scale 1" = 8'-0"		Project PAM		Sheet No. 548-18-013	
Date 02/24/2017		Title REPLACE AIR HANDLERS, 4, AND NAH3		Revision 01 of 03	
Project MUSEE PALM BEACH, FLORIDA		Drawing Number EP501		Date 02/24/2017	

1 BUILDING 1 - PARTIAL EXISTING ELECTRICAL RISER DIAGRAM

DATE: 11/12/17



CONSULTANTS: NICHOLAS G. BERNALES, P.E. 7/2024		ARCHITECT/ENGINEERS: MES GROUP 550 North Red Street Suite 203 San Jose, CA 95128 813.289.4700 COA # 8004		PROJECT: REPLACE AIR HANDLERS 4, ELECTRICAL AND NAH3		DRAWING NUMBER: EP601	
PROJECT LOCATION: 35.54.55.27.NAH1, NAH2, AND NAH3		PROJECT OWNER: MESTER PALM BEACH, FLORIDA		PROJECT MANAGER: NGB		PROJECT ENGINEER: PAM	
DATE: 02/24/2017		APPROVED PROJECT DIRECTOR: DALE A. BACK, P.E.		DRAWING NUMBER: 548-18-03		DATE: 01	
FINALLY SPRINKLERED				OFFICE OF CONSTRUCTION AND FACILITIES MANAGEMENT Department of Transportation M.F.C.			



1 BUILDING 3 - PARTIAL EXISTING ELECTRICAL RISER DIAGRAM

CONSULTANTS:		ARCHITECT/ENGINEERS:		MES GROUP		NICHOLAS G. BERNALES, P.E. 7/2024		550 North Red Street Suite 203 - 33409 813.269.4700 COA # 8304		APPROVED PROJECT DIRECTOR: DALE A. BACK, P.E.		DATE: 02/24/2017		DRAWN: NSB		CHECKED: NSB		DESIGNED: PAM		PROJECT NUMBER: EP602		DRAWING NUMBER: 00		SHEET NUMBER: 548-18-03		DATE: 02/24/2017		PROJECT NAME: REPLACE AIR HANDLERS 4, 35, 54, 55, 27, NAH1, NAH2, AND NAH3		OFFICE OF: Construction and Facilities Management		DEPARTMENT OF: Public Works		FULLY SPRINKLERED	
--------------	--	----------------------	--	-----------	--	--------------------------------------	--	---	--	--	--	---------------------	--	---------------	--	-----------------	--	------------------	--	--------------------------	--	-----------------------	--	----------------------------	--	---------------------	--	---	--	--	--	--------------------------------	--	-------------------	--

