



IT IS THE CUSTOMER'S RESPONSIBILITY TO NOTIFY CAMCORP IN WRITING IF THE DUST IS EXPLOSIVE OR HAS EXPLOSIVE CHARACTERISTICS.

- NOTES:
- (132) 6" DIA X 120" LG., 16 OZ. ARAMID FILTER BAGS PROVIDING A TOTAL FILTER AREA OF 2,112 SQ. FT.
 - (132) HEAVY DUTY #11 GA. GALVANIZED CARBON STEEL (12) WIRE FILTER BAG CAGES W/ 6" VENTURIS
 - REVERSE PULSE CLEANING SYSTEM CONSISTING OF:
 - 5" COMPRESSED AIR HEADER PIPE W/ PRESSURE GAUGE
 - (11) 1" DIA. GOYEN DIAPHRAGM VALVES W/ATION SEALS
 - (11) 1/8" DIA. GOYEN SOLENOID VALVES MOUNTED IN A NEMA 4 ENCLOSURE
 - COPPER TUBING BETWEEN SOLENOID & DIAPHRAGM VALVES (FACTORY INSTALLED)
 - SOLID STATE 'SMART/DEMAND CLEANING' SEQUENTIAL TIMER BOARD MOUNTED IN A NEMA 4 ENCLOSURE. (SHIPPED LOOSE, FIELD INSTALLED)
 - 4-20 mA OUTPUT SIGNAL
 - NOTE: 110V, 1 PH POWER REQUIRED
 - DIFFERENTIAL PRESSURE KIT CONSISTING OF:
 - 100 FT. 1/4" DIA. COPPER TUBING AND NECESSARY FITTINGS
 - EST. MANUFACTURED WEIGHT: 9,157 LBS
COMPONENT WEIGHT: 1,120 LBS
ASSEMBLED WEIGHT: 10,277 LBS
7. DESIGNED FOR ±20" W.C.

APPLICATION SPECIFICATIONS	
APPLICATION	BOILER FLUE ASPIRATION
PRODUCT	UNKNOWN
AIR VOLUME	8,000 CFM
OPERATING TEMP	350°F
AIR TO MEDIA RATIO	3.8 TO 1
CAN VELOCITY	11.3 FPM
INTERSTITIAL VELOCITY	178 FPM
MATERIAL & FINISH SPECIFICATIONS	
INTERIOR C.A.P. PAINT	SSPC-SP6 SANDBLAST W/ KEM 500 SILVER
INTERIOR D.A.P. PAINT	NONE
EXTERIOR PAINT	SSPC-SP6 SANDBLAST W/ KEM 500 SILVER
LAUDER/PLATEFORM	PRIMED & FINISH PAINTED SAFETY YELLOW ENAMEL
INTERIOR SEAM WELDS	STITCHED
EXTERIOR SEAM WELDS	CONTINUOUS
MATERIAL	#10 GA. CARBON STEEL HEAVY DUTY CONSTRUCTION 3/16" CARBON STEEL TUBESHEET

(2) UNITS REQUIRED

REV	DRAWING STATUS	BY	DATE



9732 PELUMM ROAD, LEXENA, KS 66215 PHONE: 913-831-0740 FAX: 913-831-9271

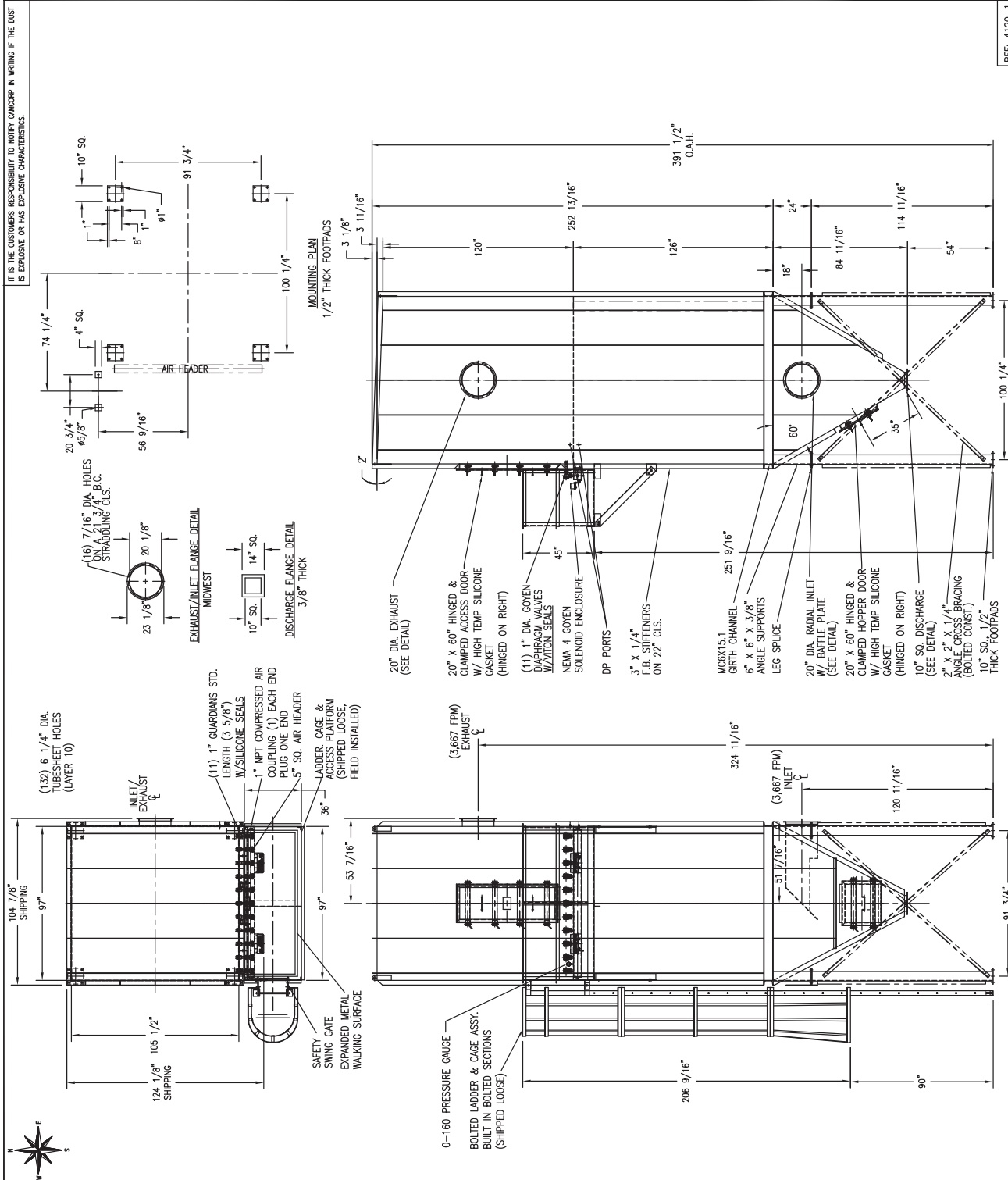
This drawing and the solutions/designs are the property of CAMCORP, Inc. and are furnished only for informational purposes on a confidential basis. Reproduction, publishing, or other disclosures are on a "NEED TO KNOW" basis only. Any other reproduction requires written authorization by a corporate officer.

FOR APPROVAL

CUSTOMER: **GEORGE K. MOSS**
VAMCU

TITLE: **MODEL 11TR10X132 DUST COLLECTOR**

APPROVED AS DRAWN	DATE: 9/20/12	SCALE:	REVISION:
APPROVED AS NOTED	DRAWN: IDK	CHECKED BY: P.O. NUMBER:	
PROCEED WITH FABRICATION	APPROVED BY: VA-7779	JOB NUMBER: CC4266-C	DRAWING NUMBER: 4266-1
REVISE AND RESUBMIT FOR APPROVAL PRIOR TO FABRICATION	SIGNATURE: _____	DATE: _____	



REF: 4120-1