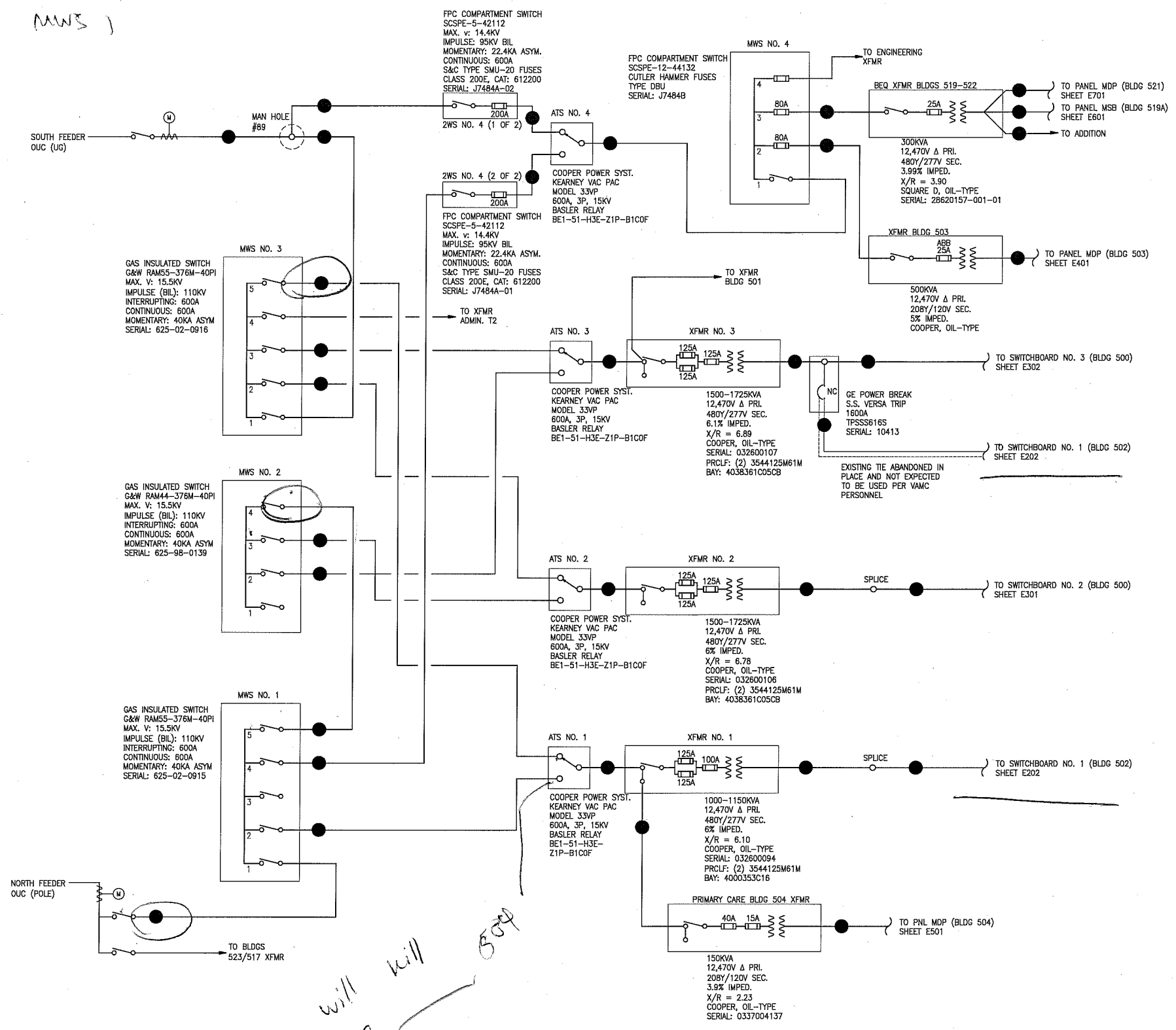



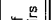
ATS 1 MWS 1



TAG #	CONDUIT	CONDUCTORS	GROUND	LENGTH
1	PVC	3#500KCMIL EPR CU (15KV)		750'
2	PVC	3#500KCMIL EPR CU (15KV)		315'
3	PVC	3#500KCMIL EPR CU (15KV)		15'
4	4" PVC	3#4/0 AL (15KV)	#4 CU	900'
5	6" PVC	3#4/0 AL (15KV)		100'
6	PVC	3#500KCMIL XLP AL (15KV)		300'
7	PVC	3#500KCMIL EPR CU (15KV)		30'
8	PVC	3#500KCMIL EPR CU (15KV)		15'
9	PVC	3#500KCMIL CU (15KV)		25'
10	PVC	3#500KCMIL EPR CU (15KV)		40'
11	NOT USED			
12	PVC	3#500KCMIL EPR CU (15KV)		305'
13	4" PVC	3#4/0 AL (15KV)	#4 CU	40'
14	PVC	3#500KCMIL EPR CU (15KV)		600'
15	PVC	3#4/0 AL (15KV)		30'
16	PVC	3#4/0 AL (15KV)		15'
17	PVC	3#4/0 AL (15KV)		15'
18	6" RGS	3#4/0 AL (15KV)		15'
19	6" PVC	3#4/0 AL (15KV)		15'
20	6" PVC	3#4/0 AL (15KV)		15'
21	4" PVC	UNKNOWN		355'
22	PVC	UNKNOWN		495'
23	(5) 4" PVC	(5) 4#500KCMIL	2#4/0	15'
24	(5) 3 1/2" RGS	(5) 4#500KCMIL CU		15'
25	(4) 4" RMC	(4) 4#500KCMIL THHN-2 CU		15'
26	(4) PVC	(4) 4#750KCMIL XLP AL		20'
27	(2) 4" PVC	(2) 4#600KCMIL THHN CU		130'
28	(2) 4" PVC	(2) 4#350KCMIL THW CU		80'
29	(5) 4" PVC	(5) 4#600KCMIL CU		45'
30	(4) PVC	(4) 3#750KCMIL THHN-THWN AL, #4/0 N		160'
31	(6) PVC	(6) 3#600KCMIL THHN-THWN AL, #4/0 N		230'
32	4" PVC	4#500KCMIL THHN CU	#4/0 THHN CU	175'
33	NOT USED			
34	NOT USED			
35	(6) PVC	(6) 3#750KCMIL THHN-THWN AL, #4/0 N		160'
36	NOT USED			
37	NOT USED			
38	NOT USED			
39	NOT USED			
40	NOT USED			
41	NOT USED			
42	NOT USED			
43	NOT USED			
44	NOT USED			
45	NOT USED			
46	NOT USED			
47	NOT USED			
48	NOT USED			
49	NOT USED			
50	NOT USED			

1 MEDIUM VOLTAGE ONE-LINE DIAGRAM
N.T.S.

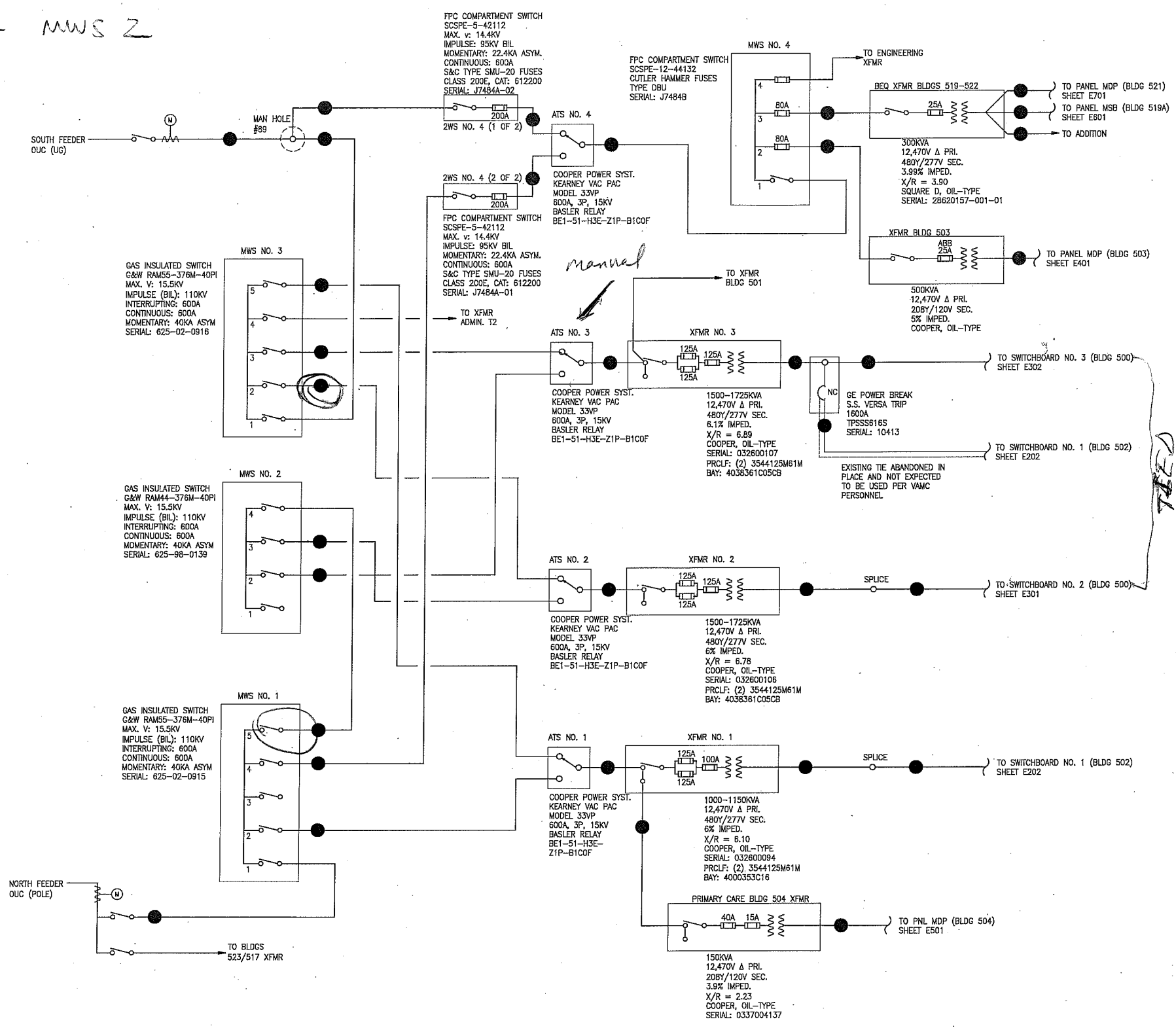
FINAL DRAWING SUBMITTAL
NOT FOR CONSTRUCTION

Revisions	Date	 <p>AKEA INC. 25105 W. NEWBERRY ROAD NEWBERRY, FL 32669 TEL. (352) 474-6124 FAX. (352) 474-6324</p>	Approved: Medical Center Director	Approved: Chief Engineer	Approved: Project Engineer	Drawing Title ONE-LINE DIAGRAM - MEDIUM VOLTAGE		Project Title ELECTRICAL SYSTEM STUDIES			Date 5/27/2011	 <p>Department of Veterans Affairs</p>
			Approved: Associate Medical Center Director	Approved: Assistant Chief Engineer	Approved: Area Maintenance Supervisor						Scale: AS NOTED	
			Approved: Associate Director, Patient Care/Nursing Service	Approved: Assistant Medical Director	Approved: Utilities Management Supervisor	Project No. 675-09-616	Contract No. VA249-P-0903	Designed By N/A	Checked By RAH	Drawn By CJF	Drawing No. E201	
			Approved: Chief of Staff	Approved: Safety Manager	Approved: Industrial Hygienist	Building No. AS NOTED	AutoCAD File Name	Location VA MEDICAL CENTER ORLANDO, FLORIDA			Dwg. 3 Of 17	
AKEA Project No.	732-09	Seal										

6/25/17

ATS 2 MWS 2

will kill
505-508



FEEDER SCHEDULE				
TAG #	CONDUIT	CONDUCTORS	GROUND	LENGTH
1	PVC	3#500KCMIL EPR CU (15KV)		750'
2	PVC	3#500KCMIL EPR CU (15KV)		315'
3	PVC	3#500KCMIL EPR CU (15KV)		15'
4	4" PVC	3#4/O AL (15KV)	#4 CU	900'
5	6" PVC	3#4/O AL (15KV)		100'
6	PVC	3#500KCMIL XLP AL (15KV)		300'
7	PVC	3#500KCMIL EPR CU (15KV)		30'
8	PVC	3#500KCMIL EPR CU (15KV)		15'
9	PVC	3#500KCMIL CU (15KV)		25'
10	PVC	3#500KCMIL EPR CU (15KV)		40'
11	NOT USED			
12	PVC	3#500KCMIL EPR CU (15KV)		305'
13	4" PVC	3#4/O AL (15KV)	#4 CU	40'
14	PVC	3#500KCMIL EPR CU (15KV)		600'
15	PVC	3#4/O AL (15KV)		30'
16	PVC	3#4/O AL (15KV)		15'
17	PVC	3#4/O AL (15KV)		15'
18	6" RGS	3#4/O AL (15KV)		15'
19	6" PVC	3#4/O AL (15KV)		15'
20	6" PVC	3#4/O AL (15KV)		15'
21	4" PVC	UNKNOWN		355'
22	PVC	UNKNOWN		495'
23	(5) 4" PVC	(5) 4#500KCMIL	2#4/O	15'
24	(5) 3 1/2" RGS	(5) 4#500KCMIL CU		15'
25	(4) 4" RMC	(4) 4#500KCMIL THHN-2 CU		15'
26	(4) PVC	(4) 4#750KCMIL THHN AL		20'
27	(2) 4" PVC	(2) 4#600KCMIL THHN CU		130'
28	(2) 4" PVC	(2) 4#350KCMIL THW CU		80'
29	(5) 4" PVC	(5) 4#600KCMIL CU		45'
30	(4) PVC	(4) 3#750KCMIL THHN-THWN AL #4/O N		160'
31	(6) PVC	(6) 3#600KCMIL THHN-THWN AL #4/O N		290'
32	4" PVC	4#500KCMIL THHN CU	#4/O THHN CU	175'
33	NOT USED			
34	NOT USED			
35	(6) PVC	(6) 3#750KCMIL THHN-THWN AL #4/O N		160'
36	NOT USED			
37	NOT USED			
38	NOT USED			
39	NOT USED			
40	NOT USED			
41	NOT USED			
42	NOT USED			
43	NOT USED			
44	NOT USED			
45	NOT USED			
46	NOT USED			
47	NOT USED			
48	NOT USED			
49	NOT USED			
50	NOT USED			

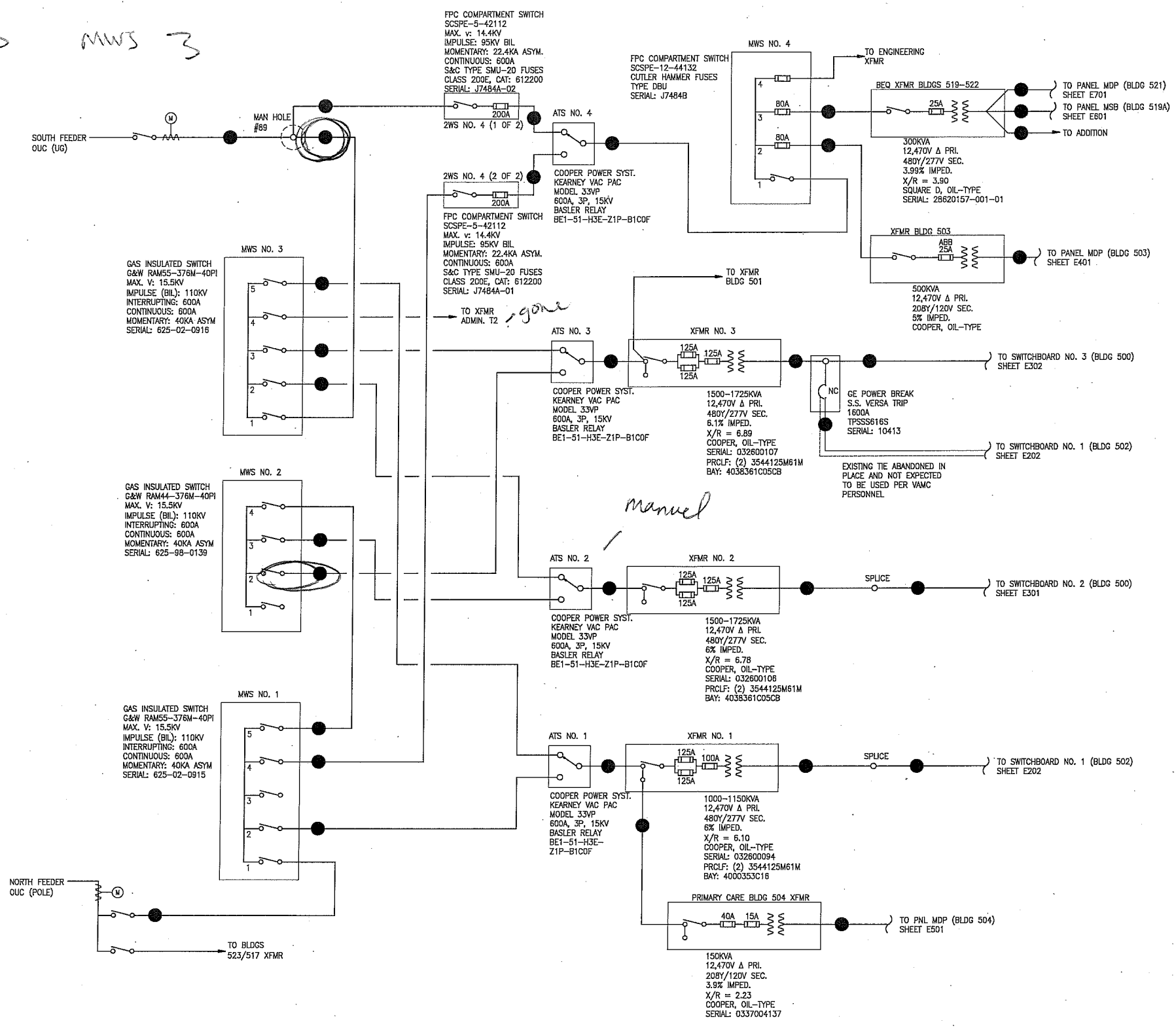
1 MEDIUM VOLTAGE ONE-LINE DIAGRAM
N.T.S.

FINAL DRAWING SUBMITTAL
NOT FOR CONSTRUCTION

Revisions	Date	AKEA INC. 25105 W. NEWBERRY ROAD NEWBERRY, FL 32669 TEL. (352) 474-6124 FAX. (352) 474-6324	Approved: Medical Center Director	Approved: Chief Engineer	Approved: Project Engineer	Drawing Title	Project Title	Date	Department of Veterans Affairs		
			Approved: Associate Medical Center Director	Approved: Assistant Chief Engineer	Approved: Area Maintenance Supervisor	ONE-LINE DIAGRAM - MEDIUM VOLTAGE	ELECTRICAL SYSTEM STUDIES	5/27/2011			
AKA Project No.	732-09	Seal	Approved: Associate Director, Patient Care/Nursing Service	Approved: Assistant Medical Director	Approved: Utilities Management Supervisor	Project No. 675-09-616	Contract No. VA248-P-0909	Designed By N/A	Checked By RAH	Drawn By CJF	Drawing No. E201
			Approved: Chief of Staff	Approved: Safety Manager	Approved: Industrial Hygienist	Building No. AS NOTED	AutoCAD File Name	Location VA MEDICAL CENTER ORLANDO, FLORIDA			Dwg. 3 Of 17

7/9/16

ATS 3 MWS 3



FEEDER SCHEDULE				
TAG #	CONDUIT	CONDUCTORS	GROUND	LENGTH
1	PVC	3#500KCMIL EPR CU (15KV)		750'
2	PVC	3#500KCMIL EPR CU (15KV)		315'
3	PVC	3#500KCMIL EPR CU (15KV)		15'
4	4" PVC	3#4/0 AL (15KV)	#4 CU	900'
5	6" PVC	3#4/0 AL (15KV)		100'
6	PVC	3#500KCMIL XLP AL (15KV)		300'
7	PVC	3#500KCMIL EPR CU (15KV)		30'
8	PVC	3#500KCMIL EPR CU (15KV)		15'
9	PVC	3#500KCMIL CU (15KV)		25'
10	PVC	3#500KCMIL EPR CU (15KV)		40'
11	NOT USED			
12	PVC	3#500KCMIL EPR CU (15KV)		305'
13	4" PVC	3#4/0 AL (15KV)	#4 CU	40'
14	PVC	3#500KCMIL EPR CU (15KV)		600'
15	PVC	3#4/0 AL (15KV)		30'
16	PVC	3#4/0 AL (15KV)		15'
17	PVC	3#4/0 AL (15KV)		15'
18	6" RGS	3#4/0 AL (15KV)		15'
19	6" PVC	3#4/0 AL (15KV)		15'
20	6" PVC	3#4/0 AL (15KV)		15'
21	4" PVC	UNKNOWN		355'
22	PVC	UNKNOWN		495'
23	(5) 4" PVC	(5) 4#500KCMIL	2#4/0	15'
24	(5) 3 1/2" RGS	(5) 4#500KCMIL CU		15'
25	(4) 4" RMC	(4) 4#500KCMIL THHN-2 CU		15'
26	(4) PVC	(4) 4#750KCMIL XLPE AL		20'
27	(2) 4" PVC	(2) 4#500KCMIL THHN CU		130'
28	(2) 4" PVC	(2) 4#350KCMIL THW CU		80'
29	(5) 4" PVC	(5) 4#500KCMIL CU		45'
30	(4) PVC	(4) 3#750KCMIL THHN-THWN AL, #4/0 N		160'
31	(6) PVC	(6) 3#600KCMIL THHN-THWN AL, #4/0 N		290'
32	4" PVC	4#500KCMIL THHN CU	#4/0 THHN CU	175'
33	NOT USED			
34	NOT USED			
35	(6) PVC	(6) 3#750KCMIL THHN-THWN AL, #4/0 N		160'
36	NOT USED			
37	NOT USED			
38	NOT USED			
39	NOT USED			
40	NOT USED			
41	NOT USED			
42	NOT USED			
43	NOT USED			
44	NOT USED			
45	NOT USED			
46	NOT USED			
47	NOT USED			
48	NOT USED			
49	NOT USED			
50	NOT USED			

1 MEDIUM VOLTAGE ONE-LINE DIAGRAM
N.T.S.

FINAL DRAWING SUBMITTAL
NOT FOR CONSTRUCTION

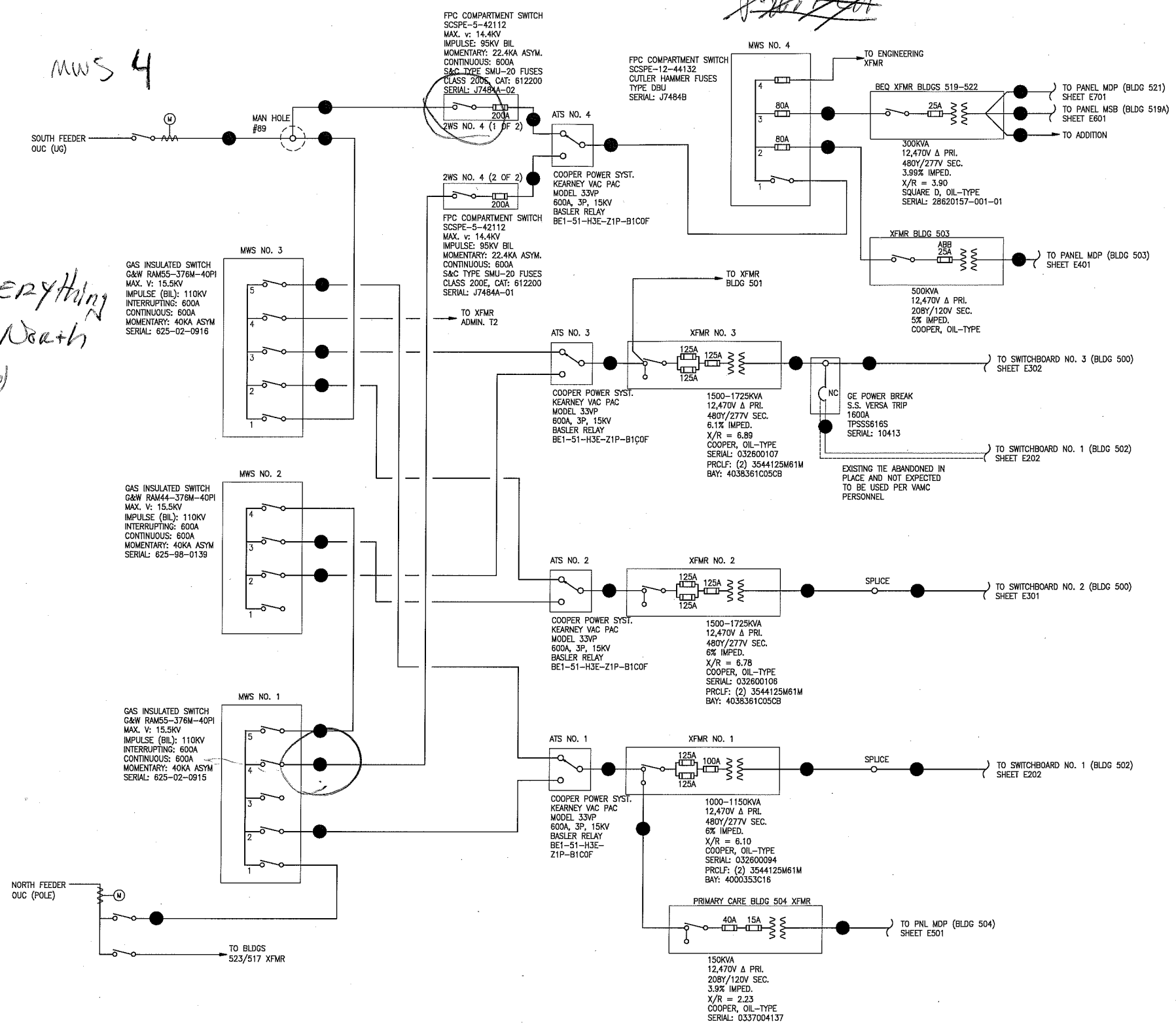
Revisions	Date	AKEA INC. 25105 W. NEWBERRY ROAD NEWBERRY, FL 32669 TEL. (352) 474-6124 FAX. (352) 474-6324	Approved: Medical Center Director	Approved: Chief Engineer	Approved: Project Engineer	Drawing Title	Project Title	Date
			Approved: Associate Medical Center Director	Approved: Assistant Chief Engineer	Approved: Area Maintenance Supervisor	ONE-LINE DIAGRAM - MEDIUM VOLTAGE	ELECTRICAL SYSTEM STUDIES	5/27/2011
			Approved: Associate Director, Patient Care/Nursing Service	Approved: Assistant Medical Director	Approved: Utilities Management Supervisor	Project No.	Contract No.	Scale:
			Approved: Chief of Staff	Approved: Safety Manager	Approved: Industrial Hygienist	675-09-616	VA248-P-0903	AS NOTED
						Building No.	AutoCAD File Name	Designed By
						AS NOTED		RAH
								Checked By
								CJF
								Drawn By
								E201
								Dwg. 3 Of 17

Department of Veterans Affairs

7/16/16

ATS4 MWS 4

Check?
Move everything
to the North
Feed



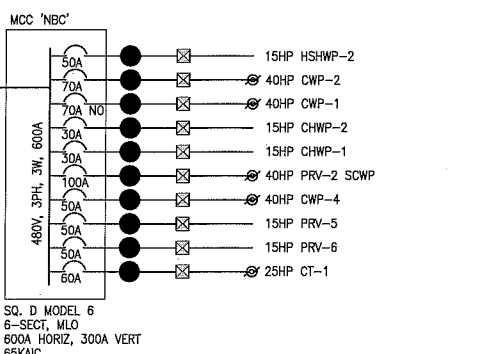
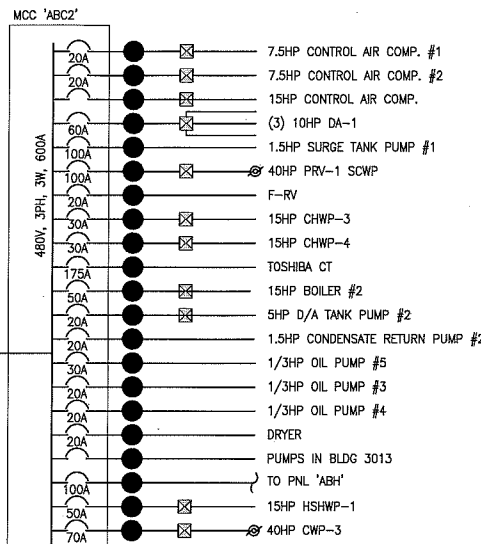
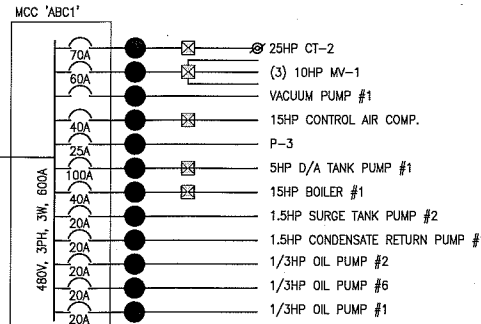
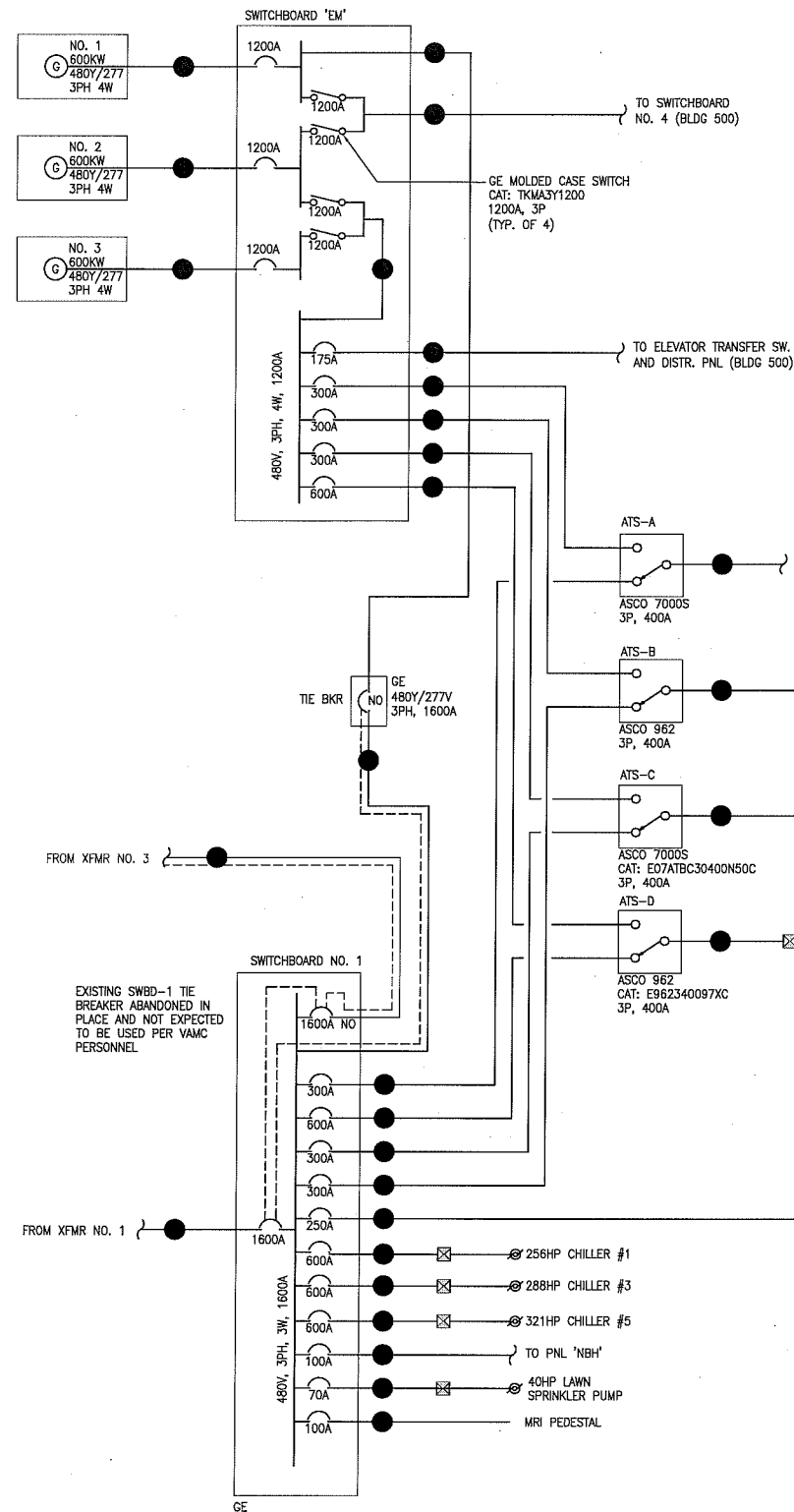
FEEDER SCHEDULE				
TAG #	CONDUIT	CONDUCTORS	GROUND	LENGTH
1	PVC	3#500KCMIL EPR CU (15KV)		750'
2	PVC	3#500KCMIL EPR CU (15KV)		315'
3	PVC	3#500KCMIL EPR CU (15KV)		15'
4	4" PVC	3#4/O AL (15KV)	#4 CU	900'
5	6" PVC	3#4/O AL (15KV)		100'
6	PVC	3#500KCMIL XLP AL (15KV)		300'
7	PVC	3#500KCMIL EPR CU (15KV)		30'
8	PVC	3#500KCMIL EPR CU (15KV)		15'
9	PVC	3#500KCMIL CU (15KV)		25'
10	PVC	3#500KCMIL EPR CU (15KV)		40'
11	NOT USED			
12	PVC	3#500KCMIL EPR CU (15KV)		305'
13	4" PVC	3#4/O AL (15KV)	#4 CU	40'
14	PVC	3#500KCMIL EPR CU (15KV)		600'
15	PVC	3#4/O AL (15KV)		30'
16	PVC	3#4/O AL (15KV)		15'
17	PVC	3#4/O AL (15KV)		15'
18	6" RGS	3#4/O AL (15KV)		15'
19	6" PVC	3#4/O AL (15KV)		15'
20	6" PVC	3#4/O AL (15KV)		15'
21	4" PVC	UNKNOWN		355'
22	PVC	UNKNOWN		495'
23	(5) 4" PVC	(5) 4#500KCMIL	2#4/O	15'
24	(5) 3 1/2" RGS	(5) 4#500KCMIL CU		15'
25	(4) 4" RMC	(4) 4#500KCMIL THHN-2 CU		15'
26	(4) PVC	(4) 4#500KCMIL XLP AL		20'
27	(2) 4" PVC	(2) 4#500KCMIL THHN CU		130'
28	(2) 4" PVC	(2) 4#350KCMIL THW CU		80'
29	(5) 4" PVC	(5) 4#600KCMIL CU		45'
30	(4) PVC	(4) 3#750KCMIL THHN-THWN AL #4/O N		160'
31	(6) PVC	(6) 3#600KCMIL THHN-THWN AL #4/O N		290'
32	4" PVC	4#500KCMIL THHN CU	#4/O THHN CU	175'
33	NOT USED			
34	NOT USED			
35	(6) PVC	(6) 3#750KCMIL THHN-THWN AL #4/O N		160'
36	NOT USED			
37	NOT USED			
38	NOT USED			
39	NOT USED			
40	NOT USED			
41	NOT USED			
42	NOT USED			
43	NOT USED			
44	NOT USED			
45	NOT USED			
46	NOT USED			
47	NOT USED			
48	NOT USED			
49	NOT USED			
50	NOT USED			

will kill
3000 series
509
510
3130

1 MEDIUM VOLTAGE ONE-LINE DIAGRAM
N.T.S.

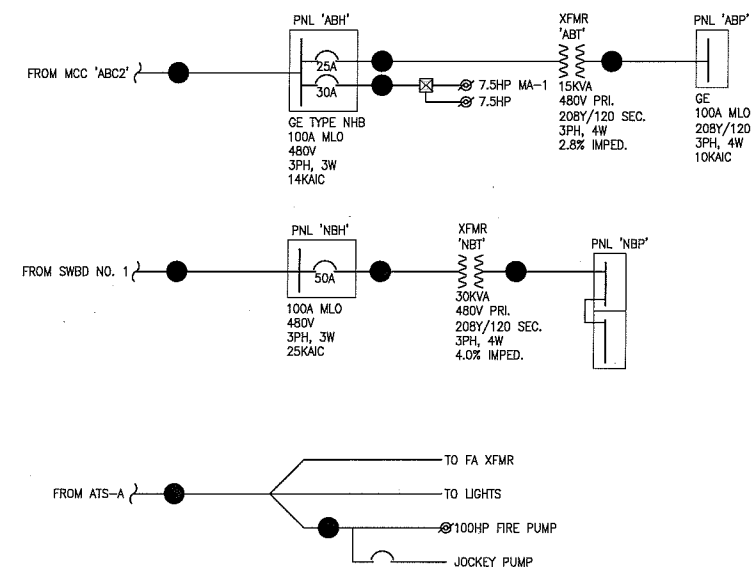
FINAL DRAWING SUBMITTAL
NOT FOR CONSTRUCTION

Revisions	Date	AKEA INC. 25105 W. NEWBERRY ROAD NEWBERRY, FL 32669 TEL. (352) 474-6124 FAX. (352) 474-6324	Approved: Medical Center Director	Approved: Chief Engineer	Approved: Project Engineer	Drawing Title	Project Title	Date	Department of Veterans Affairs	
			Approved: Associate Medical Center Director	Approved: Assistant Chief Engineer	Approved: Area Maintenance Supervisor	ONE-LINE DIAGRAM - MEDIUM VOLTAGE	ELECTRICAL SYSTEM STUDIES	5/27/2011		
AKEA Project No.	732-09	Seal	Approved: Associate Director, Patient Care/Nursing Service	Approved: Assistant Medical Director	Approved: Utilities Management Supervisor	Project No.	Designed By	Checked By	Drawn By	Drawing No.
			Approved: Chief of Staff	Approved: Safety Manager	Approved: Industrial Hygienist	675-09-616	N/A	RAH	CJF	E201
						Building No.	Location			Dwg. 3 OF 17
						AS NOTED	VA MEDICAL CENTER ORLANDO, FLORIDA			



FEEDER SCHEDULE				
TAG #	CONDUIT	CONDUCTORS	GROUND	LENGTH
51	(3) PVC	(3) 48750KCMIL AL		45'
52	(3) PVC	(3) 48750KCMIL AL		30'
53	(3) PVC	(3) 48750KCMIL AL		20'
54	(4) PVC	(4) 48600KCMIL THW AL	NONE	500'
55	(2) PVC & RMC	(2) 48250KCMIL AL	CU	580'
56	PVC	3#4/0 THW AL		25'
57	3"	#600KCMIL THHN-2 AL		50'
58	3 1/2" EMT	#600KCMIL THW AL		40'
59	3" EMT	#500KCMIL THWN		30'
60	(4) 4" EMT	(4) 48500KCMIL CU	(4) #2 CU	20'
61	(4) 4" EMT	(4) 48500KCMIL CU		35'
62	PVC	3#4/0 THW AL		35'
63	3" EMT	#500KCMIL THWN		40'
64	3 1/2" RMC	#600KCMIL THHN-2 AL		20'
65	3"	#600KCMIL THHN-2 AL		60'
66	3 1/2" RMC	#500KCMIL AL		100'
67	RMC	3#400KCMIL CU	#3 CU	145'
68	RMC	3#400KCMIL CU	#3 CU	165'
69	RMC	3#400KCMIL CU	#3 CU	165'
70	2" EMT	#4/0 CU	#10 CU	25'
71	PVC	3#4 CU		280'
72	PVC	3#2 CU		300'
73	2" PVC	3#4/0 THW AL		15'
74	3" PVC	3#600KCMIL THW AL		15'
75	3 1/2" PVC	3#600KCMIL THW AL		80'
76	3" EMT	3#500KCMIL THWN CU		160'
77	3/4" EMT	#8 THWN CU		170'
78	1" EMT	#6 THWN CU		40'
79	EMT	3#8 CU		60'
80	NOT FOUND	#10 CU		
81	EMT	3#10 CU		25'
82	EMT	3#8 CU		45'
83	EMT	3#8 CU		25'
84	PVC	3#8 CU		40'
85	PVC	3#8 CU		55'
86	PVC	3#8 CU		55'
87	PVC	3#8 CU		55'
88	NOT FOUND			
89	EMT	3#12 CU		25'
90	1" EMT	3#10 CU		80'
91	EMT	3#8 CU		80'
92	EMT	3#8 CU		50'
93	1" EMT	3#6 THWN CU		80'
94	EMT	3#4 CU		60'
95	EMT	3#10 CU		135'
96	EMT	3#10 CU		80'
97	EMT	3#10 CU		80'
98	PVC	3#250KCMIL CU		300'
99	EMT	3#6 CU		55'
100	EMT	3#8 CU		25'

FEEDER SCHEDULE				
TAG #	CONDUIT	CONDUCTORS	GROUND	LENGTH
101	PVC	3#8 CU		35'
102	PVC	3#8 CU		45'
103	PVC	3#8 CU		45'
104	PVC	3#8 CU		45'
105	EMT	3#8 CU		80'
106	NOT FOUND			
107	2" EMT	3#4 CU	#10	70'
108	3/4" EMT	3#10 THHN CU		70'
109	1" RMC	3#6 ATW CU		150'
110	3/4" EMT	3#10 THHN CU		30'
111	1" RMC	3#6 ATW CU		150'
112	1" RMC	3#6 ATW CU		150'
113	EMT	3#6 CU		75'
114	EMT	3#6 CU		75'
115	EMT	3#4 CU		65'
116	1" RMC	3#6 ATW CU		150'
117	EMT	3#8 CU		65'
118	EMT	3#8 CU		65'
119	3/4" EMT	3#8 THWN CU		150'
120	3/4" EMT	3#10 CU		10'
121	3/4" EMT	3#10 THWN CU		90'
122	NOT USED			
123	1" RMC	4#6 TW CU	NONE	35'
124	RMC	3#8 CU		10'
125	RMC	4#4 CU		35'
126	NONE	(3) 3#500KCMIL CU		5'
127	NOT USED			
128	PVC	3#2/0 CU		165'
129	NOT USED			
130	NOT USED			
131	NOT USED			
132	NOT USED			
133	NOT USED			
134	NOT USED			
135	NOT USED			
136	NOT USED			
137	NOT USED			
138	NOT USED			
139	NOT USED			
140	NOT USED			
141	NOT USED			
142	NOT USED			
143	NOT USED			
144	NOT USED			
145	NOT USED			
146	NOT USED			
147	NOT USED			
148	NOT USED			
149	NOT USED			
150	NOT USED			



1 BLDG 502 ONE-LINE DIAGRAM
N.T.S.

FINAL DRAWING SUBMITTAL
NOT FOR CONSTRUCTION

Revisions	Date	AKEA INC. 25105 W. NEWBERRY ROAD NEWBERRY, FL 32669 TEL. (352) 474-6124 FAX. (352) 474-6324	Approved: Medical Center Director	Approved: Chief Engineer	Approved: Project Engineer	Drawing Title	Project Title	Date
			Approved: Associate Medical Center Director	Approved: Assistant Chief Engineer	Approved: Area Maintenance Supervisor	ONE-LINE DIAGRAM - BUILDING 502	ELECTRICAL SYSTEM STUDIES	5/27/2011
		Approved: Associate Director, Patient Care/Nursing Service	Approved: Assistant Medical Director	Approved: Utilities Management Supervisor	Project No. 675-09-616	Contract No. VA248-P-0903	Designed By N/A	Checked By RAH
		Approved: Chief of Staff	Approved: Safety Manager	Approved: Industrial Hygienist	Building No. AS NOTED	AutoCAD File Name	Drawn By CJF	Drawing No. E202
							Location VA MEDICAL CENTER ORLANDO, FLORIDA	Dwg. 4 Of 17