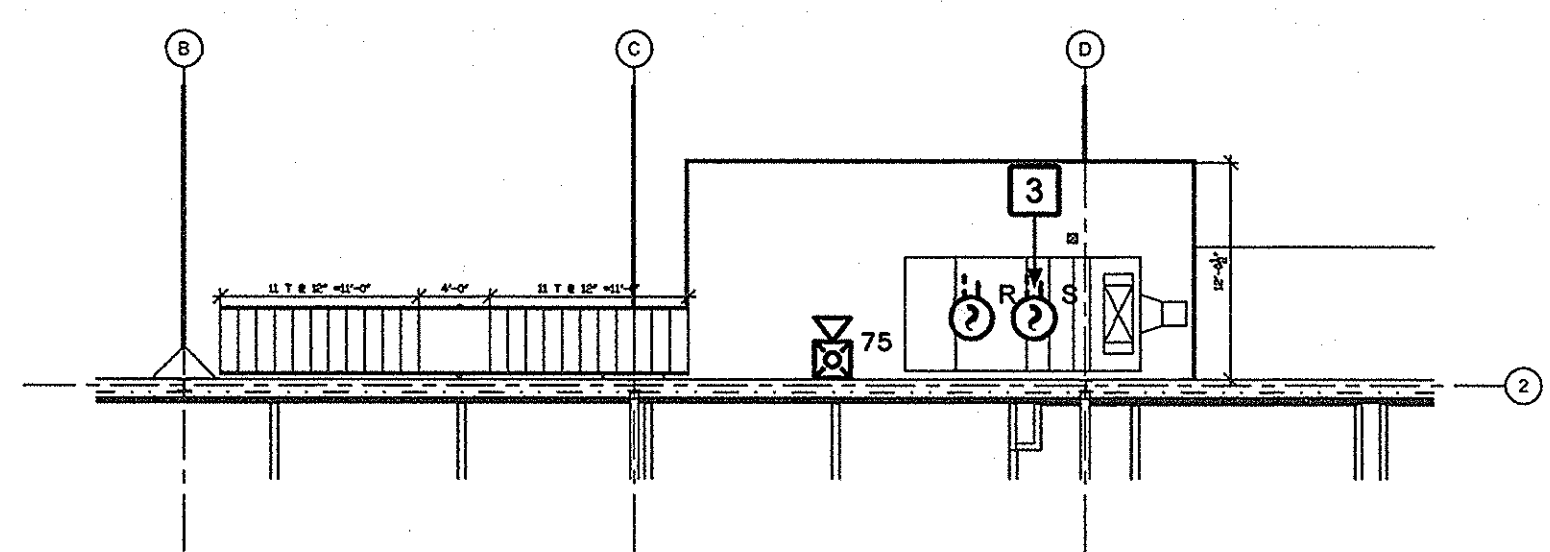


- DRAWING NOTES:**
- 1 LOCATION OF NAC EXTENDER PANELS. CONTRACTOR TO DETERMINE QUANTITY OF PANEL(S). PROVIDE SMOKE DETECTOR ABOVE NAC PANEL(S) AS INDICATED.
  - 2 COORDINATE CONNECTION OF 120V POWER SUPPLY WITH ELECTRICAL CONTRACTOR.
  - 3 ADDRESSABLE DUCT DETECTOR TO BE PROVIDED IN SUPPLY AND RETURN DUCT WORK IN AIR HANDLING UNIT. PROVIDE REMOTE TEST SWITCH ALONG AN ACCESSIBLE WALL IN THE IMMEDIATE VICINITY OF EACH DETECTOR. SEE MECHANICAL DRAWINGS FOR EXACT LOCATION OF UNIT.
  - 4 WEATHER-PROOF TAMPER SWITCH, WITH ADDRESSABLE MONITOR MODULE, TO BE PROVIDED ON POST-INDICATOR VALVE. COORDINATE LOCATION WITH CIVIL.
  - 5 PROVIDE CEILING MOUNTED NOTIFICATION APPLIANCES IN WAREHOUSE AREA.
  - 6 WEATHER-PROOF STROBE.
  - 7 EXTERIOR WEATHER-PROOF ELECTRIC HORN.
  - 8 PROVIDE SEMI-FLUSH MOUNT.



**WAREHOUSE MEZZANINE-  
FIRE ALARM AND DETECTION PLAN**  
SCALE: 3/32" = 1'-0"



FULLY SPRINKLERED

**WAREHOUSE - FIRE ALARM AND DETECTION PLAN**  
SCALE: 3/32" = 1'-0"

Revision Schedule	
Revision Number	Revision Date

CONSULTANTS:			
CIVIL / STRUCTURAL	MECH / PLUMBING	ELECTRICAL	FIRE PROTECTION
Simpkins & Costelli, Inc.	Atherton Consulting Engineers	Watkins & O'Gwynn	Koffel Associates, Inc.
401 32 1/2 Street Gulfport, MS 39506	1907 Pass Road, Suite G Biloxi, MS 39531	4523 Office Park Drive Jackson, MS 39206	6522 Meadow Ridge Road, Suite 101 Elkridge, MD 21075
t: 228.864.6289 f: 228.864.2897	t: 601.362.0478 f: 601.981.0575	t: 601.982.3313 f: 601.982.7685	t: 410.750.2246 f: 410.750.2588

**CONSTRUCTION  
DOCUMENT  
SUBMISSION-**

**ARCHITECT:**  
**ELLERBE BECKET**

2380 McGee Street,  
Suite 200  
Kansas City, MO 64108  
816 561 4443

Ellerbe Becket, Inc.  
Ellerbe Becket Architects  
and Engineers, Inc.  
Ellerbe Becket Architects  
and Engineers

2008

Drawing Title: <b>FIRE ALARM AND DETECTION - FLOOR 1</b>
Approved: Project Director

Project Title: <b>Construct New Warehouse</b>		Project Number <b>520-320</b>
Location <b>BILOXI, MS</b>		Building Number <b>26</b>
Date <b>3/10/08</b>	Checked <b>SSG</b>	Drawn <b>PHZ</b>
Drawing Number <b>FA101</b>		Dwg. 100 of 105

**Office of  
Facilities  
Management**

Department of  
Volunteers Affairs