

A

B

C

D

E

F

BID DEDUCT ALTERNATE #1

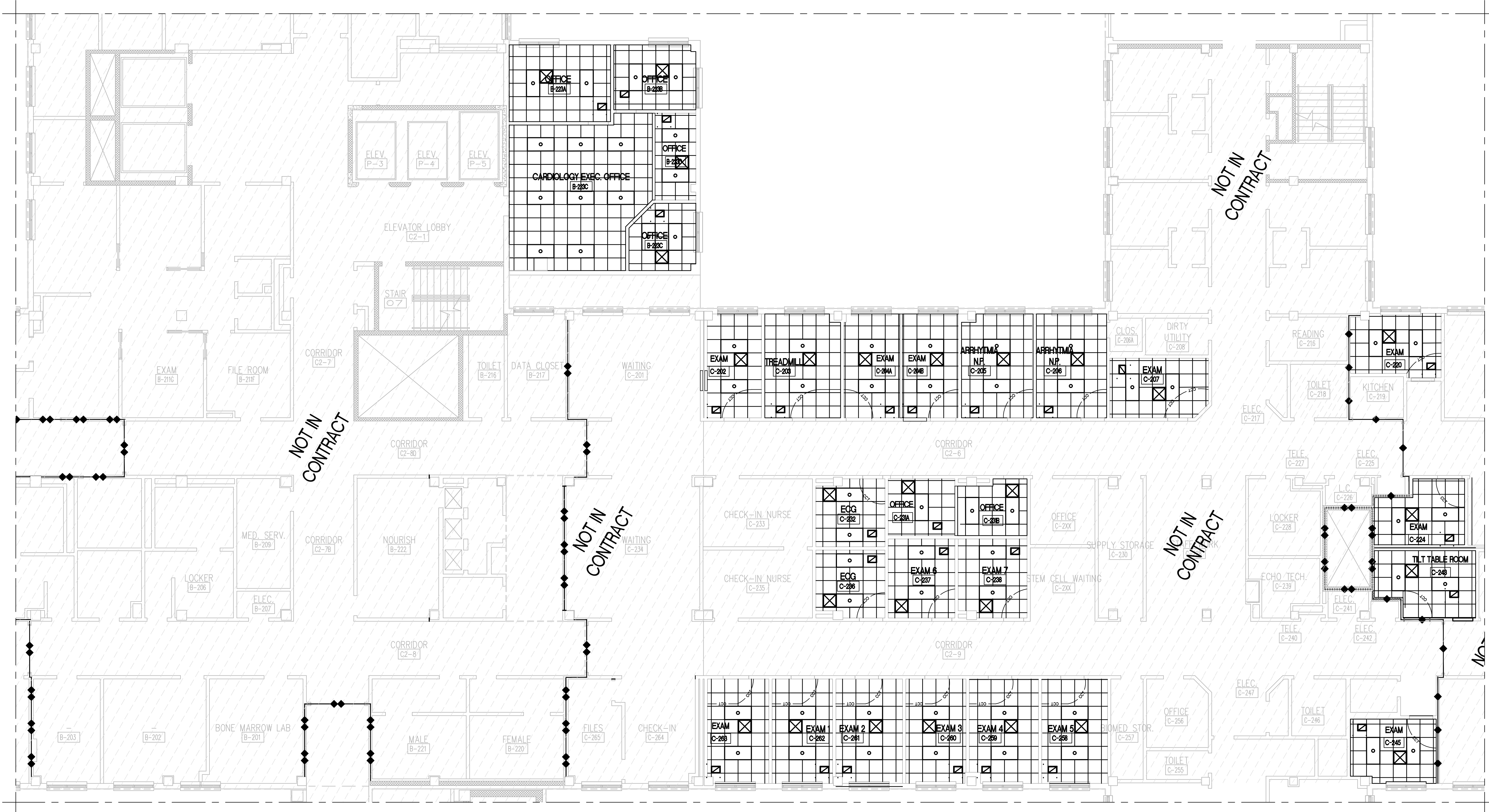
DELETE WORK ASSOCIATED WITH DEMOLITION AND NEW CONSTRUCTION OF EXAM ROOMS C-207, C-232, C-236, C-237, AND C-238.

GENERAL REFLECTED CEILING PLAN NOTES

- A. ALL CEILING HEIGHTS SHALL BE INSTALLED AT THE SAME HEIGHT AS THE EXISTING CEILING UNLESS NOTED OTHERWISE.
- B. CONTRACTOR SHALL REMOVE ALL DEVICES AND EQUIPMENT FROM CEILINGS AND SHALL TURN THEM OVER TO THE VAMC.
- C. SEE MECHANICAL AND ELECTRICAL PLANS FOR COORDINATION.
- D. SPRINKLER HEADS SHALL BE INSTALLED IN CENTER OF 2X2 CEILING PANELS.
- E. CEILING RELATED MECHANICAL AND ELECTRICAL ITEMS SHOWN ON REFLECTED CEILING PLAN ARE FOR THE PURPOSE OF INDICATING ONLY THEIR RESPECTIVE LOCATIONS. REFER TO MECHANICAL/ELECTRICAL PLANS FOR TYPE, SIZE AND OTHER REQUIREMENTS PERTAINING SPECIFICALLY TO THESE ITEMS.
- F. ALL ROOMS IN THE PROJECT SCOPE SHALL RECEIVE NEW ACT TILES AND GRID, REFER TO A1101 FOR ACT TILE AND GRID TYPE.
- G. CUBICLE CURTAIN AND TRACK SHALL BE PROVIDED AND INSTALLED BY THE CONTRACTOR. REFER TO SPECIFICATION 10 21 23 FOR TRACK TYPE, CUBICLE CURTAIN SHALL MATCH THE CURRENT FACILITY STANDARD.

REFLECTED CEILING PLAN LEGEND

- 2' X 4' ACOUSTICAL TILE CEILING
- 2' X 2' ACOUSTICAL TILE CEILING
- 2' X 2' TROFFER LIGHT
- 2' X 4' TROFFER LIGHT
- RECESSED CAN LIGHT
- 1' X 4' STRIP LIGHT

HVAC RETURNHVAC SUPPLYEXHAUSTCURTAIN TRACKSHOWER CURTAINGYPSUM BOARD CEILING


F1 SECOND FLOOR REFLECTED CEILING PLAN
1/8" = 1'-0"

KEY PLAN - BUILDING 1 - SECOND FLOOR
NTS



Revisions:	Date:

CONSULTANT

ARCHITECT/ENGINEER OF RECORD
 paradigm
Architecture Engineering Design-Build
200 Envoy Circle, Suite 201, Louisville, KY 40299
www.paradigmusa.com

STAMP

Office of Construction and Facilities Management
 U.S. Department of Veterans Affairs

Drawing Title
SECOND FLOOR REFLECTED CEILING PLAN
Approved: Project Director

Phase
BID DOCUMENTS FOR CONSTRUCTION
FULLY SPRINKLERED

Project Title
CARDIOLOGY IMPROVEMENTS
LocationNASHVILLE VAMC 130 24TH AVENUE SOUTH, NASHVILLE, TN 37222
Issue Date 08-29-2017
Checked DML
Drawn BLM

Project Number
626-17-101
Building Number
1
Drawing Number
AE201