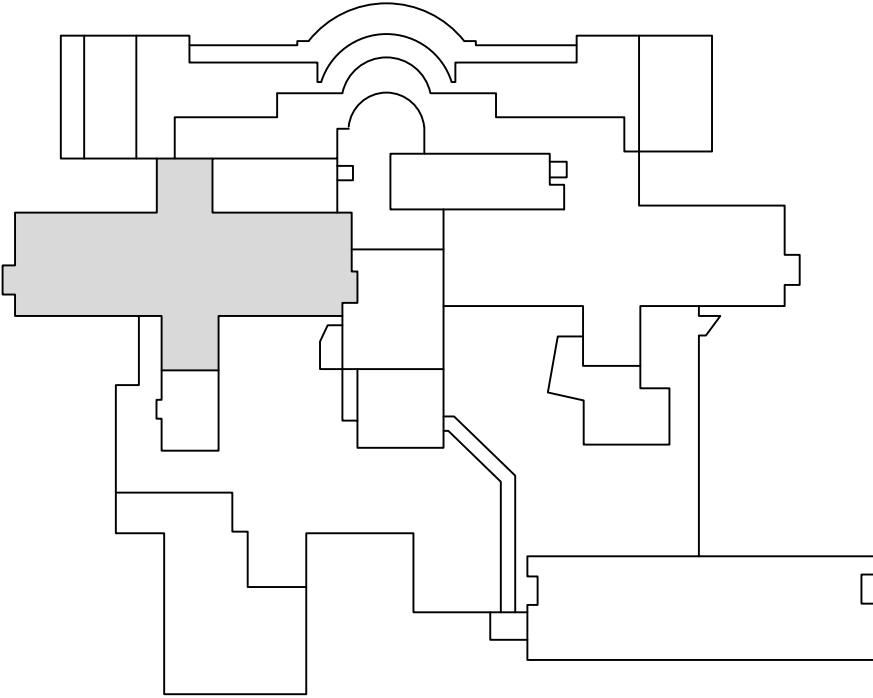


- GENERAL FINISH PLAN NOTES**
- A. REFER TO AE301 AND 401 FOR ENLARGED EQUIPMENT PLANS AND SCHEDULE.
- B. COORDINATE ALL EQUIPMENT AND FURNITURE WITH VAMC.
- C. FURNITURE AND MODULAR EXAM ROOM WORKSTATIONS SHOWN RECOMMENDATION OF A/E. COORDINATE WITH VAMC FACILITY DESIGNER FOR FURNITURE AND MODULAR EXAM ROOM WORKSTATIONS SHALL BE PURCHASED UNDER SEPARATE CONTRACT.
- D. MODULAR EXAM ROOM WORKSTATIONS SHALL BE PURCHASED BY VAMC AND INSTALLED BY THE CONTRACTOR.


FINISH LEGEND		
FINISH	FLOORS	
LT-1	LINOLEUM TILE (EXAM)	FORBO MARMOLEUM MODULAR- 20" x 20" , STRIATO T3575 WHITE CLIFFS
LT-2	LINOLEUM TILE (OFFICE)	FORBO MARMOLEUM MODULAR- 20" x 20" , STRIATO T5226 GREY GRANITE
LVT-XX	LUXURY VINYL TILE (CORRIDOR)	MATCH EXISTING, PATCH AND REPAIR AS NECESSARY TO ACCOMIDATE NEW CONSTRUCTION
FINISH	WALLS	
P1	PAINT, FIELD COLOR	SHERWIN WILLIAMS CREAMY SW7012 (EGGSHELL)
P2	TRIM PAINT (DOOR AND WINDOW FRAMES)	SHERWIN WILLIAMS TONY TAUPE SW7038 (SEMI GLOSS)
P3	PAINT, ACCENT WALL (WINDOW OR REAR WALL IN EXAM ROOMS)	SHERWIN WILLIAMS SW7059 UNUSUAL GREY
PT-XX	PAINT, (CORRIDOR)	PATCH AND REPAIR CORRIDOR FINISHES, MATCH EXISTING. CONTRACTOR SHALL PAINT CORNER TO CORNER
WP	WALL PROTECTION WAINSCOT	CS ACROVYN - AMBER CHERRY (UP TO 48") PROVIDE ALUM. TOP CAP.
FINISH	OTHER	
SS	SOLID SURFACE (WALL PANELING)	CORIAN, BONE 1/2"
CG	CORNER GUARD	CS ACROVYN- TAN - FULL HEIGHT
FINISH	BASE	
RB	RUBBER BASE	JOHNSONITE MW-66-F REVEAL EITHER ORE
RB-XX	RUBBER BASE (CORRIDOR)	PATCH AND REPAIR CORRIDOR FINISHES AS NECESSARY, MATCH EXISTING. RUBBER BASE SHALL BE INSTALLED TO CREATE A CONTINUOUS FINISH. PROVIDE NEW BASE FROM DOOR FRAME TO NEXT CORNER OR FRAME.
FINISH	CEILING	
ACT	ACOUSTICAL CEILING TILE & GRID	USG 22521 RADAR HIGH NRC/CAC (2' x 2') SQUARE EDGE, DX/DXL GRID

- FINISH PLAN NOTES**
1. PROVIDE SOLID SURFACE WALL PANELING UP TO 4'-0" BEHIND HAND SINK LOCATIONS.
2. PATCH AND REPAIR CORRIDOR FINISHES. MATCH EXISTING ADJACENT CONDITIONS.
3. WALL MOUNTED ROOM SIGN.
4. DOOR MOUNTED ROOM SIGN.
5. ACCENT PAINT (P3) LOCATION
6. PROVIDE WALL PROTECTION (WP) UP TO 4'-0" A.F.F. PROVIDE ALUM. CAP STRIP AT TOP.



KEY PLAN - BUILDING 1 - SECOND FLOOR

F1 SECOND FLOOR FINISH PLAN
1/8" = 1'-0"

		CONSULTANT	ARCHITECT/ENGINEER OF RECORD	STAMP	<div>Office of Construction and Facilities Management</div> <div>VAU.S. Department of Veterans Affairs</div>	Drawing Title	Phase	Project Title	Project Number
			<div> paradigm</div> <div>Architecture Engineering Design-Build</div> <div>200 Envoy Circle, Suite 201, Louisville, KY 40299</div> <div>www.paradigmusa.com</div>			SECOND FLOOR FINISH PLAN	BID DOCUMENTS FOR CONSTRUCTION	CARDIOLOGY IMPROVEMENTS	626-17-101
				Approved: Project Director				Building Number	
						FULLY SPRINKLERED	LocationNASHVILLE VAMC 130 24TH AVENUE SOUTH, NASHVILLE, TN 37226	1	
							Issue Date 08-29-2017	Checked DML	Drawn BLM
Revisions:	Date:								