

Main Entrance – North East - outbound Side Lane



Concrete was poured too high during installation resulting in the plate not resting properly in the down position and also damaging the paint and the galvanizing coating

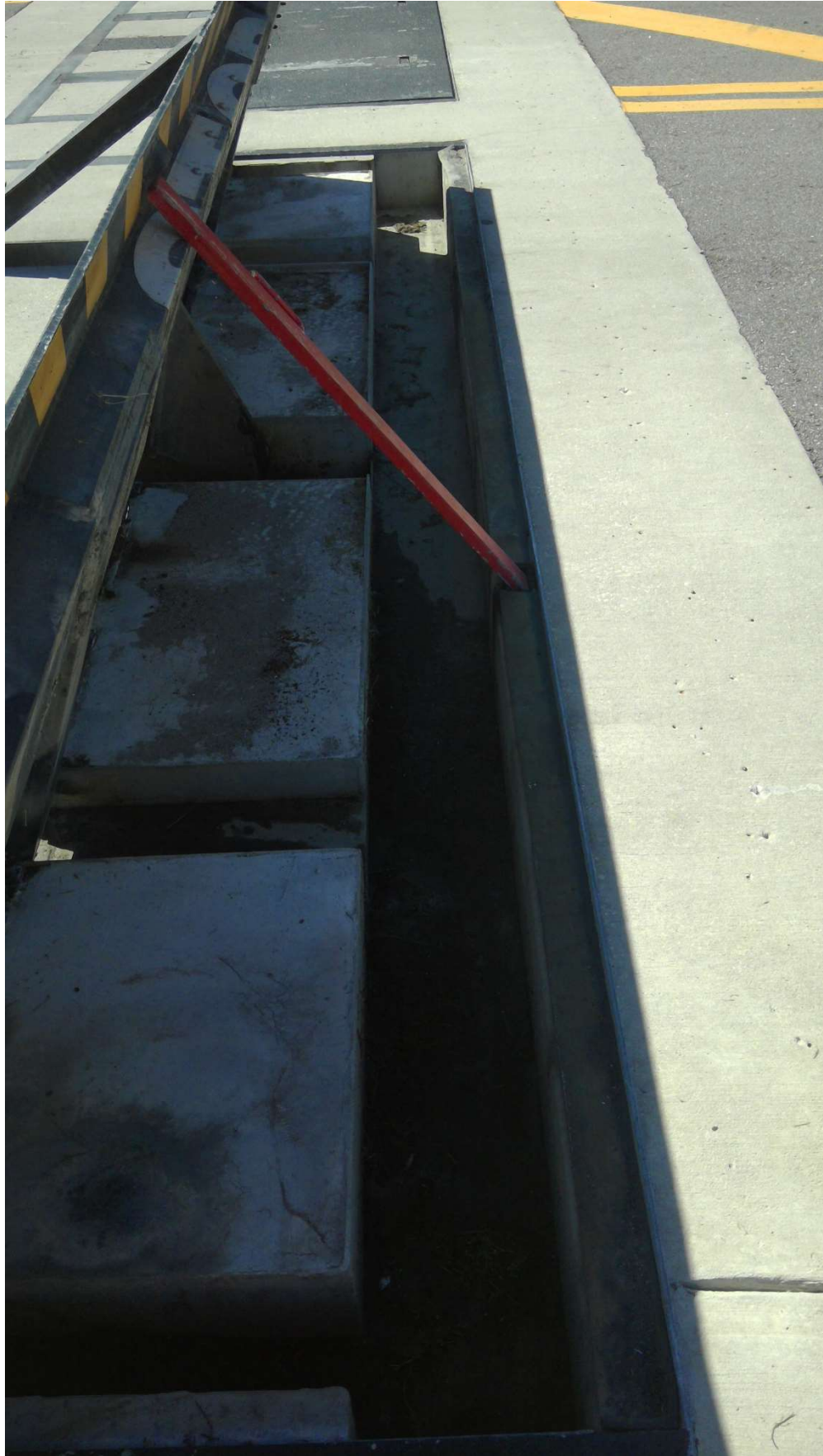
Resolution: grind the concrete down, touch up paint with yellow and black paint



Concrete was poured too high during installation resulting in the plate not resting properly in the down position and also damaging the paint and the galvanizing coating

Resolution: grind the concrete down, touch up paint with yellow and black paint









Main Entrance - Left side - Middle Lane





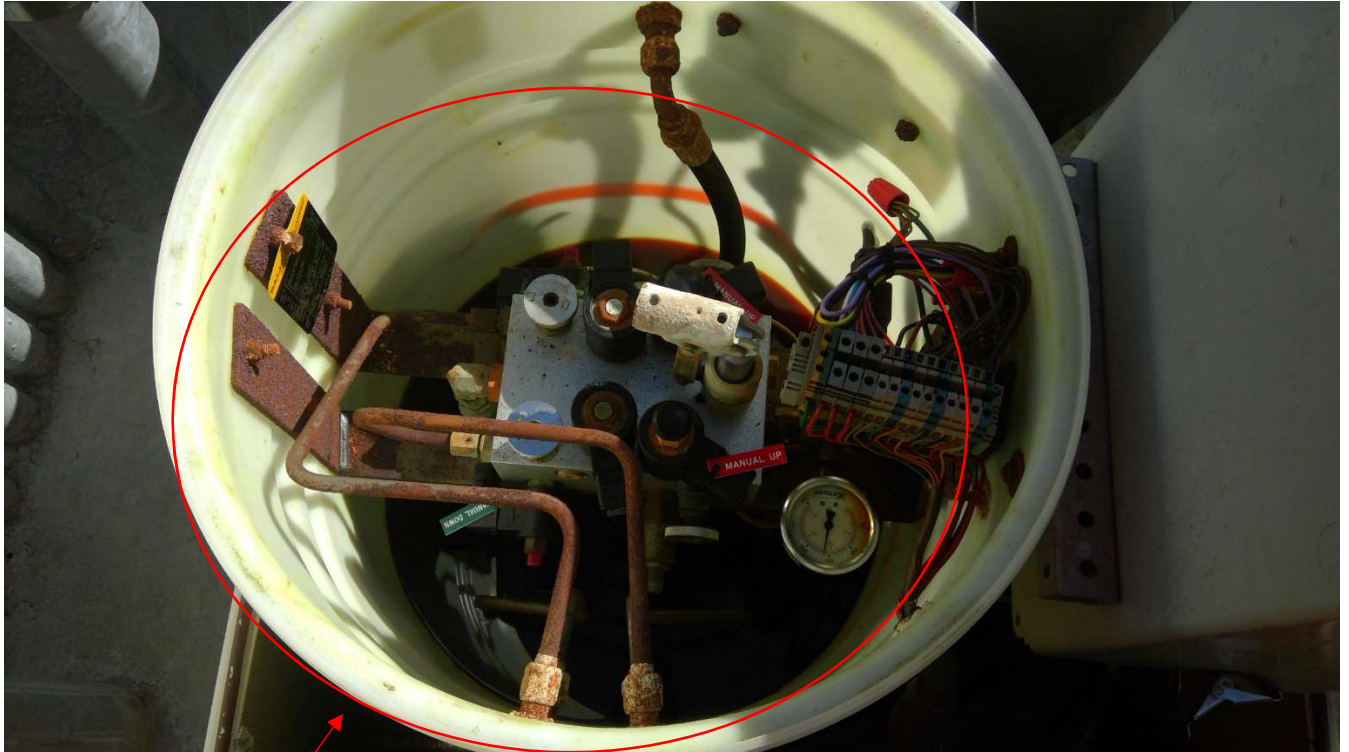


General Notes:

-Limit Sensors wiring is not properly terminated for below grade application. The cable should be shortened, terminations should be soldered, adhesive heat shrunk, and cable sleeved

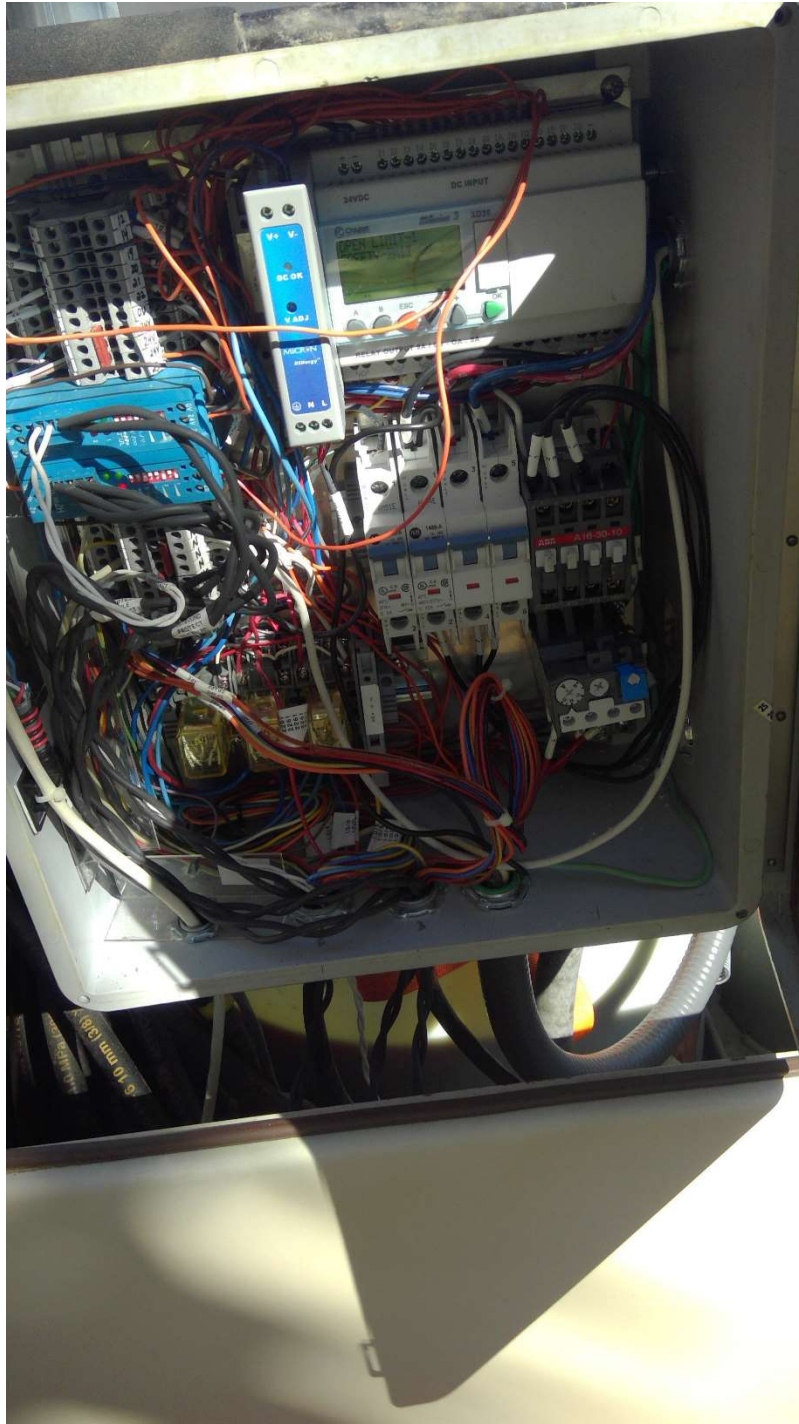
Rubber pads on the front of the barrier needs to be replaced

Main Entrance - Side/Middle – Power Unit



Hydraulic unit is complete disrepair. All the lines, hand pump, mounting, fitting are in a major state of degradation. It is suggested to replace the entire power unit before putting the barrier system into operation. The hydraulic lines should be replaced. The hydraulic cylinder needs to be taken apart and cleaned also.



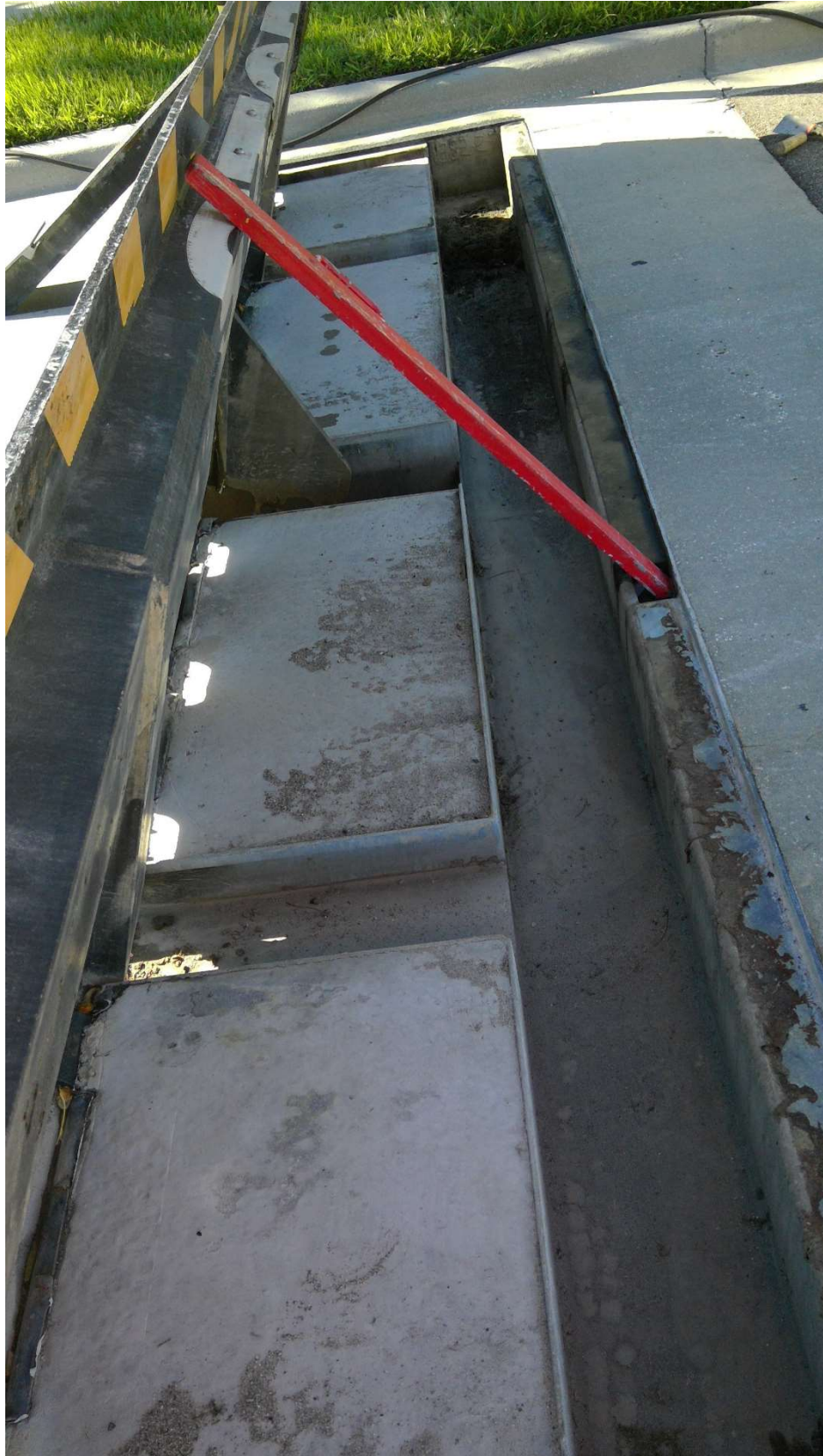


- General Notes:

- Hydraulic unit needs complete replacement
- This PLC panel needs to be removed and functionality migrated to master panel
- Noticeable rusting and paint chipping is on the outdoor enclosure. Full painting is suggested.

Main Entrance - Left side - Inbound Side Lane







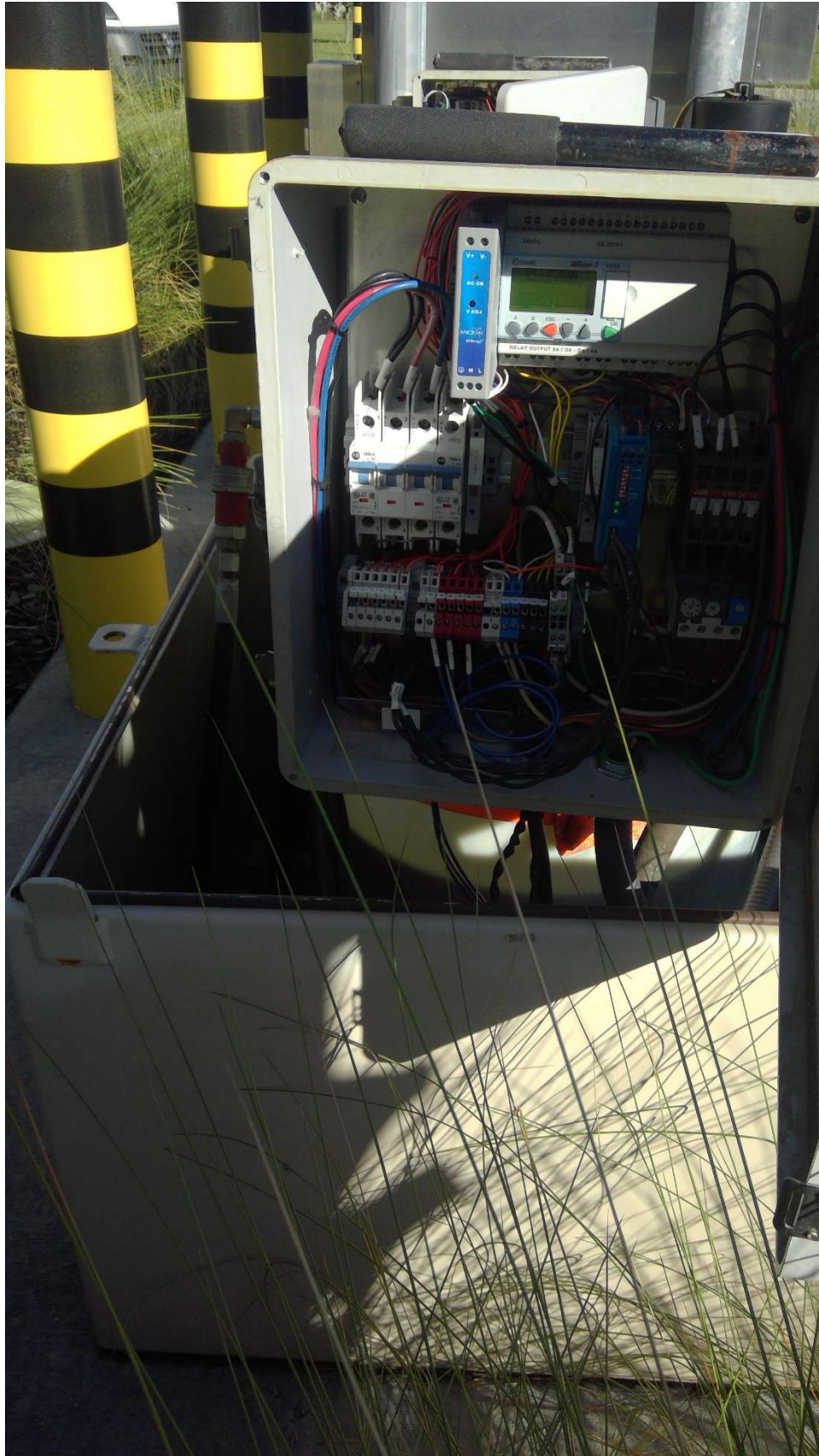
Concrete was poured too high during installation resulting in the plate not resting properly in the down position and also damaging the paint and the galvanizing coating

Resolution: grind the concrete down, touch up paint with yellow and black paint



Concrete was poured too high during installation resulting in the plate not resting properly in the down position and also damaging the paint and the galvanizing coating

Resolution: grind the concrete down, touch up paint with yellow and black paint



General Notes:

- Limit Sensors wiring is not properly terminated for below grade application. The cable should be shortened, terminations should be soldered, adhesive heat shrunk, and cable sleeved
- Hydraulic oil is extremely dirty. The oil, suction strainer needs to be replaced. The hydraulic hoses need to be blown out and flushed. The hydraulic drum needs to be wiped and cleaned thoroughly
- This PLC panel needs to be removed and functionality migrated to master panel
- Noticeable rusting and paint chipping is on the outdoor enclosure. The chipping spots at a minimum needs to be touched up. Full painting is suggested.
- Two areas of concrete need to be repaired
- Front rubber pad needs to be replaced