

Tuesday, January 30, 2018
11:53 AM

Warehouse Slide gate

Warehouse

Box style Cantilever Gate 30' +/-
HySecurity Slide Driver 10
Model #222 SSST
S/N: 011100-1117-649

Slide gate operator operates without fault codes and with minimum chain binding.

-Condition Found: 2 @ 4' Safety edge and Transmit and receive pair damaged from weatherization (See Figure 1 Below)

- **Action:** Replace Safety Edge and transmitter/Receiver pair on both bring up to UL325 standard and ensure safe gate operation

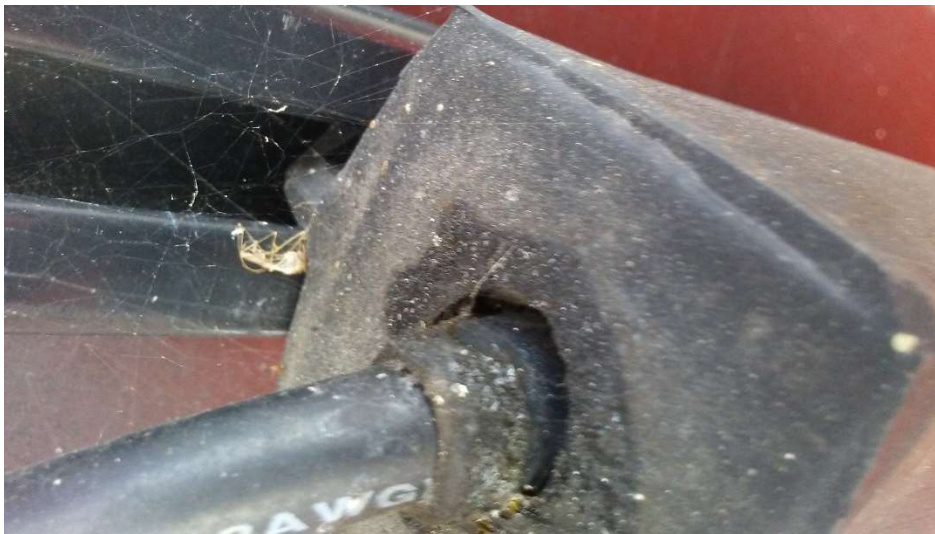


Figure 1 Safety Edge Transmit weatherized