

Monday, January 29, 2018
1:53 PM

Service Entry/Exit Gates

Entrance Lane

2 Leaf swing gate each leaf is 17'.6" Wide By 8' tall Entry Swing gate
Linear commercial duty swing gate operator
Model# SWG-283

- Swing gates are currently under contract to replace gate and re commission operator
- 1 @ 5' Millers Safety was damaged after the gate contract was awarded. (See Figure 2 Below)
- Action: Replace Safety Edge and transmitter/Receiver pair on both gates to bring up to UL325 standard and ensure safe gate operation

Exit Lane

Box style Cantilever Gate 80' +/-
Linear commercial duty slide gate operator
Model HSLG-183

Slide gate operator operates without fault codes and with minimum chain binding.

- -Chain is in poor condition. (See Figure 3)
- -Action: Replace with 60' of nickel plated #40 roller chain, lubricate sprockets and adjust as needed. This will ensure continued efficient operation and reduce the wear on the gate operator thereby

-



Figure 1 Swing gate operator



Figure 2 Damaged Safety Edge

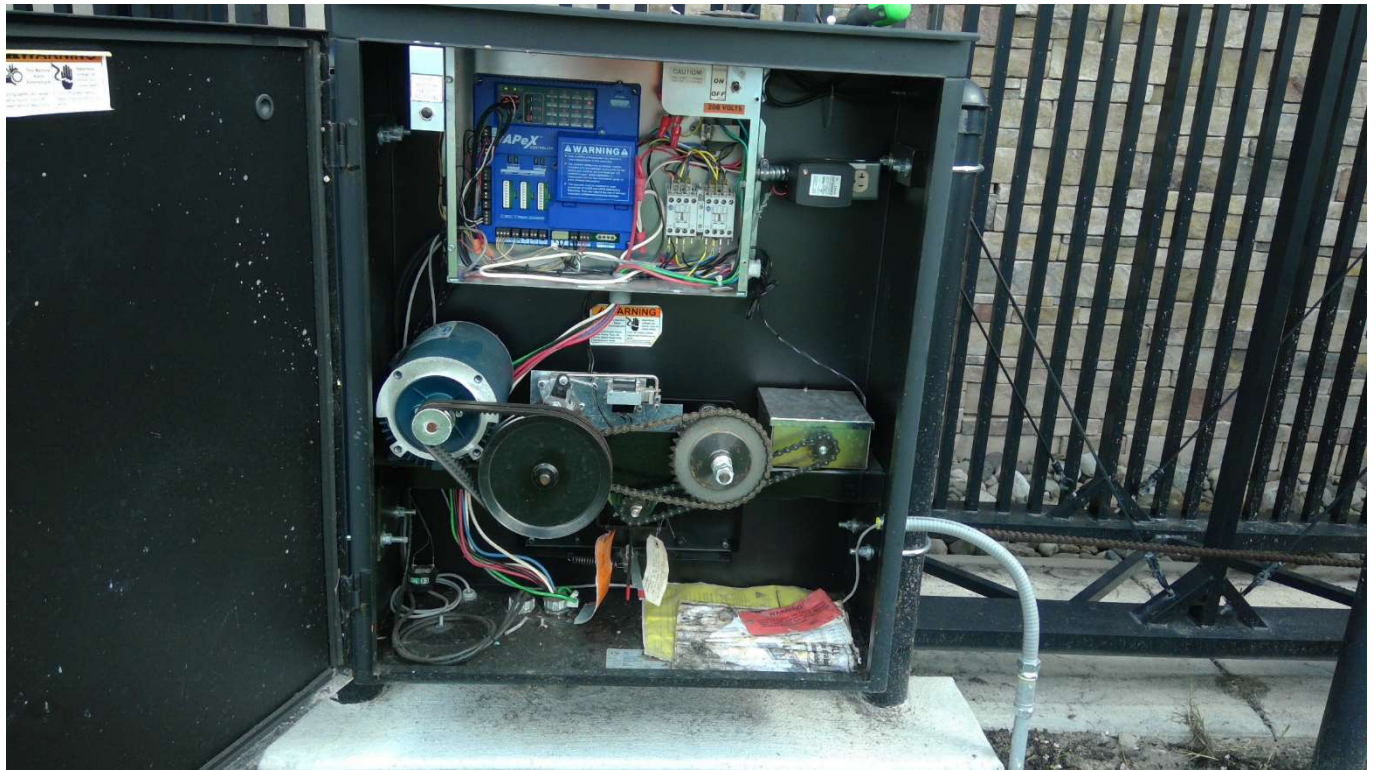


Figure 3 External Drive chain internal sprockets