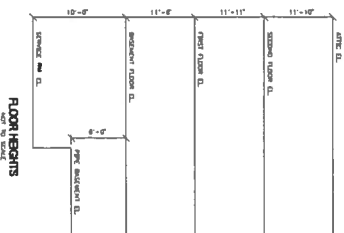


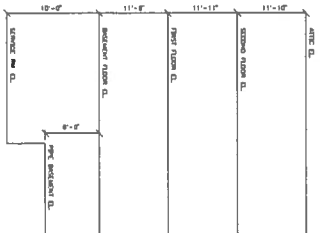
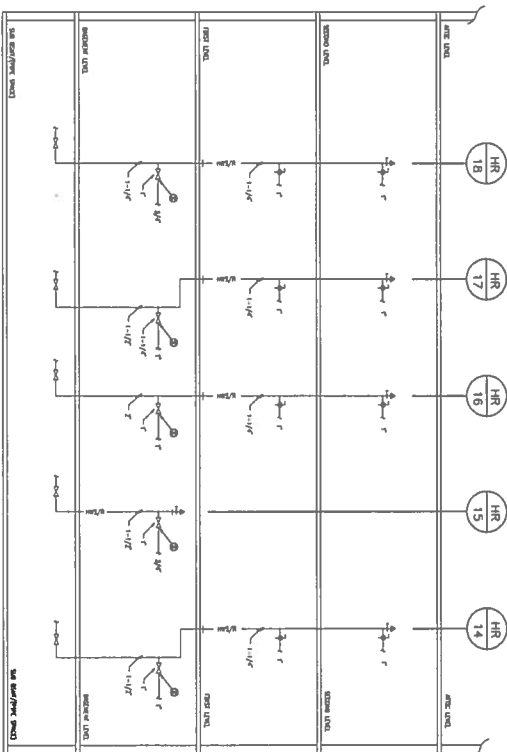
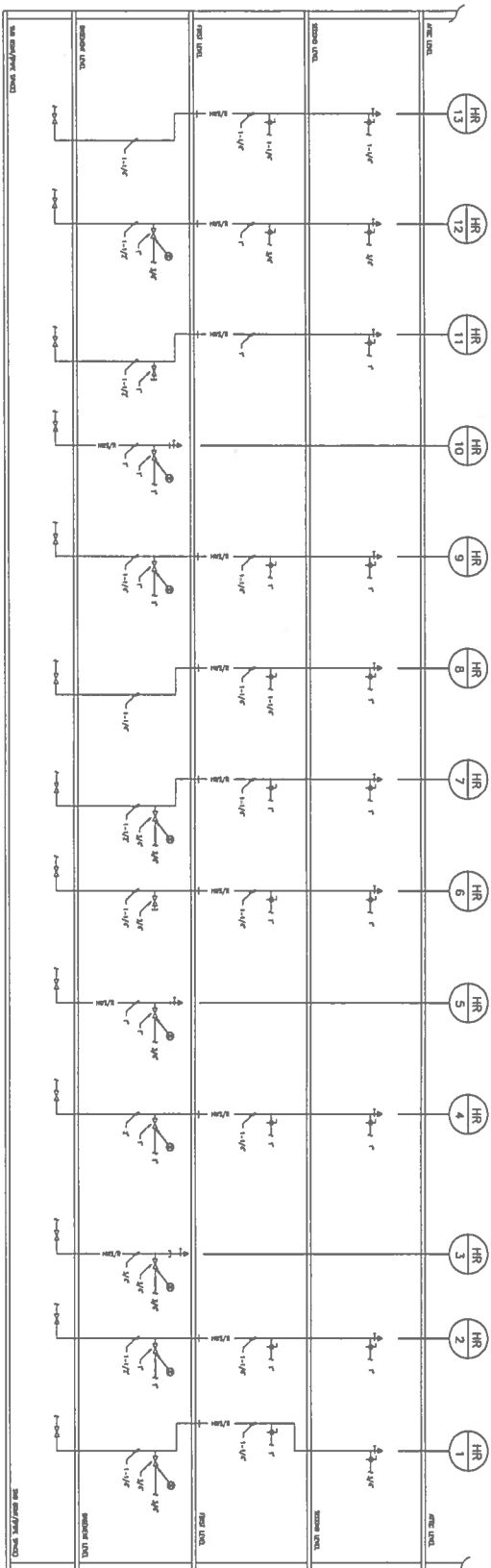
1 DUCT RISER DIAGRAMS - MECHANICAL  
SCALE: NOT TO SCALE



<p><b>CONSULTANTS:</b></p> <p><b>MCD</b></p> <p>1000 South Loop West, Suite 200, Houston, TX 77001          Tel: 713.464.2200          Fax: 713.464.2201          Email: info@mcdd.com          Website: www.mcdd.com</p>	<p><b>ARCHITECT ENGINEERS:</b></p> <p><b>PAULUS W. WILKINSON &amp; ASSOCIATES, P.C.</b></p> <p>1000 South Loop West, Suite 200, Houston, TX 77001          Tel: 713.464.2200          Fax: 713.464.2201          Email: info@mcdd.com          Website: www.mcdd.com</p>	<p><b>PROJECT MANAGER:</b></p> <p><b>MECHANICAL RISER DIAGRAMS - MECHANICAL</b></p>	<p><b>PROJECT MANAGER:</b></p> <p><b>MECHANICAL RISER DIAGRAMS - MECHANICAL</b></p>	<p><b>PROJECT MANAGER:</b></p> <p><b>MECHANICAL RISER DIAGRAMS - MECHANICAL</b></p>	<p><b>PROJECT MANAGER:</b></p> <p><b>MECHANICAL RISER DIAGRAMS - MECHANICAL</b></p>	<p><b>PROJECT MANAGER:</b></p> <p><b>MECHANICAL RISER DIAGRAMS - MECHANICAL</b></p>
---	--	---	---	---	---	---

BID DOCUMENTS

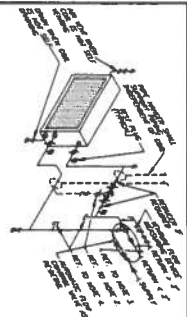
<p><b>CENTRAL TEXAS VETERANS HEALTHCARE SYSTEM</b></p>
--



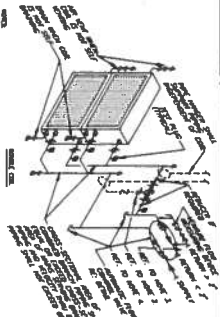
PIPE RISER DIAGRAMS - MECHANICAL  
SCALE: NOT TO SCALE

<b>CONSULTANTS:</b>  M&E Engineering, Inc. 1000 West 10th Street, Suite 200 Fort Worth, Texas 76102 Phone: (817) 499-1234 Fax: (817) 499-1235		<b>ARCHITECT ENGINEERS:</b>  PALMER WINTON HOOPER, INC. ARCHITECTS/ENGINEERS 1000 West 10th Street, Suite 200 Fort Worth, Texas 76102 Phone: (817) 499-1234 Fax: (817) 499-1235		<b>PROJECT INFORMATION:</b> PROJECT NAME: PIPING RISER DIAGRAMS - MECHANICAL PROJECT NUMBER: 1000 PROJECT LOCATION: 1000 West 10th Street, Suite 200 PROJECT DATE: 10/10/2010		<b>PROJECT TITLE:</b> PIPING RISER DIAGRAMS - MECHANICAL PROJECT NUMBER: 1000 PROJECT LOCATION: 1000 West 10th Street, Suite 200 PROJECT DATE: 10/10/2010		<b>PROJECT INFORMATION:</b> PROJECT NAME: PIPING RISER DIAGRAMS - MECHANICAL PROJECT NUMBER: 1000 PROJECT LOCATION: 1000 West 10th Street, Suite 200 PROJECT DATE: 10/10/2010		<b>PROJECT TITLE:</b> PIPING RISER DIAGRAMS - MECHANICAL PROJECT NUMBER: 1000 PROJECT LOCATION: 1000 West 10th Street, Suite 200 PROJECT DATE: 10/10/2010	
---	--	--	--	---	--	---	--	---	--	---	--

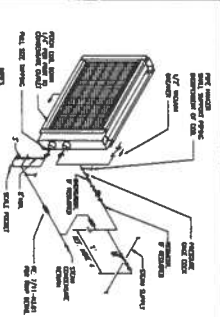




5 TYPICAL CONNECTIONS TO AHU WATER COILS  
NOT TO SCALE



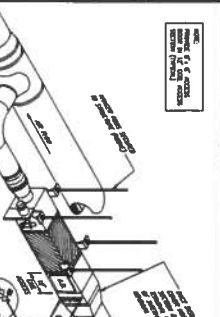
4 TYPICAL CONNECTIONS TO AIR/WATER COILS  
NOT TO SCALE  
07/81



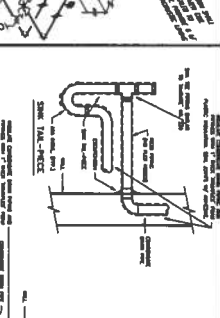
3  
WT/ST

NOT TO SCALE

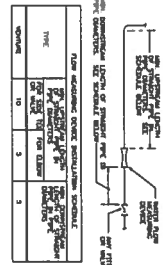
TYPICAL CONNECTION TO AHU STEAM COIL



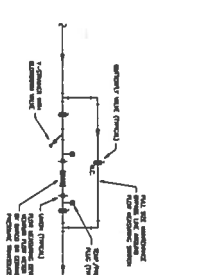
2 TYPICAL CONNECTIONS TO REHEAT COILS  
NOT TO SCALE  
N/241



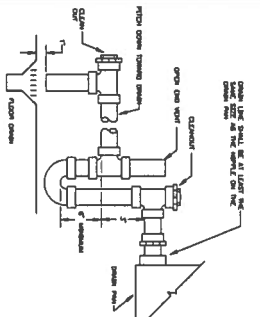
1 CONDENSATE PIPE TERMINATION  
NOT TO SCALE  
N/201



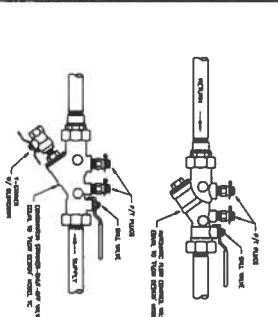
10 FLOW MEASURING DEVICE INSTALLATION REQUIREMENTS  
NOT TO SCALE



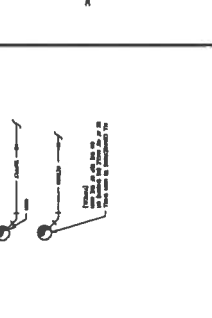
9 FLOW MEASURING STATION  
NOT TO SCALE



**8** AIR HANDLING UNIT CONDENSATE DRAIN  
NOT TO SCALE



7 AUTOMATIC FLOW CONTROL VALVE  
NOT TO SCALE



6 TYPICAL BRANCH CONN. TO MAIN  
NOT TO SCALE

CONSULTANTS:

**2001**

ARCHITECT/ENGINEERS

DRAWING TITLE

**DETAILS -**

**Project Title**  
**HRC BASEMENT RENOVATION**

800-4-A-DAIRY

CENTRAL TEXAS

800 North Central Exp., Suite 510 • Phoenix, AZ 85024  
PH 480.441.2200 FAX 480.441.2201  
Internet Registered Engineering Firm No. E-7489  
Member No. 17004

**PLUGER WIGINTON HOOBS, P.L.C.**  
ARCHITECTS / PLANNERS / CONSULTANTS  
400 N. Canal Highway, Suite 200  
Pompano Beach, FL 33061  
P: (772) 465-6127  
F: (772) 465-6165

## MECHANICAL PIPING

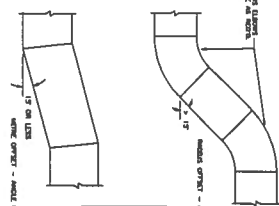
<p><b>PHONE 341.835</b></p> <p><b>TRAM ORDER NO. 8888</b></p>	<p><b>Location</b></p> <p><b>4801 MEDICAL DRIVE</b>  <b>WACO, TEXAS 76793</b></p>	<p><b>Date</b></p> <p><b>FEBRUARY 18, 2011</b></p>
---	---	--

	00	Design Number
M7.01		



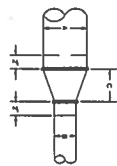
VETERANS  
HEALTHCARE  
SYSTEM



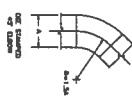
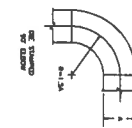


ANY DUCTWORK EXPOSED TO VIEW SHALL BE IMMEDIATELY UNDOUBTEDLY EXTREMELY NEATLY INSTALLED, REFER TO ARCHITECT FOR FINAL DUCTWORK SPECIFICATIONS. PROVIDE COORDINATED DUCT SYSTEMS AND TO OTHER MECHANICAL SYSTEMS.

DUCTWORK UNDERGROUND, ABOVE-GROUND, CONNECTION SHALL WITH THE FIRST AND SECOND FLOORS TO MATCH DUCTWORK INSTALLATION AND FINISH.

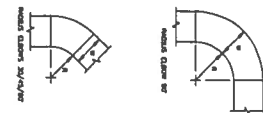


1. ONE DUCT: C = A + B
2. FLAT ONE DUCT: C = DIFFERENCE BETWEEN THE WAGON AIDS A AND THE WAGON AIDS B.

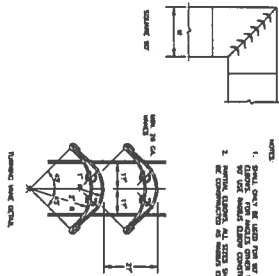


0-37	2	PIECES
26-17	3	PIECES
77-402	5	PIECES

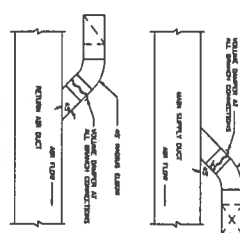
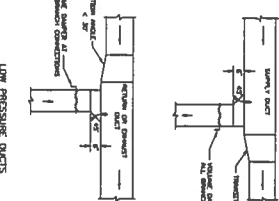
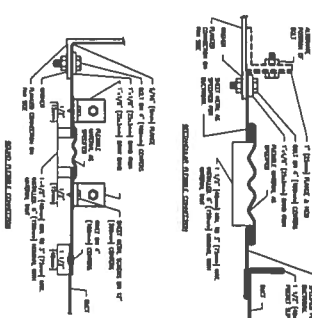
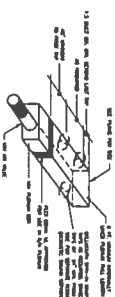
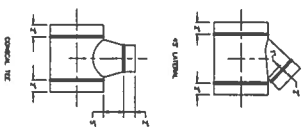
are FACTORS CHOSEN TO BE  
 SHALL BE INDIVIDUALLY LISTED WORKS  
 ORIGINALLY PERFORMED WITHIN 10  
 YEARS OF THE DATE OF THE  
 FEDERAL REGISTERATION, PROVIDED  
 CLAIMED ASSET WITHIN 10 YEARS OF  
 THE DATE OF THE FEDERAL REGISTERATION,  
 CONTRACTS, LICENSES, AGREEMENTS,  
 DOCUMENTS, DOCUMENTS, THE FIRST  
 DOCUMENT, REGISTRATION AND FIRST



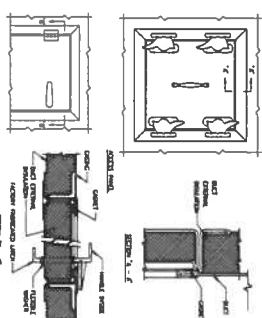
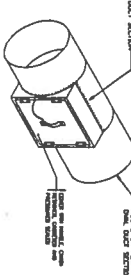
- NOTE: 1. PARTIAL BURNER. ALL TESTS SHALL BE CONDUCTED IN AN OPENED CLOUSE.  
2. # 5 IN BUCKS. 6-4



1. SHALL ONLY BE USED FOR RT CLERGY FOR AGENCIES OTHER THAN RT USE BARSIS FLOW CONSTRUCTION.
2. PARTIAL CLERGY, ALL SIZES SHALL BE CONSTRUCTED AS MEN'S CLERGY.

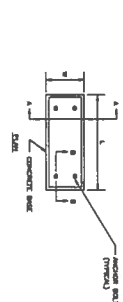


- CONDUIT AND SHIELD  
NOTES: 1. RECOMMEND 30MM. CIRCULAR SHIELD.  
LOW PRESSURE DUCTS

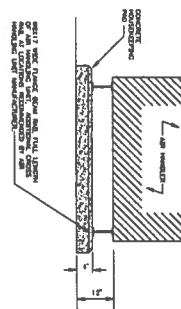


1. JUDGES SHALL BE OF THE ORDER TRYING TO OBTAIN ANSWERS RAPIDLY.
2. REQUESTS FOR AN ACCESS BOOKS SHALL NOT BE CONSIDERED FIVE.
3. ACCESS BOOKS SHALL NOT BE PROVIDED INTO APPROVAL.

[illegible]

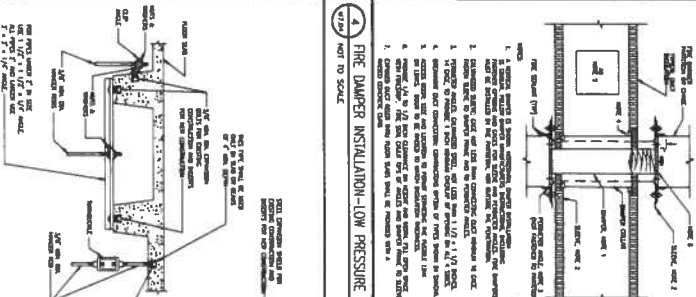


5 TYP. EQUIPMENT BASE PLATE  
NOT TO SCALE  
8/12/04

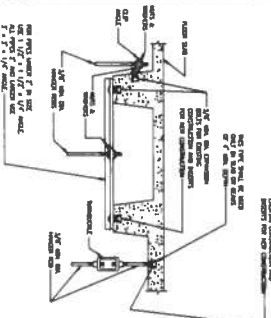


1. HOUSE REPLYING AND TALKING TO ORIGINAL LOCATION AND REPLY FROM CURRENT SURVEILLANCE.

9 TYP AIR HANDLING UNIT SUPPORT  
NOT TO SCALE  
W/24

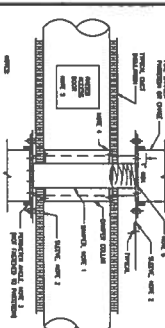
[illegible]

4 FIRE DAMPER INSTALLATION-LOW PRESSURE DUCTS  
NOT TO SCALE  
07/06



FOR SPOTS UNDER  $T^*$  IN SIZE  
USE  $1/\sqrt{T^*} = 1/\sqrt{2} = 1/\sqrt{e}$  AND  
ALL SPOTS  $T^*$  AND UNDER USE  
 $T = T^* = 1/\sqrt{e}$  INSTEAD.

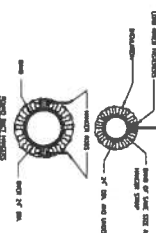
8 TYPICAL METHOD OF SECURING HANGER RODS  
NOT TO SCALE

[illegible]

3 FIRE DAMPER INSTALLATION-MEDIUM PRESSURE DUCTS  
NOT TO SCALE

[illegible]

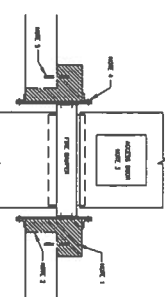
7 DUCT SUPPORTS IN CONCEALED LOCATIONS  
NOT TO SCALE



FACILITY SITES AND NOTES		
DATE ELECT BY	LOCATION	WELL CLOS LBS.
10/1	CHG 1' x 22' x 12' SHAP	200
10/1	IND 1/2" x 12' x 12' SHAP	400
10/1	IND 1/2" x 12' x 12' SHAP	100

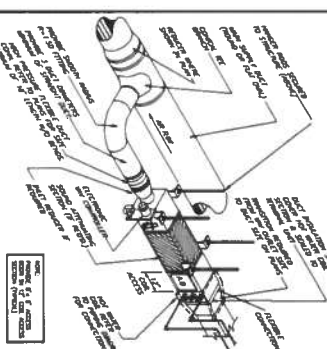
1. what problems you need to solve
2. try to find the answer in research paper

2 FIRE DAMPER INSTALLATION-IN FLOOR SLAB  
NOT TO SCALE



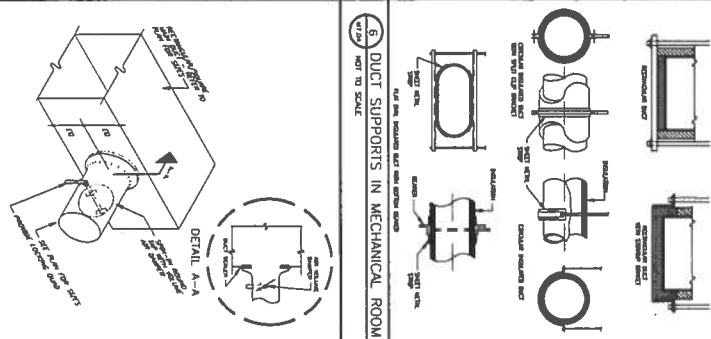
1. CONDUCT CLASS OF 1991, 2. READ AND DISCUSS THE SCENARIOS AND START THE EVALUATION OF THE SCENARIOS.
3. LIST OF TOPICS: PREPARE IN CLASS.
4. ASSIGN TOPIC TO BE PREPARED INDIVIDUALLY AFTER MEETING STARTS.
5. USE 30 MIN AND 1.17 = 1.17% CRIMINAL ACTS ASSIGNED TO STUDENT. (10% FOR 1991 AND 1992, 50% TO STUDENT AND 40% FOR CLASS).
6. STUDENT DEVELOPS 1991 AND 1992 IN 1991. 10% CRIMINAL ACTS FOR 1991.
7. STUDENT STARTS TO MEET CONDITIONS. SHALL BE 1991. STUDENT 1-1991. CONDITIONS

2 FIRE DAMPER INSTALLATION-IN FLOOR SLAB  
NOT TO SCALE



11 VAV TERMINAL BOX DETAIL  
NOT TO SCALE

### CONCEALED LOCATIONS



6 DUCT SUPPORTS IN MECHANICAL ROOM  
NOT TO SCALE

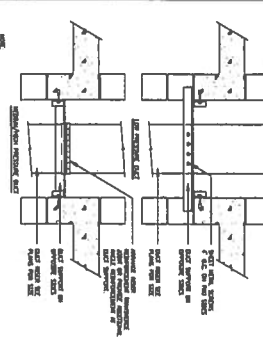
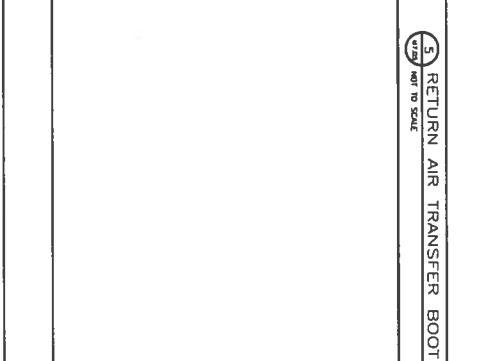
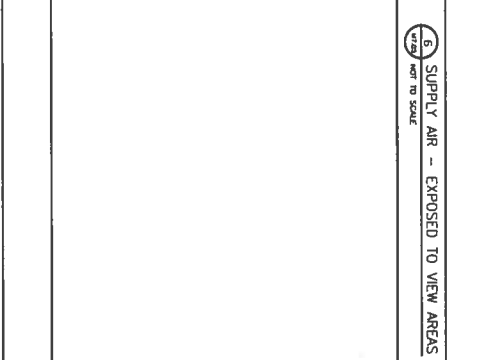
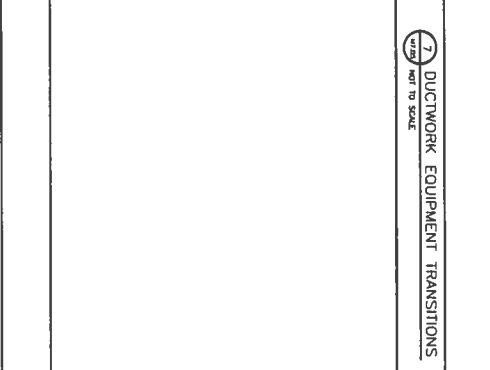
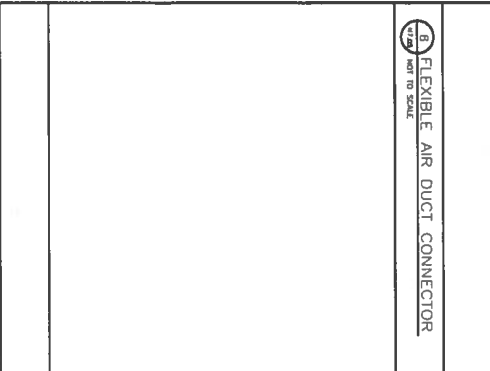
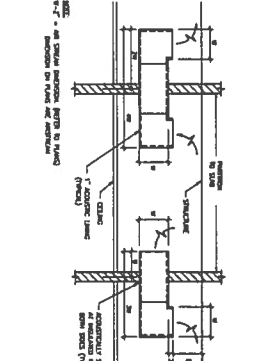
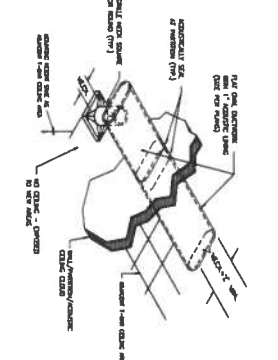
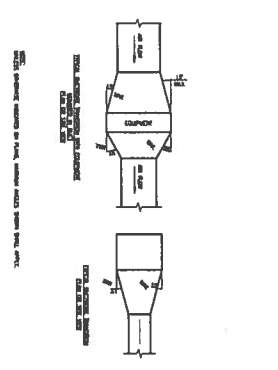
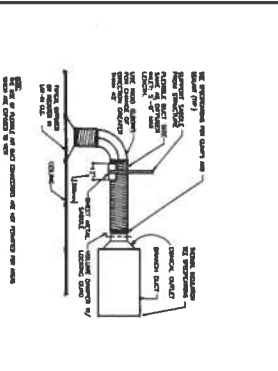
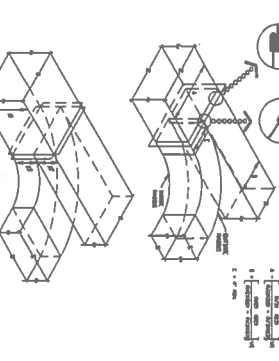
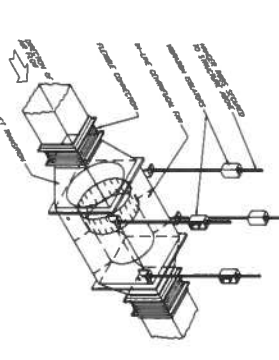
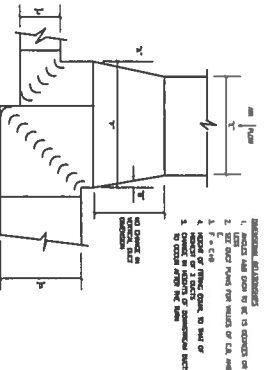
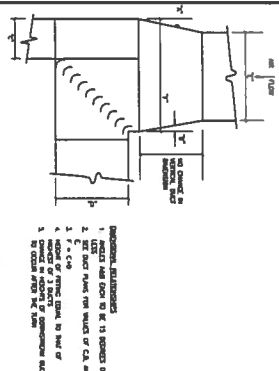


Figure 1. A three-phase, four-wire, 480-volt, 60-Hz power system.

1  
41204

DUCT RISER SUPPORTS

NOT TO SCALE



**A. Continue to adding every management control loop feature**

- © 2000 Intel Corporation. Intel, the Intel logo, and Pentium are registered trademarks or trademarks of Intel Corporation or its subsidiaries in the United States and other countries. V-Pro is a registered trademark of Intel Corporation.

**Product of the**

- Abstract**

**Each day will be**  
**an exciting day**

- #### A. Doing public or social questions in a way that is not in the best

**1. The following are the names of the members of the committee:**

- #### 4.1. Problem Context

**100% MONEY BACK GUARANTEE**

- ## References

Value of  $\alpha$

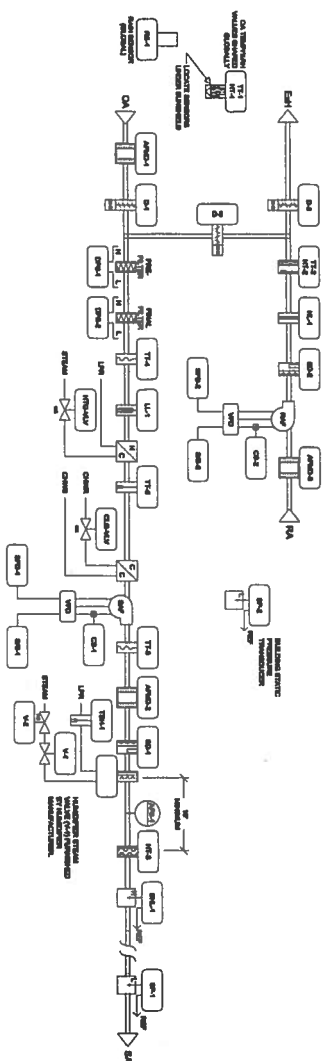
## NAME \_\_\_\_\_

- 7

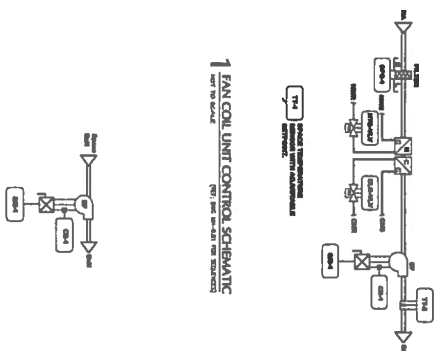
**Product Name:**

- 6 —





## 2 VAV AIR HANDLING UNIT CONTROL SCHEMATIC NOT TO SCALE



### 3 GENERAL EXHAUST CONTROL SCHEMATIC

[illegible][illegible]

**CONSULTANTS:**



800 North Center Exp., Suite 110, P.O. Box 10344  
 Ft. Worth, TX 76116  
 Tel: 817/342-2200  
 Telex: 740000 Engtelex Int'l  
 Fax: 817/342-2200



**FO**  
 AACCTCTT / PLASMA CONTROL UNIT  
 400 N. Oxford Highway, Suite 400  
 Rock, Texas 78067

ARCHITECT/ENGINEERS

## MECHANICAL SYSTEM CONTROLS

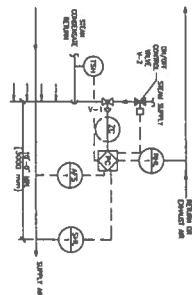
## HEAVY METAL REMEDIATION -

800-4-A-TRUCK

CENTRAL TEXAS

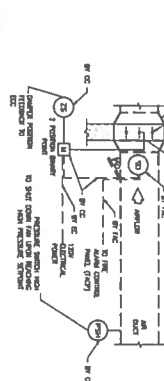
SYSTEM

SYSTEM



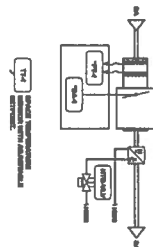
**STAY AWAY FROM THE BAR.** If a member shall be observed to go to a club, bar, restaurant, or other place of entertainment, he shall be fined \$100.00. If a member shall be observed to go to a club, bar, restaurant, or other place of entertainment, he shall be fined \$100.00. If a member shall be observed to go to a club, bar, restaurant, or other place of entertainment, he shall be fined \$100.00.

### 3 STEAM HUMIDIFIER CONTROLS NOT TO SCALE

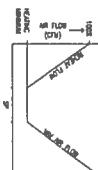


REPLY:  
UPON RECESSION OF BOND BY THE SMOKE COLLECTION, THE SMOKE PURCHASER SHALL CLOSE A BOND IN ADVANCE TO THE ETC.

## 2 SMOKE DAMPER CONTROL DIAGRAM NOT TO SCALE



A. SET POINTS SHALL BE SET AS FOLLOWS:  
 COOLING 75°F (24°C)  
 HEATING 70°F (21°C)  
 DEADBAND OF 5°F BETWEEN HEATING AND COOLING SET POINTS WILL BE MAINTAINED  
 8. UPON FALL IN SPACE TEMPERATURE THE HVAC SYSTEM WILL AUTOMATICALLY INCREASE FLOW RATE TO MAINTAIN SET POINTS.



A. SIX POINTS SHALL BE SET AS FOLLOWS:  
 COASTAL PRT (404)  
 HEADING (370104)  
 DECKING OF 5 F. ELEVATED HEADING AND  
 COASTAL PRT (404) SHALL BE UNCHANGED.  
 B. UPPER FILL IN SPACE REPRESENTING THE  
 NEW DECKING WILL CORRELATE TO UPPER  
 PORTION.  
 C. UPPER FILLER BODY IN SPACE  
 REPRESENTING DECKING WILL CORRELATE  
 TO UPPER PRT (404) 5, 6, 7. THE  
 DECKING WILL BE UNCHANGED.  
 D. LOWER FILLER BODY IN SPACE  
 REPRESENTING DECKING WILL CORRELATE  
 TO LOWER PRT (404) 1, 2, 3, 4, 5, 6, 7, 8, 9, 10, 11, 12, 13, 14, 15, 16, 17, 18, 19, 20, 21, 22, 23, 24, 25, 26, 27, 28, 29, 30, 31, 32, 33, 34, 35, 36, 37, 38, 39, 40, 41, 42, 43, 44, 45, 46, 47, 48, 49, 50, 51, 52, 53, 54, 55, 56, 57, 58, 59, 60, 61, 62, 63, 64, 65, 66, 67, 68, 69, 70, 71, 72, 73, 74, 75, 76, 77, 78, 79, 80, 81, 82, 83, 84, 85, 86, 87, 88, 89, 90, 91, 92, 93, 94, 95, 96, 97, 98, 99, 100, 101, 102, 103, 104, 105, 106, 107, 108, 109, 110, 111, 112, 113, 114, 115, 116, 117, 118, 119, 120, 121, 122, 123, 124, 125, 126, 127, 128, 129, 130, 131, 132, 133, 134, 135, 136, 137, 138, 139, 140, 141, 142, 143, 144, 145, 146, 147, 148, 149, 150, 151, 152, 153, 154, 155, 156, 157, 158, 159, 160, 161, 162, 163, 164, 165, 166, 167, 168, 169, 170, 171, 172, 173, 174, 175, 176, 177, 178, 179, 180, 181, 182, 183, 184, 185, 186, 187, 188, 189, 190, 191, 192, 193, 194, 195, 196, 197, 198, 199, 200, 201, 202, 203, 204, 205, 206, 207, 208, 209, 210, 211, 212, 213, 214, 215, 216, 217, 218, 219, 220, 221, 222, 223, 224, 225, 226, 227, 228, 229, 230, 231, 232, 233, 234, 235, 236, 237, 238, 239, 240, 241, 242, 243, 244, 245, 246, 247, 248, 249, 250, 251, 252, 253, 254, 255, 256, 257, 258, 259, 260, 261, 262, 263, 264, 265, 266, 267, 268, 269, 270, 271, 272, 273, 274, 275, 276, 277, 278, 279, 280, 281, 282, 283, 284, 285, 286, 287, 288, 289, 290, 291, 292, 293, 294, 295, 296, 297, 298, 299, 300, 301, 302, 303, 304, 305, 306, 307, 308, 309, 310, 311, 312, 313, 314, 315, 316, 317, 318, 319, 320, 321, 322, 323, 324, 325, 326, 327, 328, 329, 330, 331, 332, 333, 334, 335, 336, 337, 338, 339, 340, 341, 342, 343, 344, 345, 346, 347, 348, 349, 350, 351, 352, 353, 354, 355, 356, 357, 358, 359, 360, 361, 362, 363, 364, 365, 366, 367, 368, 369, 370, 371, 372, 373, 374, 375, 376, 377, 378, 379, 380, 381, 382, 383, 384, 385, 386, 387, 388, 389, 390, 391, 392, 393, 394, 395, 396, 397, 398, 399, 400, 401, 402, 403, 404, 405, 406, 407, 408, 409, 410, 411, 412, 413, 414, 415, 416, 417, 418, 419, 420, 421, 422, 423, 424, 425, 426, 427, 428, 429, 430, 431, 432, 433, 434, 435, 436, 437, 438, 439, 440, 441, 442, 443, 444, 445, 446, 447, 448, 449, 450, 451, 452, 453, 454, 455, 456, 457, 458, 459, 460, 461, 462, 463, 464, 465, 466, 467, 468, 469, 470, 471, 472, 473, 474, 475, 476, 477, 478, 479, 480, 481, 482, 483, 484, 485, 486, 487, 488, 489, 490, 491, 492, 493, 494, 495, 496, 497, 498, 499, 500, 501, 502, 503, 504, 505, 506, 507, 508, 509, 510, 511, 512, 513, 514, 515, 516, 517, 518, 519, 520, 521, 522, 523, 524, 525, 526, 527, 528, 529, 530, 531, 532, 533, 534, 535, 536, 537, 538, 539, 540, 541, 542, 543, 544, 545, 546, 547, 548, 549, 550, 551, 552, 553, 554, 555, 556, 557, 558, 559, 560, 561, 562, 563, 564, 565, 566, 567, 568, 569, 570, 571, 572, 573, 574, 575, 576, 577, 578, 579, 580, 581, 582, 583, 584, 585, 586, 587, 588, 589, 590, 591, 592, 593, 594, 595, 596, 597, 598, 599, 600, 601, 602, 603, 604, 605, 606, 607, 608, 609, 610, 611, 612, 613, 614, 615, 616, 617, 618, 619, 620, 621, 622, 623, 624, 625, 626, 627, 628, 629, 630, 631, 632, 633, 634, 635, 636, 637, 638, 639, 640, 641, 642, 643, 644, 645, 646, 647, 648, 649, 650, 651, 652, 653, 654, 655, 656, 657, 658, 659, 660, 661, 662, 663, 664, 665, 666, 667, 668, 669, 670, 671, 672, 673, 674, 675, 676, 677, 678, 679, 680, 681, 682, 683, 684, 685, 686, 687, 688, 689, 690, 691, 692, 693, 694, 695, 696, 697, 698, 699, 700, 701, 702, 703, 704, 705, 706, 707, 708, 709, 710, 711, 712, 713, 714, 715, 716, 717, 718, 719, 720, 721, 722, 723, 724, 725, 726, 727, 728, 729, 730, 731, 732, 733, 734, 735, 736, 737, 738, 739, 740, 741, 742, 743, 744, 745, 746, 747, 748, 749, 750, 751, 752, 753, 754, 755, 756, 757, 758, 759, 760, 761, 762, 763, 764, 765, 766, 767, 768, 769, 770, 771, 772, 773, 774, 775, 776, 777, 778, 779, 780, 781, 782, 783, 784, 785, 786, 787, 788, 789, 790, 791, 792, 793, 794, 795, 796, 797, 7

**1 VARIABLE VOLUME AIR TERMINAL CONTROL DIAGRAM**  
NOT TO SCALE

[illegible][illegible][illegible]