



# Department of Veterans Affairs

## DRAWING INDEX

### GENERAL

001 COVER SHEET AND DRAWING INDEX

### CIVIL

010 CIVIL EXISTING SITE AND DEMOLITION PLAN  
012 CIVIL PROPOSED SITE PLAN

### STRUCTURAL

001 ABBREVIATIONS AND NOTES  
F101 FOUNDATION PLAN  
F111 FLOOR FRAMING PLAN

FX001  
FX111

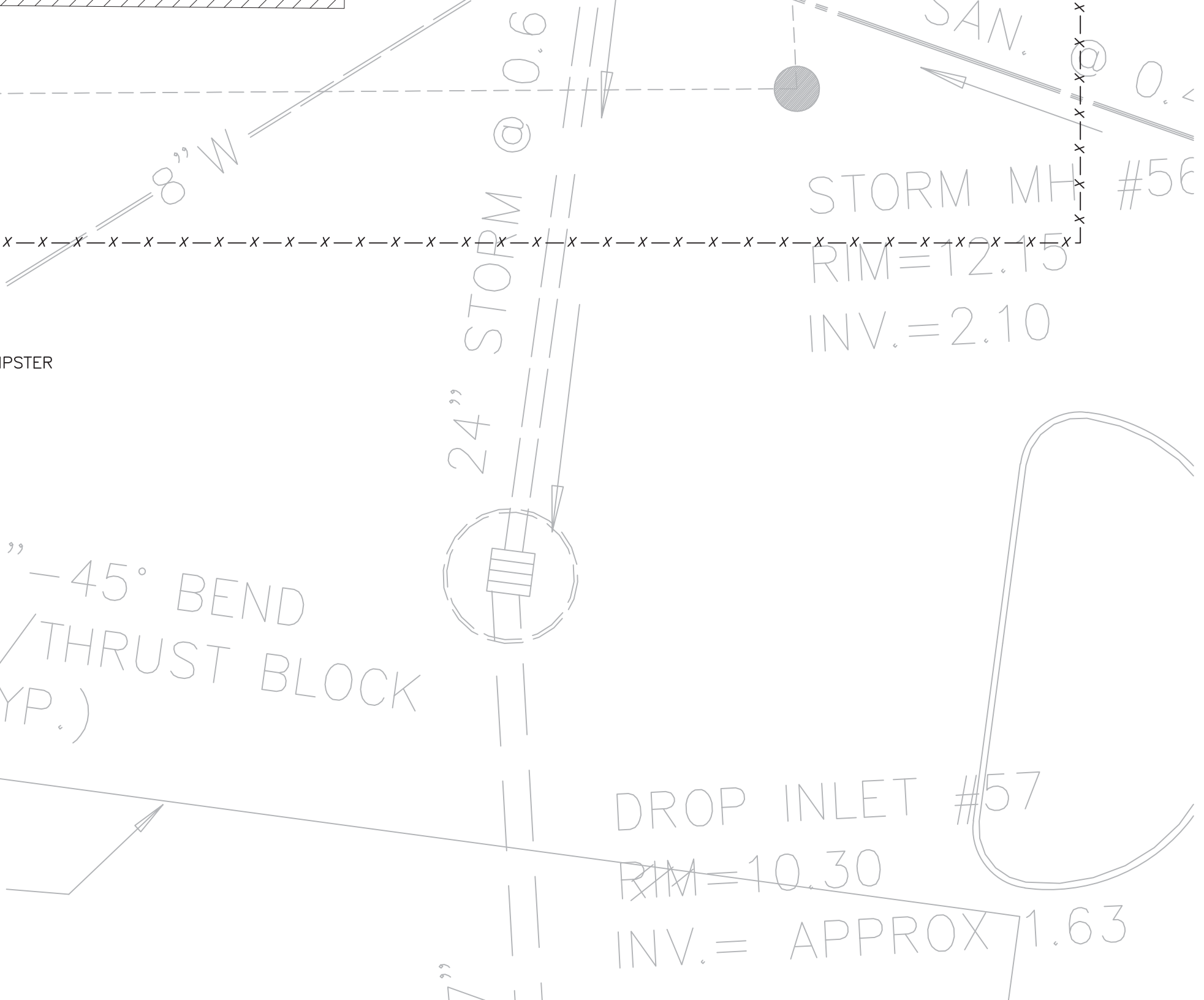
P-001  
PD111  
P111  
P112  
P121  
P500

### FIRE PROTECTION

FIRE PROTECTION GENERAL NOTES, LEGEND & DET  
FIRE PROTECTION FLOOR PLAN

### PLUMBING

PLUMBING GENERAL NOTES, SYMBOLS, AND ABBREV  
PLUMBING DEMOLITION FLOOR PLAN  
PLUMBING SANITARY, VENT, AND STORM WATER PL  
PLUMBING DOMESTIC WATER PLAN  
PLUMBING ROOF PLAN  
PLUMBING SCHEDULES, DETAILS, AND RISER AND FL



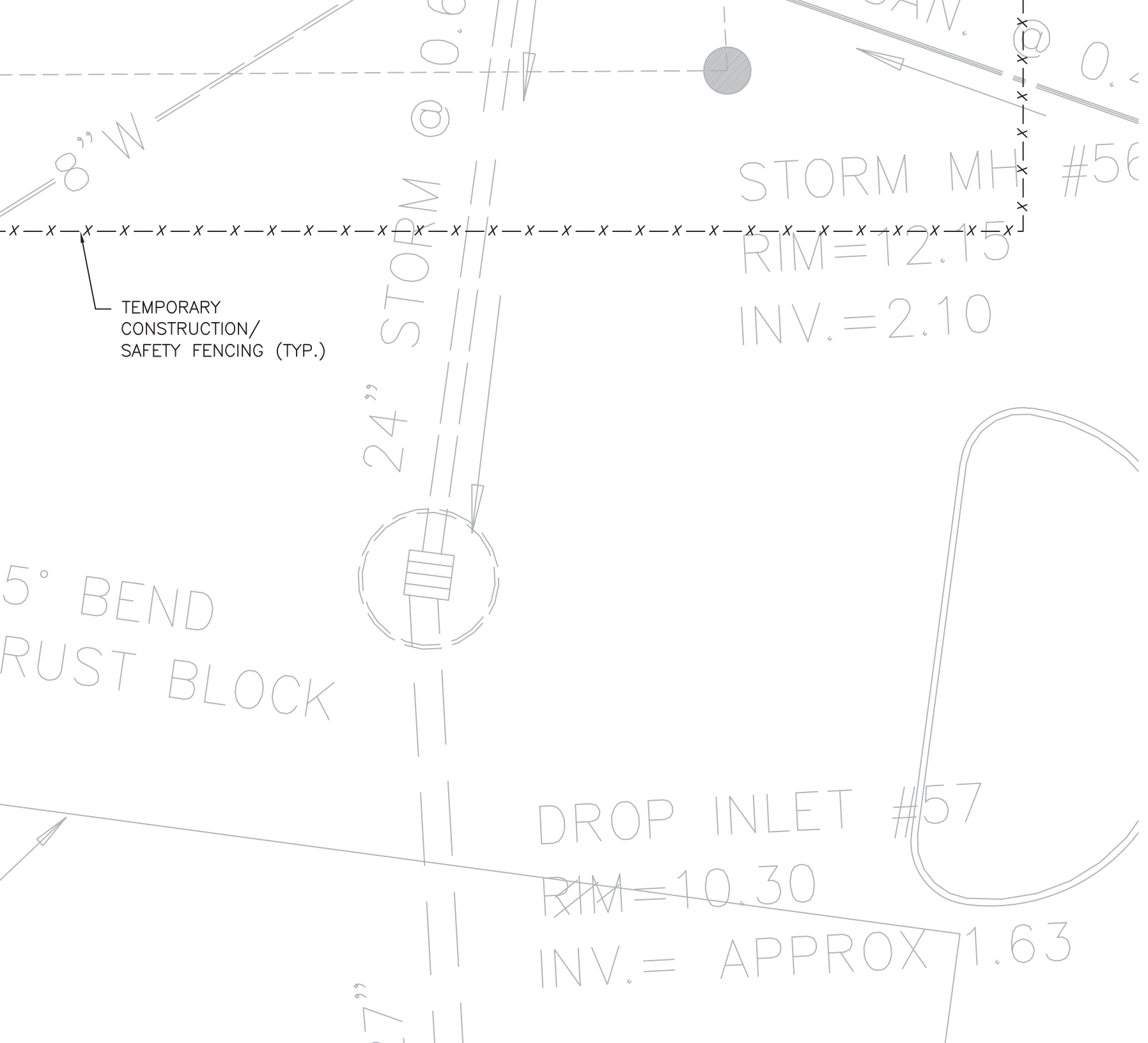
24" STORM @ 0.6

SAN. @ 0.4  
STORM MH #56  
RIM=12.15  
INV.=2.10

IPSTER

45° BEND  
/THRUST BLOCK  
(YP.)

DROP INLET #57  
RIM=10.30  
INV.= APPROX 1.63



CLASS "B"  
CONCRETE

4" COMPACT  
CRUSHED ST

MECHANICAL

AS INDICATED

B. SEISMIC:

VA SEISMIC NO.	850 (L)
OCCUPANCY CATEGORY	II (ANCILLARY FACILITIES)
DESIGN CATEGORY	B
IMPORTANT FACTOR $I_e$	1.0
SOIL SITE CLASSIFICATION	E
SITE COEFFICIENT, $F_a$	2.5
SITE COEFFICIENT, $F_v$	3.5

C. WIND LOAD:

BASIC WIND SPEED (V)	116 MPH (CAT. II)
EXPOSURE CATEGORY	B
IMPORTANT FACTOR $I_W$	1.15

DELEGATED DESIGN

1. SUBMIT STRUCTURAL CALCULATIONS PREPARED AND SEALED BY A QUALIFIED ENGINEER REGISTERED IN THE STATE WHERE THE PROJECT IS LOCATED FOR ALL DELICATED DESIGN AND PERFORMANCE SPEC ITEMS. SUBMIT CALCULATIONS FOR REVIEW BEFORE PREPARATION OF DETAIL SHOP DRAWINGS.

EXISTING CONDITIONS

1. ALL DIMENSIONS, ELEVATIONS AND PHYSICAL CONDITIONS SHOWN ON THE DRAWINGS FOR EXISTING STRUCTURES ARE BASED ON LIMITED FIELD INSPECTIONS AND OTHER AVAILABLE SOURCES. SUCH DEPICTIONS OF EXISTING CONSTRUCTION ARE INTENDED TO BE GENERAL, APPROXIMATE AND LIMITED TO THOSE AREAS FOR WHICH WORK IS REQUIRED, AND ARE PROVIDED ONLY FOR THE CONVENIENCE OF THE CONTRACTOR. PRIOR TO BIDDING, CONDUCT A CAREFUL EXAMINATION OF EXISTING CONDITIONS AT THE SITE APPLICABLE TO THE WORK.
2. THE EXACT EXTENT OF THE CONSTRUCTION WORK CANNOT BE NECESSARILY OR ACCURATELY DETERMINED PRIOR TO COMMENCEMENT OF WORK. ACTUAL FIELD CONDITIONS MAY REQUIRE MODIFICATIONS TO THE CONSTRUCTION DETAILS, MATERIAL QUANTITIES AND EXTENT OF THE MODIFICATION WORK SHOWN ON CONTRACT DRAWINGS. PERFORM THE WORK TO MEET FIELD CONDITIONS ENCOUNTERED.
3. EXAMINE AND FIELD VERIFY ALL EXISTING AND GIVEN DIMENSIONS AND CONDITIONS PRIOR TO COMMENCEMENT OF THE WORK AND FABRICATION OF CONSTRUCTION MATERIALS. REPORT VARIANCES FROM THE DRAWINGS AND SPECIFICATIONS AND POTENTIAL INTERFERENCES PROMPTLY TO THE COR. INCORPORATE ACTUAL FIELD CONDITIONS AND DIMENSIONS IN THE WORK AND INDICATE CHANGES AND ADJUSTMENTS ON DRAWINGS SUBMITTED FOR APPROVAL.
4. STAIRS, RAILING, LANDINGS AND ALL CONNECTIONS SHALL BE DESIGNED BY THE SUPPLIER ENGINEER FOR A LIVE LOAD OF 100 PSF. TREADS SHALL BE DESIGNED FOR A 300 POUND POINT LOAD DISTRIBUTED OVER 4 SQUARE INCHES. ALL HANDRAILS SHALL BE DESIGNED FOR A LATERAL LOAD OF 50 PLF APPLIED TO THE TOP OF THE RAIL OR A 200 POUND LOAD AT ANY POINT IN ANY DIRECTION WHICHEVER GOVERNS THE DESIGN.

EXISTING CONDITIONS

1. ALL DIMENSIONS, ELEVATIONS AND PHYSICAL CONDITIONS SHOWN ON THE DRAWINGS FOR EXISTING STRUCTURES ARE BASED ON LIMITED FIELD INSPECTIONS AND OTHER AVAILABLE SOURCES. SUCH DEPICTIONS OF EXISTING CONSTRUCTION ARE INTENDED TO BE GENERAL, APPROXIMATE AND LIMITED TO THOSE AREAS FOR WHICH WORK IS REQUIRED, AND ARE PROVIDED ONLY FOR THE CONVENIENCE OF THE CONTRACTOR. PRIOR TO BIDDING, CONDUCT A CAREFUL EXAMINATION OF EXISTING CONDITIONS AT THE SITE APPLICABLE TO THE WORK.
2. THE EXACT EXTENT OF THE CONSTRUCTION WORK CANNOT BE NECESSARILY OR ACCURATELY

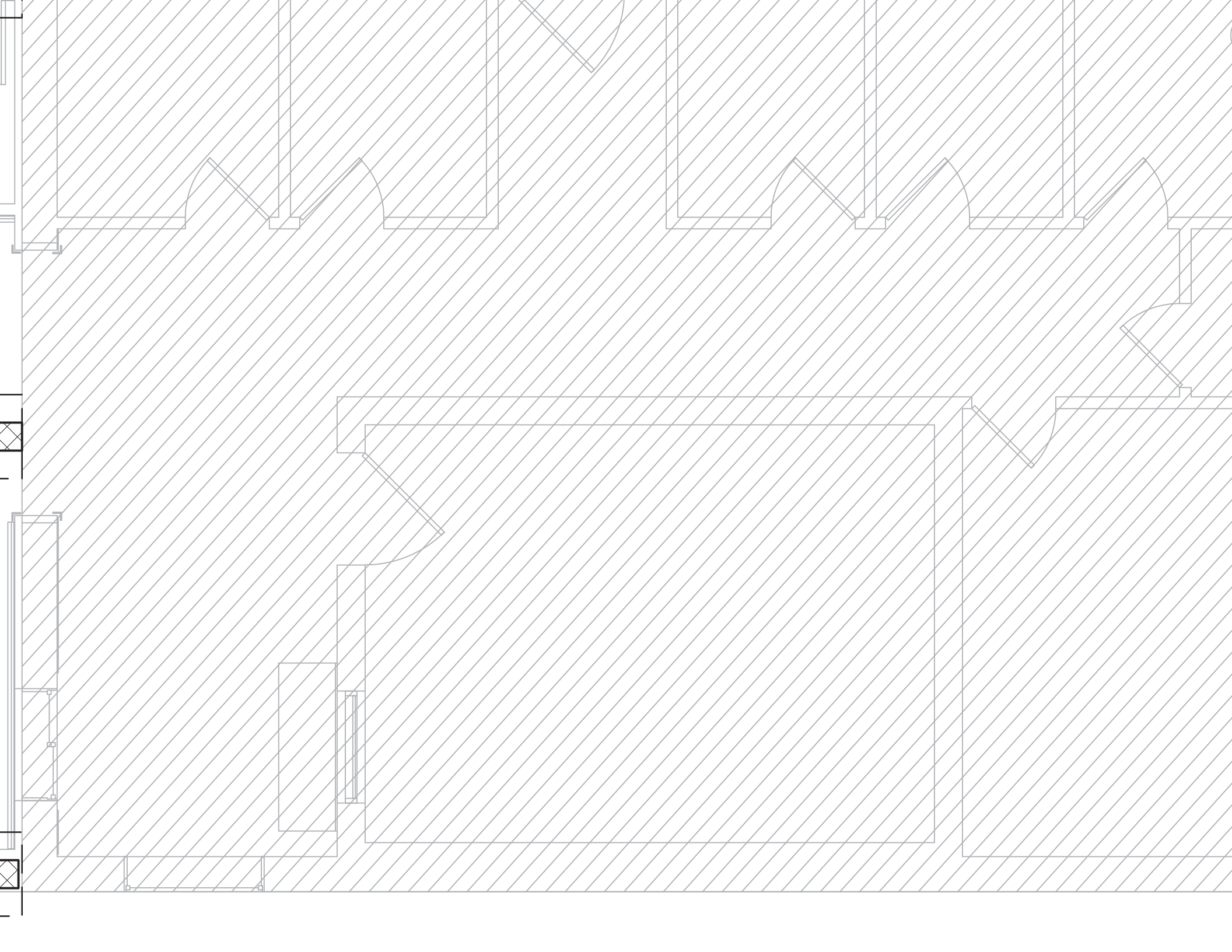
4. THE SLABS SH
5. THE MANUFACT
6. CONCRETE MIX
7. COMPRESSIVE
8. PRESTRESSING
9. SPECIFICATION

MASONRY (CMU)

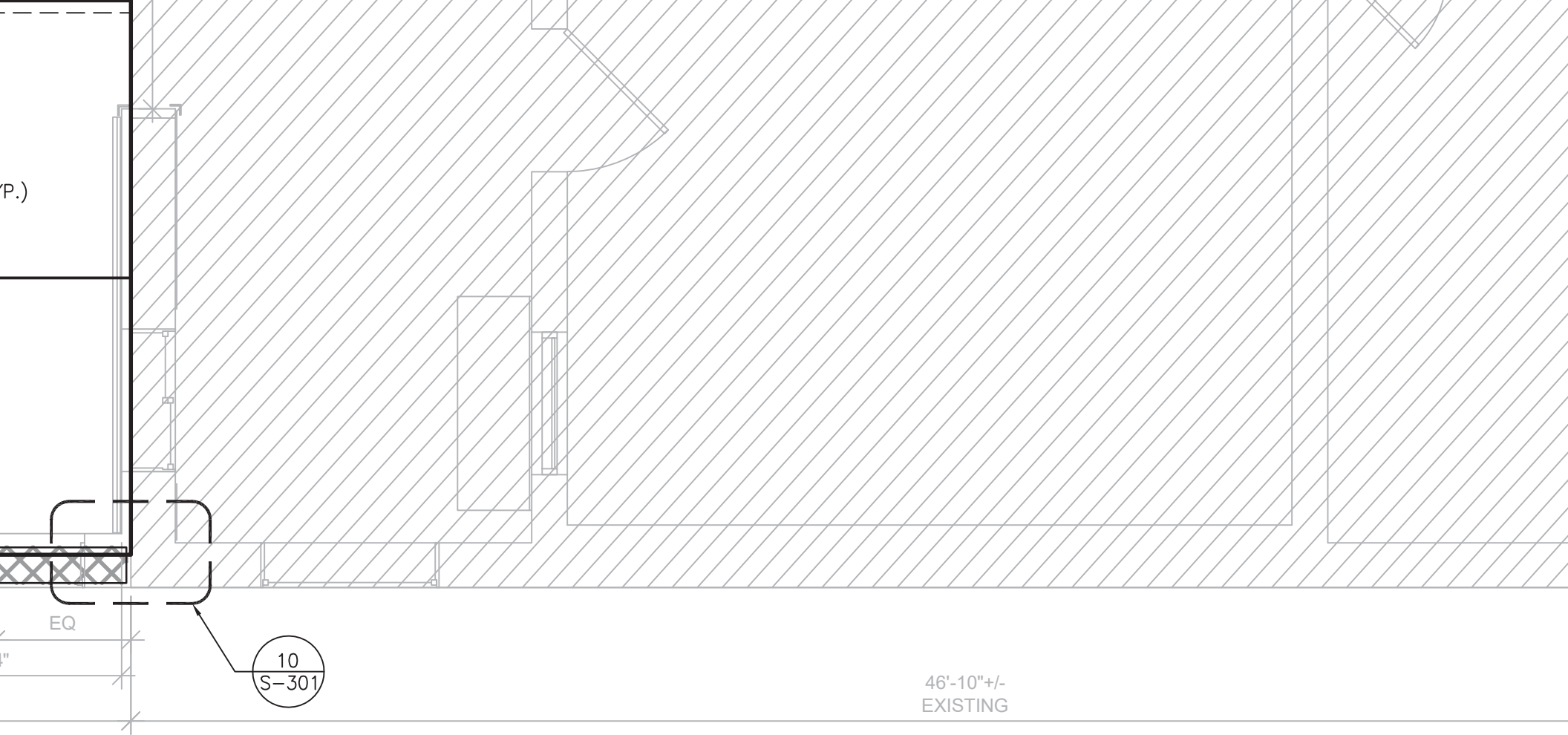
1. ALL MASONRY
2. EDITIONS OF T
3. "SPECIFICATION
4. REFERENCED S
5. ACCORDINGLY.
6. HOLLOW LOAD
7. LATEST EDITIOS
8. 2,000 P.S.I. N
9. ALL GROUT SH
10. P.S.I.
11. MASONRY WALL
12. ARE IN PLACE.

STRUCTURAL STEEL

1. FABRICATION
2. MANUAL", LA
3. SPECIFICATION
4. ASTM A325 C
5. EXTERIOR STR
6. AND A153, C
7. WIDE FLANGE
8. OTHER STRUC
9. STEEL PIPE:
10. STEEL TUBING
11. GALVANIZED S
12. A. STRUCTURAL
13. B. BOLTS, FAST
14. ALL BOLTED
15. NOTED OTHER
16. ANCHOR ROD
17. WELDING ELE
18. BY THE AWS.
19. CUTS, HOLES,
20. THE SHOP DR
21. MEMBERS IN
22. SUBMIT SHOP
23. COORDINATED
24. WELDS. INITI



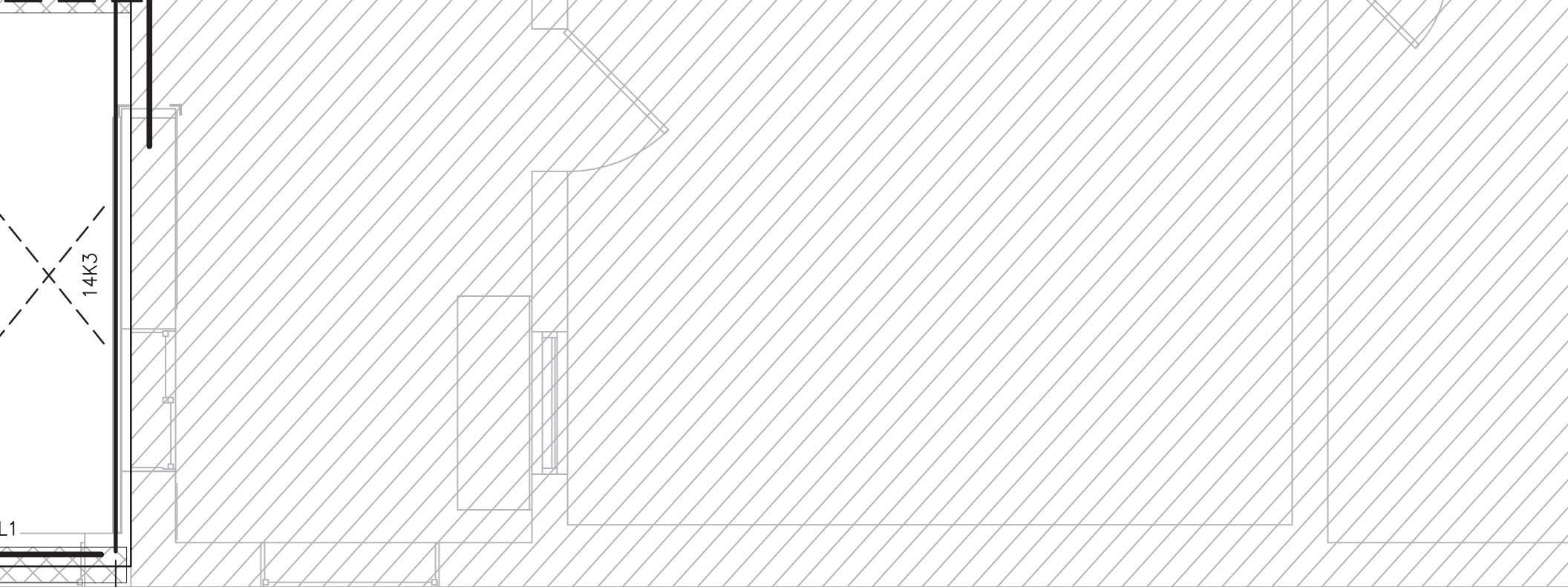
(P.)



EQ

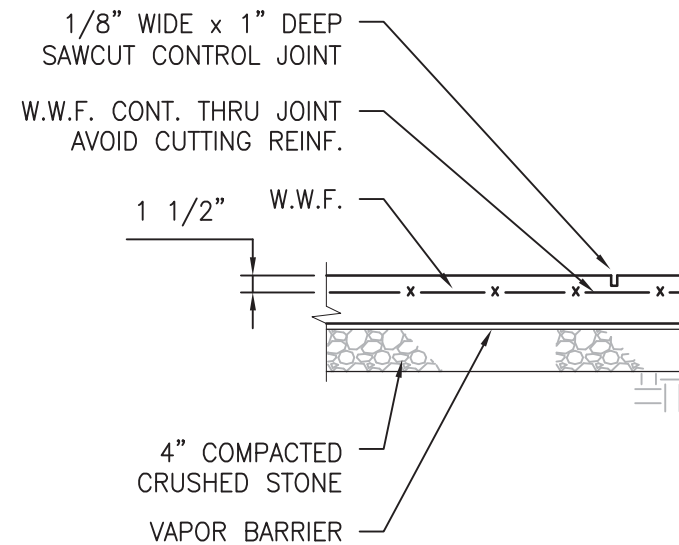
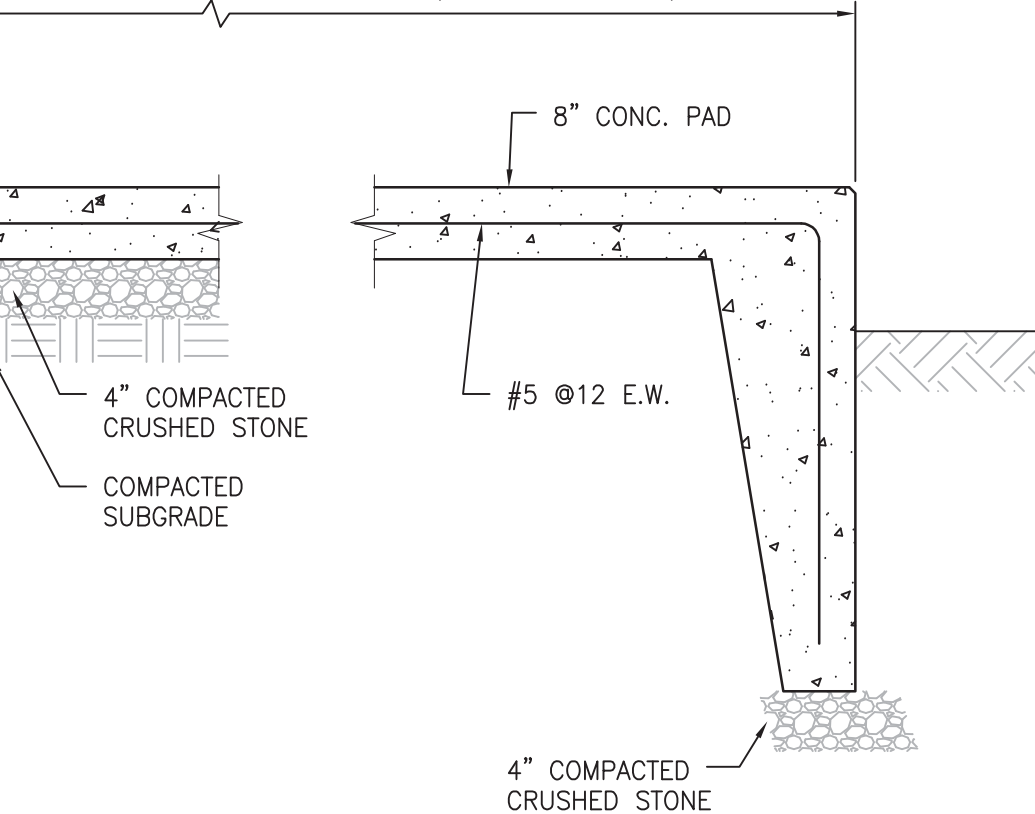
10  
S-301

46'-10" +/-  
EXISTING



46'-10"±  
EXISTING

AND WIDTH TO SUIT EQUIPMENT (SEE MECH. PLANS)



NOTE: PROVIDE CONTROL JOINTS @ MAXIMUM WITHIN 8 HOURS FROM PO

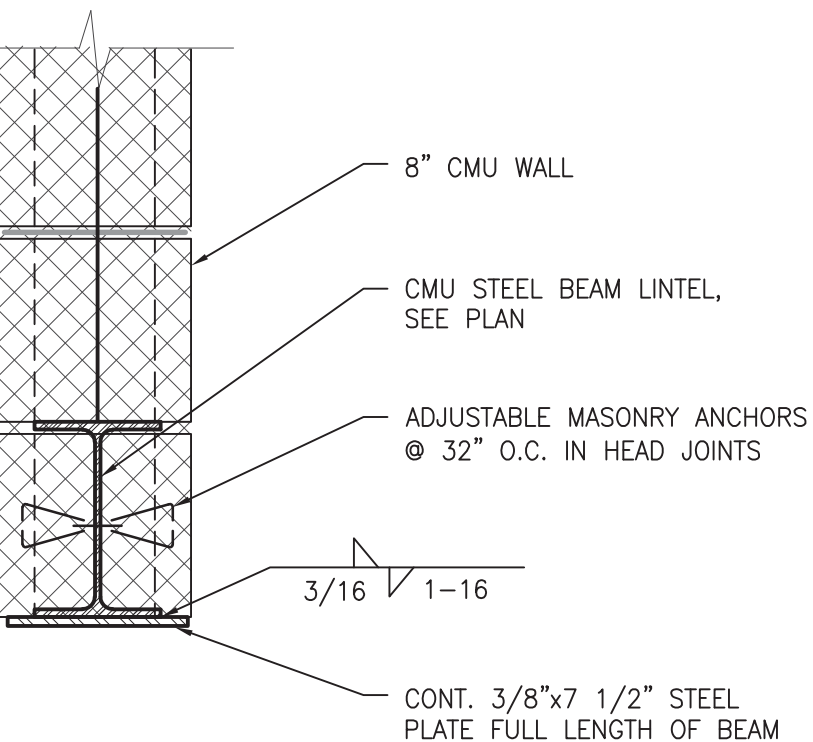
SECTION — TYPICAL EQUIPMENT PAD

3/4" = 1'-0"

7 DETAIL—TYPICAL S.C.

SCALE: 3/4" = 1'-0"





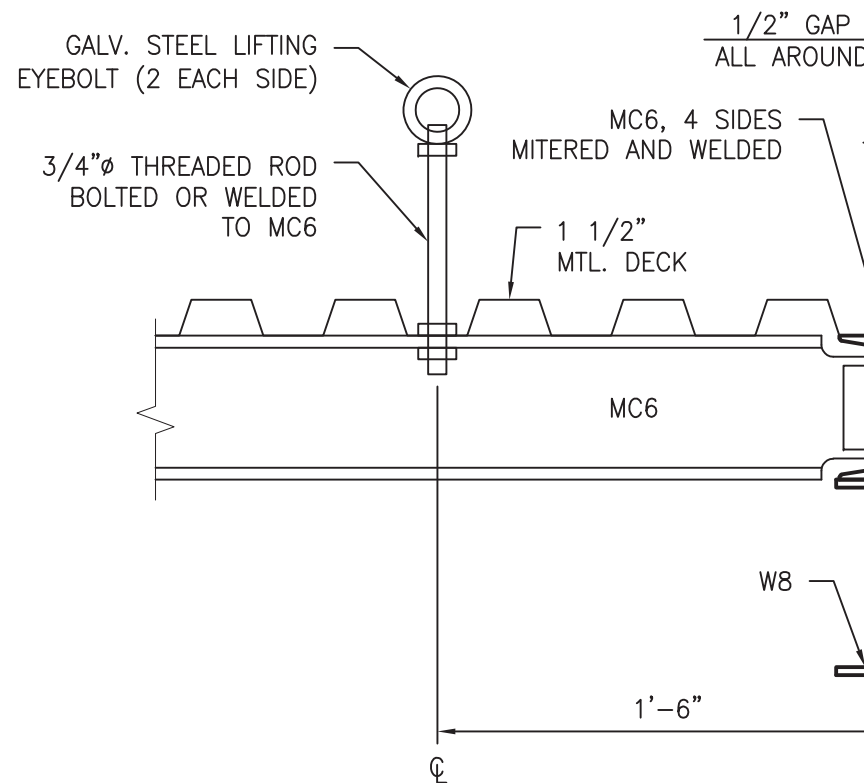
LINTEL BEARING AT EACH SIDE OF OPENING.

SOLID 16" MIN. BELOW LINTEL BEARING.

UP WALL DIRECTLY ABOVE NEW STEEL LINTELS

CMU AT NEW OPENING IN EXISTING WALLS.

## CMU STEEL LINTEL DETAIL



7

## REMOVABLE HATCH

SCALE: 1 1/2"=1'-0"

PRIVATE WATER COOLER	INCAND.	INCANDESCENT	P.LAM	PLASTIC LAMINATE	U.O.N.
JUST	INCL.	INCLUSIVE	PLAS.	PLASTER	
ING	INSUL.	INSULATION	PNL.	PANEL	
SED	INT.	INTERIOR	PREFAB.	PREFABRICATE	V.P.
ENSION JOINT	INTER.	INTERMEDIATE	PSI.	POUNDS PER SQUARE INCH	V.C.T.VI
RIOR	INV.	INVERT	PT.	POINT	VERT.
			PTN.	PARTITION	V.I.F.
DRY APPLIED FINISH	J.C.	JANITORS CLOSET	PVC.	POLYVINYL CHLORIDE	V.
H AIR INTAKE	JT.	JOINT	PWD.	PLYWOOD	V.W.C.
R DRAIN					
DATION	LAB.	LABORATORY	Q.T.	QUARRY TILE	W.
EXTINGUISHER	LAM.	LAMINATED	QTY.	QUALITY	W/
EXTINGUISHER CABINET	LAV.	LAVATORY			W.C.
HOSE & EXTINGUISHER	LBS.	POUNDS	R.	RISER	WD.
CABINET	LH.	LEFT HAND	RAD.	RADIUS	W/O
HOSE CABINET	L.L.	LIVE LOAD	R.B.	RUBBER BASE	W.O.
H	LONG.	LONGITUDINAL	R.D.	ROOF DRAIN	W.P.
R	L.P.	LOW POINT	REF.	REFERENCE	W.PT.
	LT.WT.	LIGHT WEIGHT	REG.	REGISTER	WT.
			REINF.	REINFORCING	W.W.F.
	M.	METER	REQD.	REQUIRED	
	MACH.	MACHINE	RET.	RETURN	
	MAINT.	MAINTENANCE	REV.	REVISION	

## CHAPTER 8 - INTERIOR FINISHES

IBC TABLE 803.9 - INTERIOR WALL AND CEILING FINISH REQUIREMENTS

GROUP	EXIT PASSAGEWAYS	CORRIDORS	ROOMS	REMARKS
BUSINESS, SPRINKLERED	B	C	C	

IBC 803.1.1 - INTERIOR WALL AND CEILING FINISH MATERIALS:

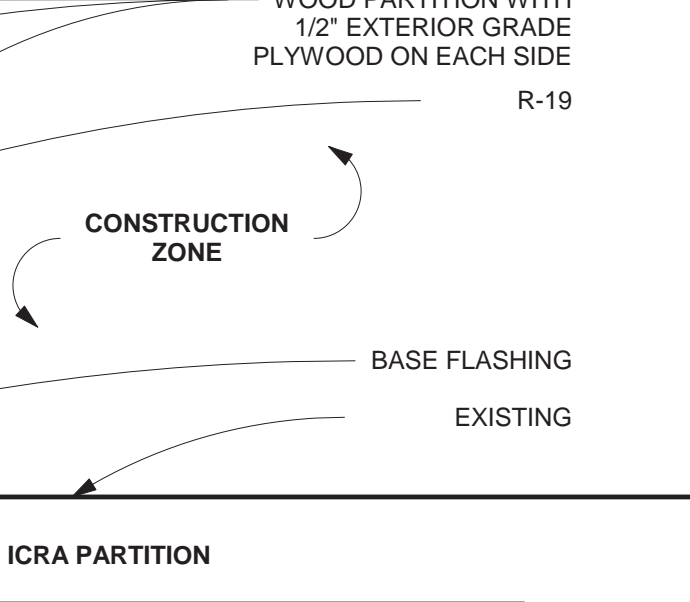
CLASS 'A' = FLAME SPREAD INDEX 0-25 / SMOKE-DEVELOPED INDEX 0-450.

CLASS 'B' = FLAME SPREAD INDEX 26-75 / SMOKE-DEVELOPED INDEX 0-450.

CLASS 'C' = FLAME SPREAD INDEX 76-200 / SMOKE-DEVELOPED INDEX 0-450.

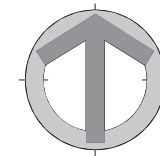
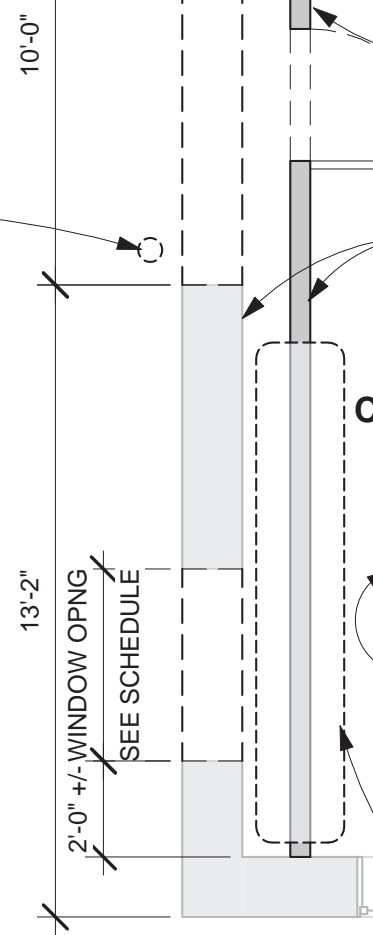
CERTIFICATES FOR INTERIOR FINISHES SHALL BE MADE AVAILABLE TO FIRE MARSHAL

## CHAPTER 9 - FIRE PROTECTION SYSTEMS



REMOVE AND INSTALL CHARGERS AND CO2 READOUT/ALARM ON ICRA PARTITION.  
INSTALL ON PERMANENT WALL AFTER CONSTRUCTION.

RELOCATE  
CONDENSATE  
PIPE

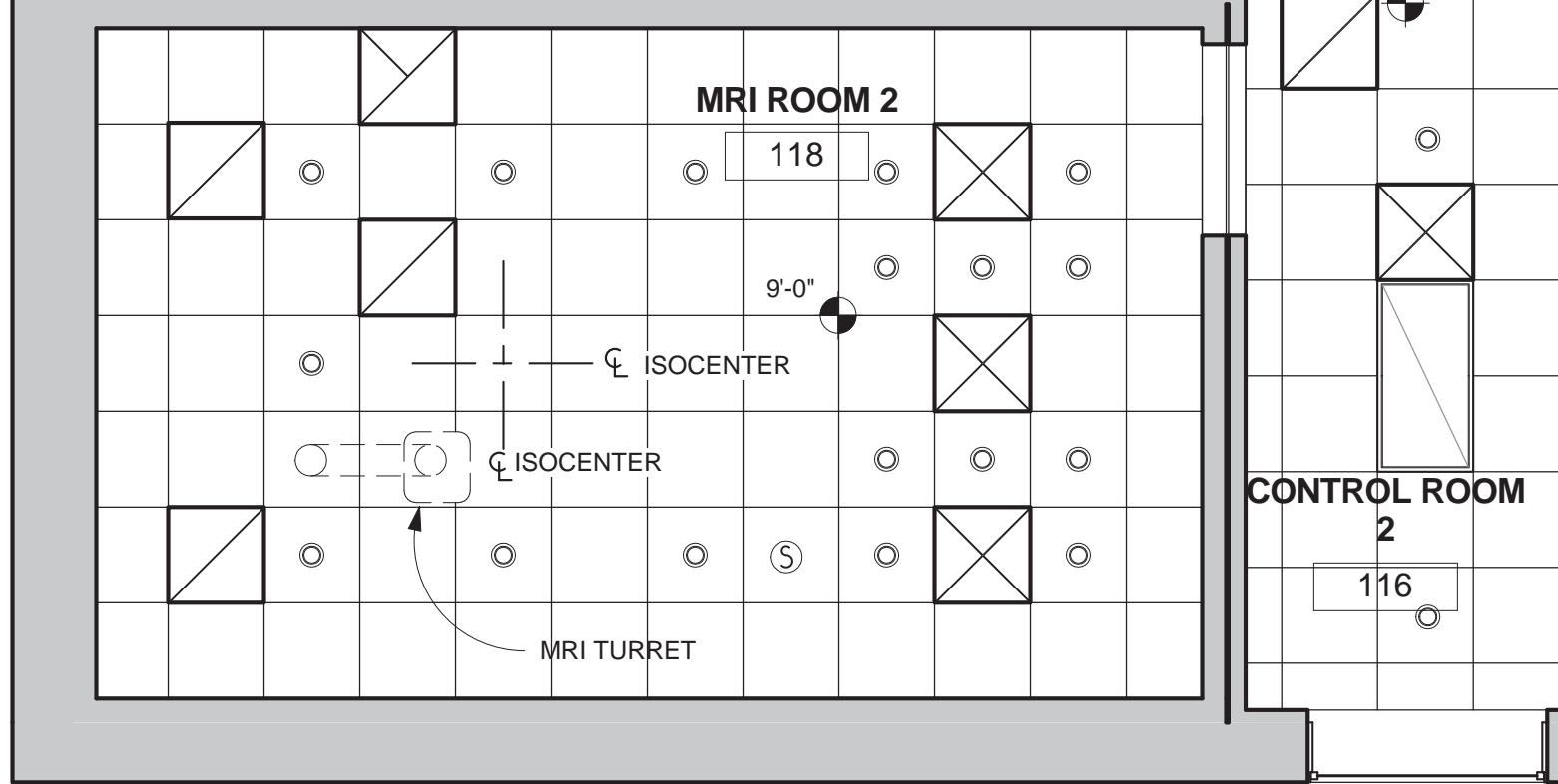
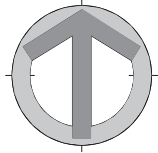


1 LEVEL 1 - DEMOLITION  
1/4" = 1'-0"

SALVAGE PLUMBING FIXTURES AND  
ACCESSORIES, AND RE-INSTALL AFTER ICRA  
PARTITION IS INSTALLED.







① Level 1 REFLECTED CEILING PLAN  
 1/4" = 1'-0"

PAINTED WALLS: # SW 7010, 'WHITE DUCK' (LIGHT CREAM)

CEILING: ALUMINUM CEILING TILES

SUSPENDED REGULAR CEILING TILES, EQUAL TO 2X2 ARMSTRONG CIRRUS SERIES, ANTI-MOLD/ MILDEW, HUMI-GUARD, SAG RESISTANT  
COLOR: # 584 WHITE WITH WHITE GRID

FLOOR: KILN-FINISHED WILSONART

CASEWORK HIGH PRESSURE LAMINATE  
COLOR: #4843 'MISTED ZEPHYR'

COUNTERTOPS SOLID SURFACE  
COLOR: #9194TM 'STEEL GREY TEMPEST'

PROTECTION: INPRO

HANDRAIL  
COLOR: # 0107 'PEWTER GRAY'

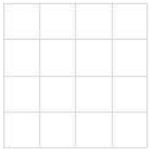
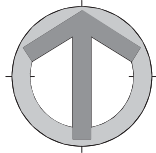
BUMPER RAIL  
COLOR: # 0107 'PEWTER GRAY'

CORNER GUARD  
COLOR: # 0151 "GRAYSTONE"

VINYL SHEET WALL PROTECTION  
COLOR: # 0151 "GRAYSTONE"

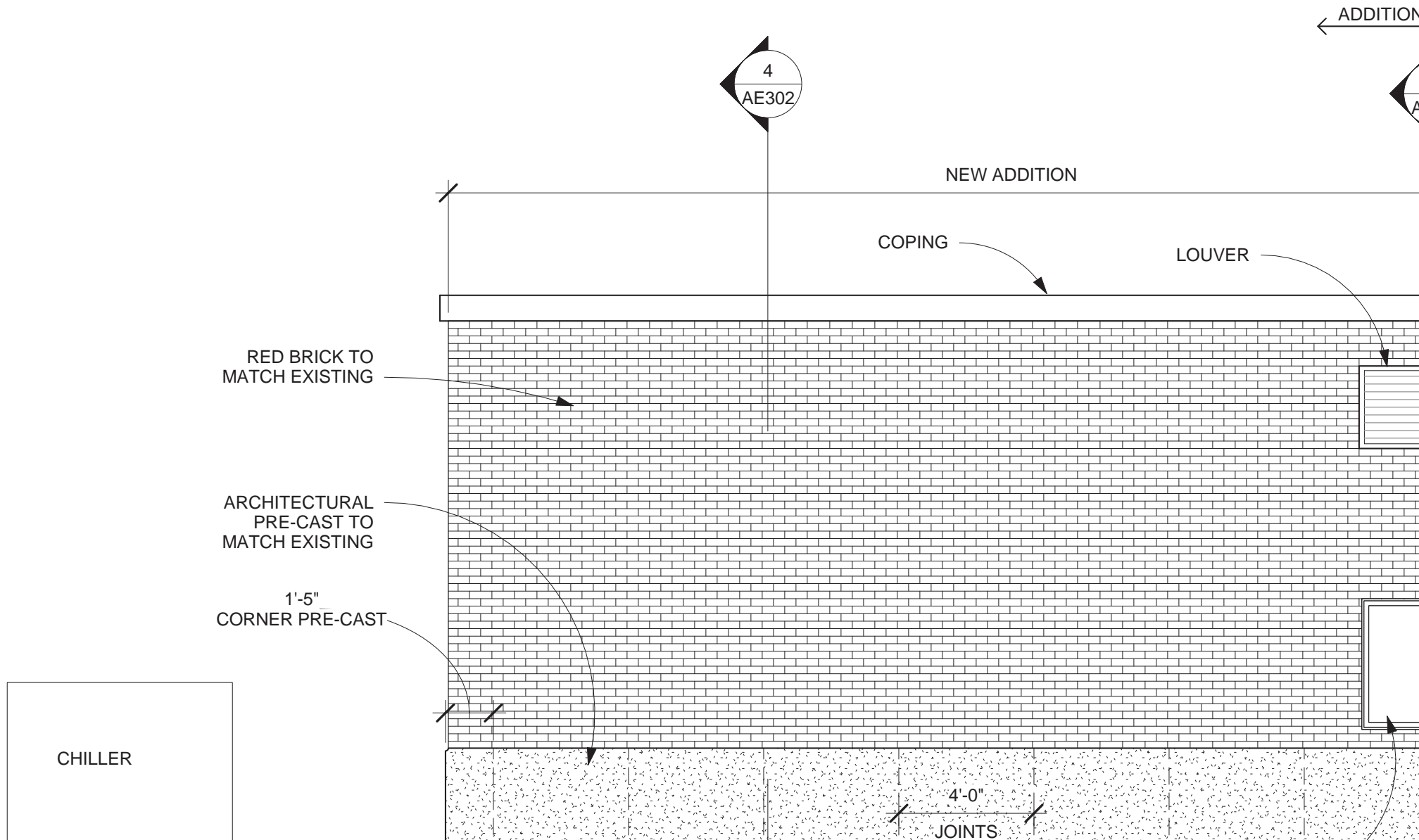
CARPET: LE SHAW CONTRACT

COLLECTION: NO RULES  
PATTERN: DIFFUSE  
MONOLITHIC INSTALLATION,  
COLOR: #75597 'PASSPORT'



CARPET TILE  
CAR- 1

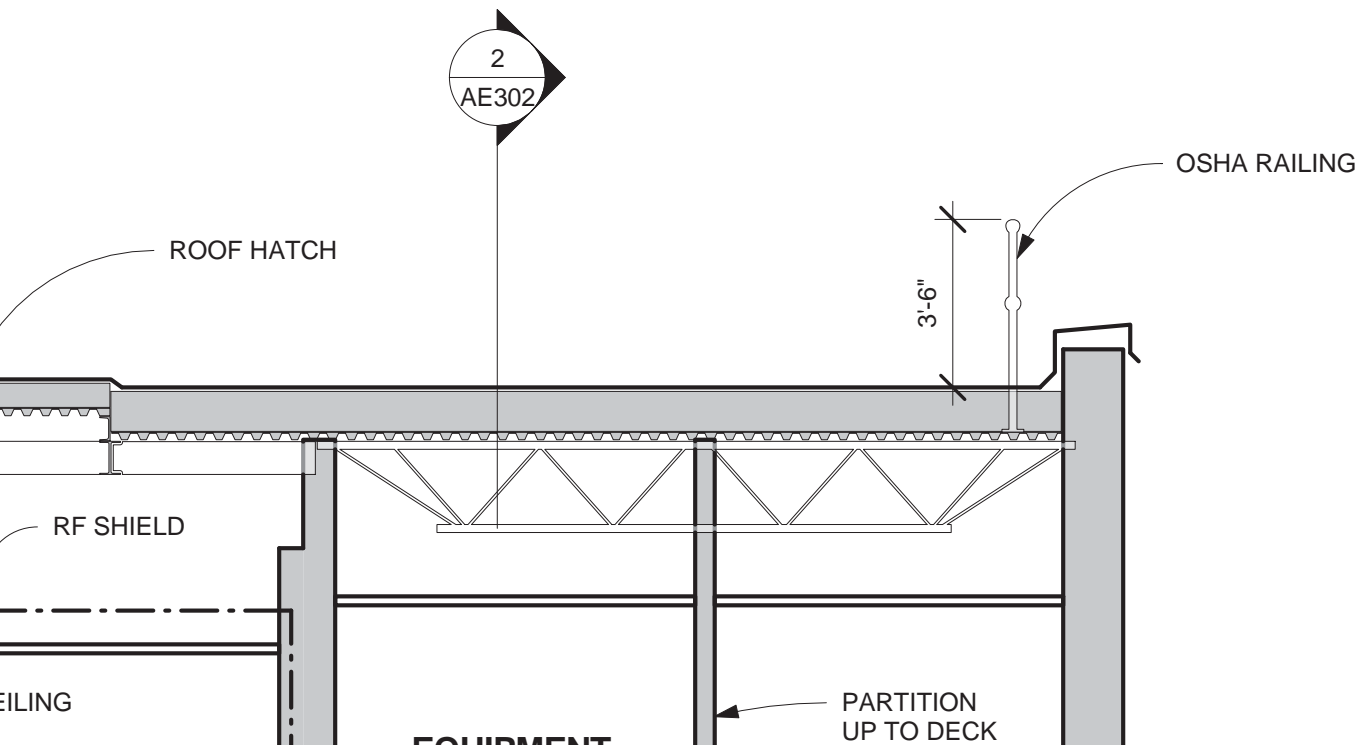
Number	Name	
101	CORRIDOR	SSRF (RSF 4
102	WAITING ROOM	CARPET TILE



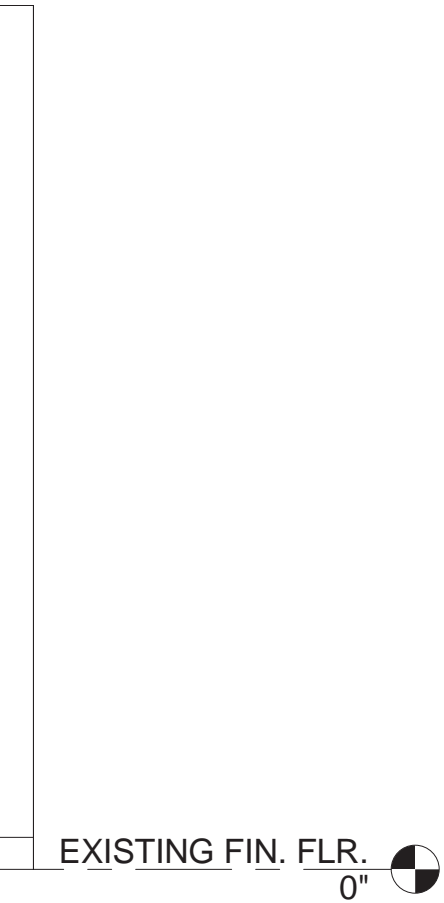


TO MATCH EXISTING  
FINISH FLOOR

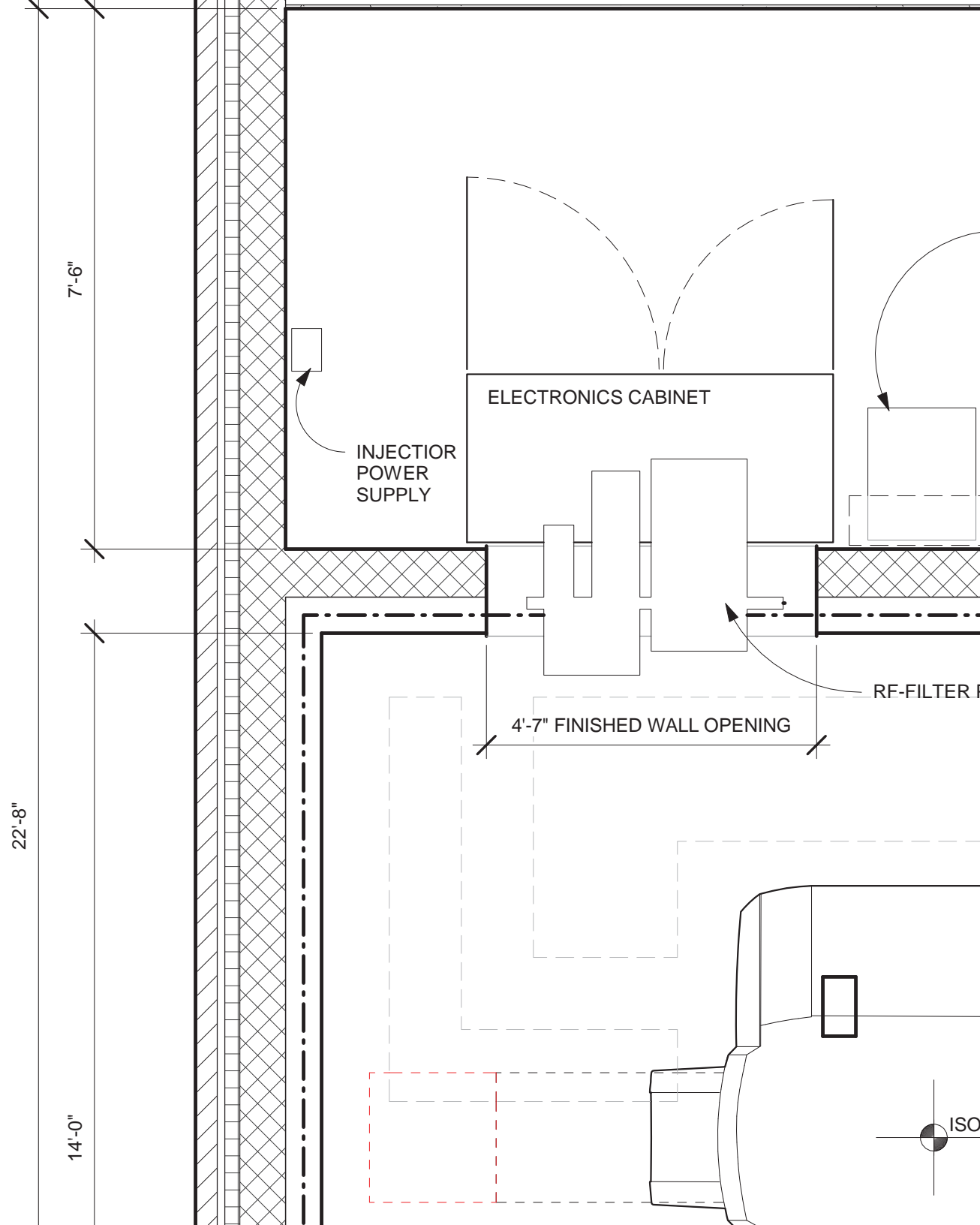
1

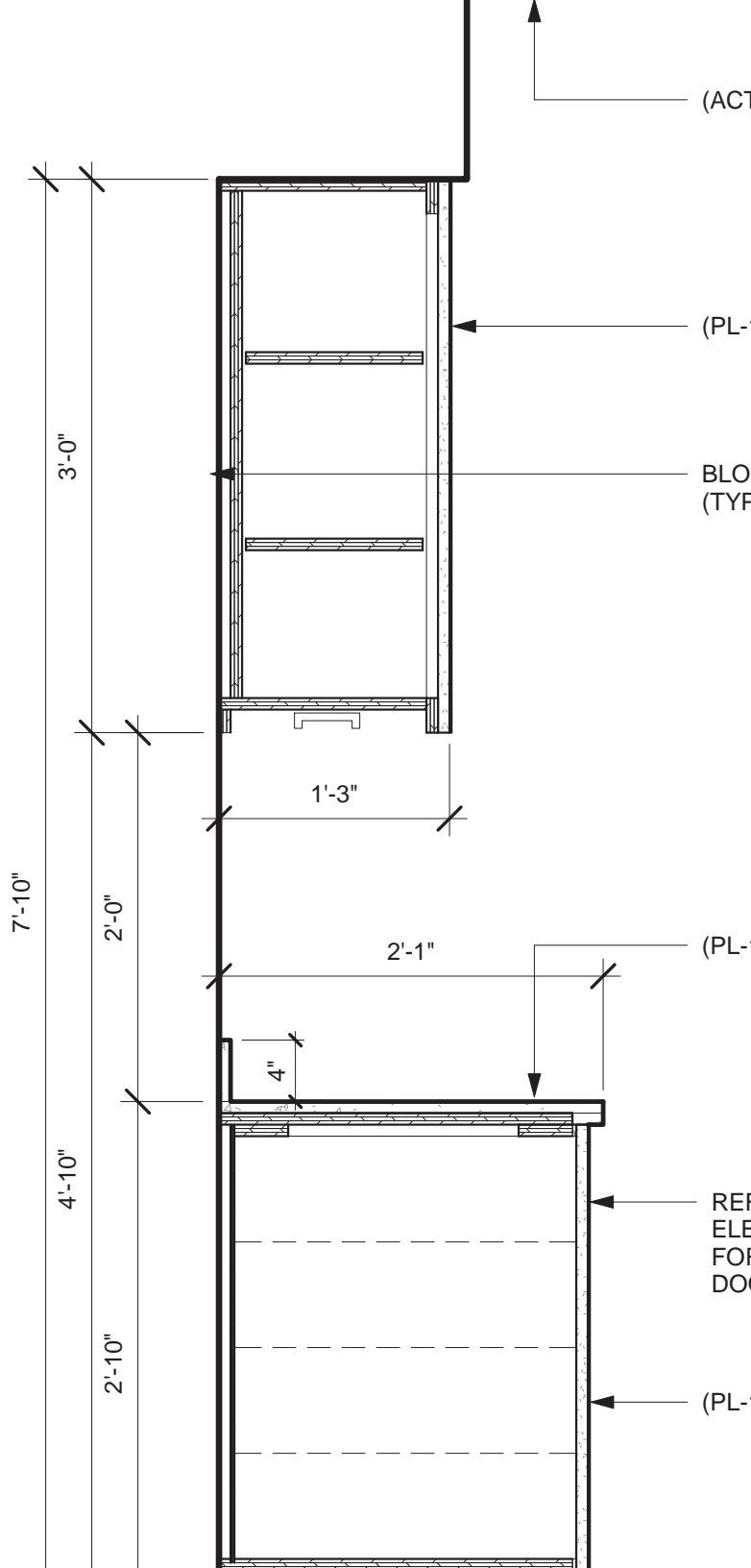


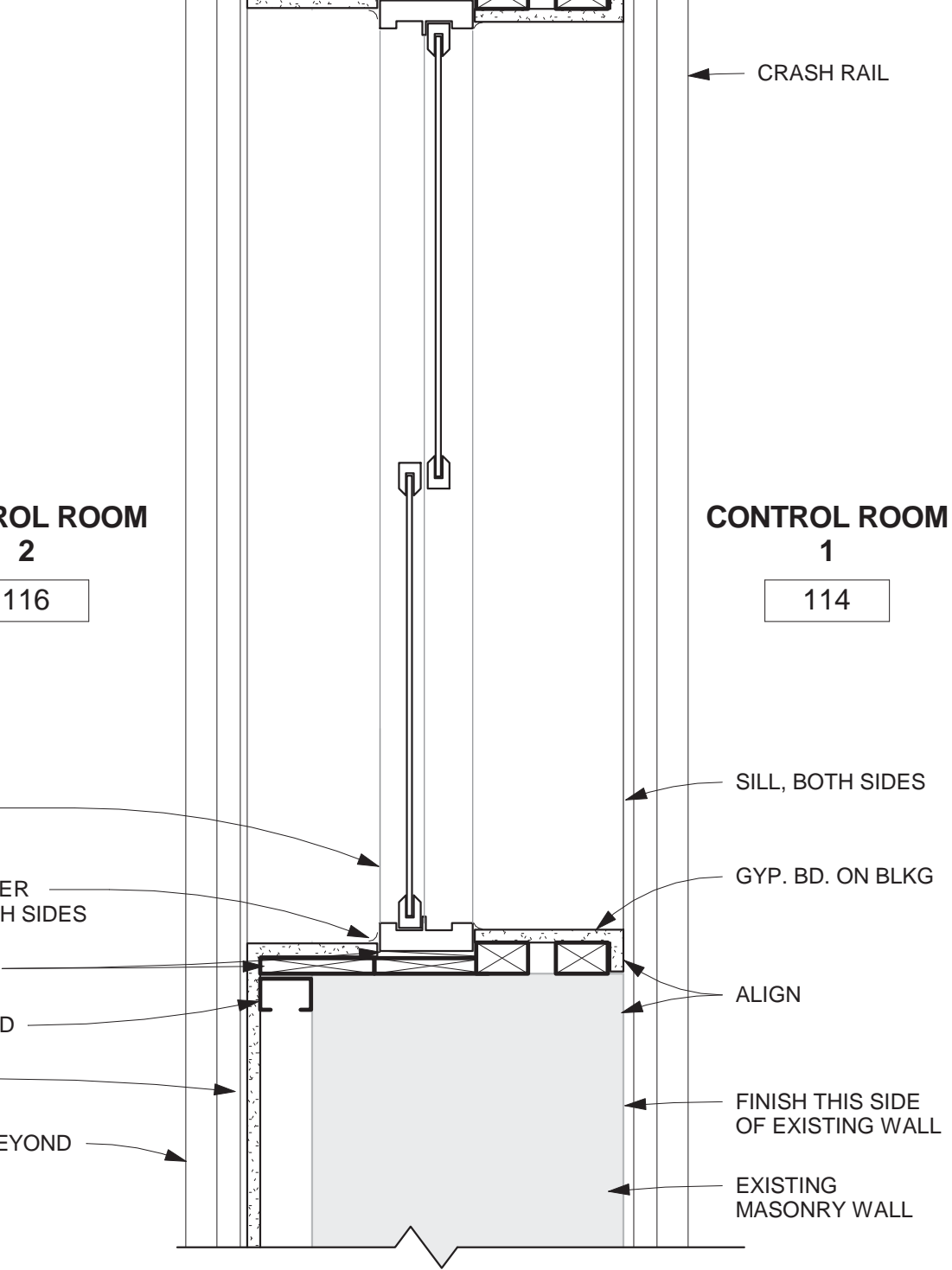
ARE SHALL BE



OXYGEN SENSOR



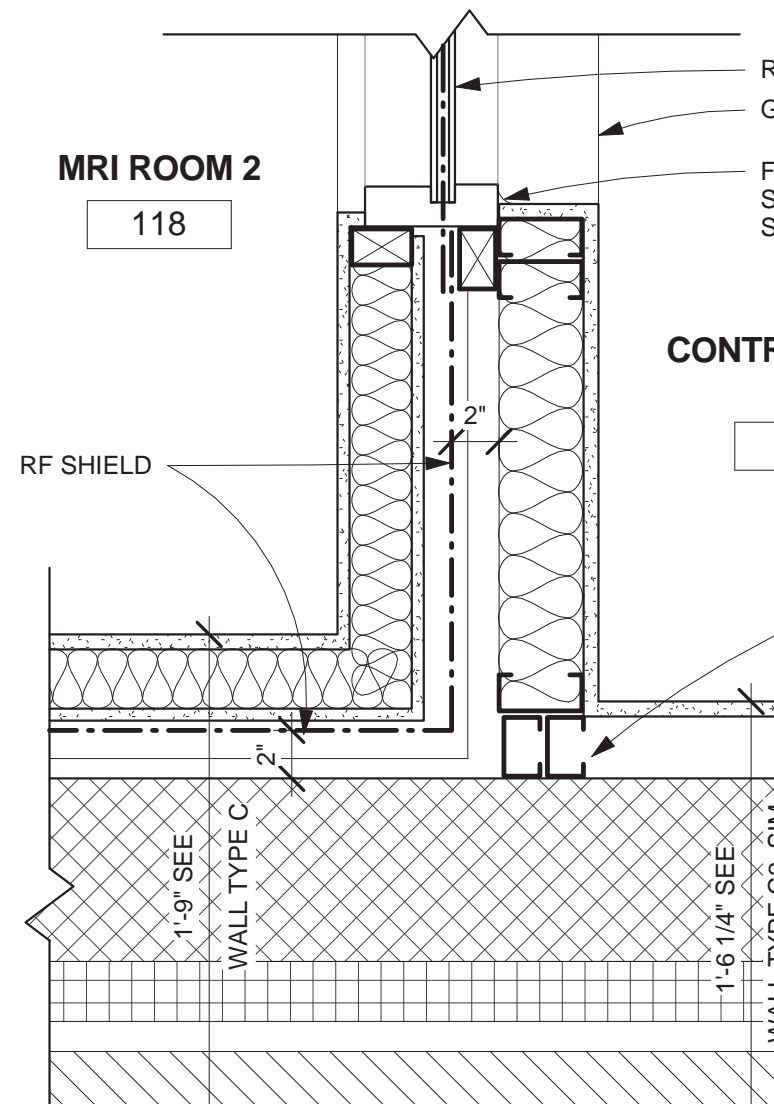


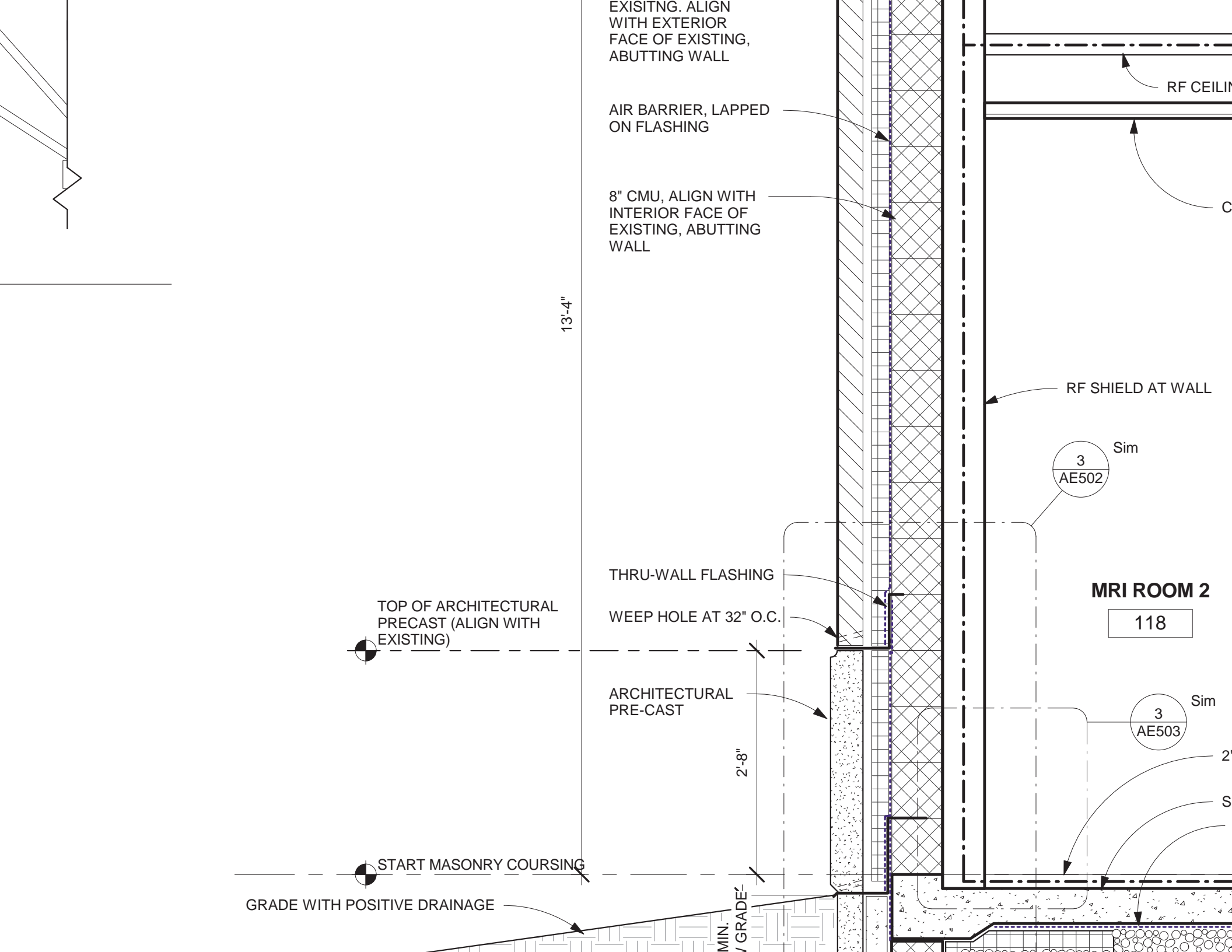


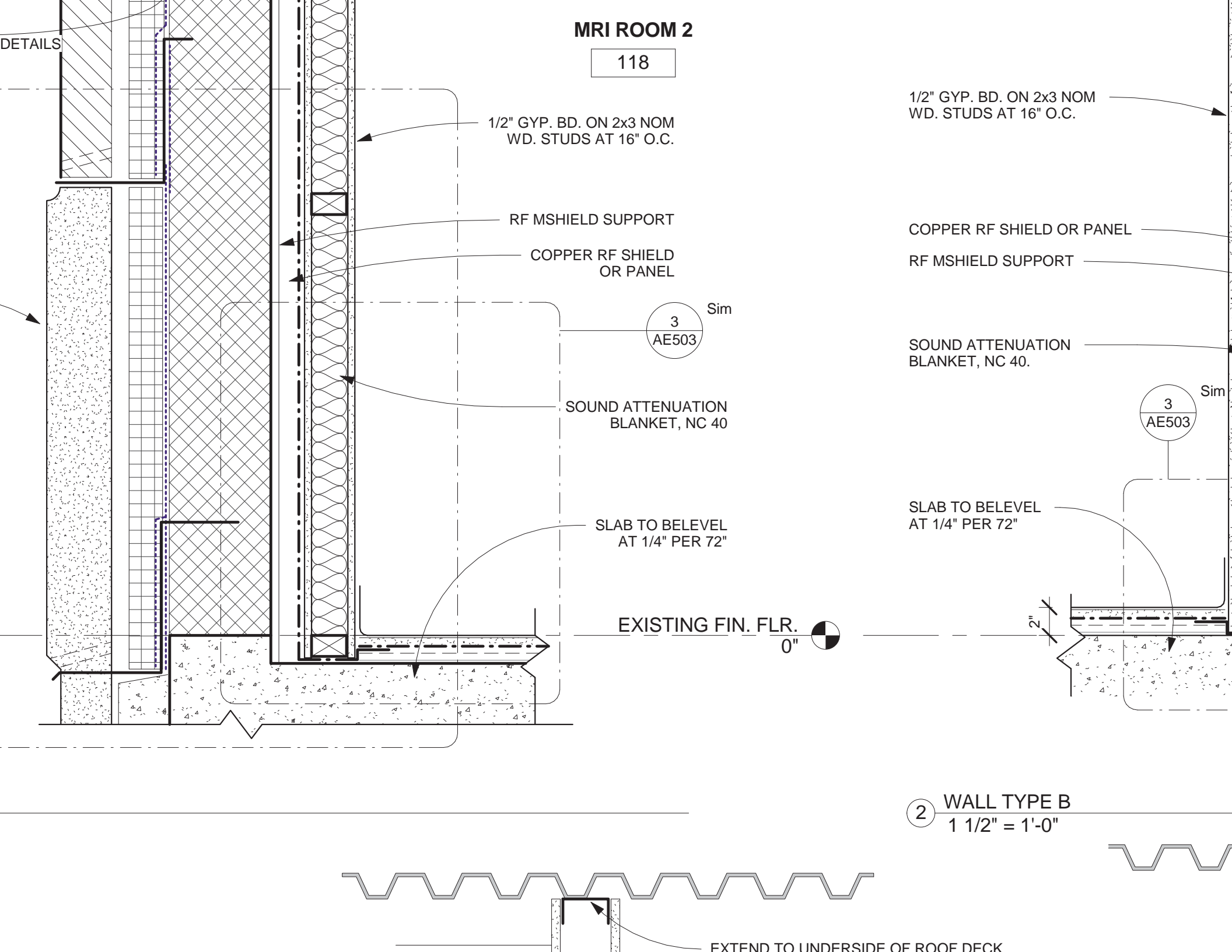
7

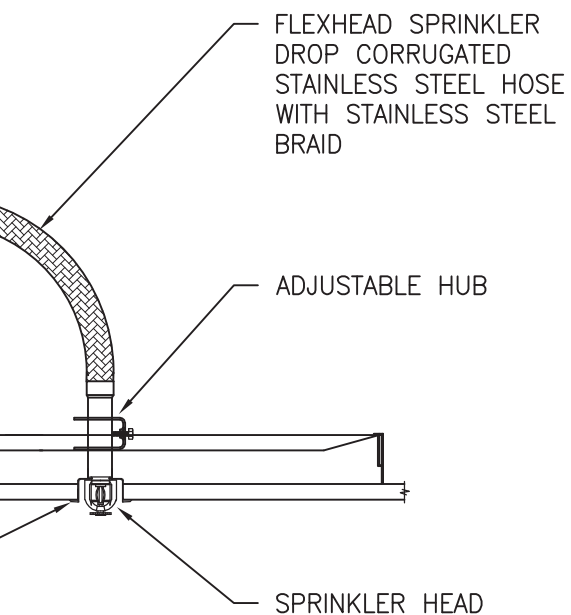
# WALL / WINDOW 'C' PLAN DETAIL

1 1/2" = 1'-0"







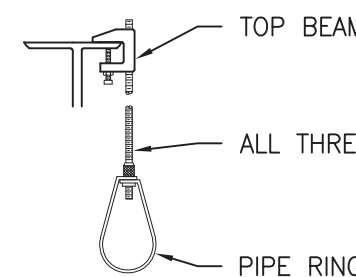
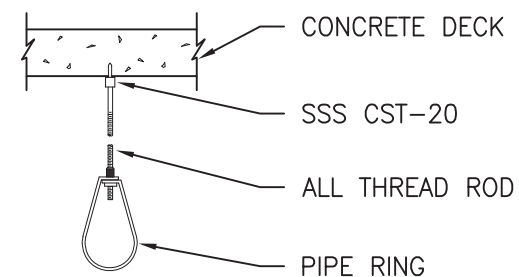


SPRINKLER HOSE DETAIL

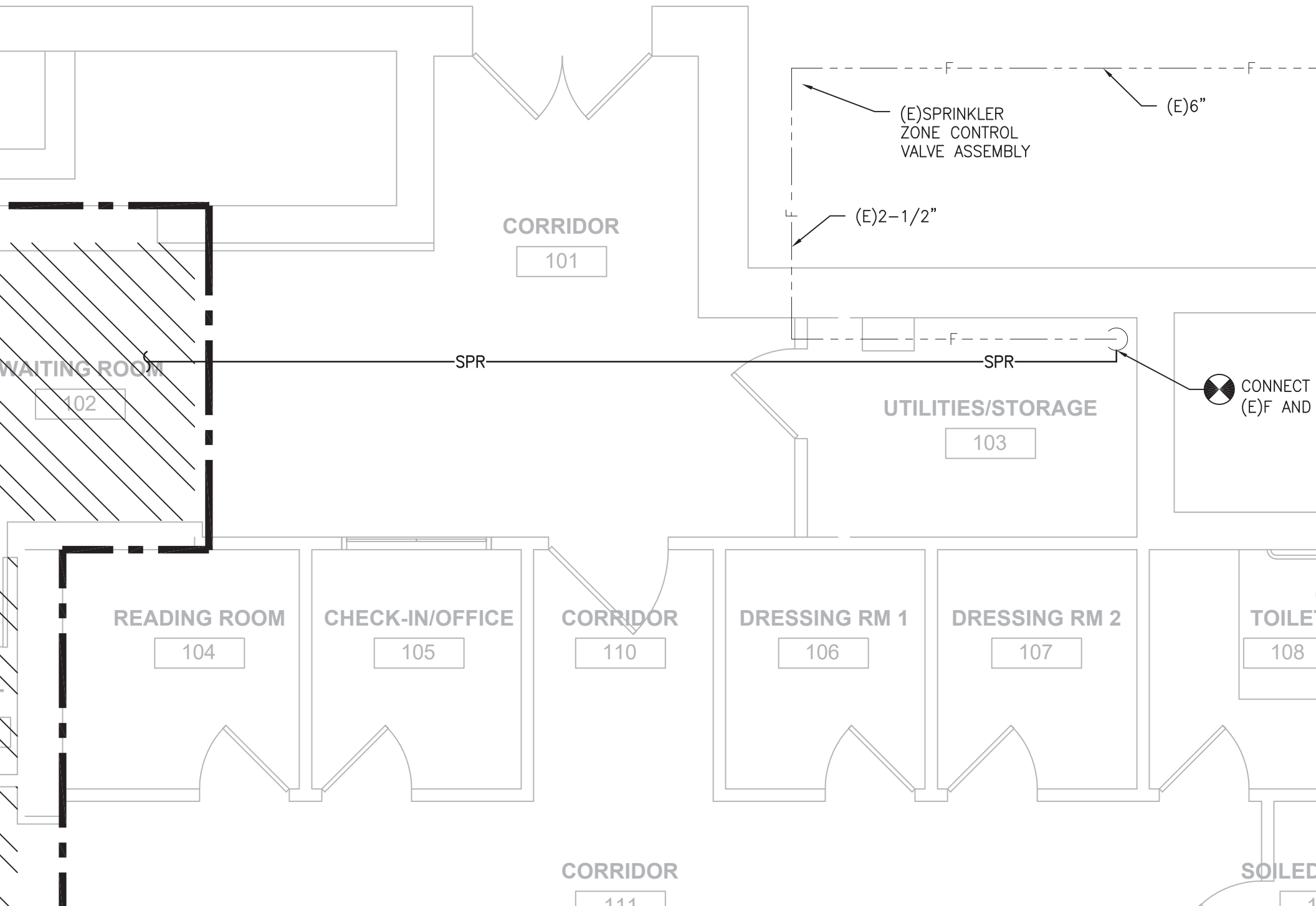
MAXIMUM DISTANCE BETWEEN HANGERS											
	NOMINAL PIPE SIZE (INCHES)										
	3/4	1	1-1/4	1-1/2	2	2-1/2	3	3-1/2	4	5	
STEEL PIPE	N/A	12-0	12-0	15-0	15-0	15-0	15-0	15-0	15-0	15-0	15-0
THREADED L-WALL	N/A	12-0	12-0	12-0	12-0	12-0	12-0	N/A	N/A	N/A	N/A
COPPER TUBE	8-0	8-0	10-0	10-0	12-0	12-0	12-0	15-0	15-0	15-0	15-0
CPVC	5-6	6-0	6-6	7-0	8-0	9-0	10-0	N/A	N/A	N/A	N/A
POLYBUTYLENE (IPS)	N/A	3-9	4-7	5-0	5-11	N/A	N/A	N/A	N/A	N/A	N/A
POLYBUTYLENE (CTS)	2-11	3-4	3-11	4-5	5-5	N/A	N/A	N/A	N/A	N/A	N/A
DUCTILE IRON PIPE	N/A	N/A	N/A	N/A	N/A	N/A	15-0	N/A	15-0	N/A	N/A

NFPA-13 (2013 ED.) TABLE 9.2.2.1

NOTE: ALL HANGERS SHOWN ON THE DRAWING ARE DIAGRAMMATIC ONLY.  
HANGERS ARE TO BE INSTALLED AS PER THE SCHEDULE ABOVE.



EXTEND EXISTING  
SPRINKLER SYSTEM  
INTO NEW ADDITION





	NITROUS OXIDE
	OXYGEN
	NITROGEN
	LIQUEFIED PETROLEUM (LP) GAS
	NATURAL GAS
	NATURAL GAS, BELOW GRADE
	LABORATORY WASTE
	LABORATORY WASTE BELOW GRADE
	LABORATORY WASTE VENT
	DIALYSATE CONCENTRATE
	CHEMICAL RESISTANT WASTE
	CHEMICAL RESISTANT VENT



PUMP

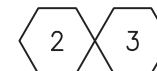
## BALANCING VALVE SYMBOLS

	BALANCING VALVE
	GATE VALVE (ISOLATION VALVE)
	ISOLATION VALVE NORMALLY CLOSE
	ISOLATION VALVE WITH 3/4" HOSE ADAPTER
	CHECK VALVE
	ANGLE GLOBE VALVE
	BUTTERFLY VALVE
	BALL VALVE
	MODULATING CONTROL VALVE
	TWO POSITION CONTROL VALVE

## DRAWING SYMBOLS



KEY NOTE SYMBOL



MULTIPLE KEY NOTES APPLY



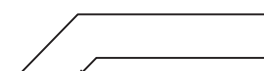
DETAIL NUMBER

DRAWING NUMBER WHERE D



SECTION LETTER

DRAWING NUMBER WHERE S



BUILDING NO. WHERE EQUIP

EQUIPMENT ABBREVIATION (P