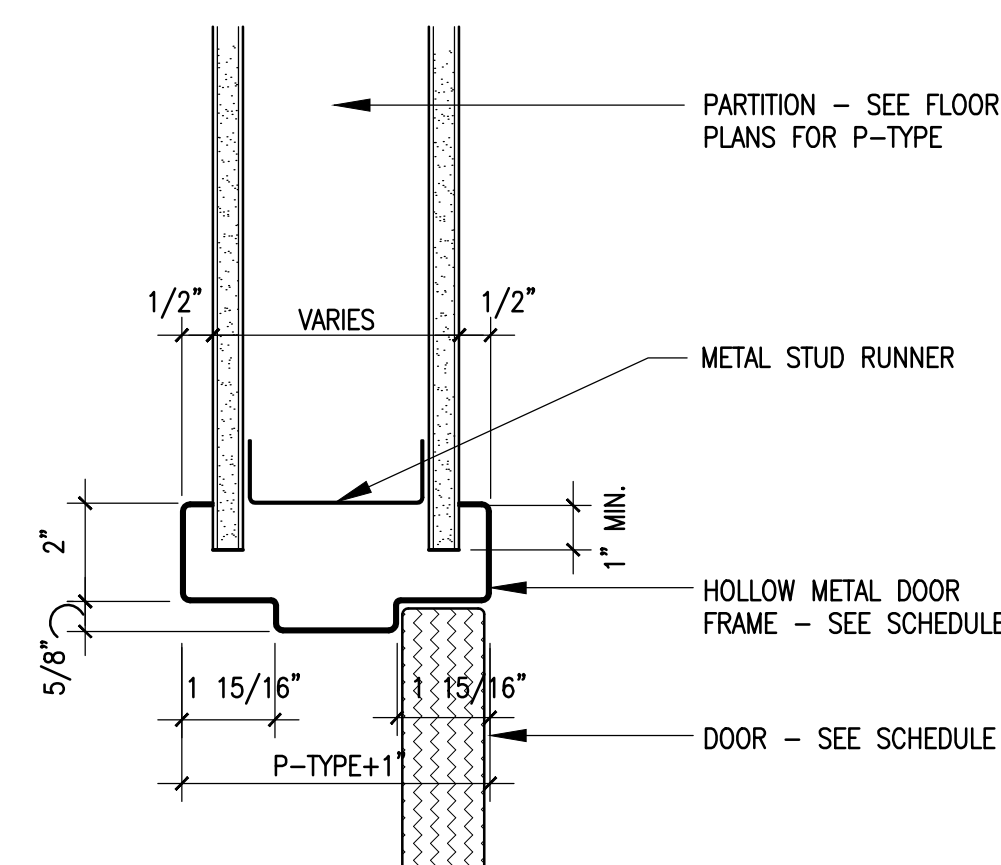


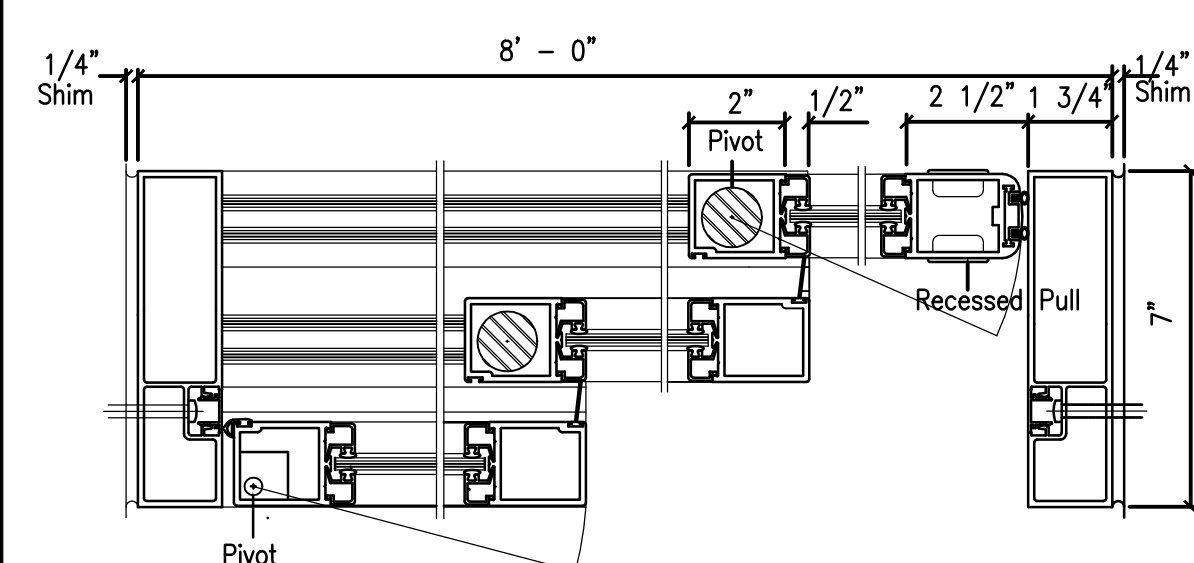
1 STEEL DOOR FRAME - HEAD
3" = 1'-0"



2 STEEL DOOR FRAME - JAMB
3" = 1'-0"

3 NOT USED

4 NOT USED

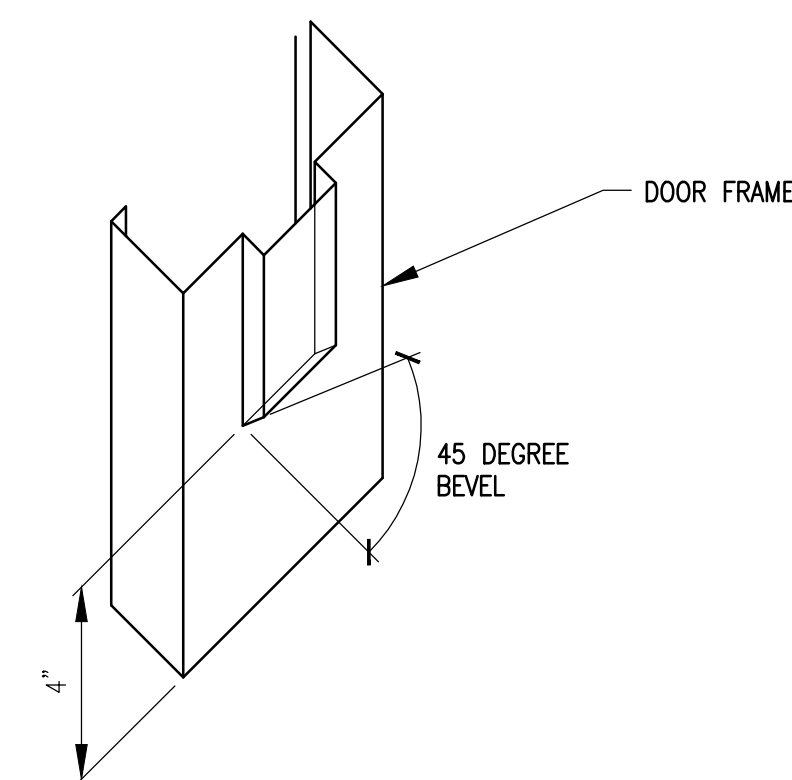


6 PATIENT ROOM SLIDING DOOR - JAMB
3" = 1'-0"

7 NOT USED

8 NOT USED

9 NOT USED

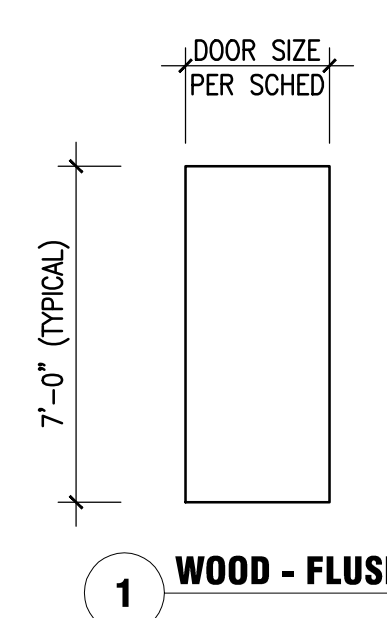


10 HOSPITAL STOP @ TYP. DOOR FRAME
3" = 1'-0"

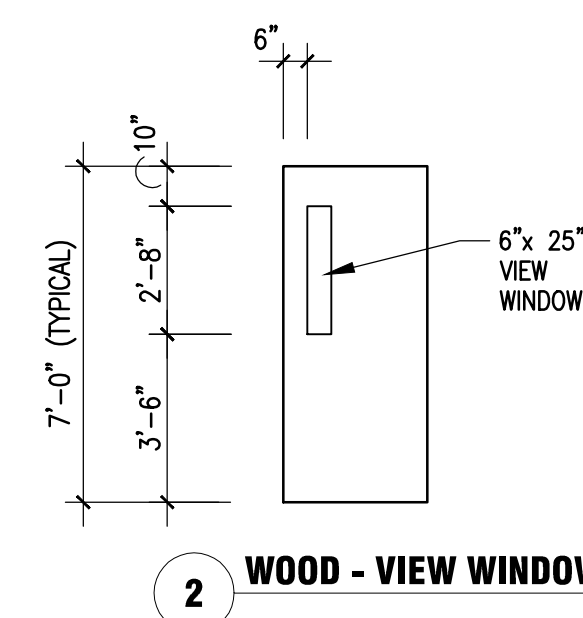
DOOR SIZES		
MK	WIDTH	HEIGHT
N	2'-0"	7'-0"
Q	2'-6"	7'-0"
R	2'-8"	7'-0"
S	3'-0"	7'-0"
T	3'-4"	7'-0"
U	3'-6"	7'-0"
V	3'-8"	7'-0"
W	3'-10"	7'-0"
X	4'-0"	7'-0"
Y	3'-0"	8'-0"

DOOR NOTES

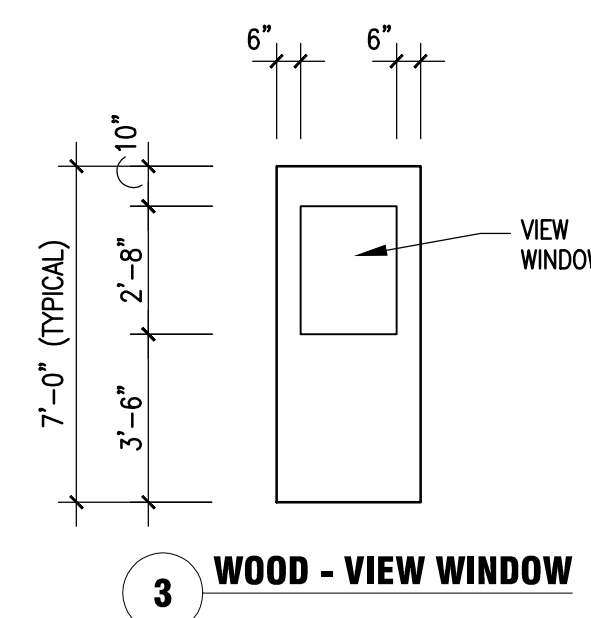
1. ALL DOORS SHALL BE 1 3/4" FLUSH UNLESS NOTED OTHERWISE.
2. ALL METAL DOOR FRAMES ARE TO BE BACK PRIMED.
3. PROVIDE HOSPITAL STOPS ON ALL HOLLOW METAL FRAMES EXCEPT SOUND-RATED AND LEAD-LINED.



1 WOOD - FLUSH

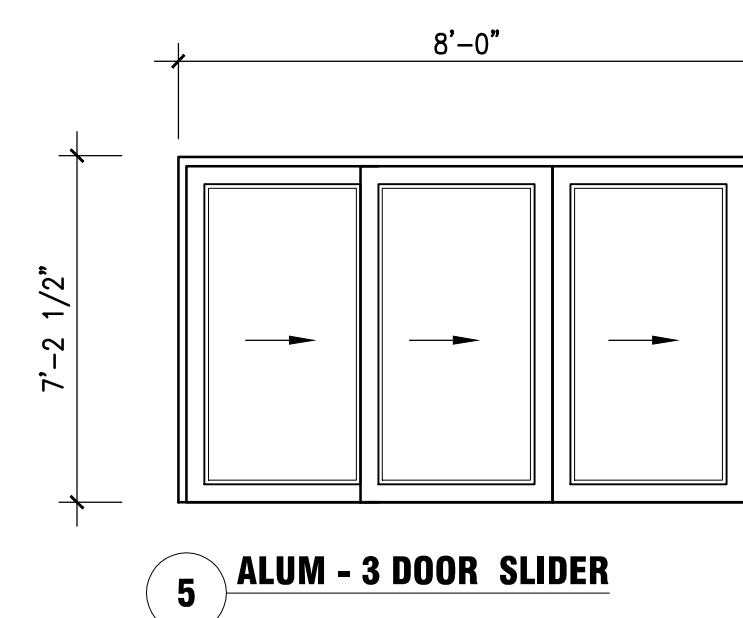


2 WOOD - VIEW WINDOW



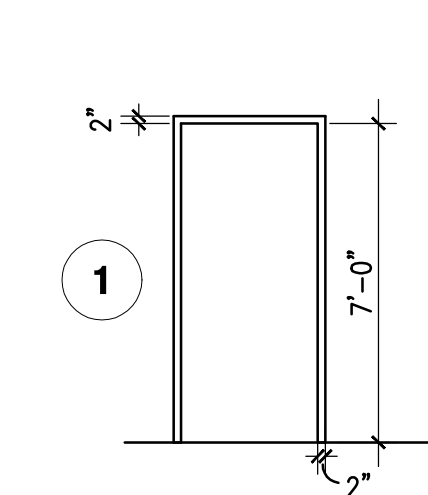
3 WOOD - VIEW WINDOW

4 NOT USED

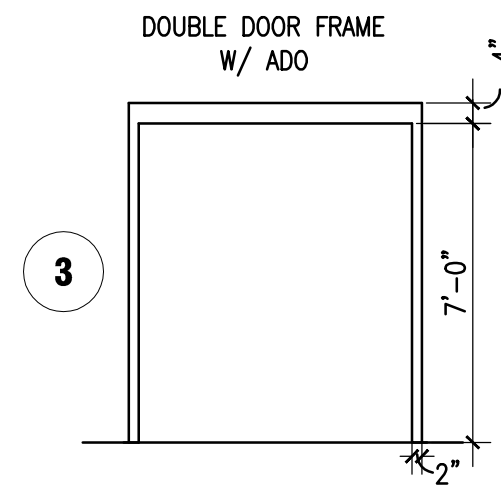
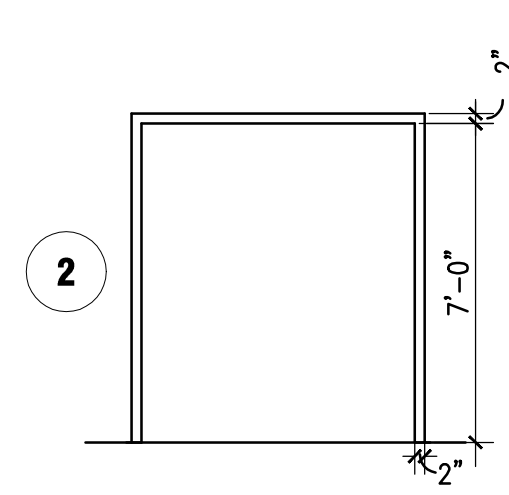


5 ALUM - 3 DOOR SLIDER

DOOR ELEVATIONS

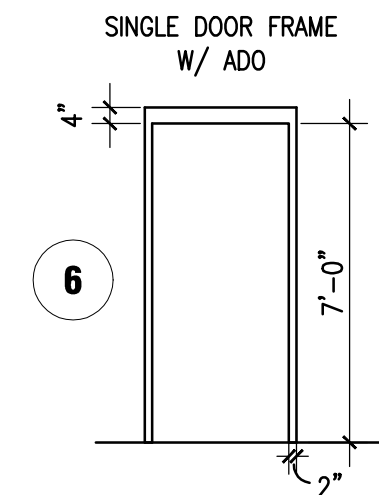


FRAME ELEVATIONS

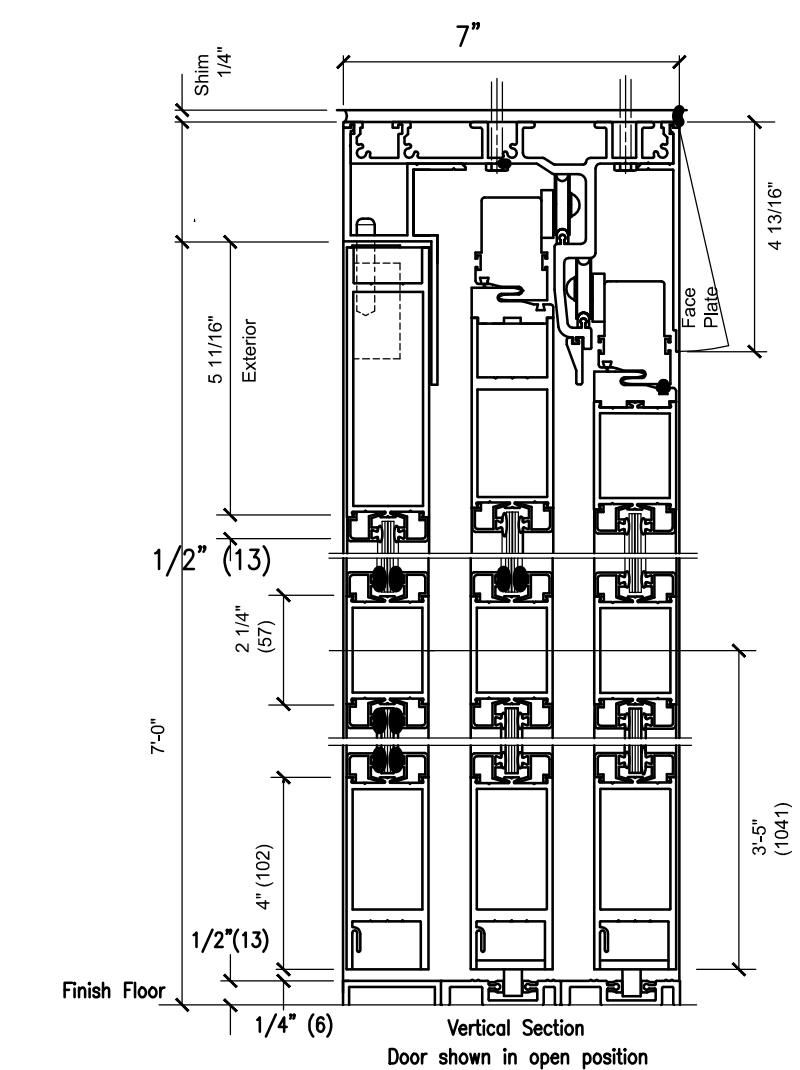


4 N/A

5 N/A



6

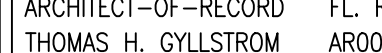



5 PATIENT ROOM SLIDING DOOR - HEAD
3" = 1'-0"

DOOR SCHEDULE

[illegible]

ABBREVIATIONS:
ADO - AUTOMATIC DOOR OPERATOR
CR - CARD READER (TO ACTIVATE ADO)
PP - PUSH PLATE (TO ACTIVATE ADO)
HM - HOLLOW METAL (DOOR OR FRAME)
WD - WOOD (FLUSH WOOD DOOR)

		CONSULTANTS:	<div>ARCHITECT--OF--RECORD THOMAS H. GYLLSTROM AR00090998</div> <div></div>	<div>ARCHITECT/ENGINEERS:</div> <div>AKEA INC. 3603 NW 98th Street, Suite B Gainesville, FL 32606 Phone: (352) 474-6124 Fax: (352) 553-4437 COA: FL #26693 AKEA Project No. 094-14</div>	Drawing Title	Project Title		Project Number	Office of Construction and Facilities Management	
					DOORS AND FRAMES SCHEDULE AND DETAILS	RENOVATE WARD 3C FOR CARDIOLOGY EQUIPMENT INSTALLATION		573-CS1-102		
					Approved: Project Director	Location GAINESVILLE, FLORIDA		Building Number 1		
						Date MARCH 9, 2018	Checked THG	Drawn JG		Drawing Number A701 11 OF 62
Revisions:	Date									

 Department of
Veterans Affairs