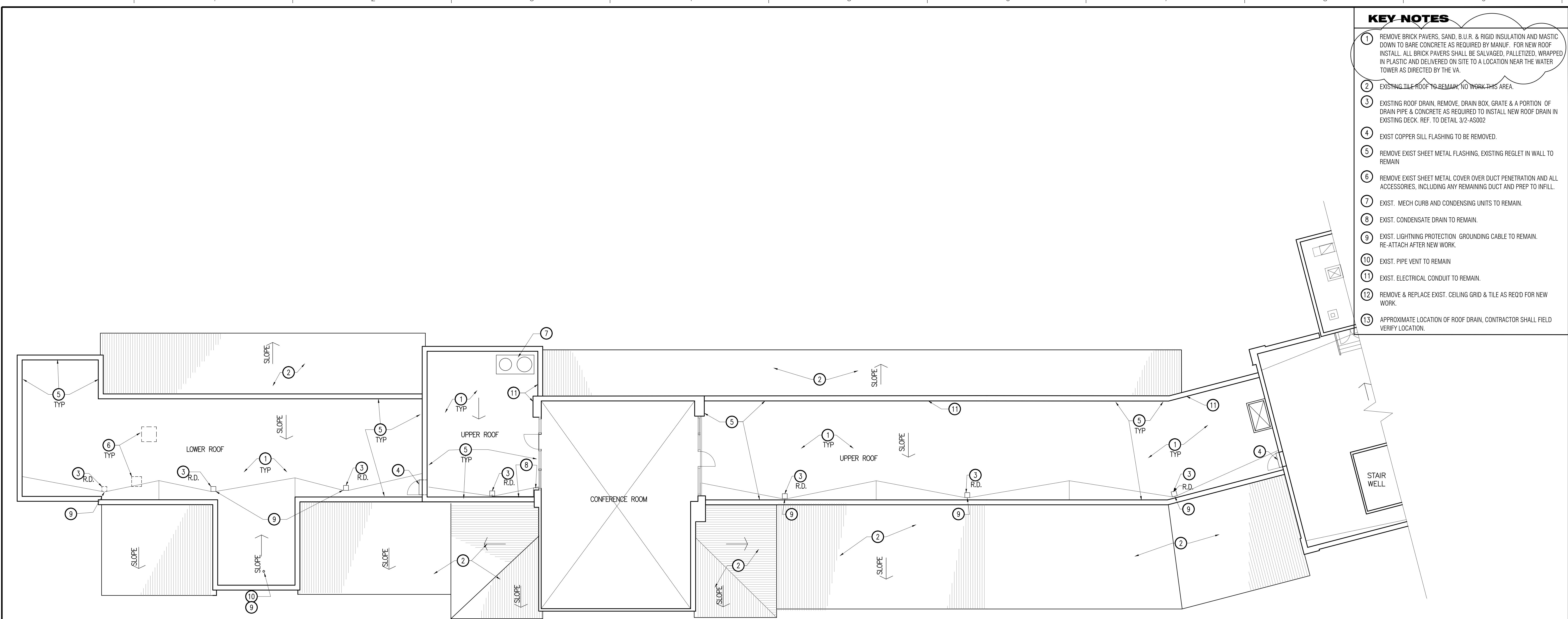
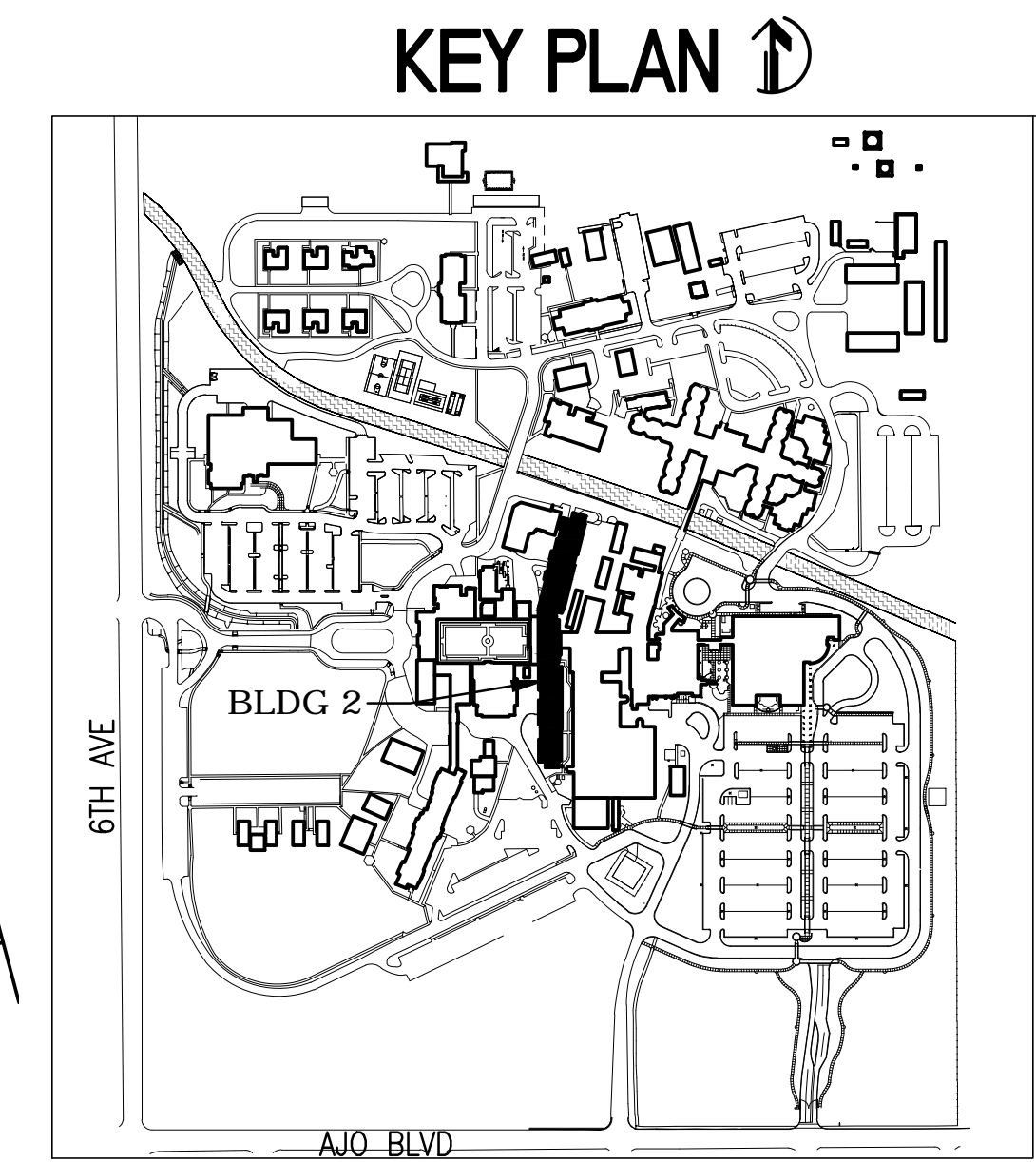
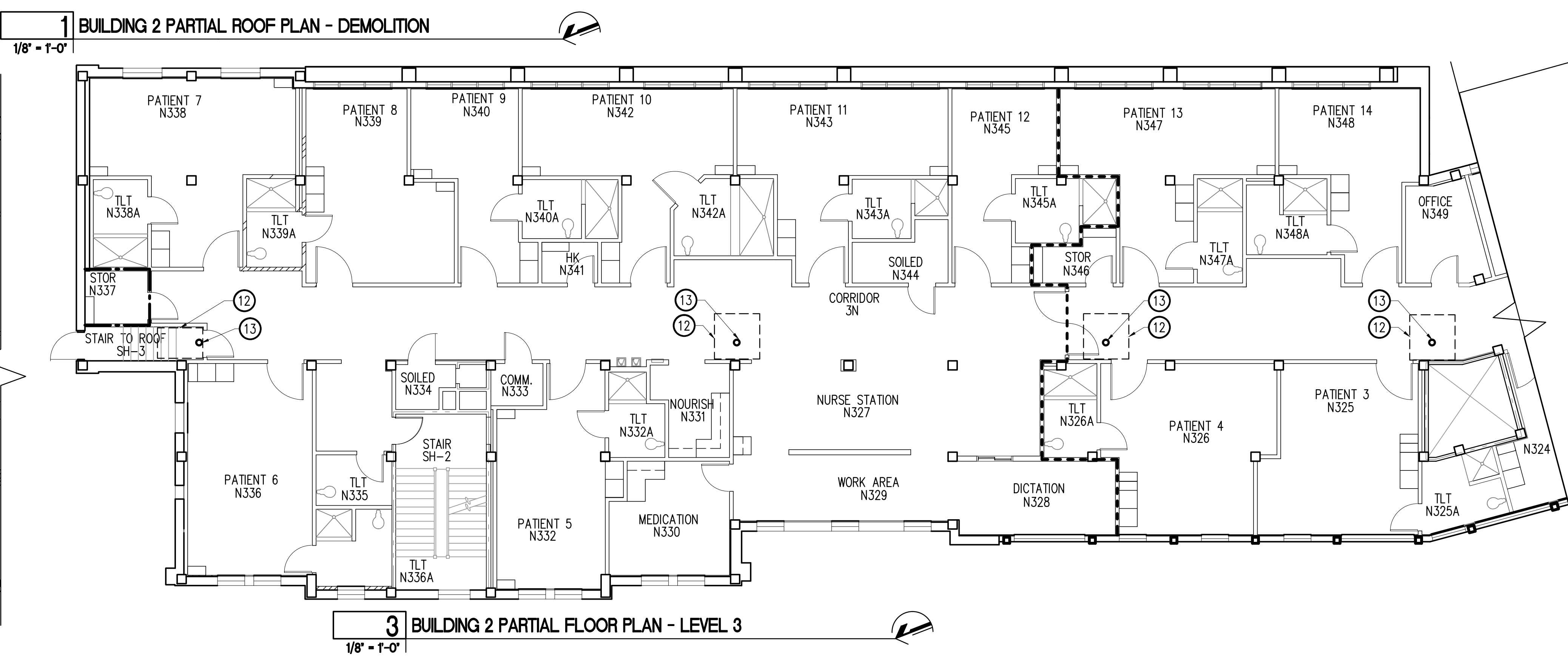
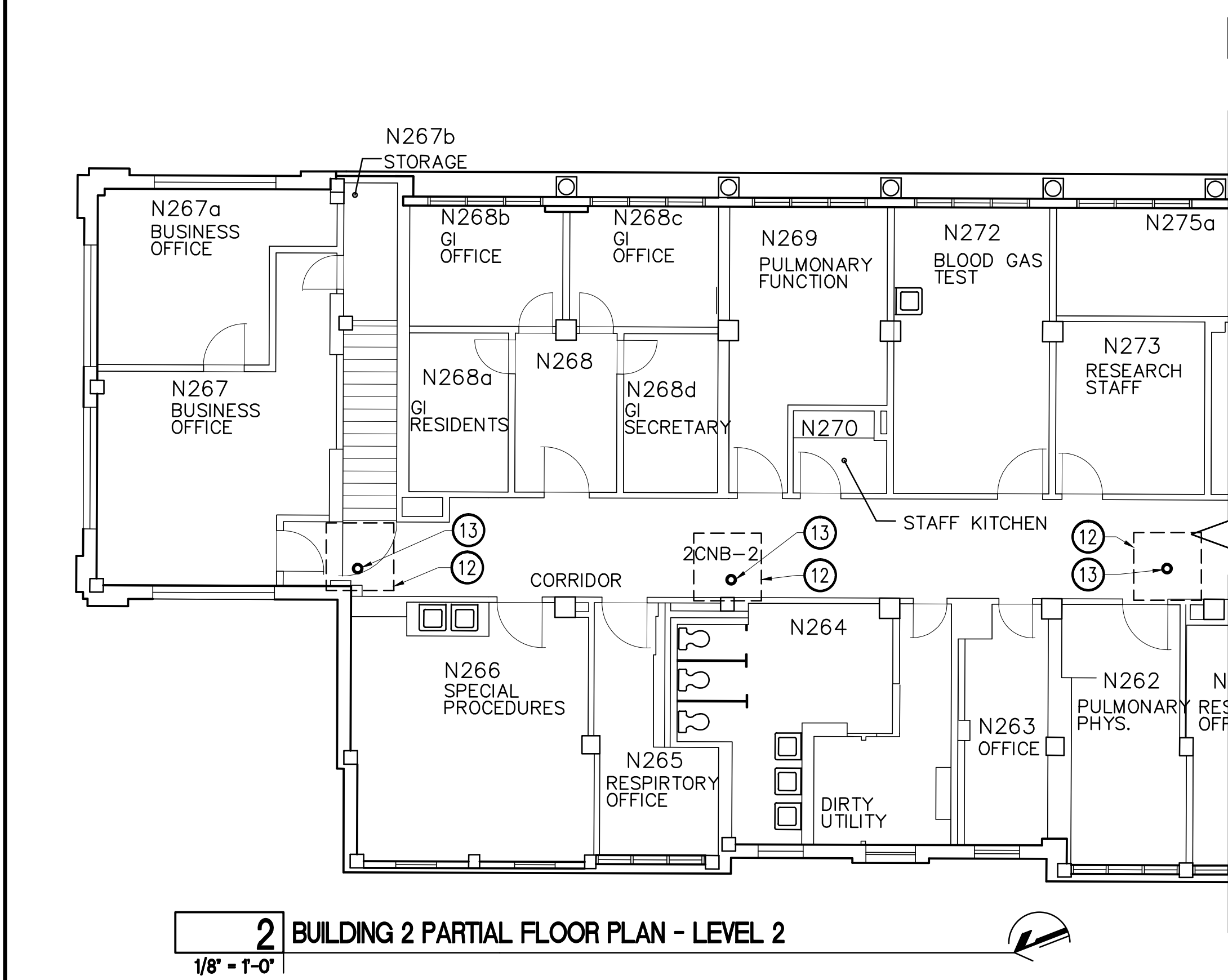





three inches = one foot
one and one half inches = one foot
one inch = one foot
three quarters inch = one foot
one half inch = one foot
three eighths inch = one foot
one quarter inch = one foot
one eighth inch = one foot



- ### KEY NOTES
- REMOVE BRICK PAVERS, SAND, B.U.R. & RIGID INSULATION AND MASTIC DOWN TO BARE CONCRETE AS REQUIRED BY MANUF. FOR NEW ROOF, INSTALL ALL BRICK PAVERS SHALL BE SALVAGED, PALLETIZED, WRAPPED IN PLASTIC AND DELIVERED ON SITE TO A LOCATION NEAR THE WATER TOWER AS DIRECTED BY THE VA.
 - EXISTING TILE ROOF TO REMAIN, NO WORK THIS AREA.
 - EXISTING ROOF DRAIN, REMOVE, DRAIN BOX, GRATE & A PORTION OF DRAIN PIPE & CONCRETE AS REQUIRED TO INSTALL NEW ROOF DRAIN IN EXISTING DECK. REF. TO DETAIL 3/2-AS002
 - EXIST COPPER SILL FLASHING TO BE REMOVED.
 - REMOVE EXIST SHEET METAL FLASHING, EXISTING REGLET IN WALL TO REMAIN
 - REMOVE EXIST SHEET METAL COVER OVER DUCT PENETRATION AND ALL ACCESSORIES, INCLUDING ANY REMAINING DUCT AND PREP TO INFILL.
 - EXIST. MECH CURB AND CONDENSING UNITS TO REMAIN.
 - EXIST. CONDENSATE DRAIN TO REMAIN.
 - EXIST. LIGHTNING PROTECTION GROUNDING CABLE TO REMAIN. RE-ATTACH AFTER NEW WORK.
 - EXIST. PIPE VENT TO REMAIN
 - EXIST. ELECTRICAL CONDUIT TO REMAIN.
 - REMOVE & REPLACE EXIST. CEILING GRID & TILE AS REQ'D FOR NEW WORK.
 - APPROXIMATE LOCATION OF ROOF DRAIN, CONTRACTOR SHALL FIELD VERIFY LOCATION.



FULLY SPRINKLERED
BID SET

BIDDERS RFI 8.1.12		CONSULTANTS:		<div></div>		ARCHITECT/ENGINEERS:		<div><div>SBBL Architecture + Planning 1001 North Alvernon Way #105, Tucson, Arizona 85711 e: sbbl@sbbl.biz</div></div>		<div>Drawing Title BUILDING 2 PARTIAL ROOF PLAN - DEMO</div> <div>Approved:</div>		<div>Project Title REPLACE VARIOUS ROOFS</div> <div>Location SAVAHCS Tucson, Arizona</div> <div>Date 08/1/2012</div> <div>Checked KI</div> <div>Drawn PP</div>		<div>Project Number 678-12-103</div> <div>Building Number 2</div> <div>Drawing Number 2-AS001</div> <div>Dwg. 3 of 13</div>		<div>Office of Construction and Facilities Management</div> <div> Department of Veterans Affairs</div>	
Revisions:		Date															