

EXIT STAIR  
MOVED TO  
NORTH WALL

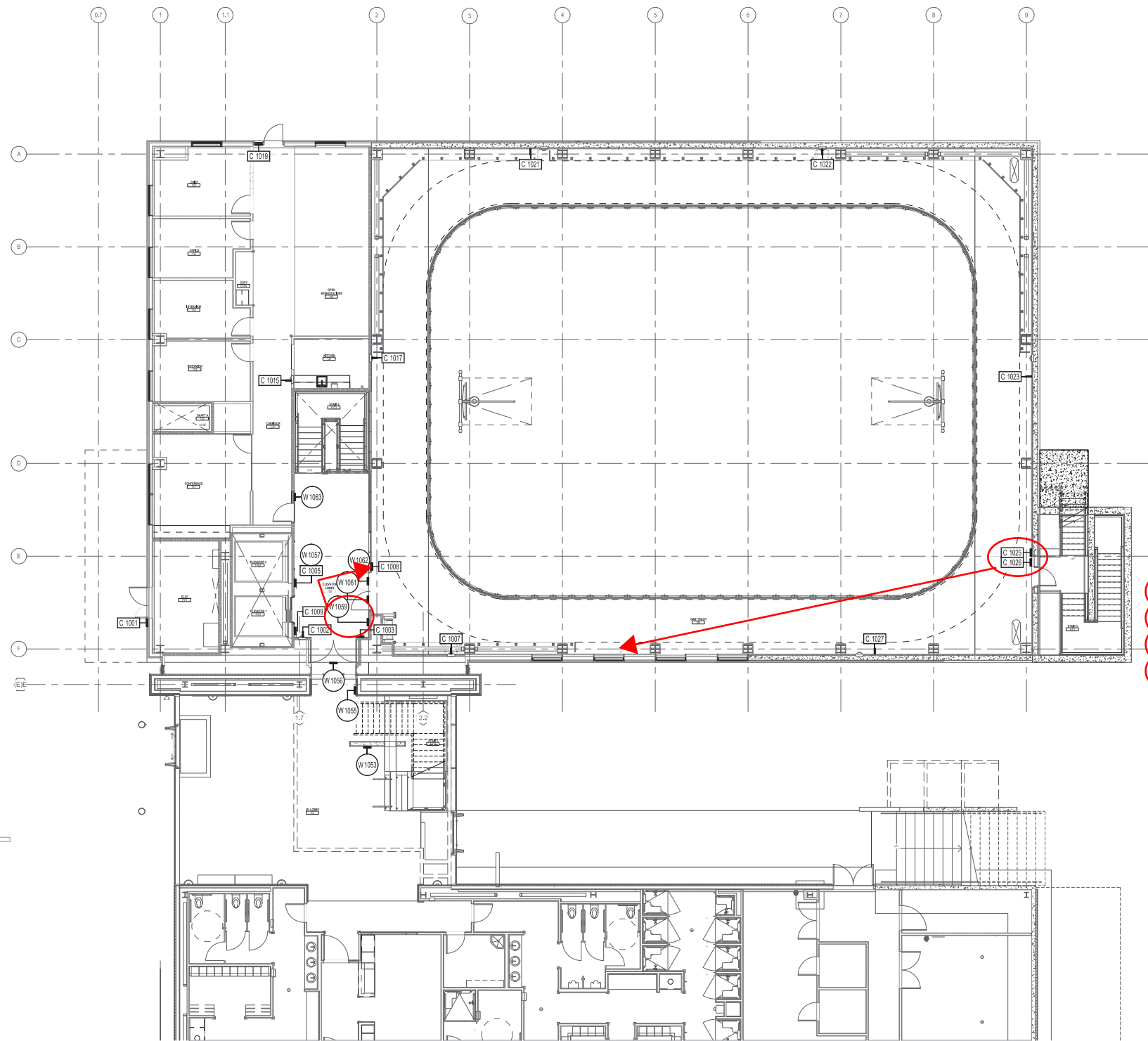
FOR INFORMATIONAL  
PURPOSE ONLY



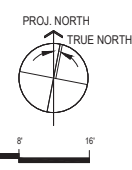
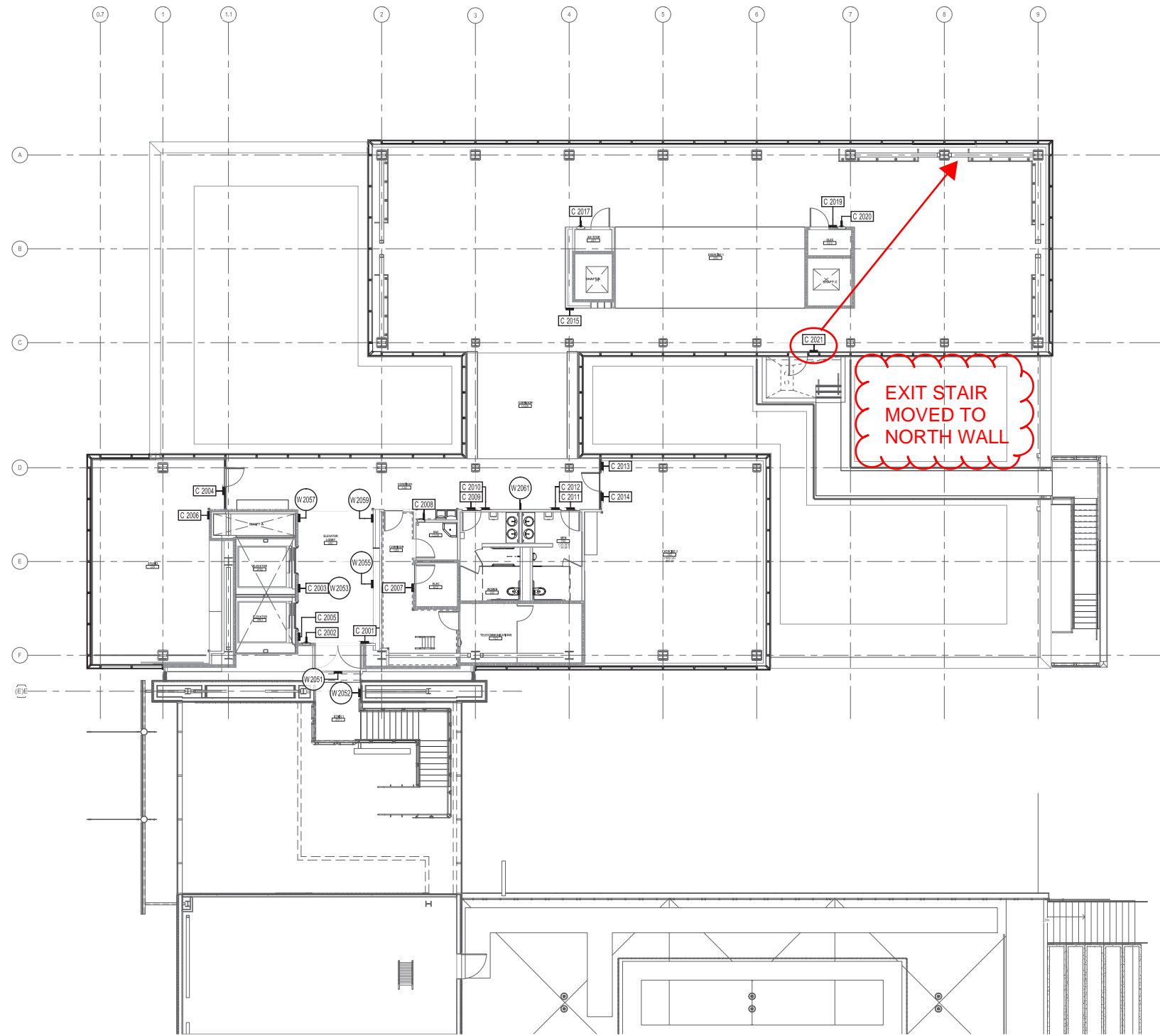
Department of  
Veterans Affairs

		CONSULTANTS:		Seals and Signatures	ARCHITECT/ENGINEERS:		Drawing Title		Project Title	
							SIGN LOCATION PLAN LEVEL B		CENTERS FOR AMBULATORY CARE, POLYTRAUMA AND BLIND REHABILITATION RECREATION SERVICES	
							Approved: Project Director		Location	
									3801 Miranda Ave., Palo Alto CA	
							Date		Checked	Drawn
							10 MAY 2013		JD	JD
							Revisions:		Date	

1/8" = 1'-0"  
1/4" = 3'-0"  
1/2" = 6'-0"  
3/4" = 9'-0"  
1" = 12'-0"  
1 1/4" = 15'-0"  
1 1/2" = 18'-0"  
1 3/4" = 21'-0"  
2" = 24'-0"  
2 1/4" = 27'-0"  
2 1/2" = 30'-0"  
2 3/4" = 33'-0"  
3" = 36'-0"  
3 1/4" = 39'-0"  
3 1/2" = 42'-0"  
3 3/4" = 45'-0"  
4" = 48'-0"  
4 1/4" = 51'-0"  
4 1/2" = 54'-0"  
4 3/4" = 57'-0"  
5" = 60'-0"  
5 1/4" = 63'-0"  
5 1/2" = 66'-0"  
5 3/4" = 69'-0"  
6" = 72'-0"  
6 1/4" = 75'-0"  
6 1/2" = 78'-0"  
6 3/4" = 81'-0"  
7" = 84'-0"  
7 1/4" = 87'-0"  
7 1/2" = 90'-0"  
7 3/4" = 93'-0"  
8" = 96'-0"  
8 1/4" = 99'-0"  
8 1/2" = 102'-0"  
8 3/4" = 105'-0"  
9" = 108'-0"  
9 1/4" = 111'-0"  
9 1/2" = 114'-0"  
9 3/4" = 117'-0"  
10" = 120'-0"  
10 1/4" = 123'-0"  
10 1/2" = 126'-0"  
10 3/4" = 129'-0"  
11" = 132'-0"  
11 1/4" = 135'-0"  
11 1/2" = 138'-0"  
11 3/4" = 141'-0"  
12" = 144'-0"  
12 1/4" = 147'-0"  
12 1/2" = 150'-0"  
12 3/4" = 153'-0"  
13" = 156'-0"  
13 1/4" = 159'-0"  
13 1/2" = 162'-0"  
13 3/4" = 165'-0"  
14" = 168'-0"  
14 1/4" = 171'-0"  
14 1/2" = 174'-0"  
14 3/4" = 177'-0"  
15" = 180'-0"  
15 1/4" = 183'-0"  
15 1/2" = 186'-0"  
15 3/4" = 189'-0"  
16" = 192'-0"  
16 1/4" = 195'-0"  
16 1/2" = 198'-0"  
16 3/4" = 201'-0"  
17" = 204'-0"  
17 1/4" = 207'-0"  
17 1/2" = 210'-0"  
17 3/4" = 213'-0"  
18" = 216'-0"  
18 1/4" = 219'-0"  
18 1/2" = 222'-0"  
18 3/4" = 225'-0"  
19" = 228'-0"  
19 1/4" = 231'-0"  
19 1/2" = 234'-0"  
19 3/4" = 237'-0"  
20" = 240'-0"  
20 1/4" = 243'-0"  
20 1/2" = 246'-0"  
20 3/4" = 249'-0"  
21" = 252'-0"  
21 1/4" = 255'-0"  
21 1/2" = 258'-0"  
21 3/4" = 261'-0"  
22" = 264'-0"  
22 1/4" = 267'-0"  
22 1/2" = 270'-0"  
22 3/4" = 273'-0"  
23" = 276'-0"  
23 1/4" = 279'-0"  
23 1/2" = 282'-0"  
23 3/4" = 285'-0"  
24" = 288'-0"  
24 1/4" = 291'-0"  
24 1/2" = 294'-0"  
24 3/4" = 297'-0"  
25" = 300'-0"  
25 1/4" = 303'-0"  
25 1/2" = 306'-0"  
25 3/4" = 309'-0"  
26" = 312'-0"  
26 1/4" = 315'-0"  
26 1/2" = 318'-0"  
26 3/4" = 321'-0"  
27" = 324'-0"  
27 1/4" = 327'-0"  
27 1/2" = 330'-0"  
27 3/4" = 333'-0"  
28" = 336'-0"  
28 1/4" = 339'-0"  
28 1/2" = 342'-0"  
28 3/4" = 345'-0"  
29" = 348'-0"  
29 1/4" = 351'-0"  
29 1/2" = 354'-0"  
29 3/4" = 357'-0"  
30" = 360'-0"  
30 1/4" = 363'-0"  
30 1/2" = 366'-0"  
30 3/4" = 369'-0"  
31" = 372'-0"  
31 1/4" = 375'-0"  
31 1/2" = 378'-0"  
31 3/4" = 381'-0"  
32" = 384'-0"  
32 1/4" = 387'-0"  
32 1/2" = 390'-0"  
32 3/4" = 393'-0"  
33" = 396'-0"  
33 1/4" = 399'-0"  
33 1/2" = 402'-0"  
33 3/4" = 405'-0"  
34" = 408'-0"  
34 1/4" = 411'-0"  
34 1/2" = 414'-0"  
34 3/4" = 417'-0"  
35" = 420'-0"  
35 1/4" = 423'-0"  
35 1/2" = 426'-0"  
35 3/4" = 429'-0"  
36" = 432'-0"  
36 1/4" = 435'-0"  
36 1/2" = 438'-0"  
36 3/4" = 441'-0"  
37" = 444'-0"  
37 1/4" = 447'-0"  
37 1/2" = 450'-0"  
37 3/4" = 453'-0"  
38" = 456'-0"  
38 1/4" = 459'-0"  
38 1/2" = 462'-0"  
38 3/4" = 465'-0"  
39" = 468'-0"  
39 1/4" = 471'-0"  
39 1/2" = 474'-0"  
39 3/4" = 477'-0"  
40" = 480'-0"  
40 1/4" = 483'-0"  
40 1/2" = 486'-0"  
40 3/4" = 489'-0"  
41" = 492'-0"  
41 1/4" = 495'-0"  
41 1/2" = 498'-0"  
41 3/4" = 501'-0"  
42" = 504'-0"  
42 1/4" = 507'-0"  
42 1/2" = 510'-0"  
42 3/4" = 513'-0"  
43" = 516'-0"  
43 1/4" = 519'-0"  
43 1/2" = 522'-0"  
43 3/4" = 525'-0"  
44" = 528'-0"  
44 1/4" = 531'-0"  
44 1/2" = 534'-0"  
44 3/4" = 537'-0"  
45" = 540'-0"  
45 1/4" = 543'-0"  
45 1/2" = 546'-0"  
45 3/4" = 549'-0"  
46" = 552'-0"  
46 1/4" = 555'-0"  
46 1/2" = 558'-0"  
46 3/4" = 561'-0"  
47" = 564'-0"  
47 1/4" = 567'-0"  
47 1/2" = 570'-0"  
47 3/4" = 573'-0"  
48" = 576'-0"  
48 1/4" = 579'-0"  
48 1/2" = 582'-0"  
48 3/4" = 585'-0"  
49" = 588'-0"  
49 1/4" = 591'-0"  
49 1/2" = 594'-0"  
49 3/4" = 597'-0"  
50" = 600'-0"  
50 1/4" = 603'-0"  
50 1/2" = 606'-0"  
50 3/4" = 609'-0"  
51" = 612'-0"  
51 1/4" = 615'-0"  
51 1/2" = 618'-0"  
51 3/4" = 621'-0"  
52" = 624'-0"  
52 1/4" = 627'-0"  
52 1/2" = 630'-0"  
52 3/4" = 633'-0"  
53" = 636'-0"  
53 1/4" = 639'-0"  
53 1/2" = 642'-0"  
53 3/4" = 645'-0"  
54" = 648'-0"  
54 1/4" = 651'-0"  
54 1/2" = 654'-0"  
54 3/4" = 657'-0"  
55" = 660'-0"  
55 1/4" = 663'-0"  
55 1/2" = 666'-0"  
55 3/4" = 669'-0"  
56" = 672'-0"  
56 1/4" = 675'-0"  
56 1/2" = 678'-0"  
56 3/4" = 681'-0"  
57" = 684'-0"  
57 1/4" = 687'-0"  
57 1/2" = 690'-0"  
57 3/4" = 693'-0"  
58" = 696'-0"  
58 1/4" = 699'-0"  
58 1/2" = 702'-0"  
58 3/4" = 705'-0"  
59" = 708'-0"  
59 1/4" = 711'-0"  
59 1/2" = 714'-0"  
59 3/4" = 717'-0"  
60" = 720'-0"  
60 1/4" = 723'-0"  
60 1/2" = 726'-0"  
60 3/4" = 729'-0"  
61" = 732'-0"  
61 1/4" = 735'-0"  
61 1/2" = 738'-0"  
61 3/4" = 741'-0"  
62" = 744'-0"  
62 1/4" = 747'-0"  
62 1/2" = 750'-0"  
62 3/4" = 753'-0"  
63" = 756'-0"  
63 1/4" = 759'-0"  
63 1/2" = 762'-0"  
63 3/4" = 765'-0"  
64" = 768'-0"  
64 1/4" = 771'-0"  
64 1/2" = 774'-0"  
64 3/4" = 777'-0"  
65" = 780'-0"  
65 1/4" = 783'-0"  
65 1/2" = 786'-0"  
65 3/4" = 789'-0"  
66" = 792'-0"  
66 1/4" = 795'-0"  
66 1/2" = 798'-0"  
66 3/4" = 801'-0"  
67" = 804'-0"  
67 1/4" = 807'-0"  
67 1/2" = 810'-0"  
67 3/4" = 813'-0"  
68" = 816'-0"  
68 1/4" = 819'-0"  
68 1/2" = 822'-0"  
68 3/4" = 825'-0"  
69" = 828'-0"  
69 1/4" = 831'-0"  
69 1/2" = 834'-0"  
69 3/4" = 837'-0"  
70" = 840'-0"  
70 1/4" = 843'-0"  
70 1/2" = 846'-0"  
70 3/4" = 849'-0"  
71" = 852'-0"  
71 1/4" = 855'-0"  
71 1/2" = 858'-0"  
71 3/4" = 861'-0"  
72" = 864'-0"  
72 1/4" = 867'-0"  
72 1/2" = 870'-0"  
72 3/4" = 873'-0"  
73" = 876'-0"  
73 1/4" = 879'-0"  
73 1/2" = 882'-0"  
73 3/4" = 885'-0"  
74" = 888'-0"  
74 1/4" = 891'-0"  
74 1/2" = 894'-0"  
74 3/4" = 897'-0"  
75" = 900'-0"  
75 1/4" = 903'-0"  
75 1/2" = 906'-0"  
75 3/4" = 909'-0"  
76" = 912'-0"  
76 1/4" = 915'-0"  
76 1/2" = 918'-0"  
76 3/4" = 921'-0"  
77" = 924'-0"  
77 1/4" = 927'-0"  
77 1/2" = 930'-0"  
77 3/4" = 933'-0"  
78" = 936'-0"  
78 1/4" = 939'-0"  
78 1/2" = 942'-0"  
78 3/4" = 945'-0"  
79" = 948'-0"  
79 1/4" = 951'-0"  
79 1/2" = 954'-0"  
79 3/4" = 957'-0"  
80" = 960'-0"  
80 1/4" = 963'-0"  
80 1/2" = 966'-0"  
80 3/4" = 969'-0"  
81" = 972'-0"  
81 1/4" = 975'-0"  
81 1/2" = 978'-0"  
81 3/4" = 981'-0"  
82" = 984'-0"  
82 1/4" = 987'-0"  
82 1/2" = 990'-0"  
82 3/4" = 993'-0"  
83" = 996'-0"  
83 1/4" = 999'-0"  
83 1/2" = 1002'-0"  
83 3/4" = 1005'-0"  
84" = 1008'-0"  
84 1/4" = 1011'-0"  
84 1/2" = 1014'-0"  
84 3/4" = 1017'-0"  
85" = 1020'-0"  
85 1/4" = 1023'-0"  
85 1/2" = 1026'-0"  
85 3/4" = 1029'-0"  
86" = 1032'-0"  
86 1/4" = 1035'-0"  
86 1/2" = 1038'-0"  
86 3/4" = 1041'-0"  
87" = 1044'-0"  
87 1/4" = 1047'-0"  
87 1/2" = 1050'-0"  
87 3/4" = 1053'-0"  
88" = 1056'-0"  
88 1/4" = 1059'-0"  
88 1/2" = 1062'-0"  
88 3/4" = 1065'-0"  
89" = 1068'-0"  
89 1/4" = 1071'-0"  
89 1/2" = 1074'-0"  
89 3/4" = 1077'-0"  
90" = 1080'-0"  
90 1/4" = 1083'-0"  
90 1/2" = 1086'-0"  
90 3/4" = 1089'-0"  
91" = 1092'-0"  
91 1/4" = 1095'-0"  
91 1/2" = 1098'-0"  
91 3/4" = 1101'-0"  
92" = 1104'-0"  
92 1/4" = 1107'-0"  
92 1/2" = 1110'-0"  
92 3/4" = 1113'-0"  
93" = 1116'-0"  
93 1/4" = 1119'-0"  
93 1/2" = 1122'-0"  
93 3/4" = 1125'-0"  
94" = 1128'-0"  
94 1/4" = 1131'-0"  
94 1/2" = 1134'-0"  
94 3/4" = 1137'-0"  
95" = 1140'-0"  
95 1/4" = 1143'-0"  
95 1/2" = 1146'-0"  
95 3/4" = 1149'-0"  
96" = 1152'-0"  
96 1/4" = 1155'-0"  
96 1/2" = 1158'-0"  
96 3/4" = 1161'-0"  
97" = 1164'-0"  
97 1/4" = 1167'-0"  
97 1/2" = 1170'-0"  
97 3/4" = 1173'-0"  
98" = 1176'-0"  
98 1/4" = 1179'-0"  
98 1/2" = 1182'-0"  
98 3/4" = 1185'-0"  
99" = 1188'-0"  
99 1/4" = 1191'-0"  
99 1/2" = 1194'-0"  
99 3/4" = 1197'-0"  
100" = 1200'-0"



Three inches = one foot  
one and one half inches = one foot  
one inch = one foot  
three quarters inch = one foot  
one half inch = one foot  
three eighths inch = one foot  
one quarter inch = one foot  
one eighth inch = one foot



SHEET NOTES

C ###

CODE SIGN

W ###

WAYFINDING SIGN

CODE REQUIRED AND WAYFINDING SIGN LOCATIONS ARE SHOWN ON SIGN LOCATION PLANS WITH MARKERS. SIGN LOCATION MARKERS ARE NOT DRAWN TO SCALE. FOR ROOM IDENTIFICATION SIGNS, PLEASE REFER TO THE ARCHITECTURAL ROOM NUMBER CENTERED IN EACH ROOM OR AREA ON SIGN LOCATION PLANS. THIS NUMBER IS CROSS REFERENCED TO THE SIGN SCHEDULE WHICH IS PART OF THE SPECIFICATIONS FOR THIS PROJECT, SECTION 10 14 00.

DETAIL PAGES OF EACH SIGN TYPE FOLLOW THE SIGN LOCATION PLANS IN THIS DRAWING SET. THE SIGN SCHEDULE MUST BE USED FOR COMPLETE REVIEW OF PROGRAM.

KEYNOTES

FOR INFORMATIONAL  
PURPOSE ONLY

FULLY SPRINKLERED  
CONSTRUCTION DOCUMENTS

Office of  
Construction  
and Facilities  
Management

Department of  
Veterans Affairs

Project Title	Project Number	Office of Construction and Facilities Management	
CENTERS FOR AMBULATORY CARE, POLYTRAUMA AND BLIND REHABILITATION RECREATION SERVICES	640-424		
Location	Building Number		
3801 Miranda Ave., Palo Alto CA	530		
Date	Checked	Drawn	Drawing Number
10 MAY 2013	JD	JD	AG1.1.2

Revisions:	Date	CONSULTANTS:	Seals and Signatures	ARCHITECT/ENGINEERS:	Drawing Title	Project Title	Project Number	Office of Construction and Facilities Management	
					SIGN LOCATION PLAN LEVEL 2	CENTERS FOR AMBULATORY CARE, POLYTRAUMA AND BLIND REHABILITATION RECREATION SERVICES	640-424		
					Approved: Project Director	Location	Building Number		
						3801 Miranda Ave., Palo Alto CA	530		
						Date	Checked	Drawn	Drawing Number
						10 MAY 2013	JD	JD	AG1.1.2

VA FORM 08-6231

SHEET NOTES

C#### CODE SIGN

W#### WAYFINDING SIGN

CODE REQUIRED AND WAYFINDING SIGN LOCATIONS ARE SHOWN ON SIGN LOCATION PLANS WITH MARKERS. SIGN LOCATION MARKERS ARE NOT DRAWN TO SCALE. FOR ROOM IDENTIFICATION SIGNS, PLEASE REFER TO THE ARCHITECTURAL ROOM NUMBER CENTERED IN EACH ROOM OR AREA ON SIGN LOCATION PLANS. THIS NUMBER IS CROSS REFERENCED TO THE SIGN SCHEDULE WHICH IS PART OF THE SPECIFICATIONS FOR THIS PROJECT, SECTION 10 14 00.

DETAIL PAGES OF EACH SIGN TYPE FOLLOW THE SIGN LOCATION PLANS IN THIS DRAWING SET. THE SIGN SCHEDULE MUST BE USED FOR COMPLETE REVIEW OF PROGRAM.

19 ROOM MATERIAL AND FINISH CODE

ALL CODES ON THIS SCHEDULE MAY NOT HAVE BEEN USED.

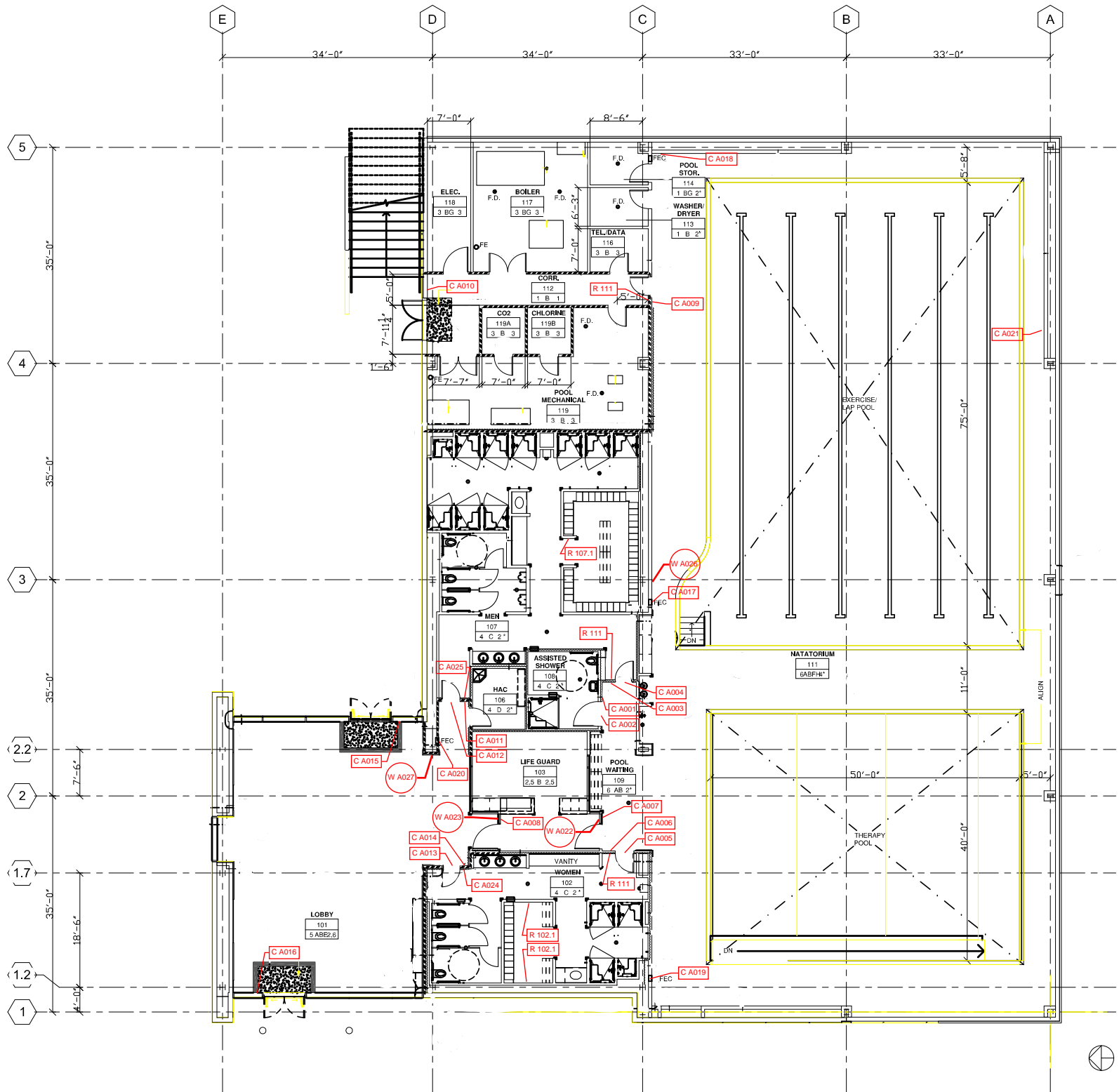
SYMBOLS SHOWN ON PLAN

FLOOR 102 ROOM NUMBER  
2 B 2" FINISH CODE  
WALL \* DENOTES EPOXY PAINT  
CEILING

FLOOR / BASE	
0	SPECIAL
1	RESILIENT TILE / RB-2 RUBBER BASE
2	CP-1 / RB-1 RUBBER BASE
3	CONCRETE, EC-1 EPOXY COATING / RB-2 RUBBER BASE
4	CERAMIC TILE / CERAMIC TILE
5	PORCELAIN TILE / STONE BASE
6	CONCRETE / STONE BASE WHERE OCCURS

WALL / WAINSCOT	
A	SPECIAL
B	GYPSUM WALLBOARD, PAINTED
C	CERAMIC TILE
D	GYPSUM WALLBOARD / CERAMIC TILE
E	WOOD VENEER WALL PANEL
F	PORCELAIN TILE
G	EXPOSED CONCRETE
H	SKIM COAT ON EXPOSED CONCRETE, PAINTED

CEILING	
0	SPECIAL
1	ACT-2 ACOUSTICAL CEILING TILE
2	GYPSUM WALLBOARD, PAINTED
3	EXPOSURE STRUCTURE
4	EXPOSURE STRUCTURE, PAINTED
5	ACT-1 ACOUSTICAL CEILING TILE
6	AP-1 ACOUSTICAL CEILING PANEL



1 FIRST FLOOR PLAN

1/8" = 1'-0"

FOR INFORMATIONAL  
PURPOSE ONLY

CONSULTANTS:

ARCHITECT/ENGINEERS:

Drawing Title  
**FIRST FLOOR PLAN AND ROOM  
MATERIAL AND FINISH CODE**

Project Title  
**AQUATIC THERAPY CENTER  
(FOR REFERENCE ONLY  
NOT FIELD VERIFIED)**

Project Number  
640-370 /  
640-658-100  
Building Number  
**530**

Drawing Number

**AS2-1**

Dwg. # of --

Office of  
Facilities  
Management



BID SET  
Revisions: 04-22-09  
Date