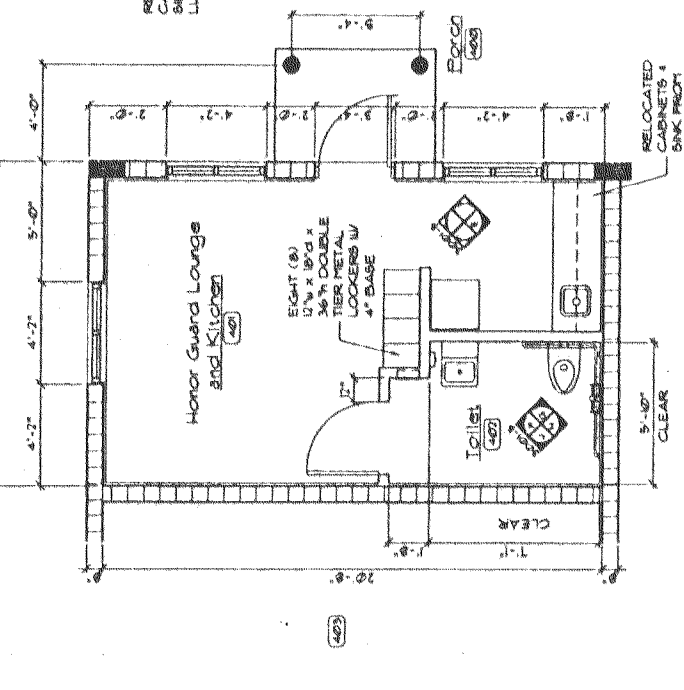
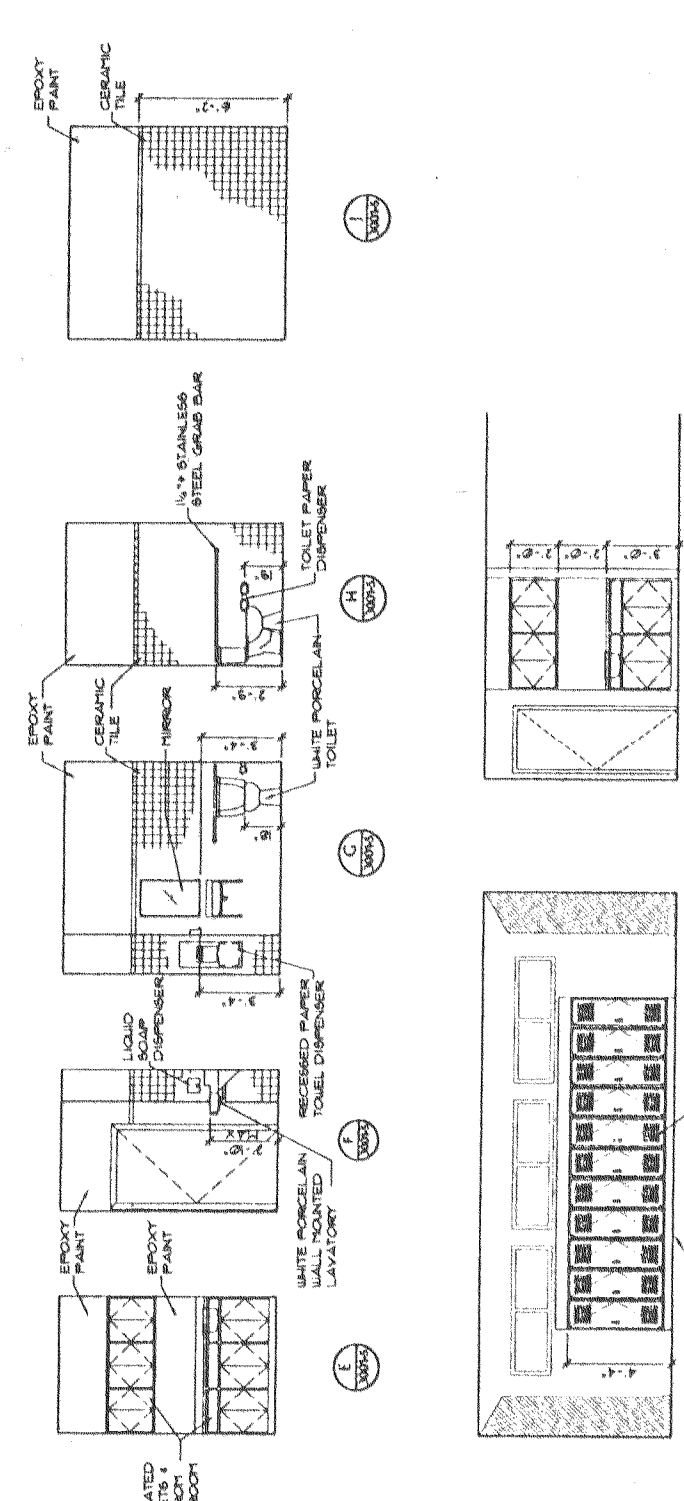


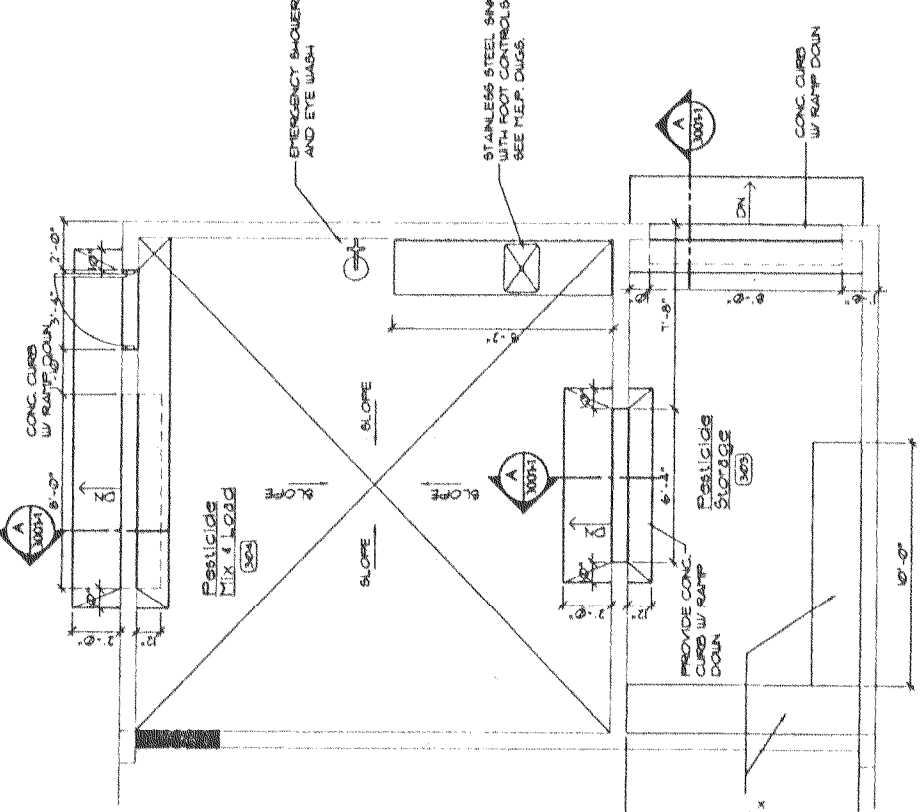
1 WORK SHOP & MEZZANINE  
30015 1/4" = 1'-0"



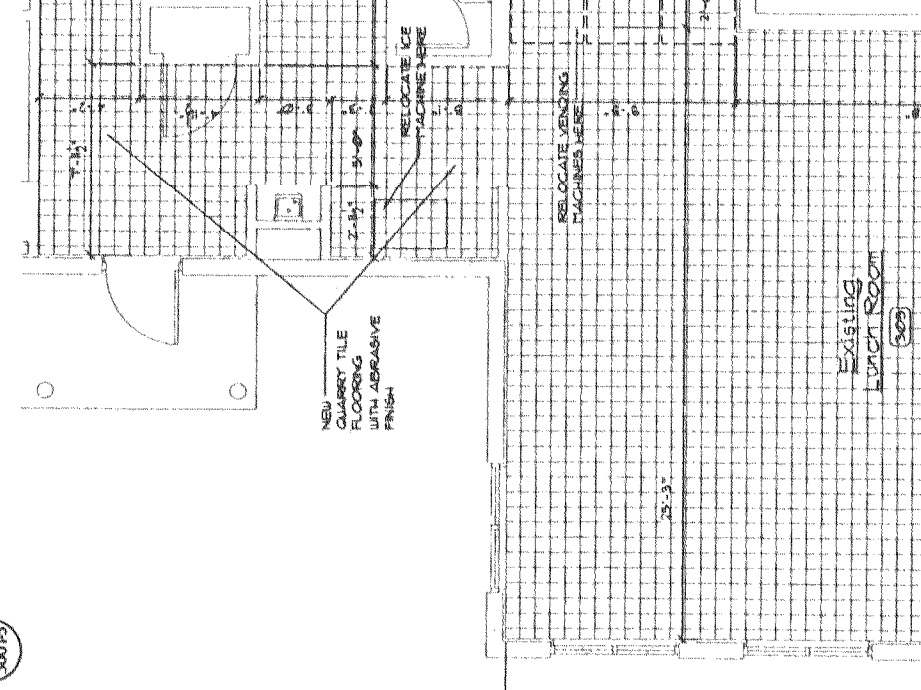
4 HONOR GUARD LOUNGE  
30015 1/4" = 1'-0"



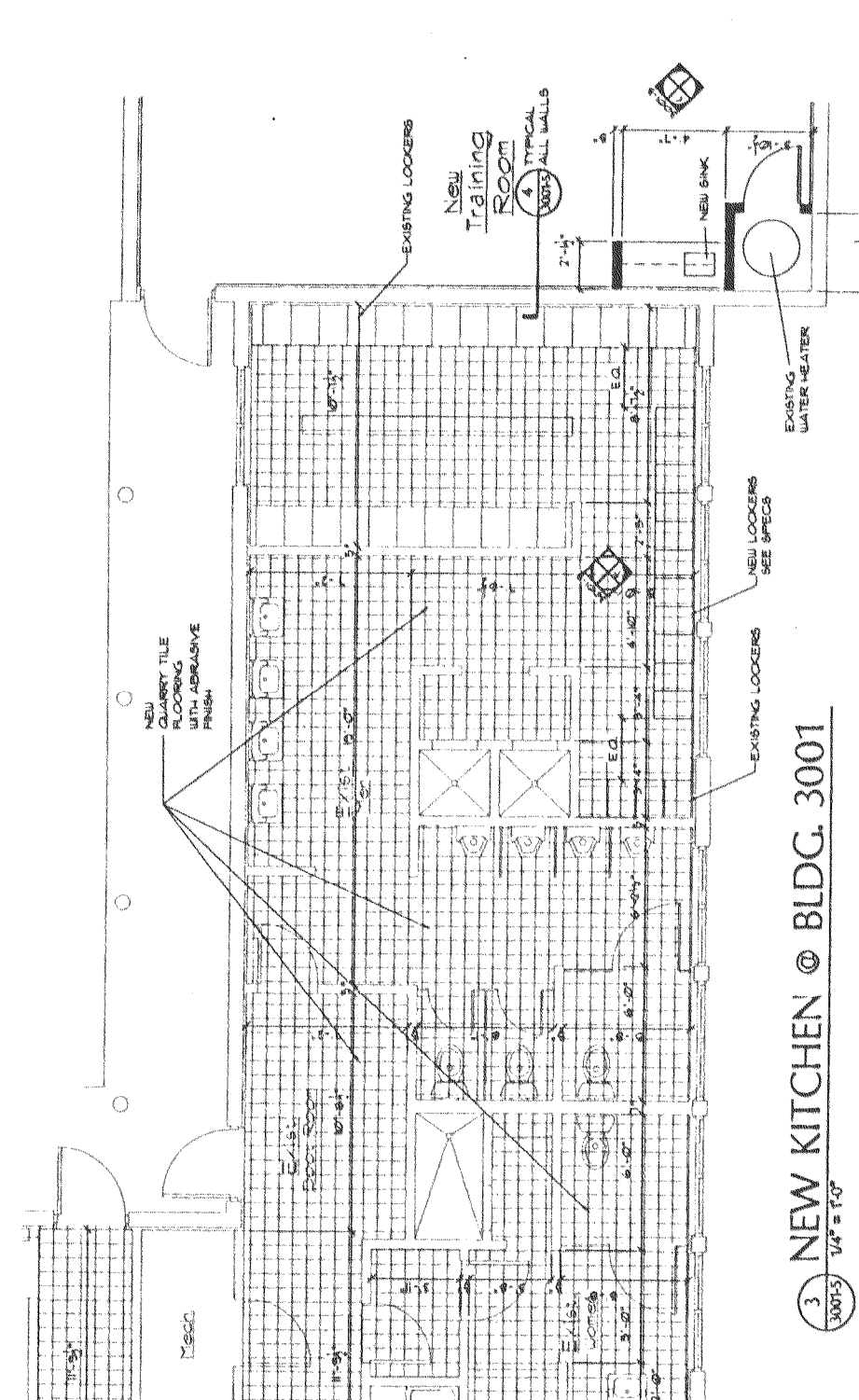
3 NEW KITCHEN @ BLDG. 3001  
30015 1/4" = 1'-0"



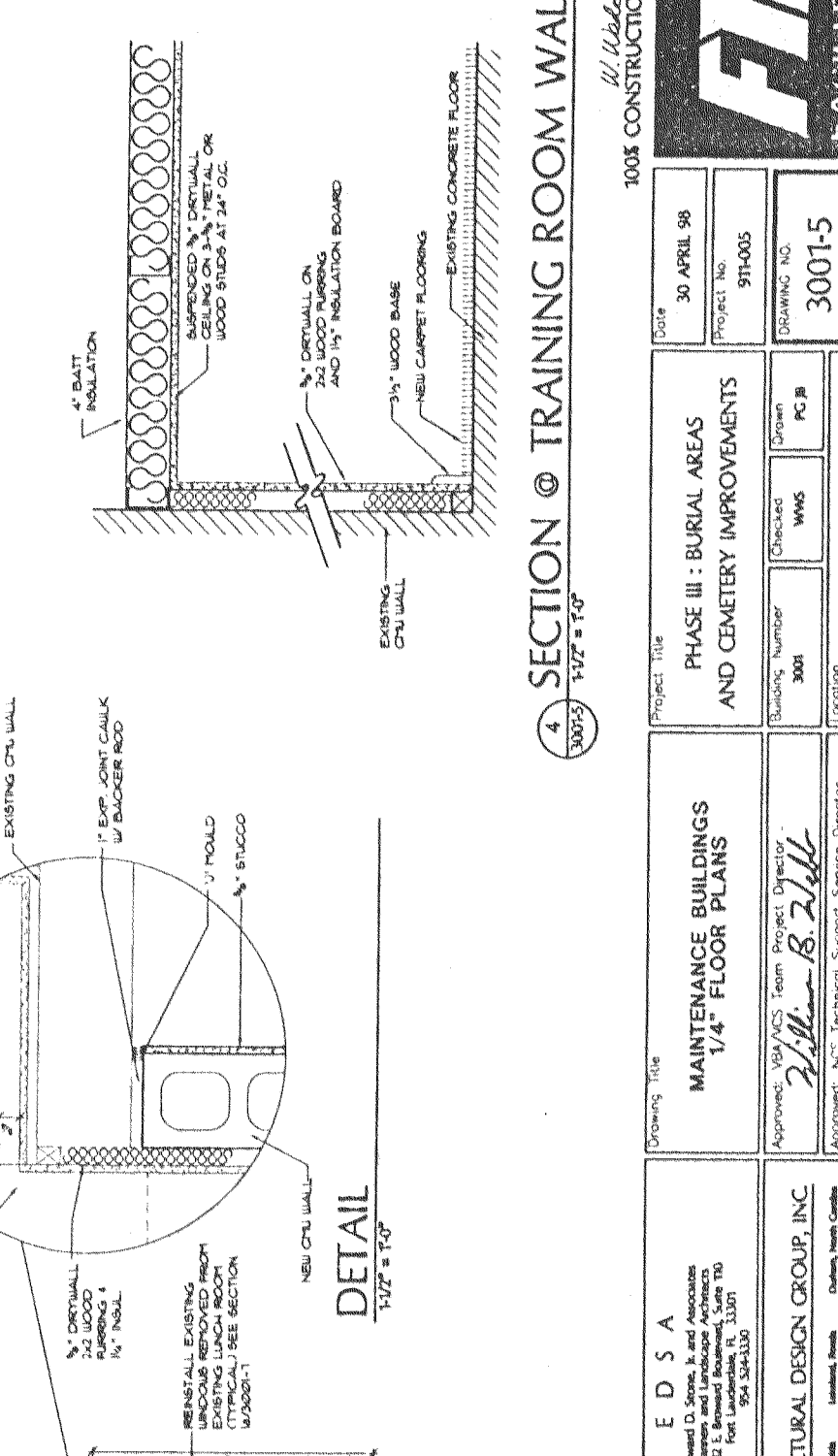
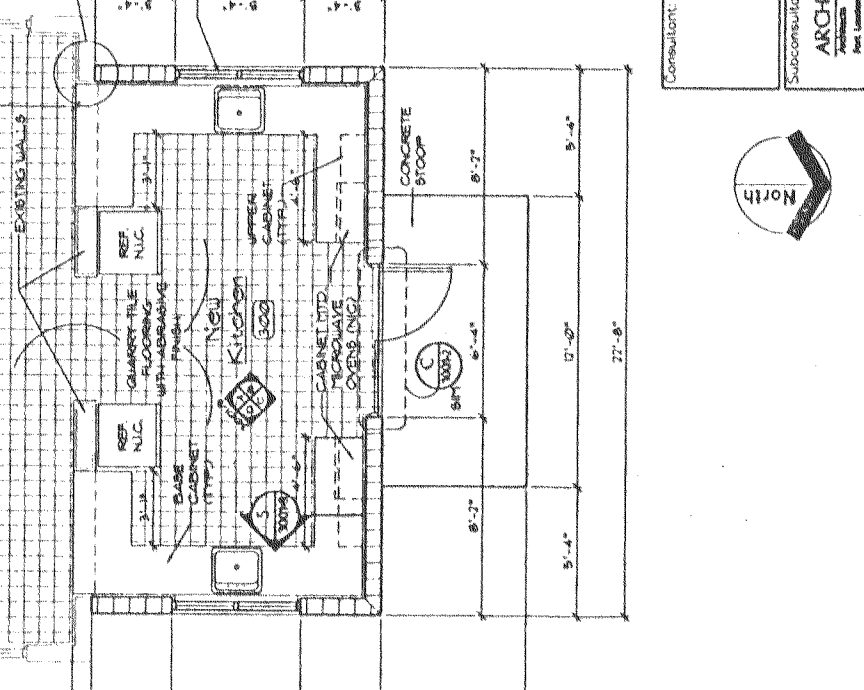
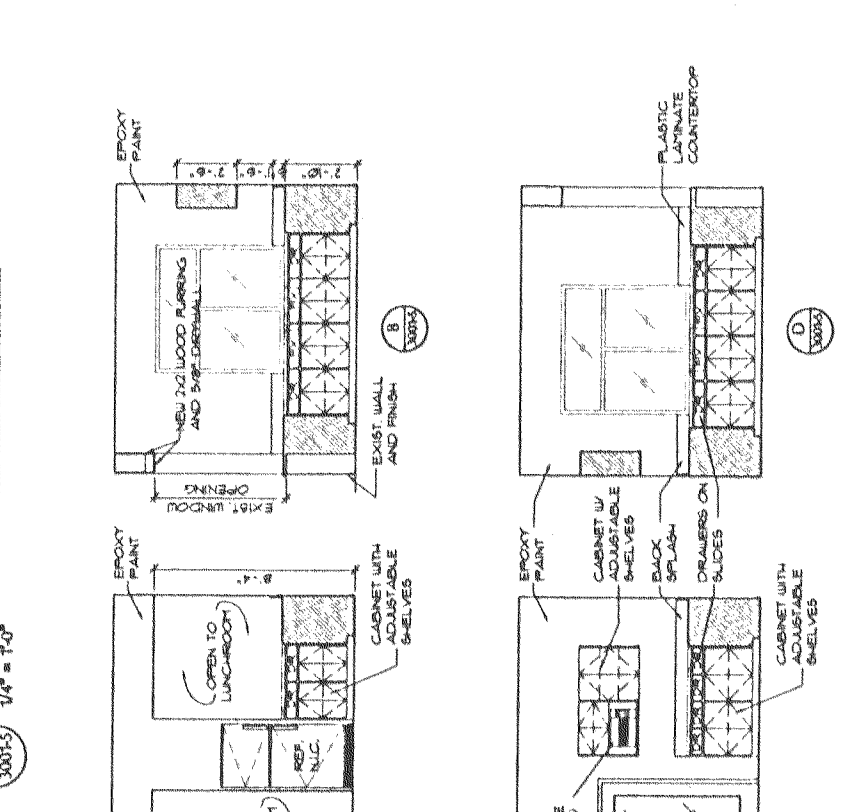
2 PESTICIDE LOADING  
30015 1/4" = 1'-0"



4 SECTION @ TRAINING ROOM WALLS  
30015 1/4" = 1'-0"



3 NEW KITCHEN @ BLDG. 3001  
30015 1/4" = 1'-0"



3 NEW KITCHEN @ BLDG. 3001  
30015 1/4" = 1'-0"

100% CONSTRUCTION DOCUMENTS

**FBI** FEDERAL BUREAU OF INVESTIGATION

Department of Justice

Project Title: MAINTENANCE BUILDINGS AND CEMETERY IMPROVEMENTS

Project No: 91-005

Drawing No: 3001-5

Date: 30 APRIL 98

Phase III: BURIAL AREAS AND CEMETERY IMPROVEMENTS

Building Number: 3001

Location: FLORIDA NATIONAL CEMETERY, BURNELL, FLORIDA

Drawn: WMS

Checked: WMS

Project Director: B. J. Wilson

Technical Services Director: Michael Wilson

Approved: B. J. Wilson

Approved: Michael Wilson

Scale: 1/4" = 1'-0"

Sheet No: 3001-5

Total Sheets: 94

Of Total: 94

Consultant: E D S A

Edward D. Stone, Jr. and Associates  
132 E. Broward Boulevard, Suite 110  
Fort Lauderdale, FL 33301  
Phone: 754-343-3333

Architectural: ARCHITECTURAL DESIGN GROUP, INC.  
132 E. Broward Boulevard, Suite 110  
Fort Lauderdale, FL 33301  
Phone: 754-343-3333

Scale: 1/4" = 1'-0"

Sheet No: 3001-5

Total Sheets: 94

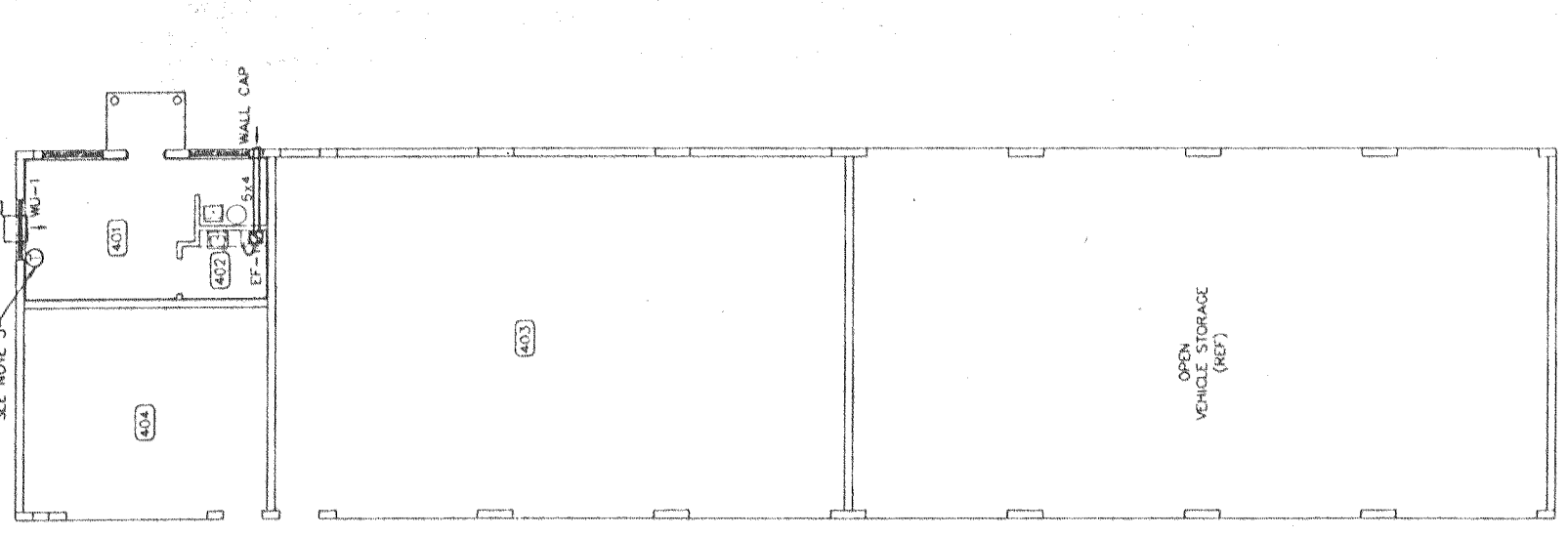
Of Total: 94

Revisions: \_\_\_\_\_ Date: \_\_\_\_\_

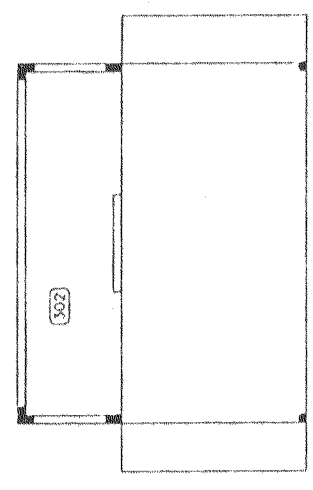
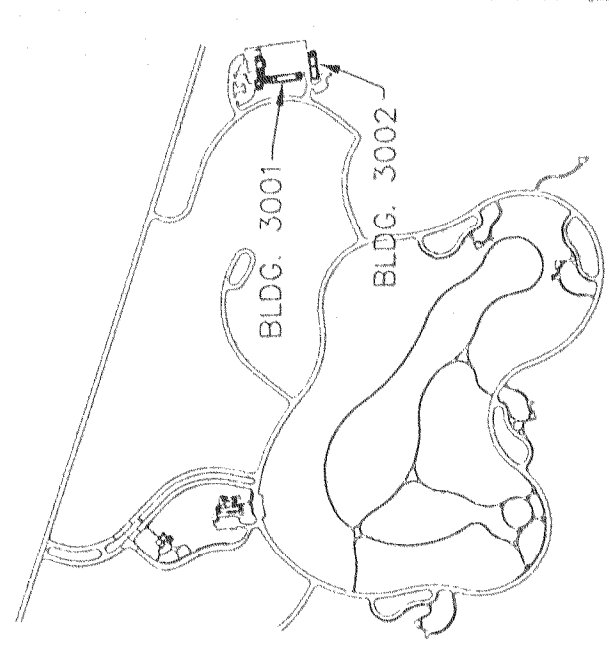




Approved 7/1/98



BLDG 3002 MECHANICAL PLAN  
1/8" = 1'-0"



**CONSTRUCTION NOTES:**

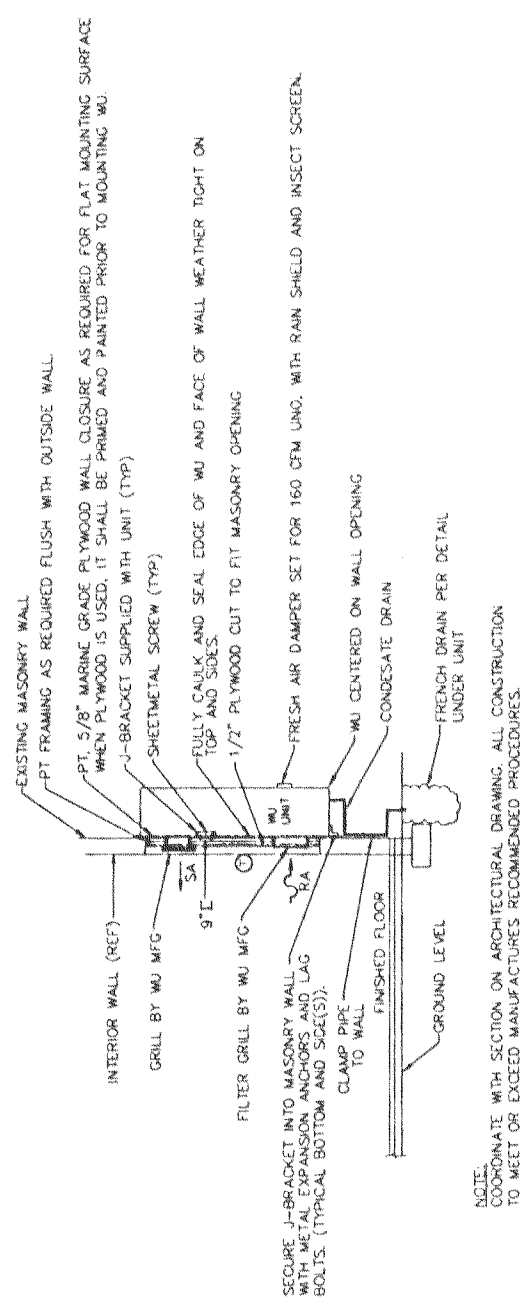
1. EXISTING BARD W/241-R100U WALL MOUNTED A/C REMOVE AND GIVE TO OWNER.
2. MOUNT NEW UNIT ON OUTSIDE OF BLDG. BUILDING WITH 3/4" EXPANSION ANCHORS IN MASONRY WALL TYPICAL 6" ON EACH SIDE. SET SUPPLY CURB AT 7'-6" AFF.
3. MOUNT LEVEL ON SLOPED ROOF WITH CORRECT CURB. COORDINATE SO AS TO CLEAR ANY ROOF SUPPORT STRUCTURE.

**DRAWING NOTES:**

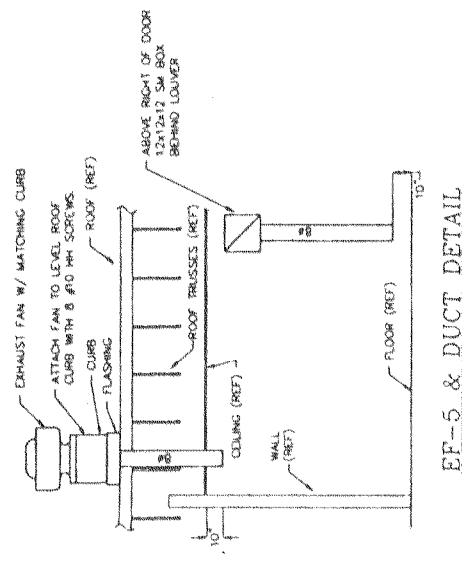
1. INSTALL SIDE WALL EXHAUST FANS 12" TO TOP OF FAN BELOW STRUCTURAL BEAMS.
2. COORDINATE WORK WITH DRAWING 3001-2.
3. EF-5 AND EF-6 RUN CONTINUOUSLY.
4. EF-1 OPERATES WITH LIGHT SWITCH.
5. WU-1 HEATS AND COOLS USING INTEGRAL THERMOSTAT AND CONTROL. OUTSIDE AIR DAMPER SET AS SCHEDULED.
6. WU-2 HEATS AND COOLS USING WALL MOUNTED STANDARD SINGLE STAGE THERMOSTAT.
7. NEW AND RENOVATED AREAS HAVE ROOM NUMBERS WORK IN THESE AREAS ARE INDICATED.

**ROOM SCHEDULE**

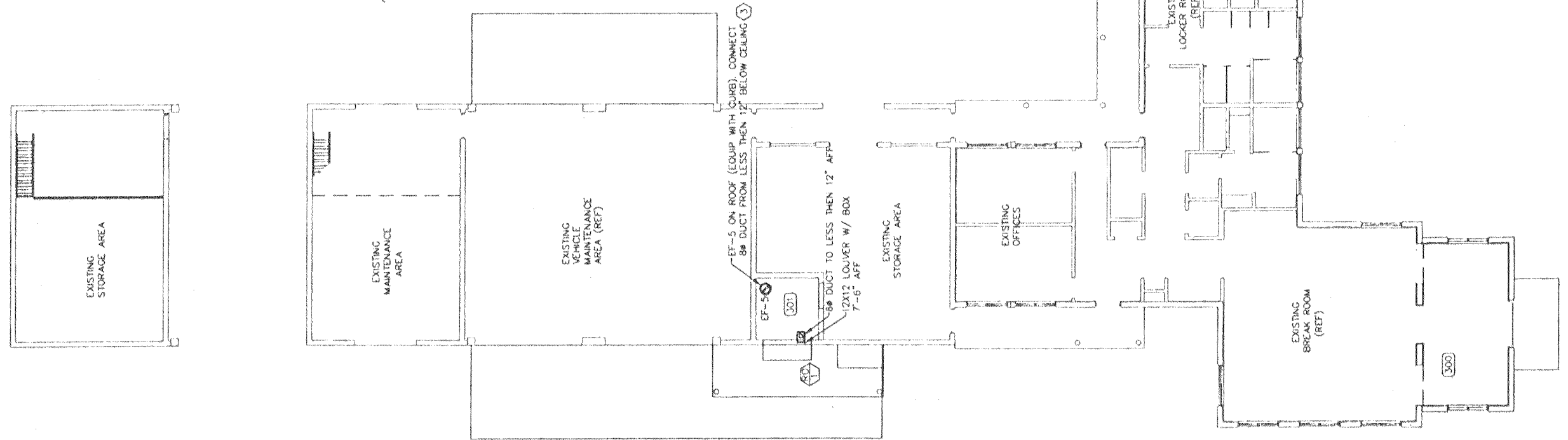
- |     |                             |
|-----|-----------------------------|
| 302 | KITCHEN                     |
| 301 | FLAMMABLE STORAGE           |
| 302 | WASH RACK                   |
| 303 | RESTROOM STORAGE            |
| 304 | MIX & LOAD                  |
| 306 | TRAINING ROOM               |
| 401 | HONOR GUARD LOUNGE          |
| 402 | TOILET                      |
| 403 | VEHICLE & EQUIPMENT STORAGE |
| 404 | MAINTENANCE BAY             |



WU-4 INSTALLATION SECTION  
N.T.S.



EF-5 & DUCT DETAIL  
N.T.S.



BLDG 3001 MECHANICAL PLAN  
1/8" = 1'-0"



### HVAC SCHEDULE

NO.	MCA (FLA)	FAN		FAN MOTOR		CAPACITY			STRIP HEATER		FILER TYPE	NOTES						
		CFM SUPPLY	EXT SP INCH	HP	VOLT/PH	SENS	TOT	EDB	EM	LBR			LMB	HEATING CAPACITY MBH	W	STEPS	VOLT/PH	WEIGHT (LBS)
WU-1	8.1	388	77	0.00	208/1	8.5	12.2	77.9	68.1	57.0	56.1	5.2	1.5	1	208/1	145	1.7A	3
WU-2	5.3	332	0	0.00	208/1	6.6	9.5	75.0	63.7	56.0	54.2	5.7	1.7	1	208/1	145	1.7A	3
WU-3	8.1	395	50	0.00	208/1	8.7	13.2	77.0	66.2	57.0	55.5	6.4	1.9	1	208/1	188	1.7A	3
WU-4	31.0	1155	300	0.00	208/1	17.0	34.6	75.0	65.0	61.5	60.0	13.6	4	1	208/1	380	1.7A	3
AHU-4	(3.3)	1474	150	20	1/2	208/1	32.9	48.0	76.5	64.4	53.3	20.0	5.9	1	208/1	150	1.7A	1.2
AHU-5	(1.4)	484	0	30	1/4	208/1	12.1	14.7	76.9	64.7	53.2	7.7	2.3	1	208/1	88	1.7A	1.2

NOTES:  
1- SINGLE POINT ELECTRICAL CONNECTION FOR AHU AND HEATER  
2- PROVIDE UNIT WITH HEAT PIPE CAPABLE OF 3F OF SUBCOOLING UP STREAM OF COIL  
3- SET OUTSIDE AIR DAMPER FOR O.A. VALUES INDICATED

### CONDENSING UNITS

NO.	AHU SERVED	MCA VOLT	WEIGHT (LBS)	TOTAL CAPACITY MBTUH	SEER	AREA SERVED	NOTES
CU-4	AHU-4	30	209	1	254	11.0	BLDG. 1401
CU-5	AHU-5	11	208	1.1	151	14.7	BLDG. 1401

NOTES:  
1- FASTEN TO CONCRETE PAD WITH #10 CAP SCREW, 3/4" LG. AHEAD EXPANSION ANCHOR  
2- COMPRESSOR SHALL BE SPRING MOUNTED.

### EXHAUST FAN SCHEDULE

SYMBOL	LOCATION	AREA SERVED	CFM	S.P. IN./H2O	POWER DIRECT	WATT DIRECT	M/A	NOTES
EF-1	CEILING BLDG. 3002	77	0.0072	120V	DIRECT	80	2.7	1.7
EF-2	SIOWALL BLDG. 1001	314	0.04	120V	DIRECT	132	6.0	5.7
EF-3	SIOWALL BLDG. 1401	457	0.04	120V	DIRECT	132	6.0	NOT USED
EF-4	SIOWALL BLDG. 3001	180	0.027	120V	DIRECT	132	6.0	1.7
EF-5	SIOWALL BLDG. 3001	240	0.00	120V	DIRECT			2.3, 4.6
EF-6	SIOWALL BLDG. 3001	240	0.00	120V	DIRECT			3.5

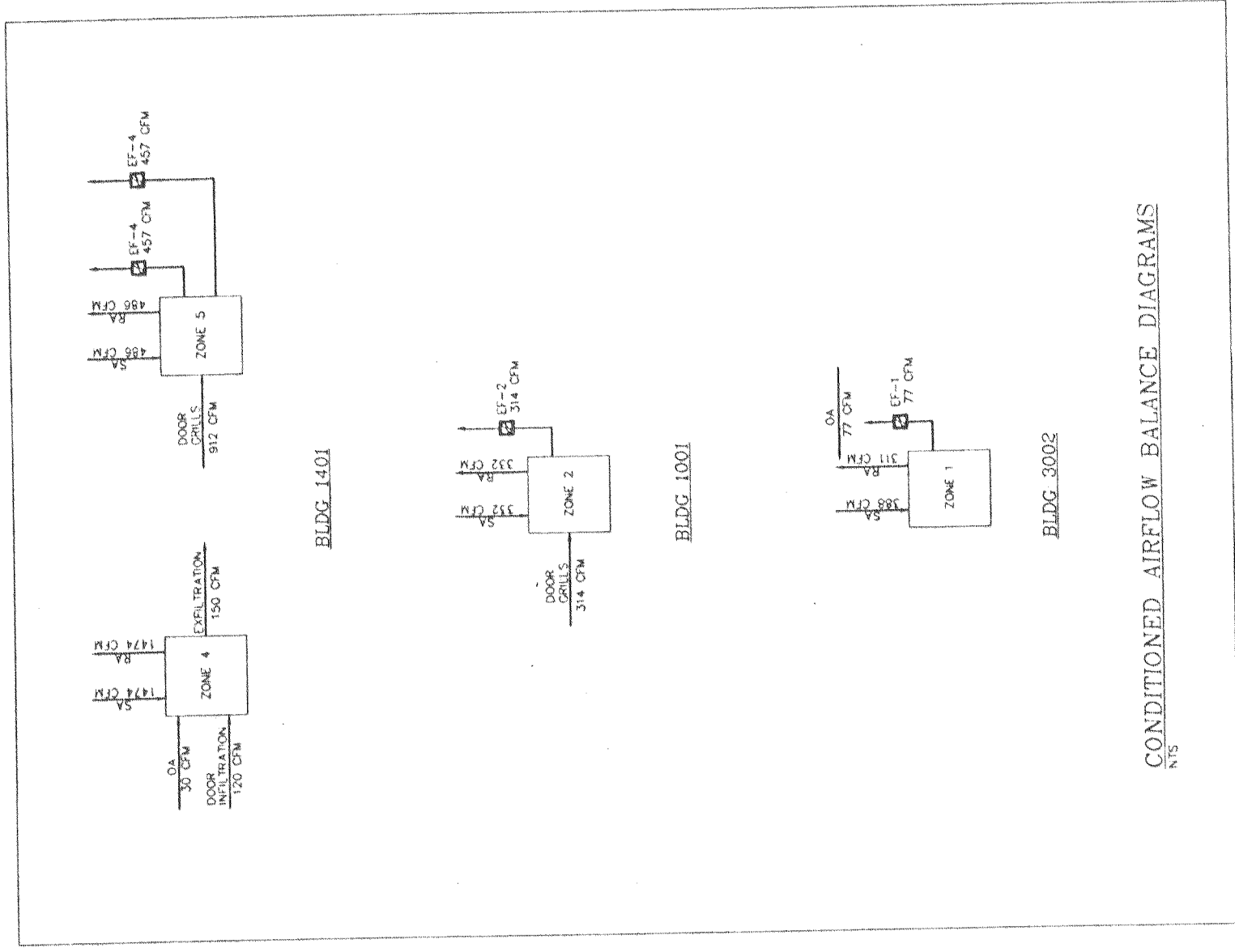
NOTES:  
1- PROVIDE WITH SPEED CONTROL SWITCH MOUNTED FLUSH WITH CEILING NEAR FAN BY ELECTRICAL CONTRACTOR  
2- PROVIDE SLOPED ROOF CURB FOR FAN  
3- ELICIT TO ABOVE FLOOR WITH 8" RO DUCT & BACKDRAFT DAMPER  
4- PROVIDE WITH SPEED CONTROL SWITCH MOUNTED IN WEATHER PROOF ENCLOSURE ON OUTSIDE WALL NEXT TO FAN  
5- PROVIDE WITH SPEED CONTROL SWITCH MOUNTED IN EXPLOSION PROOF ENCLOSURE BY ELECTRICAL CONTRACTOR  
6- PROVIDE WITH SPEED CONTROL SWITCH MOUNTED IN EXPLOSION PROOF ENCLOSURE BY ELECTRICAL CONTRACTOR  
7- SEE SHEET E5.

### SUPPLY AIR DEVICES SCHEDULE

SYST DEV	TYPE	SIZE	CFM	AIR PATTERN	TOTAL PRESSURE	NOTES
SA1	SIOWALL	18X12	737	45'	.09	
SA2	CEILING	6X6	81	1W	.06	

### RETURN EXHAUST OUTSIDE AIR DEVICES SCHEDULE

SYST DEV	TYPE	SIZE	CFM	TOTAL PRESSURE	NOTES
RE1	DOOR GRILL	24X10	314	04	FRAME ON BOTH SIDES OF DOOR
RE2	WALL GRILL	36X14	1324	06	
RE3	LOUVER	12X12	30		4X4 TRANSITION COLLAR & INSECT SCREEN
RE4	WALL GRILL	12X8	243	06	
RE5	DOOR GRILL	20X16	456	04	FRAME ON BOTH SIDES OF DOOR
RE6	RETURN AIR	30X36	3855	04	FILTER GRILL
RE7	WALL LOUVER	12X12	180	06	INSECT SCREEN
RE8	WALL LOUVER	12X12	240	10	INSECT SCREEN



100% CONSTRUCTION DOCUMENTS

Date	17 JULY 98
Project No.	971005
Drawings No.	H-3
Drawn	KTH
Checked	ROC
Building Number	
Location	FLORIDA NATIONAL CEMETERY BUSHNELL, FLORIDA

Project Title  
**PHASE III - BURIAL AREAS AND CEMETERY IMPROVEMENTS**

Drawing Title  
**MAINTENANCE BUILDINGS AND CEMETERY IMPROVEMENTS**

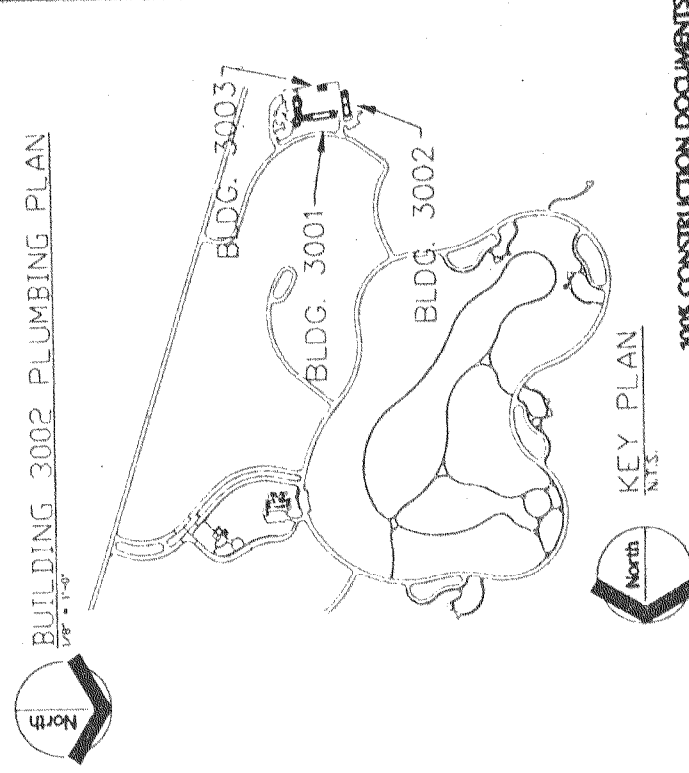
1/8" MECHANICAL PLANS

Approved: *Michael DeWitt*  
Michael DeWitt, Project Director  
Approved: *Michael DeWitt*  
Michael DeWitt, Mechanical Support Services Director

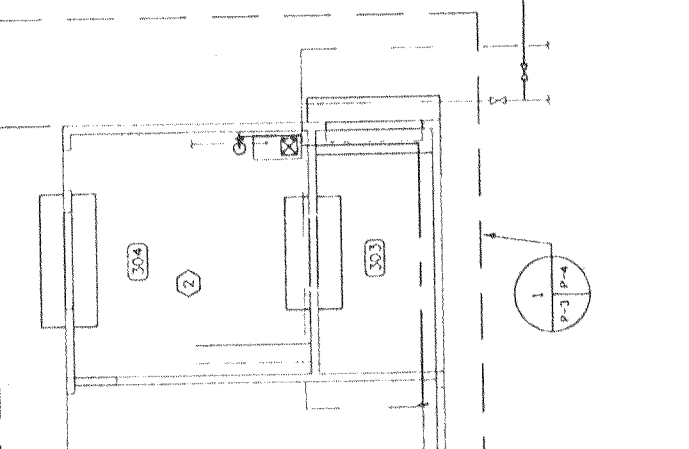
**EDSA**  
Edward D. Stone, Jr. and Associates  
Mechanical and Electrical Engineers  
225 E. University Avenue  
Fort Lauderdale, FL 33301  
Tel: (954) 524-1724  
Fax: (954) 524-1724

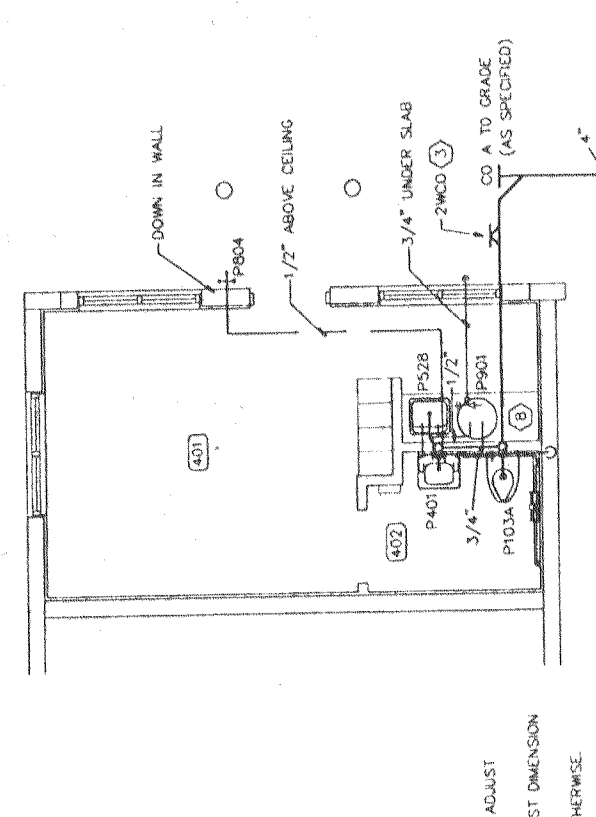
**R. O. COVINGTON & ASSOCIATES**  
CONSULTING ENGINEERS  
225 E. University Avenue  
Fort Lauderdale, FL 33301  
Tel: (954) 524-1724  
Fax: (954) 524-1724



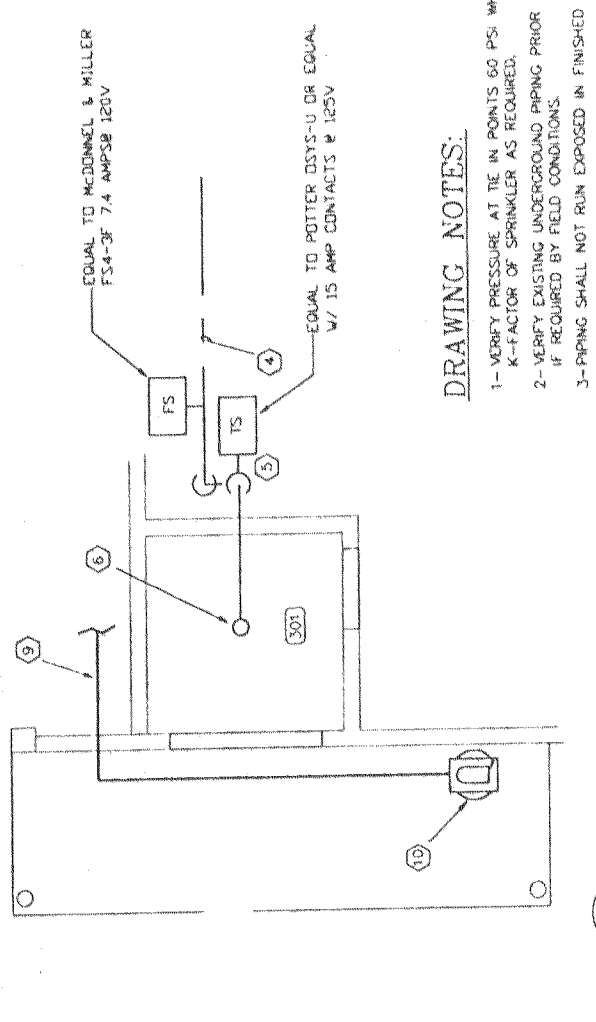


KEY PLAN  
 N.T.S.

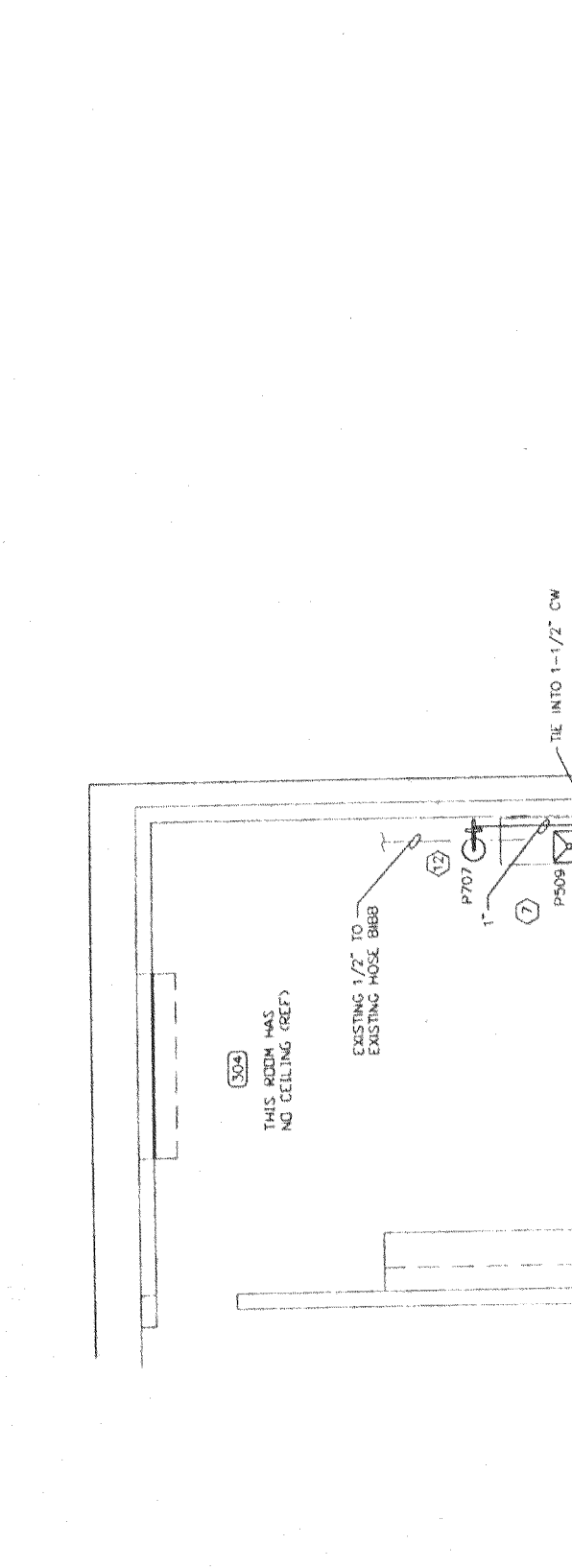




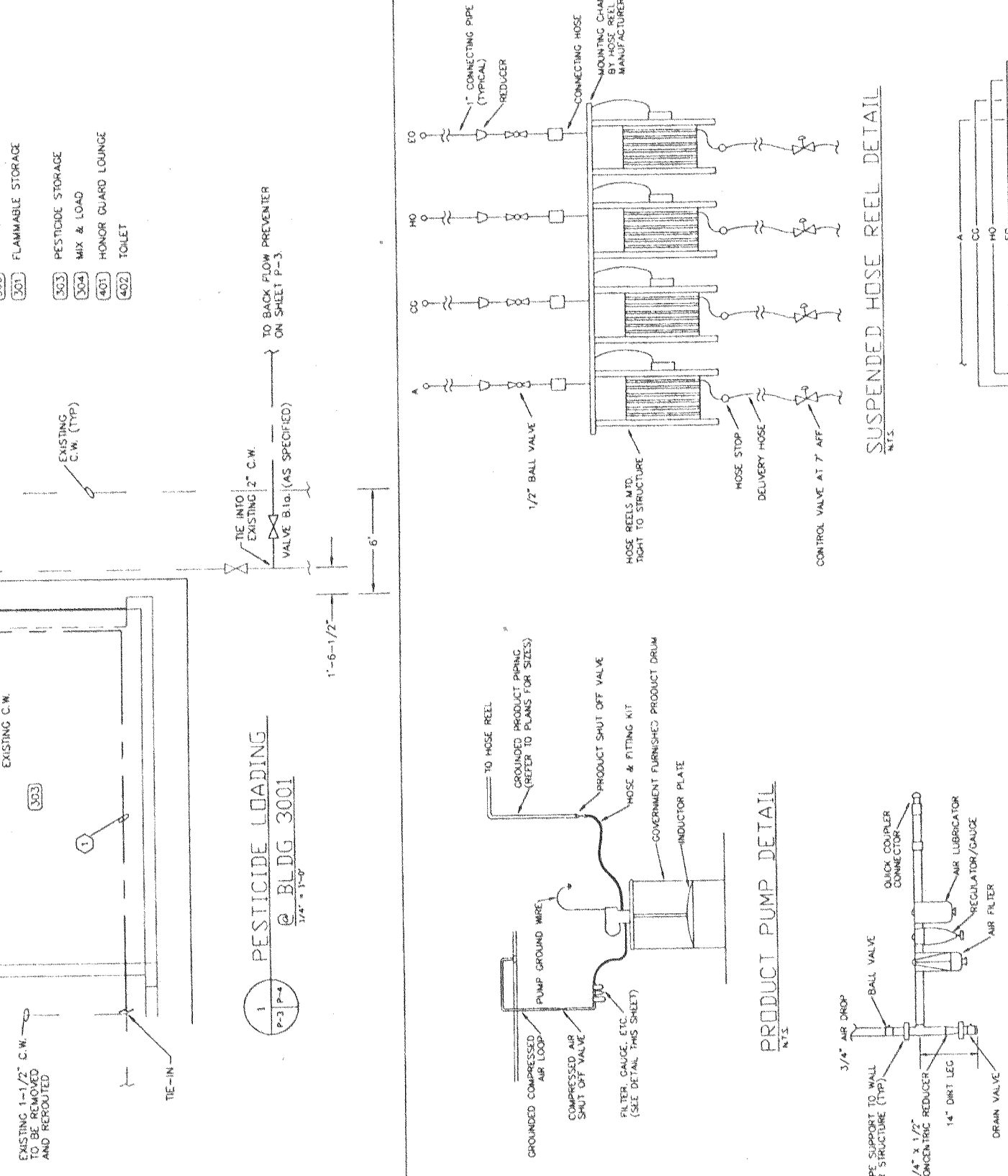
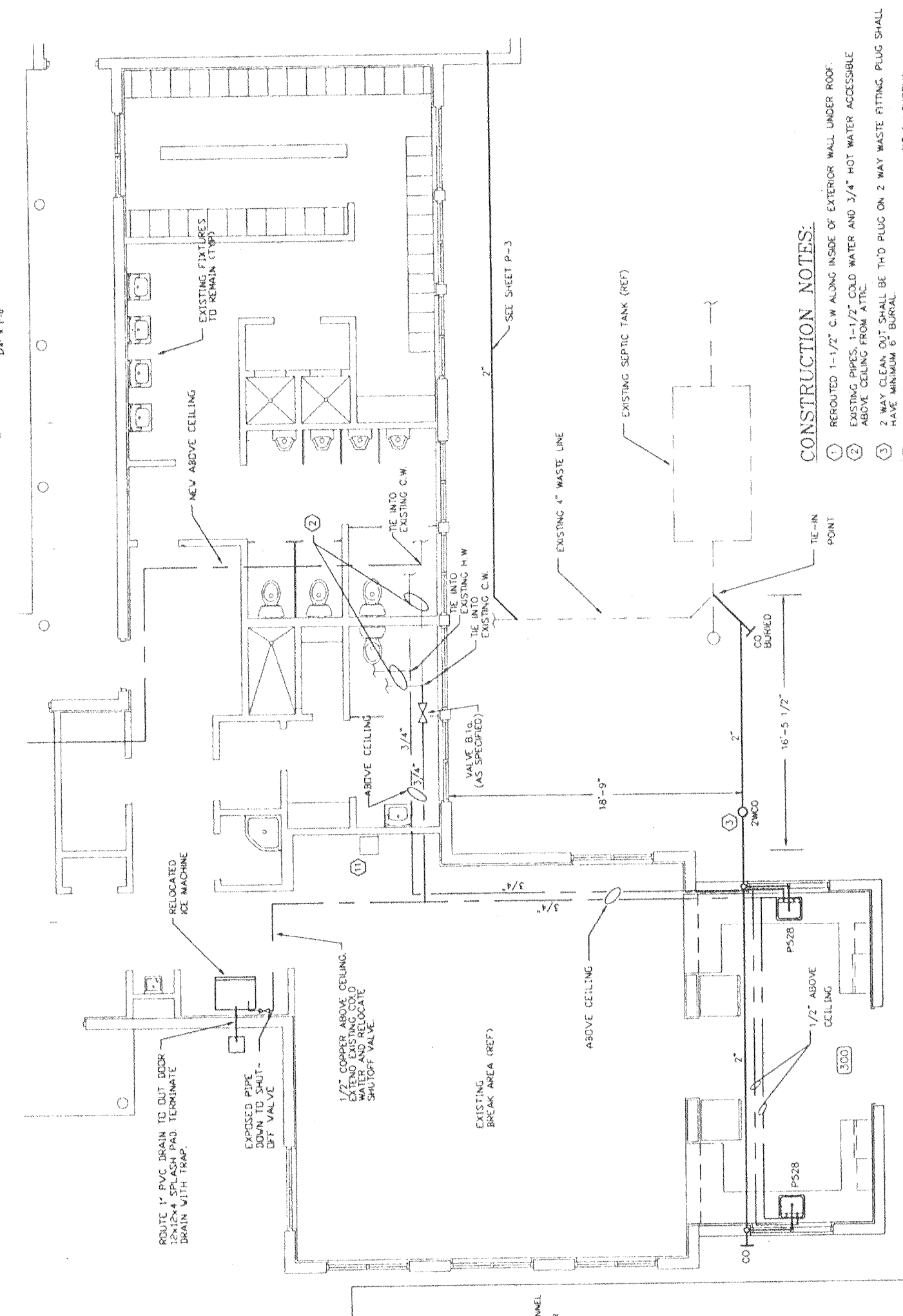
4 HONOR GUARD LOUNGE @ BLDG. 3002  
1/4" x 1'-0"



2 FLAMMABLE STORAGE @ BLDG. 3001  
1/4" x 1'-0"



1 PESTICIDE LOADING @ BLDG. 3001  
1/4" x 1'-0"



**DRAWING NOTES:**  
 1-VERIFY PRESSURE AT TIE IN POINTS 60 PSI WHEN FLOWING RED'D GPM. ADJUST K-FACTOR OF SPRINKLER AS REQUIRED.  
 2-VERIFY EXISTING UNDERGROUND PIPING PRIOR TO CONSTRUCTION. ADJUST DIMENSION IF REQUIRED BY FIELD CONDITIONS.  
 3-PIPING SHALL NOT RUN EXPOSED IN FINISHED AREAS UNLESS NOTED OTHERWISE.  
 4-SEE SPEC 15319 FOR AIR PIPING REQUIREMENTS.  
 5-EXISTING ATIC PIPING PER ASBUILT DRAWINGS EXTEND AS REQUIRED.

**CONSTRUCTION NOTES:**  
 1-ROUTED 1-1/2" C.W. ALONG INSIDE OF EXTERIOR WALL UNDER ROOF.  
 2-EXISTING PIPES, 1-1/2" COLD WATER AND 3/4" HOT WATER ACCESSIBLE ABOVE CEILING FROM ATIC.  
 3-2 WAY CLEAN OUT SHALL BE TIED TO PLUG ON 2 WAY WASTE FITTING PLUG SHALL HAVE MINIMUM 6" BURIAL.  
 4-1-1/2" OVERHEAD CS FIRE LINE FROM EXISTING 1-1/2" CW SUPPLY.  
 5-DROP PIPE WITH SHUT OFF VALVE & TAMPER SWITCH WITH LOCK AND CHAIN.  
 6-20 GPM UPRIGHT FIRE SPRINKLER W/ KS ON 1" PIPE, 165°F LINK.  
 7-PROVIDE 4" LONG TAIL PIPE UNDER SINK, AND 5 GALLON PLASTIC BUCKET.  
 8-WALL CARRIER UNDER COUNTER, IN CABINET WITH OFF SET TO RUN IN WALL UP THRU ROOF. NO COUPLINGS IN WALL.  
 9-EXTEND EXISTING PIPE FROM PRESS. COMPRESSOR LOCATION, UP TO 9 FT. AFTER WHICH INSTALL 1/2" AIR COMPRESSOR UNIT AND DOWN TO FLEXIBLE PIPE. SHUT OFF VALVE AND TRAP.  
 10-SHUT OFF VALVE AND TRAP TO AIR COMPRESSOR, ALONG WITH FLEXIBLE PIPE.  
 11-REMOVE EXISTING SINK, PER DEMOLITION DRAWINGS AND CAP WASTE AND SUPPLY PIPING BEHIND WALL.  
 12-EYEWASH TO BE FED WITH 1" PIPE, NO SHUT OFF VALVE.

**ROOM SCHEDULE**

300	KITCHEN
301	FLAMMABLE STORAGE
302	PESTICIDE STORAGE
303	MIX & LOAD
401	HONOR GUARD LOUNGE
402	TOILET

**100% CONSTRUCTION DOCUMENTS**

Date	7 JULY 98
Project No.	911-005
Drawing No.	P-4
Project Title	PHASE III : BURIAL AREAS AND CEMETERY IMPROVEMENTS
Building Number	3001 & 3002
Drawn	KTH
Checked	ROC
Location	FLORIDA NATIONAL CEMETERY, BUSHNELL, FLORIDA

**EDSA**  
 Edward D. Stone, Jr. and Associates  
 552 E. Howard Boulevard, Suite 710  
 Fort Lauderdale, FL 33301  
 Phone: (954) 552-1000  
 Fax: (954) 552-1001

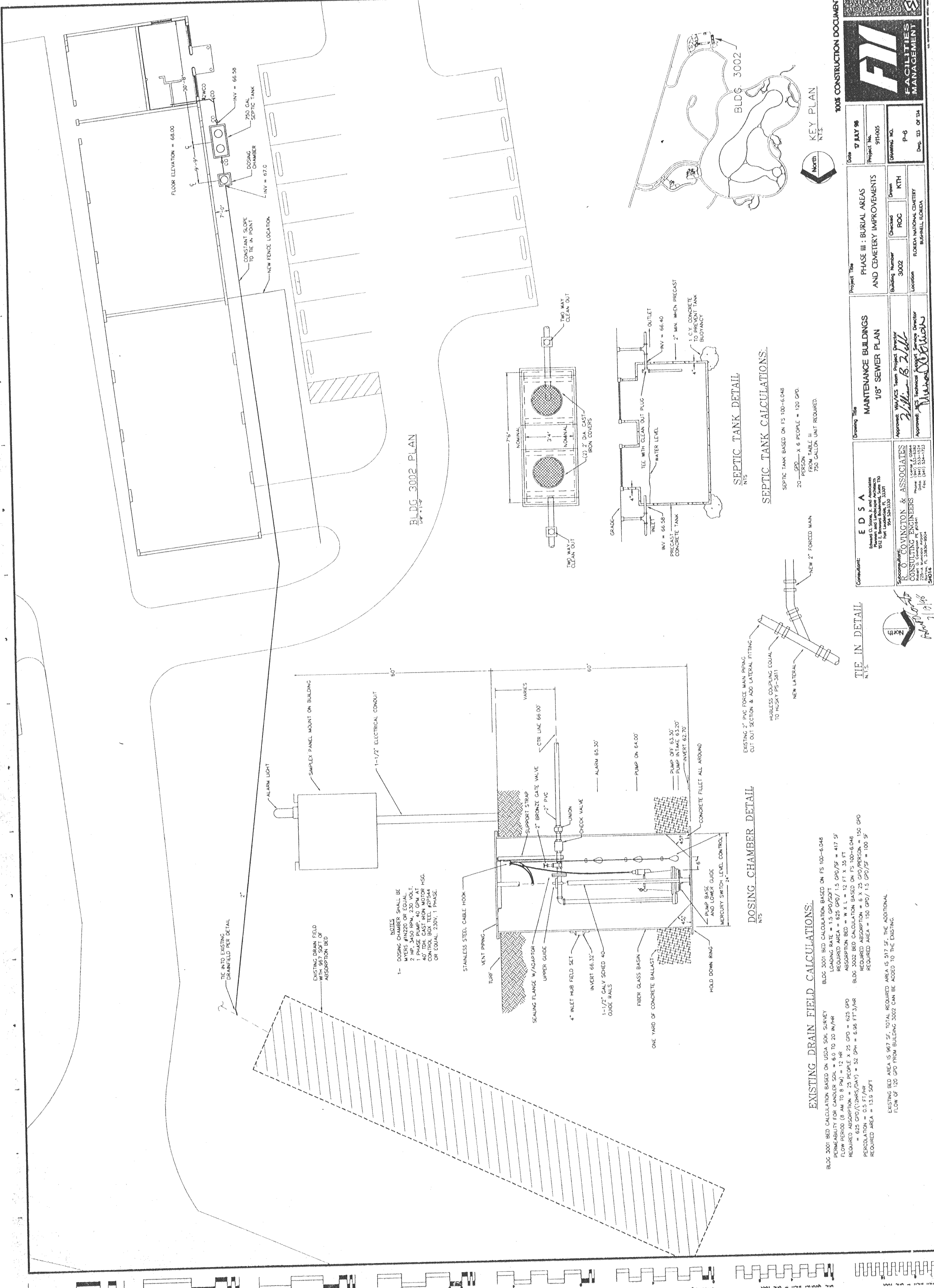
**COVINGTON & ASSOCIATES**  
 CONSULTING ENGINEERS  
 225 S. University Ave., Suite 200  
 Fort Lauderdale, FL 33301  
 Phone: (954) 552-1000  
 Fax: (954) 552-1001

**Revisions**

1	1/15/98	ASBUILT CORRECTIONS
---	---------	---------------------







Date	7 JULY 96
Project No.	91-005
Drawing No.	P-6
Dep. of	23 of 34

Project Title	PHASE III: BURIAL AREAS AND CEMETERY IMPROVEMENTS
Building Number	3002
Checked	ROC
Drawn	KTH
Location	FLORIDA NATIONAL CEMETERY, BUSHNELL, FLORIDA

Drawing Title	MAINTENANCE BUILDINGS 1/8" SEWER PLAN
Approved	WMA/CS Team Project Director <i>William B. Zell</i>
Approved	Technical Services Director <i>Michael Owens</i>

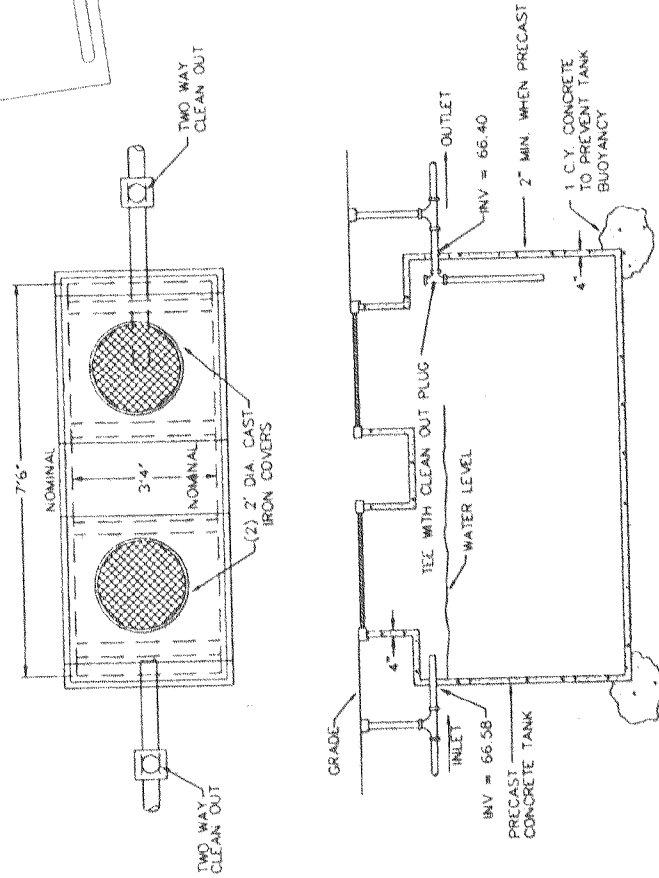
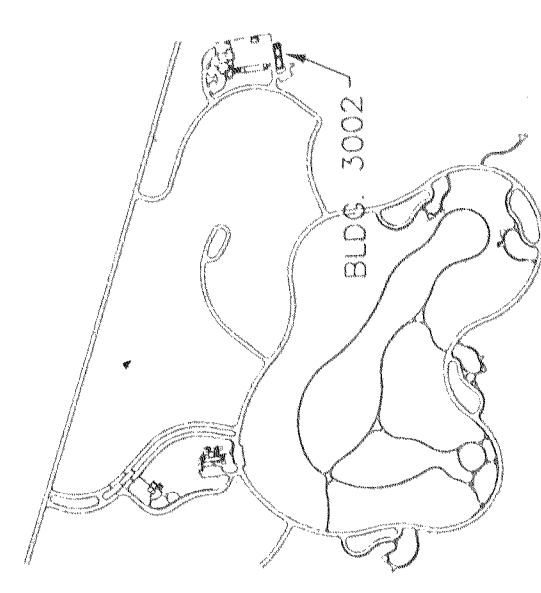
Consultant	<b>E D S A</b> Edward D. Smith & Associates 812 E. Broadway, Suite 110 Fort Lauderdale, FL 33301
Architect	<b>R. O. COVINGTON &amp; ASSOCIATES</b> Consulting Engineers 1000 N. W. 10th St., Suite 100 Fort Lauderdale, FL 33304

Scale	1/8" = 1'-0"
Notes	SEE DRAWING 91-005 FOR EXISTING SEWER PLAN

Project Title	PHASE III: BURIAL AREAS AND CEMETERY IMPROVEMENTS
Building Number	3002
Checked	ROC
Drawn	KTH
Location	FLORIDA NATIONAL CEMETERY, BUSHNELL, FLORIDA

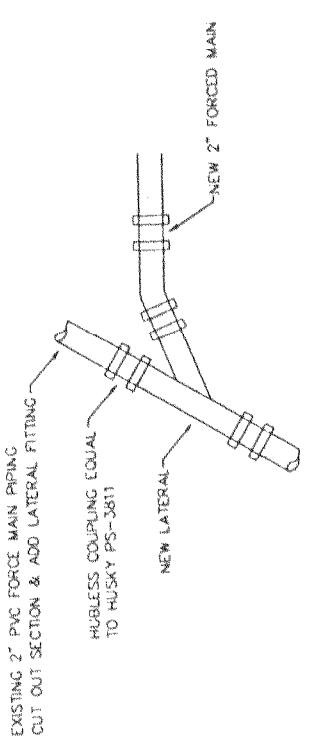
Project Title	PHASE III: BURIAL AREAS AND CEMETERY IMPROVEMENTS
Building Number	3002
Checked	ROC
Drawn	KTH
Location	FLORIDA NATIONAL CEMETERY, BUSHNELL, FLORIDA

Project Title	PHASE III: BURIAL AREAS AND CEMETERY IMPROVEMENTS
Building Number	3002
Checked	ROC
Drawn	KTH
Location	FLORIDA NATIONAL CEMETERY, BUSHNELL, FLORIDA



SEPTIC TANK DETAIL  
NTS

SEPTIC TANK CALCULATIONS:  
SEPTIC TANK BASED ON FS 100-6.048  
20 PERSONS X 6 PEOPLE = 120 GPD.  
TABLE III  
750 GALLON UNIT REQUIRED.



TIE IN DETAIL  
NTS

DOSING CHAMBER DETAIL  
NTS

- NOTES
- DOSING CHAMBER SHALL BE 2" HP, 3450 RPM, 230V AC, 1/2 HP, 1/2" GALV. SHEET METAL, 40" DIA. CAST IRON MOTOR HSC. CONTROL BOX TEL #27544 OR EQUAL 230V, 1 PHASE.

EXISTING DRAIN FIELD CALCULATIONS:

BLDG 3001 BED CALCULATION BASED ON USIA SOIL SURVEY  
PERMEABILITY FOR CANDLER SOIL = 6.0 TO 20 IN/HR  
LOADING RATE = 1.5 GPD/SQFT  
REQUIRED AREA = 625 GPD / 1.5 GPD/SQFT = 417 SF  
FLOW PERIOD (8 AM TO 8 PM) = 12 HR  
REQUIRED ABSORPTION = 23 PEOPLE X 25 GPD = 575 GPD  
PERCOLATION = 0.5 FT/HR  
REQUIRED AREA = 1150 GPD / 0.5 FT/HR = 2300 SF

BLDG 3002 BED CALCULATION BASED ON FS 100-6.048  
PERMEABILITY FOR CANDLER SOIL = 6.0 TO 20 IN/HR  
LOADING RATE = 1.5 GPD/SQFT  
REQUIRED AREA = 625 GPD / 1.5 GPD/SQFT = 417 SF  
FLOW PERIOD (8 AM TO 8 PM) = 12 HR  
REQUIRED ABSORPTION = 23 PEOPLE X 25 GPD = 575 GPD  
PERCOLATION = 0.5 FT/HR  
REQUIRED AREA = 1150 GPD / 0.5 FT/HR = 2300 SF

EXISTING BED AREA IS 967 SF. TOTAL REQUIRED AREA IS 517 SF. THE ADDITIONAL FLOW OF 120 GPD FROM BUILDING 3002 CAN BE ADDED TO THE EXISTING.