

BUILDING 2 1st FLOOR
1/16" = 1'-0"

BUILDING 2 WINDOW REPLACEMENT GENERAL NOTES

WINDOW SYMBOLS ON THE FLOOR PLAN ARE KEYED TO THE TYPICAL SECTIONS. CONTRACTOR SHALL VERIFY ALL WINDOW DIMENSIONS AND QUANTITIES. DS DESIGNATION IS FOR WINDOWS EQUIPPED WITH DETENTION SCREENS.

SEE THE DETAIL AT RIGHT FOR WINDOW INFORMATION BASED ON EFCO SERIES 450 TRIPLE GLAZED INSWING CASEMENT WINDOWS.

ROOM FINISHES VARY. WINDOW CONTRACTOR SHALL BE RESPONSIBLE FOR VERIFICATION OF ALL ROOM FINISHES AND REPAIR OF ALL SURFACES RESULTING FROM THE REPLACEMENT OPERATIONS. A SITE SURVEY WILL BE CONDUCTED AT THE BEGINNING OF THIS CONTRACT TO DOCUMENT EXISTING CONDITIONS. COR SHALL BE NOTIFIED OF ANY CONDITION CHANGES AFTER THE SITE SURVEY.

ANY DEBRIS INSIDE ROOMS, ON THE GROUNDS, SIDEWALKS, ETC., SHALL BE REMOVED AT THE END OF EACH DAY. COORDINATE WITH COTR FOR POSSIBLE DUMPSTER LOCATION. ALL WORK SHALL BE ACCOMPLISHED DURING NORMAL DUTY HOURS 8 AM TO 4:30 PM OR AS APPROVED BY COR AND CONTRACTING OFFICER.

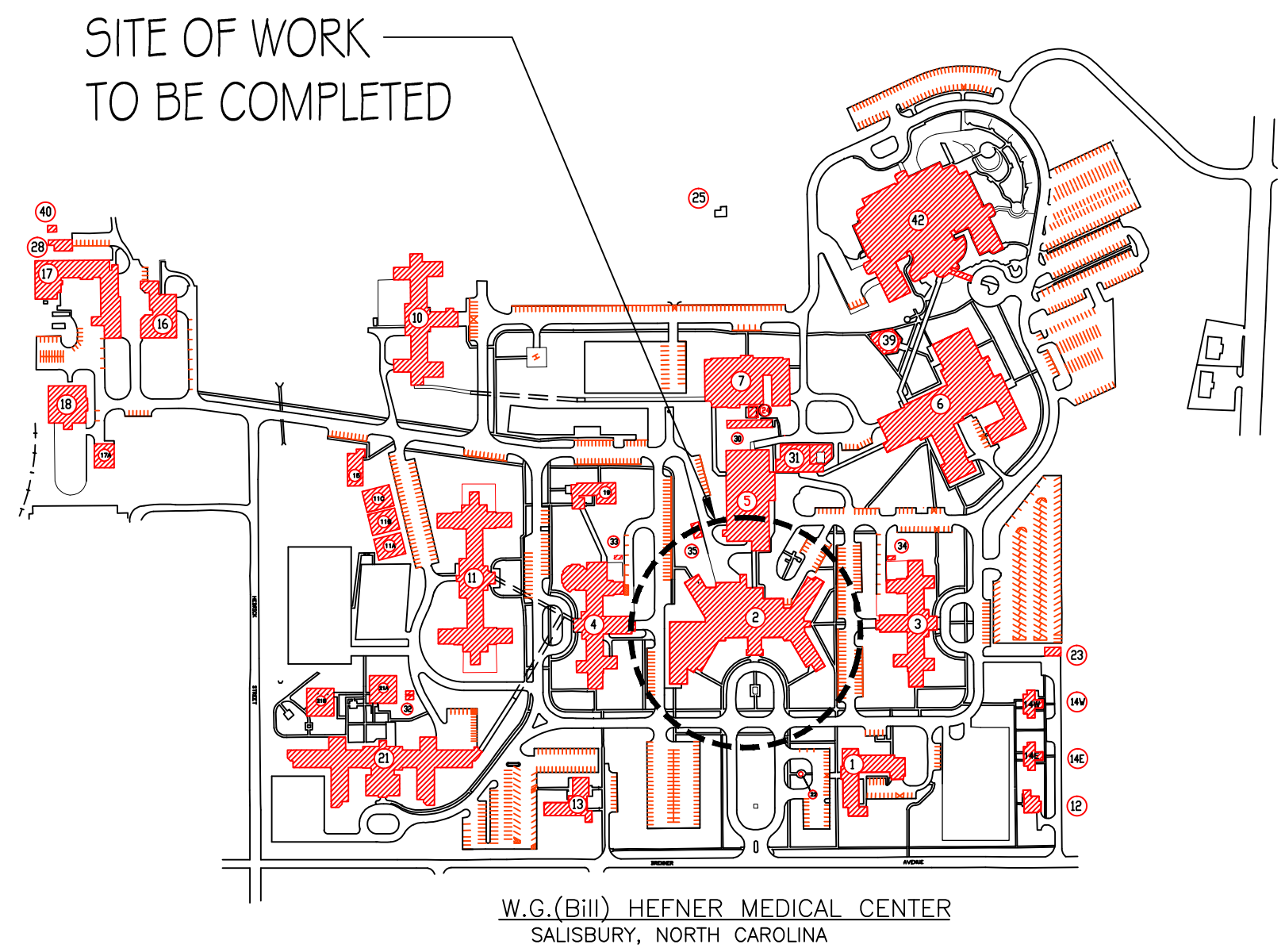
ALL SAFETY REGULATIONS OF THIS STATION SHALL BE OBSERVED.

SAUSBURY VAMC WILL NOT PROVIDE STORAGE FOR WINDOWS OR EQUIPMENT. THE WINDOW CONTRACTOR SHALL PROVIDE TRAILER OR OTHER SUITABLE STORAGE FACILITY FOR WINDOWS. STORAGE TRAILER MAY BE PARKED IN SPACE AVAILABLE BEHIND THE WAREHOUSE OR AS APPROVED BY COTR OR CONTRACTING OFFICER.

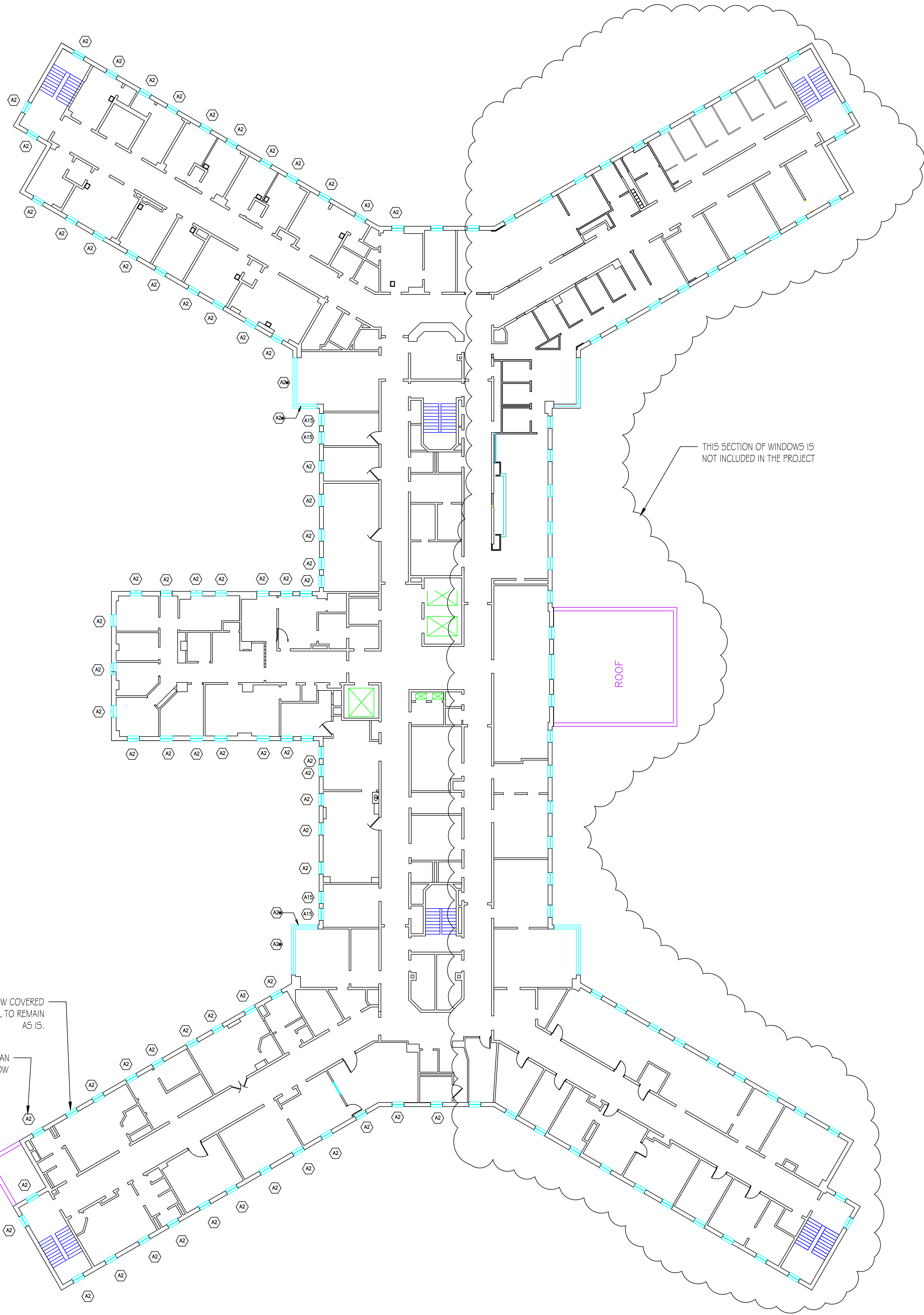
BUILDING 2 IS AN INPATIENT AND OUTPATIENT CARE BUILDING WHICH WILL REQUIRE SCHEDULING THE ACCESS TO MANY SPACES. AFTER THE NOTICE TO PROCEED ON THIS CONTRACT THE CONTRACTOR AND COR SHALL SET A PRELIMINARY SCHEDULE BASED ON THE NUMBER OF WINDOWS THAT CAN SUCCESSFULLY BE REMOVED AND REPLACED IN A NORMAL WORK DAY. NO MORE WINDOWS CAN BE REMOVED THAN CAN BE REPLACED IN A NORMAL WORK DAY. MOST AREAS OF BUILDING 2 ARE OCCUPIED ALL DAY AND ALL NIGHT AND THE CONTRACTOR MUST PROVIDE A CLEAN HAZARD FREE WORK AREA AT EACH WINDOW. PRIOR SCHEDULING OF ACCESS TO EACH WINDOW IS REQUIRED.

CONTRACTOR SHALL BE RESPONSIBLE FOR REMOVING AND REPLACING DRAPES AND FURNITURE IN THE WAY OF ACCESSING EACH WINDOW LOCATION. WINDOW SHADES AND BLINDS SHALL BE REMOVED AND DISPOSED OF. FURNITURE SHALL BE REPLACED AS QUICKLY AS POSSIBLE.

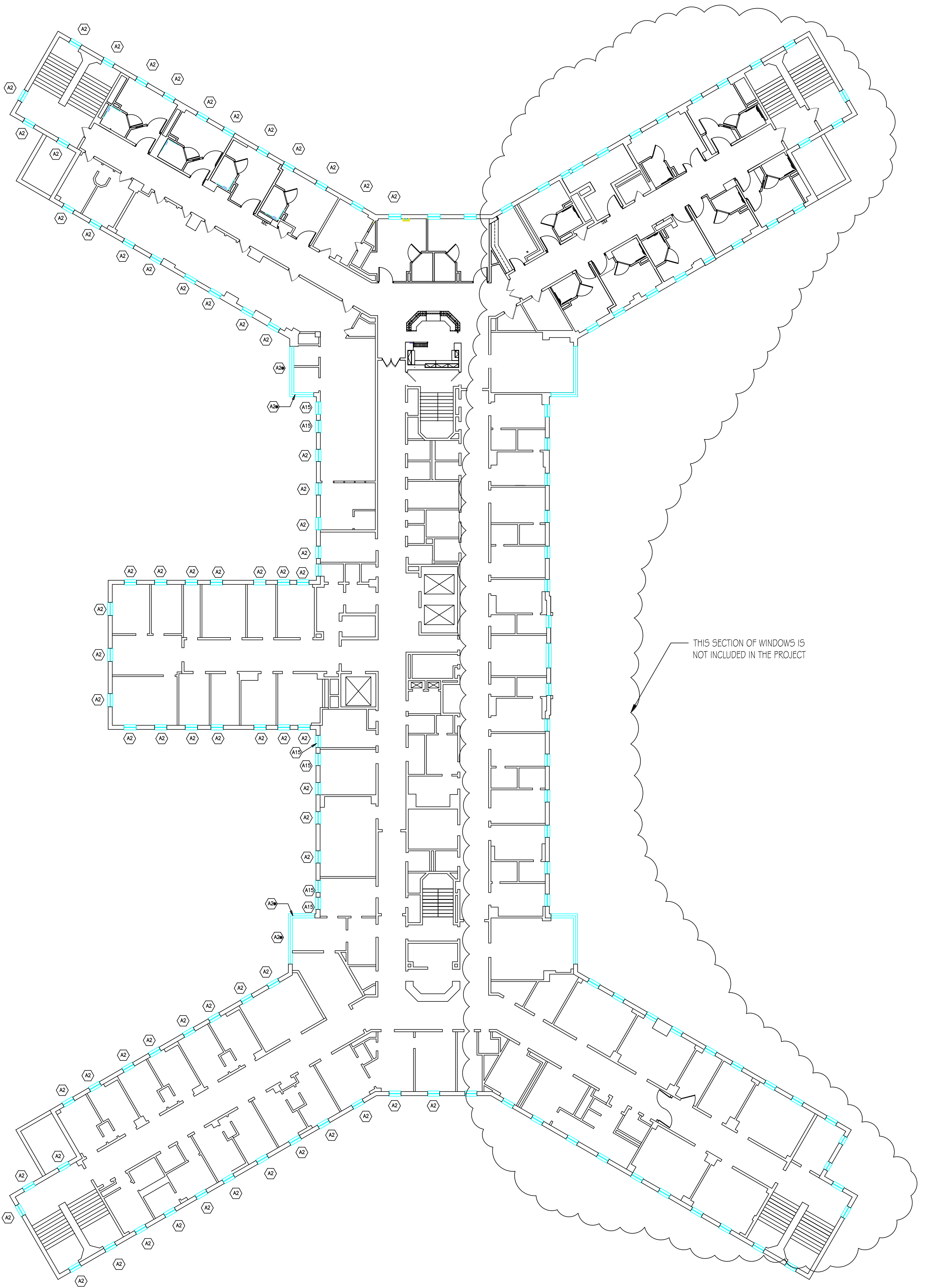
A2 WINDOWS IN ROOMS 1133, 1096, 2089, 2110A, 3082, 3104, 4085, 5053 AND 5070 ARE CORNER WINDOWS WITH TWO WINDOWS SET IN ONE DIRECTION AND 4 WINDOWS AT 90 DEGREES. BOTH SETS OF WINDOWS ARE SET WITH CONNECTING MULLIONS. NEW WINDOWS SHALL BE SET IN A SIMILAR WINDOW CONFIGURATION.



Revision		Date		RECOMMEND APPROVAL				Drawing Title			Project Title			Date			Department of Veterans Affairs
				REQUESTER	Date	CHIEF OF SERVICE	Date	CHIEF OF STAFF	Date	PLANS 1st FLOOR, SITE PLAN AND NOTES			REPLACE BUILDING 2 ORIGINAL WINDOWS				
				ASSOC. DIR. PATIENT CARE SVC.	Date	ASSOC. DIR. for OPERATIONS	Date	Approved: Safety Manager/M&O Supervisor			Building Number	Checked	Drawn	Project No.		DRAWING NO.	
				APPROVAL BY:			Date	Approved:Chief of Facilities Management Svr.			BLDG 2	GLM	659-12-257		1		
				MEDICAL CENTER DIRECTOR				Location			W.G.(Bill) Hefner Medical Center 1601 Brenner Ave. Salisbury NC 28144						



BUILDING 2 2nd FLOOR
1/16" = 1'-0"



BUILDING 2 3rd FLOOR
1/16" = 1'-0"

Revision	Date

RECOMMEND APPROVAL			
REQUESTER	Date	CHIEF OF STAFF	Date
CHIEF OF SERVICE	Date	ASSOC. DIR. for OPERATIONS	Date
ASSOC. DIR. PATIENT CARE SVC.	Date		
APPROVAL BY:			Date
MEDICAL CENTER DIRECTOR			

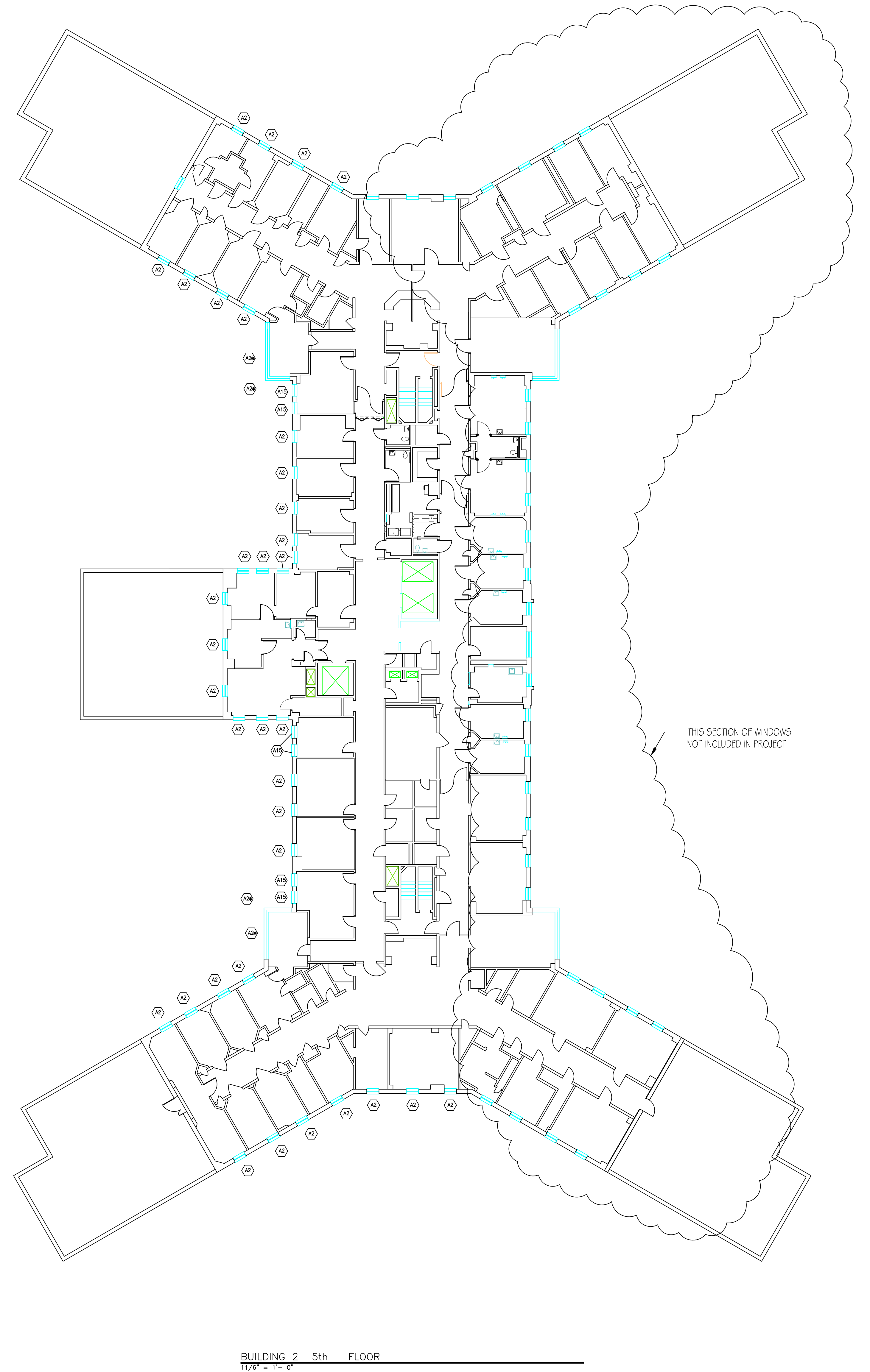
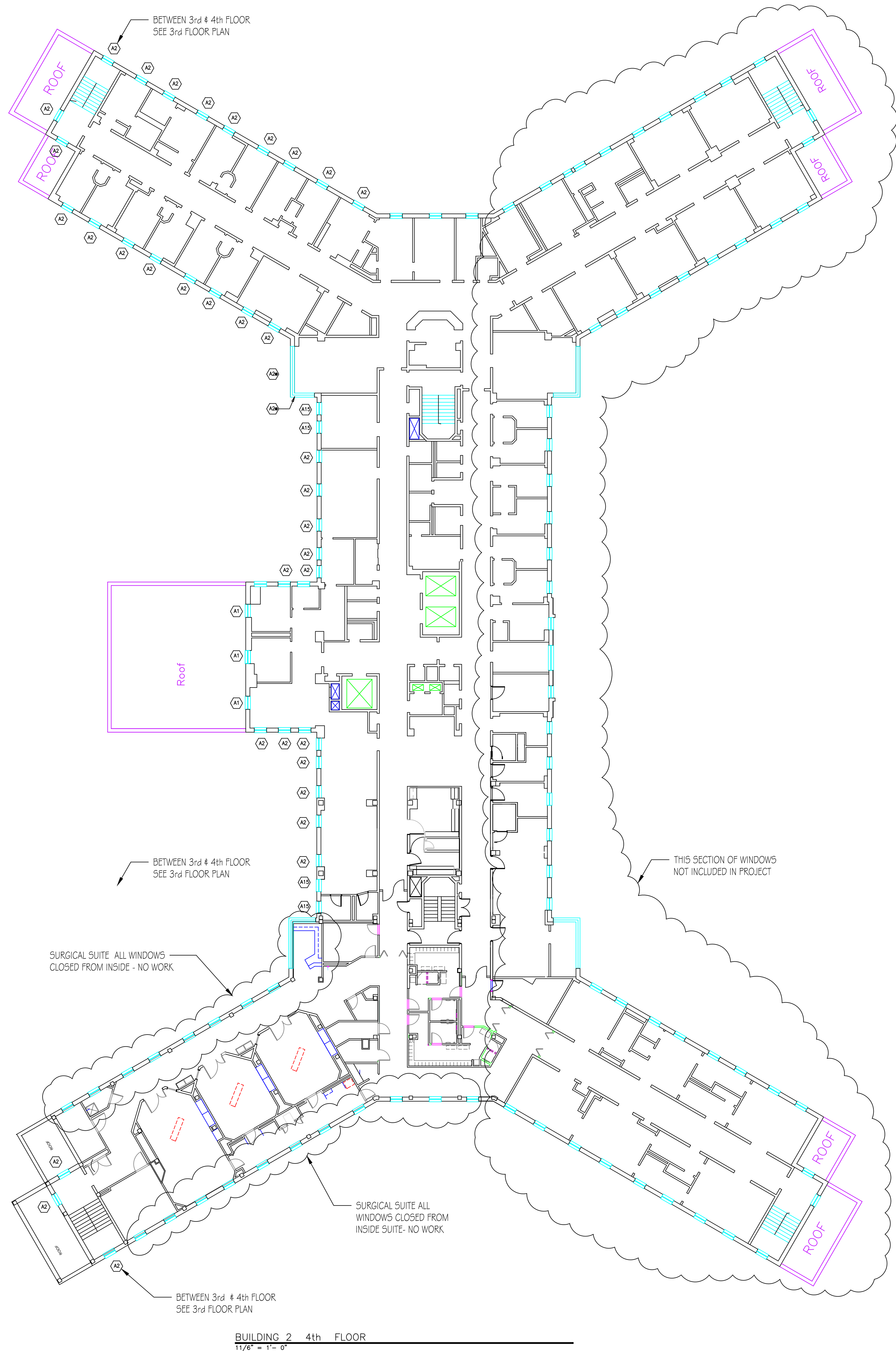
Drawing Title
PLANS FOR B2 FLOORS
2nd AND 3rd
Approved: Safety Manager/M&O Supervisor
Approved:Chief of Facilities Management Svr.

Project Title
REPLACE BUILDING 2
ORIGINAL WINDOWS
Building Number
BLDG 2
Checked
GLM
Location
W.G.(Bill) Hefner Medical Center
1601 Brenner Ave.
Salisbury NC 28144

Date
7-25-2012
Project No.
659-12-257
DRAWING NO.
2
DWG. 2 OF 4



Department of
Veterans Affairs



Revision	Date

RECOMMEND APPROVAL			
REQUESTER	Date	CHIEF OF STAFF	Date
CHIEF OF SERVICE	Date	ASSOC. DIR. for OPERATIONS	Date
ASSOC. DIR. PATIENT CARE SVC.	Date		
APPROVAL BY:			Date
MEDICAL CENTER DIRECTOR			

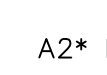
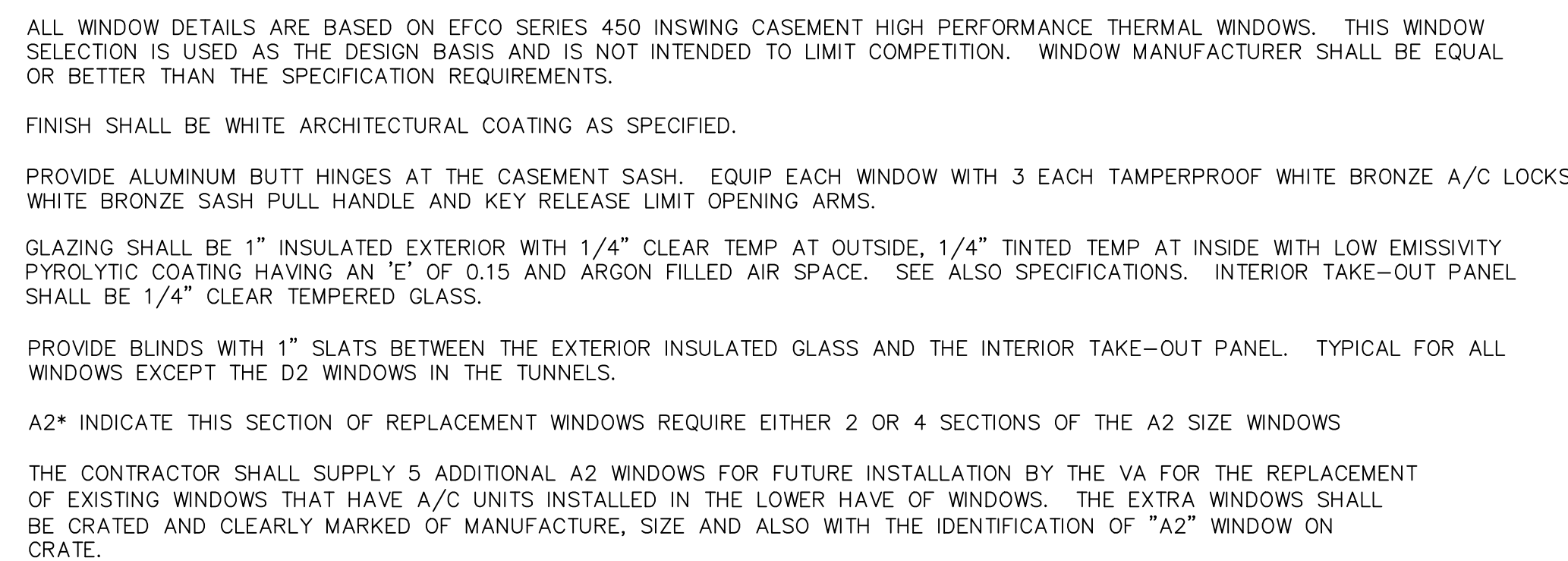
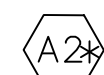
Drawing Title
PLANS FOR B2 FLOORS
4th AND 5th
Approved: Safety Manager/M&O Supervisor
Approved: Chief of Facilities Management Svr.

Project Title
REPLACE BUILDING 2
ORIGINAL WINDOWS
Building Number
BLDG 2
Location
W.G.(Bill) Hefner Medical Center
1601 Brenner Ave.
Salisbury NC 28144

Date
7-25-2012
Project No.
659-12-257
DRAWING NO.
3
DWG. 3 OF 4



Department of
Veterans Affairs



E:\Projects\659-12-257 -Replace Original Windows Building 2\PROJECT FOLDER\Drawings\REPLACE B2 ORIGINAL WINDOWS.dwg, B2 Window Replacement Sheet 4, 7/26/2012 3:52:03 PM