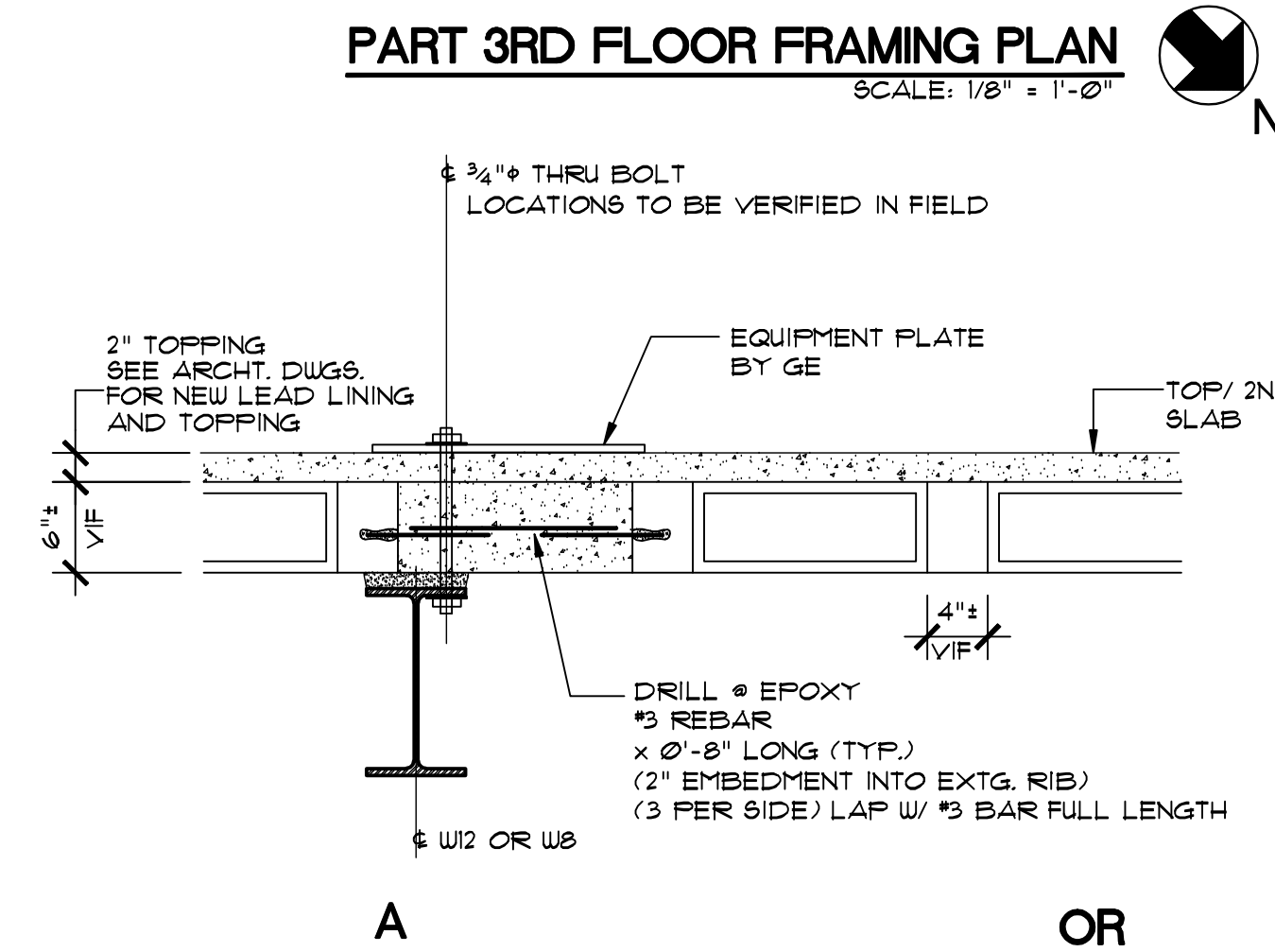
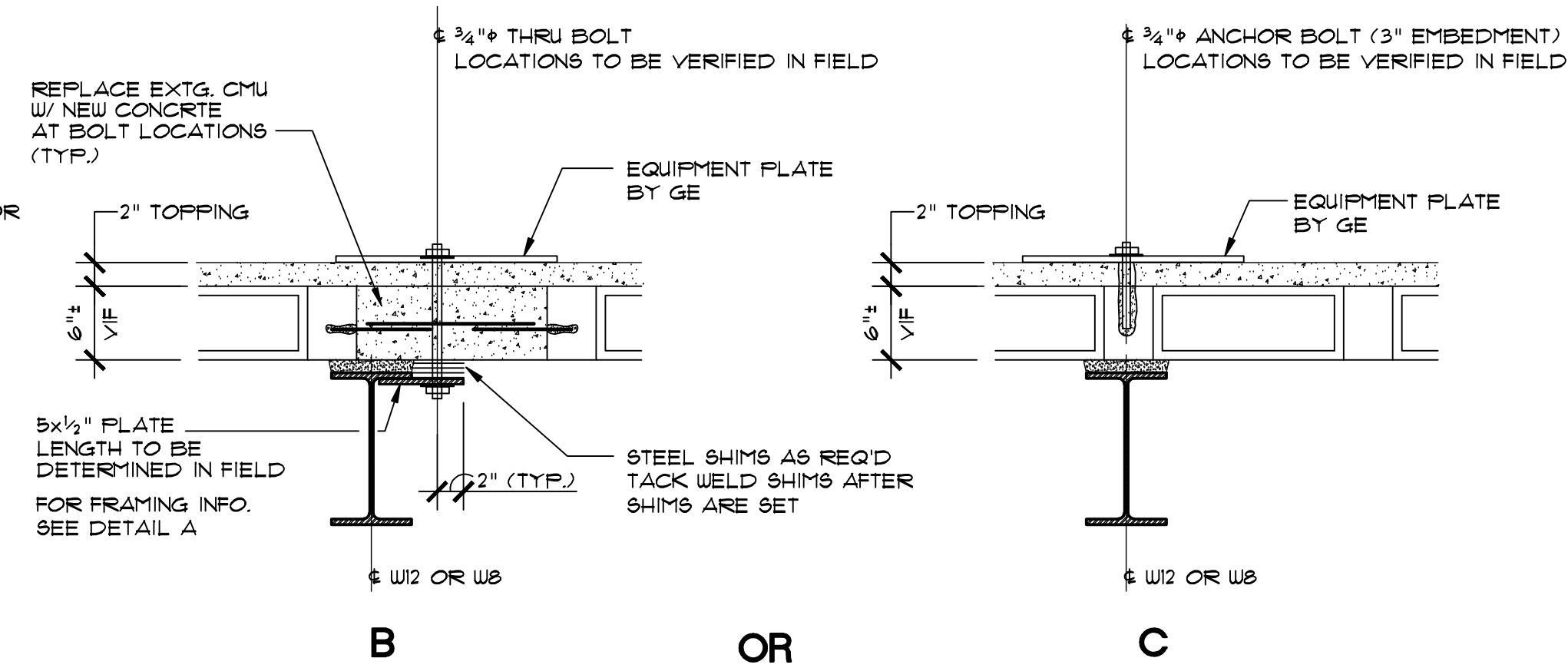


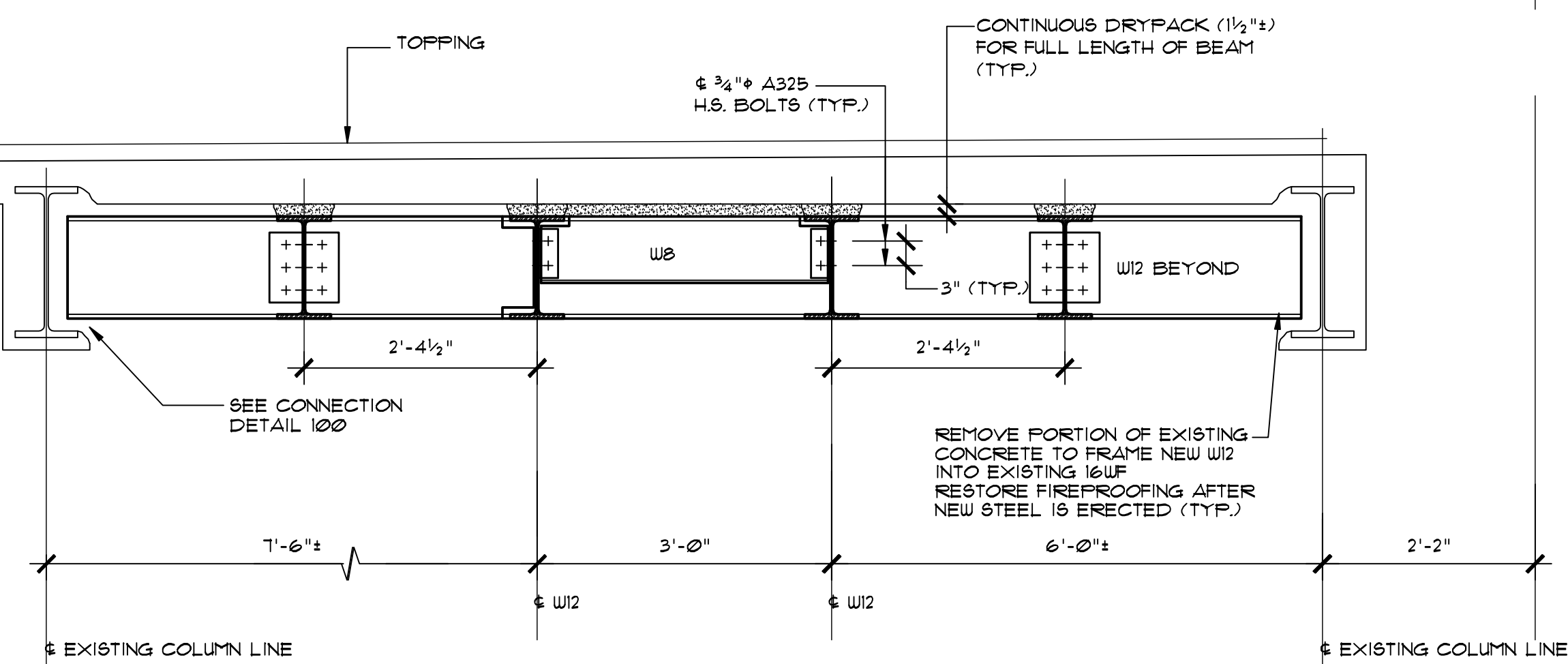
PART 3RD FLOOR FRAMING PLAN
SCALE: 1/4" = 1'-0"



ANCHOR DETAILS
SCALE: 1" = 1'-0"



SECTION A
SCALE: 3/4" = 1'-0"



SECTION B
SCALE: 3/4" = 1'-0"

GENERAL NOTES

MISCELLANEOUS

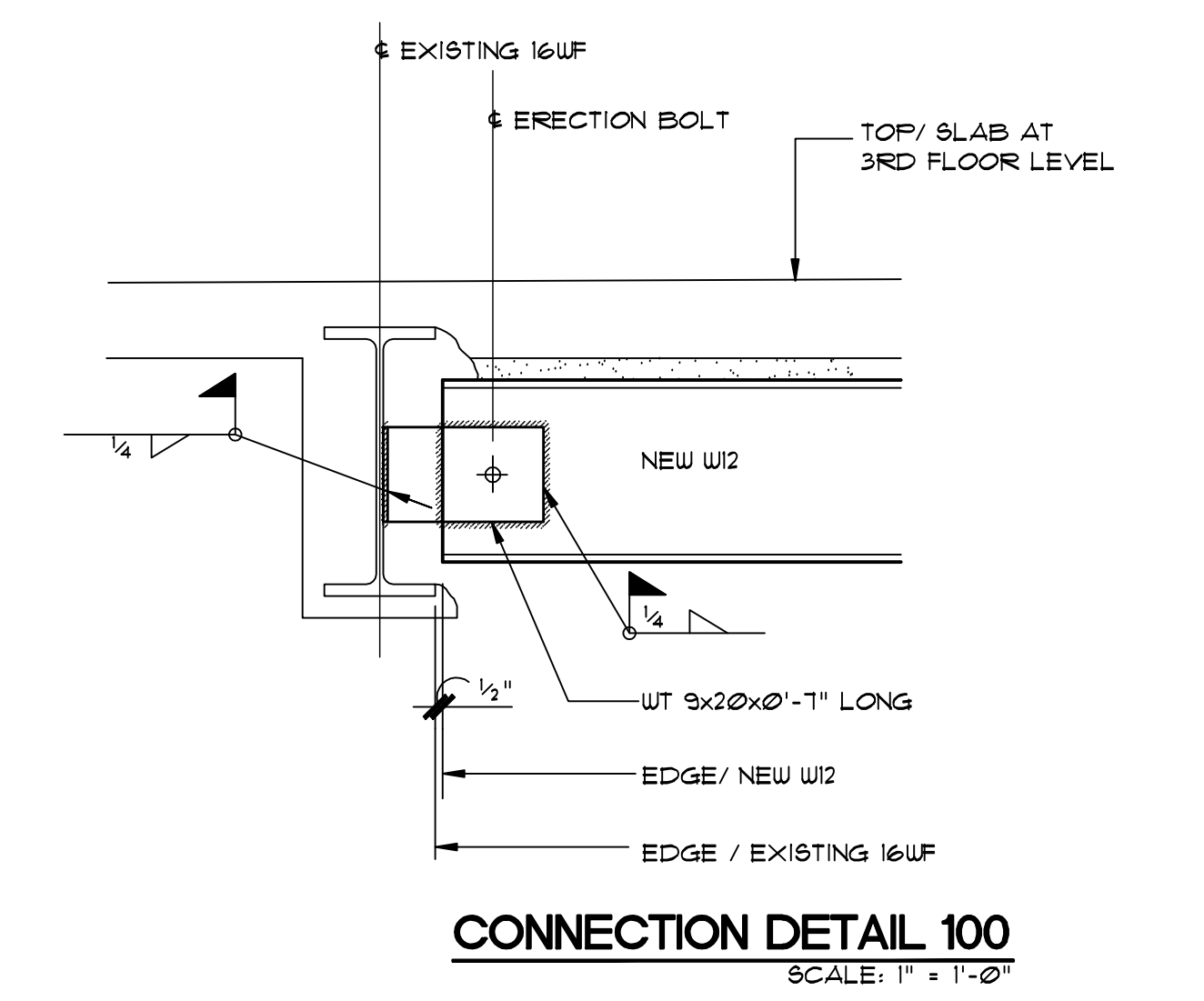
1. CONTRACTOR SHALL VERIFY ALL CONDITIONS IN THE FIELD AND IMMEDIATELY NOTIFY ENGINEER OR ARCHITECT OF ANY CONDITIONS NOT AS ASSUMED. HE SHALL TAKE FIELD MEASUREMENTS AS REQUIRED AND BE RESPONSIBLE FOR SAME.
2. ALL STRUCTURAL WORK SHALL BE COORDINATED WITH ARCHITECTURAL, ELECTRICAL, PLUMBING, ETC. REQUIREMENTS, DISCREPANCIES AND/OR INTERFERENCES SHALL BE REPORTED TO THE ARCHITECT IMMEDIATELY.
3. PERFORM THE WORK OF ALL TRADES IN A COMPLETE, THOROUGH, AND WORKMAN LIKE MANNER IN CONFORMANCE WITH THE ACCEPTED PRACTICES AND ALL REQUIREMENTS OF THE NEW YORK CITY BUILDING CODES.
4. GENERAL CONTRACTOR SHALL BE RESPONSIBLE FOR ADEQUATELY BRACING AND PROTECTING ALL WORK DURING CONSTRUCTION AGAINST DAMAGE, BREAKAGE, COLLAPSE, DISTORTION, AND MISALIGNMENT IN ACCORDANCE WITH GOOD PRACTICE.
5. ENGINEER OF RECORD SHALL NOT BE RESPONSIBLE FOR THE WORK RELATING TO THE CONTRACTOR'S SAFETY PRECAUTIONS OR TO MEANS, METHODS, TECHNIQUES OR PROCEDURES REQUIRED FOR THE CONTRACTOR TO PERFORM HIS WORK.
6. GENERAL CONTRACTOR SHALL BE RESPONSIBLE FOR ALL SAFETY CONDITIONS RELATING TO JOB CONSTRUCTION AND ASSUME PROTECTION RELATED TO ADJACENT OCCUPANCY.
7. CONTRACTOR TO SEE VENDOR SPECIFICATIONS FOR GENERAL INFORMATION. COORDINATE NEW STEEL LOCATIONS W/ VENDOR SPECIFICATIONS OF UNIT.

STRUCTURAL STEEL

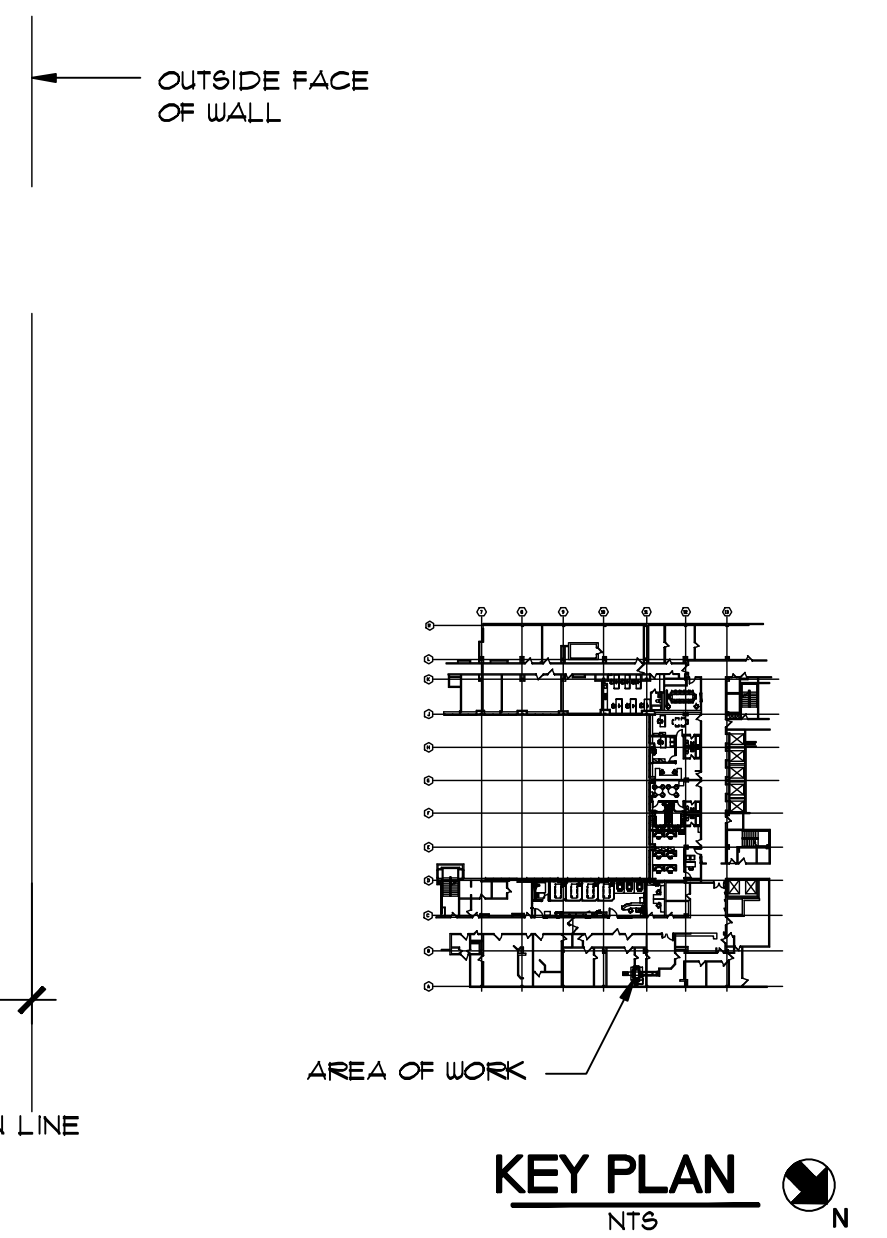
1. ALL STRUCTURAL STEEL SHALL CONFORM TO THE LATEST AISC SPECIFICATION FOR THE DESIGN FABRICATION ERECTION OF STRUCTURAL STEEL BUILDINGS. ALL STEEL BEAMS SHALL BE ASTM A-36 (GRADE 50). ALL ANGLES AND PLATES SHALL BE ASTM A36 STEEL.
2. ALL CONNECTIONS OF NEW STEEL TO EXISTING TO BE WELDED. NO BURNING OR DRILLING INTO EXISTING BEAMS IS PERMITTED. ALL CONNECTION OF NEW STEEL TO NEW STEEL TO BE BOLTED OR WELDED.
3. UNLESS OTHERWISE NOTED, ALL A-325 BOLTS SHALL BE 3/4" DIAMETER. OPEN HOLES TO BE 13/16" DIAMETER.
4. ALL WELDING SHALL BE DONE BY LICENSED WELDERS.
5. FABRICATOR SHALL FURNISH AN AFFIDAVIT FROM THE STEEL PRODUCER CERTIFYING THAT THE STRUCTURAL STEEL MEETS THE PROVISIONS OF THESE GENERAL NOTES.

INSPECTION

- a) STRUCTURAL STEEL WELDING
- b) STRUCTURAL STEEL ERECTION & BOLTING
- c) STRUCTURAL SAFETY-STRUCTURAL STABILITY



CONNECTION DETAIL 100
SCALE: 1" = 1'-0"



KEY PLAN
SCALE: 1" = 1'-0"

CONSULTANTS:

VALERIO ASSOCIATES, P.C.
CONSULTING ENGINEERS
114 OLD COUNTRY ROAD
MINEOLA, NY 11501
(516) 738-1616
(516) 738-1628
FAX

ARCHITECT:

Lothrop associates^{LLP} architects
200 SUMMIT LAKE DRIVE, VALHALLA, NEW YORK 914-741-1115

Drawing Title
**PART 3RD FLOOR FRAMING PLAN, SECTIONS
DETAILS AND GENERAL NOTES**

Approved: Project Director

Project Title
**RADIOLOGY - CT
AT BROOKLYN CAMPUS
NEW YORK HARBOR
HEALTH CARE SYSTEM**

Location
BROOKLYN, NY
U/A PROJECT # **1088-1**
Date
Checked
JOY/PE
Drawn
JL

PROJECT NUMBER
630A4-CSI-103
BUILDING NUMBER
1
Drawing Number
SF-101
Dwg. 1 of 45

**Facilities
Management
Services**

**Department of
Veterans Affairs**

100% SET ISSUE
07-14-2011
100% SET ISSUE
08-13-2011
REVISION
05-20-2011
PROGRESS PRINT
03-29-2011
Revisions
Date