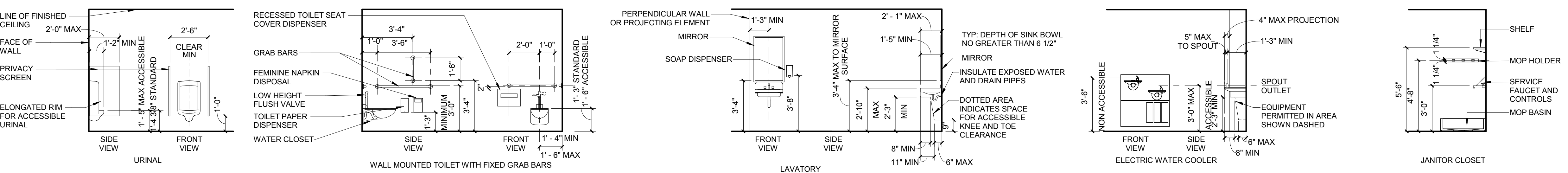


EQUIPMENT AND ACCESSORIES NOTE: ALL DIMENSIONS INCLUDE ALL OPERABLE LEVERS, INCLUDING COIN SLOTS

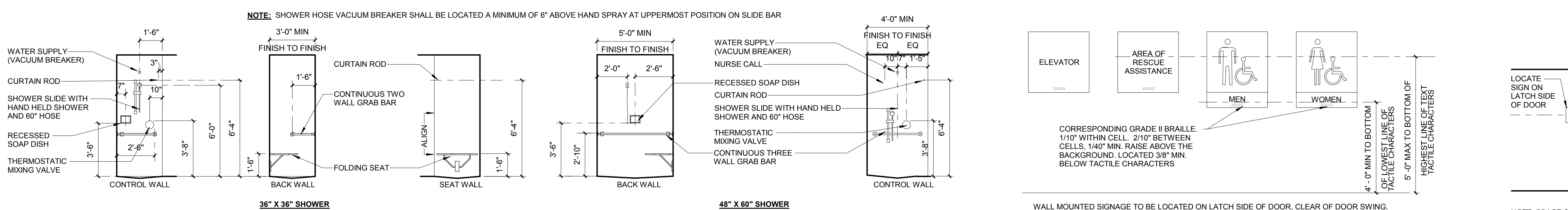
ID	ITEM (SPEC SECTION 102800 UON)
TA-01	088300 - WALL MIRROR - 24W x 48H
TA-02	SHOWER CURTAIN ROD - SWING CLEAR GATE TYPE
TA-02A	CURTAIN ROD, SHOWER
TA-03	ROBE HOOK
TA-04	GRAB BAR, 48"
TA-05	GRAB BAR, 18" (VERTICAL MOUNTING)
TA-06	GRAB BAR, 36"
TA-07	GRAB BAR, 42"
TA-08	GRAB BAR, 18" x 30" L CONTINUOUS
TA-09	GRAB BAR, 18"
TA-10	DISPENSER, TOILET PAPER
TA-11	DISPENSER, FEMININE PRODUCT
TA-12	DISPENSER, SEAT COVER
TA-13	DISPENSER, PAPER TOWEL (BY OWNER)
TA-14	DISPENSER, SOAP (BY OWNER)
TA-15	102800 - SOAP DISH, RECESSED
TA-16	GRAB BAR, FLIP-UP
TA-17	GRAB BAR, 18"
TA-18	SS SHELF
TA-19	088300 - WALL MIRROR - 24W x 72H
TA-20	102800 - SHOWER SEAT - WALL
TA-21	SHOWER SEAT - MOBILE (BY OWNER)

ID	ITEM	Comments
AR-01	FIRE EXTINGUISHER CABINET	
AR-02	PRIVACY CURTAIN & TRACK	
AR-03	MED GAS WALL BOX - RECESSED, 3 GAS, W/ SHIFTABLE WALL ART.	
AR-04	ROLLER SHADE - SINGLE MANUAL	
AR-05	P-TUBE STATION, RE-12A/0880	
AR-06	LOCKER, DOUBLE TIER - ASI STORAGE SOLUTIONS (SKY BLUE)	
AR-07	LOCKER, SINGLE TIER	
AR-08	MOP/BROOM HOLDER, JANITORIAL	
AR-09	CLOCK, WALL (NIC)	
AR-10	WASTE - STEP ON (NIC)	
AR-11	CART, COMPUTER, (COW, COMPUTER ON WHEELS)	
AR-12	CART, MEDICINE (NIC)	
AR-13	CART, SOILED LINEN (NIC)	
AR-14	REFRIGERATOR, CLINICAL	
AR-15	PATIENT LIFT, CEILING MOUNTED	
AR-16	Printer/Copier	
AR-17	CART, RESUSCITATION (CRASH CART), ADULT	
AR-18	MACHINE TO WHITE BOARD - 36" X 11"	
AR-20	NURSE CALL STATION, RE-ELECT DWGS	
AR-21	NURSE CALL PULL CORD - SHOWER, RE-ELECT DWGS	
AR-22	NURSE CALL PULL CORD - TOILET, RE-ELECT DWGS	
AR-30	CABINET, MEDICINE STORAGE	
AR-30L	CABINET, MEDICINE STORAGE - LOCKABLE	
AR-40	TELEVISION, 32" FLAT PANEL (NIC)	
AR-60	OVEN, SIDE OPENING	MFR'S BUILT-IN KIT
AR-61	DISHWASHER, KIT CHEN	
AR-62	COOK TOP, 4 UNIT	
AR-63	MICROWAVE OVEN, SIDE OPENING	MFR'S BUILT-IN KIT
AR-64	MICROWAVE, COUNTERTOP	
AR-65	ICE MAKER, COUNTER	
AR-66	ICE MAKER, FREESTANDING	
AR-67	REFRIGERATOR, FRENCH DOOR - COUNTER DEPTH	
AR-68	REFRIGERATOR, TOP FREEZER	
AR-69	STORAGE RACK, MEDICAL, GAS CANISTER	
AR-60	WASHER/DRYER, STACKED (EXISTING TO BE RELOCATED)	

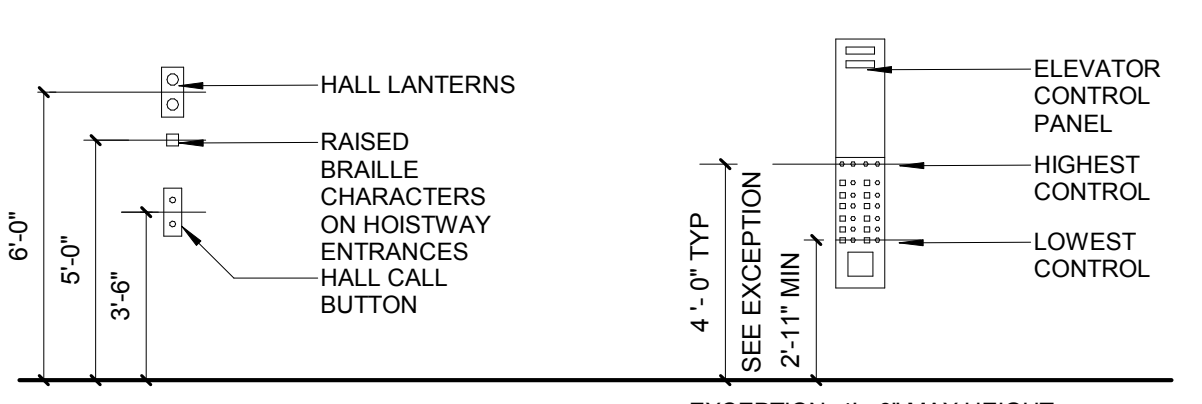


NOTE: ACCESSIBLE AND NON-ACCESSIBLE PLUMBING FIXTURES ARE INDICATED IN THE PLUMBING DRAWINGS. HEIGHTS INDICATED ARE TO TOP OF SEAT.

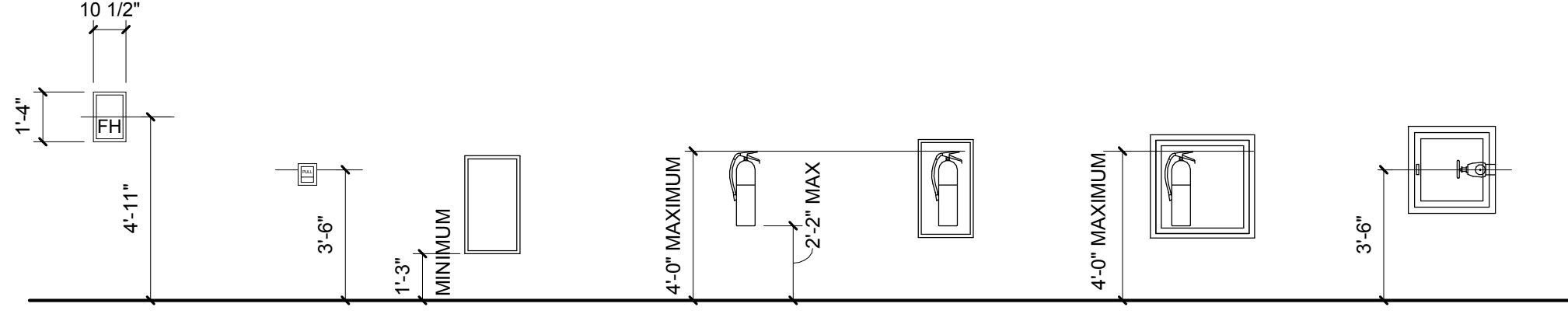
ACCESSORIES AND PLUMBING



ACCESSIBLE SHOWERS

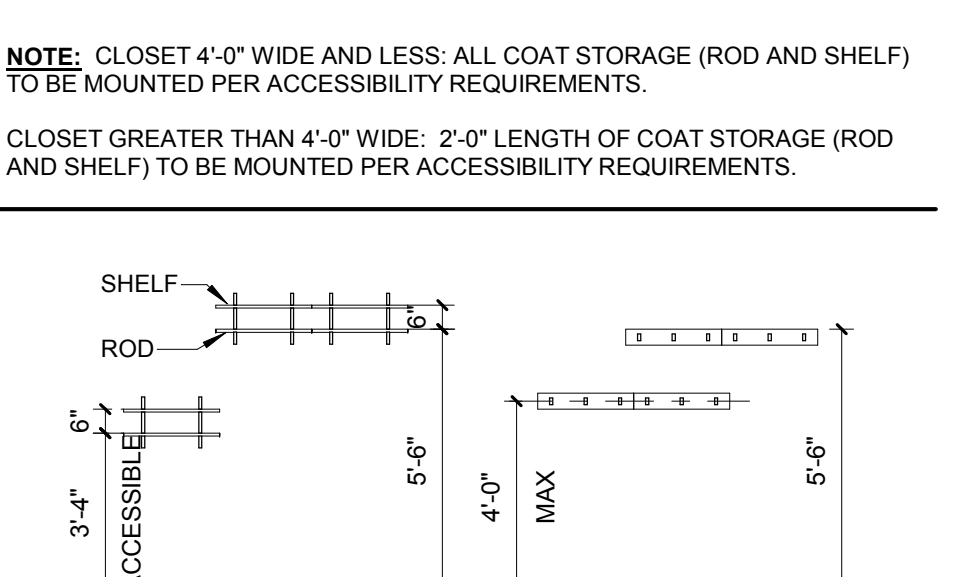


ELEVATOR CONTROLS

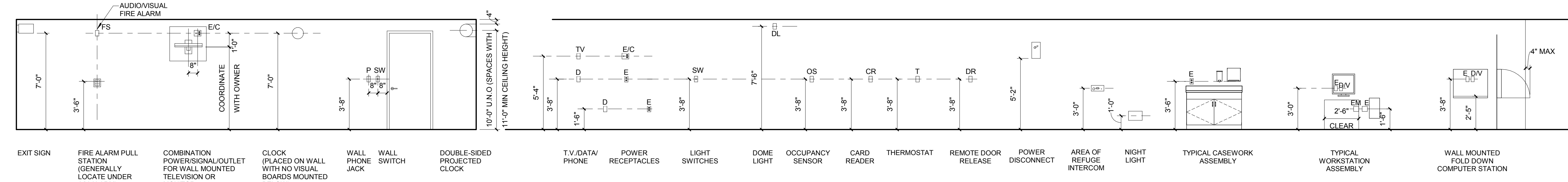
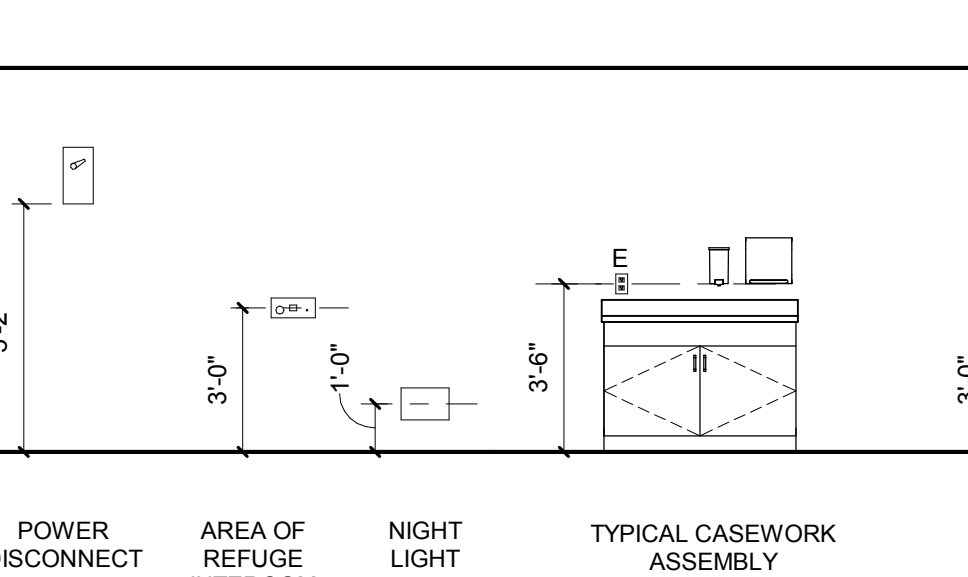


FIRE PROTECTION EQUIPMENT

CODE SIGNAGE ADA DETAILS



COAT HANGING



ELECTRICAL CONTROL DEVICES

FFE RESPONSIBILITY MATRIX

ITEM	Designed By	Procured By	Installed By	COMMENTS
Accessories				
Baby Changing Station - Public Restrooms	CD	O	C	Shown on drawings for location only
Cubicle Curtains	O	O	O	Bath Suite and patient rooms
Cubicle Curtain Track	CD	C	C	Bath Suite and patient rooms
Coat Hook	CD	C	C	Patient rooms & offices
Corner Guards/ Bumper Rails/Handrails	CD	C	C	Coordinate finish/specs w/ Interior Designer
Grab Bars	CD	O	C	
Hand Sanitizer Dispenser, Wall-mounted	O	O	C	
Kick Plates	CD	C	C	
Mirrors	CD	C	C	
Mop & Broom Holder	CD	C	C	
Paper Towel Dispenser	CD	O	C	Shown on drawings for location only
Shelf - Patient Toilet Room	CD	C	C	
Shower Curtain	CD	C	C	
Shower Curtain Rod	CD	C	C	
Soap Dispenser/ Hand Gel	CD	O	C	Shown on drawings for location only
Toilet Paper Dispenser	CD	O	C	Shown on drawings for location only
Towel Bar	CD	C	C	
Waste Receptacle - Built-in	CD	C	C	
Equipment (Medical Equipment)				
Cabinets - Medicine Storage (lockable and non-lockable)	CD	C	C	
Carts - Clinical Supply	O	O	O	
Carts - Crash Adult/Pediatric	CD	O	O	
Carts - Housekeeping	CD	O	O	
Carts - Linen	NA	O	O	
Defibrillators	CD	O	O	
Glove Box Dispenser - Wall Mounted	O	O	O	
Linen Hamper	NA	O	O	
Medical Gas - Flowmeters/Regulators	CD	C	C	
Medical Gas Cables - Receptacles/Casework	CD	C	C	
Medication Dispensing Units	CD	O	O	
Patient Lifts - Ceiling Mounted	V	C	V	See alternates
Patient Lifts - Ceiling Mounted Rough-in	CD	C	C	To remain in contract even if alternate is accepted
Sharps Containers - Wall Mounted	O	O	C	
Equipment (Medical Equipment) - Existing - including those existing items listed above				
Existing Medical Equipment Inventory	O	X	O	
Existing Medical Equipment Tagging	O	X	O	
Existing Medical Equipment Relocation	O	X	O	
Fire Prevention Equipment				
Extinguisher Cabinets	CD	C	C	
Extinguishers	CD	C	C	
Furnishings				
Artwork	O	O	O	
General Bulletin / Magnetic White Boards	CD	C	C	
Patient Room Bulletin / Magnetic White Boards	CD	C	C	
Conference Room - Table/Seating	O	O	O	
Custom Design Casework	CD	C	C	
Lobby/Waiting Room Furniture	O	O	O	
Office Furniture	O	O	O	
Patient Room Furniture (excludes beds)	O	O	O	
Seating - Chairs/Sofas/guest chairs/task seating	O	O	O	
Window Treatments	CD	C	C	
Miscellaneous Equipment				
Medical gas canister rack	CD	C	C	
Lockers	CD	C	C	
Pneumatic Tube System	V	C	V	See alternates
Nourishment Equipment				
Coffee Maker	O	O	O	
Dishwasher	CD	C	C	See alternates
Dishwasher Rough-in	CD	C	C	To remain in contract even if alternate is accepted
Ice Maker/Dispenser - Floor Model	CD	C	C	See alternates
Ice Maker/Dispenser - Countertop	CD	C	C	See alternates
Ice Maker/Dispenser - Rough-in	CD	C	C	See alternates
Microwave	CD	C	C	See alternates
Refrigerator Freezer - Non-Clinical	CD	C	C	See alternates
Undercounter Refrigerator	CD	C	C	See alternates
Washer / Dryer	CD	C	C	See alternates
Wayfinding				
Signage - Code Required	V	C	V	in GC contract
Signage - Rooms	V	C	V	in GC contract
Signage - Facility Wayfinding	V	O	V	not in contract

Revisions:	Date
1 Addendum 01	05/17/2018

CONSULTANTS:

ARCHITECT/ENGINEERS:
CANNONDESIGN
1100 Clark Avenue St. Louis, Missouri 63102 T: 314.241.6250 F: 314.241.2570

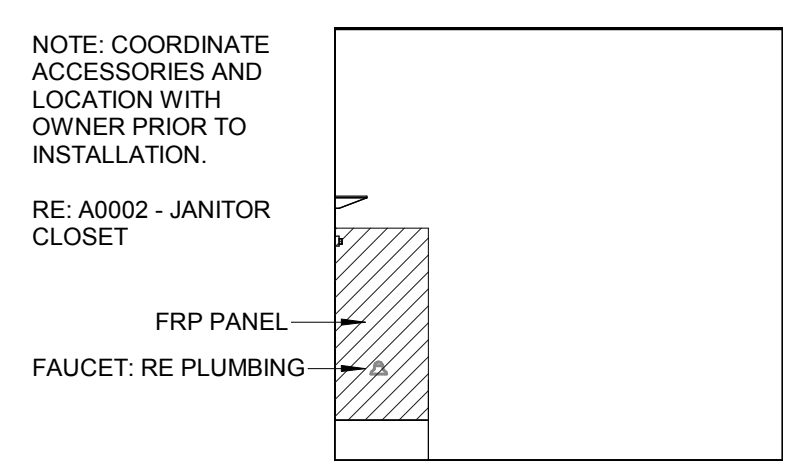
Drawing Title
ARCHITECTURAL EQUIPMENT & MOUNTING INFORMATION
Approved: Project Director

Project Title	Project Number
COMMUNITY LIVING CENTER RENOVATION	586-16-106 CANNON DESIGN PROJECT NO. 0368-01 Building Number
Location	Drawing Number
JACKSON, MS	A0002
Date JAN 12, 2018	Checked GN
	Drawn GP, BB
	Dwg. 8 of 81

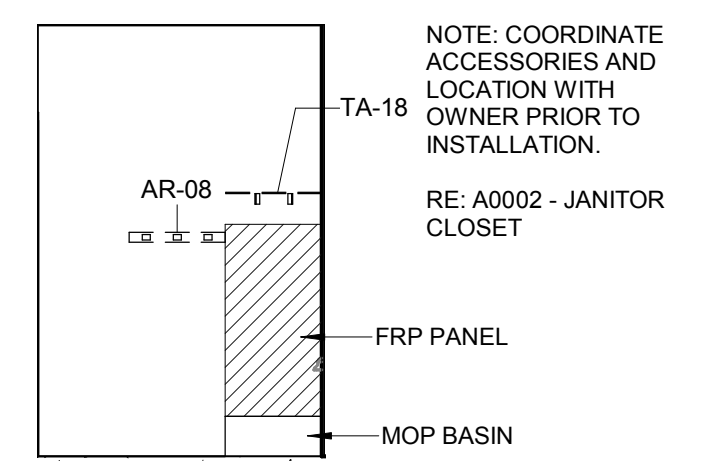
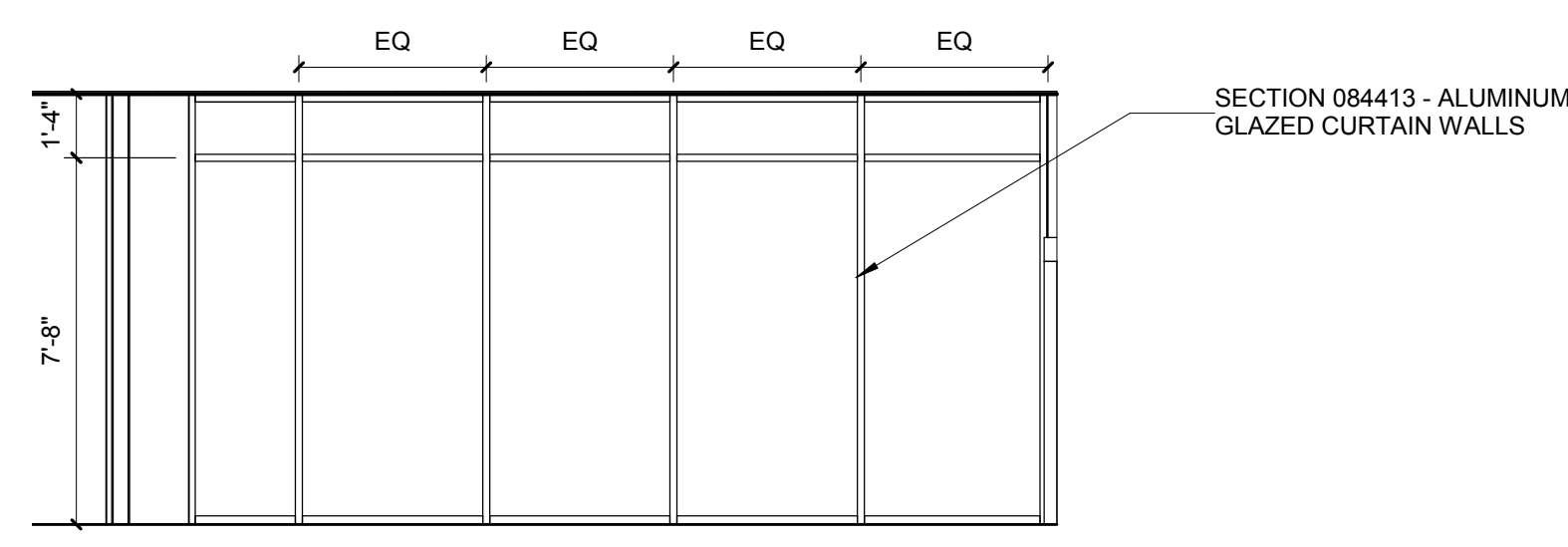
Office of
Construction
and Facilities
Management

GENERAL NOTES - INTERIOR

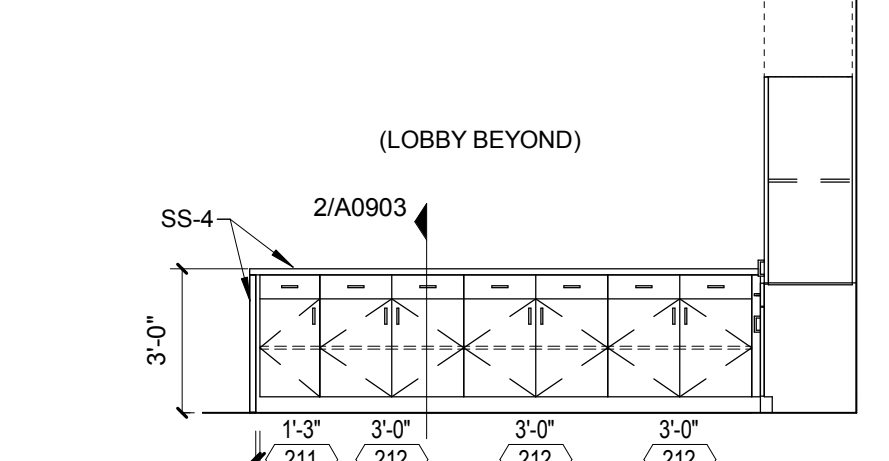
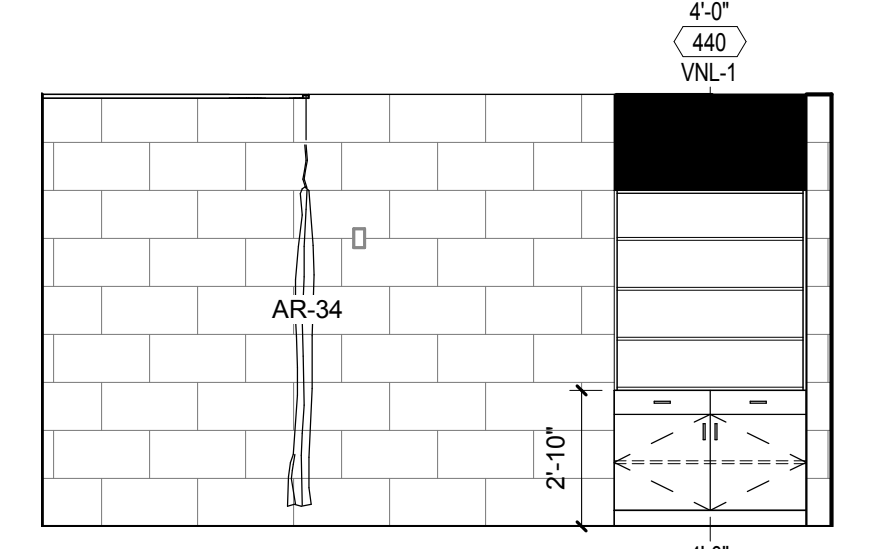
- ALL DIMENSIONS ARE FINISH DIMENSIONS UNLESS OTHERWISE NOTED.
- ALL DIMENSIONS FOR CASEWORK AND MILLWORK ARE TO BE FIELD MEASURED AND VERIFIED BEFORE FABRICATION BEGINS. ALL BASES TO BE 4" HIGH RESILIENT BASE UNLESS OTHERWISE NOTED. REFER TO THE ROOM FINISH FOR ALL FINISHES.
- ALL SOAP DISPENSERS AND PAPER TOWEL DISPENSERS SHOWN ARE TO BE FURNISHED BY THE OWNER AND INSTALLED BY THE CONTRACTOR.
- TYPICAL SWITCH AND RECEPTACLE LOCATIONS MAY BE INDICATED AT INTERIOR ELEVATIONS, BUT DO NOT REPRESENT TOTAL QUANTITIES OR INDIVIDUAL TYPES. AT THESE LOCATIONS ONLY, REFER TO MOUNTING HEIGHT REQUIREMENTS. SEE MECHANICAL AND ELECTRICAL DRAWINGS FOR COMPREHENSIVE FIXTURE AND/OR DEVICE QUANTITIES AND LOCATIONS.
- ALL RECEPTACLES AND OUTLETS BELOW COUNTER HEIGHT ARE TO BE MOUNTED 18" AFF TO CENTERLINE OF DEVICE UNLESS OTHERWISE NOTED.
- ALL RECEPTACLES AND OUTLETS ABOVE COUNTER HEIGHT ARE TO BE MOUNTED 6" ABOVE TOP OF COUNTER OR 6" ABOVE BACKSPASH (WHERE OCCURS) TO CENTERLINE OF DEVICE UNLESS OTHERWISE NOTED.



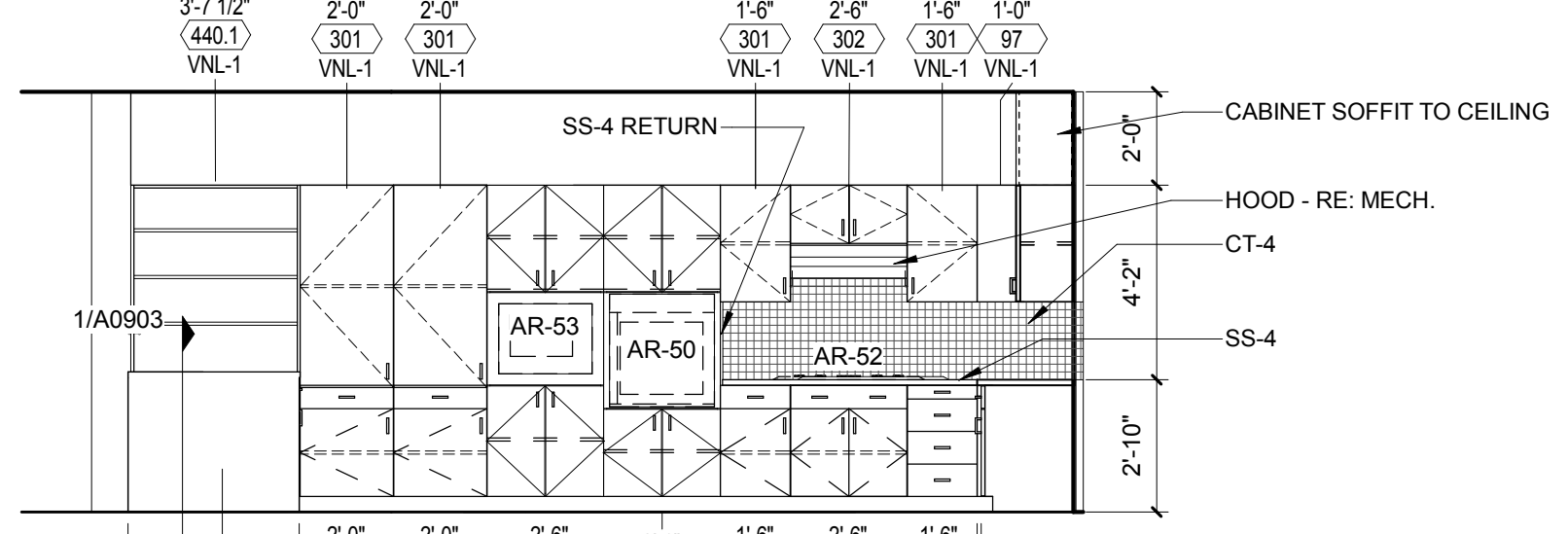
22 G122 - ELEVATION WEST
1/4" = 1'-0"



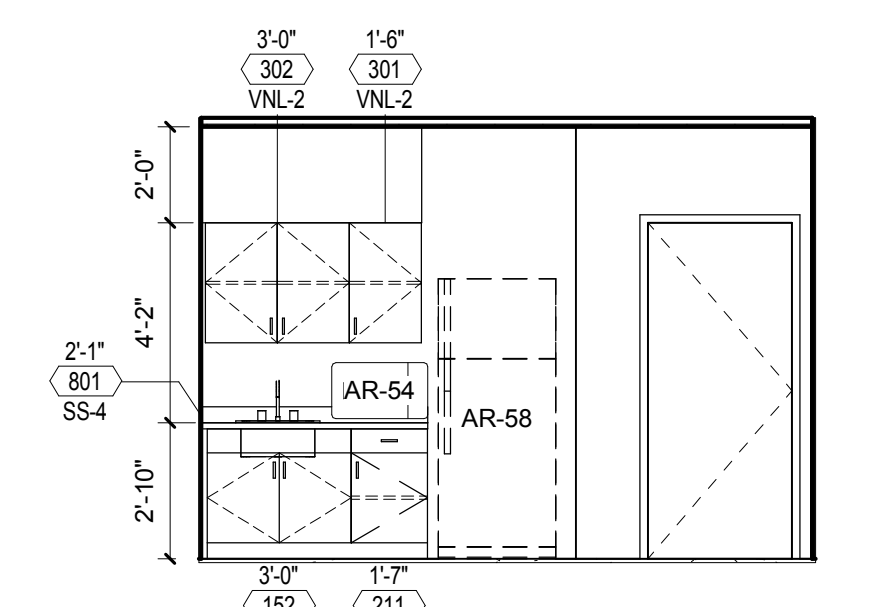
17 G122 - ELEVATION SOUTH
1/4" = 1'-0"



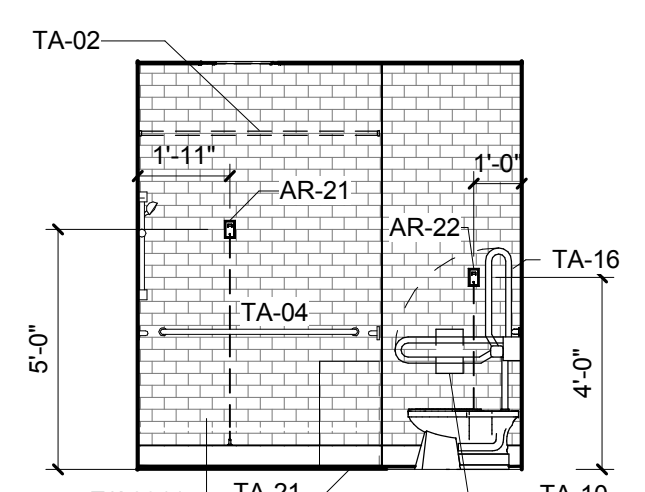
12 ELEVATION - Kitchen G111 - SOUTH
1/4" = 1'-0"



11 ELEVATION - Kitchen G111 - WEST
1/4" = 1'-0"

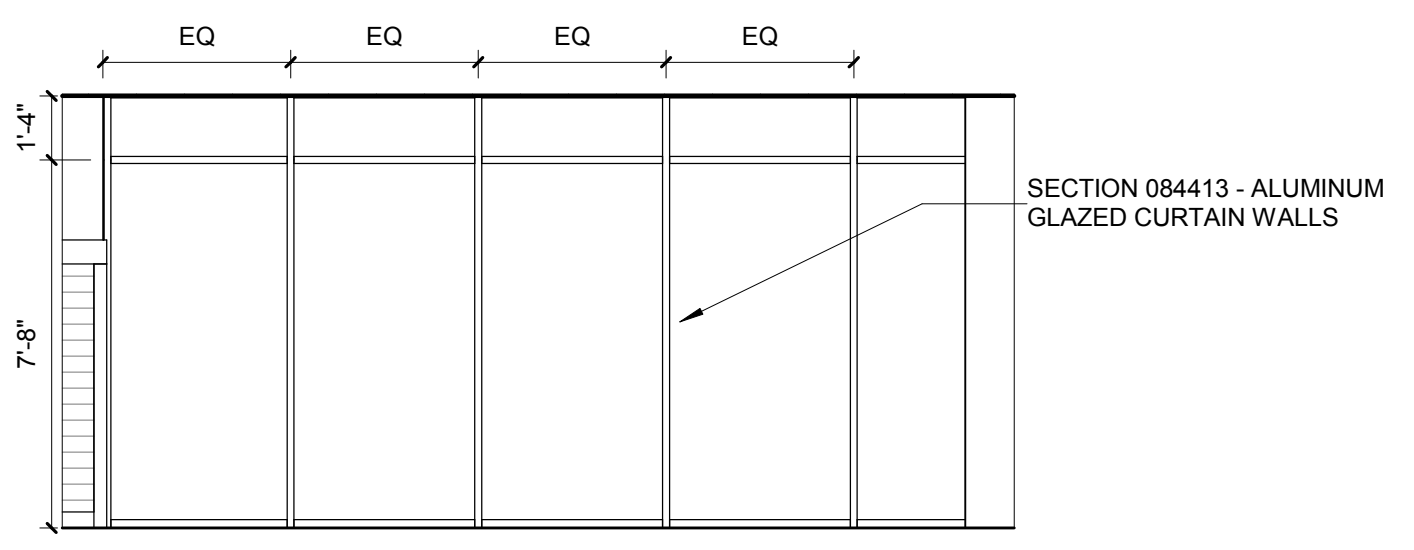


7 ELEVATION - Staff Lounge G125 - NORTH
1/4" = 1'-0"

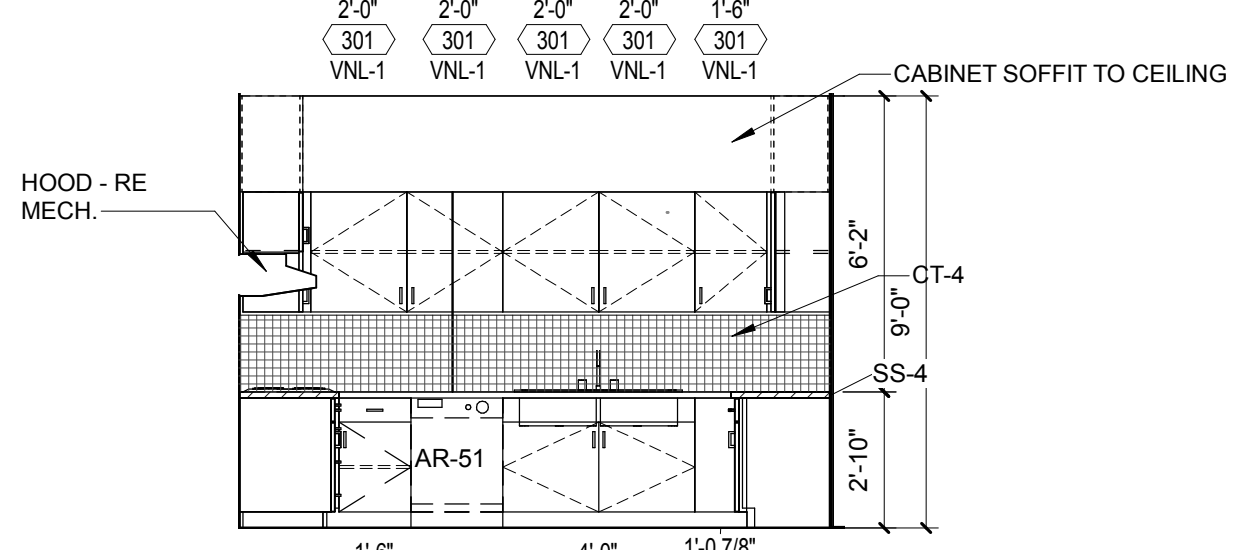
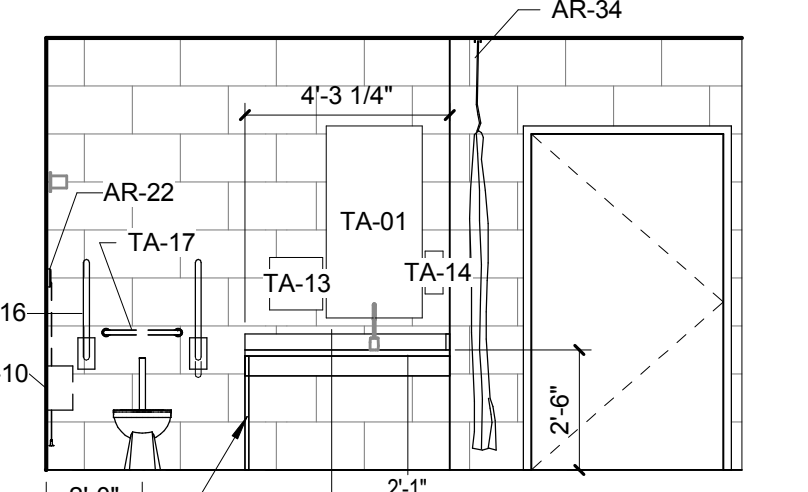


6 ELEVATION - Toilet G165.1 - WEST
1/4" = 1'-0"

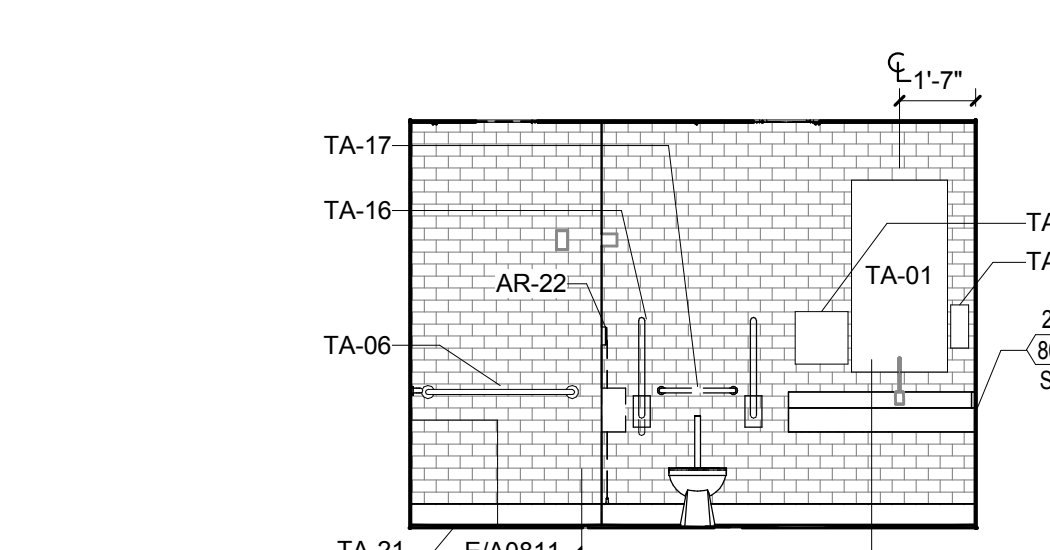
21 ELEVATION - Multi-Purpose Area G102 - NORTH
1/4" = 1'-0"



16 ELEVATION - Bath Suite G154 - SOUTH
1/4" = 1'-0"

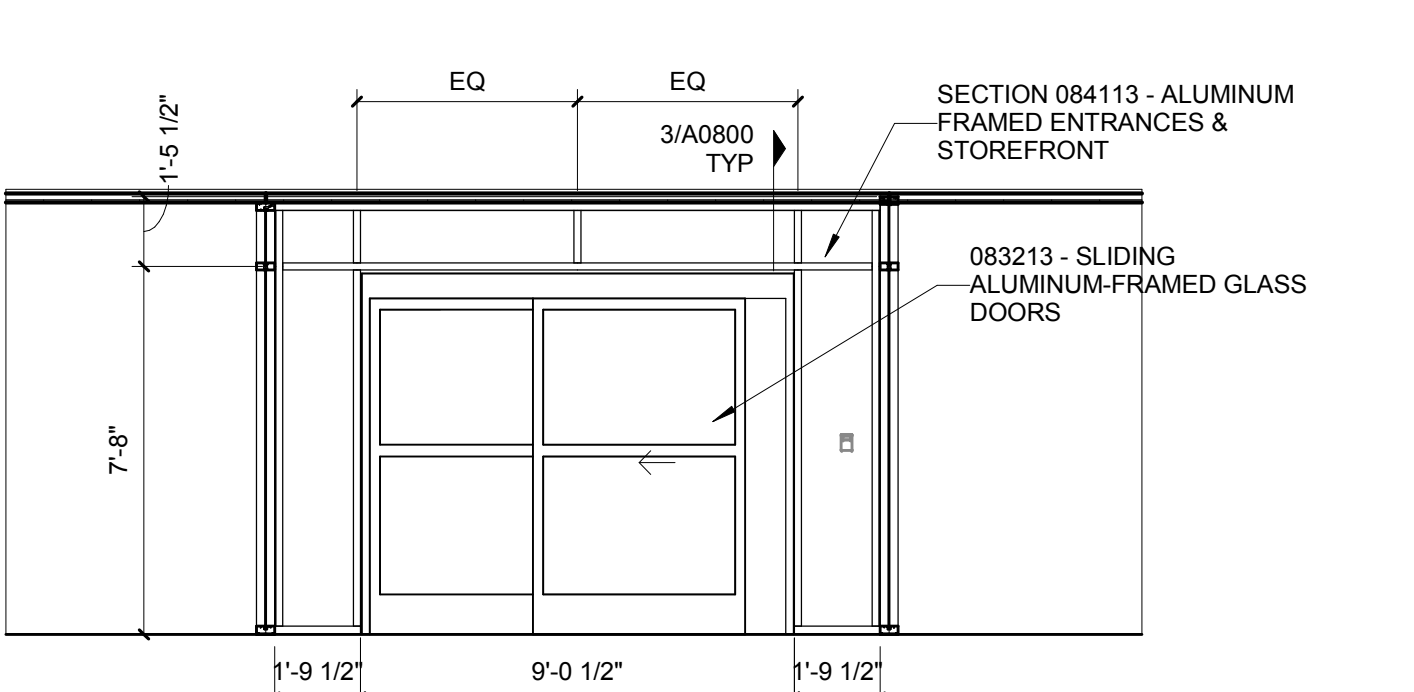


10 ELEVATION - Kitchen G111 - NORTH
1/4" = 1'-0"

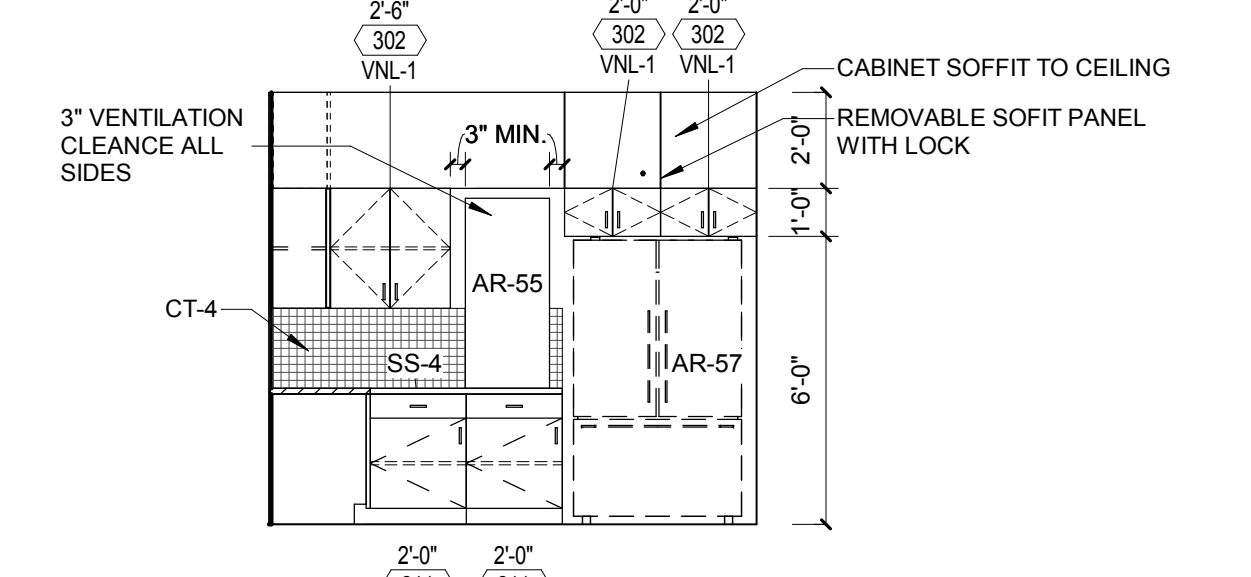
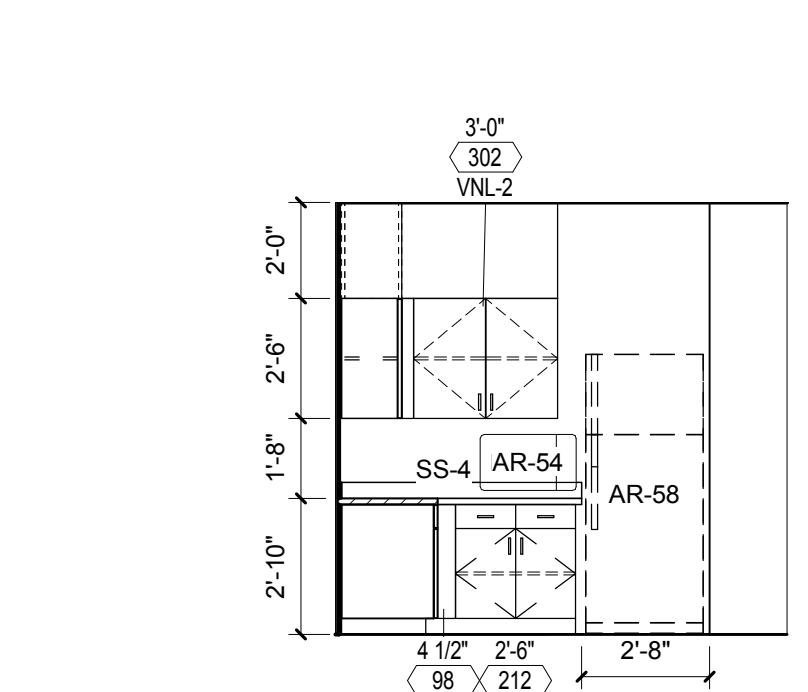


5 ELEVATION - Toilet G165.1 - NORTH
1/4" = 1'-0"

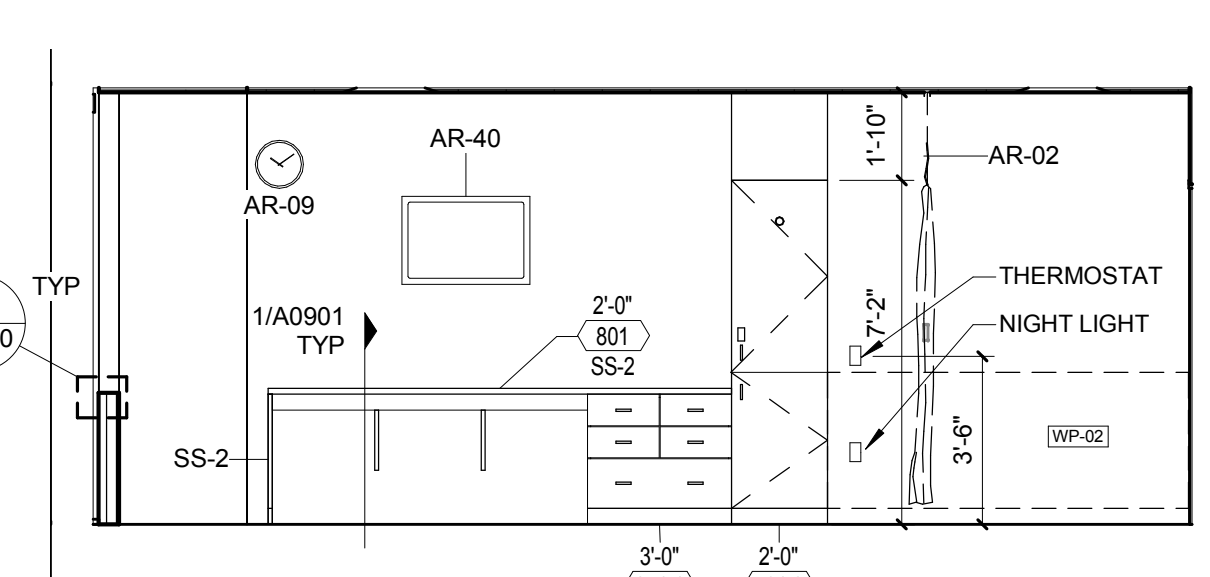
20 ELEVATION - Multi-Purpose Area G112 - SOUTH
1/4" = 1'-0"



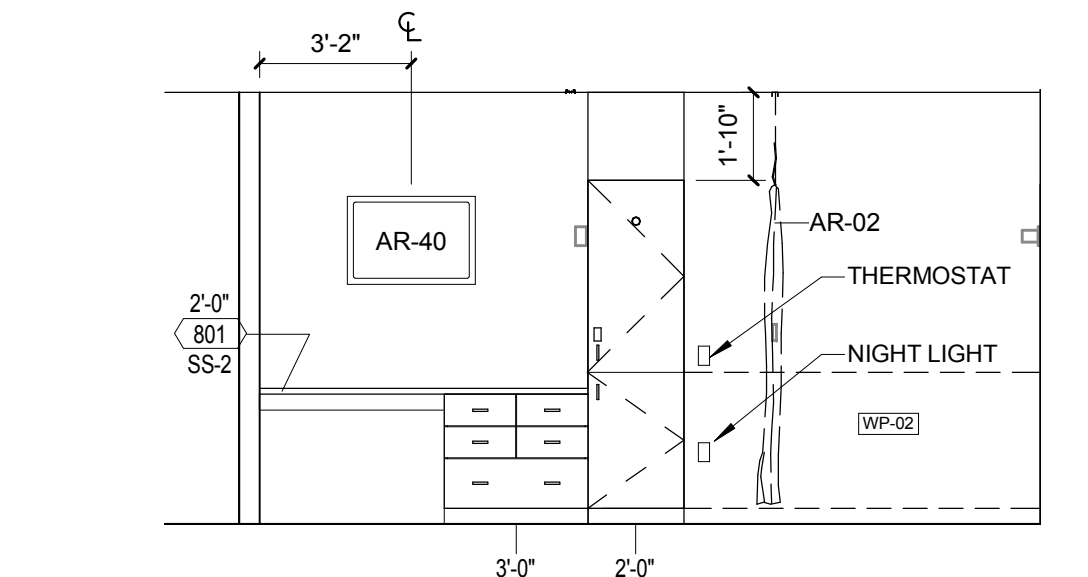
15 ELEVATION - Bath Suite G154 - EAST
1/4" = 1'-0"



9 ELEVATION - Kitchen G111 - EAST
1/4" = 1'-0"

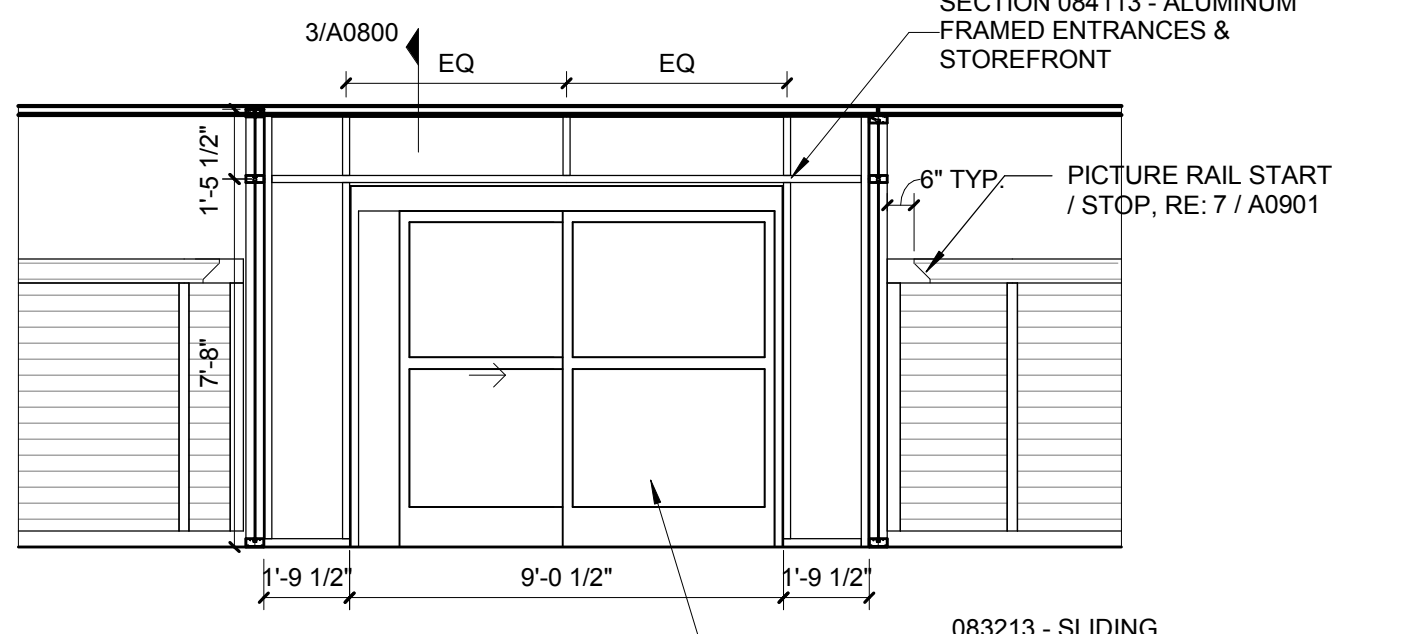


4 ELEVATION - Bedroom G165 - SOUTH
1/4" = 1'-0"

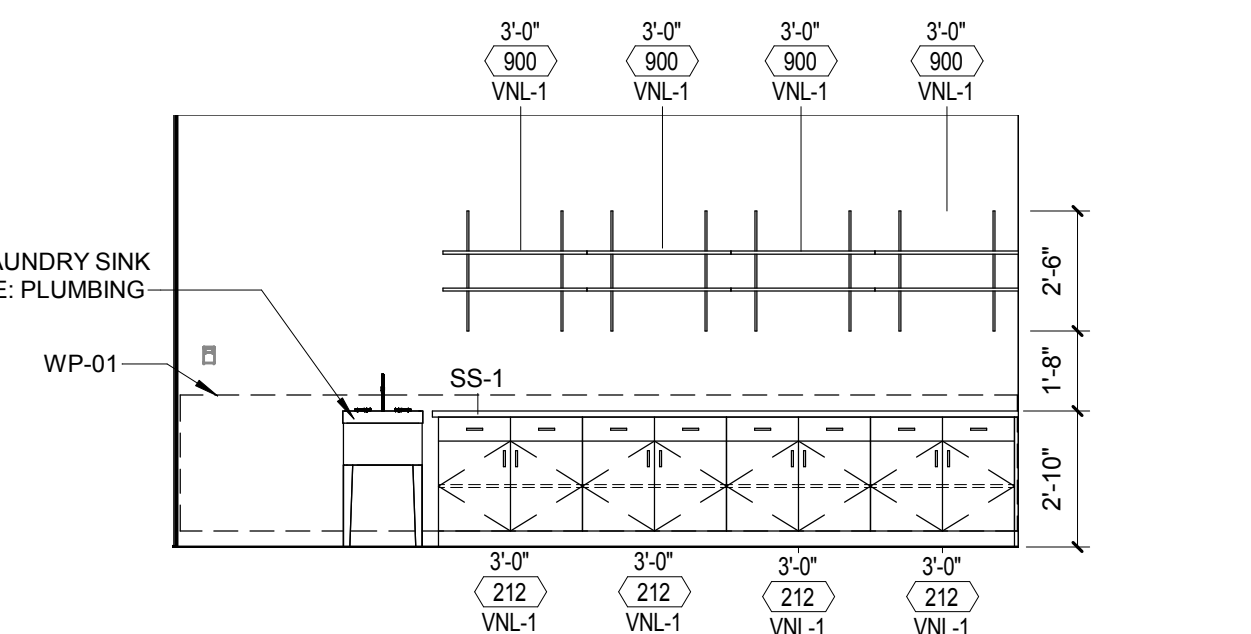
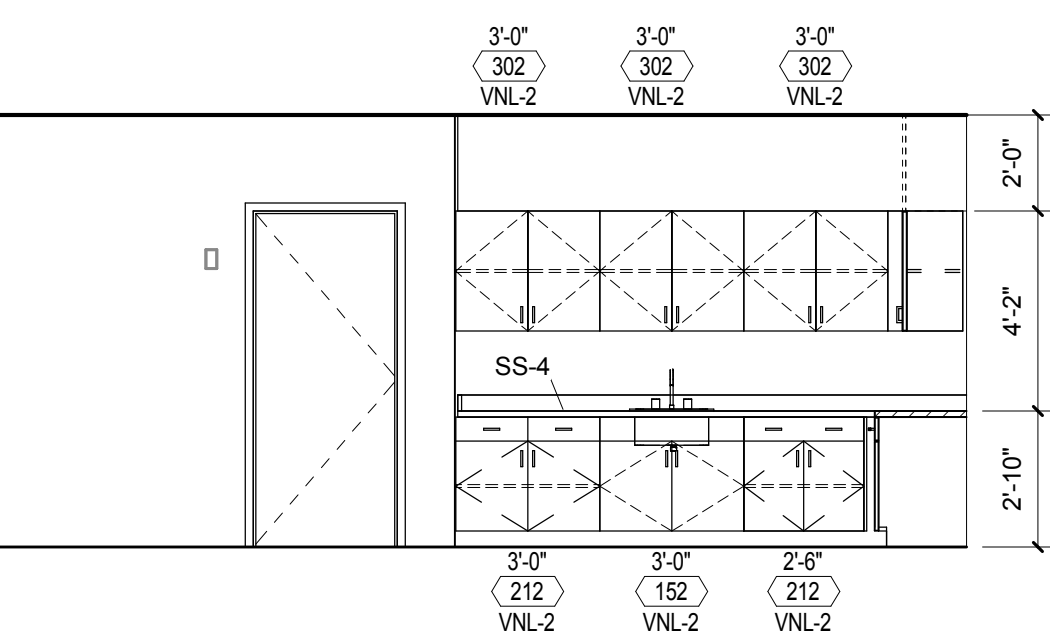


2 ELEVATION - Bedroom G162 - SOUTH
1/4" = 1'-0"

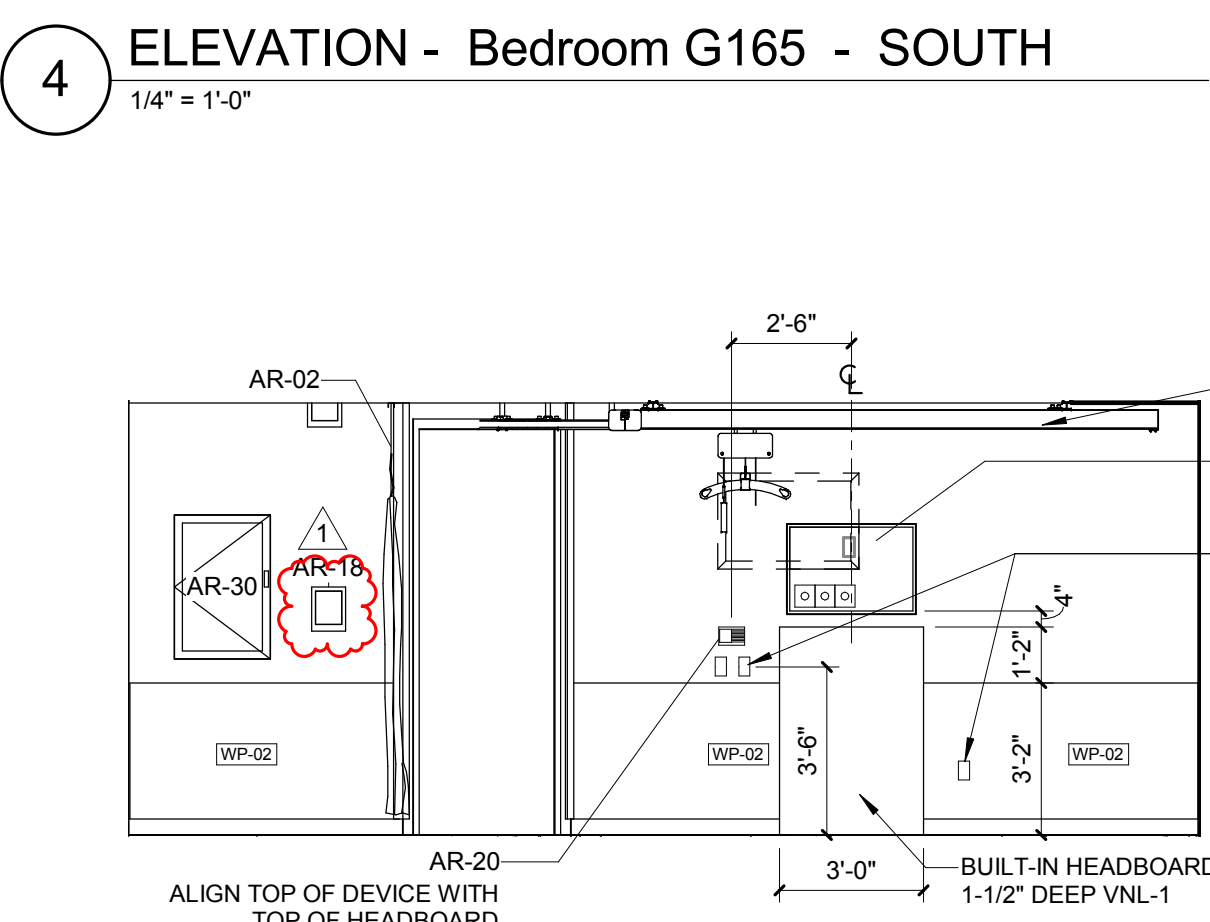
19 ELEVATION - Vestibule 127 - WEST
1/4" = 1'-0"



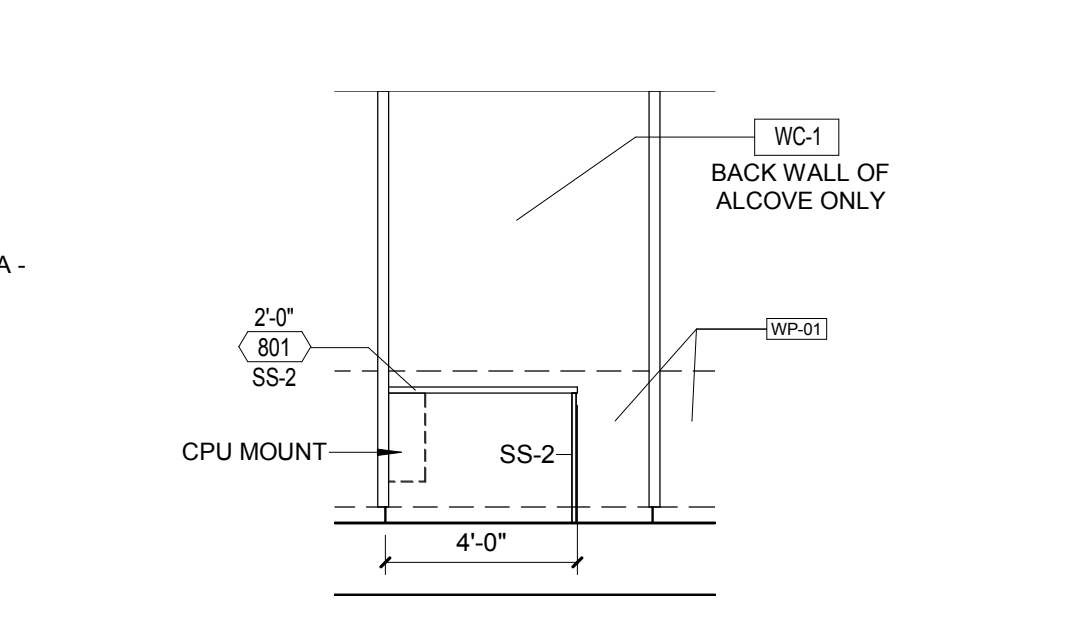
14 ELEVATION - Family Lounge G107 - SOUTH
1/4" = 1'-0"



8 ELEVATION - Laundry G109 - WEST
1/4" = 1'-0"



3 ELEVATION - Bedroom G165 - NORTH
1/4" = 1'-0"



1 ALCOVE
1/4" = 1'-0"

CONSULTANTS:

ARCHITECT/ENGINEERS:

CANNONDESIGN

1100 Clark Avenue
St. Louis, Missouri 63102
T: 314.241.6250
F: 314.241.2570

Drawing Title
INTERIOR ELEVATIONS

Approved: Project Director

Project Title
COMMUNITY LIVING CENTER RENOVATION

Location
JACKSON, MS

Date
JAN 12, 2018

Checked
CN

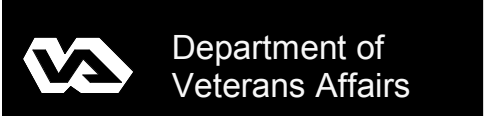
Drawn
GP, BB

Project Number
586-16-106
CANNON DESIGN PROJECT NO. 00640-01
Building Number

Drawing Number
A0601

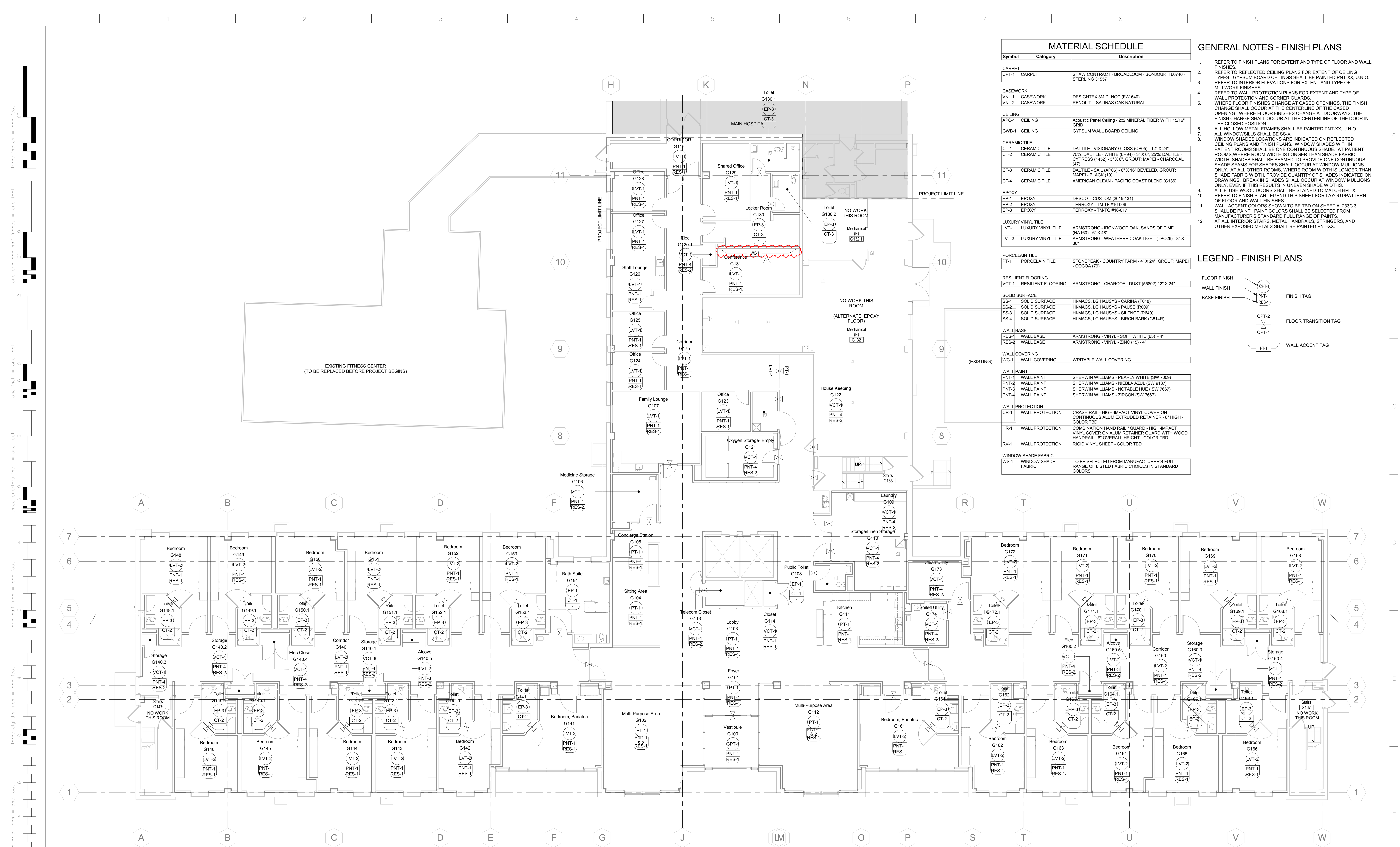
Dwg. 11 of 81

Office of
Construction
and Facilities
Management



© CannonDesign 2017 - All rights reserved. No part of this document may be reproduced or utilized in any form, without prior written authorization by the Cannon Corporation.

three eighths inch = one foot
one eighth inch = one foot
one quarter inch = one foot
one half inch = one foot
three quarters inch = one foot
one inch = one foot
one and one half inches = one foot
two inches = one foot
two and one half inches = one foot
three inches = one foot
three and one half inches = one foot
four inches = one foot
four and one half inches = one foot
five inches = one foot
five and one half inches = one foot
six inches = one foot
six and one half inches = one foot
seven inches = one foot
seven and one half inches = one foot
eight inches = one foot
eight and one half inches = one foot
nine inches = one foot
nine and one half inches = one foot
ten inches = one foot
ten and one half inches = one foot
eleven inches = one foot
eleven and one half inches = one foot
twelve inches = one foot



Symbol	Category	Description
CARPET	CARPET	SHAW CONTRACT - BROADLOOM - BONJOUR I 60746 - STERLING 31557
CASEWORK	CASEWORK	DESIGNTEX 3M DI-NOC (FW-640)
CASEWORK	CASEWORK	RENOLIT - SALINAS OAK NATURAL
CEILING	CEILING	Acoustic Panel Ceiling - 2x2 MINERAL FIBER WITH 15/16" GRID
CEILING	CEILING	GYPSUM WALL BOARD CEILING
CERAMIC TILE	CERAMIC TILE	DALTILE - VISIONARY GLOSS (CP05) - 12" X 24"
CERAMIC TILE	CERAMIC TILE	75% DALTILE - WHITE (LR94) - 3" X 6", 25% DALTILE - CYPRESS (452) - 3" X 6", GROUT: MAPEI - CHARCOAL (47)
CERAMIC TILE	CERAMIC TILE	DALTILE - SAIL (AP06) - 6" X 16" BEVELED. GROUT: MAPEI - BLACK (10)
CERAMIC TILE	CERAMIC TILE	AMERICAN GLEAN - PACIFIC COAST BLEND (C136)
EPOXY	EPOXY	DESCO - CUSTOM (2015-131)
EPOXY	EPOXY	TERRCOXY - TM-TF #16-006
EPOXY	EPOXY	TERRCOXY - TM-TO #16-017
LUXURY VINYL TILE	LUXURY VINYL TILE	ARMSTRONG - IRONWOOD OAK, SANDS OF TIME (NA160) - 6" X 48"
LUXURY VINYL TILE	LUXURY VINYL TILE	ARMSTRONG - WEATHERED OAK LIGHT (TP026) - 8" X 36"
PORCELAIN TILE	PORCELAIN TILE	STONEPEAK - COUNTRY FARM - 4" X 24", GROUT: MAPEI - COCOA (79)
RESILIENT FLOORING	RESILIENT FLOORING	ARMSTRONG - CHARCOAL DUST (55802) 12" X 24"
SOLID SURFACE	SOLID SURFACE	HI-MACS, LG HAUSYS - CARINA (T018)
SOLID SURFACE	SOLID SURFACE	HI-MACS, LG HAUSYS - PALISE (R009)
SOLID SURFACE	SOLID SURFACE	HI-MACS, LG HAUSYS - SILENCE (R640)
SOLID SURFACE	SOLID SURFACE	HI-MACS, LG HAUSYS - BIRCH BARK (G514R)
WALL BASE	WALL BASE	ARMSTRONG - VINYL - SOFT WHITE (65) - 4"
WALL BASE	WALL BASE	ARMSTRONG - VINYL - ZINC (15) - 4"
WALL COVERING	WALL COVERING	WRITABLE WALL COVERING
WALL PAINT	WALL PAINT	SHERWIN WILLIAMS - PEARLY WHITE (SW 7009)
WALL PAINT	WALL PAINT	SHERWIN WILLIAMS - NIEBLA AZUL (SW 9137)
WALL PAINT	WALL PAINT	SHERWIN WILLIAMS - NOTABLE HUE (SW 7667)
WALL PAINT	WALL PAINT	SHERWIN WILLIAMS - ZIRCON (SW 7667)
WALL PROTECTION	WALL PROTECTION	CRASH RAIL - HIGH-IMPACT VINYL COVER ON CONTINUOUS ALUM EXTRUDED RETAINER - 8" HIGH - COLOR TBD
WALL PROTECTION	WALL PROTECTION	COMBINATION HAND RAIL / GUARD - HIGH-IMPACT VINYL COVER ON ALUM RETAINER GUARD WITH WOOD HANDRAIL - 8" OVERALL HEIGHT - COLOR TBD
WALL PROTECTION	WALL PROTECTION	RIGID VINYL SHEET - COLOR TBD
WINDOW SHADE FABRIC	WINDOW SHADE FABRIC	TO BE SELECTED FROM MANUFACTURER'S FULL RANGE OF LISTED FABRIC CHOICES IN STANDARD COLORS

- ### GENERAL NOTES - FINISH PLANS
- REFER TO FINISH PLANS FOR EXTENT AND TYPE OF FLOOR AND WALL FINISHES.
 - REFER TO REFLECTED CEILING PLANS FOR EXTENT OF CEILING TYPES. GYPSUM BOARD CEILINGS SHALL BE PAINTED PNT-XX, U.N.O. REFER TO INTERIOR ELEVATIONS FOR EXTENT AND TYPE OF MILLWORK FINISHES.
 - REFER TO WALL PROTECTION PLANS FOR EXTENT AND TYPE OF WALL PROTECTION AND CORNER GUARDS.
 - WHERE FLOOR FINISHES CHANGE AT CASSED OPENINGS, THE FINISH CHANGE SHALL OCCUR AT THE CENTERLINE OF THE CASSED OPENING. WHERE FLOOR FINISHES CHANGE AT DOORWAYS, THE FINISH CHANGE SHALL OCCUR AT THE CENTERLINE OF THE DOOR IN THE CLOSED POSITION.
 - ALL HOLLOW METAL FRAMES SHALL BE PAINTED PNT-XX, U.N.O.
 - ALL WINDOW SILLS SHALL BE SS-X.
 - WINDOW SHADES LOCATIONS ARE INDICATED ON REFLECTED CEILING PLANS AND FINISH PLANS. WINDOW SHADES WITHIN PATIENT ROOMS SHALL BE ONE CONTINUOUS SHADE. AT PATIENT ROOMS WHERE ROOM WIDTH IS LONGER THAN SHADE FABRIC WIDTH, SHADES SHALL BE SEAMED TO PROVIDE ONE CONTINUOUS SHADE SEAMS FOR SHADES SHALL OCCUR AT WINDOW MULLIONS ONLY. AT ALL OTHER ROOMS, WHERE ROOM WIDTH IS LONGER THAN SHADE FABRIC WIDTH, PROVIDE QUANTITY OF SHADES INDICATED ON DRAWINGS. BREAK IN SHADES SHALL OCCUR AT WINDOW MULLIONS ONLY, EVEN IF THIS RESULTS IN UNEVEN SHADE WIDTHS.
 - ALL FLUSH WOOD DOORS SHALL BE STAINED TO MATCH HPL-X. REFER TO FINISH PLAN LEGEND THIS SHEET FOR LAYOUT/PATTERN OF FLOOR AND WALL FINISHES.
 - WALL ACCENT COLORS SHOWN TO BE TBD ON SHEET A1233C.3 SHALL BE PAINT. PAINT COLORS SHALL BE SELECTED FROM MANUFACTURER'S STANDARD FULL RANGE OF PAINTS.
 - AT ALL INTERIOR STAIRS, METAL HANDRAILS, STRINGERS, AND OTHER EXPOSED METALS SHALL BE PAINTED PNT-XX.

LEGEND - FINISH PLANS

FLOOR FINISH	(CPT-1)	FINISH TAG
WALL FINISH	(PNT-1)	FINISH TAG
BASE FINISH	(RES-1)	FINISH TAG
	(CPT-2)	FLOOR TRANSITION TAG
	(PNT-1)	WALL ACCENT TAG

1 GROUND FLOOR FINISH PLAN
1/8" = 1'-0"

CONSULTANTS: 		ARCHITECT/ENGINEERS: CANNONDESIGN 1100 Clark Avenue St. Louis, Missouri 63102 T: 314.241.6250 F: 314.241.2570		Drawing Title GROUND FLOOR FINISH PLAN		Project Title COMMUNITY LIVING CENTER RENOVATION		Project Number 586-16-106 CANNON DESIGN PROJECT NO. 0360-B1 Building Number		Office of Construction and Facilities Management Department of Veterans Affairs	
1 Addendum 01 Revisions:		Date 05/17/2018		Approved: Project Director		Location JACKSON, MS		Drawing Number A1231		Date JAN 12, 2018	
						Checked CN		Drawn GP,BB		Dwg. 25 of 81	