

# **EndoMAXX™**

## Fully Covered Esophageal Stent

**NEW  
REVOLUTIONARY  
DESIGN**



EXPANDING THE POSSIBILITIES™



**MERTMEDICA**  
**ENDOTEK®**

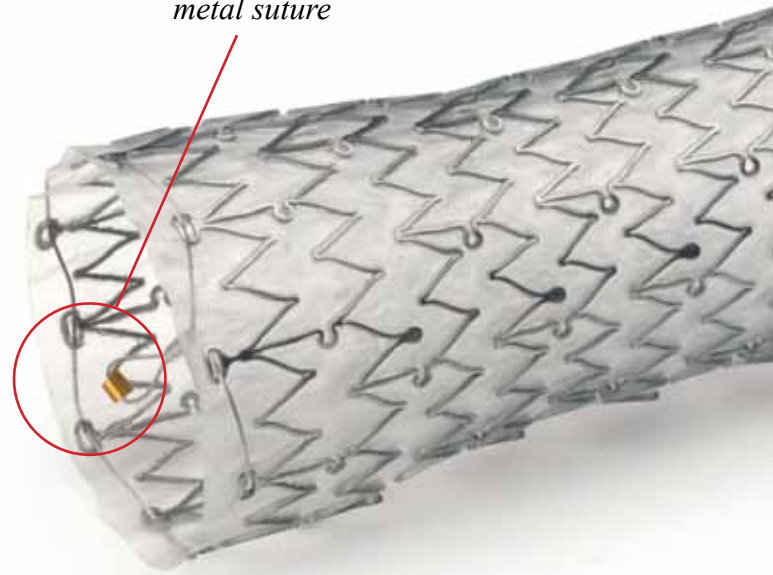
# ENDOMAXX<sup>TM</sup> FULLY COVERED

*The EndoMAXX Fully Covered*

*Esophageal Stent begins a new era  
in esophageal stenting. Based upon  
years of clinical experience and  
feedback, the EndoMAXX incorporates  
advanced features designed to alleviate  
common adverse events associated  
with esophageal stenting.*

## **GOLD SUTURE MARKER**

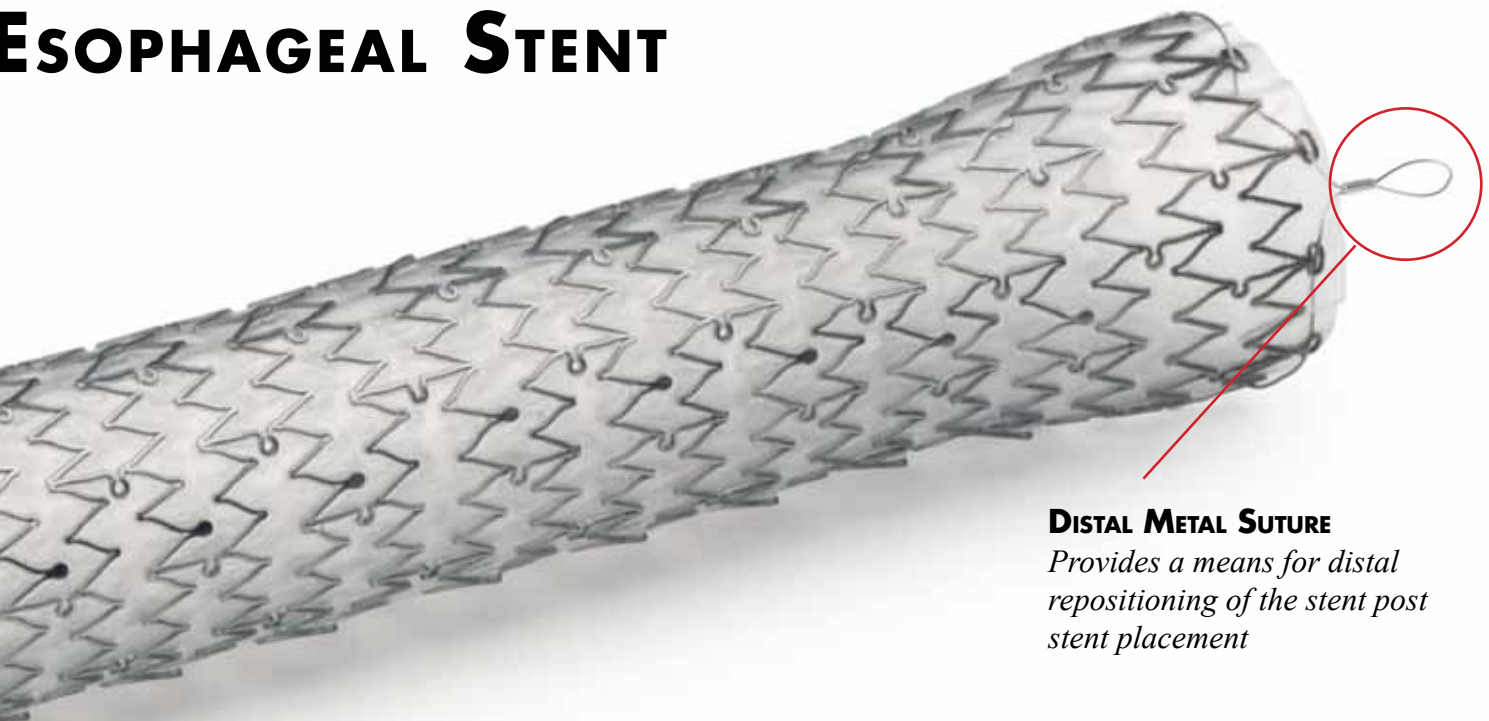
*Increases Endoscopic and  
fluoroscopic visibility of the  
metal suture*



The new proprietary design of the EndoMAXX allows for variations in radial force along the stent body that are designed to reduce tissue irritation and damage to healthy esophageal mucosa.

The unique design helps facilitate soft and atraumatic interaction with healthy tissue while maintaining luminal patency and stent integrity.

# ESOPHAGEAL STENT

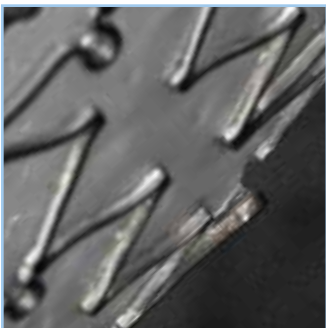


## **DISTAL METAL SUTURE**

*Provides a means for distal repositioning of the stent post stent placement*

**THE LASER CUT STENT DESIGN PROVIDES FOR VIRTUALLY NO FORESHORTENING NOR ELONGATION OF THE STENT RESULTING IN:**

- Increased deployment accuracy with no need to compensate for stent foreshortening
- Reduction in stent movement “inch worming” as a result of the stent elongating and shortening from changes in compression force



## **REDESIGNED ANTI-MIGRATION STRUTS**

*Provide increased mucosal wall contact and friction, while remaining fully covered.*



## **SILICONE COVERING**

*Designed to inhibit tissue ingrowth and stent degradation*



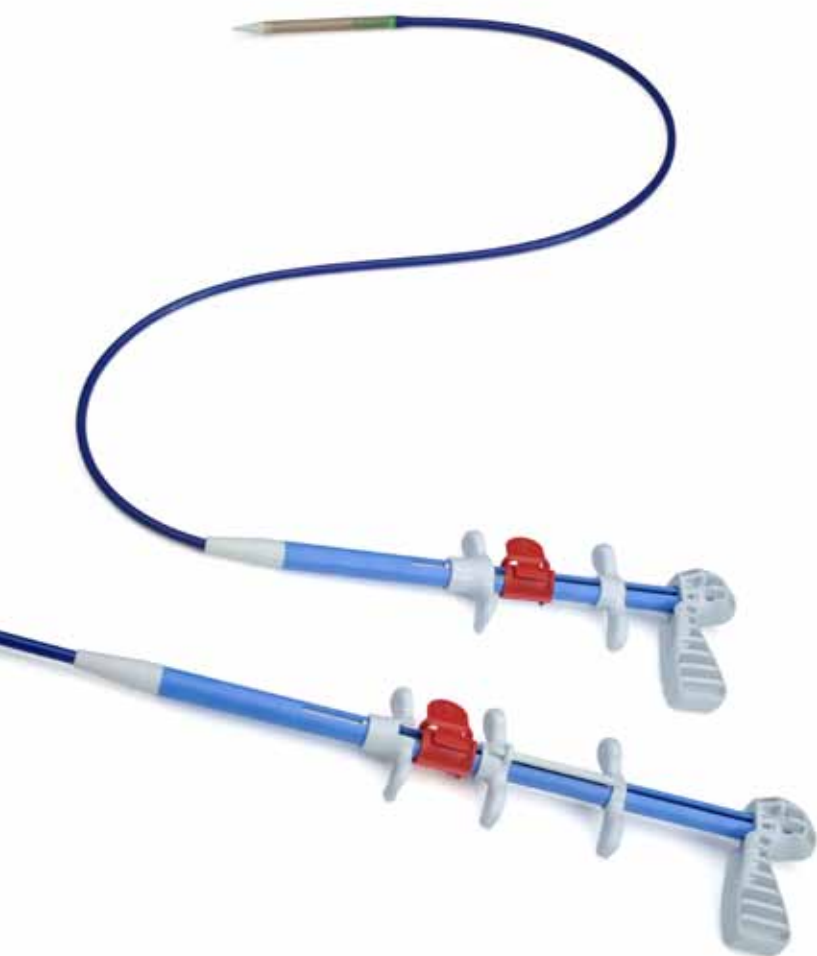
## **PROXIMAL METAL SUTURE**

*Provides increased resistance to gastric fluid and increases suture integrity for immediate stent repositioning or removal*

# EndoMAXX™ delivery system

## KEY FEATURES

- Coupled with the non foreshortening stent design, the ergonomic deployment handle and trigger provide unmatched ease of use and accuracy in stent deployment
- Designed for one-handed deployment
- Incorporates a pliable and tapered tip to facilitate placement through tight strictures.
- Featuring a low profile, flexible and preloaded design



## EndoMAXX™ Fully Covered Esophageal Stent

Catalog Number	Stent Size Options			Delivery Device		Packaged
	Nominal Stent Diameter (mm)	Nominal Stent Mid Body Diameter (mm)	Expanded Stent Length (mm)	Working Diameter (F)	Working Length (cm)	

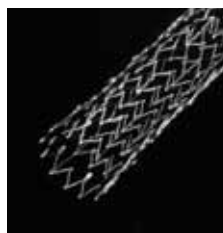
## OVER-THE-WIRE

MAXX-197	19	24	70	24	90	1 unit
MAXX-1910	19	24	100	24	90	1 unit
MAXX-1912	19	24	120	24	90	1 unit
MAXX-1915	19	24	150	24	90	1 unit
MAXX-237	23	28	70	24	90	1 unit
MAXX-2310	23	28	100	24	90	1 unit
MAXX-2312	23	28	120	24	90	1 unit
MAXX-2315	23	28	150	24	90	1 unit

## MAXXWIRE™ Guide Wire

Catalog Number	Guide Wire Specifications				Packaged
	O.D. (in)	Length (cm)	Shaft	Tip Style	
80129-404	0.035	180	Super Stiff	Straight	1 unit
80129-406	0.035	260	Super Stiff	Straight	1 unit

## Also Available



ALIMAXX-B® Metal Biliary Stent



Brighton™ Bipolar Probe



BIG60™ Inflation Device



Negative Pressure Syringe

Merit Medical Systems, Inc. • 1600 West Merit Parkway • South Jordan, Utah 84095 • 1-801-253-1600 • 1-800-35-MERIT

[www.merit.com/endotek](http://www.merit.com/endotek)

Merit Medical EUROPE, AFRICA AND THE MIDDLE EAST (EMEA) Amerikalaan 42, 6199 AE Maastricht-Airport, The Netherlands Tel: +31 43 358 82 22

Merit Medical Ireland Ltd. • Parkmore Business Park West Galway, Ireland • +353 (0) 91 703 733

Free phone for specific country: Austria 0800 295 374 • Belgium 0800 72 906 (Dutch) 0800 73 172 (French) • Denmark 80 88 00 24 • France 0800 91 60 30

Germany 0800 182 0871 • Ireland (republic) 1800 553 163 • Luxembourg 8002 25 22 • Netherlands 0800 022 81 84 • Sweden 020 792 445 • UK 0800 973 115

402357001/A ID 021012