

TUNNEL B5 TO B7

NOTE: THIS TUNNEL IS A MAIN THROUGHWAY TO BUILDING 42. SO ONLY 1/2 OF THIS TUNNEL WILL BE ALLOWED TO BE CLOSED TO ACCOMPLISH THIS WORK THIS WORK SO BARRICADES WILL BE REQUIRED.

GENERAL NOTES:

- CONTRACTOR TO VISIT SITE PRIOR TO VERIFY CONDITIONS OF AREA.
- GENERAL CONTRACTOR SHALL CO-ORDINATE THE WORK OF ALL SUB CONTRACTORS.
- PROVIDE EFFECTIVE DUST AND DEBRIS CONTROL ON A CONTINUING BASIS.
- ALL DEBRIS REMOVED FROM PROJECT IS THE PROPERTY OF THE CONTRACTOR AND SHALL BE REMOVED DAILY FROM THE PROJECT SITE.
- USE BARRICADES WHERE NECESSARY TO LIMIT ACCESS TO PROJECT AREA.
- THE REMOVAL OF THE MASTIC WITH ASBESTOS IN THE TUNNEL B5 TO B7 WILL REQUIRE WORKING ON THE WEEKEND AND AFTER HOURS TO ACCOMPLISH THE FLOORING WORK.



REMOVE ALL METAL HANDRAIL AND VINYL BUMPER GUARD AND TURN METAL HANDRAILS OVER TO VA

ITEMS OF REMOVAL



STANDARD WINDOW TO BE REMOVED AND REPLACED WITH NEW ALUMINUM WINDOW

TYPICAL FOR REMOVAL



PAINT DOOR PER SPECS

REMOVE AND INSTALL NEW VINYL ARMOUR PLATE TO COVER EXISTING LOWER HALF OF DOOR.

TUNNEL DOOR NEAR B6 ENTRANCE-- NORTH END



REMOVE AND INSTALL NEW S.S. CORNER GUARDS EQUAL TO EXISTING. PATCH ALL DAMAGED SECTIONS AS REQUIRED PRIOR TO INSTALLING NEW ITEMS

PAINT DOOR PROTECTION. COLOR WILL BE CHOSEN AFTER AWARD.

TUNNEL DOOR NEAR B6 ENTRANCE-- SOUTH END



PAINT DOOR PER SPECS

NEW METAL PULL PLATE

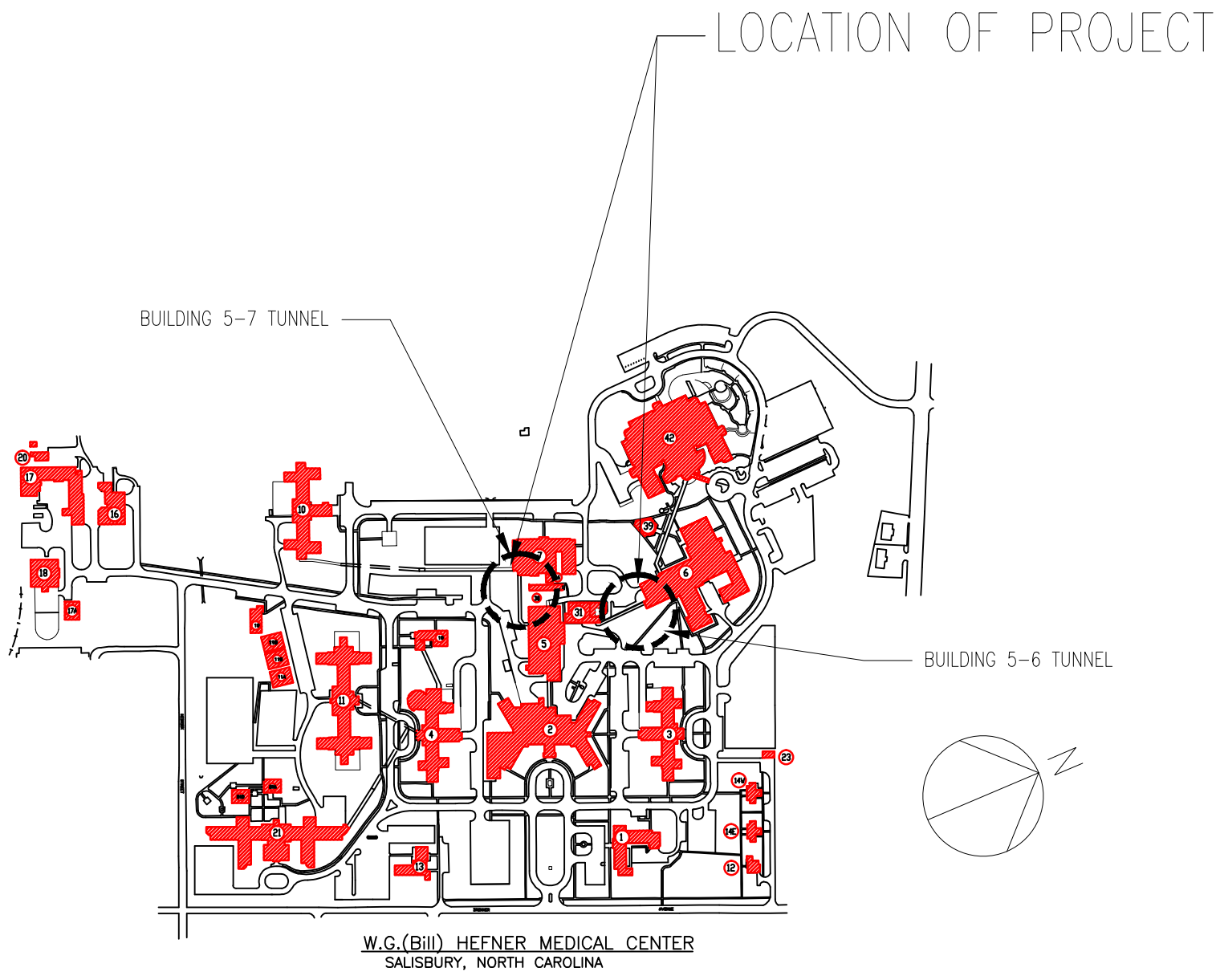
INSTALL NEW S.S. CORNER GUARDS MATCH EXISTING SIZE FROM OTHER DOOR OPENINGS.

REMOVE EXISTING AND INSTALL NEW PLASTIC 41" x 41" KICKPLATE


TUNNEL DOOR NEAR B6 ENTRANCE SOUTH END

TUNNEL 5 / 6 PROJECT NOTES:

1. REMOVE METAL HANDRAILS, VINYL BUMPER GUARD AND TURN OVER ALUMINUM HANDRAILS AND BRACKETS TO THE VA AND DISPOSE THE VINYL BUMPER GUARDS OFF STATION. PATCH EXISTING HOLES AND INSTALL NEW HANDRAIL, WALL GUARD AND RIGID VINYL WALL PROTECTION AS PER DETAILS ON SHEET 2 AND PER MANUFACTURE REQUIREMENTS.
2. REMOVE ALL VCT AND MASTIC FROM THIS AREA. MASTIC IS NON ASBESTOS.
3. REMOVE ALL EXISTING WINDOWS AND INSTALL NEW ALUMINUM WINDOWS. REMOVE THE ENTIRE METAL WINDOW FRAME FROM OPENING. SEE SHEET 4 OF 4 FOR THE DETAILS OF NEW WINDOWS.
4. PATCH AND REPAIR ANY DAMAGE TO EXISTING WALLS AND PAINT WALLS AND CEILINGS AS REQUIRED BY SPECIFICATIONS. SEE FINISH SCHEDULE ON SHEET 3 FOR COLOR AND TILE.
5. PAINT EXISTING METAL DOOR AND FRAME AS PER SPECS REQUIRE. SEE PHOTOS OF DOORS FOR ADDITIONAL INFORMATION AND REQUIREMENTS. PREP FLOOR AFTER EXISTING TILE AND MASTIC ARE REMOVED FOR THE INSTALLATION OF NEW V.C.T AS PER REQUIREMENTS ON SHEET 3 IN THE FINISH SCHEDULE. INSTALL FLOORING IN ACCORDANCE TO THE MANUFACTURES REQUIREMENTS AND VA SPECS. COMPLETE ONE HALF OF TUNNEL PRIOR TO STARTING THE OTHER SIDE. PROVIDE AND INSTALL 4" LONG TOE VINYL BASE. CHIP EXISTING COVE BASE ALONG WALL AND INSTALL GROUT TO LEVEL FLOOR PRIOR TO INSTALLING FLOORING MATERIAL. SEE TILE FLOORING LAYOUT SHEET 3.
- 6.

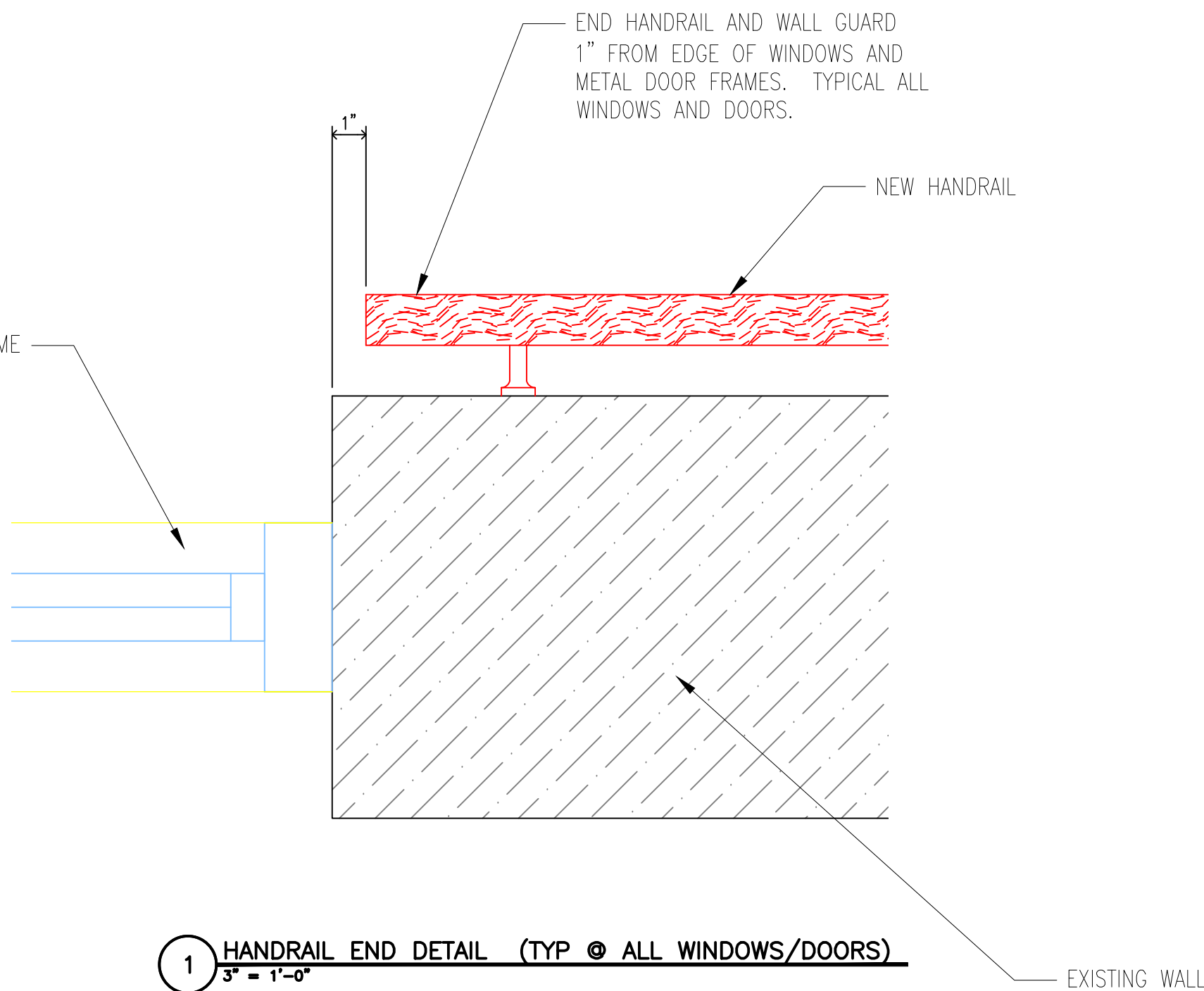
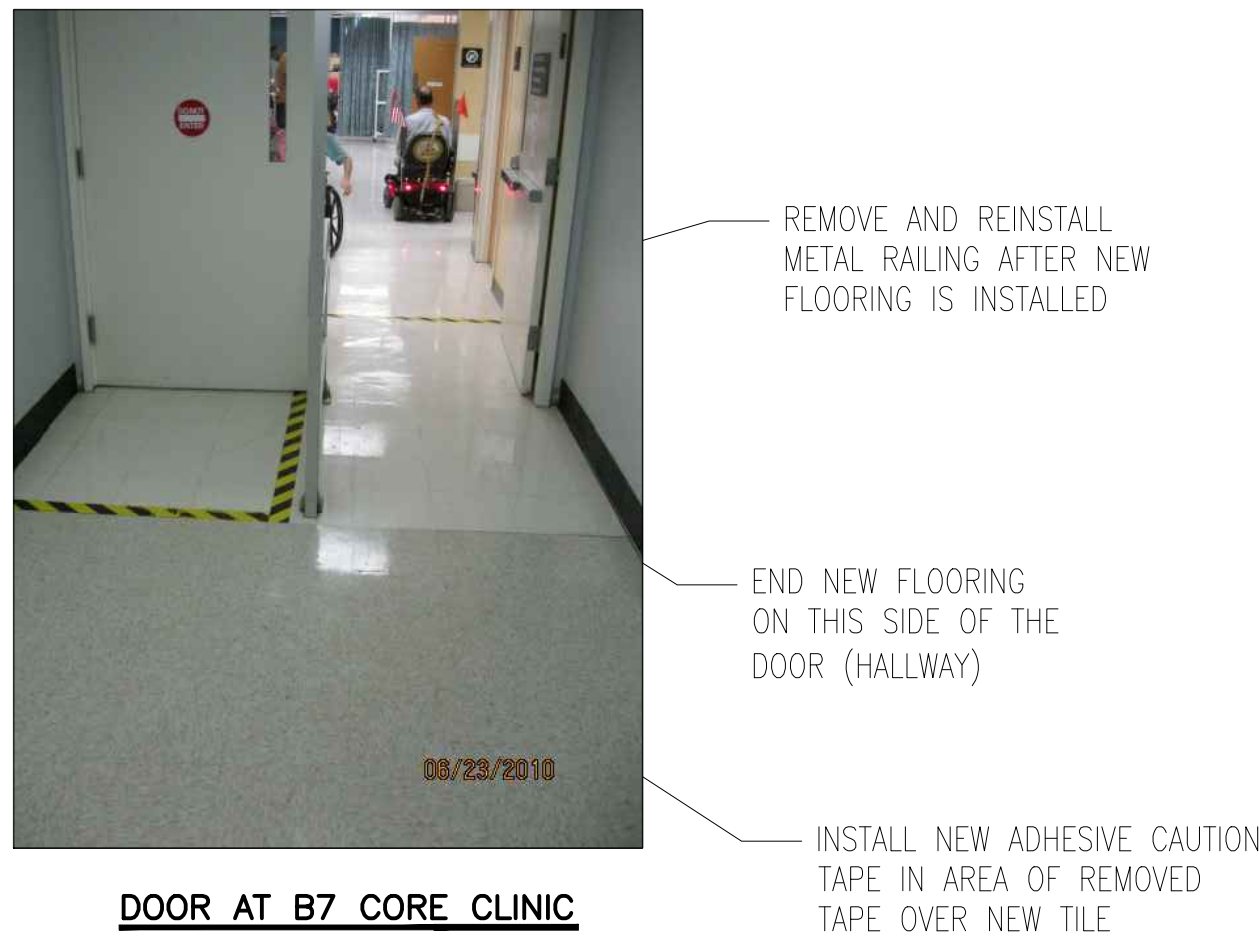
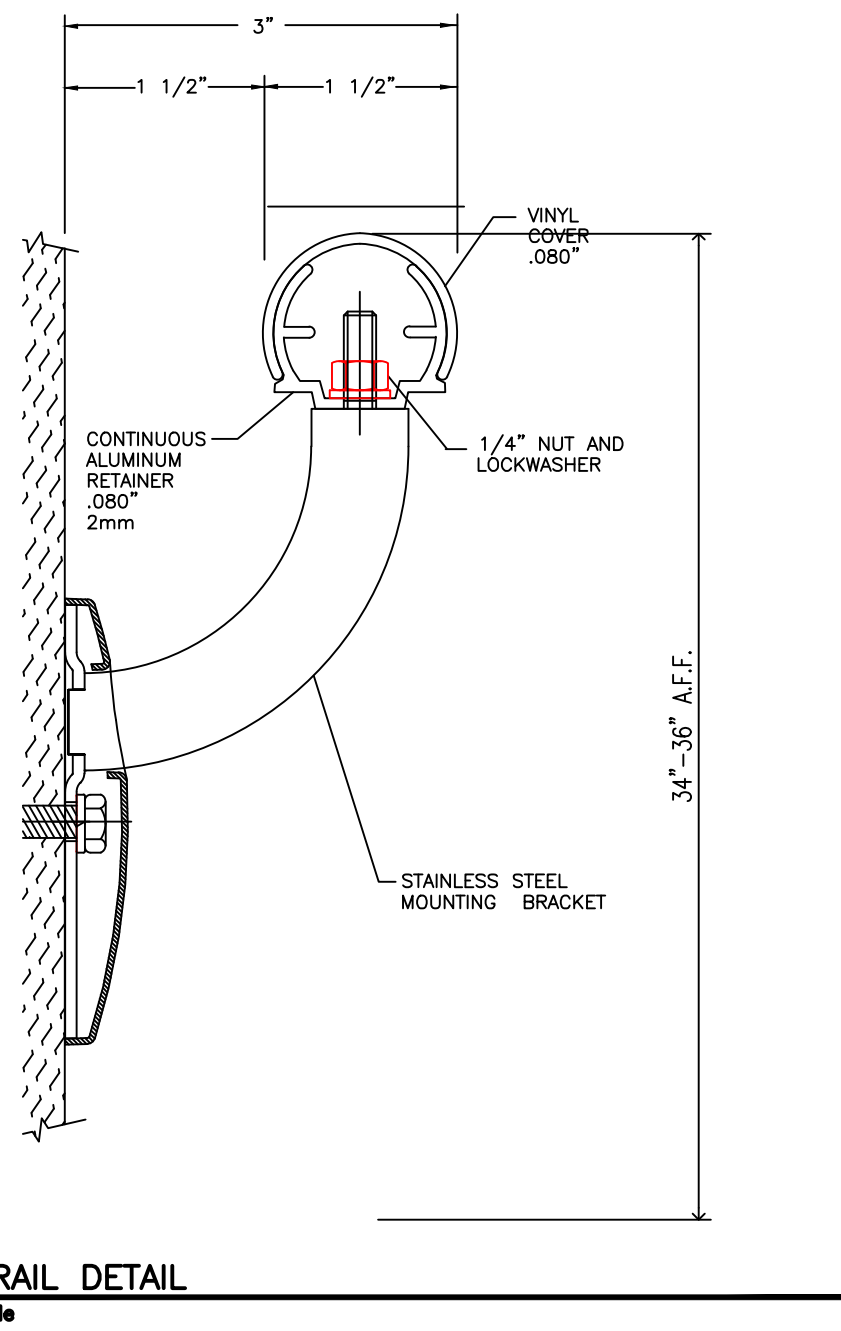
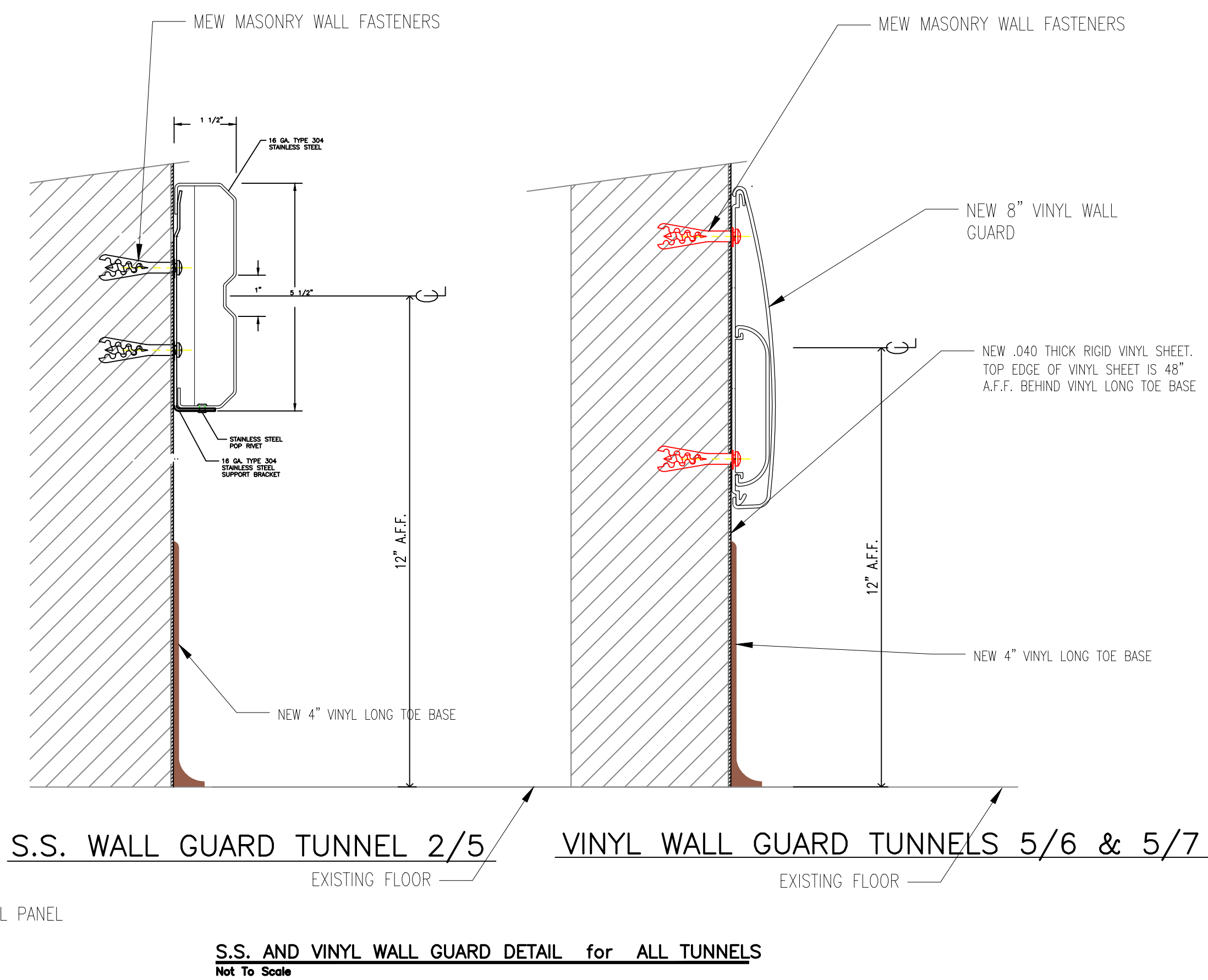
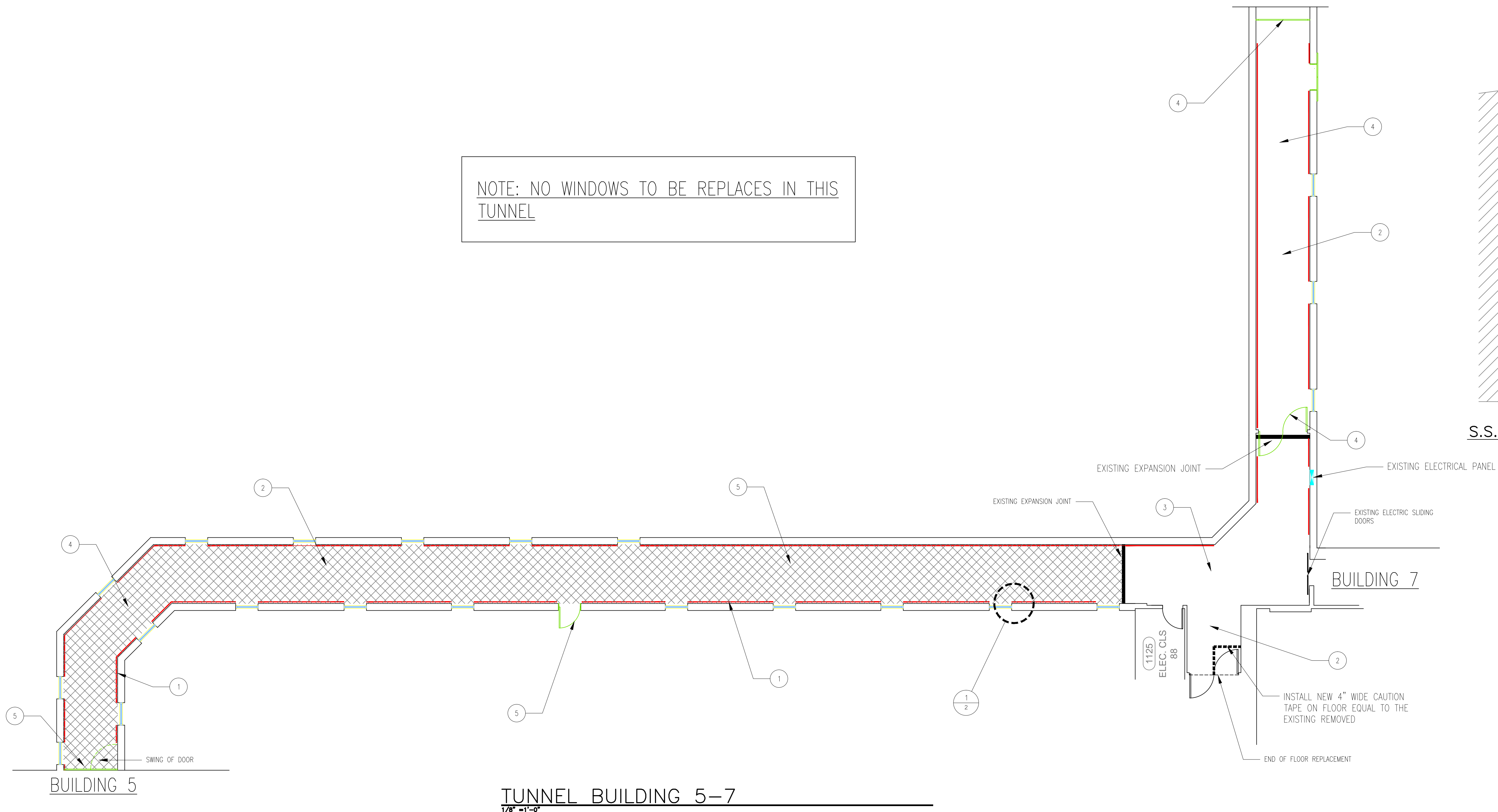


SITEPLAN

Revision		Date	RECOMMEND APPROVAL				Drawing Title NOTES AND DETAILS FOR TUNNEL B5 / 6			Project Title BUILDING 5-6, B 5-7 AND B 2-5 BOTH FLOORS TUNNEL RENOVATION.			Date 3.30.2012			Department of Veterans Affairs		
			REQUESTER		Date	CHIEF OF SERVICE		Date	CHIEF OF STAFF		Date	Building Number TUNNELS B2-5, B5-6, B5-7		Checked			Drawn GLM	Project No. 659-12-2012
			ASSOC. DIR. PATIENT CARE SVC.		Date	ASSOC. DIR. for OPERATIONS		Date	Approved: Safety Manager/M&O Supervisor		Location		W.G.(Bill) Hefner Medical Center 1601 Brenner Ave. Salisbury NC 28144				DRAWING NO. 1 DWG. 1 OF 4	
			APPROVAL BY: MEDICAL CENTER DIRECTOR		Date	Approved:Chief of Facilities Management Svr.												



NOTE: NO WINDOWS TO BE REPLACES IN THIS TUNNEL

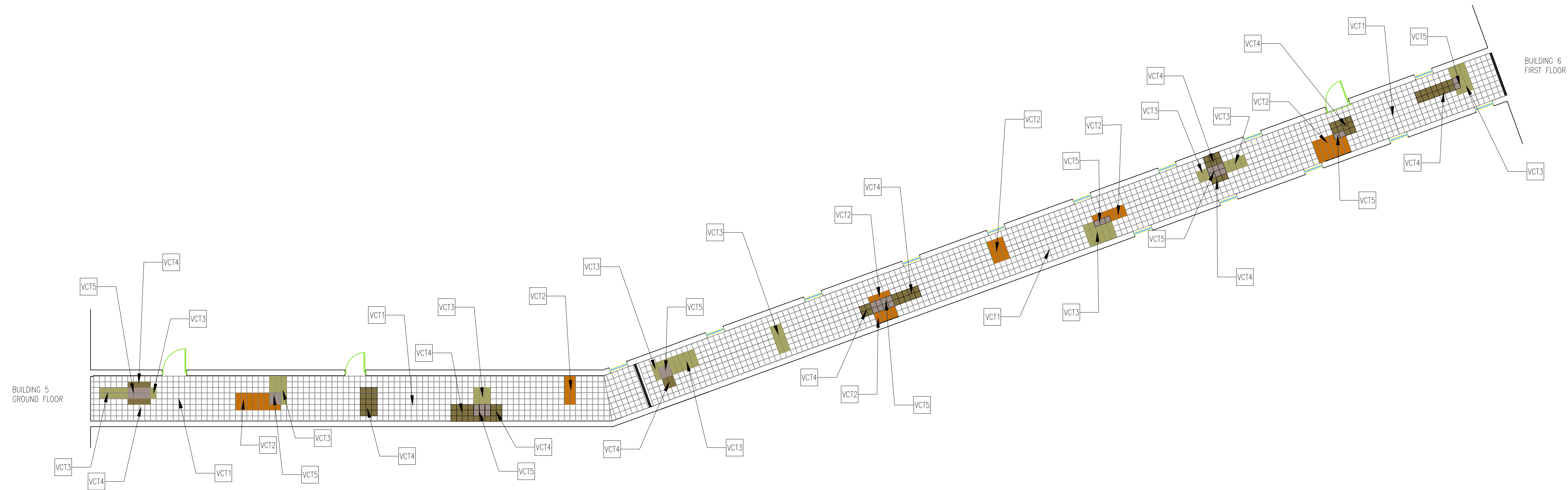


TUNNEL B5 / 7 PROJECT NOTES:

1. REMOVE METAL HANDRAILS AND BRACKETS AND TURN OVER TO VA AND DISPOSE OFF STATION THE VINYL BUMPER GUARD AND PATCH EXISTING BOLT HOLES. INSTALL NEW HANDRAIL, WALL GUARD AND RIGID VINYL WALL PROTECTION AS PER DETAIL ON SHEET 2 AND PER MANUFACTURE REQUIREMENTS.
2. REMOVE ALL VCT AND MASTIC FROM THIS AREA. AREA INDICATED BY HATCHING MASTIC CONTAINS ASBESTOS MATERIAL SO THE PROPER REMOVAL METHOD WILL BE REQUIRED. THIS WORK WILL BE REQUIRED TO BE COMPLETED ON THE WEEKEND.
3. PATCH AND REPAIR ANY DAMAGE TO EXISTING WALLS AND PAINT WALLS AND CEILINGS AS REQUIRED BY SPECIFICATIONS. SEE FINISH SCHEDULE ON SHEET 3 FOR COLORS AND TILE.
4. PAINT EXISTING METAL DOORS AND FRAMES AS PER SPECS.
5. PREP FLOOR AFTER THE MASTIC IS REMOVED FOR THE INSTALLATION OF NEW V.C.T AS PER REQUIREMENTS ON SHEET 3 IN THE FINISH SCHEDULE. INSTALL NEW FLOORING IN ACCORDANCE TO THE MANUFACTURES REQUIREMENTS AND VA SPECS. COMPLETE ONE HALF OF TUNNEL PRIOR TO STARTING THE OTHER SIDE. ALLOW TIME AS REQUIRED BY MANUFACTURE PRIOR TO STARTING REMAINING SIDE.
6. CONTRACTOR SHALL PROVIDE ALL EQUIPMENT AS REQUIRED FOR VENTILATION IN TUNNELS.

																																																																																																																																																																																																																																																																																																																																																																																																																																																																																																																																																																																																																																																																																																																																																																																																																																																																																																																																																																																																																																																																																																																																																																																																																																																																																																																																																																																																																					</
--	--	--	--	--	--	--	--	--	--	--	--	--	--	--	--	--	--	--	--	--	--	--	--	--	--	--	--	--	--	--	--	--	--	--	--	--	--	--	--	--	--	--	--	--	--	--	--	--	--	--	--	--	--	--	--	--	--	--	--	--	--	--	--	--	--	--	--	--	--	--	--	--	--	--	--	--	--	--	--	--	--	--	--	--	--	--	--	--	--	--	--	--	--	--	--	--	--	--	--	--	--	--	--	--	--	--	--	--	--	--	--	--	--	--	--	--	--	--	--	--	--	--	--	--	--	--	--	--	--	--	--	--	--	--	--	--	--	--	--	--	--	--	--	--	--	--	--	--	--	--	--	--	--	--	--	--	--	--	--	--	--	--	--	--	--	--	--	--	--	--	--	--	--	--	--	--	--	--	--	--	--	--	--	--	--	--	--	--	--	--	--	--	--	--	--	--	--	--	--	--	--	--	--	--	--	--	--	--	--	--	--	--	--	--	--	--	--	--	--	--	--	--	--	--	--	--	--	--	--	--	--	--	--	--	--	--	--	--	--	--	--	--	--	--	--	--	--	--	--	--	--	--	--	--	--	--	--	--	--	--	--	--	--	--	--	--	--	--	--	--	--	--	--	--	--	--	--	--	--	--	--	--	--	--	--	--	--	--	--	--	--	--	--	--	--	--	--	--	--	--	--	--	--	--	--	--	--	--	--	--	--	--	--	--	--	--	--	--	--	--	--	--	--	--	--	--	--	--	--	--	--	--	--	--	--	--	--	--	--	--	--	--	--	--	--	--	--	--	--	--	--	--	--	--	--	--	--	--	--	--	--	--	--	--	--	--	--	--	--	--	--	--	--	--	--	--	--	--	--	--	--	--	--	--	--	--	--	--	--	--	--	--	--	--	--	--	--	--	--	--	--	--	--	--	--	--	--	--	--	--	--	--	--	--	--	--	--	--	--	--	--	--	--	--	--	--	--	--	--	--	--	--	--	--	--	--	--	--	--	--	--	--	--	--	--	--	--	--	--	--	--	--	--	--	--	--	--	--	--	--	--	--	--	--	--	--	--	--	--	--	--	--	--	--	--	--	--	--	--	--	--	--	--	--	--	--	--	--	--	--	--	--	--	--	--	--	--	--	--	--	--	--	--	--	--	--	--	--	--	--	--	--	--	--	--	--	--	--	--	--	--	--	--	--	--	--	--	--	--	--	--	--	--	--	--	--	--	--	--	--	--	--	--	--	--	--	--	--	--	--	--	--	--	--	--	--	--	--	--	--	--	--	--	--	--	--	--	--	--	--	--	--	--	--	--	--	--	--	--	--	--	--	--	--	--	--	--	--	--	--	--	--	--	--	--	--	--	--	--	--	--	--	--	--	--	--	--	--	--	--	--	--	--	--	--	--	--	--	--	--	--	--	--	--	--	--	--	--	--	--	--	--	--	--	--	--	--	--	--	--	--	--	--	--	--	--	--	--	--	--	--	--	--	--	--	--	--	--	--	--	--	--	--	--	--	--	--	--	--	--	--	--	--	--	--	--	--	--	--	--	--	--	--	--	--	--	--	--	--	--	--	--	--	--	--	--	--	--	--	--	--	--	--	--	--	--	--	--	--	--	--	--	--	--	--	--	--	--	--	--	--	--	--	--	--	--	--	--	--	--	--	--	--	--	--	--	--	--	--	--	--	--	--	--	--	--	--	--	--	--	--	--	--	--	--	--	--	--	--	--	--	--	--	--	--	--	--	--	--	--	--	--	--	--	--	--	--	--	--	--	--	--	--	--	--	--	--	--	--	--	--	--	--	--	--	--	--	--	--	--	--	--	--	--	--	--	--	--	--	--	--	--	--	--	--	--	--	--	--	--	--	--	--	--	--	--	--	--	--	--	--	--	--	--	--	--	--	--	--	--	--	--	--	--	--	--	--	--	--	--	--	--	--	--	--	--	--	--	--	--	--	--	--	--	--	--	--	--	--	--	--	--	--	--	--	--	--	--	--	--	--	--	--	--	--	--	--	--	--	--	--	--	--	--	--	--	--	--	--	--	--	--	--	--	--	--	--	--	--	--	--	--	--	--	--	--	--	--	--	--	--	--	--	--	--	--	--	--	--	--	--	--	--	--	--	--	--	--	--	--	--	--	--	--	--	--	--	--	--	--	--	--	--	--	--	--	--	--	--	--	--	--	--	--	--	--	--	--	--	--	--	--	--	--	--	--	--	--	--	--	--	--	--	--	--	--	--	--	--	--	--	--	--	--	--	--	--	--	--	--	--	--	--	--	--	--	--	--	--	--	--	--	--	--	--	--	--	--	--	--	--	--	--	--	--	--	--	--	--	--	--	--	--	--	--	--	--	--	--	--	--	--	--	--	--	--	--	--	--	--	--	--	--	--	--	--	--	--	--	--	--	--	--	--	--	--	--	--	--	--	--	--	--	--	--	--	--	--	--	--	--	--	--	--	--	--	--	--	--	--	--	--	--	--	--	--	--	--	--	--	--	--	--	--	--	--	--	--	--	--	--	--	--	--	--	--	--	--	--	--	--	--	--	--	--	--	--	--	--	--	--	--	--	--	--	--	--	--	--	--	--	--	--	--	--	--	--	--	--	--	--	--	--	--	--	--	--	--	--	--	--	--	--	--	--	--	--	--	--	--	--	--	--	--	--	--	--	--	--	--	--	--	--	--	--	--	--	--	--	--	--	--	--	--	--	--	--	--	--	--	--	--	--	--	--	--	--	--	--	--	--	--	--	--	--	--	--	--	--	--	--	--	--	--	--	--	--	--	--	--	--	--	--	--	--	--	--	--	--	--	--	--	--	--	--	--	--	--	--	--	--	--	--	--	--	--	--	--	--	--	--	--	--	--	--	--	--	--	--	--	--	--	--	--	--	--	--	--	--	--	--	--	--	--	--	--	--	--	--	--	--	--	--	--	--	--	--	--	--	--	--	--	--	--	--	--	--	--	--	--	--	--	--	--	--	--	--	--	--	--	--	--	--	--	--	--	--	--	--	--	--	--	--	--	--	--	--	--	--	--	--	--	--	--	--	--	--	--	--	--	--	--	--	--	--	--	--	--	--	--	--	--	--	--	----



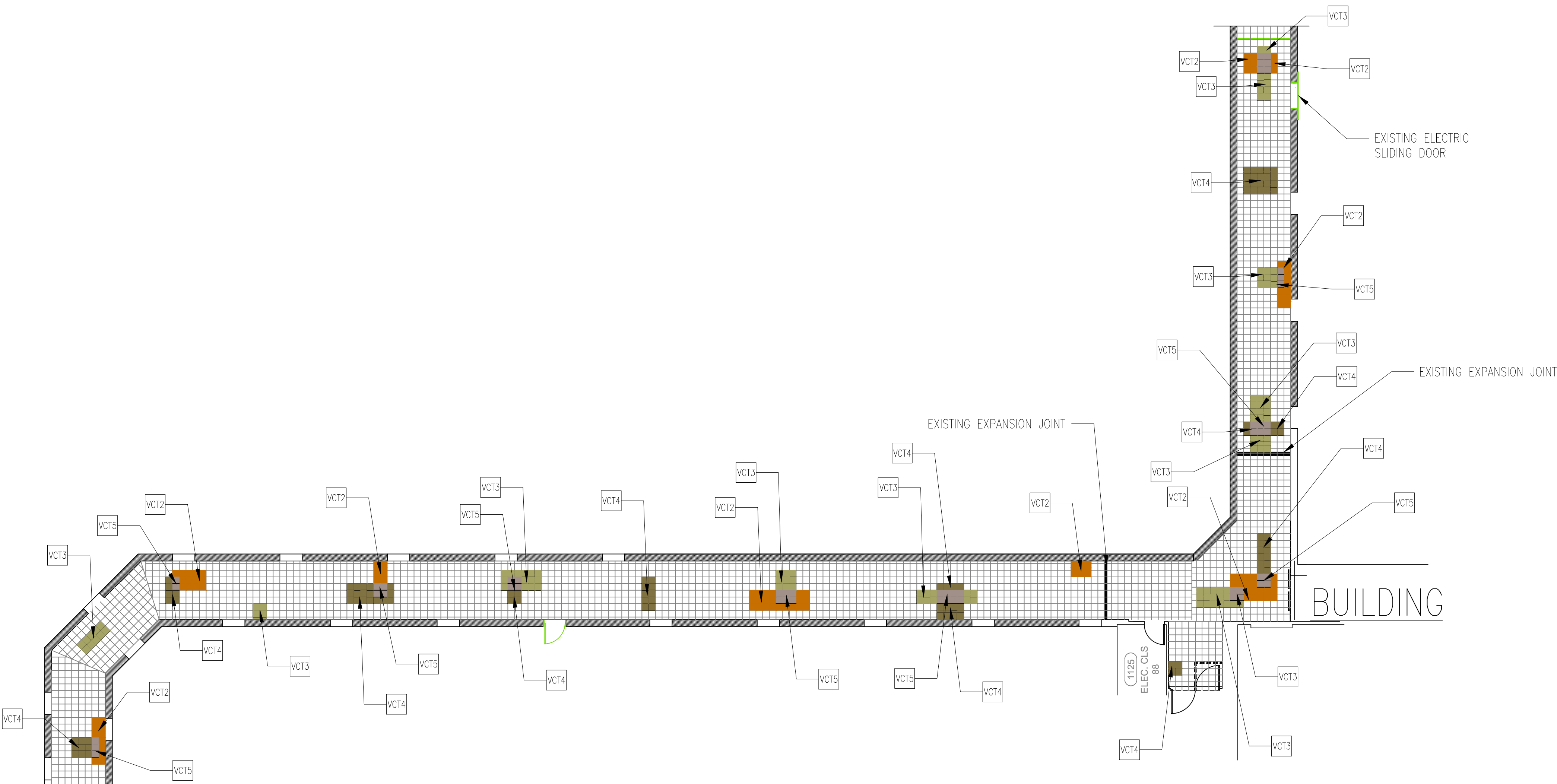


TILE LAYOUT FOR TUNNEL B5 TO B6

3/32" = 1'-0"

TUNNEL 2-5 PROJECT NOTES:

1. REMOVE METAL HANDRAILS, VINYL BUMPER GUARD AND TURN OVER ALUMINUM HANDRAILS AND BRACKETS TO THE VA AND DISPOSE VINYL BUMPER GUARDS OFF VA PROPERTY. PATCH EXISTING HOLES AND INSTALL NEW VINYL HANDRAIL, WALL GUARD AND RIGID VINYL WALL PROTECTION AS PER DETAILS ON SHEET 2 AND PER MANUFACTURE REQUIREMENTS.
2. REMOVE ALL VCT AND MASTIC FROM THIS AREA. THE MASTIC IN THESE FLOORS CONTAIN ASBESTOS MATERIAL AND PROPER REMOVAL MUST BE USED.
3. REMOVE ALL EXISTING WINDOWS AND INSTALL NEW ALUMINUM WINDOWS. REMOVE THE ENTIRE METAL WINDOW FRAME FROM OPENING. SEE SHEET 4 OF 4 FOR THE DETAILS OF NEW WINDOWS.
4. PATCH AND REPAIR ANY DAMAGE TO EXISTING WALLS AND PAINT WALLS AND CEILINGS AS REQUIRED BY SPECIFICATIONS. SEE FINISH SCHEDULE ON SHEET 3 FOR COLOR AND TILE.
5. PAINT EXISTING METAL DOOR AND FRAME AS PER SPECS REQUIRE. SEE PHOTOS OF DOORS FOR ADDITIONAL INFORMATION AND REQUIREMENTS.
6. PREP FLOOR AFTER EXISTING TILE AND MASTIC ARE REMOVED FOR THE INSTALLATION OF NEW V.C.T AS PER REQUIREMENTS ON SHEET 3 IN THE FINISH SCHEDULE. INSTALL FLOORING IN ACCORDANCE TO THE MANUFACTURES REQUIREMENTS AND VA SPECS. COMPLETE ONE HALF OF TUNNEL PRIOR TO STARTING THE OTHER SIDE. PROVIDE AND INSTALL 4" LONG TOE VINYL BASE, CHIP EXISTING COVE BASE ALONG WALL AND INSTALL GROUT TO LEVEL FLOOR PRIOR TO INSTALLING FLOORING MATERIAL. SEE TILE FLOORING LAYOUT SHEET 3.



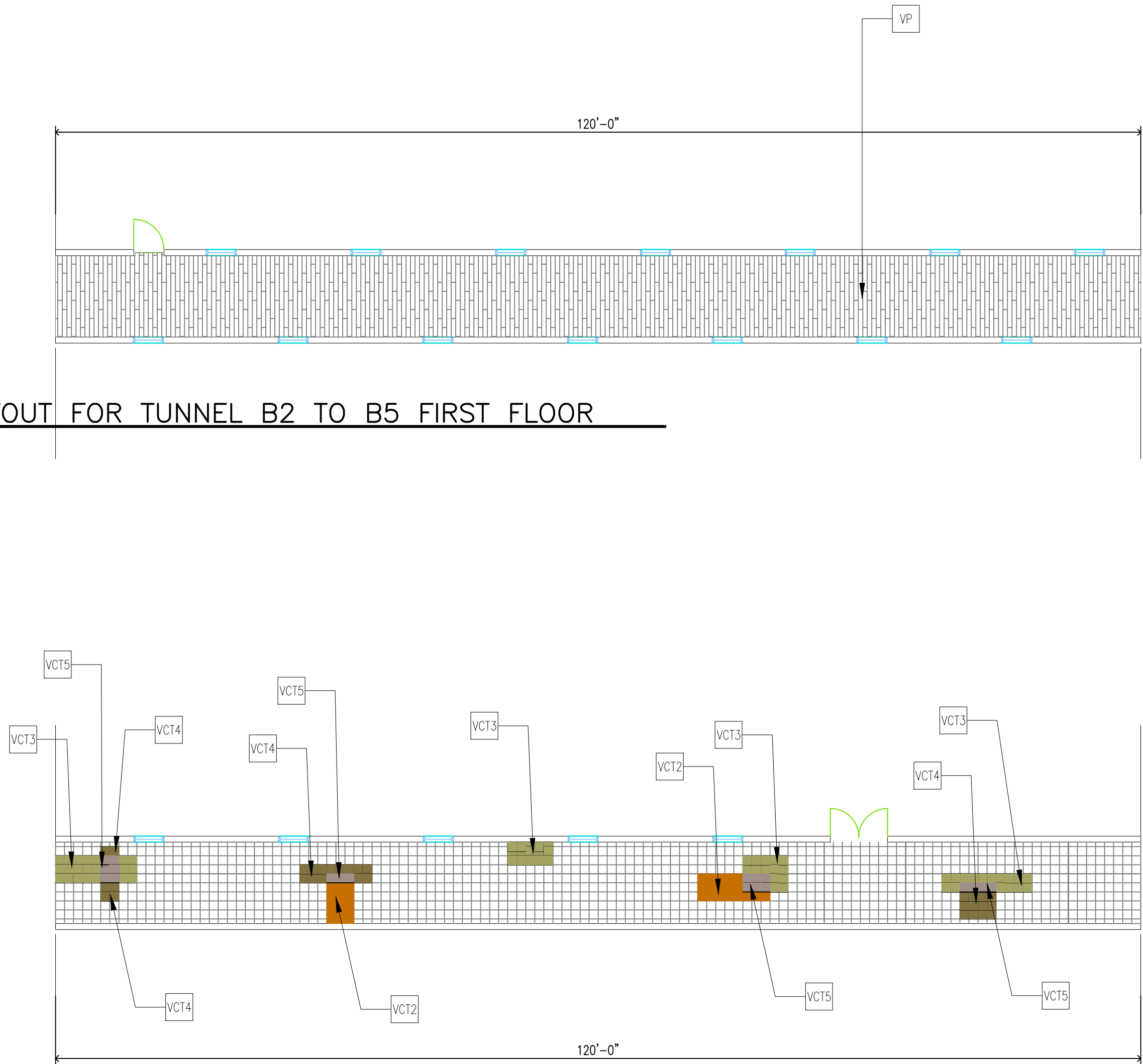
BUILDING 5

TILE LAYOUT FOR TUNNEL B5 TO B7

3/32" = 1'-0"

TILE LAYOUT FOR TUNNEL B2 TO B5 FIRST FLOOR

3/32" = 1'-0"



TILE LAYOUT FOR TUNNEL B2 TO B5 GROUND FLOOR

3/32" = 1'-0"

TUNNEL PROJECT FINISH SCHEDULE									
Room Name	Floor	WALLS							Notes
		Base	North	East	South	West	door frame	handrail and crash rail	
Building 2 1st floor	VP	B1	P1	P1	P1	P1	P5	HR	note 1
Tunnel from 2 to 5	VCT1,2,3,4,5	B2	WP/P2	WP/P2	WP/P2	WP/P2	P5	HR/CR1	note 2&3
Tunnel from 5 to 6	VCT1,2,3,4,5	B2	WP/P3	WP/P3	WP/P3	WP/P3	P5	HR/CR2	note 2&3
Tunnel to 7	VCT1,2,3,4,5	B2	WP/P4	WP/P4	WP/P4	WP/P4	P5	HR/CR1	note 2&3

NOTES:

Note 1: Run planks same direction as in front of Agent cashiers entrance

Note 2: See drawing for floor pattern

Note 3: Install instructions for WVP are very specific please follow manufactures recommendations

Note 4: Chip all concrete cove base from all tunnels and grout to level all tunnel floors prior to install flooring materials.

TUNNEL PROJECT LEGEND			
Item	Code	Manufacture/Style	Mfr.'s Color Name/#
Paint	P1	ICI 1st floor building 2 walkway	Stonington Beige A1845
	P2	ICI ground floor bldg 2 tunnel	Egg Nog L0716
	P3	Sherwin Williams bldg 5 to 6 tunnel	Pearl Gray SW0052
	P4	Sherwin Williams bldg 7 tunnel	Crewel Tan SW0011
	P5	Sherwin Williams trim color doors/frames	Poised Taupe SW6039
Handrail	HR	InPro Corporation #900W with 909SS mounting brackets, returns 902W in natural maple 0531	Natural Maple 0531
Crash rail	CR1	InPro Corporation #1800	Sand Dune 0278 pebblette finish
	CR2	InPro Corporation #31SS stainless steel	stainless steel 5.5" high
Wall protection	WP	IPC rigid vinyl sheet .040 x 48" x 96" run horizontal	Sand Dune 0278 pebblette
top cap		IPC top cap 407-0278	Sand Dune 0278
vertical divider bars		use vertical divider bars between sheets of wall protection down seams	Sand Dune 0278
Base	B1	Johnsonite long toe rubber cove base	Black #40 1st fl bldg 2 walkway
	B2	Johnsonite long toe rubber cove base	Fawn #80
Luxury Vinyl Plank	VP	Armico 6"x36" Square Edge with urethane coat	Classic Walnut W761
VCT	VCT1	Mannington Essentials (1/4 turn)	Wheat 123 (field color)
	VCT2	Mannington Essentials (run monolithic)	Bronze 246 (accent rust)
	VCT3	Mannington Essentials (run monolithic)	Khaki Beige 163 (accent light sage)
	VCT4	Mannington Essentials (run monolithic)	Otter Brown 173 (accent light brown)
	VCT5	Mannington Essentials (run monolithic)	Brownstone 109 (accent plum gray)

Revision		Date	RECOMMEND APPROVAL				Drawing Title		Project Title		Date	<div>Office of Facilities</div> <div>Department of Veterans Affairs</div>		
			REQUESTER	Date	CHIEF OF SERVICE	CHIEF OF STAFF	Date	TILE LAYOUT FOR TUNNEL AND FINISH SCHEDULE		BUILDING 5-6, B 5-7 AND B 2-5 BOTH FLOORS TUNNEL RENOVATION.		3.30.2012		
			ASSOC. DIR. PATIENT CARE SVC.	Date	ASSOC. DIR. for OPERATIONS		Date	Approved: Safety Manager/M&O Supervisor		Building Number	Checked	Drawn	GLM	
			APPROVAL BY:				Date	Approved:Chief of Facilities Management Svr.		TUNNELS B2-5,B5-6,B5-7				
			MEDICAL CENTER DIRECTOR							Location	W.G.(Bill) Hefner Medical Center 1601 Brenner Ave. Salisbury NC 28144		DRAWING NO.	
													3	
													DWG.	3 OF 4



CONTRACTOR SHALL VERIFY ALL WINDOW DIMENSIONS AND QUANTITIES.

FINISHES INSIDE TUNNELS MAY VARY. WINDOW CONTRACTOR SHALL BE RESPONSIBLE FOR VERIFICATION OF ALL ROOM FINISHES AND REPAIR OF ALL SURFACES RESULTING FROM THE REPLACEMENT OPERATIONS. A SITE SURVEY WILL BE CONDUCTED AT THE BEGINNING OF THE PROJECT AND ANOTHER SURVEY WILL BE CONDUCTED AFTER THE WINDOW CONTRACTOR SHALL BE NOTIFIED OF ANY CONDITION CHANGES AFTER THE SITE SURVEY.

ANY DEBRIS INSIDE ROOMS, ON THE GROUNDS, SIDEWALKS, ETC., SHALL BE REMOVED AT THE END OF EACH DAY. COORDINATE WITH COTR FOR POSSIBLE DUMPSITE LOCATION. ALL WORK SHALL BE ACCOMPLISHED DURING NORMAL DUTY HOURS 8 AM TO 4:30 PM OR AS APPROVED BY COTR AND CONTRACTING OFFICER.

ALL SAFETY REGULATIONS OF THIS STATION SHALL BE OBSERVED.

SALISBURY VAMC WILL NOT PROVIDE STORAGE FOR WINDOWS OR EQUIPMENT. THE WINDOW CONTRACTOR SHALL PROVIDE TRAILER OR OTHER SUITABLE STORAGE FACILITY FOR WINDOWS. STORAGE TRAILER MAY BE PARKED IN SPACE AVAILABLE BEHIND THE WAREHOUSE OR AS APPROVED BY COTR OR CONTRACTING OFFICER.

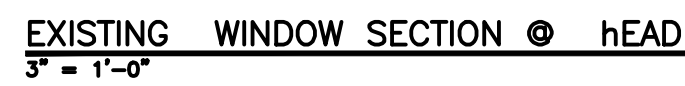
D2 WINDOWS IN THE TUNNELS WILL NOT BE EQUIPPED WITH BLINDS.

ALL WINDOW DETAILS ARE BASED ON EFCO SERIES 450 INSURING CASEMENT HIGH PERFORMANCE THERMAL WINDOWS. THIS WINDOW SELECTION IS USED AS THE DESIGN BASIS AND IS NOT INTENDED TO LIMIT COMPETITION. WINDOW MANUFACTURER SHALL BE EQUAL OR BETTER THAN THE SPECIFICATION REQUIREMENTS.

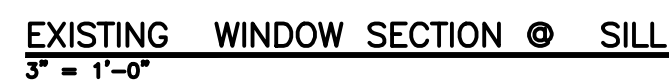
FINISH SHALL BE WHITE ARCHITECTURAL COATING AS SPECIFIED.

PROVIDE ALUMINUM BUTT HINGES AT THE CASEMENT SASH. EQUIP EACH WINDOW WITH 3 JINCH TAMPERPROOF WHITE BRONZE A/C LOCKS WHITE BRONZE SASH PULL HANDLE AND KEY RELEASE LIMIT OPENING ARMS.

GLAZING SHALL BE 1" INSULATED EXTERIOR WITH 1/4" CLEAR TEMPT AT OUTSIDE, 1/4" TINTED TEMPT AT INSIDE WITH LOW EMISSIVITY PYROLYSIS COATING HAVING 0.15 AND ARGON FILLED AIR SPACE. SEE ALSO SPECIFICATIONS. INTERIOR TAKE-OUT PANEL SHALL BE 1/4" CLEAR TEMPTED GLASS.



- A. REMOVE EXISTING LIGHT FIXTURES FROM CEILING AND INSTALL NEW LIGHT FIXTURES BY LUMAX SERIES "CW" OR EQUAL. FIXTURE IS TO HAVE TWO (2) TUBES PER FIXTURE. LAMPS ARE TO BE T-8 LIGHTS WITH DIMMING BALLAST. INSTALL A OCC. SENSOR FOR DIMMING LIGHTS FIXTURES AUTOMATICALLY WHEN FULL LIGHT IS NOT NEEDED. THE NEW LIGHTS INTO EXISTING GROUDES.
- B. REMOVE EXISTING A.C.T. AND GRID AND REPLACE IT WITH NEW 2' x 2' A.C.T. AND GRID SYSTEM AT THE SAME ELEVATION. INSTALL NEW 2' x 4' LED LIGHT FIXTURES BY COLUMBIA LIGHTING MODEL "EPOC" OR EQUAL. THE NEW LED LIGHTS ARE TO HAVE 4400 LUMENS AND 4100K COLOR TEMP. INSTALL STYLE LEPC MODEL 24 RECESSED AND ONE SURFACE MOUNTED LEPC MODEL 14.
- C. REPLACE EXISTING SUPPLY AND RETURN GRILLS MATCHING EXISTING SIZE.



--

Drawing Title
NOTES AND DETAILS FOR NEW WINDOWS (B2-5 & B5-6 TUNNELS) AND A.C.T AND LIGHTS IN TUNNEL B2-5 (BOTH FLOORS)
Approved: Safety Manager/M&O Supervisor
Approved: Chief of Facilities Management Svr.

Date  
3.30.2012

Project No.  
659-12-2012

DRAWING NO.  
4

DWG. 4 OF 4

