

# UPGRADE TOILET ROOMS

## BUILDING 92

PROJECT NO. 528A6-11-612

V.A. MEDICAL CENTER  
BATH, NEW YORK 14810

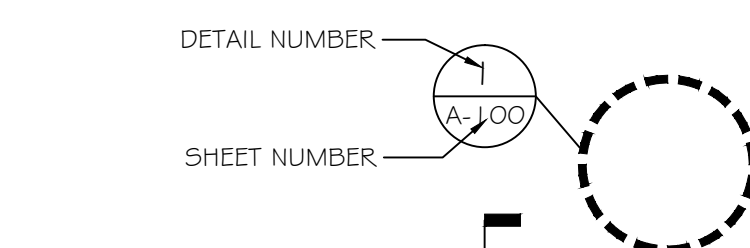
### LIST OF DRAWINGS

DRAWING NO.	SYMBOL	SHEET	TITLE
VAMC-528A6-1731	T-1	1 OF 3	COVER SHEET
VAMC-528A6-1731	A-1	2 OF 3	FLOOR PLANS & GENERAL NOTES
VAMC-528A6-1731	A-2	3 OF 3	PLANS, DETAILS & SCHEDULES

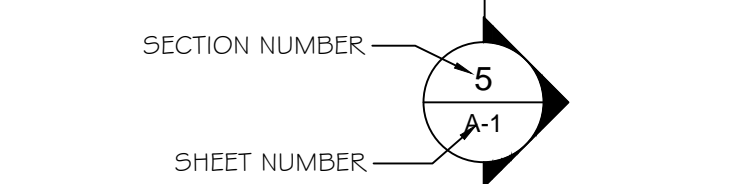
### ABBREVIATIONS AND SYMBOLS

AB	ANCHOR BOLT	EA	EACH	MAT	MATERIAL	T	TOILET
AC	AIR CONDITIONING	EL	ELEVATION	MAX	MAXIMUM	TV	TOP OF
ACT	ACOUSTICAL CEILING TILE	ELEC	ELECTRIC	MECH	MECHANICAL	TH	THICK/ THICKNESS
ADDL	ADDITIONAL	ELEV	ELEVATION	MFR	MANUFACTURER	T4G	TONGUE & GROOVE
ADJ	ADJUSTABLE	EQ	EQUAL	MH	MAN HOLE	TOP	TOP OF FOOTING
AFP	ABOVE FINISH FLOOR	EW	EACH WAY	MIN	MINIMUM	TOS	TOP OF STEEL
ALT	ALTERNATE	EXT	EXTERIOR	MO	MASONRY OPENING	TOW	TOP OF WALL
AL	ALUMINUM	EXG	EXISTING	MTL	METAL	TYP	TYPICAL
ARCH	ARCHITECTURAL						
ASPH	ASPHALT	FBGL	FIBERGLASS	NIC	NOT IN CONTRACT		
		FD	FLOOR DRAIN	NTS	NOT TO SCALE	UNO	UNLESS NOTED OTHERWISE
BD	BOTTOM of	FFE	FINISH FLOOR ELEVATION				
BL	BOARD	FIN	FIN	OC	ON CENTER	VB	VAPOR BARRIER
BLD	BUILDING LINE	FLR	FLOOR	OH	OVERHEAD DOOR	VCT	VINYL COMPOSITION TILE
BLDG	BUILDING	FNDN	FOUNDATION	OPNG	OPENING	VERT	VERTICAL
BLK	BLOCK	FP	FIREPLACE				
BLKG	BLOCKING	FR	FAMILY ROOM	PL	PLATE		
BP	BEARING PLATE	FTG	FOOTING	PSF	POUNDS PER SQUARE FOOT	W	WIDE/ WIDTH
BR	BEDROOM			PSI	POUNDS PER SQUARE INCH	W/	WITH
BSMT	BASEMENT	GC	GENERAL CONTRACTOR	PT (D)	PAINT (LED)	WC	WATER CLOSET
BTWN	BETWEEN	GL	GLASS	PWD	PLYWOOD	WD	WOOD
BRG	BEARING	GN	GLUE and NAIL			WHD	WINDOW
		GWB	GYPSUM WALL BOARD	RA	RETURN AIR	WWM	WELDED WIRE MESH
		GP	GYPSUM	RD	ROOF DRAIN		
CB	CATCH BASIN			REF	REFERENCE		EXISTING WALLS
CC	CENTER TO CENTER	H	HIGH	REIN	REINFORCING		
CEM	CEMENT	HCR	HOLLOW CORE	REQD	REQUIRED		NEW PARTITIONS
CG	CORNER GUARD	HDR	HEADER	RH	RIGHT HAND		
CJ	CONSTRUCTION JOINT or CONTROL JOINT	HWD	HARDWARE	RM	ROOM		ITEMS TO BE DEMOLISHED
CLG	CEILING	HGT	HEIGHT	RO	ROUGH OPENING		
CMU	CONCRETE MASONRY UNIT	HO	HOLLOW	R/S	ROUGH SAWN		
COL	COLUMN	HM	HOLLOW METAL				
COMP	COMPACTED	HORZ	HORIZONTAL				
CONC	CONCRETE	H.P.	HIGH POINT	SC	SOLID CORE		
CONST	CONSTRUCTION	H.F.	HANDRAIL	SCWD	SOLID CORE WOOD DOOR		
CONT	CONTINUOUS	HW	HOT WATER	SD	SMOKE DETECTOR		
COORD	COORDINATE			SF	SQUARE FEET		
CPT	CARPET	INS	INSULATION	SFLR	SUB-FLOOR		
CRS	COURSE	INT	INTERIOR	SIM	SIMILAR		
CT	CERAMIC TILE			SL	SLOPE		
		JAN.	JANITORIAL	SOG	SLAB-ON-GRADE		
D	DEPT/ DEPTH	JST	JOIST	SPEC	SPECIFICATIONS		
DBL	DOUBLE	JT	JOINT	STL	STEEL		
DET	DETAIL			STR	STRUCTURAL		
DF	DOUGLAS FIR	K	KITCHEN	SV	SHEET VINYL FLOORING		
DIA	DIAMETER						
DIM	DIMENSION	LF	LINEAR FEET				
DTL	DETAIL	LH	LEFT HAND				
DISHW	DISHWASHER	LOC	LOCATION				
DWG	DRAWING	LVL	LAMINATED VENEER LUMBER				

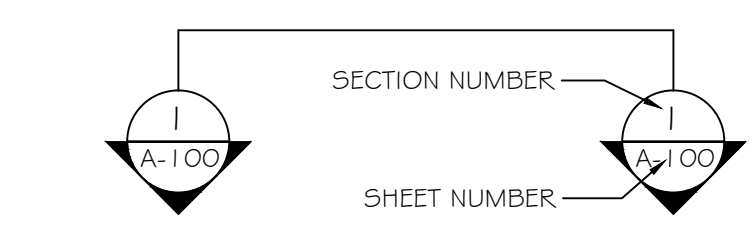
#### DETAIL MARKER



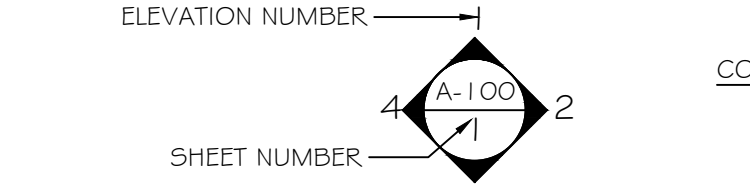
#### SECTION MARKER



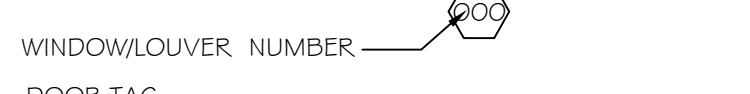
#### BUILDING SECTION MARKER



#### INTERIOR ELEVATION MARKER



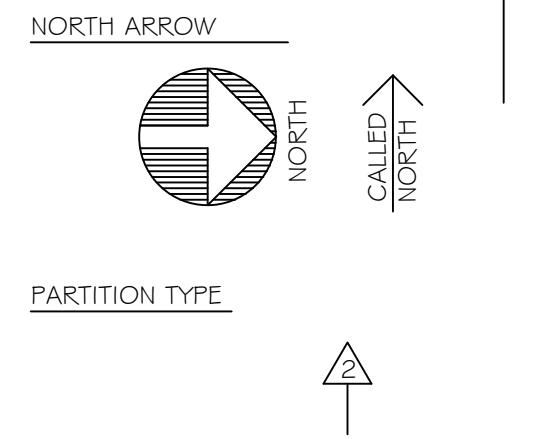
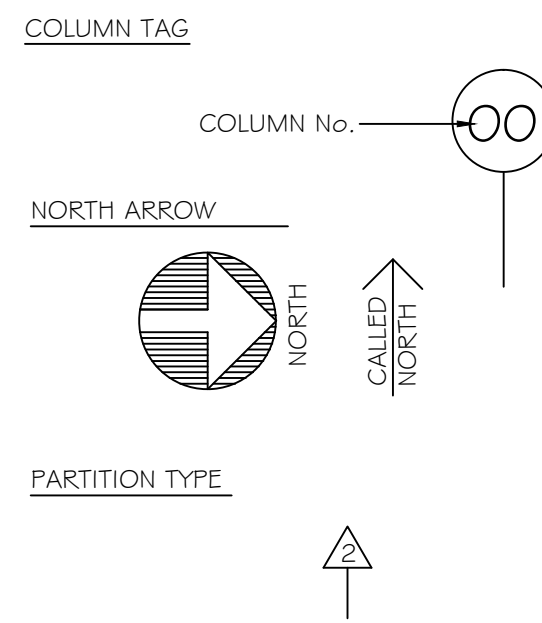
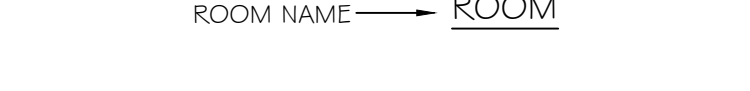
#### WINDOW AND LOUVER TAG



#### DOOR TAG

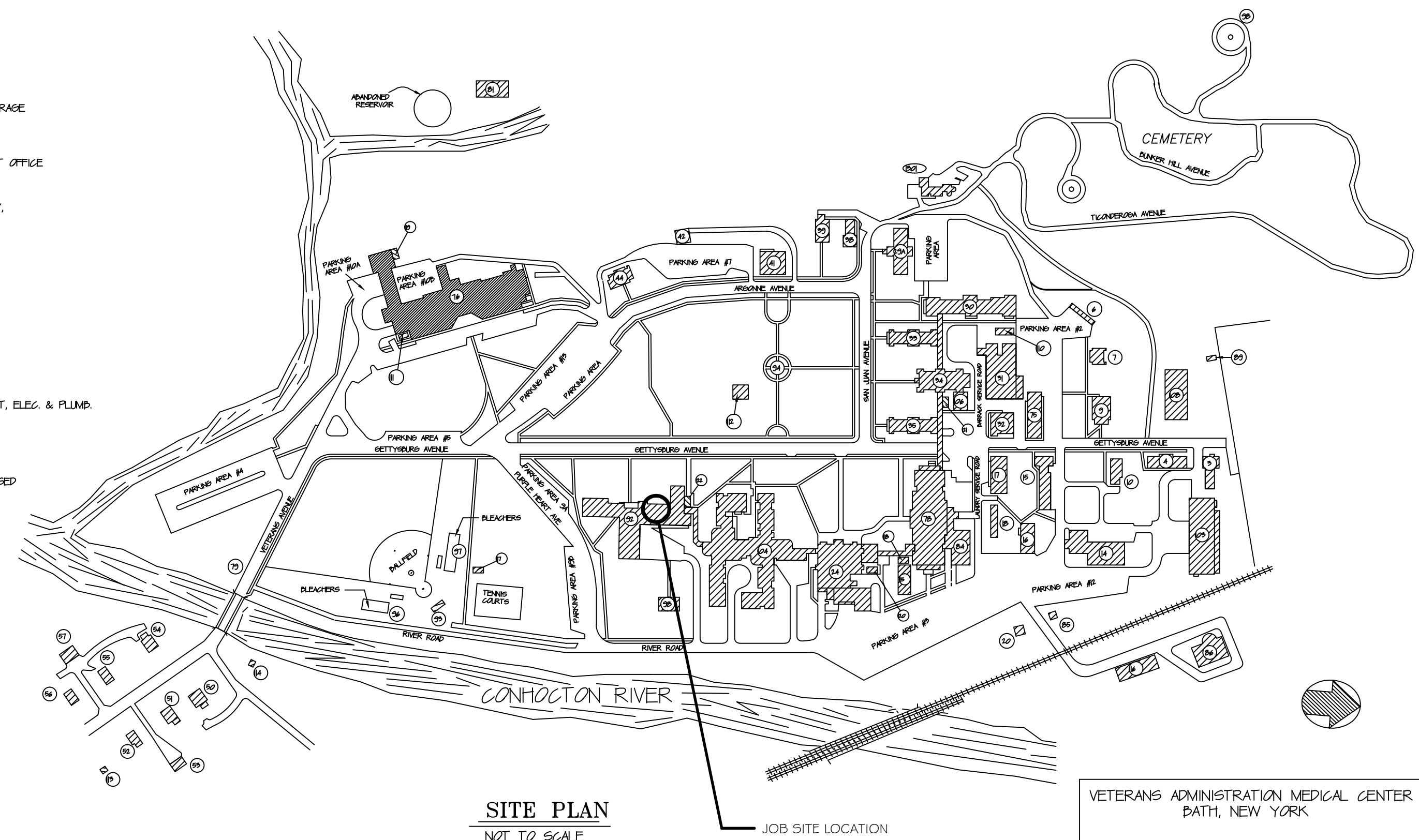


#### ROOM DESIGNATION



### BUILDING SCHEDULE

2	EQUIPMENT STORAGE
4	LUMBER SHED
5	TEMPORARY HOUSING
6	ENGINEERING OFFICE
7	QUARTERS
8	FIRE DEPARTMENT & GARAGE
9	GARAGES, GEN. REPAIR, MASONRY STORAGE
10	CARPENTER SHOP
11	LABORATORY
12	GUEST UNION
13	REVER - PUMP HOUSE
14	MAIN DINING ROOM & KITCHEN & POST OFFICE
15	BAR
16	SECTION 4 - ADMINISTRATION BUILDING
17	BOILER PLANT
18	RESEARCH PSYCHOLOGY, PSYCHIATRY, SOCIAL WORK SERVICE
19	SECTION 5
20	SECTION 4 - DERMATOLOGY
21	SECTION 5 - JEWELRY
22	SECTION 5 - JEWELRY
23	SECTION 5 - JEWELRY
24	SECTION 5 - JEWELRY
25	SECTION 5 - JEWELRY
26	SECTION 5 - JEWELRY
27	SECTION 5 - JEWELRY
28	SECTION 5 - JEWELRY
29	SECTION 5 - JEWELRY
30	SECTION 5 - JEWELRY
31	SECTION 5 - JEWELRY
32	SECTION 5 - JEWELRY
33	SECTION 5 - JEWELRY
34	SECTION 5 - JEWELRY
35	SECTION 5 - JEWELRY
36	SECTION 5 - JEWELRY
37	SECTION 5 - JEWELRY
38	SECTION 5 - JEWELRY
39	SECTION 5 - JEWELRY
40	SECTION 5 - JEWELRY
41	SECTION 5 - JEWELRY
42	SECTION 5 - JEWELRY
43	SECTION 5 - JEWELRY
44	SECTION 5 - JEWELRY
45	SECTION 5 - JEWELRY
46	SECTION 5 - JEWELRY
47	SECTION 5 - JEWELRY
48	SECTION 5 - JEWELRY
49	SECTION 5 - JEWELRY
50	SECTION 5 - JEWELRY
51	SECTION 5 - JEWELRY
52	SECTION 5 - JEWELRY
53	SECTION 5 - JEWELRY
54	SECTION 5 - JEWELRY
55	SECTION 5 - JEWELRY
56	SECTION 5 - JEWELRY
57	SECTION 5 - JEWELRY
58	SECTION 5 - JEWELRY
59	SECTION 5 - JEWELRY
60	SECTION 5 - JEWELRY
61	SECTION 5 - JEWELRY
62	SECTION 5 - JEWELRY
63	SECTION 5 - JEWELRY
64	SECTION 5 - JEWELRY
65	SECTION 5 - JEWELRY
66	SECTION 5 - JEWELRY
67	SECTION 5 - JEWELRY
68	SECTION 5 - JEWELRY
69	SECTION 5 - JEWELRY
70	SECTION 5 - JEWELRY
71	SECTION 5 - JEWELRY
72	SECTION 5 - JEWELRY
73	SECTION 5 - JEWELRY
74	SECTION 5 - JEWELRY
75	SECTION 5 - JEWELRY
76	SECTION 5 - JEWELRY
77	SECTION 5 - JEWELRY
78	SECTION 5 - JEWELRY
79	SECTION 5 - JEWELRY
80	SECTION 5 - JEWELRY
81	SECTION 5 - JEWELRY
82	SECTION 5 - JEWELRY
83	SECTION 5 - JEWELRY
84	SECTION 5 - JEWELRY
85	SECTION 5 - JEWELRY
86	SECTION 5 - JEWELRY
87	SECTION 5 - JEWELRY
88	SECTION 5 - JEWELRY
89	SECTION 5 - JEWELRY
90	SECTION 5 - JEWELRY
91	SECTION 5 - JEWELRY
92	SECTION 5 - JEWELRY
93	SECTION 5 - JEWELRY
94	SECTION 5 - JEWELRY
95	SECTION 5 - JEWELRY
96	SECTION 5 - JEWELRY
97	SECTION 5 - JEWELRY
98	SECTION 5 - JEWELRY
99	SECTION 5 - JEWELRY
100	SECTION 5 - JEWELRY



Revisions	Date	ALL WORK TO BE IN ACCORDANCE WITH N.F.P.A., NATIONAL, STATE AND CITY CODES & O.S.H.A.	Approved: A.F.G.E. Date	Approved: Fire Chief Date	Approved: Energy Engineer Date	Drawing Title COVER SHEET	Project Title UPGRADE TOILET ROOMS BUILDING 92	Date 01/29/2012
		Approved: Logistics Manager Date	Approved: Interior Designer Date	Approved: Safety Officer Date	Approved: M&R Foreman Date	Drawing File Number:	Building No. 92	Project No. 528A6-11-612
		Approved: Infection Control Mgr. Date	Approved: Info. Sys. Date	Approved: GEMS Coordinator Date		Approved: Engineering Project Manager Date	Checked JAY	Drawn JHH
		Approved: Chief Security Date	Approved: Associate Director Date	Approved: MVAC Careline Manager Date		Approved: Medical Center Director Date	Location BATH, NEW YORK	DRAWING NO. VAMC-528A6-1731 T-1 Dwg. 1 Of 3