

FLOOR PLAN
1/4" = 1' - 0"

ROOM FINISH SCHEDULE

NO.	ROOM NAME	FLOOR	TRIM	WALLS	CEILING	REMARKS
1000	LOBBY	WOOD	WOOD	DRYWALL-PAINT	WOOD TRUSSES PURLINS, DECKING	
2001	MECHANICAL	SEALED CONC.	WOOD	DRYWALL-PAINT	DRYWALL-PAINT	
2002	COMPUTER	SEALED CONC.	WOOD	DRYWALL-PAINT	DRYWALL-PAINT	
2003	COVERED TERRACE	PAVER-CARB STONE	-	BRICK	WOOD TRUSSES PURLINS, DECKING	
2004	COVERED LOGGIA	CERAMIC TILE	C.T.	PAINT	WOOD TRUSSES PURLINS, DECKING	
2005	MEN	SEALED CONC.	WOOD	DRYWALL-PAINT	WOOD TRUSSES PURLINS, DECKING	
2006	WOMEN	SEALED CONC.	WOOD	DRYWALL-PAINT	WOOD TRUSSES PURLINS, DECKING	
2007	H.A.C.	SEALED CONC.	PAINT	DRYWALL-PAINT	WOOD TRUSSES PURLINS, DECKING	
2008	MECHANICAL	SEALED CONC.	PAINT	DRYWALL-PAINT	WOOD TRUSSES PURLINS, DECKING	

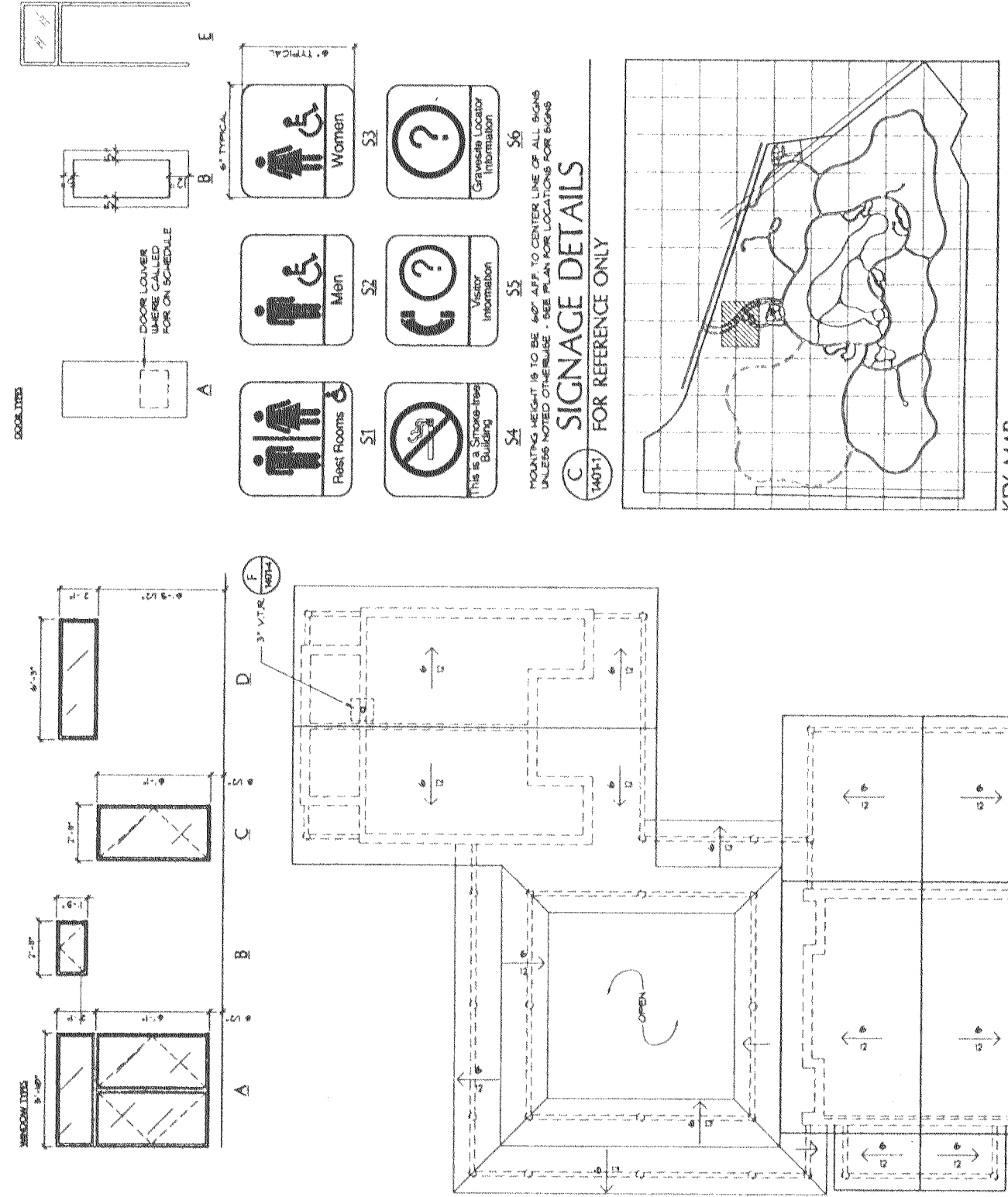
DOOR SCHEDULE

MARK	WIDTH	HEIGHT	THICK	TYPE	CONST.	FINISH	LABEL	FRAME	HARDWARE	JAMB	HEAD	SILL	REMARKS
1	3'-0"	6'-10"	1 1/2"	B	WOOD	STAIN/PAINT	--	UGL/CIG	HU 80	E-1/401-6	D-1/401-6	UGL/CIG	UGL/CIG TRANSOM 'D'
2	3'-0"	6'-10"	1 1/2"	B	WOOD	STAIN/PAINT	--	UGL/CIG	HU 80	E-1/401-6	D-1/401-6	UGL/CIG	UGL/CIG TRANSOM 'D'
3	3'-0"	6'-10"	1 1/2"	B	WOOD	STAIN/PAINT	--	UGL/CIG	HU 80	E-1/401-6	D-1/401-6	UGL/CIG	UGL/CIG TRANSOM 'D'
4	3'-0"	6'-10"	1 1/2"	B	WOOD	STAIN/PAINT	--	UGL/CIG	HU 80	E-1/401-6	D-1/401-6	UGL/CIG	UGL/CIG TRANSOM 'D'
5	3'-0"	6'-10"	1 1/2"	B	WOOD	STAIN/PAINT	--	UGL/CIG	HU 80	E-1/401-6	D-1/401-6	UGL/CIG	UGL/CIG TRANSOM 'D'
6	3'-0"	6'-10"	1 1/2"	B	WOOD	STAIN/PAINT	--	UGL/CIG	HU 80	E-1/401-6	D-1/401-6	UGL/CIG	UGL/CIG TRANSOM 'D'
7	3'-0"	6'-10"	1 1/2"	B	WOOD	STAIN/PAINT	--	UGL/CIG	HU 80	E-1/401-6	D-1/401-6	UGL/CIG	UGL/CIG TRANSOM 'D'
8	3'-0"	6'-10"	1 1/2"	B	WOOD	STAIN/PAINT	--	UGL/CIG	HU 80	E-1/401-6	D-1/401-6	UGL/CIG	UGL/CIG TRANSOM 'D'
9	3'-0"	6'-10"	1 1/2"	B	WOOD	STAIN/PAINT	--	UGL/CIG	HU 80	E-1/401-6	D-1/401-6	UGL/CIG	UGL/CIG TRANSOM 'D'

WINDOW SCHEDULE

MARK	WIDTH	HEIGHT	MAT.	TYPE	GLASS	JAMB	HEAD	SILL	REMARKS
A	3'-0"	6'-10"	UGL/CIG	CL	INT	H-1/401-6	G-1/401-6	K-1/401-6	UGL/CIG Fixed Transom
B	3'-0"	6'-10"	UGL/CIG	CL	INT	H-1/401-6	G-1/401-6	K-1/401-6	UGL/CIG Fixed Transom
C	3'-0"	6'-10"	UGL/CIG	CL	INT	H-1/401-6	G-1/401-6	K-1/401-6	UGL/CIG Fixed Transom
D	3'-0"	6'-10"	UGL/CIG	CL	INT	H-1/401-6	G-1/401-6	K-1/401-6	UGL/CIG Fixed Transom

NOTE: SEE SHEET 1401-3 FOR TOILET ROOM ACCESSORY SCHEDULE



ROOF PLAN
1/8" = 1' - 0"

SYMBOLS

1. SCALE NUMBER
2. DOOR NUMBER
3. WINDOW NUMBER
4. INTERIOR ELEVATION
5. TOILET ROOM ACCESSORY
6. SEE ACC. SCHEDULE & SPEC.

LEGEND

1. NON-RATED STUD WALL
2. NON-RATED MASONRY WALL
3. POURED CONCRETE COLUMN
4. POURED CONCRETE WALL
5. ALL DIMENSIONS ARE FROM FACE OF MASONRY OR FACE OF STUD UNLESS NOTED OTHERWISE. NOTIFY RESIDENT OF DISCREPANCIES BETWEEN ARCH. & STRUCT. DIMS. PRIOR TO CONSTRUCTION.

MATERIAL INDICATIONS

WOOD (FINISH)
WOOD (ROUGH)
PLYWOOD
INSULATION
EARTH
CONCRETE
STONE
CLUT
STUCCO
PLASTER
GYP. BRG.

PHASE III - BURIAL AREAS AND CEMETERY IMPROVEMENTS

Project Title: PUBLIC INFORMATION CENTER & BURIAL AREAS
Drawing No: 1401-1
Scale: 1/8" = 1' - 0"

Approved: William B. Zeller, Project Director
Approved: Michael J. O'Neil, Technical Support Service Director

Architectural Design Group, Inc.
10000 Old Dominion Road, Suite 100, Fairfax, VA 22030
Tel: 703/261-1100

Consultant: E D S A
Edward D. Stone, Jr. and Associates
Planning and Landscape Architects
1000 Old Dominion Road, Suite 100, Fairfax, VA 22030
Tel: 703/261-1100

Public Information Center and Burial Areas
Drawing No: 1401-1
Scale: 1/8" = 1' - 0"

Florida National Cemetery
Bureau of Land Management
U.S. Department of the Interior

SYMBOL SCHEDULE

- S SINGLE POLE WALL SWITCH, 48" AFF TO TOP.
- S_T TIMER WALL SWITCH, 48" AFF TO TOP.
- S_{WP} WEATHERPROOF SWITCH
- || HOME RUN, ARROWS INDICATE QUANTITY.
- ⊕ SINGLE RECEPTACLE-20A, MTD, 18" AFF UNLESS OTHERWISE NOTED.
- ⊕ DUPLEX RECEPTACLE, 16" AFF, 120V/20A.
- ⊕ DUPLEX RECEPTACLE, 6" ABOVE COUNTER, 120V/20A.
- ⊕ DUPLEX RECEPTACLE 20A, MTD, 18" AFF.
- GFI SUBSCRIPT "GFI" INDICATES GROUND FAULT TYPE.
- ⊕ 208V, 20A, 1Φ, 2-POLE, 3W NEMA 6-20R.
- ⊕ FLOOR OUTLET
- ⊕ CEILING MOUNTED RECEPTACLE, 120V/20A.
- ⊕ EXISTING FLOURESCENT FIXTURE
- ⊕ 2' X 4' RECESSED FLOURESCENT LIGHT
- ⊕ 1' X 4' FLOURESCENT LIGHT
- ⊕ EXIT LIGHT
- ⊕ ALARM BELL FOR LIGHTNING
- ⊕ GROUND CONNECTION
- ⊕ TELEPHONE OUTLET (PAY STATION), MTD, 4'-0" A.F.F.
- ⊕ TELEPHONE OUTLET, MTD: 18" A.F.F. UNLESS OTHERWISE NOTED
- ⊕ TELEPHONE OUTLET (WALL MOUNTED) MTD 54" A.F.F. UNLESS OTHERWISE NOTED
- ⊕ TELEVISION JACK, 16" AFF.
- ⊕ COMMUNICATION OUTLET, 16" AFF.
- ⊕ JUNCTION BOX, MTD 1'-6" AFF UNLESS NOTED OTHERWISE
- ⊕ SPECIAL BOX AS DESCRIBED
- ⊕ SECURITY ALARM CONTACTS.
- ⊕ DISTRIBUTION OR POWER PANELBOARD
- ⊕ FUSED OR UNFUSED DISCONNECT SWITCH
- ⊕ CONTACTOR, (POLES SHOWN)
- ⊕ RELAY.
- ⊕ PHOTO CELL
- ⊕ THERMOSTAT
- ⊕ OCCUPANCY SENSOR FOR LIGHTS AND FANS.
- ⊕ SECURITY BEAM
- ⊕ SECURITY MOTION SENSOR
- ⊕ KEY PAD
- ⊕ TIME CLOCK
- ⊕ HORN SECURITY
- ⊕ DESIGNATED ALARM
- AFF ABOVE FINISHED FLOOR
- AHU AIR HANDLER
- CU CONDENSING UNIT
- EF EXHAUST FAN
- EP EXPLOSION PROOF
- ESD ELECTRICAL STORM IDENTIFICATION DEVICE
- GFI GROUND FAULT INTERRUPTER
- LAN LOCAL AREA NETWORK
- LT LIGHT
- MTC MAIN TELECOMMUNICATIONS CABLING
- MSEN MOTION SENSOR
- REF FOR REFERENCE ONLY
- TB TERMINAL BLOCK
- TC TELECOMMUNICATIONS CLOSET
- TSW TIMER SWITCH
- TIB 42" X 32" X 3/4" M.G. PLYWOOD TELEPHONE TERMINATION BOX
- WP WEATHER PROOF
- WU WALL A/C UNIT
- NIC NOT IN CONTRACT
- UTP UNSHIELDED TWISTED PAIR
- SAP SECURITY ALARM PANEL
- PP PATCH PANEL
- LB RIGHT ANGLE CONDUIT BODY
- FACP FIRE ALARM CONTROL PANEL
- FATC FIRE ALARM TERMINATION CABINET
- FS FLOW SWITCH
- TS TAMPER SWITCH
- MH MECHANICALLY HELD
- CKT CIRCUIT
- BKR BREAKER
- THIN 90°C CONDUCTOR
- UNO UNLESS NOTED OTHERWISE
- THAN 75°C CONDUCTOR

DRAWING NOTES:

- 1- EXISTING AND NEW BUILDING SHALL BE MODIFIED AND ADDED AS SHOWN ON SHEETS E1 THROUGH E9.
- 2- INSTALL ESD LIGHTNING DETECTION SYSTEM. USE FOUR PAIR OF EXISTING SPARE TELEPHONE WIRES THAT RUN FROM BUILDING 1001 TO COMMITAL SHELTER (WITH NEW ESD), AND FROM SHELTER TO PUMP HOUSE TO CONNECT LIGHTNING SYSTEM TOGETHER. USE 2 PAIR OF NEW TELEPHONE WIRES FROM WIRES FROM PUMP HOUSE TO BUILDING 3001 TO EXTEND SYSTEM TO BUILDING 3001.
- 3- COORDINATE TRANSFORMER AND CONDUIT LOCATIONS WITH L DRAWINGS.
- 4- APPROXIMATE DISTANCE BETWEEN ADMINISTRATION BLDG. & BLDG. 1401 IS 187'-5". SEE LANDSCAPE DWG.
- 5- SEE SHEET E5 & E6 FOR APPROXIMATE DISTANCES AT BLDG. 3001.
- 6- DRAWING NOTES GIVE A BRIEF DESCRIPTION OF THE WORK ON THE SHEET. DESCRIPTION IS NOT ALL INCLUSIVE AND IT REMAINS THE CONTRACTORS RESPONSIBILITY TO PERFORM ALL INDICATED WORK AND PROVIDE COMPLETE AND OPERATING SYSTEMS.

7- ESD SHALL HAVE THE FOLLOWING OPERATIONAL SPECIFICATIONS:

- DETECTION RANGE: CLOUD TO GROUND: 30 MILES OMNIDIRECTIONAL.
- DETECTION EFFICIENCY: THUNDERSTORM: 100% WITHIN 10 MILES WITH 3 DISCHARGES. CLOUD TO GROUND: 90% WITHIN 0 TO 10 MILES.
- RANGE RESOLUTION: (USER SELECTABLE) 0-5 MILES, 5-10 MILES, 10-30 MILES.
- FALSE ALARMS: NONE.
- SENSOR: SOLAR POWERED.
- THREAT MANAGEMENT: PATENTED RANGING TECHNOLOGY.
- STATUS: SELF DIAGNOSTIC 4 HOUR BACKUP BATTERY.
- DISPLAY: ALPHA-NUMERIC, 4x40 CHARACTER, LIQUID CRYSTAL.
- PHYSICAL: COMPLY WITH DESIGN AND PHYSICAL CONDITIONS.
- COMMUNICATIONS: 400 MICRON GLASS OPTICAL FIBER 9.6 - 19.2 KBAUD, GAI FORMAT.

GENERAL NOTES:

- 1- NEW, REWORK AND EXPANDED 120/208 VOLT ELECTRICAL SYSTEMS, ALL PER THE NATIONAL ELECTRIC CODE, AND THE REQUIREMENTS OF THE VETERANS ADMINISTRATION.
- 2- POWER, LIGHTS, TELEPHONE, LAN, SECURITY AND NEW SERVICE SHALL BE CONSTRUCTED FOR NEW BUILDING 1401.
- 3- POWER, LIGHTS, TELEPHONE, LAN AND SECURITY SHALL BE REWORKED IN SEVERAL PARTS OF EXISTING BUILDING 1001.
- 4- POWER, LIGHTS, TELEPHONE, LAN, AND SECURITY SHALL BE REWORKED FOR EXISTING BUILDING 3001. POWER, LIGHTS AND SECURITY SHALL BE CONSTRUCTED FOR NEW BUILDING 3002.
- 5- LIGHTNING DETECTION SYSTEM SHALL BE INSTALLED AT COMMITAL SHELTER. ALARMS AND AUTOMATIC SHUT DOWN WILL BE CONSTRUCTED AT BUILDINGS 1001, 1401, 3001, AND REMOTE PUMP STATION. DETECTION SHALL USE EXISTING AND NEW TELEPHONE WIRES FOR COMMUNICATION.
- 6- PROVIDE BOXES, COVERS & CONDUIT FOR EXHAUST FAN SPEED CONTROLS.

CONSTRUCTION NOTES:

- 1 FIELD RUN CONDUITS APPROXIMATELY AS SHOWN IN UTILITY CORRIDOR SHOWN ON LANDSCAPE DWGS.
- 2 LOCATE ESD ON ROOF OF COMMITAL SHELTER, FASTEN THROUGH ROOF PER ARCHITECTURAL DRAWING.
- 3 LOCATE RECEIVER/ TRANSMITTER IN GROUND LEVEL CABINET ON EAST SIDE OF SHELTER. PROVIDE NEW CIRCUIT WITH NEW RECEPTACLE IN CABINET. POWER RECEPTACLE FROM NEW 20A CKT. BKR. IN EXISTING CUTLER HAMMER, 125A, 1Φ PANEL AT SOUTH END OF CABINET.
- 4 LOCATE ENCLOSURE WITH DRY CONTACT RELAYS AND 4 POLE RELAYS. SEE CONTROL DETAIL #1 SHEET E-4.
- 5 ROOF MTD. LIGHTNING SENSOR WITH FIBER OPTIC CONNECTIONS PLUS DIGITAL DISPLAY IN CABINET. SYSTEM SHALL BE COMPLETE, FULLY INSTALLED AND MADE OPERATIONAL BY UNIT MANUFACTURER.
- 6 IRRIGATION SYSTEM CONTROLS WITH CONTACTOR OPENED BY LIGHTNING PROTECTION SYSTEM.
- 7 COMPUTER SYSTEM CIRCUIT CONTACTOR LOCATED IN CLOSET WITH TTB. TIE IN NEW CIRCUITS FOR COMPUTERS. CONTACTOR TO BE OPENED BY LIGHTNING PROTECTION SYSTEM. SEE SHEET E4 AND E6.
- 8 COMPUTER PANEL D CONTACTOR TO BE OPENED BY LIGHTNING PROTECTION SYSTEM. SEE SHEET E4.
- 9 PROVIDE LIGHTNING PROTECTION SYSTEM WITH MASTER LABEL.
- 10 UNDERGROUND 1 1/2" CONDUIT WITH 25 PAIR TELEPHONE CABLE FROM TTB IN BLDG. 3001 TO NORTHEAST CORNER OF EXISTING PUMP HOUSE. MINIMUM BURIAL 24". IDENTIFY EXISTING 1 1/2" CONDUIT AND CONDUITS & PIPES PRIOR TO CONSTRUCTION. TERMINATE IN PUMP HOUSE ON NEW 1" FUSED PUNCH DOWN BLOCK NEXT TO EXISTING TELEPHONE WIRE TERMINATIONS.
- 11 USE SPARE SPACE IN EXISTING 400 AMP PANEL FOR NEW 20 AMP BREAKER TO POWER LIGHTNING SYSTEM CONTROL #2.
- 12 CKT FOR LIGHTING SIGN. LIGHT SHALL BE OPERATED BY PHOTO CELL. SEE LANDSCAPE DRAWINGS FOR LOCATION AND COORDINATION.

DISTANCES: (DIRECT)

1. COMMITAL SHELTER WITH ESD TO PUMP HOUSE = 1270 FT.
2. COMMITAL SHELTER WITH ESD TO BLDG. 3001 = 2100 FT.
3. COMMITAL SHELTER WITH ESD TO ADMINISTRATION BLDG. = 1820 FT.
4. COMMITAL SHELTER WITH ESD TO BLDG. 1401 = 1820 FT.



OVERALL ELECTRICAL SITE PLAN
1"=100'-0"

EDSA Edward D. Stone, Jr. and Associates Planners and Landscape Architects 1512 E. Broward Boulevard, Suite 110 Fort Lauderdale, FL 33301 954 524-3330	
CONSULTING ENGINEERS R. O. COVINGTON & ASSOCIATES Robert O. Covington PE #01841 225-A Municipal Airport Bartow, FL 33500-9004 Phone: (813) 533-8282 Date: (813) 533-1524 Fax: (813) 533-1723	

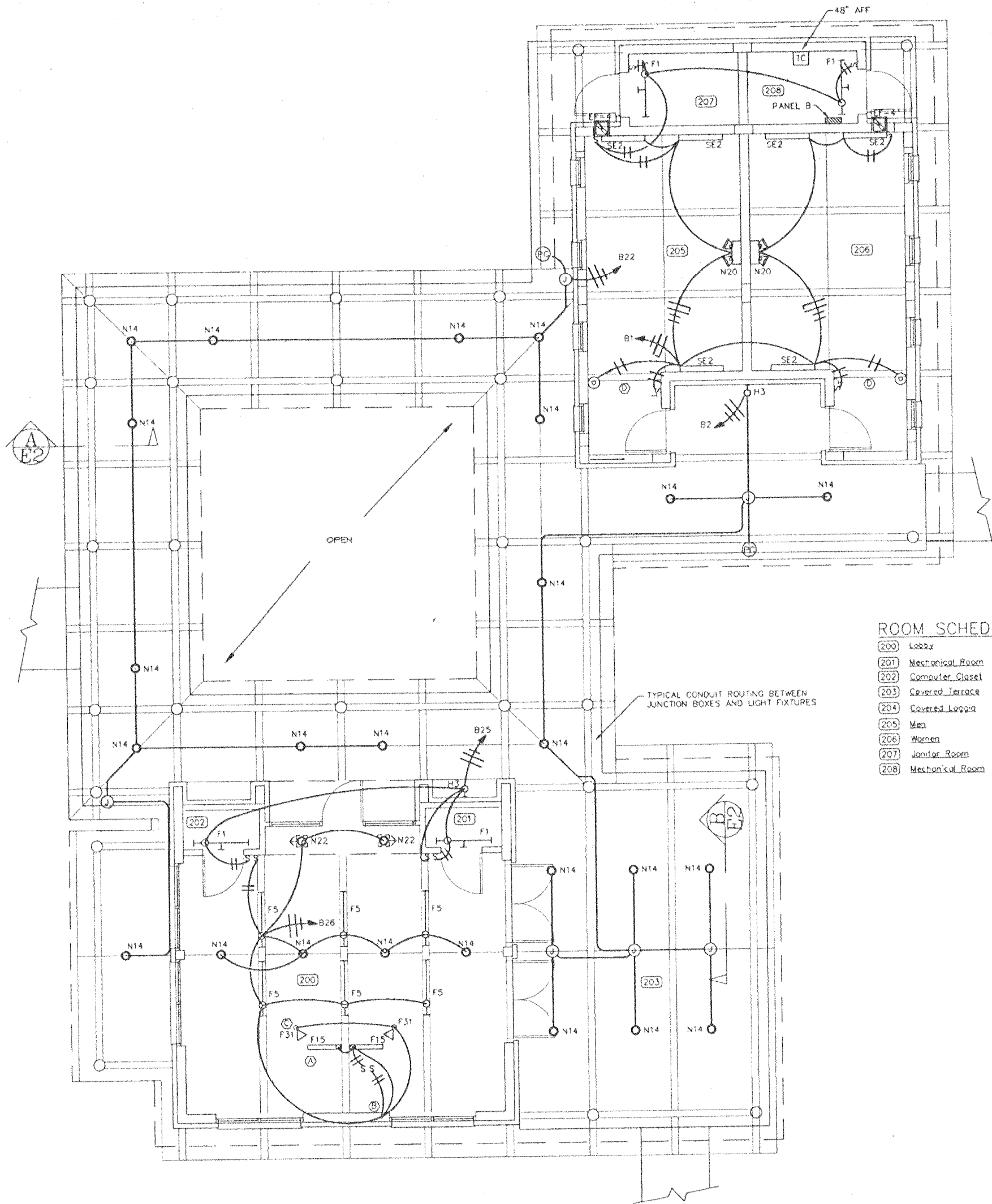
Drawing Title ELECTRICAL SITE PLAN AND SYMBOL SCHEDULE	
Approved: VBA/MCS Team Project Director <i>William B. Zell</i>	
Approved: MCS Technical Support Service Director <i>Michael D. Smith</i>	

Project Title PHASE III: BURIAL AREAS AND CEMETERY IMPROVEMENTS	
Building Number OVERALL	Checked ROC
Drawn KTH	
Location FLORIDA NATIONAL CEMETERY BUSHNELL, FLORIDA	

Date 17 JULY 98
Project No. 911-005
Drawing No. E-1
Dwg. 124 OF 134

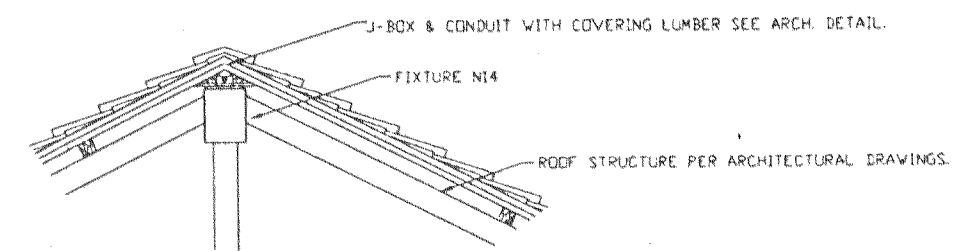
100% CONSTRUCTION DOCUMENTS



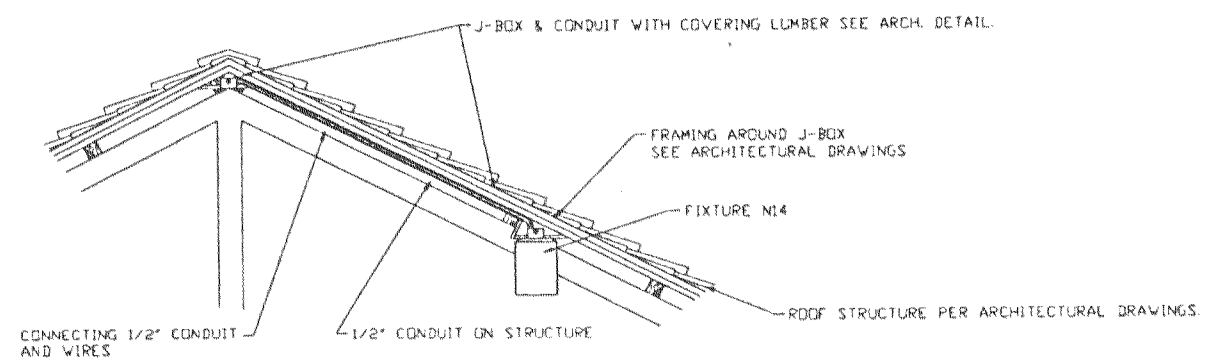


ROOM SCHEDULE

200	Lobby
201	Mechanical Room
202	Computer Closet
203	Covered Terrace
204	Covered Loggia
205	Men
206	Women
207	Janitor Room
208	Mechanical Room



INSTALLATION "1"
SCALE: 1/2" = 1'-0"



INSTALLATION "2"
SCALE: 1/2" = 1'-0"

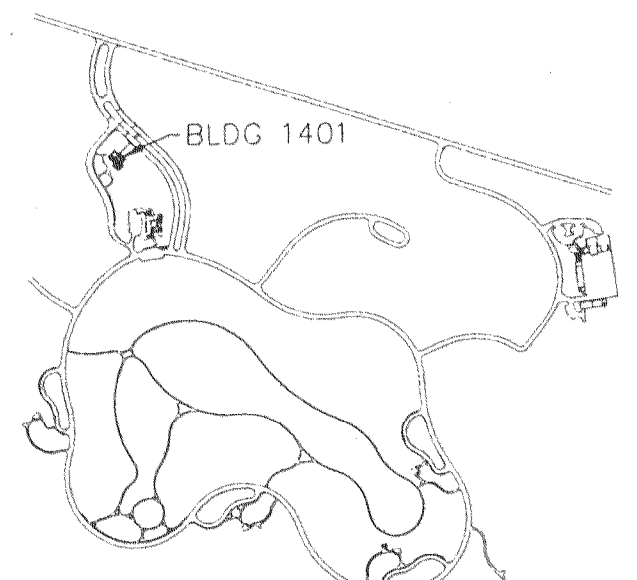
CONSTRUCTION NOTES:

- FIXTURES F15 SHALL BE MOUNTED ON FURNITURE. SEE ARCHITECTURAL DWGS. FURNITURE SHALL HAVE LIGHT SWITCH. INSTALL CONDUIT UNDER SLAB.
- ROUTE CONDUIT DOWN IN WALL AND UNDER SLAB. TERMINATE RIDGID CONDUIT IN J-BOX UNDER FURNITURE. EXTEND WIRING TO FIXTURES F15 AND SWITCHES WITH FLEXIBLE CONDUIT.
- MOUNT SPOT LIGHTS F31 ON CEILING AND CONTROL WITH SWITCH MOUNTED IN FURNITURE BELOW.
- OCCUPANCY SENSOR MOUNTED ON BOTTOM OF TRUSS SHALL OPERATE EXHAUST FAN AND ROOM LIGHTS. TIME CLERK IS WIRED TO SENSOR.

DRAWING NOTES:

- PROVIDE NEW LIGHTING AND CONTROLS FOR NEW BUILDING.
- FIXTURE N14 SHALL BE MOUNTED OVER J-BOX FLUSH WITH BUILT OUT WOOD SURFACE. CONDUIT SHALL BE RUN CONCEALED.
- FIXTURE F5 SHALL BE CONCEALED BEHIND WOOD BOX ON TOP OF BOTTOM CHORD OF ROOF TRUSS.
- FIXTURE F15 SHALL BE CONCEALED UNDER COUNTER TOP ON ATTENDANTS SIDE OF DESK. LIGHT SHALL ILLUMINATE ATTENDANTS WORK AREA. FIXTURE SHALL FIT SPACE PROVIDED IN FURNITURE.
- TIME CLOCK SHALL BE 7 DAY, 24 HOUR WITH SPRING CARRYOVER & 4 NO/NC CONTACTS, 115V. TIME CLOCK IS LOCATED IN ROOM 208 AND POWERED FROM NEAREST LIGHT CIRCUIT.
- SEE ARCHITECTURAL DRAWINGS FOR FIXTURE MOUNTING DESCRIBED IN NOTES 1 THRU 3 ABOVE.
- CONDUITS SHALL RUN ABOVE AND BEHIND OPEN FRAMING WHERE POSSIBLE. CONDUIT FOR FIXTURE N14 SHALL RUN APPROXIMATELY AS INDICATED. COORDINATE ROUTING OF ALL EXPOSED CONDUIT WITH ARCHITECT FOR INSTALLATION. UN-APPROVED ROUTINGS SHALL BE RERUN AS REQUIRED AT NO EXPENSE TO THE OWNER.

BLDG 1401 LIGHTING PLAN
1/4" = 1'-0"



KEY PLAN
N.T.S.

100% CONSTRUCTION DOCUMENTS

Consultant: **EDSA**
Edward D. Stone, Jr. and Associates
Planners and Landscape Architects
1512 E. Broward Boulevard, Suite 110
Fort Lauderdale, FL 33301
954 524-3330

Subconsultant: **R. O. COVINGTON & ASSOCIATES**
CONSULTING ENGINEERS
Robert O. Covington, P.E. #01641
225-A Municipal Airport
Bartow, FL 33830-9504
813 534-1723

Drawing Title: **PUBLIC INFORMATION CENTER LIGHTING PLANS**

Approved: *William B. Zell*
JMS Technical Support Services Director

Project Title: **PHASE III: BURIAL AREAS AND CEMETERY IMPROVEMENTS**

Building Number: **1401**

Location: **FLORIDA NATIONAL CEMETERY, BUSHNELL, FLORIDA**

Date: **17 JULY 98**

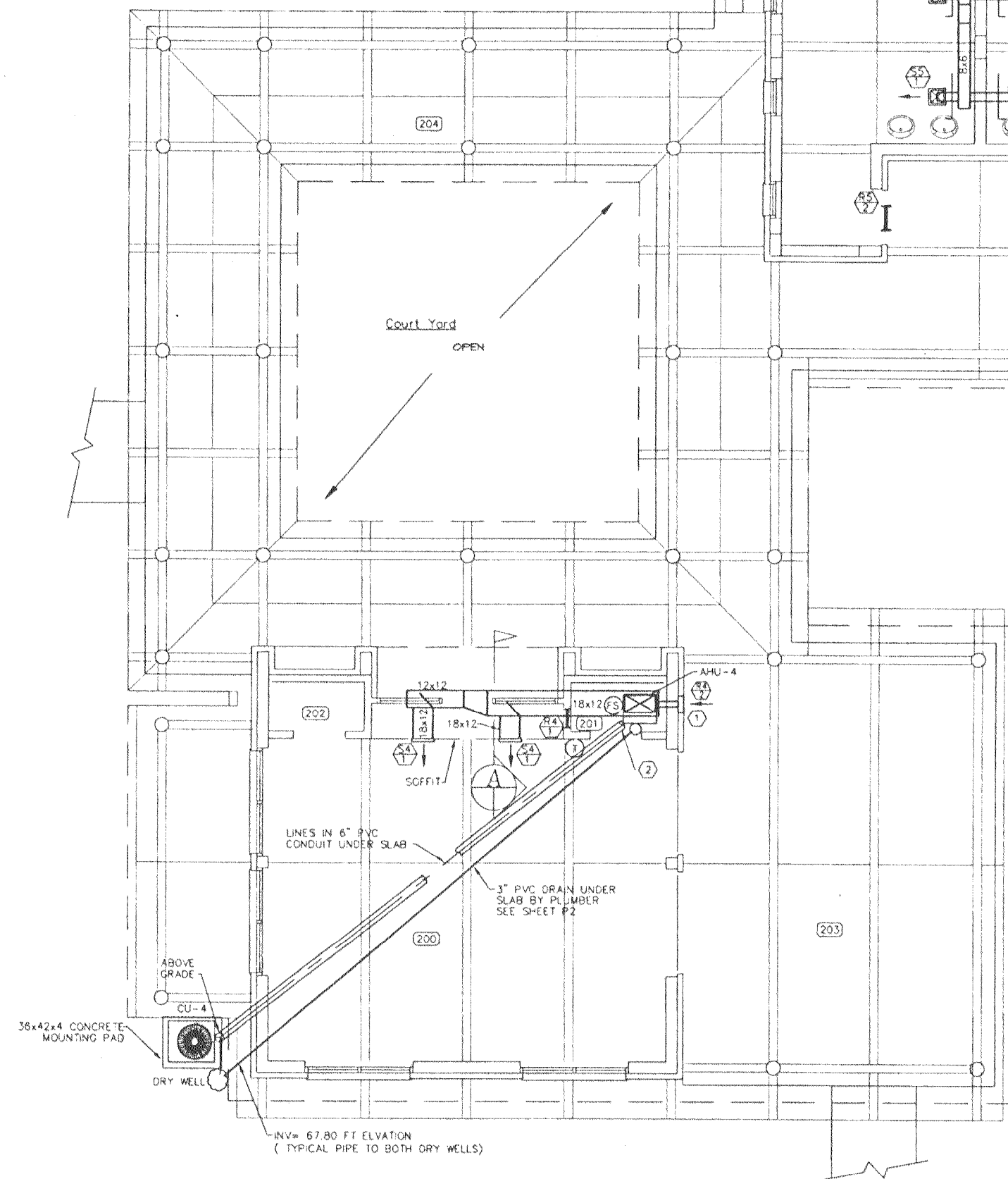
Project No.: **911-005**

Drawing No.: **E-2**

Page: **123 OF 134**



TYP. AH CONTROL SCHEMATIC



BLDG 1401 MECHANICAL PLAN
1/4" = 1'-0"

GENERAL NOTES:

- 1- PROVIDE COMPLETE AND OPERATING AIR CONDITIONING SYSTEMS IN COMPLIANCE WITH THE LATEST STANDARD BUILDING CODE, AND VETERANS ADMINISTRATION REQUIREMENTS.
- 2- ALL REFRIGERANT WORK AND ASSOCIATED CONSTRUCTION TO BE PERFORMED BY FLORIDA LICENSED CONTRACTOR USING CERTIFIED EQUIPMENT PER THE REQUIREMENTS OF THE AUTHORITIES HAVING JURISDICTION.
- 3- THERMOSTATS SHALL FUNCTION IN THE MODE SET TO: COOL BY OPERATING THE COMPRESSOR WHEN TEMPERATURE RISES ABOVE THE SET POINT. HEAT BY ENERGIZING THE ELECTRIC HEATER WHEN THE TEMPERATURE FALLS BELOW THE SET POINT.
- 4- EXHAUST AND OUTSIDE AIR INTAKE DUCTS SHALL BE SHEET METAL. DUCTS FOR CONDITIONED AIR SHALL BE WRAPPED SHEET METAL.
- 5- ALL NEW AND REFURBISHED EQUIPMENT SHALL BE FREE OF EXCESS NOISE AND VIBRATION. PROVIDE ANY NEEDED RUBBER VIBRATION ISOLATORS MADE OF RIBBED NEOPRENE, 3 PER INCH, THICKNESS 3/8". LOADING 5 TO 50 PSI, DEFLECTION .025" TO .095", CUT TO MATCH LOAD AREA. BALANCE ROTATING EQUIPMENT AS REQUIRED TO MEET MANUFACTURER'S ADVERTISED NOISE RATINGS. IN NO CASE SHALL MORE THAN 85dBA AT 4 FT ABOVE THE FLOOR AND 3 FEET HORIZONTALLY BE DETECTED.

ROOM SCHEDULE

- 200 Lobby
- 201 Mechanical Room
- 202 Computer Closet
- 203 Covered Terrace
- 204 Covered Loggia
- 205 Men
- 206 Women
- 207 Janitor Room
- 208 Mechanical Room

SYMBOL SCHEDULE

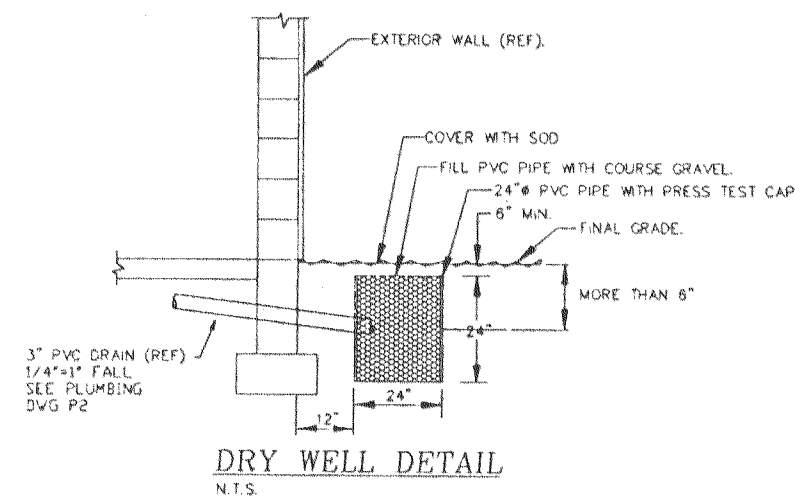
- SUPPLY DIFFUSER
- RETURN DIFFUSER
- EXHAUST FAN
- SUPPLY AIR DUCT - UP
- SUPPLY AIR DUCT - DOWN
- RETURN/EXHAUST AIR - UP
- RETURN/EXHAUST DUCT - DOWN
- CEILING DIFFUSER, SQUARE
- BRANCH TAKE OFF WITH RAKE
- MANUAL VOLUME DAMPER
- NEW DUCT SIZE (WIDTH x DEPTH)
- VANED ELBOW
- FIRE STAT
- THERMOSTAT 54° AFF. ON/OFF, HEAT/COOL
- RETURN AIRFLOW DIRECTION
- SUPPLY AIRFLOW DIRECTION
- FIXTURE MARK NUMBER
- VOLUME DAMPER
- DOOR/WALL LOUVER
- UNDERCUT DOOR 1"
- HVAC WALL UNIT
- AIR HANDLING UNIT
- CONDENSING UNIT
- ENERGY EFFICIENCY RATIO
- EXHAUST FAN
- FIRE DAMPER
- OUTSIDE AIR
- RETURN AIR
- SUPPLY AIR
- STATIC PRESSURE Pa (INCHES OF WATER)
- VOLUME DAMPER (MANUAL OPPOSED BLADE)
- VIBRATION ISOLATOR
- LIQUID & SUCTION LINES
- SHEET METAL

CONSTRUCTION NOTES:

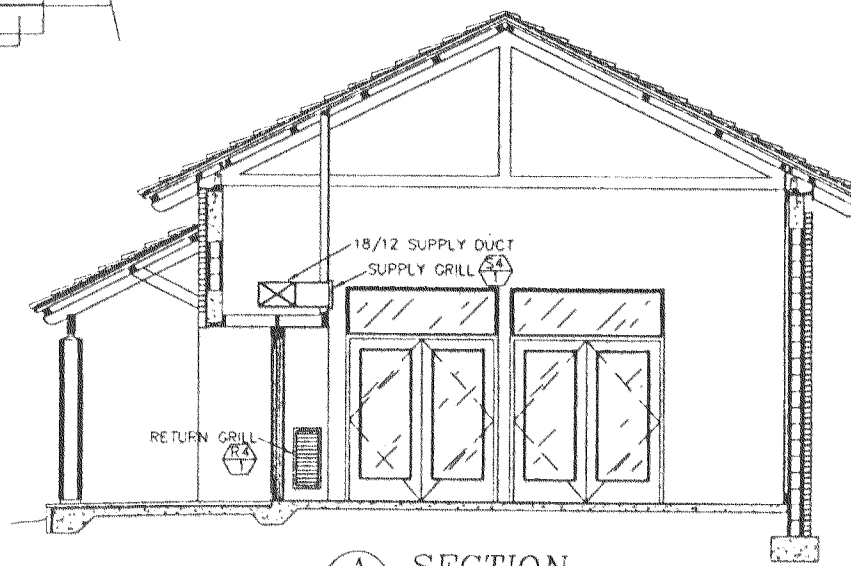
- 1 4x4 SHEET METAL DUCT WITH WEIGHTED BACKDRAFT DAMPER TO OPEN WHEN AHU-4 IS ON. LOUVER 18" AFF. DUCT TO PROJECT INTO ROOM AS REQUIRED BY DAMPER.
- 2 REFRIGERANT PIPE DOWN TO CHASE.

DRAWING NOTES:

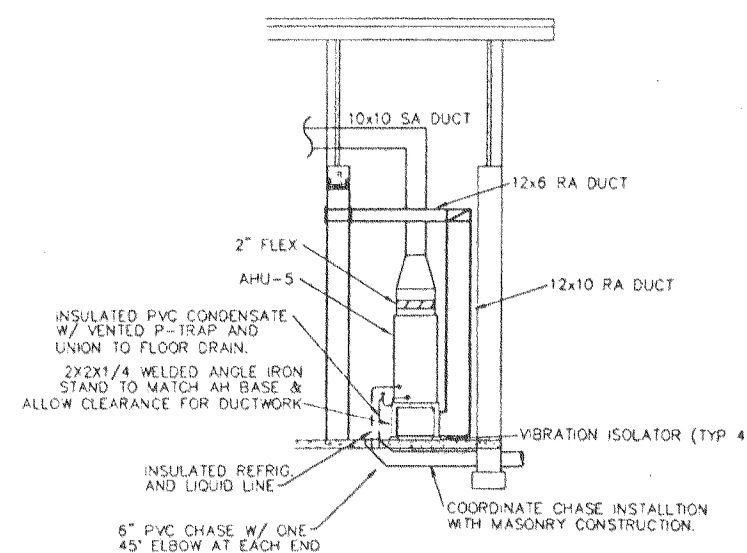
1. INSTALL SIDE WALL EXHAUST FANS 12" TO TOP OF FAN BELOW STRUCTURAL BEAMS. COORDINATE WITH ARCHITECTURAL ELEVATIONS.
2. COORDINATE VENT LOCATIONS WITH ARCHITECTURAL DRAWINGS.
3. COORDINATE INSTALLATION OF CONDENSING UNITS WITH LANDSCAPE DRAWINGS.
4. THERMOSTAT IN ROOM 206 SHALL HAVE LOCKING COVER AND CONTROL AHU-5 FOR HOT AND COLD.
5. EF-4 IS CONTROLLED BY MOTION SENSOR TO BE ON AND OFF WITH LIGHTS. SEE SHEET E-2.
6. AHU-4 IS CONTROLLED TO HEAT OR COOL WITH WALL MOUNTED THERMOSTAT.



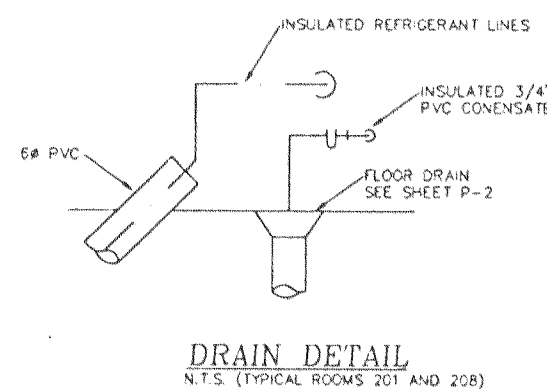
DRY WELL DETAIL
N.T.S.



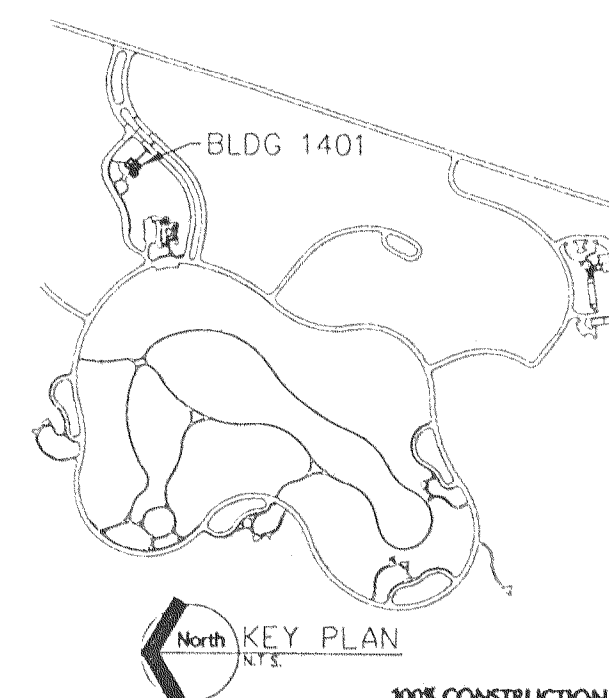
SECTION A-A
SCALE: 1/4" = 1'-0"



SECTION B-B
SCALE: 1/4" = 1'-0"

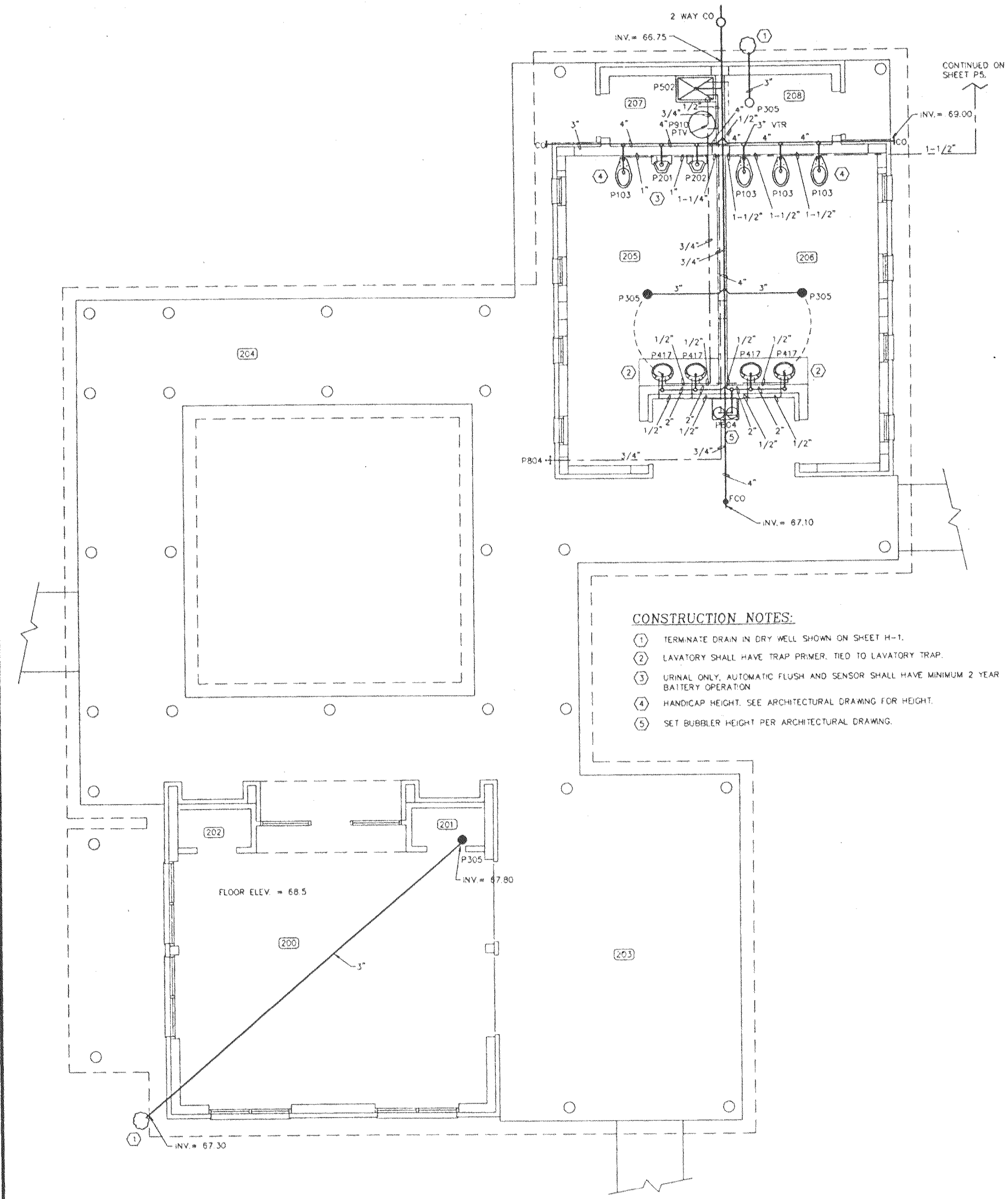


DRAIN DETAIL
N.T.S. (TYPICAL ROOMS 201 AND 208)



KEY PLAN
N.T.S.

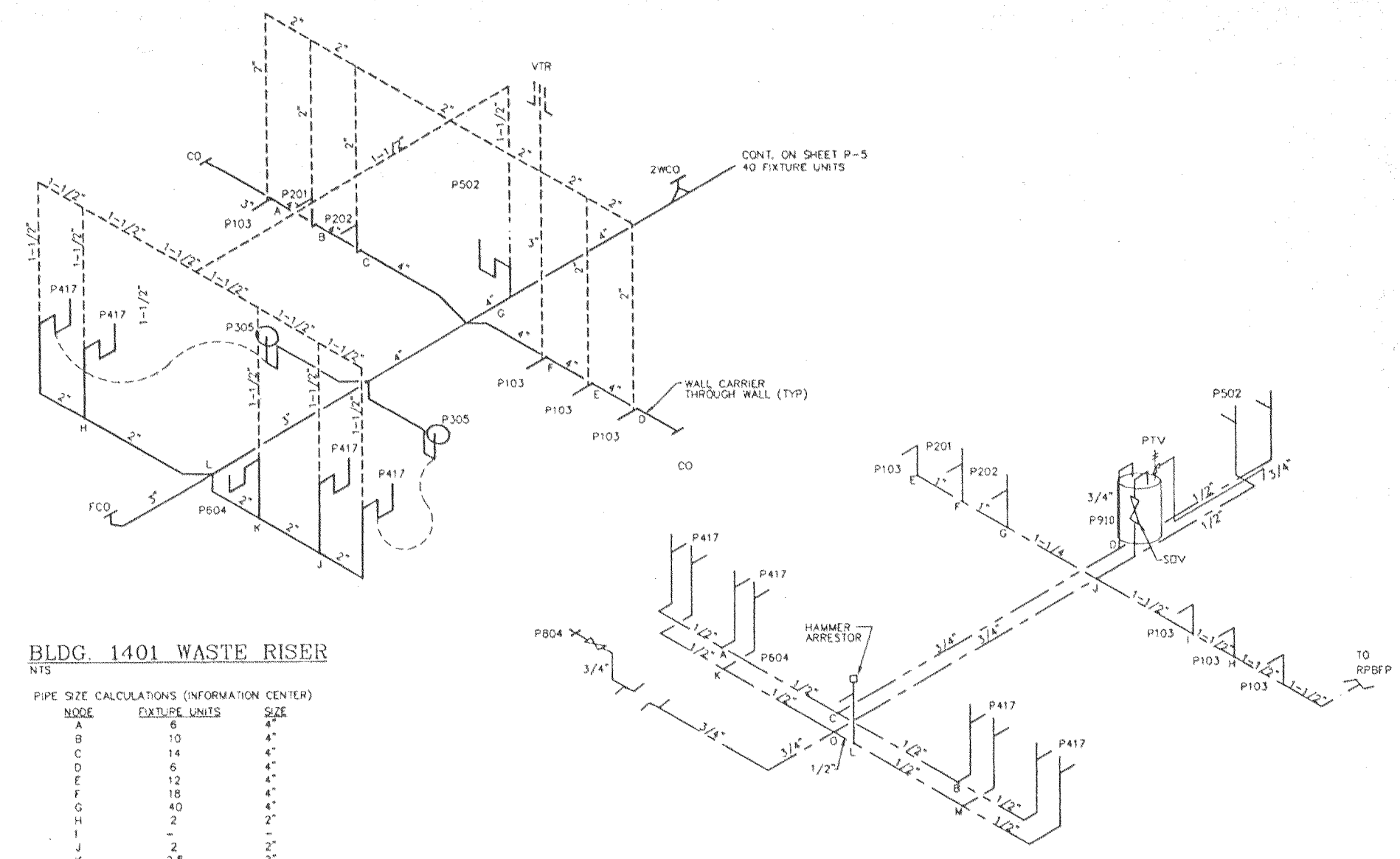
Consultant: EDSA Edward D. Stone, Jr. and Associates Planners and Landscape Architects 1512 E. Broward Boulevard, Suite 110 Fort Lauderdale, FL 33301 954 524-3330	Drawing Title: PUBLIC INFORMATION CENTER MECHANICAL PLAN	Project Title: PHASE III: BURIAL AREAS AND CEMETERY IMPROVEMENTS	Date: 17 JULY 98
Subconsultant: R. O. COVINGTON & ASSOCIATES CONSULTING ENGINEERS 225-A Municipal Airport Fort Lauderdale, FL 33301-9504 954 524-3330	Approved: VBA/VCS Team Project Director William B. Zill Approved: MCS Technical Support Service Director Marianne DeWitt	Building Number: 1401	Checked: ROC
Drawing No.: H-1	Location: FLORIDA NATIONAL CEMETERY BUSHNELL, FLORIDA	Drawing No.: H-1	Date: 17 JULY 98



BLDG. 1401 PLUMBING PLAN
SCALE: 1/4" = 1'-0"

ROOM SCHEDULE

200	Lobby
201	Mechanical Room
202	Computer Closet
203	Covered Terrace
204	Covered Loggia
205	Men
206	Women
207	Janitor Room
208	Mechanical Room



BLDG. 1401 WASTE RISER
NTS

PIPE SIZE CALCULATIONS (INFORMATION CENTER)

NODE	FIXTURE UNITS	SIZE
A	6	1/2"
B	10	3/4"
C	14	1"
D	6	1/2"
E	12	3/4"
F	18	1"
G	40	1-1/2"
H	2	1/2"
I	2	1/2"
J	2	1/2"
K	2.5	1/2"
L	5	3/4"

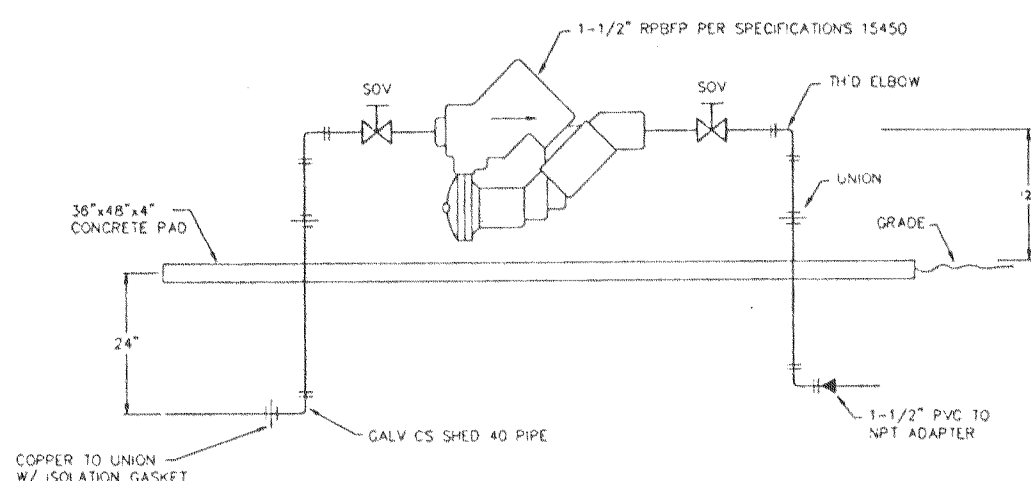
FIXTURE UNITS PER TABLE 15.1 AND FIXTURE BRANCH SIZES PER TABLE 15.2 OF THE DEPARTMENT OF VETERANS AFFAIRS PLUMBING DESIGN MANUAL FOR CEMETERY PROJECTS, DATED, SEPTEMBER 1, 1993.

BLDG. 1401 HOT & COLD SUPPLY RISER
NTS

PIPE SIZE CALCULATIONS (INFORMATION CENTER)

NODE	FIXTURE UNITS	SIZE
A	1.2	1/2"
B	1.2	1/2"
C	2.4	3/4"
D	4.65	3/4"
E	6	1"
F	11	1"
G	16	1"
H	18	1-1/4"
I	37.8	1-1/4"
J	1.2	1/2"
K	3.4	1/2"
L	1.2	1/2"
M	1.2	1/2"
O	41.2	1-1/4"

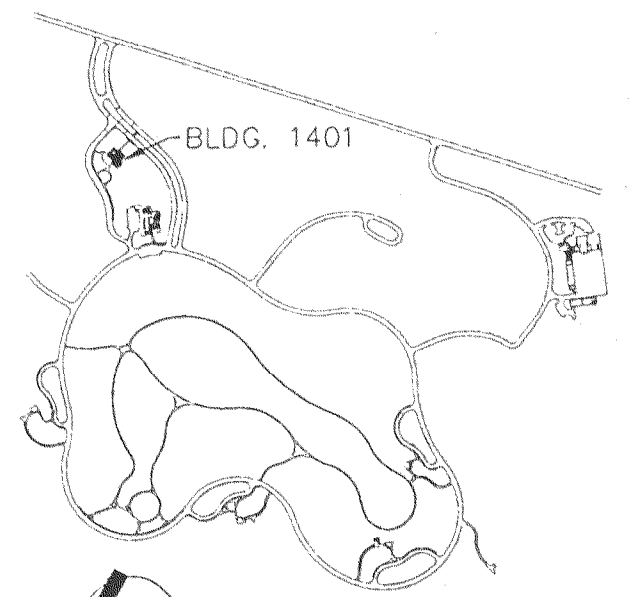
SIZES BASED ON 7 F.P.S., FIXTURE UNITS PER TABLE 15.1 OF THE DEPARTMENT OF VETERANS AFFAIRS PLUMBING DESIGN MANUAL FOR CEMETERY PROJECTS, DATED, SEPTEMBER 1, 1993.
* FIXTURE UNITS REDUCED FOR CW, HW SUPPLY TOTALS PER TABLE 15.1 OF PLUMBING DESIGN MANUAL, SUPPLY PRESSURE OF 65 PSI AT RPFBP.



BACK FLOW PRESSURE DETAIL
NTS

PLUMBING FIXTURE SCHEDULE

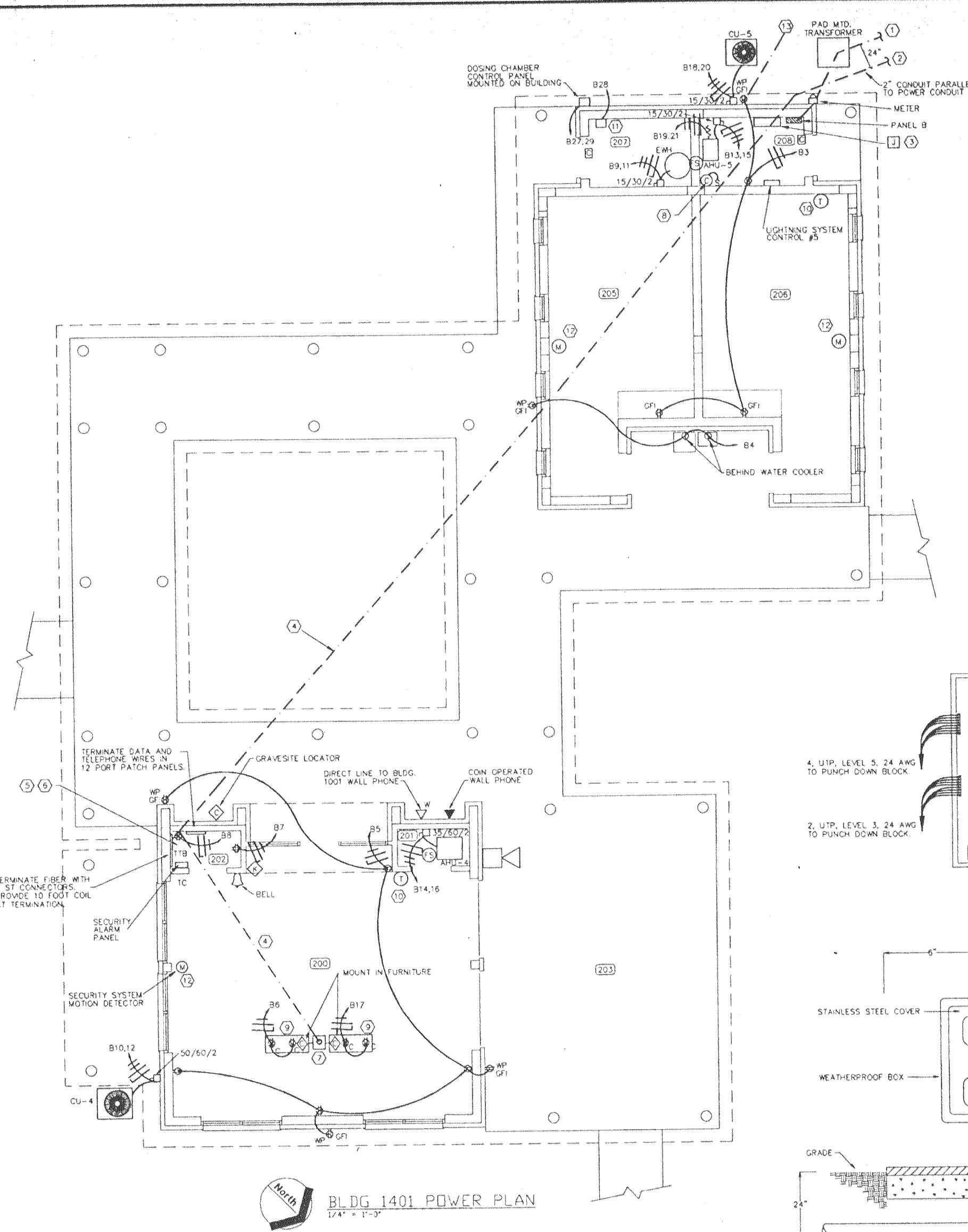
P103	WATER CLOSET, FLUSH VALVE - SS
P103A	WATER CLOSET, FLUSH VALVE
P201	URINAL, SIPHON JET - SS
P202	URINAL, SIPHON JET - SS
P301	SHUT OFF VALVE
P305	FLOOR DRAIN
P310	FLOOR CLEAN OUT
P315	WALL CLEAN OUT
P401	LAVATORY, WALL HUNG - WHITE PORCELAIN
P417	LAVATORY, COUNTER TOP - SS
P502	SERVICE SINK, FLOOR MTD.
P504	SINK, SINGLE COMPARTMENT, COUNTER TOP
P509	SINK WITH FOOT CONTROLS, DRAIN BOARD
P524	SINK, DOUBLE COMPARTMENT, COUNTER TOP
P528	SINK, SINGLE COMPARTMENT, KITCHEN S.S.
P604	ELECTRIC WATER COOLER - TWO LEVEL TYPE
P707	EMERGENCY SHOWER & EYE WASH
P804	HOSE BIBB, SINGLE
P815	REDUCED PRESSURE BACK FLOW PREVENTOR
P901	20 GALLON, ELECTRIC WATER HEATER
P910	5 GALLON, ELECTRIC WATER HEATER
	PROVIDE CUT OFF VALVE AT EACH PLUMBING FIXTURE.



KEY PLAN
NTS
100% CONSTRUCTION DOCUMENTS

Consultant: EDSA Edward D. Stone, Jr. and Associates Planners and Landscape Architects 1512 E. Broward Boulevard, Suite 110 Fort Lauderdale, FL 33301 954 524-3330	Drawing Title: PUBLIC INFORMATION CENTER 1/4\"/> 	Project Title: PHASE III : BURIAL AREAS AND CEMETERY IMPROVEMENTS	Date: 17 JULY 98
Subconsultant: R. O. COVINGTON & ASSOCIATES CONSULTING ENGINEERS Robert O. Covington PE #00641 225-A Municipal Airport Boring, FL 33830-9504 Phone: (813) 533-6292 Fax: (813) 533-1524 SH014	Approved: <i>VBA/VCB Team Project Director</i> William B. Zell Approved: <i>MCS Technical Support Service Director</i> Michele Zell	Building Number: 1401	Checked: ROC
		Drawn: KTH	Drawing No.: P-2
		Location: FLORIDA NATIONAL CEMETERY BUSHNELL, FLORIDA	Dep. 119 OF 134





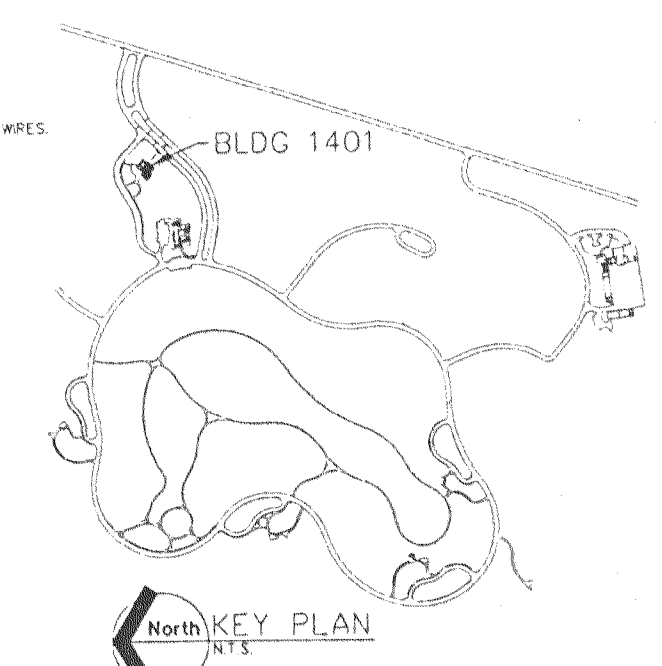
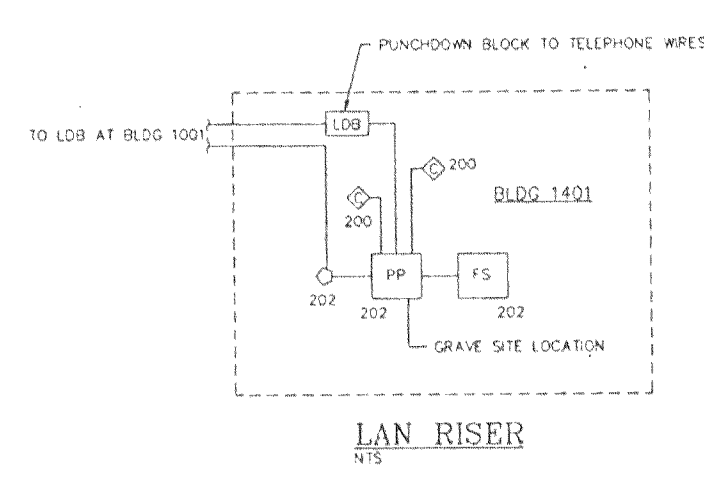
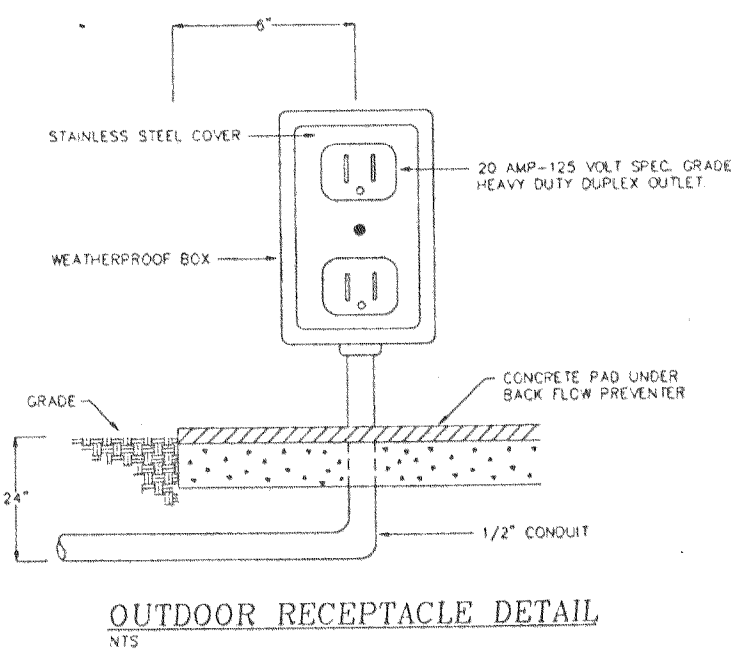
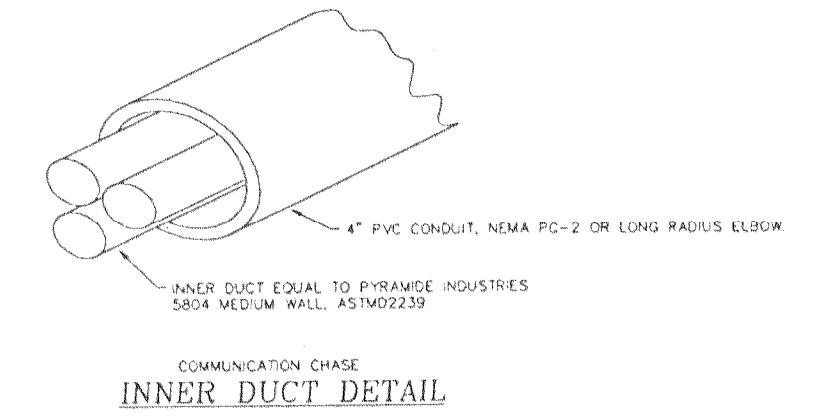
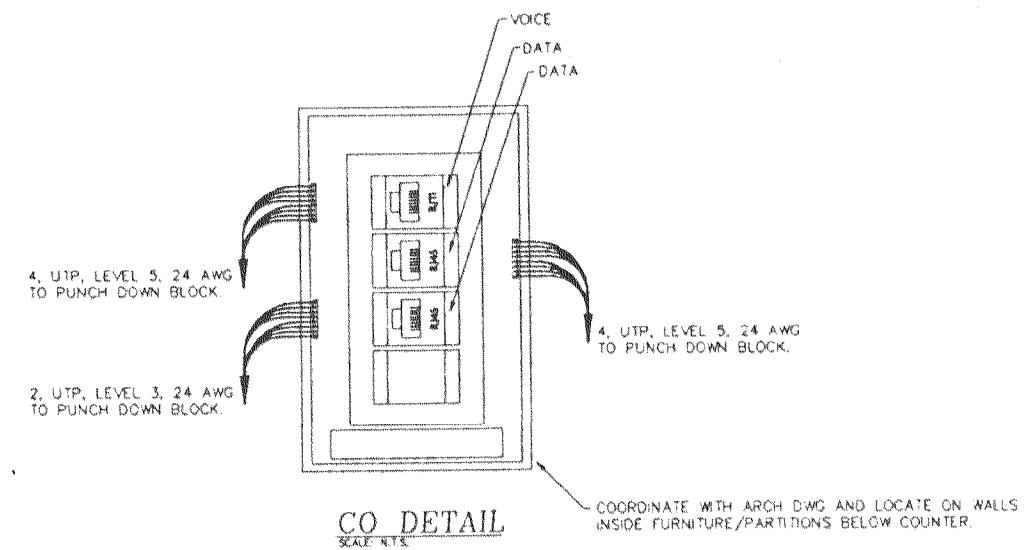
North
BLDG 1401 POWER PLAN
1/4" = 1'-0"

CONSTRUCTION NOTES:

- 1 POWER FEEDER UNDERGROUND PRIMARY BY POWER COMPANY, CONDUIT BY CONTRACTOR.
- 2 4" CONDUIT PARALLEL TO POWER CONDUIT WITH 3, 1" INNER DUCTS, ONE FOR TELEPHONE WITH 25 PAIR, 24 AWG UTP, LEVEL 3. ONE WITH 12-62.5/125 MULTIMODE FIBEROPTIC CABLE AND ONE SPARE.
- 3 24x24x8 PULL BOX MTD 36" AFF. 4" CONDUIT SHALL ENTER BOTTOM OF BOX VIA LONG RADIUS SWEEPS. 4 PAIR OF TELEPHONE WIRES SHALL TERMINATE ON PUNCH DOWN BLOCK FOR USE WITH LIGHTNING PROTECTION SYSTEM.
- 4 4" U.G. CONDUIT WITH 3, 1" INNER DUCTS, ONE FOR TELEPHONE WITH 25 PAIR REMAINING PAIR #24 AWG UTP, LEVEL 3 1 FOR F.O. AND ONE SPARE WITH PULL CORD.
- 5 STUB UP 4" CONDUIT 4" ABOVE FLOOR.
- 6 TELEPHONE WIRES SHALL TERMINATE ON 25 PAIR PUNCH DOWN BLOCK WITH SURGE SUPPRESSORS. EIGHT WIRES SHALL EXTEND TO PATCH PANEL. DATA WIRES SHALL TERMINATE ON PATCH PANEL. PATCH PANEL SHALL BE 16 RJ45 PORTS WITH SURGE SUPPRESSION MTD 60" AFF.
- 7 4" CONDUIT TO FLUSH FLOOR PULL BOX. TERMINATE INNER DUCT 2" INSIDE BOX.
- 8 MH CONTACTOR TO OPEN WITH ESIO OR SHUT OFF SWITCH (SW).
- 9 3 GANG ADJUSTABLE IN TABLE & PARTITIONED FLOOR BOX W/ COLLAR ASSEMBLY & COVER PLATES TO MATCH OUTLET INDICATED.
- 10 PROVIDE CONDUIT ROUTED UP TO CEILING OF ROOM 208 AND THEN TO AHU-5. PROVIDE BOX IN WALL FOR THERMOSTAT.
- 11 REMOTE LIGHTNING ALARM MODULE (SEE SHEET E-4).
- 12 MOTION DETECTOR IS MOUNTED ON BOTTOM OF TRUSS.
- 13 APPROXIMATELY 35 FT TO WP. GFI RECEPTACLE AT BACK FLOW PREVENTER SEE SHEET P5 (FOR HEAT TRACE BY OTHERS).

ROOM SCHEDULE

- 200 Lobby
- 201 Mechanical Room
- 202 Main Communications Cabling
- 203 Covered Terrace
- 204 Covered Loggia
- 205 Men
- 206 Women
- 207 Janitor Room
- 208 Mechanical Room



100% CONSTRUCTION DOCUMENTS

Consultants: EDSA Edward D. Stone, Jr. and Associates Planners and Landscape Architects 1512 E. Broward Boulevard, Suite 110 Fort Lauderdale, FL 33301 954 524-3330	Drawing Title: PUBLIC INFORMATION CENTER POWER PLAN AND DETAILS	Project Title: PHASE III: BURIAL AREAS AND CEMETERY IMPROVEMENTS	Date: 17 JULY 98	
Subconsultant: R. O. COVINGTON & ASSOCIATES CONSULTING ENGINEERS Robert O. Covington PE #01641 225-A Municipal Airport Sebring, FL 33830-1904 Phone: (841) 535-4292 Datto: (841) 535-1524 Fax: (841) 524-1723	Approved: <i>YBA/VCS Team Project Director</i> <i>William B. Zell</i>	Approved: <i>NCS Technical Support Service Director</i> <i>Maria O'Brien</i>	Drawing No.: E-3	Dwg. 126 Of 134

