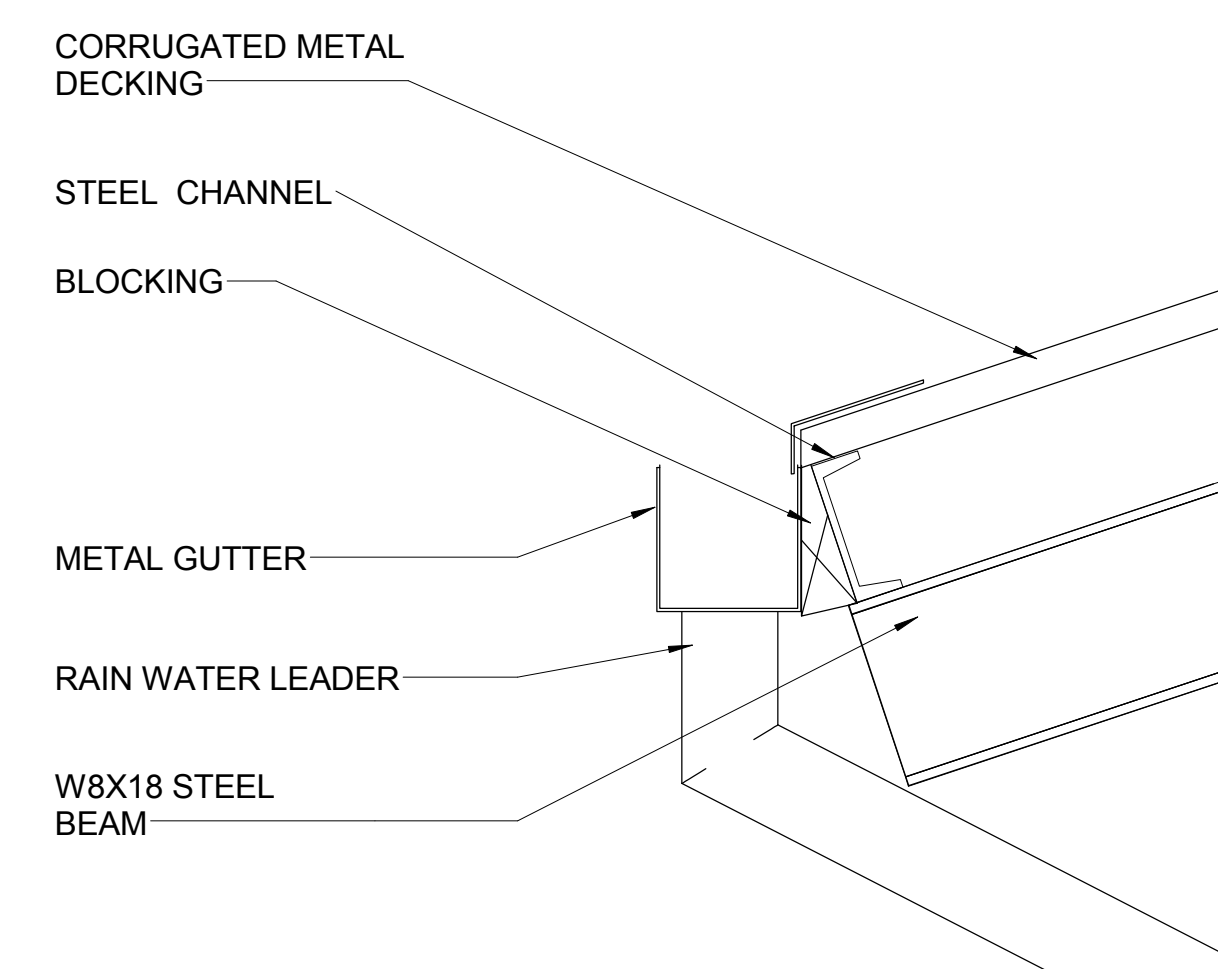
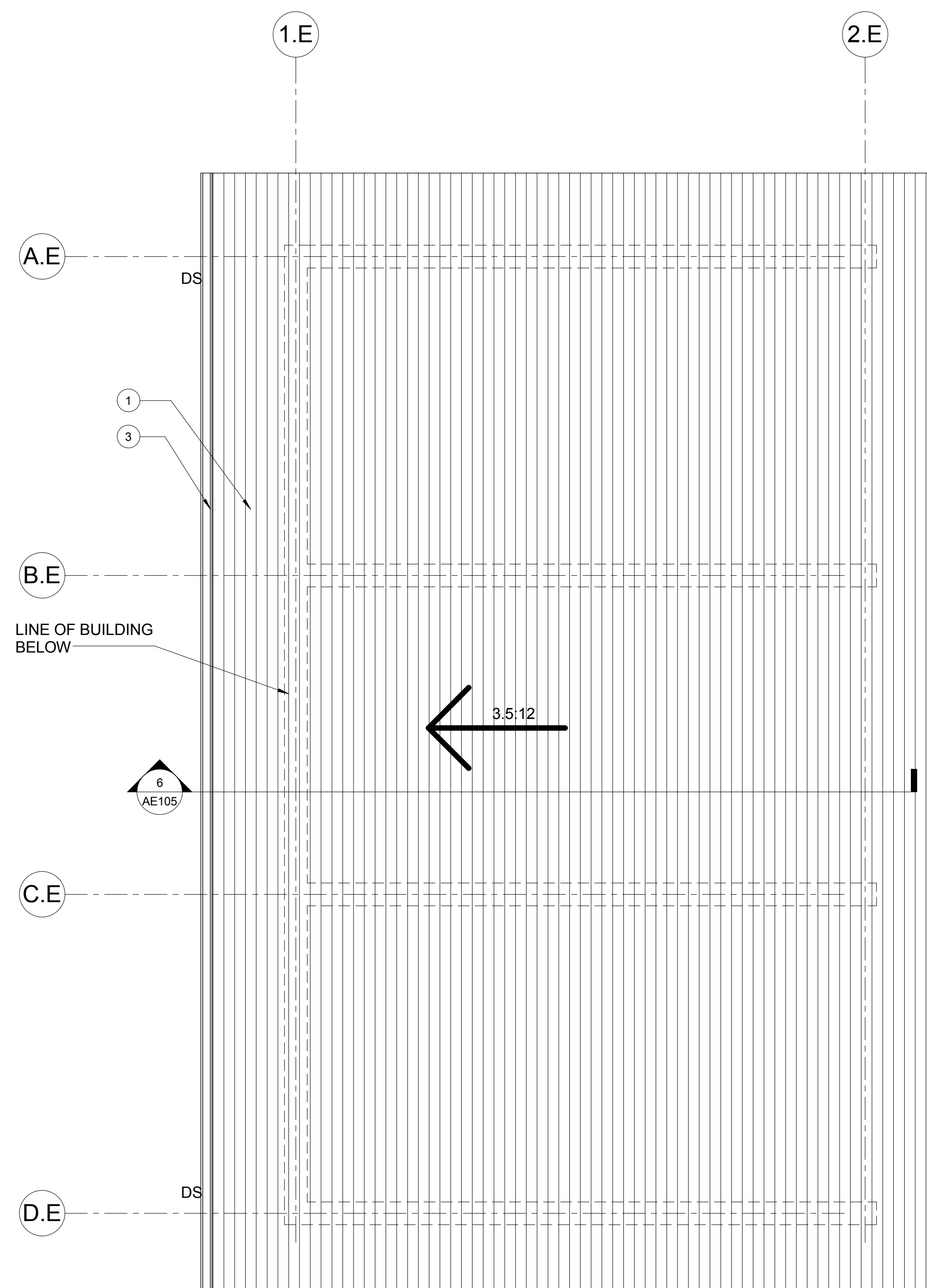
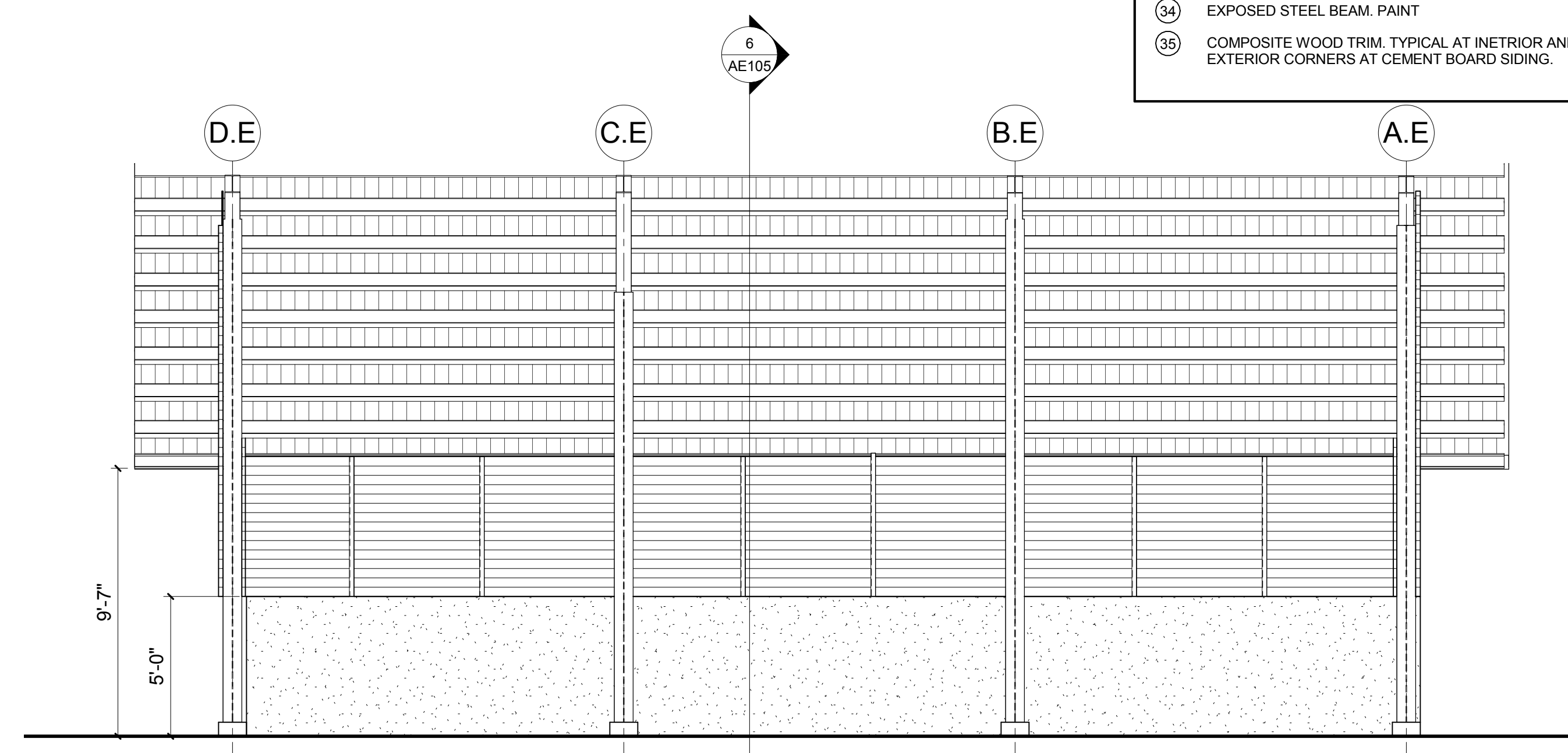


- ① STANDING SEAM METAL ROOF
- ② SNOW GUARD, TYP.
- ③ METAL GUTTER, TYP.
- ④ PREFINISHED METAL RAFTER- "MOCHA"
- ⑤ LIMESTONE SILL
- ⑥ BLUESTONE
- ⑦ ALVERSON LIMESTONE
- ⑧ NOT USED
- ⑨ SERVICE SEAL PLAQUES
- ⑩ CEMENT BOARD SIDING
- ⑪ METAL FASCIA/COLUMN WRAP- "CRUSHED ICE"
- ⑫ DIVIDED LITE ALUMINUM WINDOW SYSTEM WITH INSULATED GLAZING
- ⑬ CMU SPLIT FACE
- ⑭ RAIN WATER LEADER, TYP.
- ⑮ METAL WALL PANELS / GIRT SYSTEM
- ⑯ STEEL COLUMN WITH BASE PLATE
- ⑰ 12" POURED IN PLACE CONCRETE WALL
- ⑱ STEEL CHANNEL
- ⑲ W8X18 STEEL BEAM
- ⑳ STEEL PURLINS
- ㉑ LOUVER
- ㉒ PREFINISHED METAL- "MOCHA"
- ㉓ TRANSOM WINDOWS
- ㉔ OVERHEAD SECTIONAL DOOR
- ㉕ PIPE BOLLARD, TYP.
- ㉖ OPERABLE SECURITY SCREEN
- ㉗ TIG COMPOSITE WOOD CEILING
- ㉘ CEILING FAN
- ㉙ LIGHT SCONCES
- ㉚ HORIZONTAL CEMENT BOARD SOFFIT
- ㉛ INSULATED METAL DOOR
- ㉜ STOREFRONT, GLAZING AND TRANSOM
- ㉝ SAFETY TIE-BACK ANCHORS
- ㉞ EXPOSED STEEL BEAM, PAINT
- ㉟ COMPOSITE WOOD TRIM, TYPICAL AT INTERIOR AND EXTERIOR CORNERS AT CEMENT BOARD SIDING

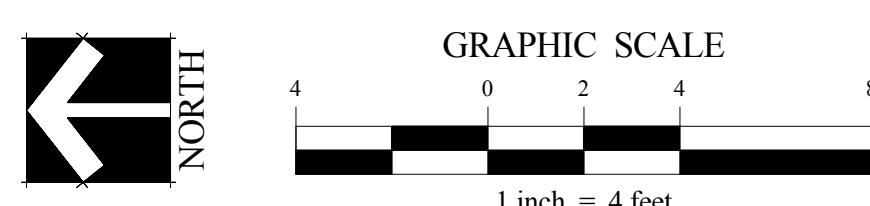


7 TYP. GUTTER DETAIL AT COVERED MATERIAL STORAGE SHED
1 1/2" = 1'-0"

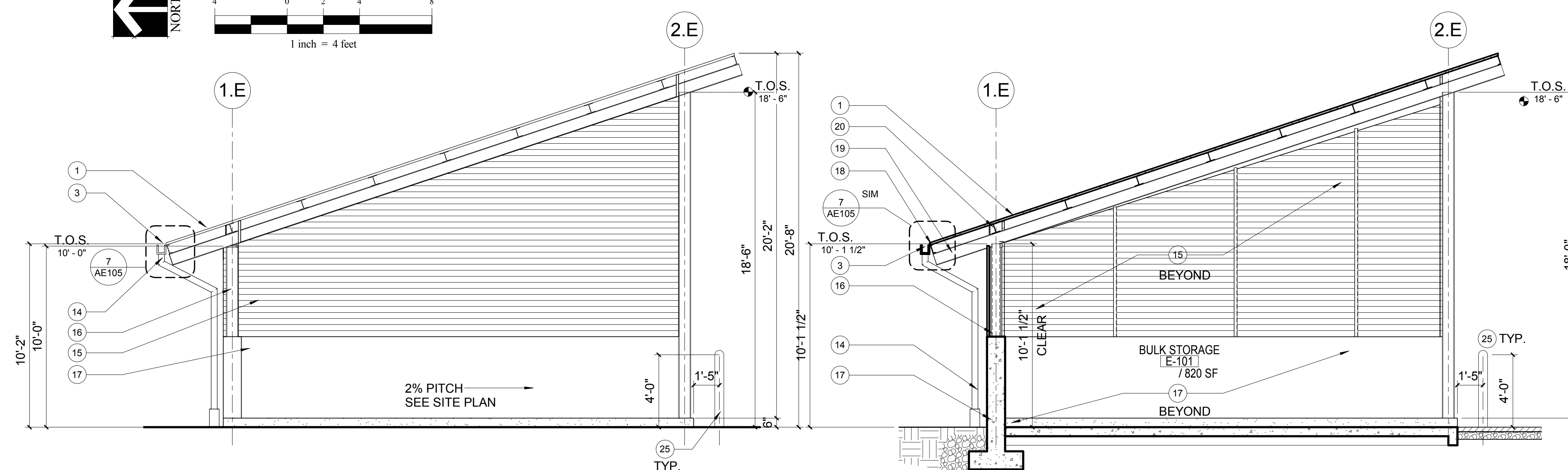


4 COVERED MATERIAL STORAGE BINS SOUTH ELEVATION
1/4" = 1'-0"

1 COVERED MATERIAL STORAGE BINS FLOOR PLAN
1/4" = 1'-0"

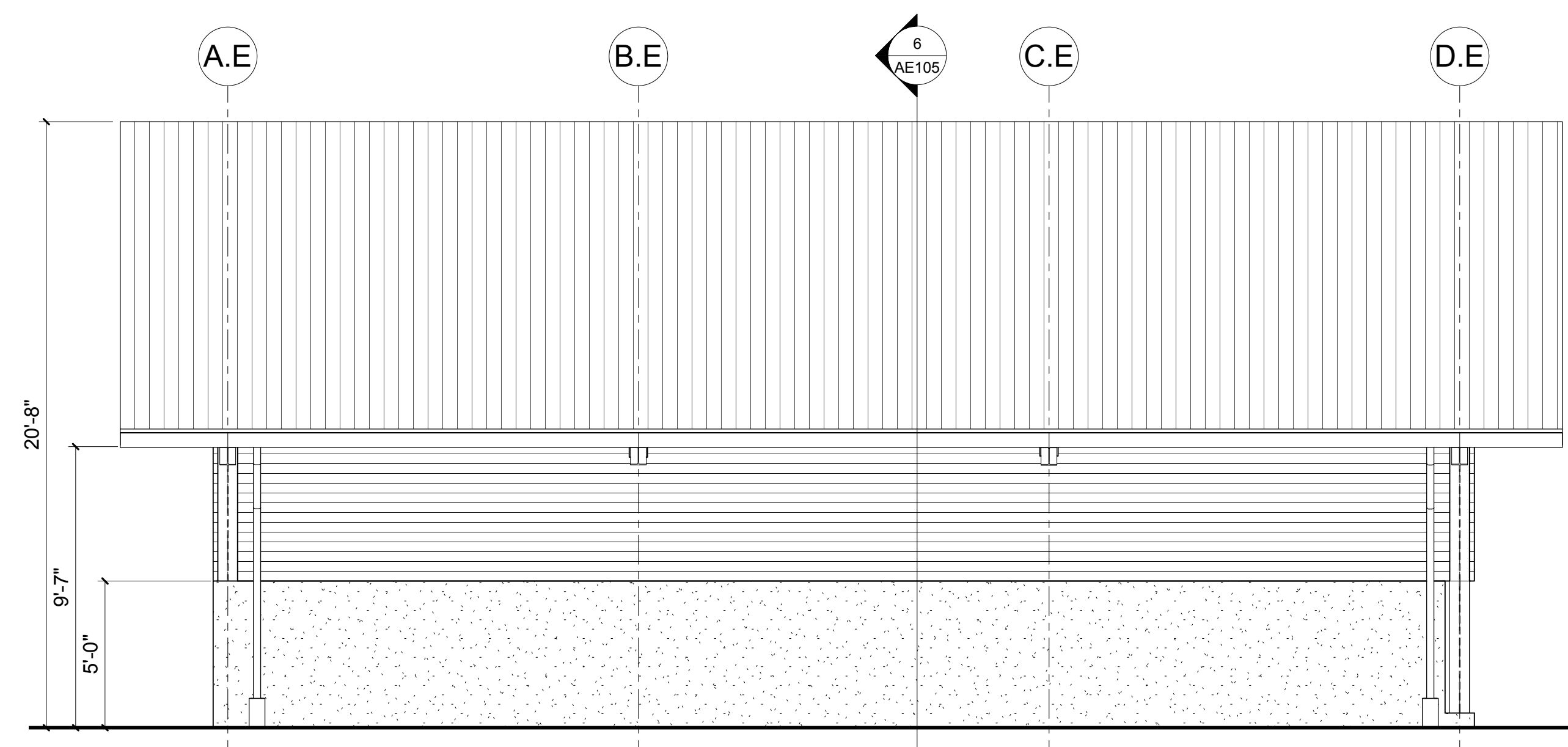


2 COVERED MATERIAL STORAGE BINS ROOF PLAN
1/4" = 1'-0"





3 COVERED MATERIAL STORAGE BINS EVALUATION

6 COVERED MATERIAL STORAGE BINS SECTION
1/4" = 1'-0"



5 COVERED MATERIAL STORAGE BINS VATION
1/4" = 1'-0"

		CONSULTANTS:		ARCHITECT/ENGINEER:		 NATIONAL CEMETERY ADMINISTRATION	Drawing Title COVERED MATERIAL STORAGE BINS		Project Title	Project Number	 Department of Veterans Affairs
								Building Number			
							Approved: Project Director		Location	Drawing Number	
							Date	Checked	Drawn	Dwg. of	
Revisions:	Date										