

F

G

H

LEGEND

EXISTING WALLS TO BE REMOVED

=====

NEW FULL HEIGHT WALL

XXXXXX

NEW 60" HIGH WALL

=====

EXISTING WALL TO REMAIN

=====

EXISTING COLUMN ENCLOSURE

UTILITY REQUIREMENTS	
Φ^{24}	120V OUTLET WITH EQUIPMENT NUMBER
Φ^{24}	208V OUTLET WITH EQUIPMENT NUMBER
Φ^3	SPARE OUTLET 120V
\odot^9	J-BOX WITH EQUIPMENT NUMBER
\square^9	MULTI J-BOX WITH EQUIPMENT NUMBER
\bullet^9	STUB UP WITH EQUIPMENT NUMBER
\blacktriangle	TELEPHONE JACK
Φ_c	COLD WATER INLET
Φ_h	HOT WATER INLET
Φ_d	DRAIN REQUIRED
Φ_g	GAS REQUIRED
Φ_s	STEAM REQUIRED
\equiv	ICS CONNECTION CABLE

IT REQUIREMENTS

OFFICE AREA:
FOUR NETWORK LINES:
A. HOSPITAL FURNISHED COMPUTER
B. HOSPITAL FURNISHED PRINTER
C. STATIC LINE FOR CASH REGISTER COMPUTER
D. STATIC LINE FOR CREDIT CARD DEVICE
TWO PHONE LINES:
A. TELEPHONE
B. BACK-UP CREDIT CARD DEVICE
FRONT COUNTER:
A. STATIC LINE LOCATED AT REGISTER
B. ONE PHONE LINE

FOOD SERVICE EQUIPMENT SCHEDULE															
EQUIPMENT SPECIFICATIONS					PREFERRED ENERGY SOURCE			PLUMBING		ALTERNATE ENERGY SOURCE			VENTILATION		
NO.	ITEM	MODEL	SIZE L/W/H	SUPPLIER	ELECTRICAL WALL VOLTS	POWER KW/AMPS	STEAM	GAS	WATER HOT COLD	WASTE	ELEC	STEAM	GAS	GREASE LADEN	HEAT OF EXHAUST AIR
6	CONDIMENT STAND (2)	FABRICATED	60/30/45	KC											
7	CONDIMENT DISPENSER PUMP (2)	SERVER PRODUCTS	13/17/16	KC											
9	STATION SIGN (8)	HOWARD	48/3/24	KC											
12	REGISTER STAND	FABRICATED 2 TRAY SLIDES	56/120/49	KC	STUB UP	120/1 15A	DEDICATED	CLEAN LINE	REQD.						
13	REGISTER STAND (2)	FABRICATED 1 TRAY SLIDE	44/60/49	KC	STUB UP	120/1 15A	DEDICATED	CLEAN LINE	REQD.						
14	REGISTER STAND (2)	FABRICATED 1 TRAY SLIDE	44/60/49	KC	STUB UP	120/1 15A	DEDICATED	CLEAN LINE	REQD.						
17	TRAY DISPENSER (6)	DUKE	25/24/58	KC											
B1	BEVERAGE COUNTER	FABRICATED	114/46/34	KC	12" AFF	120/1 6.2A								INCLUDE POWER FOR B8, B9	* SEE NOTE BELOW
B2	BEVERAGE COUNTER	FABRICATED	148/46/34	KC	12" AFF	120/1 6.2A								INCLUDE POWER FOR B8, B9	* SEE NOTE BELOW
B6	COLD CUP DISPENSER (4)	DISPENSE-RITE WR-CT-4	7/20/24	KK											
B7	HOT CUP DISPENSER (3)	DISPENSE-RITE WR-CT-3	7/20/19	KK											
B8	BEVERAGE/ICE DISPENSER (3)	PROVIDED BY COKE	30/30/38	KC	12" AFF	120/1 2.5A			1/2"	FLOOR DRAIN					
B8A	ICE MACHINE (3)	HOSHIZAKI KMD-450MAH	30/24/22	KC	12" AFF	120/1 15A			1/2"	FLOOR DRAIN					
B9	GOLD PEAK TEA DISPENSER	PROVIDED BY COKE VENDOR	9/18/34	KC	12" AFF	120/1 2.5A			1/4"						
B10	COFFEE BREWER (2)	BUNN - TWIN AXIOM BREWER	22/22/37	KC	12" AFF	208V 1-phase 26A			3/8"					(3-Wires + Ground)	
CE1	CHICKEN EXPRESS COUNTER	FABRICATED W/6 HOT	96/46/34	KC	40" AFF	208/1 42A			X	X					
CC2	1 SECTION WARMER (3)	ALTO SHAM 1200-UP/STD	22/27/74	KC	48" AFF	120/1 16A			NEMA 5-20P						
CR1E	ROTISSERIE * MERCHANDISING BASE	HENNY PENNY SCF-800 (EXISTING)	40/34/36	KC											
CR2E	ROTISSERIE * COUNTERTOP ELECTRIC	HENNY PENNY SCR-6 (EXISTING)	32/26/33	KC	40" AFF	208/1 33A			NEMA 6-50P						
ES1	ENTREES & SIDES COUNTER	FABRICATED W/ 8 HOT WELLS	132/46/34	KC	12" AFF	208/1 41A			X	X					
FC1	FROM THE GARDEN COUNTER	FABRICATED W/ 6 COLD WELLS	96/44/34	KC	12" AFF	120/1 12A									
HC1	MIN UPRIGHT ICE CREAM FREEZER	NESTLE MMET 77" W-1001N	27/28/77	KC	12" AFF	115/1 9.8A									
K12	HEATED SELF-SERVER CASE (2)	STRUCT CONCEPTS B3632H-4	36/32/82	KC	48" AFF	208/123.54A									* SEE NOTE BELOW
K13	REFRIGERATED SELF-SERVER CASE	STRUCT CONCEPTS B4732	48/32/82	KC	48" AFF	208/1 10.2A			NEMA 6-20P						* SEE NOTE BELOW
K14	REFRIGERATED SELF-SERVER CASE (3)	STRUCT CONCEPTS B5932	58/32/82	KC	48" AFF	208/1 11.9A			NEMA 6-20P						* SEE NOTE BELOW
K15	REFRIGERATED SELF-SERVER CASE (2)	STRUCT CONCEPTS B8832	68/32/82	KC	48" AFF	208/1 20A			NEMA 6-30P						* SEE NOTE BELOW
K16	REFRIGERATED SELF-SERVER CASE	STRUCT CONCEPTS B7132	71/32/82	KC	48" AFF	208/1 14.3A			NEMA 6-20P						
K17	REFRIG WORK TABLE (2)	TRUE TWT-60	60/30/33	KC	18" AFF	115/1 5.1A									
K18	2 SECTION REFRIGERATOR (4)	TRUE TS-35	39/29/78	KC	48" AFF	115/1 7.3A									
K19	1 SECTION FREEZER	TRUE TS-23F	27/29/78	KC	48" AFF	115/1 10.4A									
K20	REFRIG WORK TABLE	TRUE TWT-67	67/32/33	KC	18" AFF	115/1 5.1A									
K41	LOCKABLE STORAGE CABINET	VGS BUYOUT	48/18/24	KC											
K46	CO2/SYRUP LINE CONDUIT			CG											
M1	MERCHANDISER -	ALTO-SHAM	38/27/64	KC	12" AFF	208/1 19A			NEMA 6-20P						
OG1	OFF THE GRILL COUNTER	FABRICATED W/5 HOT/3 COLD	144/46/34	KC	12" AFF	208/1 50A			3/8"	3/4"				INCLUDE POWER FOR OG2	* SEE NOTE BELOW
OG2	2-DRAWER WARMER (BUILT-IN)	HATCO HDW-2B	28/24/20	KC	BUILT IN										* SEE NOTE BELOW
OG3	HOLDING BIN	DUKE FWM3-42	21/16/22	KC	40" AFF	120/1 13.3A									
OG4	TOASTER W/ STAND	TOASTMASTER TG17D3	15/23/15	KC	40" AFF	208/1 16.2A									
OG5	DUMP TABLE W/ HEAT LAMP	FRYMASTER	16/36/40	KC	18" AFF	120/1 6.9A									
OG10	GRIDDLE	KEATINGE 48x30 G	48/30/36	KC					120K 3/4"		X			X	
OG11E	GRIDDLE	KEATINGE 36x30 E (EXISTING)	36/30/36	KC	18" AFF	208/3 8KW 22A								X	X
OG14	FRYER (3)	FRYMASTER FPPE17	19/30/49	KC	18" AFF	208/3 17KW 48A									
P1	REFRIGERATED SELF-SERVER CASE	STRUCT CONCEPTS PSC40R	46/61/61	KC	48" AFF	220/1 16.6A			NEMA 11-20P					FLOOR DRAIN	
P5	BAKERY DISPLAY CASE	STRUCT CONCEPTS CSF4231	42/36/68	KC	48" AFF	120/1 1A									
P6	BAKERS RACK (2)	HUBERT 13639	22/12/66	KC											
SG1	SIMPLY TO GO	FABRICATED W/ REFRIGERATION BELOW	69/34/34	KC	12" AFF	120/1 23A			3/8"	3/4"					
SW1	SUBS & WRAPS COUNTER	FABRICATED W/8 COLD WELLS	156/46/34	KC	12" AFF	208/1 20A			3/8"	3/4"					* SEE NOTE BELOW
SW2	ENCORE OVEN (2)	TURBO-CHEF ENCORE	33/22/19	KC	BUILT IN										
SW3	BREAD RACK (2)	HUBERT 13639	21/27/69	KC											
SW4	DELI OVEN WITH PROOFER	DOYON - JADP6-SL	37/18/73	KC	40" AFF	208/2 46A			1/4"					X	
TS1	TRAY STAND (3)	FABRICATED	SEE PLAN/24	KC											
X1	HOOD	CC ITEM	96/48/34	CC											
X2	HOOD	CC ITEM	56/41/34	CC											

CC = MEDICAL CENTER SUPPLY AND INSTALL
KC = CANTEN SUPPLY AND MEDICAL CENTER INSTALL
KK = CANTEN SUPPLY AND INSTALL

PLEASE CONTACT PAMELA SHELTON AT 314-845-1497 FOR QUESTIONS REGARDING THE FINAL HOOK UP OF THE CASH REGISTERS.

DATE	REVISIONS	NAME
03/17/15	UPDATED PLAN TO INCLUDE A SIMPLY 2 GO CONCEPT	JMB
06/07/17	UPDATED EQUIPMENT	JMB

COORDINATIONS	DATE
---------------	------

DRAWN BY: MRF
CHECKED BY:
APPROVED: MEDICAL CENTER DIRECTOR

DRAWING TITLE
RECONFIGURE PATRIOT CAFE

LOCATION
LOS ANGELES, CA

PROJECT NUMBER
196102-F-13

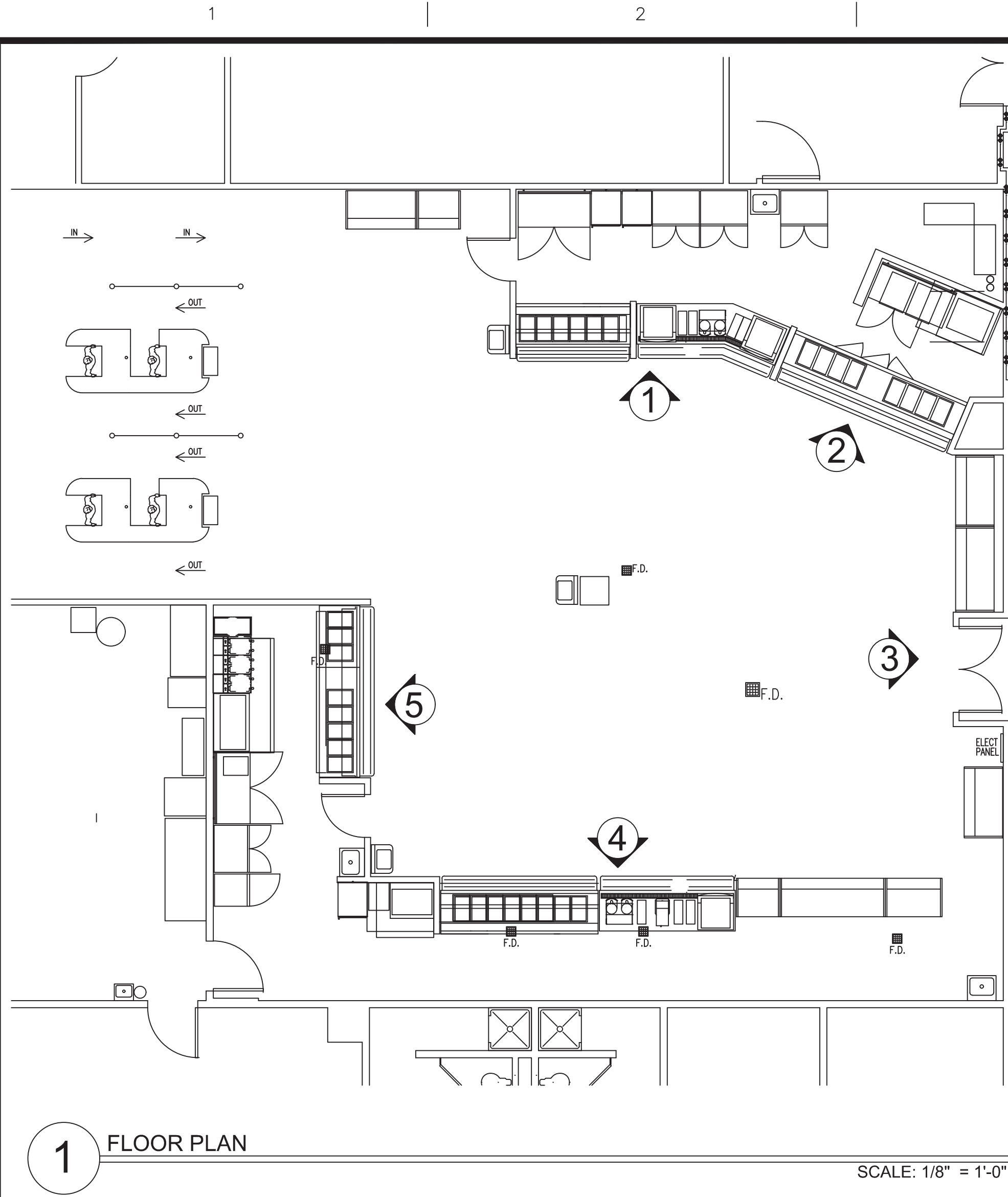
DATE
10/31/13

DRAWING NO.
196102

DWG. 51 of 53

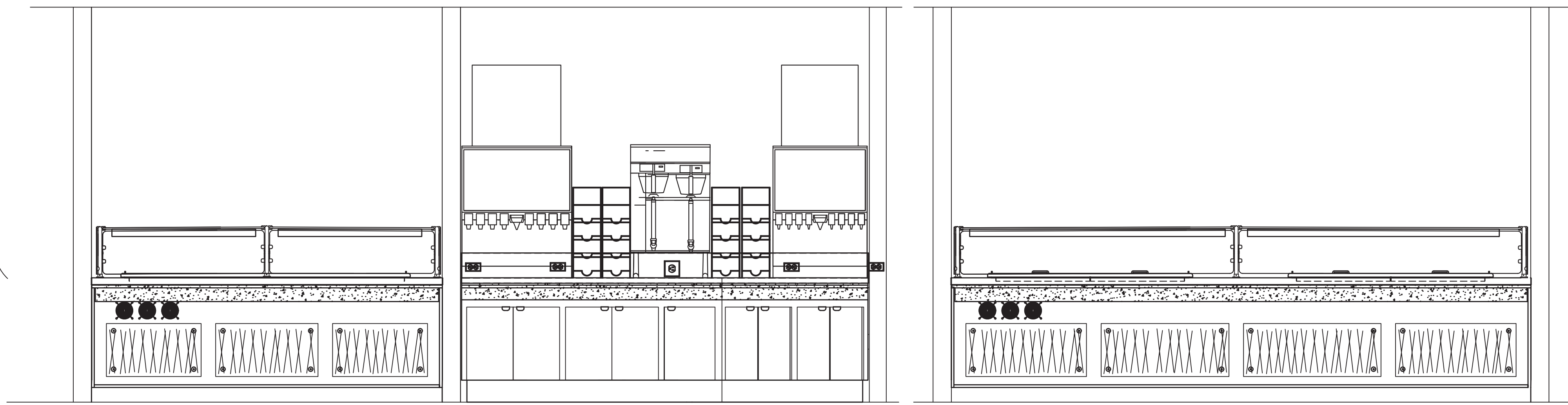
SCALE
1/4" = 1'

T:\Engineering\BMP\B12\12VCS_196102_F13.dwg



1 FLOOR PLAN

SCALE: 1/8" = 1'-0"

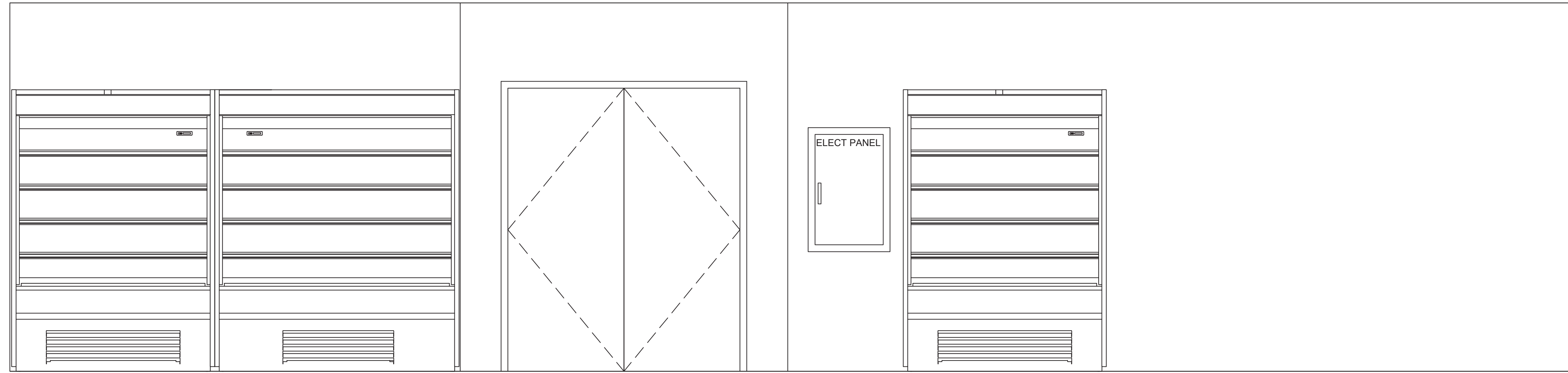


1 CHICKEN EXPRESS/BEVERAGE COUNTER

SCALE: 1/2" = 1'-0"

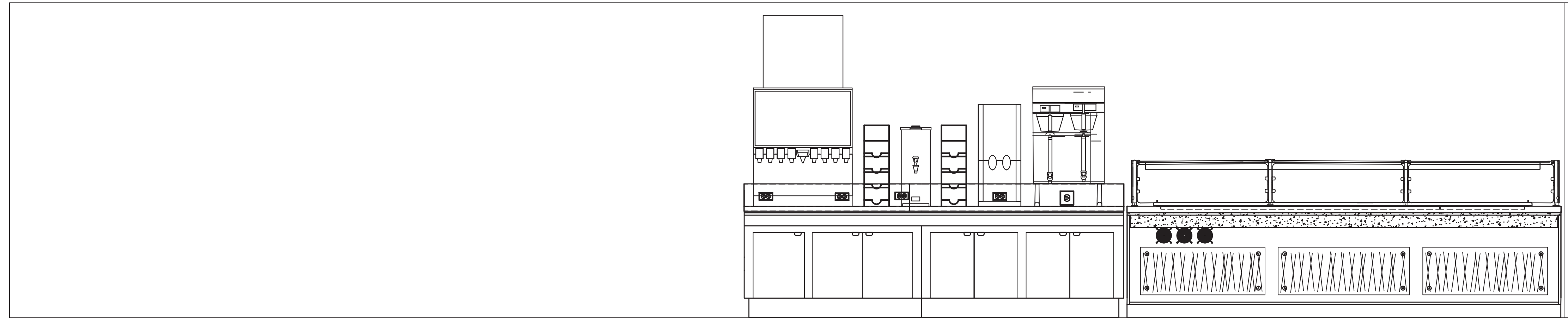
2 CUTTING BOARD COUNTER

SCALE: 1/2" = 1'-0"



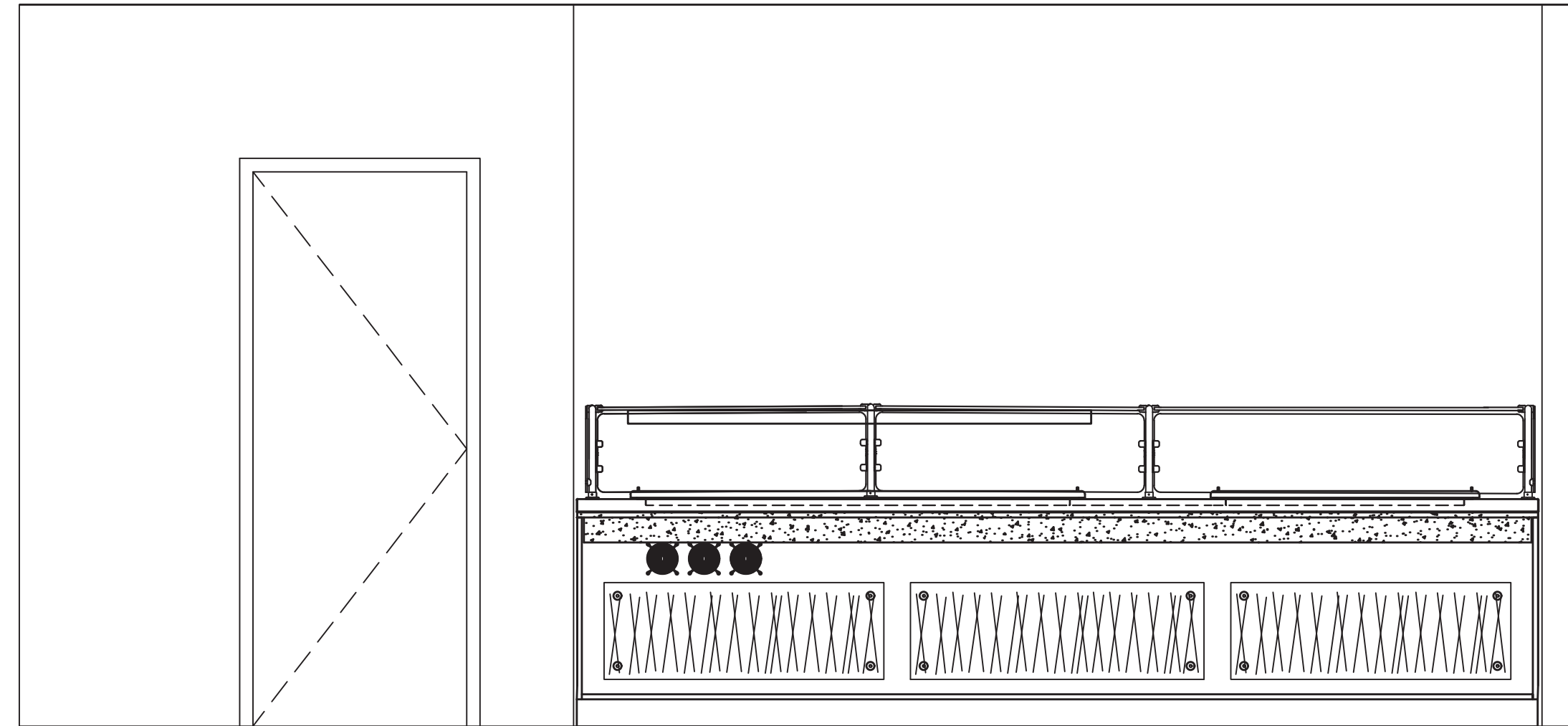
3 SIMPLY TO GO (COLD)

SCALE: 1/2" = 1'-0"



4 SIMPLY TO GO (COLD/HOT) /BEVERAGE COUNTER/ENTREES AND SIDES

SCALE: 1/2" = 1'-0"



5 OFF THE GRILL

SCALE: 1/2" = 1'-0"

DATE	REVISIONS	NAME
------	-----------	------

COORDINATIONS	DATE
---------------	------

DRAWN BY:	CHECKED BY:
JAB	

APPROVED: MEDICAL CENTER DIRECTOR

DRAWING TITLE
NEW VCS FOOD
COURT ELEVATIONS

LOCATION
LOS ANGELES, CA

PROJECT NUMBER
196102-EL (F)-17


DATE
6/27/17

SCALE
1/4" = 1'

DRAWING NO.
196102

T:\Engineer\PROJECTS\VCS_Logo_Final.jpg

DWG. 52 of 53



1	6/9/14	ADDED TRASH COMPACTOR	RJK
2	4/14/15	MOVED SHOP LOCATION	JMB
3	7/21/17	KEPT @ EXTG LOCATION	JMB

COORDINATIONS		DATE
DRAWN BY:		CHECKED BY:
MRF		
APPROVED: MEDICAL CENTER DIRECTOR		
DRAWING TITLE		
RECONFIGURE PATRIOT BREW & VENDING		
LOCATION		
LOS ANGELES, CA		
PROJECT NUMBER		
196104-SB-13		
DATE	SCALE	
10/31/13	1/4" = 1'	
DRAWING NO.		
196104_3	T:\Engineer\ SUPPORT\ ECVCS_logo_first.jpg	

DRAWN BY: MRF	CHECKED BY:
-------------------------	-------------

APPROVED: MEDICAL CENTER DIRECTOR

DRAWING TITLE

RECONFIGURE
PATRIOT BREW & VENDING

LOCATION
LOS ANGELES, CA

PROJECT NUMBER
196104-SB-13

DATE 10/31/13	SCALE 1/4" = 1'
------------------	--------------------

DRAWING NO.	
196104_3	T:\Engineer\SUPPORT2\VCS_logo_final.jpg
50 of 50	