

Anthony Electric Inc.

Electrical Contractor · Engineering

POWER LOAD RECORDER REPORT

Panel: **DB1B**

30 Day recording

277/480 volt

3Phase 4Wire

350 MCM feeders

3/0 Neutral

**JOB SITE: VA Hospital
Cafeteria Remodel
11301 Wilshire Blvd.
Los Angeles, Ca. 90073**

DATE: 10.06.17

PROJECT #:

10207 Freeman Avenue · Santa Fe Springs, California 90670

Phone No: (562) 941-6380 · Fax No: (562) 941-6382

California License: 658468 C-10 · Arizona License: 191128 L-11

Dist. Board DB1B 30 Day

Power Study Summary

Dist. Board DB1B 30 Day

Test began at 09.05.17 08:28:00

Test ended at 10.06.17 10:28:00

Measurement	Value	Units
Voltage, Phase 1, Avg:	275.2	volts
Voltage, Phase 1, Max:	288.8	volts
Voltage, Phase 1, Min:	252.5	volts
Voltage, Phase 2, Avg:	275.1	volts
Voltage, Phase 2, Max:	294.1	volts
Voltage, Phase 2, Min:	252.4	volts
Voltage, Phase 3, Avg:	275.8	volts
Voltage, Phase 3, Max:	293.0	volts
Voltage, Phase 3, Min:	253.4	volts
Current, Phase 1, Avg:	358.0	amps
Current, Phase 1, Max:	606.2	amps
Current, Phase 1, Min:	234.2	amps
Current, Phase 2, Avg:	320.5	amps
Current, Phase 2, Max:	566.3	amps
Current, Phase 2, Min:	206.7	amps
Current, Phase 3, Avg:	341.5	amps
Current, Phase 3, Max:	583.2	amps
Current, Phase 3, Min:	221.1	amps
Current, Neutral, Avg:	31.6	amps
Current, Neutral, Max:	68.4	amps
Current, Neutral, Min:	19.3	amps
Power Factor, Phase 1, Avg:	0.93	
Power Factor, Phase 1, Max:	0.98	
Power Factor, Phase 1, Min:	0.71	
Power Factor, Phase 2, Avg:	0.91	
Power Factor, Phase 2, Max:	0.96	
Power Factor, Phase 2, Min:	0.69	
Power Factor, Phase 3, Avg:	0.89	
Power Factor, Phase 3, Max:	0.94	

Power Factor, Phase 3, Min:	0.67	
Power Factor, Total, Avg:	0.91	
Power Factor, Total, Max:	0.96	
Power Factor, Total, Min:	0.69	
True Power, Phase 1, Avg:	92.173K	Watts
True Power, Phase 1, Max:	143.974K	Watts
True Power, Phase 1, Min:	61.389K	Watts
True Power, Phase 2, Avg:	79.960K	Watts
True Power, Phase 2, Max:	127.898K	Watts
True Power, Phase 2, Min:	51.002K	Watts
True Power, Phase 3, Avg:	83.623K	Watts
True Power, Phase 3, Max:	134.298K	Watts
True Power, Phase 3, Min:	53.606K	Watts
True Power, Total, Avg:	255.808K	Watts
True Power, Total, Max:	404.634K	Watts
True Power, Total, Min:	169.779K	Watts
VA Power, Phase 1, Avg:	98.503K	VA
VA Power, Phase 1, Max:	164.198K	VA
VA Power, Phase 1, Min:	65.331K	VA
VA Power, Phase 2, Avg:	88.160K	VA
VA Power, Phase 2, Max:	154.163K	VA
VA Power, Phase 2, Min:	57.395K	VA
VA Power, Phase 3, Avg:	94.152K	VA
VA Power, Phase 3, Max:	158.618K	VA
VA Power, Phase 3, Min:	61.389K	VA
VA Power, Total, Avg:	280.866K	VA
VA Power, Total, Max:	471.859K	VA
VA Power, Total, Min:	187.802K	VA
VAR Power, Phase 1, Avg:	34.452K	VAR
VAR Power, Phase 2, Avg:	36.922K	VAR
VAR Power, Phase 3, Avg:	43.113K	VAR
VAR Power, Total, Avg:	212.227K	VAR
Frequency, Total, Avg:	60.0	Hz
Frequency, Total, Max:	61.0	Hz
Frequency, Total, Min:	58.5	Hz
Energy, Phase 1 Elapsed:	68.756K	KWh
Energy, Phase 2 Elapsed:	59.647K	KWh
Energy, Phase 3 Elapsed:	62.378K	KWh
Energy, Total Elapsed:	190.820K	KWh
VAH, Phase 1 Elapsed:	73.479K	VAh

VAH, Phase 2 Elapsed:	65.764K	VAh
VAH, Phase 3 Elapsed:	70.233K	VAh
VAH, Total Elapsed:	209.514K	VAh
Energy, estimated per month:	184.169K	KWH
Utility Rate:	0.1347	\$/KWH
Cost, Total Elapsed:	25.703K	\$
Cost, estimated per month:	24.808K	\$
Peak Demand:	348.160K	Watts
Peak Demand Period, KW:	09/19/17 @ 10:43:00	
Peak Avg VA:	369.152K	VA
Peak Demand Period, KVA:	09/19/17 @ 10:43:00	

Report Prepared by: Sean O'Dell
Anthony Electric Inc.
10207 Freeman Ave.
Santa Fe Springs, Ca. 91770

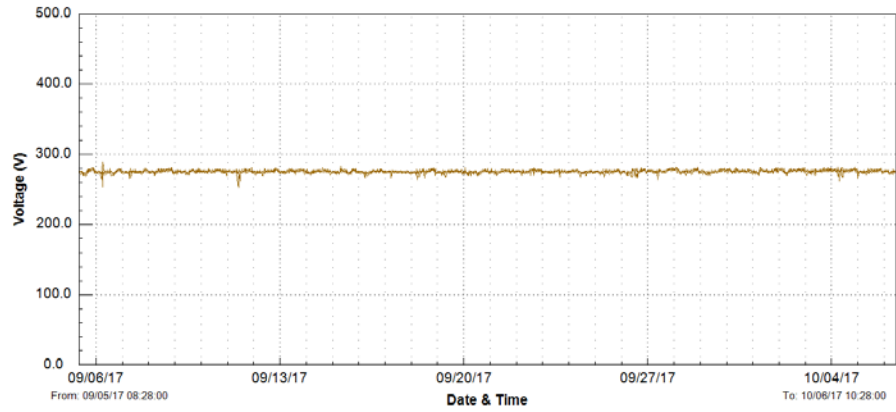
Phone: 1-323-485-2828

Email: sean@anthonyelectric.com

Data Log

Data Log View of C:\Users\Sean\Desktop\VA Hospital Job 17-261\Dist Board DB1B\Dist. Board DB1B 30 Day SLO

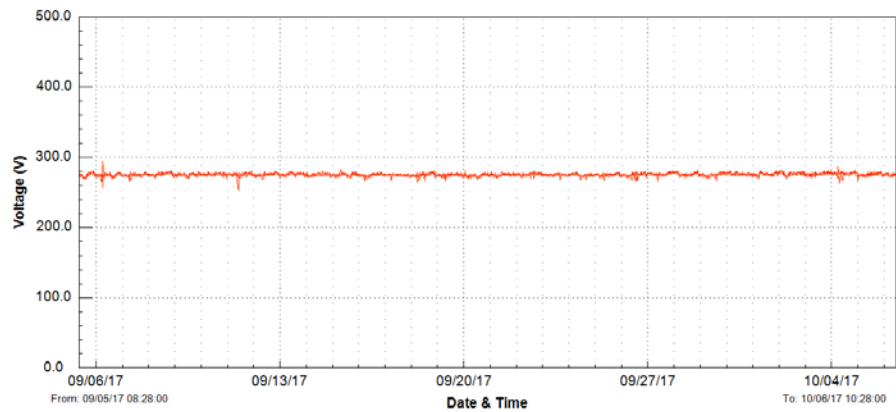
V1n Avg	V1n Max	V1n Min
275.2	288.8	252.5



Data Log

Data Log View of C:\Users\Sean\Desktop\VA Hospital Job 17-261\Dist Board DB1B\Dist. Board DB1B 30 Day SLO

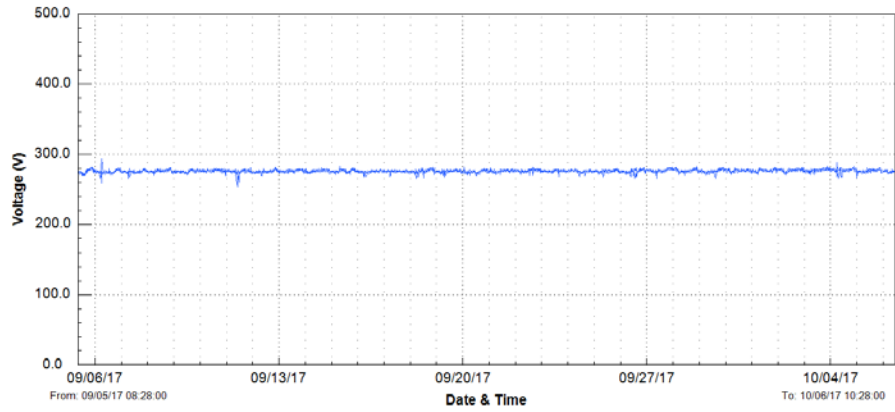
V2n Avg	V2n Max	V2n Min
275.1	294.1	252.4



Data Log

Data Log View of C:\Users\Sean\Desktop\VA Hospital Job 17-261\Dist Board DB1B\Dist. Board DB1B 30 Day SLO

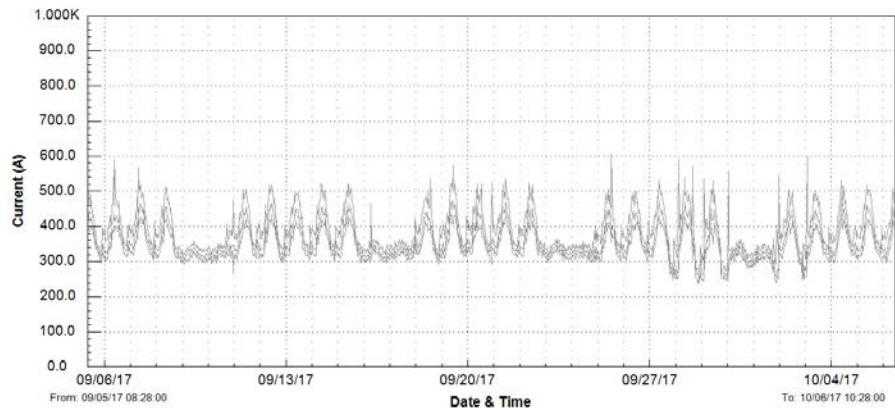
V3n Avg 275.8
V3n Max 293.0
V3n Min 253.4



Data Log

Data Log View of C:\Users\Sean\Desktop\VA Hospital Job 17-261\Dist Board DB1B\Dist. Board DB1B 30 Day SLO

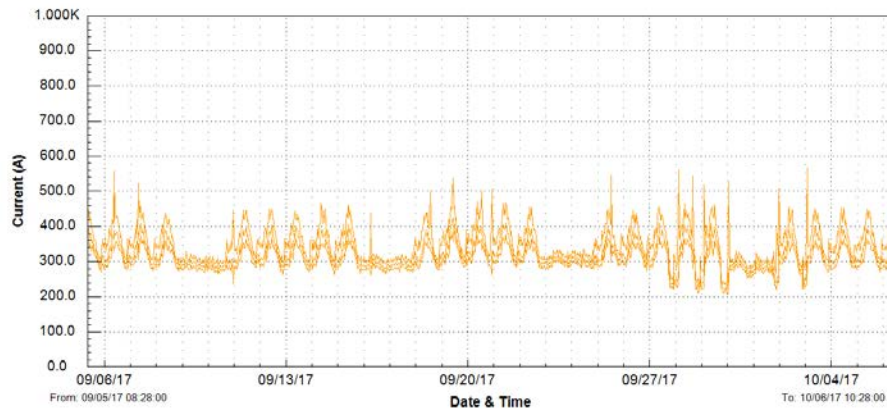
I1 Avg 358.0
I1 Max 606.2
I1 Min 234.2



Data Log

Data Log View of C:\Users\Sean\Desktop\VA Hospital Job 17-261\Dist Board DB1B\Dist. Board DB1B 30 Day SLO

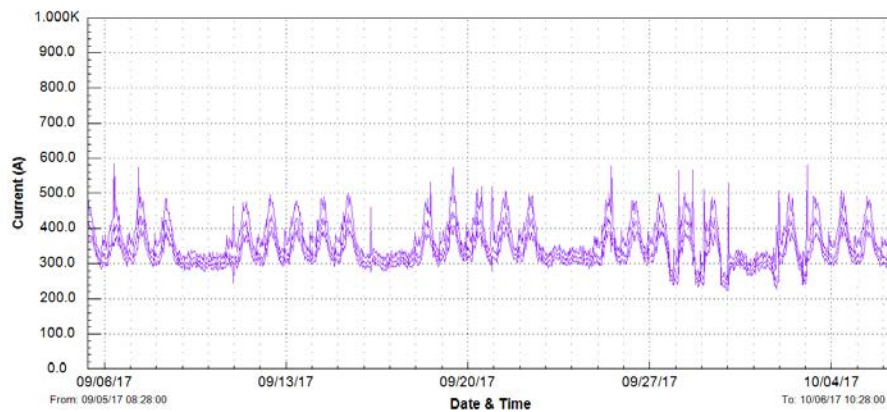
I2 Avg 320.5
I2 Max 566.3
I2 Min 206.7



Data Log

Data Log View of C:\Users\Sean\Desktop\VA Hospital Job 17-261\Dist Board DB1B\Dist. Board DB1B 30 Day SLO

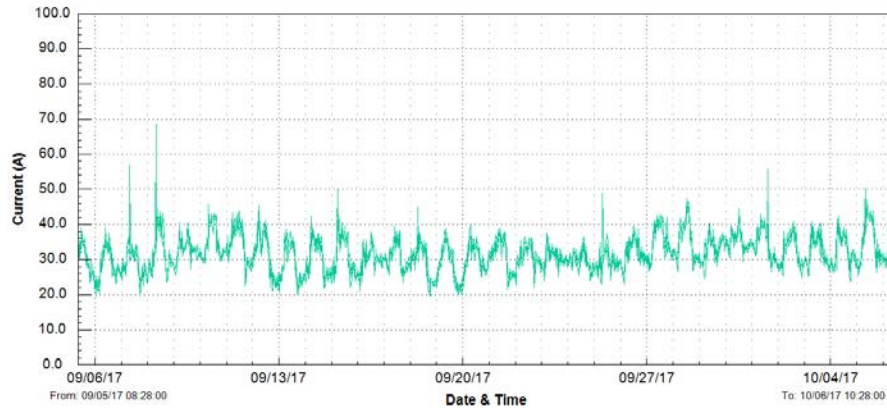
I3 Avg 341.5
I3 Max 583.2
I3 Min 221.1



Data Log

Data Log View of C:\Users\Sean\Desktop\VA Hospital Job 17-261\Dist Board DB1B\Dist. Board DB1B 30 Day SLO

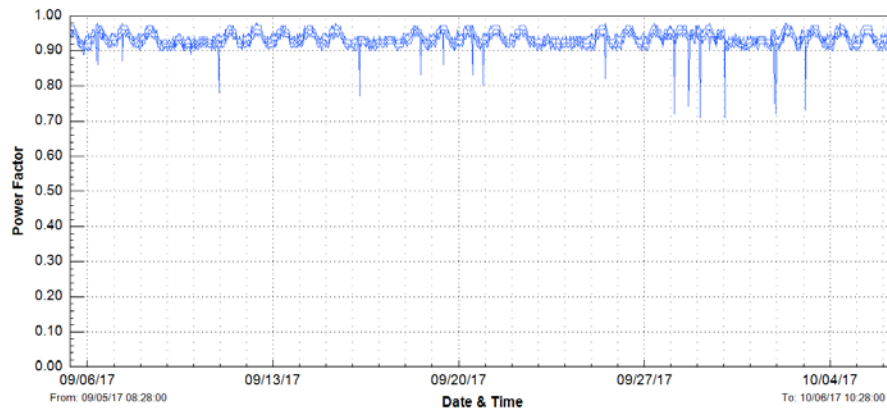
In Avg 31.6
In Max 68.4
In Min 19.3



Data Log

Data Log View of C:\Users\Sean\Desktop\VA Hospital Job 17-261\Dist Board DB1B\Dist. Board DB1B 30 Day SLO

PF1 Avg 0.93
PF1 Max 0.98
PF1 Min 0.71



Data Log

Data Log View of C:\Users\Sean\Desktop\VA Hospital Job 17-261\Dist Board DB1B\Dist. Board DB1B 30 Day SLO

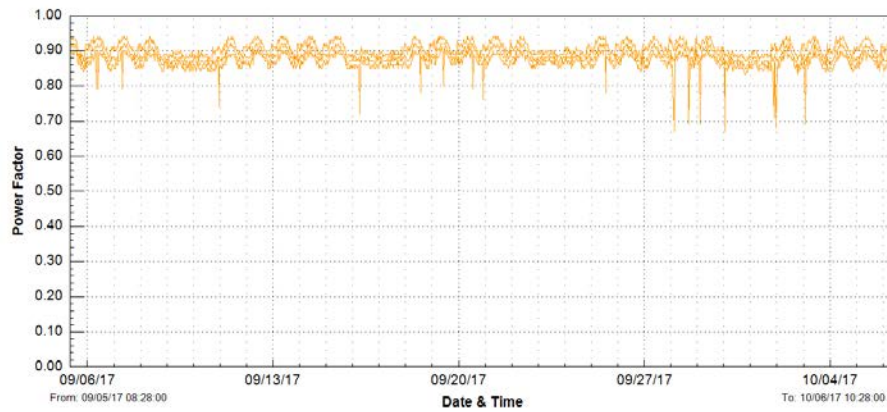
PF2 Avg 0.91
PF2 Max 0.96
PF2 Min 0.69



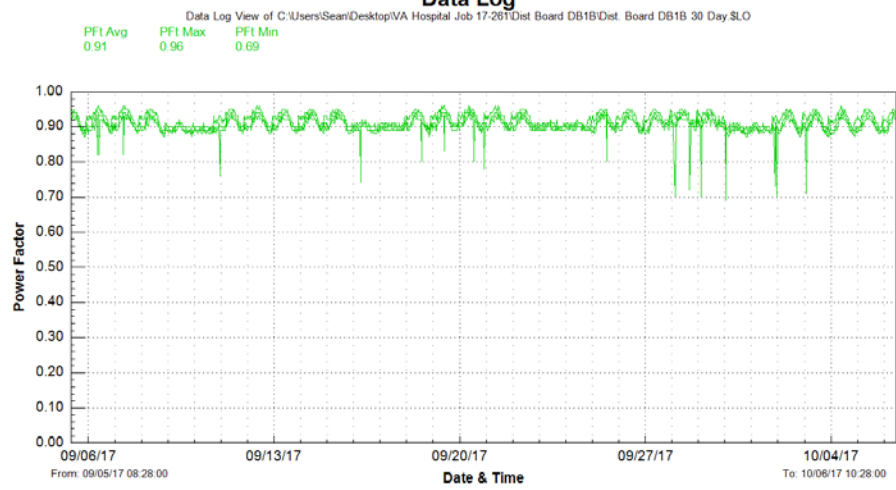
Data Log

Data Log View of C:\Users\Sean\Desktop\VA Hospital Job 17-261\Dist Board DB1B\Dist. Board DB1B 30 Day SLO

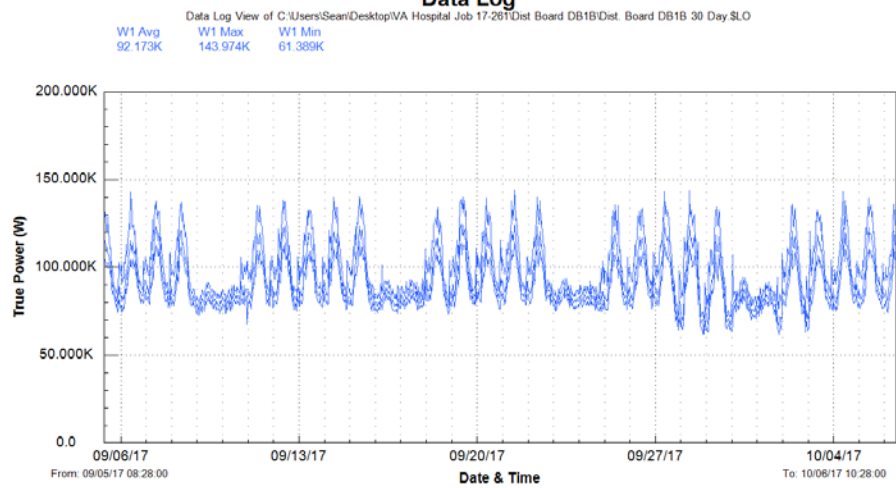
PF3 Avg 0.89
PF3 Max 0.94
PF3 Min 0.67



Data Log



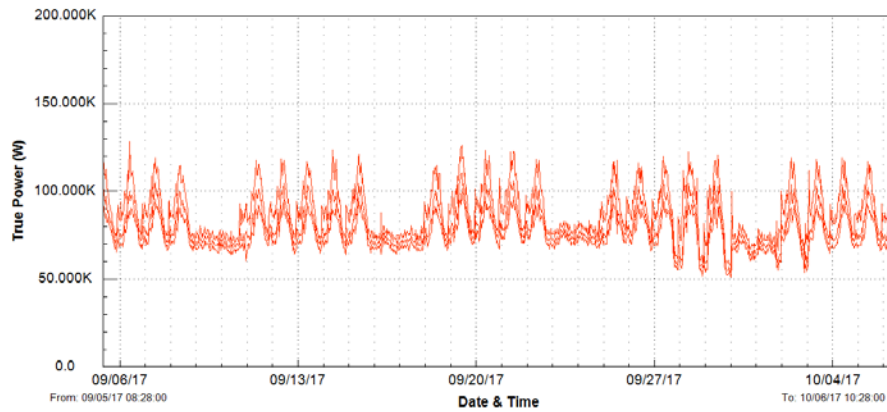
Data Log



Data Log

Data Log View of C:\Users\Sean\Desktop\VA Hospital Job 17-261\Dist Board DB1B\Dist. Board DB1B 30 Day SLO

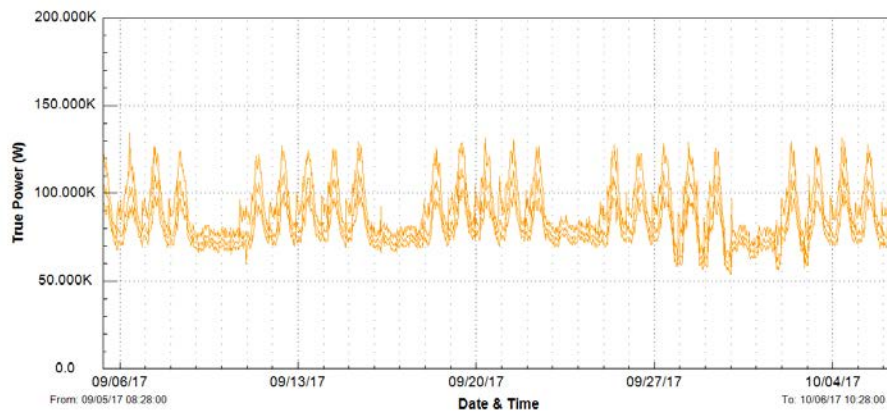
W2 Avg 79.960K
W2 Max 127.898K
W2 Min 51.002K



Data Log

Data Log View of C:\Users\Sean\Desktop\VA Hospital Job 17-261\Dist Board DB1B\Dist. Board DB1B 30 Day SLO

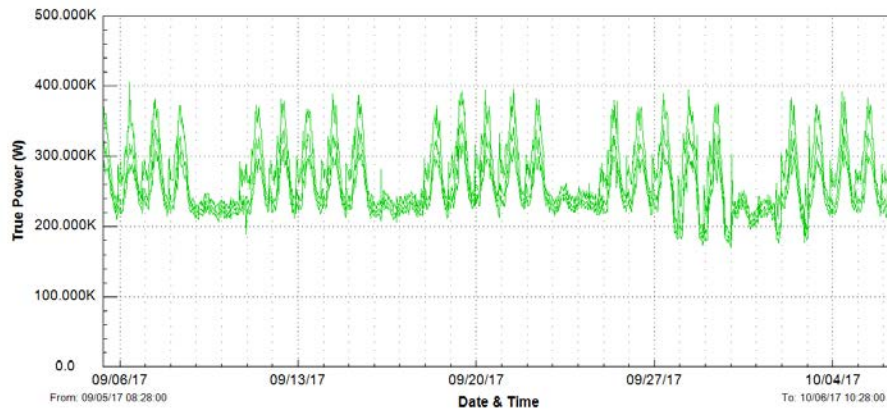
W3 Avg 83.623K
W3 Max 134.298K
W3 Min 53.606K



Data Log

Data Log View of C:\Users\Sean\Desktop\VA Hospital Job 17-261\Dist Board DB1B\Dist. Board DB1B 30 Day SLO

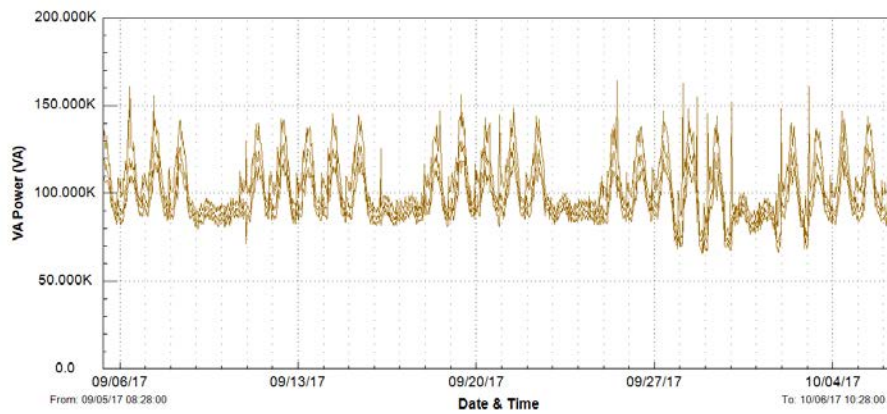
Wt Avg 255.808K
Wt Max 404.634K
Wt Min 169.779K



Data Log

Data Log View of C:\Users\Sean\Desktop\VA Hospital Job 17-261\Dist Board DB1B\Dist. Board DB1B 30 Day SLO

VA1 Avg 98.503K
VA1 Max 164.198K
VA1 Min 65.331K



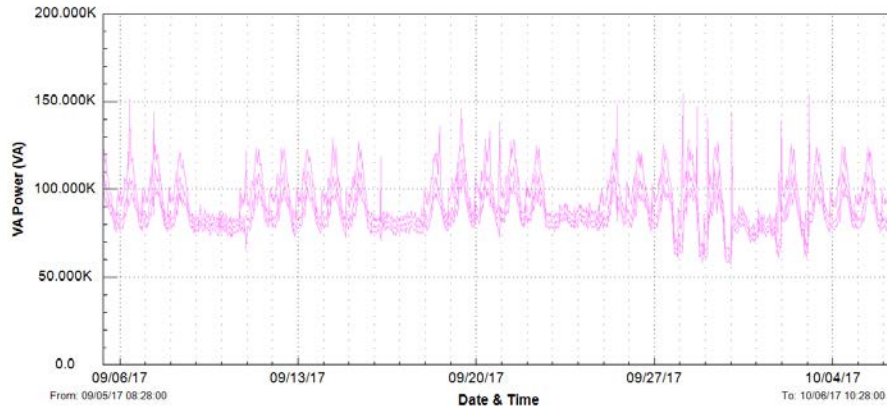
Data Log

Data Log View of C:\Users\Sean\Desktop\VA Hospital Job 17-261\Dist Board DB1B\Dist. Board DB1B 30 Day SLO

VA2 Avg
88.160K

VA2 Max
154.163K

VA2 Min
57.395K



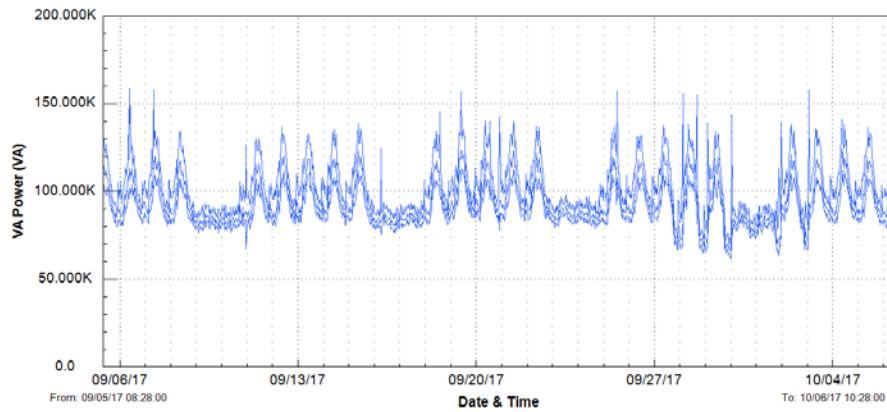
Data Log

Data Log View of C:\Users\Sean\Desktop\VA Hospital Job 17-261\Dist Board DB1B\Dist. Board DB1B 30 Day SLO

VA3 Avg
94.152K

VA3 Max
158.618K

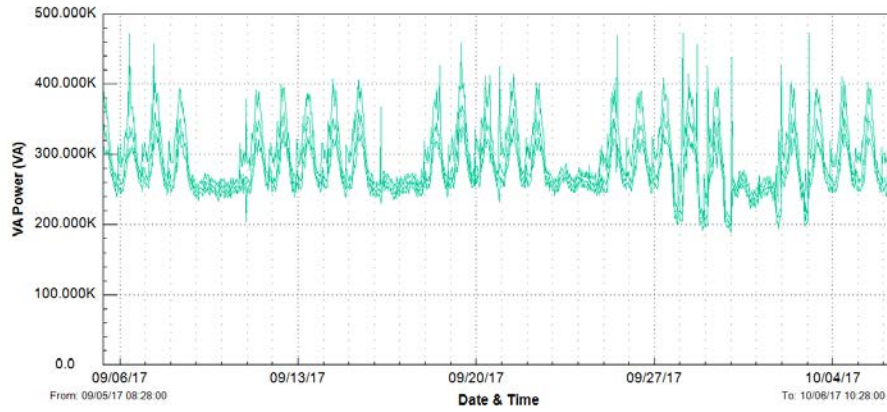
VA3 Min
61.389K



Data Log

Data Log View of C:\Users\Sean\Desktop\VA Hospital Job 17-261\Dist Board DB1B\Dist. Board DB1B 30 Day SLO

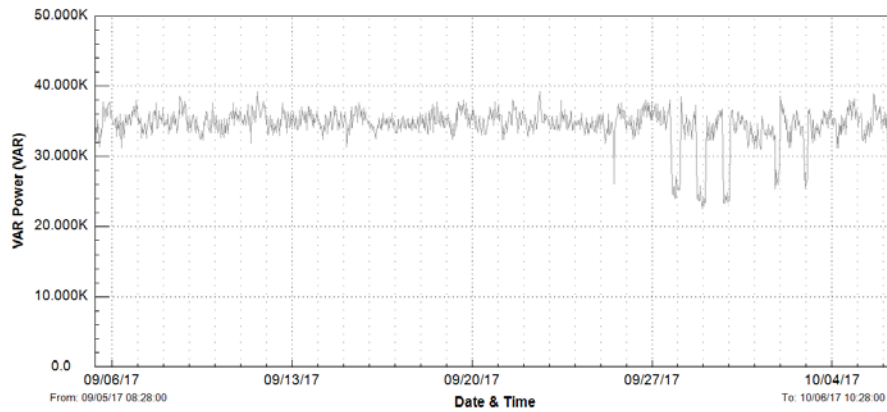
VAI Avg 280.866K
VAI Max 471.859K
VAI Min 187.802K



Data Log

Data Log View of C:\Users\Sean\Desktop\VA Hospital Job 17-261\Dist Board DB1B\Dist. Board DB1B 30 Day SLO

VAR1 Avg 34.452K



Data Log

Data Log View of C:\Users\Sean\Desktop\VA Hospital Job 17-261\Dist Board DB1B\Dist. Board DB1B 30 Day SLO

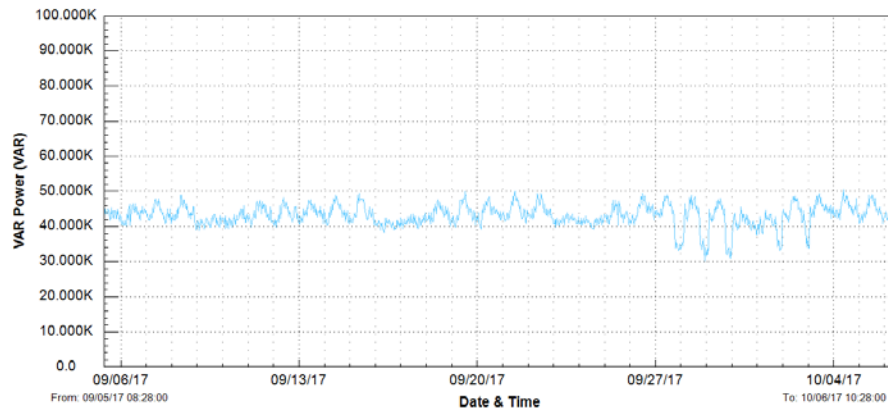
VAR2 Avg
36.922K



Data Log

Data Log View of C:\Users\Sean\Desktop\VA Hospital Job 17-261\Dist Board DB1B\Dist. Board DB1B 30 Day SLO

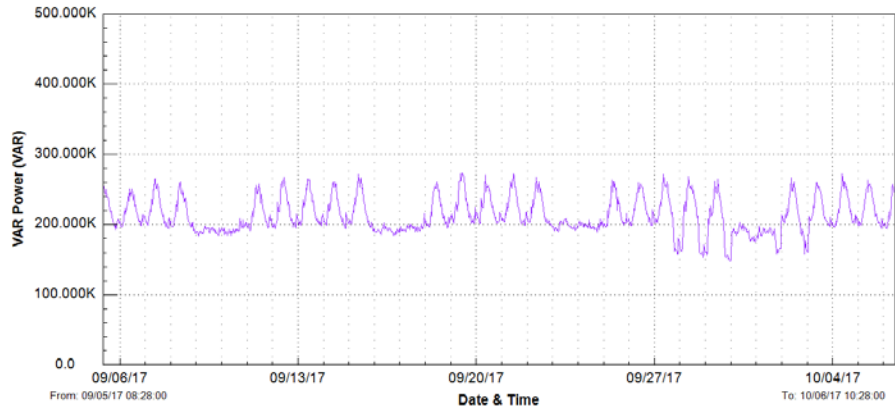
VAR3 Avg
43.113K



Data Log

Data Log View of C:\Users\Sean\Desktop\VA Hospital Job 17-261\Dist Board DB1B\Dist. Board DB1B 30 Day SLO

VARt Avg
212.227K



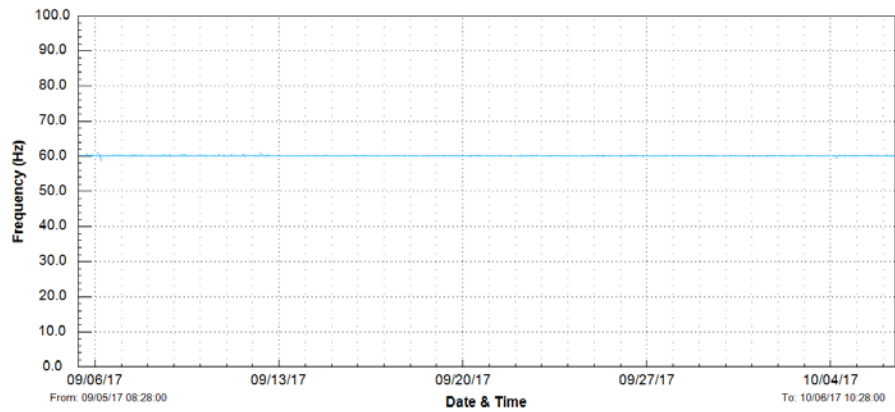
Data Log

Data Log View of C:\Users\Sean\Desktop\VA Hospital Job 17-261\Dist Board DB1B\Dist. Board DB1B 30 Day SLO

Freq Avg
60.0

Freq Max
61.0

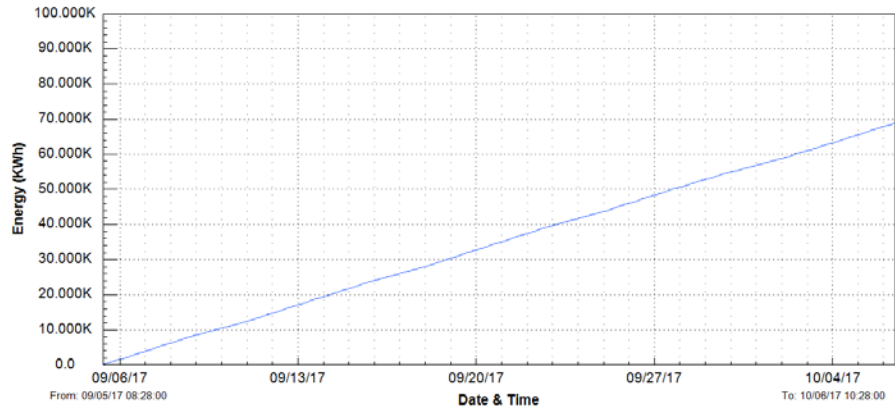
Freq Min
58.5



Data Log

Data Log View of C:\Users\Sean\Desktop\VA Hospital Job 17-261\Dist Board DB1B\Dist. Board DB1B 30 Day SLO

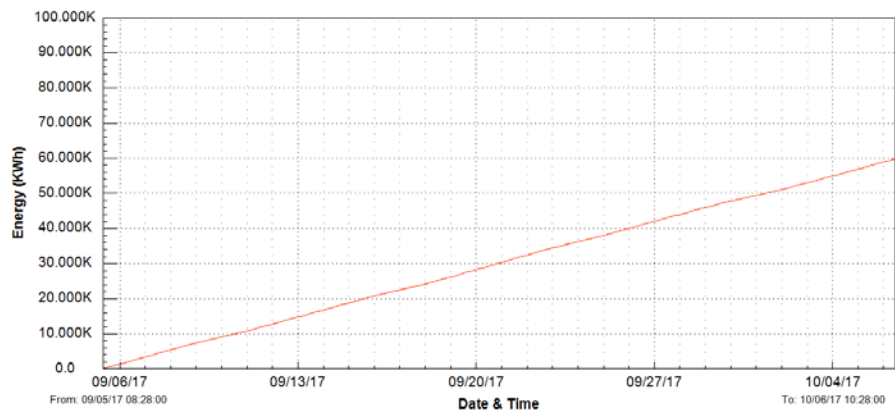
KWH1 Avg
68.756K



Data Log

Data Log View of C:\Users\Sean\Desktop\VA Hospital Job 17-261\Dist Board DB1B\Dist. Board DB1B 30 Day SLO

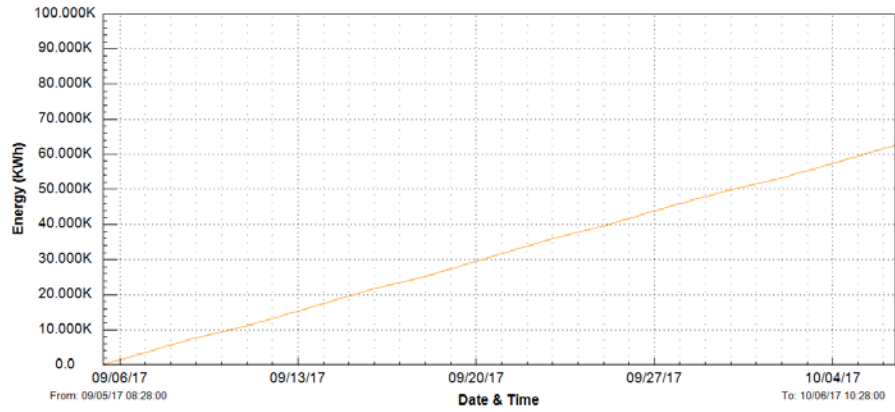
KWH2 Avg
59.647K



Data Log

Data Log View of C:\Users\Sean\Desktop\VA Hospital Job 17-261\Dist Board DB1B\Dist. Board DB1B 30 Day SLO

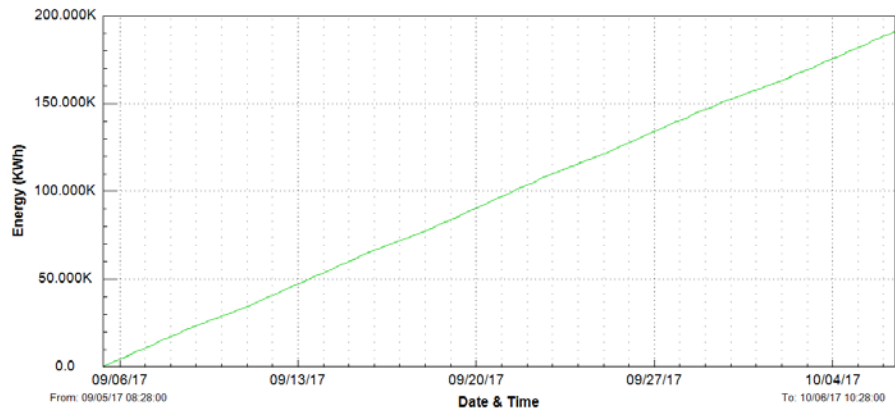
KWH3 Avg
62.378K



Data Log

Data Log View of C:\Users\Sean\Desktop\VA Hospital Job 17-261\Dist Board DB1B\Dist. Board DB1B 30 Day SLO

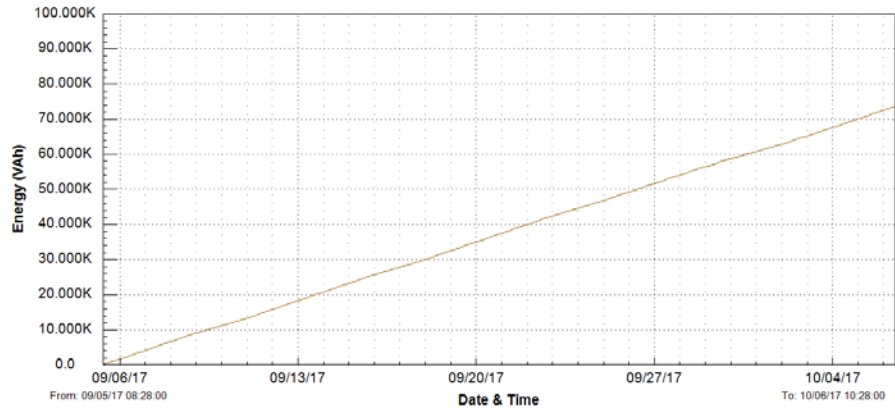
KWH1 Avg
190.820K



Data Log

Data Log View of C:\Users\Sean\Desktop\VA Hospital Job 17-261\Dist Board DB1B\Dist. Board DB1B 30 Day SLO

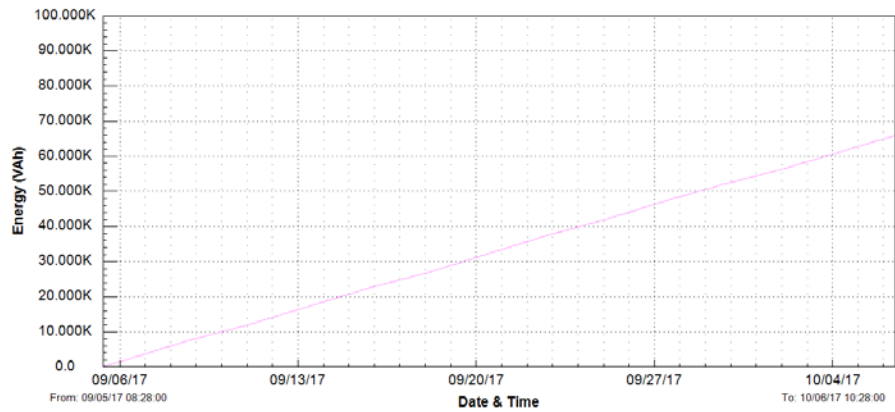
VAH1 Avg
73.479K



Data Log

Data Log View of C:\Users\Sean\Desktop\VA Hospital Job 17-261\Dist Board DB1B\Dist. Board DB1B 30 Day SLO

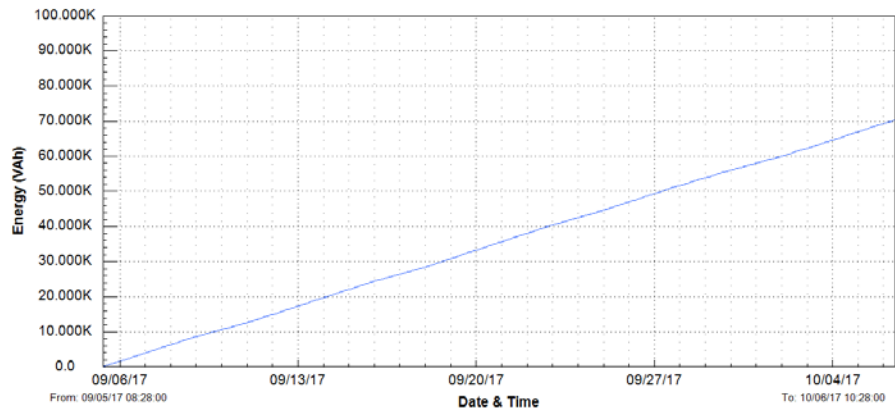
VAH2 Avg
65.764K



Data Log

Data Log View of C:\Users\Sean\Desktop\VA Hospital Job 17-261\Dist Board DB1B\Dist. Board DB1B 30 Day SLO

VAH3 Avg
70.233K



Data Log

Data Log View of C:\Users\Sean\Desktop\VA Hospital Job 17-261\Dist Board DB1B\Dist. Board DB1B 30 Day SLO

VAH11 Avg
209.514K

