

The figure shows two columns of schematic drawings of animal tracks. The left column is labeled 'D' at the bottom and contains three tracks. The first track has a single horizontal bar with a vertical tick on its right side; below it are the labels '4' and 'three quarters inch = one foot'. The second track has a horizontal bar with a vertical tick on its right side and a small black dot on the bar; below it are the labels '6" 0' and 'one inch = one foot'. The third track has a horizontal bar with a vertical tick on its right side and a small black dot on the bar; below it are the labels '6" 0' and 'one inch = one foot'. The right column is labeled 'C' at the bottom and contains three tracks. The first track has a horizontal bar with a vertical tick on its right side and a small black dot on the bar; below it are the labels '6" 0' and 'one inch = one foot'. The second track has a horizontal bar with a vertical tick on its right side and a small black dot on the bar; below it are the labels '6" 0' and 'one inch = one foot'. The third track has a horizontal bar with a vertical tick on its right side and a small black dot on the bar; below it are the labels '6" 0' and 'one inch = one foot'.

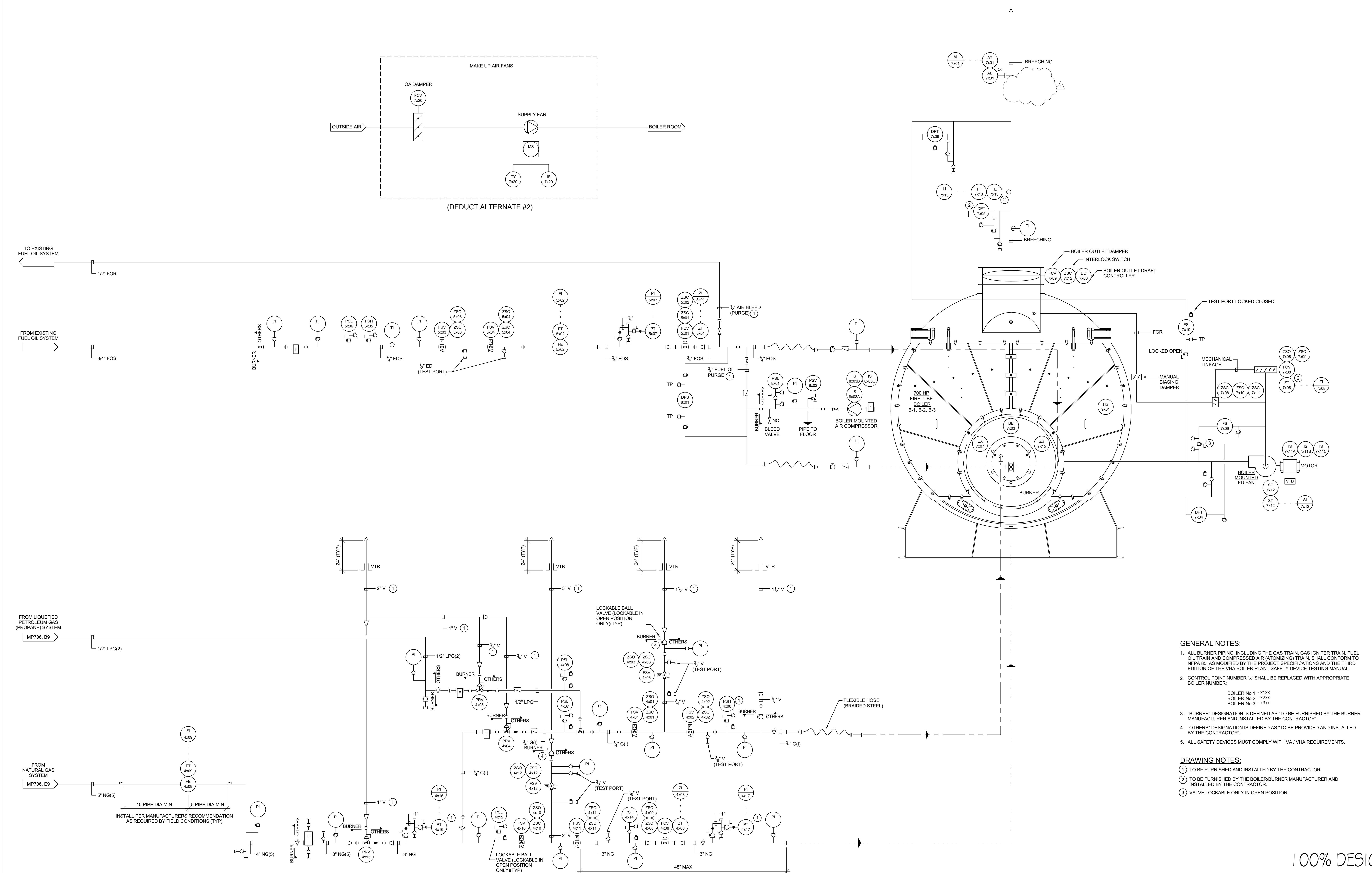
foot  $\frac{8}{8}$       three eighths inch = one foot  $\frac{0}{4}$       one half inch = one foot  $\frac{0}{2}$

VA FORM 08-6231

three inches = one foot  
one and one half inches = one foot  
one inch = one foot  
one quarter inch = one foot  
one eighth inch = one foot  
one quarter inch = one foot  
one eighth inch = one foot




BOILER - DEVICE SCHEDULE																							
VA Nomenclature	Boiler No 1 Device Label	Boiler No 2 Device Label	Boiler No 3 Device Label	Device Type	System	Function	Mounting / Location	Line Size	Range / Setpoint	Point Type	Signal	Signal To/From	Annunciation Location	Annunciation Type	Remarks		Notes						
-	BSB - 3 1 0 1	BSB - 3 2 0 1	BSB - 3 3 0 1	Shunt Switch	Boiler Feedwater	Manual Re-Set	Float Type Water Column	---	Open / Closed	DI	120 V	BMS / CCS	BMS	Status	Manufacturer Furnished / Contractor Installed								
-	BSB - 3 1 0 2	BSB - 3 2 0 2	BSB - 3 3 0 2	Shunt Switch	Boiler Feedwater	Manual Re-Set (Auxiliary)	Conductivity Probe Type Water Column	---	Open / Closed	DI	120 V	BMS / CCS	BMS	Status	Manufacturer Furnished / Contractor Installed								
-	BSC - 3 1 0 3	BSC - 3 2 0 3	BSC - 3 3 0 3	Shunt Switch	Boiler Feedwater	Safety By-Pass	Float Type Water Column	---	Open / Closed	DI	120 V	BMS / CCS	BMS	Blowdown Override	Manufacturer Furnished / Contractor Installed		Manual Reset						
-	BSC - 3 1 0 4	BSC - 3 2 0 4	BSC - 3 3 0 4	Shunt Switch	Boiler Feedwater	Safety By-Pass (Auxiliary)	Conductivity Probe Type Water Column	---	Open / Closed	DI	120 V	BMS / CCS	BMS	Blowdown Override	Manufacturer Furnished / Contractor Installed		Manual Reset						
-	DPT - 3 1 0 5	DPT - 3 2 0 5	DPT - 3 3 0 5	Pressure Transmitter	Boiler Feedwater	Level	Float Type Water Column	---	Field Set	AI	4 - 20 mA DC	CCS	CCS	Status - Drum Water Level	Manufacturer Furnished / Contractor Installed								
-	FE - 3 1 0 6	FE - 3 2 0 6	FE - 3 3 0 6	Flow Element, V-Cone	Boiler Feedwater	Flow	Supply to Boiler	2"	2,300 - 23,000 PPH	AI	4 - 20 mA DC	BMS	BMS	Status - Flow	Manufacturer Furnished / Contractor Installed		Provide w/ FT - 3 x 0 6						
-	LCV - 3 1 0 7	LCV - 3 2 0 7	LCV - 3 3 0 7	Control Valve	Boiler Feedwater	Level	Supply to Boiler	2"	0 - 23,000 PPH	AI	ZT-3407	---	---	Manufacturer Furnished / Contractor Installed									
-	LSH - 3 1 0 8	LSH - 3 2 0 8	LSH - 3 3 0 8	Level Switch	Boiler Feedwater	High Level	Conductivity Probe Type Water Column	---	Field Set	DI	120 V	BMS / CCS	BMS	High Level Bell	Manufacturer Furnished / Contractor Installed								
-	LWA - 3 1 0 9	LSL - 3 2 0 9	LSL - 3 3 0 9	Level Switch	Boiler Feedwater	Low Level	Conductivity Probe Type Water Column	---	Field Set	DI	120 V	BMS / CCS	BMS	Low Level Bell	Manufacturer Furnished / Contractor Installed								
-	LWCO - 3 1 0 3	LSL - 3 2 0 3	LSL - 3 3 0 3	Level Switch	Boiler Feedwater	Low Low Level	Float Type Water Column	---	1" Below LWA	DI	120 V	BMS / CCS	BMS	Low Low Level Cut-Off Alarm	Manufacturer Furnished / Contractor Installed								
-	ALWCO - 3 1 0 4	LSL - 3 2 0 4	LSL - 3 3 0 4	Level Switch	Boiler Feedwater	Low Low Level (Auxiliary)	Conductivity Probe Type Water Column	---	1" Below LWCO	DI	120 V	BMS / CCS	BMS	Low Low Level Cut-Off Alarm (Auxiliary)	Manufacturer Furnished / Contractor Installed								
-	ZT - 3 1 0 7	ZT - 3 2 0 7	ZT - 3 3 0 7	Position Transmitter	Boiler Feedwater	Position Feedback	LCV-3407	---	0 - 100 %	AI	4 - 20 mA DC	CCS	CCS	Position Indication %	Manufacturer Furnished / Contractor Installed		Fail Last Position						
-	CC - 3 1 0 1	CC - 3 2 0 1	CC - 3 3 0 1	Conductivity Controller	Blowdown	Conductivity	Supply from Boiler to CBHX-1	1"	Field Set	AAIO	4 - 20 mA DC	---	---	Contractor Furnished / Contractor Installed									
-	CE - 3 1 0 1	CE - 3 2 0 1	CE - 3 3 0 1	Conductivity Element	Blowdown	Conductivity	Supply from Boiler to CBHX-1	1"	Field Set	AI	4 - 20 mA DC	BBC	---	Contractor Furnished / Contractor Installed									
-	FCV - 3 1 0 1	FCV - 3 2 0 1	FCV - 3 3 0 1	Control Valve, Ball Type	Blowdown	Flow	Supply from Boiler to CBHX-1	1"	Open / Closed	DI	120 V	BBC	---	Contractor Furnished / Contractor Installed		Fail Open							
AFGSOV	FSV - 4 1 0 1	FSV - 4 2 0 1	FSV - 4 3 0 1	Safety Valve	Gas Igniter	Flow	Supply to Burner	3/4"	Open / Closed	DI	120 V	BMS	---	Manufacturer Furnished / Contractor Installed		Fail Closed							
AFGSOV	FSV - 4 1 0 2	FSV - 4 2 0 2	FSV - 4 3 0 2	Safety Valve	Gas Igniter	Flow	Supply to Burner	3/4"	Open / Closed	DI	120 V	BMS	---	Manufacturer Furnished / Contractor Installed		Fail Closed							
AFGSOV	FSV - 4 1 0 3	FSV - 4 2 0 3	FSV - 4 3 0 3	Safety Valve	Gas Igniter	Flow	Vent	---	Open / Closed	DI	120 V	BMS	---	Manufacturer Furnished / Contractor Installed		Fail Open							
-	PRV - 4 1 0 4	PRV - 4 2 0 4	PRV - 4 3 0 4	Regulating Valve	Gas Igniter	Pressure	Supply to Burner	3/4"	2 PSIG / 300 SCFH	---	---	---	---	Manufacturer Furnished / Contractor Installed		Fail Closed							
-	PRV - 4 1 0 5	PRV - 4 2 0 5	PRV - 4 3 0 5	Regulating Valve	Liquefied Petroleum Gas	Pressure	Supply to Burner	1/2"	8 PSIG / 120 SCFH	---	---	---	---	Manufacturer Furnished / Contractor Installed		Fail Closed							
PSH	PSH - 4 1 0 6	PSH - 4 2 0 6	PSH - 4 3 0 6	Pressure Switch	Gas Igniter	High Pressure	Supply to Burner	3/4"	Field Set	DI	120 V	BMS	BMS	High Pressure Alarm	Manufacturer Furnished / Contractor Installed								
LPFGPCS	PSL - 4 1 0 7	PSL - 4 2 0 7	PSL - 4 3 0 7	Pressure Switch	Gas Igniter - NG	Low Pressure	Supply to Burner	3/4"	80% of Regulated Pressure	DI	120 V	BMS	BMS	Low Pressure Alarm	Manufacturer Furnished / Contractor Installed								
LPFGPCS	PSL - 4 1 0 8	PSL - 4 2 0 8	PSL - 4 3 0 8	Pressure Switch	Gas Igniter - LPG	Low Pressure	Supply to Burner	1/2"	80% of Regulated Pressure	DI	120 V	BMS	BMS	Low Pressure Alarm	Manufacturer Furnished / Contractor Installed								
-	ZSC - 4 1 0 1	ZSC - 4 2 0 1	ZSC - 4 3 0 1	Position Switch	Gas Igniter	Position Verification	FSV-4401	---	Closed	DI	120 V	BMS	BMS	Position Verification - Fully Closed	Manufacturer Furnished / Contractor Installed								
-	ZSC - 4 1 0 2	ZSC - 4 2 0 2	ZSC - 4 3 0 2	Position Switch	Gas Igniter	Position Verification	FSV-4402	---	Closed	DI	120 V	BMS	BMS	Position Verification - Fully Closed	Manufacturer Furnished / Contractor Installed								
-	ZSC - 4 1 0 3	ZSC - 4 2 0 3	ZSC - 4 3 0 3	Position Switch	Gas Igniter	Position Verification	FSV-4403	---	Closed	DI	120 V	BMS	BMS	Position Verification - Fully Closed	Manufacturer Furnished / Contractor Installed								
-	ZSC - 4 1 0 4	ZSC - 4 2 0 4	ZSC - 4 3 0 4	Position Switch	Gas Igniter	Position Verification	FSV-4401	---	Open	DI	120 V	BMS	BMS	Position Verification - Fully Open	Manufacturer Furnished / Contractor Installed								
-	ZSC - 4 1 0 5	ZSC - 4 2 0 5	ZSC - 4 3 0 5	Position Switch	Gas Igniter	Position Verification	FSV-4402	---	Open	DI	120 V	BMS	BMS	Position Verification - Fully Open	Manufacturer Furnished / Contractor Installed								
-	ZSC - 4 1 0 6	ZSC - 4 2 0 6	ZSC - 4 3 0 6	Position Switch	Gas Igniter	Position Verification	FSV-4403	---	Open	DI	120 V	BMS	BMS	Position Verification - Fully Open	Manufacturer Furnished / Contractor Installed								
-	FCV - 4 1 0 8	FCV - 4 2 0 8	FCV - 4 3 0 8	Control Valve	Natural Gas	Flow	Supply to Burner	3"	0 - 25,000 SCFH	---	ZT-4408	---	---	Manufacturer Furnished / Contractor Installed		Fail Closed							
-	FE - 4 1 0 9	FE - 4 2 0 9	FE - 4 3 0 9	Flow Element, Thermal Mass	Natural Gas	Flow, Totalizing	Supply to Burner	4"	2,500 - 25,000 SCFH	AI	4 - 20 mA DC	CCS	CCS	Status - Flow	Contractor Furnished / Contractor Installed		Provide w/ FT - 4 x 0 9						
AFGSOV	FSV - 4 1 1 0	FSV - 4 2 1 0	FSV - 4 3 1 0	Safety Valve	Natural Gas	Flow	Supply to Burner	3"	Open / Closed	DI	120 V	BMS	---	Manufacturer Furnished / Contractor Installed		Fail Closed							
AFGSOV	FSV - 4 1 1 1	FSV - 4 2 1 1	FSV - 4 3 1 1	Safety Valve	Natural Gas	Flow	Supply to Burner	3"	Open / Closed	DI	120 V	BMS	---	Manufacturer Furnished / Contractor Installed		Fail Closed							
AFGSOV	FSV - 4 1 1 2	FSV - 4 2 1 2	FSV - 4 3 1 2	Safety Valve	Natural Gas	Flow	Vent	---	Open / Closed	DI	120 V	BMS	---	Manufacturer Furnished / Contractor Installed		Fail Open							
-	PRV - 4 1 1 3	PRV - 4 2 1 3	PRV - 4 3 1 3	Regulating Valve	Natural Gas	Pressure	Supply to Burner	3"	5 PSIG / 25,000 SCFH	---	---	---	---	Manufacturer Furnished / Contractor Installed		Fail Open							
IFOPCS	PSH - 4 1 1 4	PSH - 4 2 1 4	PSH - 4 3 1 4	Pressure Switch	Natural Gas	High Pressure	Supply to Burner	3"	4 PSIG	DI	120 V	BMS	BMS	High Pressure Alarm	Manufacturer Furnished / Contractor Installed		Setpoint No Higher Than 120% of Regulated Pressure						
IFOPCS	PSL - 4 1 1 5	PSL - 4 2 1 5	PSL - 4 3 1 5	Pressure Switch	Natural Gas	Low Pressure	Supply to Burner	3"	4 PSIG	DI	120 V	BMS	BMS	Low Pressure Alarm	Manufacturer Furnished / Contractor Installed		Setpoint No Higher Than 80% of Regulated Pressure						
-	PT - 4 1 1 6	PT - 4 2 1 6	PT - 4 3 1 6	Pressure Transmitter	Natural Gas	Pressure	Supply to Burner	3"	0 - 25 PSIG	AI	4 - 20 mA DC	PMCP	BAS	Status - Pressure	Contractor Furnished / Contractor Installed								
-	PT - 4 1 1 7	PT - 4 2 1 7	PT - 4 3 1 7	Pressure Transmitter	Natural Gas	Pressure	Supply to Burner	3"	0 - 25 PSIG	AI	4 - 20 mA DC	PMCP	BAS	Status - Pressure	Contractor Furnished / Contractor Installed								
LFPS	ZSC - 4 1 0 8	ZSC - 4 2 0 8	ZSC - 4 3 0 8	Position Switch	Natural Gas	Position Verification	FCV-4408	---	Closed	DI	120 V	BMS	BMS	Position Verification - Fully Closed	Manufacturer Furnished / Contractor Installed								
LFPS	ZSC - 4 1 0 9	ZSC - 4 2 0 9	ZSC - 4 3 0 9	Position Switch	Natural Gas	Position Verification	FCV-4408	---	Closed	DI	120 V	BMS	BMS	Position Verification - Fully Closed	Manufacturer Furnished / Contractor Installed								
POC-AFGSOV	ZSC - 4 1 1 0	ZSC - 4 2 1 0	ZSC - 4 3 1 0	Position Switch	Natural Gas	Position Verification	FSV-4410	---	Closed	DI	120 V	BMS	BMS	Position Verification - Fully Closed	Manufacturer Furnished / Contractor Installed		Wired in Series with ZSC-4x11						
POC-AFGSOV	ZSC - 4 1 1 1	ZSC - 4 2 1 1	ZSC - 4 3 1 1	Position Switch	Natural Gas	Position Verification	FSV-4411	---	Closed	DI	120 V	BMS	BMS	Position Verification - Fully Closed	Manufacturer Furnished / Contractor Installed		Wired in Series with ZSC-4x10						
-	ZSC - 4 1 1 2	ZSC - 4 2 1 2	ZSC - 4 3 1 2	Position Switch	Natural Gas	Position Verification	FSV-4412	---	Closed	DI	120 V	BMS	BMS	Position Verification - Fully Closed	Manufacturer Furnished / Contractor Installed								
-	ZSC - 4 1 1 3	ZSC - 4 2 1 3	ZSC - 4 3 1 3	Position Switch	Natural Gas	Position Verification	FSV-4413	---	Open	DI	120 V	BMS	BMS	Position Verification - Fully Open	Manufacturer Furnished / Contractor Installed								
-	ZSC - 4 1 1 4	ZSC - 4 2 1 4	ZSC - 4 3 1 4	Position Switch	Natural Gas	Position Verification	FSV-4414	---	Open	DI	120 V	BMS	BMS	Position Verification - Fully Open	Manufacturer Furnished / Contractor Installed								
-	ZSC - 4 1 1 5	ZSC - 4 2 1 5	ZSC - 4 3 1 5	Position Switch	Natural Gas	Position Verification	FSV-4415	---	Open	DI	120 V	BMS	BMS	Position Verification - Fully Open	Manufacturer Furnished / Contractor Installed								
-	ZSC - 4 1 1 6	ZSC - 4 2 1 6	ZSC - 4 3 1 6	Position Switch	Natural Gas	Position Verification	FSV-4416	---	Open	DI	120 V	BMS	BMS	Position Verification - Fully Open	Manufacturer Furnished / Contractor Installed								
-	ZT - 4 1 0 8	ZT - 4 2 0 8	ZT - 4 3 0 8	Position Transmitter	Natural Gas	Position Feedback	FCV-4408	---	0 - 100 %	AI	4 - 20 mA DC	CCS	CCS	Position Indication %	Manufacturer Furnished / Contractor Installed								
-	FCV - 5 1 0 1	FCV - 5 2 0 1	FCV - 5 3 0 1	Control Valve	Fuel Oil	Flow	Supply to Burner	3/4"	0 - 180 GPH	---	ZT-5401	---	---	Manufacturer Furnished / Contractor Installed		Fail Closed							
-	FE - 5 1 0 2	FE - 5 2 0 2	FE - 5 3 0 2	Flow Element, Positive Displacement	Fuel Oil	Flow, Totalizing	Supply to Burner	3/4"	18 - 180 GPH	AI	4 - 20 mA DC	CCS	CCS	Status - Flow	Manufacturer Furnished / Contractor Installed		Provide w/ FT - 5 x 0 2						
AFOSOV	FSV - 5 1 0 3	FSV - 5 2 0 3	FSV - 5 3 0 3	Safety Valve	Fuel Oil	Flow	Supply to Burner	3/4"	Open / Closed	DI	120 V	BMS	---	Manufacturer Furnished / Contractor Installed		Fail Closed							
AFOSOV	FSV - 5 1 0 4	FSV - 5 2 0 4	FSV - 5 3 0 4	Safety Valve	Fuel Oil	Flow	Supply to Burner	3/4"	Open / Closed	DI	120 V	BMS	---	Manufacturer Furnished / Contractor Installed		Fail Closed							
IFOPCS	PSH - 5 1 0 5	PSH - 5 2 0 5	PSH - 5 3 0 5	Pressure Switch	Fuel Oil	High Pressure	Supply to Burner	3/4"	110% of Regulated Pressure	DI	120 V	BMS	BMS	High Pressure Alarm	Manufacturer Furnished / Contractor Installed								
IFOPCS	PSL - 5 1 0 6	PSL - 5 2 0 6	PSL - 5 3 0 6	Pressure Switch	Fuel Oil	Low Pressure	Supply to Burner	3/4"	90% of Regulated Pressure	DI	120 V	BMS	BMS	Low Pressure Alarm	Manufacturer Furnished / Contractor Installed								
-	PT - 5 1 0 7	PT - 5 2 0 7	PT - 5 3 0 7	Pressure Transmitter	Fuel Oil	Pressure	Supply to Burner	3/4"	0 - 250 PSIG	AI	4 - 20 mA DC	PMCP	BAS	Status - Pressure	Manufacturer Furnished / Contractor Installed								
ZSC	ZSC - 5 1 0 1	ZSC - 5 2 0 1	ZSC - 5 3 0 1	Position Switch	Fuel Oil	Position Verification	FCV-5401	---	Closed	DI	120 V	BMS	BMS	Position Verification - Fully Closed	Manufacturer Furnished / Contractor Installed								
ZSC	ZSC - 5 1 0 2	ZSC - 5 2 0 2	ZSC - 5 3 0 2	Position Switch	Fuel Oil	Position Verification	FCV-5401	---	Closed	DI	120 V	BMS	BMS	Position Verification - Fully Closed	Manufacturer Furnished / Contractor Installed								
POC-AFGSOV	ZSC - 5 1 0 3	ZSC - 5 2 0 3	ZSC - 5 3 0 3	Position Switch	Fuel Oil	Position Verification	FSV-5403	---	Closed	DI	120 V	BMS	BMS	Position Verification - Fully Closed	Manufacturer Furnished / Contractor Installed								
POC-AFGSOV	ZSC - 5 1 0 4	ZSC - 5 2 0 4	ZSC - 5 3 0 4	Position Switch	Fuel Oil	Position Verification	FSV-5404	---	Closed	DI	120 V	BMS	BMS	Position Verification - Fully Closed	Manufacturer Furnished / Contractor Installed								
-	ZSC - 5 1 0 5	ZSC - 5 2 0 5	ZSC - 5 3 0 5	Position Switch	Fuel Oil	Position Verification	FSV-5405	---	Open	DI	120 V	BMS	BMS	Position Verification - Fully Open	Manufacturer Furnished / Contractor Installed								
-	ZSC - 5 1 0 6	ZSC - 5 2 0 6	ZSC - 5 3 0 6	Position Switch	Fuel Oil	Position Verification	FSV-5406	---	Open	DI	120 V	BMS	BMS	Position Verification - Fully Open	Manufacturer Furnished / Contractor Installed								
-	ZT - 5 1 0 1	ZT - 5 2 0 1	ZT - 5 3 0 1	Position Transmitter	Fuel Oil	Position Feedback	FCV-5401	---	0 - 100 %	AI	4 - 20 mA DC	CCS	CCS	Position Indication %	Manufacturer Furnished / Contractor Installed								
-	FE - 6 1 0 1	FE - 6 2 0 1	FE - 6 3 0 1	Flow Element, V-Cone	Steam	Flow	Supply from Boiler	6"	2,100 - 21,000 PPH	AI	4 - 20 mA DC	CCS	CCS	Status - Flow	Manufacturer Furnished / Contractor Installed		Provide w/ FT - 6 x 0 1						
RESPLS	PSH - 6 1 0 2	PSH - 6 2 0 2	PSH - 6 3 0 2	Pressure Switch	Steam	High High Pressure	Boiler	---	120 PSIG	DI	120 V	BMS / CCS	BMS	High High Pressure Cut-Off	Manufacturer Furnished / Contractor Installed		Automatic Reset						
NEBSPS	PSH - 6 1 0 3	PSH - 6 2 0 3	PSH - 6 3 0 3	Pressure Switch	Boiler	High High Pressure (Auxiliary)	Boiler	---	120 PSIG	DI	120 V	BMS	BMS	High High Pressure Cut-Off (Auxiliary)	Manufacturer Furnished / Contractor Installed		Manual Reset						
SVB1	PSV - 6 1 0 4	PSV - 6 2 0 4	PSV - 6 3 0 4	Safety Valve	Boiler	Pressure	---	---	135 PSIG	---	---	---	---	Manufacturer Furnished / Contractor Installed									
SVB2	PSV - 6 1 0 5	PSV - 6 2 0 5	PSV - 6 3 0 5	Safety Valve	Boiler	Pressure	---																

three inches = one foot  
one and one half inches = one foot  
one inch = one foot  
three quarters inch = one foot  
one half inch = one foot  
three eighths inch = one foot  
one eighth inch = one foot  
one quarter inch = one foot  
one eighth inch = one foot



- GENERAL NOTES:**
1. ALL BURNER PIPING, INCLUDING THE GAS TRAIN, GAS IGNITER TRAIN, FUEL OIL TRAIN AND COMPRESSED AIR (ATOMIZING) TRAIN, SHALL CONFORM TO NFPA 85, AS MODIFIED BY THE PROJECT SPECIFICATIONS AND THE THIRD EDITION OF THE VHA BOILER PLANT SAFETY DEVICE TESTING MANUAL.
  2. CONTROL POINT NUMBER "X" SHALL BE REPLACED WITH APPROPRIATE BOILER NUMBER.  
BOILER No 1 - x1xx  
BOILER No 2 - x2xx  
BOILER No 3 - x3xx
  3. "BURNER" DESIGNATION IS DEFINED AS "TO BE FURNISHED BY THE BURNER MANUFACTURER AND INSTALLED BY THE CONTRACTOR".
  4. "OTHERS" DESIGNATION IS DEFINED AS "TO BE PROVIDED AND INSTALLED BY THE CONTRACTOR".
  5. ALL SAFETY DEVICES MUST COMPLY WITH VA / VHA REQUIREMENTS.
- DRAWING NOTES:**
- ① TO BE FURNISHED AND INSTALLED BY THE CONTRACTOR.
  - ② TO BE FURNISHED BY THE BOILER/BURNER MANUFACTURER AND INSTALLED BY THE CONTRACTOR.
  - ③ VALVE LOCKABLE ONLY IN OPEN POSITION.

100% DESIGN  
APPROVED FOR CONSTRUCTION

		<b>CONSULTANTS:</b>		<b>ENGINEER-OF-RECORD</b> JACK S. NEALE		<b>FL P.E. NO.</b> 42678		<b>ARCHITECT/ENGINEERS:</b>		<b>Drawing Title</b>		<b>Project Title</b>		<b>Project Number</b>		<div>Office of Construction and Facilities Management</div> <div> <b>Department of Veterans Affairs</b></div>			
		<div><b>Affiliated Engineers</b> Affiliated Engineers SE, Inc. Tioga Town Center 12921 SW 1st Road Ste 205 Gainesville, Florida 32609 Tel 352.376.5500 Fax 352.375.3479 CA-5140</div>						<div><b>Design, Inc.</b> 3603 NW 98th Street, Suite B Gainesville, FL 32606 Phone: (352) 474-6124 Fax: (352) 533-4437 COA: FL #29578 AKEA Project No. 128-16</div>		<b>TYPICAL 700HP FIRE TUBE BOILER FUEL TRAIN SCHEMATIC</b>		<b>DESIGN TO REPLACE BOILERS, BLDG 100 ENERGY CENTER</b>		<b>516-15-107</b>					
<b>1 - Addendum 1</b>		05/24/18								<b>Approved: Project Director</b>		<b>Location</b> BAY PINES, FLORIDA		<b>Building Number</b> 100					
												<b>Date</b> MAY 15, 2017		<b>Checked</b> JSN		<b>Drawn</b> RWD		<b>Drawing Number</b> MP709	



three inches = one foot  
one and one half inches = one foot  
one inch = one foot  
three quarters inch = one foot  
one half inch = one foot  
three eighths inch = one foot  
one quarter inch = one foot  
one eighth inch = one foot

A

B

C

D

E

F

A

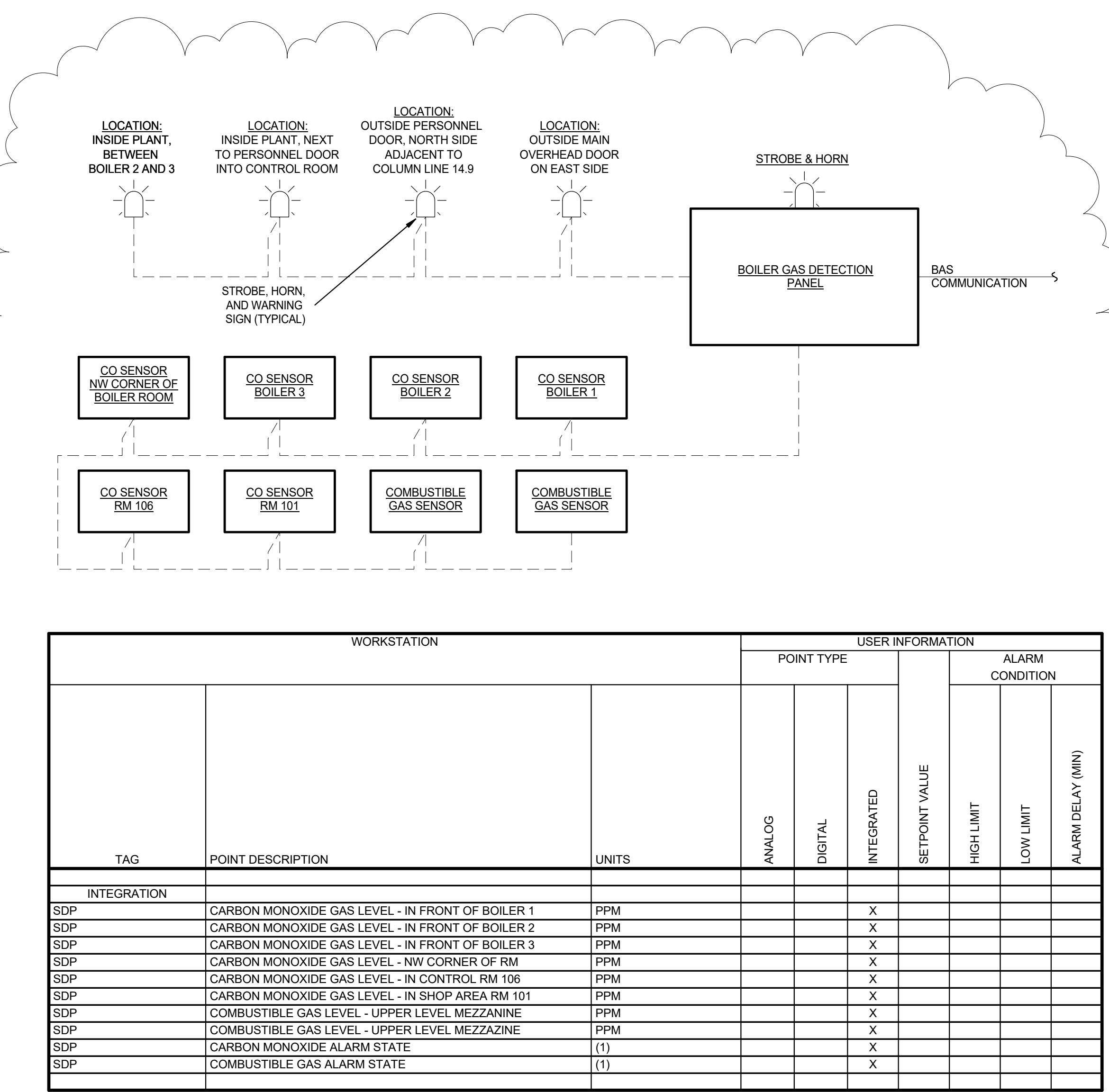
B

C

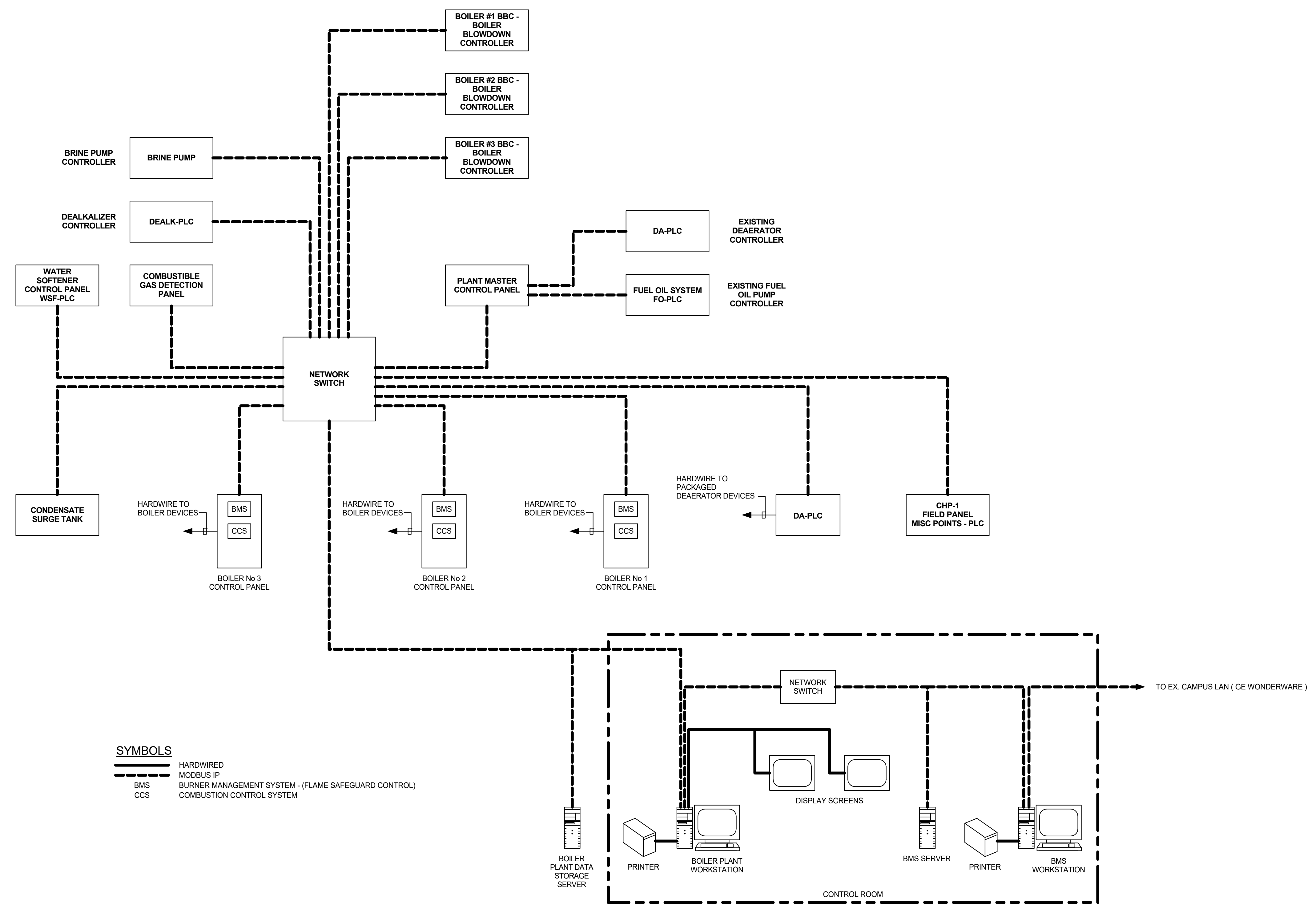
D

E

F



2 BOILER GAS DETECTION SYSTEM CONTROL DIAGRAM  
SCALE: NONE



SYMBOLS  
BMS  
CCS  
HARDWIRED  
MODBUS P  
BURNER MANAGEMENT SYSTEM - (FLAME SAFEGUARD CONTROL)  
COMBUSTION CONTROL SYSTEM

1 CONTROL SYSTEM ARCHITECTURE  
SCALE: NONE

CONSULTANTS: <b>AEI</b> Affiliated Engineers Affiliated Engineers SE, Inc. Trioga Town Center 12921 SW 1st Road Ste 205 Gainesville, Florida 32669 Tel 352.376.5500 Fax 352.375.3479 CA-5140		ENGINEER-OF-RECORD JACK S. NEALE FL P.E. NO. 42678	ARCHITECT/ENGINEERS: <b>AKEA</b> Design, Inc. 3603 NW 98th Street, Suite B Gainesville, FL 32606 Phone: (352) 474-6124 Fax: (352) 533-4437 COA: FL #29578 AKEA Project No. 128-16	Drawing Title <b>CONTROL SYSTEM ARCHITECTURE</b>	Project Title <b>DESIGN TO REPLACE BOILERS, BLDG 100 ENERGY CENTER</b>	Project Number <b>516-15-107</b> Building Number <b>100</b>	Office of Construction and Facilities Management	
1 - Addendum 1 05/24/18				Approved: Project Director	Location <b>BAY PINES, FLORIDA</b>	Date MAY 15, 2017 Checked JSN Drawn RWD	Drawing Number <b>MP710</b>	Department of Veterans Affairs

100% DESIGN  
APPROVED FOR CONSTRUCTION