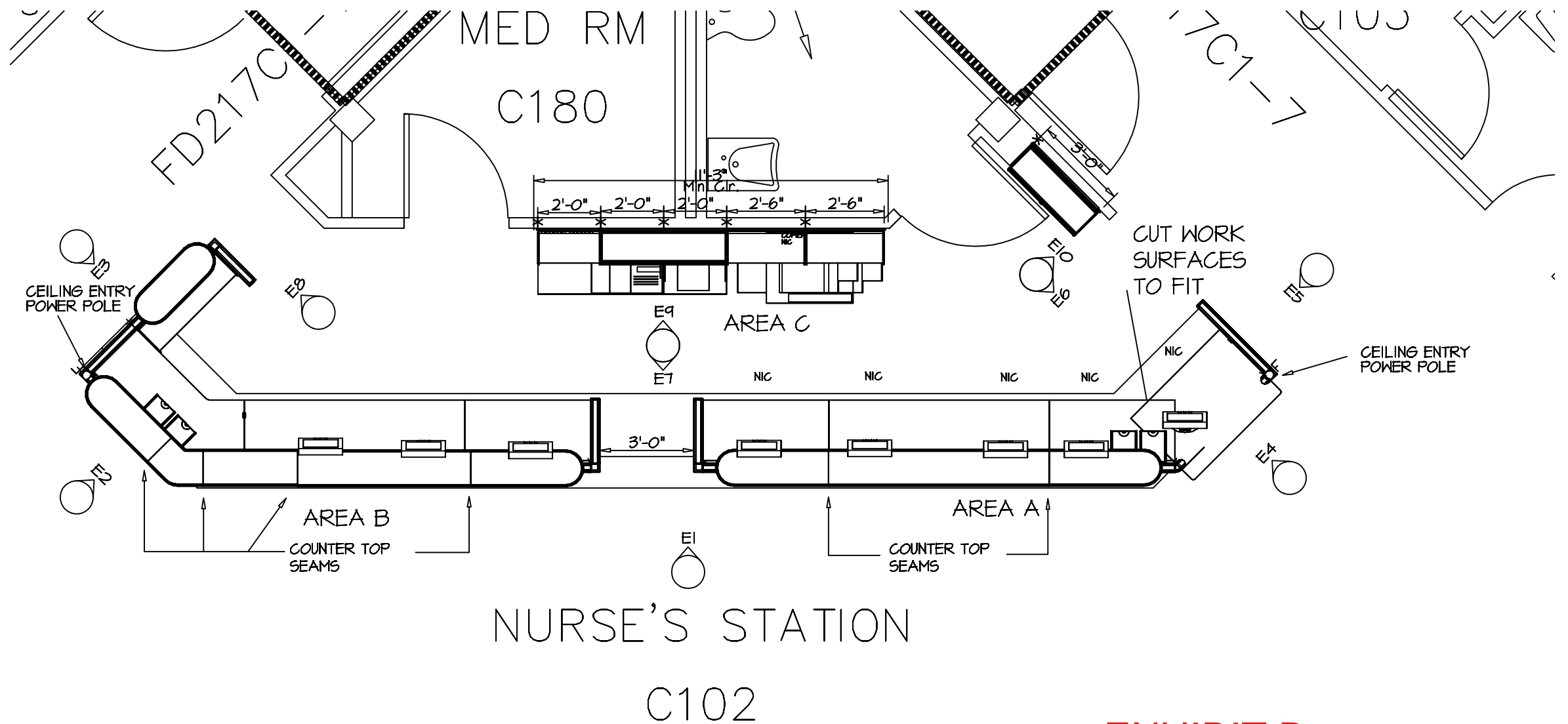


GENERAL NOTES

1. LAYOUT SUBJECT TO VERIFICATION OF FIELD DIMENSIONS AND CONDITIONS.
2. ALL WALLS THAT ARE TO RECEIVE WALL HANGER STRIPS MUST HAVE MINIMUM 20' GA. METAL STUDS AT 16" O.C. WITH EITHER 5/8" GYPSUM WALL BOARD OR TWO 1/2" LAYERS OF GYPSUM WALL BOARD 4' CAN WITHSTAND 250 LB. PER LINEAR FOOT STATIC LOAD.
3. WALL HANGER STRIPS TO BE HUNG WITH CENTER LINE NO CLOSER THAN 1-1/2" TO INSIDE CORNERS OF WALLS, EXCEPT WHERE NOTED. SEE TYPICAL INTERFACE DRAWING AND/OR ELEVATIONS.
4. ALL ETHO WALL STRIPS TO BE MOUNTED AT 6" AFF EXCEPT WHERE NOTED. SEE ELEVATIONS.
5. STANDARD RAIL OR WALL STRIPS SHOULD NOT BE INSTALLED ON WALLS OR PARTITIONS THAT ARE NOT ANCHORED TO THE BUILDING STRUCTURE, AT THE FLOOR AND ABOVE THE CEILING.
6. ALL WORKSURFACES SHALL BE MOUNTED AT 24" AFF FOR SIT DOWN HEIGHT OR 36" AFF FOR STAND UP HEIGHT, UNLESS INDICATED OTHERWISE. SEE ELEVATIONS.
7. THE CLEARANCE BETWEEN SUPPORT ARMS ON A WORK SURFACE IS EQUAL TO THE WIDTH OF THE WORKSURFACE, LESS 2-1/2".
8. CLEAR DIMENSION BETWEEN ALL WORK SURFACE TOPS/SINKS AND THE UNDER SIDE OF OVERHEAD STORAGE TO BE 1'-6" CLEAR, UNLESS INDICATED OTHERWISE.
9. ALL RECEPTACLES AND PHONE/DATA JACKS LOCATED WITHIN ARCHITECTURAL WALLS, SHALL BE PLACED NO HIGHER THAN 22" AFF, AND IN BETWEEN THE WALL HANGER STRIPS. REFERENCE THE TYPICAL UTILITY INTERFACE ELEVATION.



NURSE'S STATION
C102

EXHIBIT B
PROJECT # 578-16-045
1ST FLOOR

FINAL

PROJECT VA HINES
BLDG 217 NS - FIRST FLOOR

PLAN_I

DRAWN BY CHECKED BY SCALE 1/4" = 1'-0" PROJECT NUMBER GVI3KJK020

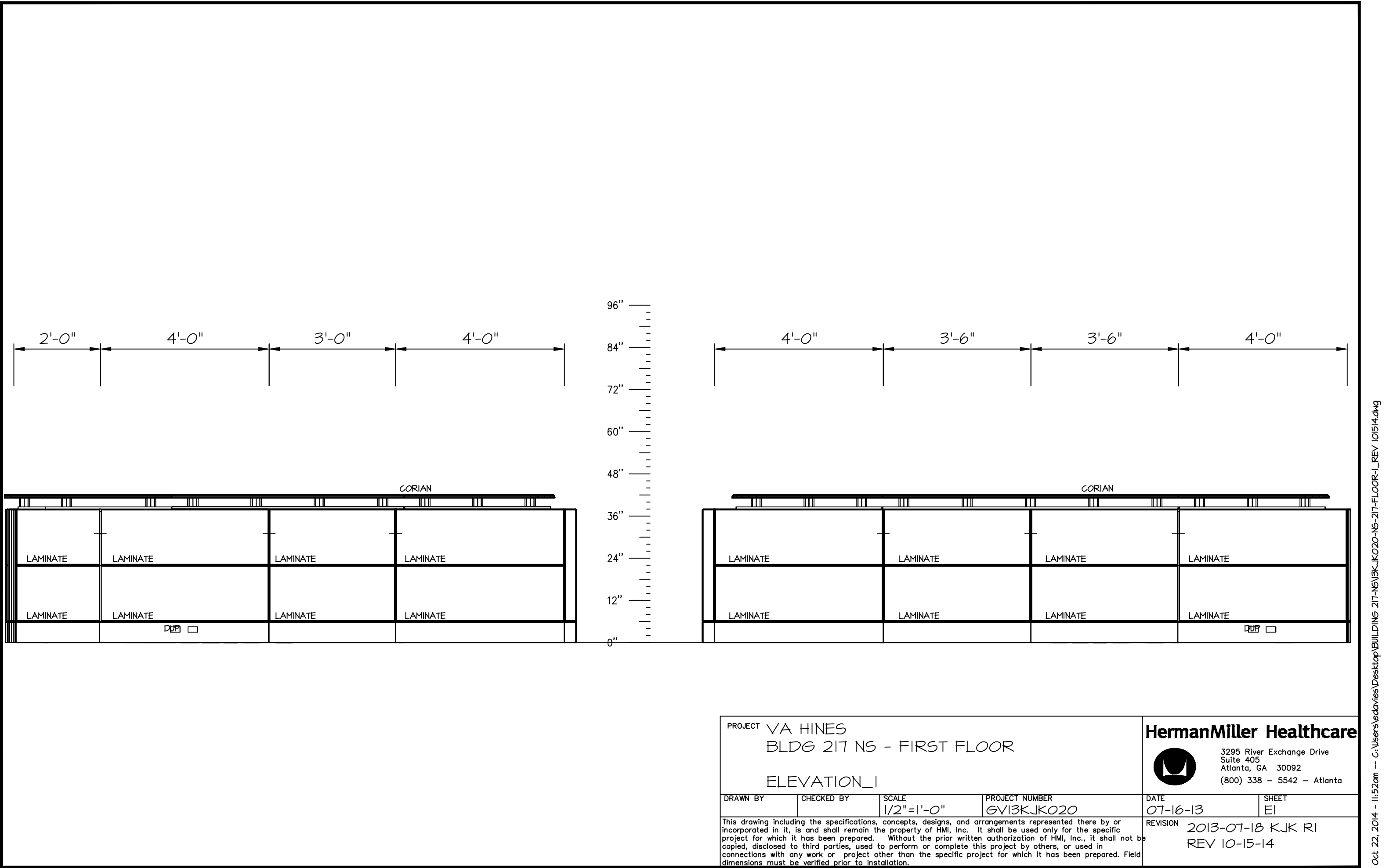
This drawing including the specifications, concepts, designs, and arrangements represented there by or incorporated in it, is and shall remain the property of HMI, Inc. It shall be used only for the specific project for which it has been prepared. Without the prior written authorization of HMI, Inc., it shall not be copied, disclosed to third parties, used to perform or complete this project by others, or used in connections with any work or project other than the specific project for which it has been prepared. Field dimensions must be verified prior to installation.

HermanMiller Healthcare



3295 River Exchange Drive
Suite 405
Atlanta, GA 30092
(800) 338 - 5542 - Atlanta

DATE 07-16-13 SHEET PLI
REVISION 2013-07-18 KJK RI
REV 10-15-14



96"
84"
72"
60"
48"
36"
24"
12"
0"

4'-0"

CEILING ENTRY
POWER POLE

LAMINATE

LAMINATE

PROJECT VA HINES
BLDG 217 NS - FIRST FLOOR

ELEVATION_2

HermanMiller Healthcare



3295 River Exchange Drive
Suite 405
Atlanta, GA 30092
(800) 338 - 5542 - Atlanta

DRAWN BY

CHECKED BY

SCALE
1/2"=1'-0"

PROJECT NUMBER

GV13KJK020

DATE

07-16-13

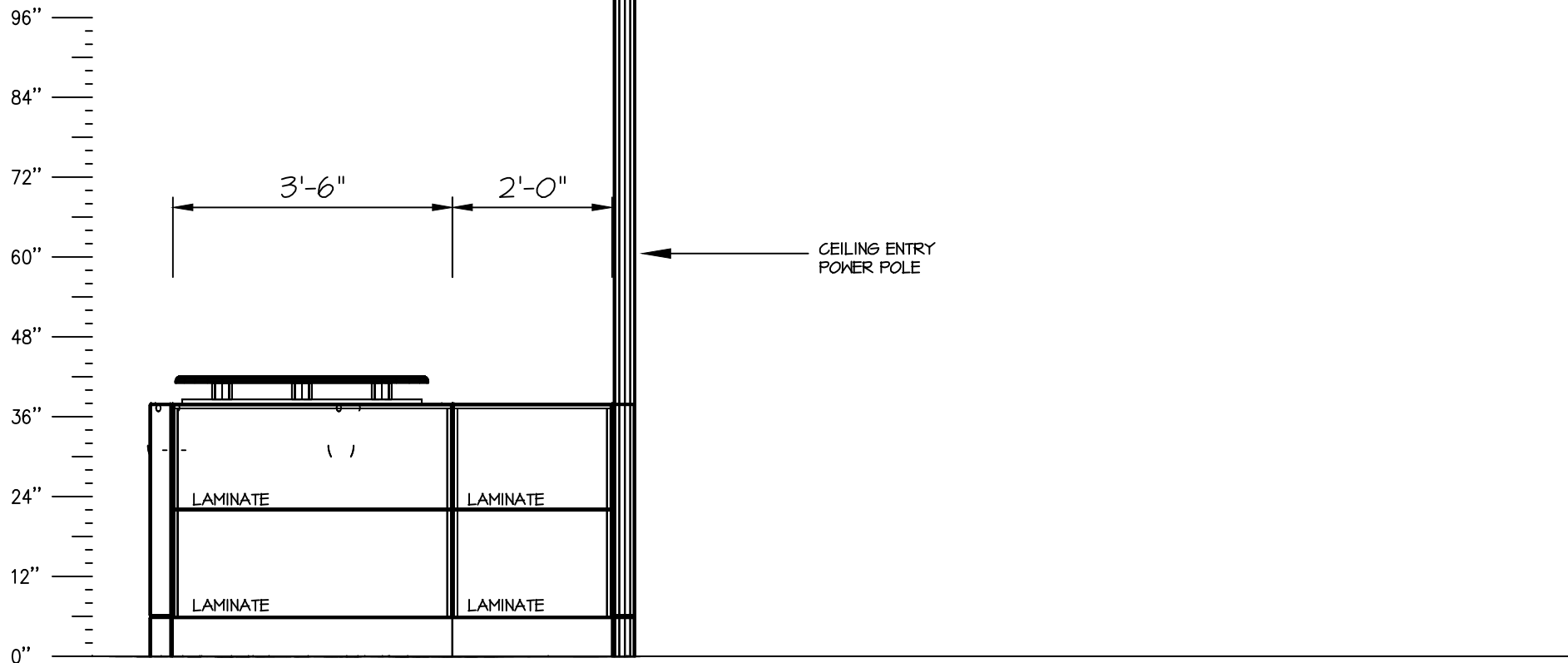
SHEET

E2

This drawing including the specifications, concepts, designs, and arrangements represented there by or incorporated in it, is and shall remain the property of HMI, Inc. It shall be used only for the specific project for which it has been prepared. Without the prior written authorization of HMI, Inc., it shall not be copied, disclosed to third parties, used to perform or complete this project by others, or used in connections with any work or project other than the specific project for which it has been prepared. Field dimensions must be verified prior to installation.

REVISION

2013-07-18 KJK RI
REV 10-15-14



PROJECT VA HINES
BLDG 217 NS - FIRST FLOOR
ELEVATION_3

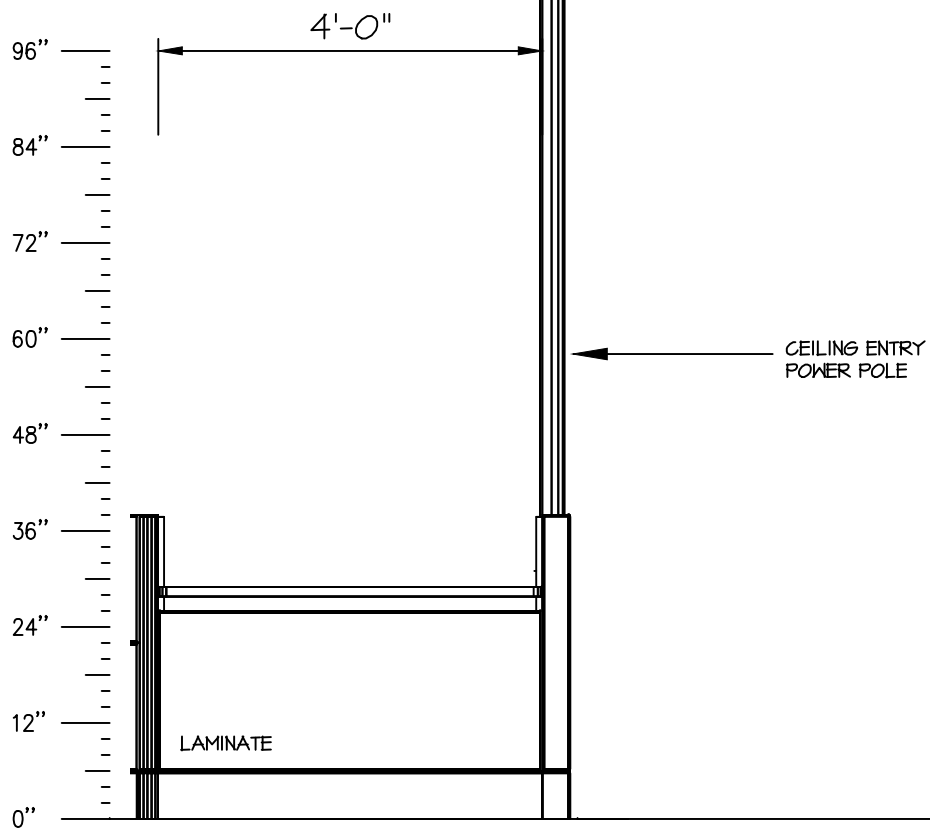
HermanMiller Healthcare




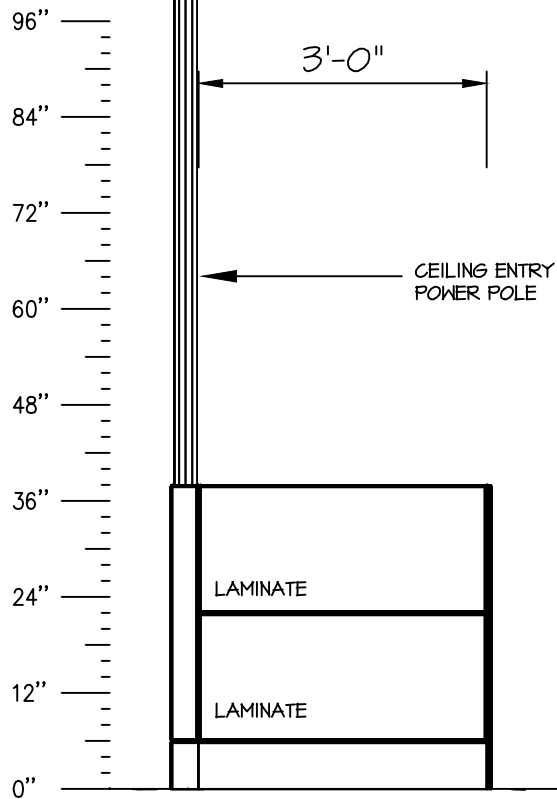
3295 River Exchange Drive
Suite 405
Atlanta, GA 30092
(800) 338 - 5542 - Atlanta

DRAWN BY	CHECKED BY	SCALE 1/2"=1'-0"	PROJECT NUMBER GV13KJK020
This drawing including the specifications, concepts, designs, and arrangements represented there by or incorporated in it, is and shall remain the property of HMI, Inc. It shall be used only for the specific project for which it has been prepared. Without the prior written authorization of HMI, Inc., it shall not be copied, disclosed to third parties, used to perform or complete this project by others, or used in connections with any work or project other than the specific project for which it has been prepared. Field dimensions must be verified prior to installation.			

DATE 07-16-13	SHEET E3
REVISION 2013-07-18 KJK RI REV 10-15-14	



PROJECT VA HINES BLDG 217 NS - FIRST FLOOR ELEVATION_4				HermanMiller Healthcare  3295 River Exchange Drive Suite 405 Atlanta, GA 30092 (800) 338 - 5542 - Atlanta	
DRAWN BY	CHECKED BY	SCALE 1/2"=1'-0"	PROJECT NUMBER GVI3KJKO20	DATE 07-16-13	SHEET E4
This drawing including the specifications, concepts, designs, and arrangements represented there by or incorporated in it, is and shall remain the property of HMI, Inc. It shall be used only for the specific project for which it has been prepared. Without the prior written authorization of HMI, Inc., it shall not be copied, disclosed to third parties, used to perform or complete this project by others, or used in connections with any work or project other than the specific project for which it has been prepared. Field dimensions must be verified prior to installation.				REVISION 2013-07-18 KJK RI REV 10-15-14	



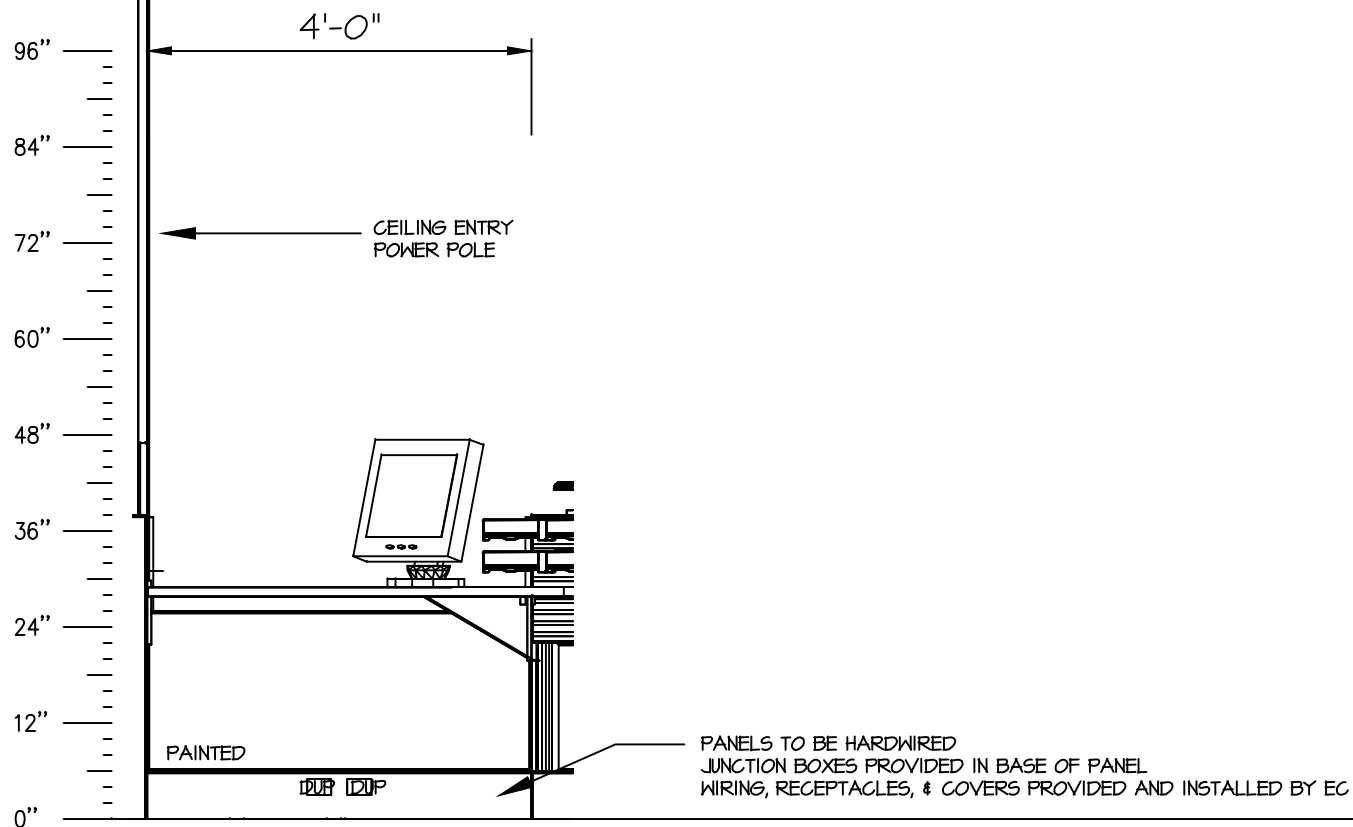
PROJECT VA HINES
BLDG 217 NS - FIRST FLOOR
ELEVATION_5


HermanMiller Healthcare

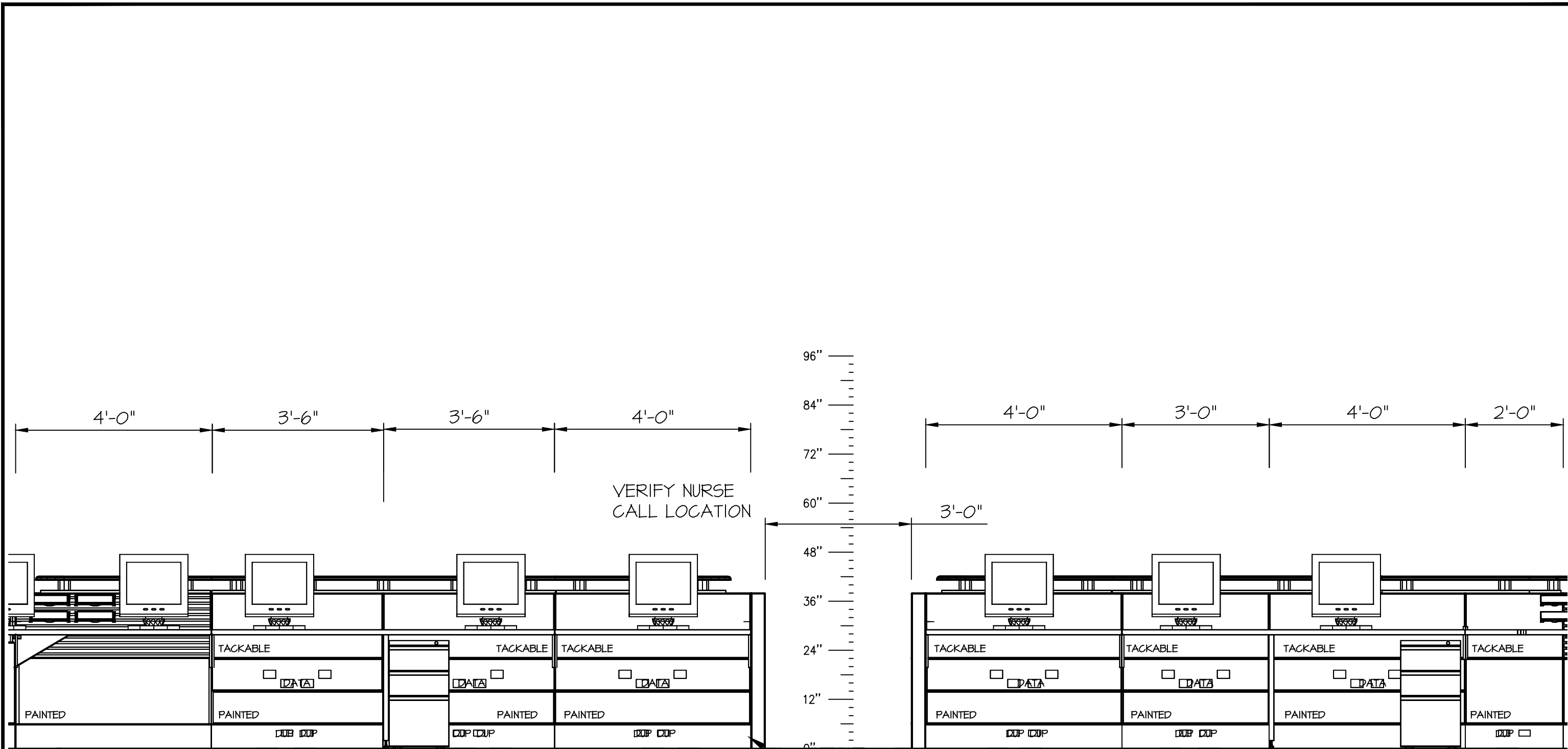



3295 River Exchange Drive
Suite 405
Atlanta, GA 30092
(800) 338 - 5542 - Atlanta

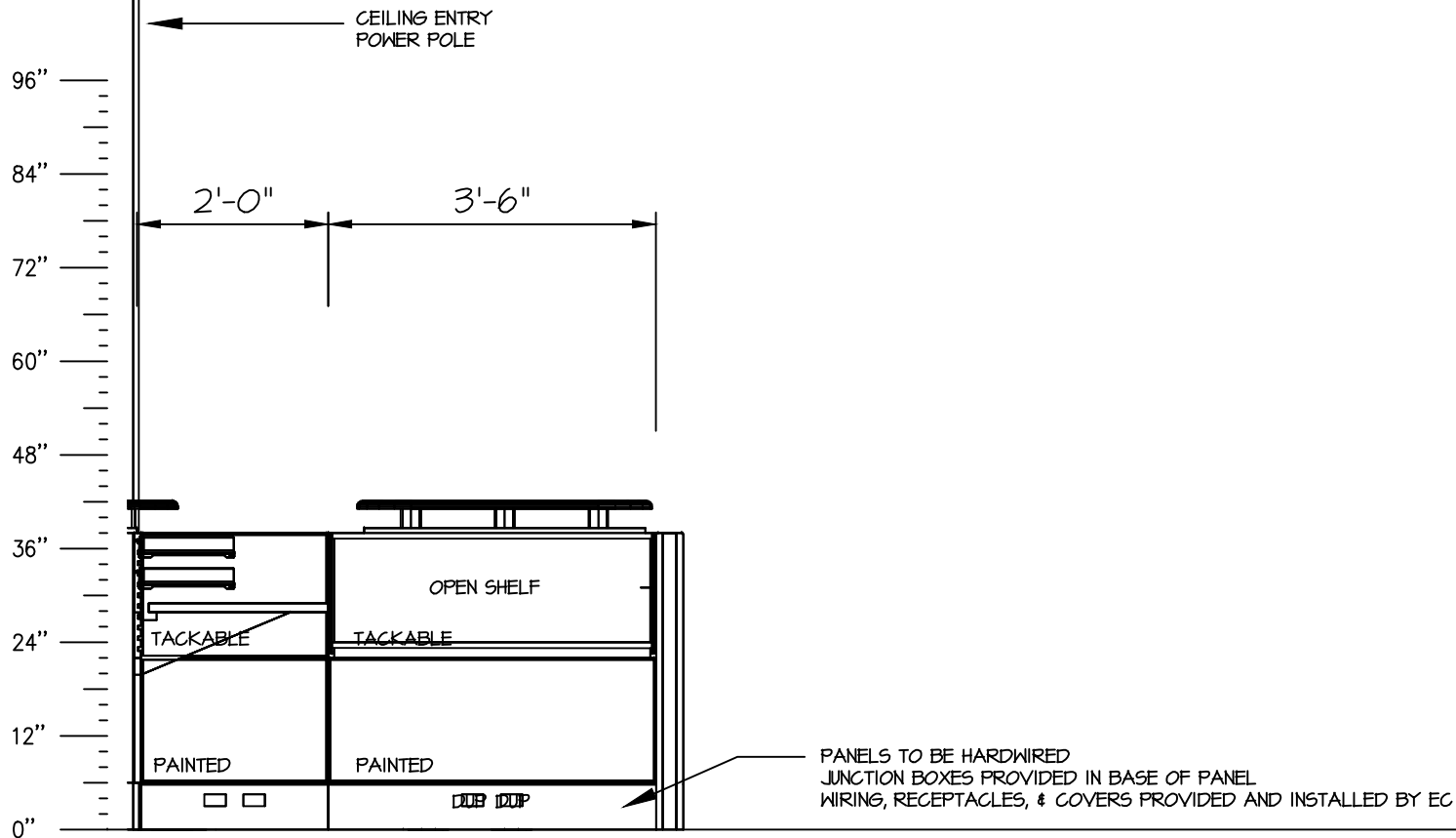
DRAWN BY	CHECKED BY	SCALE 1/2"=1'-0"	PROJECT NUMBER GV13KJK020	DATE 07-16-13	SHEET E5
This drawing including the specifications, concepts, designs, and arrangements represented there by or incorporated in it, is and shall remain the property of HMI, Inc. It shall be used only for the specific project for which it has been prepared. Without the prior written authorization of HMI, Inc., it shall not be copied, disclosed to third parties, used to perform or complete this project by others, or used in connections with any work or project other than the specific project for which it has been prepared. Field dimensions must be verified prior to installation.				REVISION 2013-07-18 KJK RI REV 10-15-14	




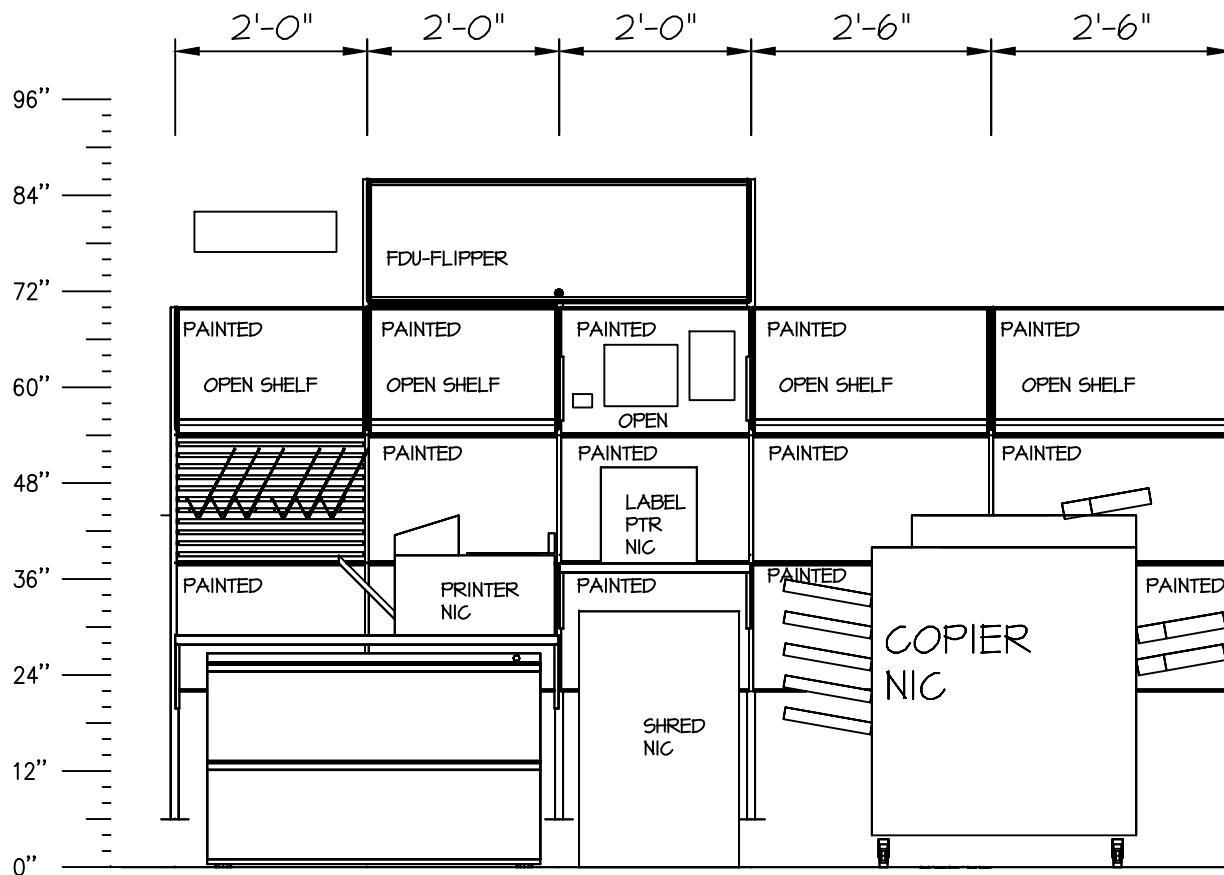
PROJECT VA HINES BLDG 217 NS - FIRST FLOOR ELEVATION_6				HermanMiller Healthcare  3295 River Exchange Drive Suite 405 Atlanta, GA 30092 (800) 338 - 5542 - Atlanta	
DRAWN BY	CHECKED BY	SCALE 1/2"=1'-0"	PROJECT NUMBER GV13KJK020	DATE 07-16-13	SHEET E6
This drawing including the specifications, concepts, designs, and arrangements represented there by or incorporated in it, is and shall remain the property of HMI, Inc. It shall be used only for the specific project for which it has been prepared. Without the prior written authorization of HMI, Inc., it shall not be copied, disclosed to third parties, used to perform or complete this project by others, or used in connections with any work or project other than the specific project for which it has been prepared. Field dimensions must be verified prior to installation.				REVISION 2013-07-18 KJK RI REV 10-14-15	




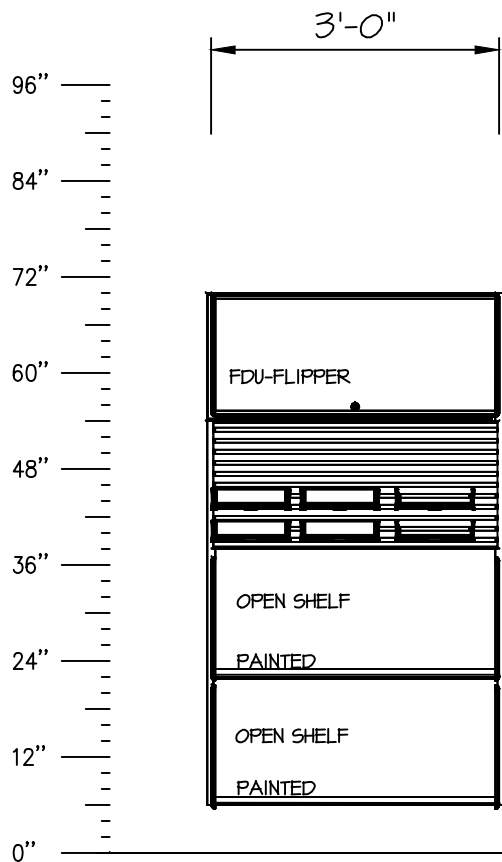
PROJECT VA HINES BLDG 217 NS - FIRST FLOOR ELEVATION_7				HermanMiller Healthcare  3295 River Exchange Drive Suite 405 Atlanta, GA 30092 (800) 338 - 5542 - Atlanta	
DRAWN BY	CHECKED BY	SCALE 1/2"=1'-0"	PROJECT NUMBER GV13KJK020	DATE 07-16-13	SHEET E7
This drawing including the specifications, concepts, designs, and arrangements represented there by or incorporated in it, is and shall remain the property of HMI, Inc. It shall be used only for the specific project for which it has been prepared. Without the prior written authorization of HMI, Inc., it shall not be copied, disclosed to third parties, used to perform or complete this project by others, or used in connections with any work or project other than the specific project for which it has been prepared. Field dimensions must be verified prior to installation.				REVISION 2013-07-18 KJK RI REV 10-15-14	




PROJECT VA HINES BLDG 217 NS - FIRST FLOOR ELEVATION_8				HermanMiller Healthcare  3295 River Exchange Drive Suite 405 Atlanta, GA 30092 (800) 338 - 5542 - Atlanta	
DRAWN BY	CHECKED BY	SCALE 1/2"=1'-0"	PROJECT NUMBER GV13KJK020	DATE 07-16-13	SHEET E8
This drawing including the specifications, concepts, designs, and arrangements represented there by or incorporated in it, is and shall remain the property of HMI, Inc. It shall be used only for the specific project for which it has been prepared. Without the prior written authorization of HMI, Inc., it shall not be copied, disclosed to third parties, used to perform or complete this project by others, or used in connections with any work or project other than the specific project for which it has been prepared. Field dimensions must be verified prior to installation.				REVISION 2013-07-18 KJK RI REV 10-15-14	

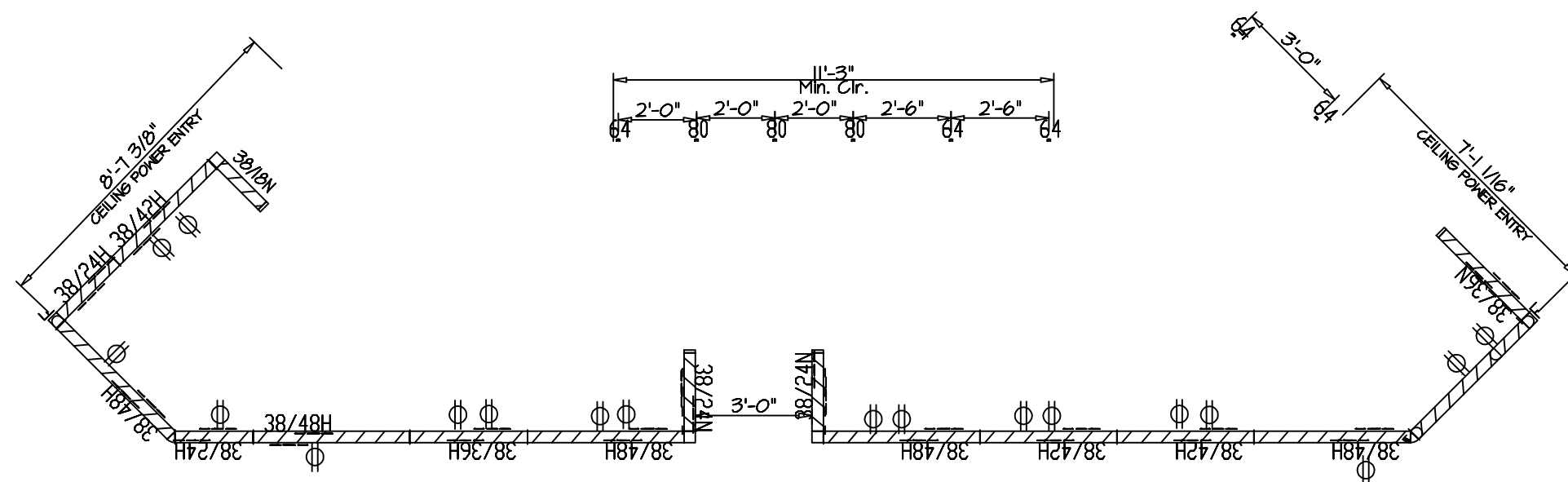



PROJECT VA HINES BLDG 217 NS - FIRST FLOOR ELEVATION_9				HermanMiller Healthcare  3295 River Exchange Drive Suite 405 Atlanta, GA 30092 (800) 338 - 5542 - Atlanta	
DRAWN BY	CHECKED BY	SCALE 1/2"=1'-0"	PROJECT NUMBER GV13KJK020	DATE 07-16-13	SHEET E9
This drawing including the specifications, concepts, designs, and arrangements represented there by or incorporated in it, is and shall remain the property of HMI, Inc. It shall be used only for the specific project for which it has been prepared. Without the prior written authorization of HMI, Inc., it shall not be copied, disclosed to third parties, used to perform or complete this project by others, or used in connections with any work or project other than the specific project for which it has been prepared. Field dimensions must be verified prior to installation.				REVISION 2013-07-18 KJK RI REV 10-15-14	



PROJECT VA HINES BLDG 217 NS - FIRST FLOOR ELEVATION_10				HermanMiller Healthcare  3295 River Exchange Drive Suite 405 Atlanta, GA 30092 (800) 338 - 5542 - Atlanta	
DRAWN BY	CHECKED BY	SCALE 1/2"=1'-0"	PROJECT NUMBER GVI3KJKO20	DATE 07-16-13	SHEET E10
This drawing including the specifications, concepts, designs, and arrangements represented there by or incorporated in it, is and shall remain the property of HMI, Inc. It shall be used only for the specific project for which it has been prepared. Without the prior written authorization of HMI, Inc., it shall not be copied, disclosed to third parties, used to perform or complete this project by others, or used in connections with any work or project other than the specific project for which it has been prepared. Field dimensions must be verified prior to installation.				REVISION 2013-07-18 KJK RI REV 10-15-14	

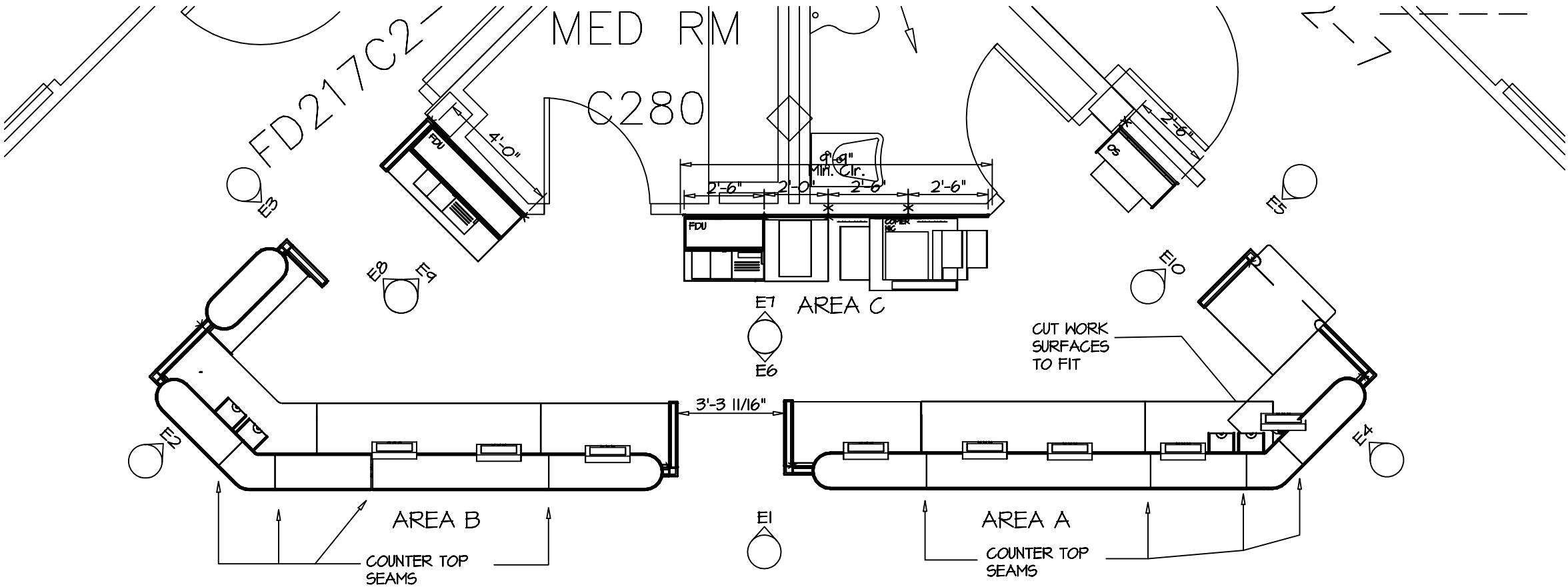
1. JUNCTION BOXES ARE SUPPLIED BY HERMAN MILLER. RECEPTACLES AND WIRING PROVIDED AND INSTALLED BY ELECTRICAL CONTRACTOR.
2. POWER ENTRY TO BUILDING POWER SOURCE BY ELECTRICAL CONTRACTOR.
3. ALL 1/2" ALUMINUM MC CABLING SUPPLIED AND INSTALLED BY ELECTRICAL CONTRACTOR.
4. COMMUNICATIONS ENTRY, CABLING AND BOXES BY OTHERS.



PROJECT VA HINES BLDG 217 NS - FIRST FLOOR SUGG'D UTILITY LOCATION PLAN PLAN_2				HermanMiller Healthcare  3295 River Exchange Drive Suite 405 Atlanta, GA 30092 (800) 338 - 5542 - Atlanta	
DRAWN BY	CHECKED BY	SCALE 1/4"= 1'-0"	PROJECT NUMBER GV13KJK020	DATE 07-16-13	SHEET PL2
This drawing including the specifications, concepts, designs, and arrangements represented there by or incorporated in it, is and shall remain the property of HMI, Inc. It shall be used only for the specific project for which it has been prepared. Without the prior written authorization of HMI, Inc., it shall not be copied, disclosed to third parties, used to perform or complete this project by others, or used in connections with any work or project other than the specific project for which it has been prepared. Field dimensions must be verified prior to installation.				REVISION 2013-07-18 KJK RI REV 10-15-14	

GENERAL NOTES

1. LAYOUT SUBJECT TO VERIFICATION OF FIELD DIMENSIONS AND CONDITIONS.
2. ALL WALLS THAT ARE TO RECEIVE WALL HANGER STRIPS MUST HAVE MINIMUM 20" GA. METAL STUDS AT 16" O.C. WITH EITHER 5/8" GYPSUM WALL BOARD OR TWO 1/2" LAYERS OF GYPSUM WALL BOARD & CAN WITHSTAND 250 LB. PER LINEAR FOOT STATIC LOAD.
3. WALL HANGER STRIPS TO BE HUNG WITH CENTER LINE NO CLOSER THAN 1-1/2" TO INSIDE CORNERS OF WALLS, EXCEPT WHERE NOTED. SEE TYPICAL INTERFACE DRAWING AND/OR ELEVATIONS.
4. ALL ETHO WALL STRIPS TO BE MOUNTED AT 6" AFF EXCEPT WHERE NOTED. SEE ELEVATIONS.
5. STANDARD RAIL OR WALL STRIPS SHOULD NOT BE INSTALLED ON WALLS OR PARTITIONS THAT ARE NOT ANCHORED TO THE BUILDING STRUCTURE, AT THE FLOOR AND ABOVE THE CEILING.
6. ALL WORKSURFACES SHALL BE MOUNTED AT 24" AFF FOR SIT DOWN HEIGHT OR 36" AFF FOR STAND UP HEIGHT, UNLESS INDICATED OTHERWISE. SEE ELEVATIONS.
7. THE CLEARANCE BETWEEN SUPPORT ARMS ON A WORK SURFACE IS EQUAL TO THE WIDTH OF THE WORKSURFACE, LESS 2-1/2".
8. CLEAR DIMENSION BETWEEN ALL WORK SURFACE TOPS/SINKS AND THE UNDER SIDE OF OVERHEAD STORAGE TO BE 1'-6" CLEAR, UNLESS INDICATED OTHERWISE.
9. ALL RECEPTACLES AND PHONE/DATA JACKS LOCATED WITHIN ARCHITECTURAL WALLS, SHALL BE PLACED NO HIGHER THAN 22" AFF, AND IN BETWEEN THE WALL HANGER STRIPS. REFERENCE THE TYPICAL UTILITY INTERFACE ELEVATION.



NOTE: POWER SOURCE TO
COME FROM FLOOR

EXHIBIT B
PROJECT # 578-16-045
2nd Floor

FINAL

PROJECT VA HINES
BLDG 217 NS - SECOND FLOOR

PLAN_I

DRAWN BY CHECKED BY SCALE 1/4" = 1'-0" PROJECT NUMBER GV13KJK020

This drawing including the specifications, concepts, designs, and arrangements represented there by or incorporated in it, is and shall remain the property of HMI, Inc. It shall be used only for the specific project for which it has been prepared. Without the prior written authorization of HMI, Inc., it shall not be copied, disclosed to third parties, used to perform or complete this project by others, or used in connections with any work or project other than the specific project for which it has been prepared. Field dimensions must be verified prior to installation.

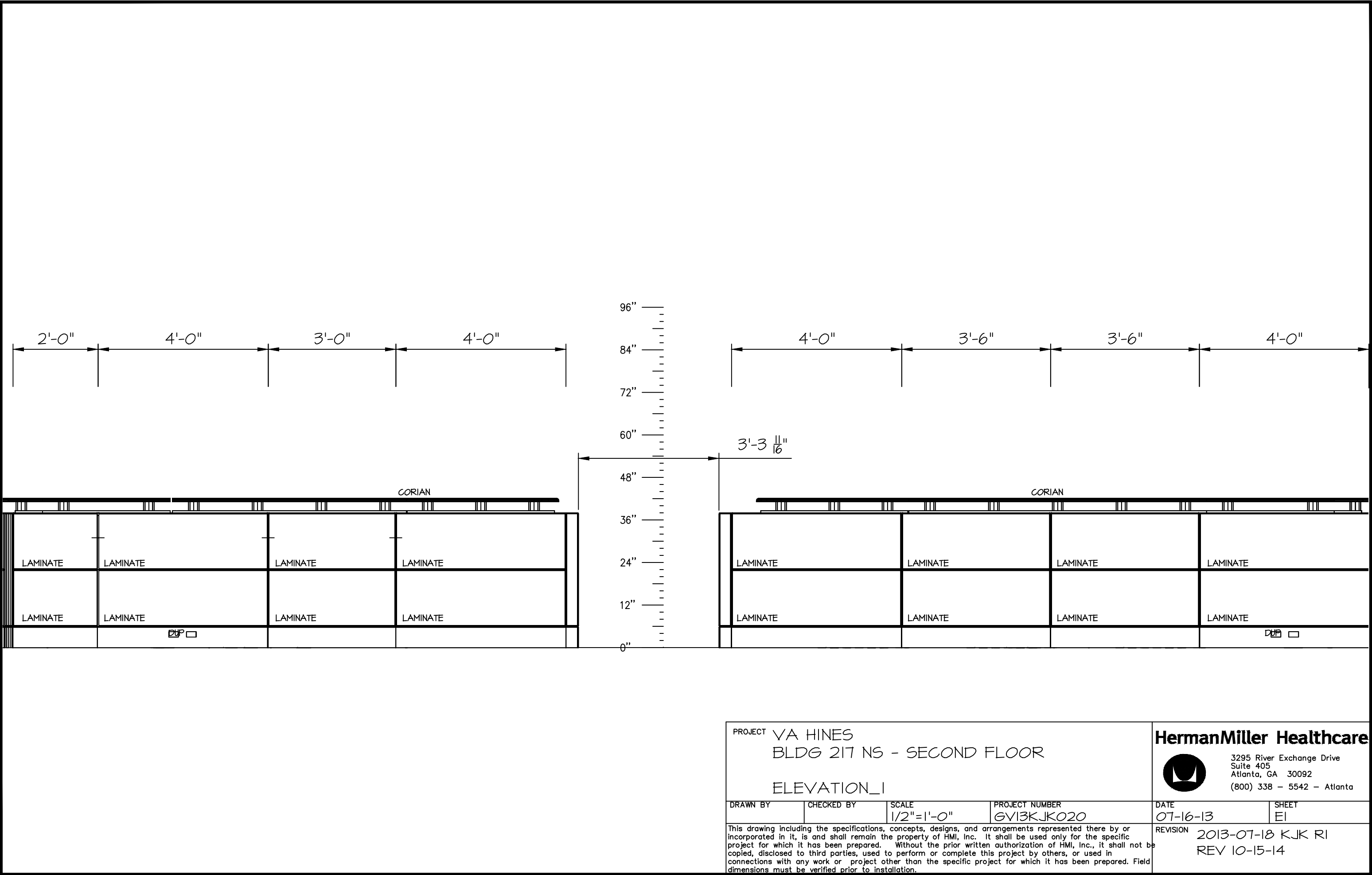
HermanMiller Healthcare

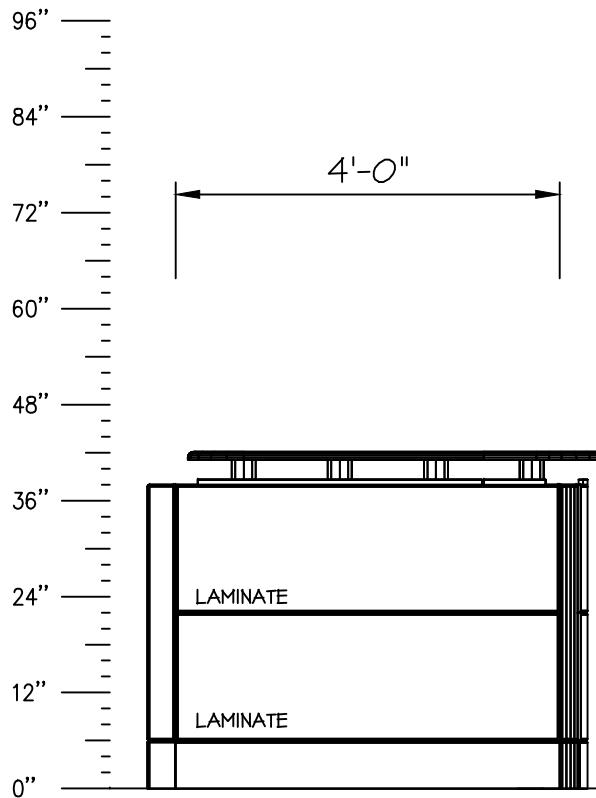



3295 River Exchange Drive
Suite 405
Atlanta, GA 30092
(800) 338 - 5542 - Atlanta

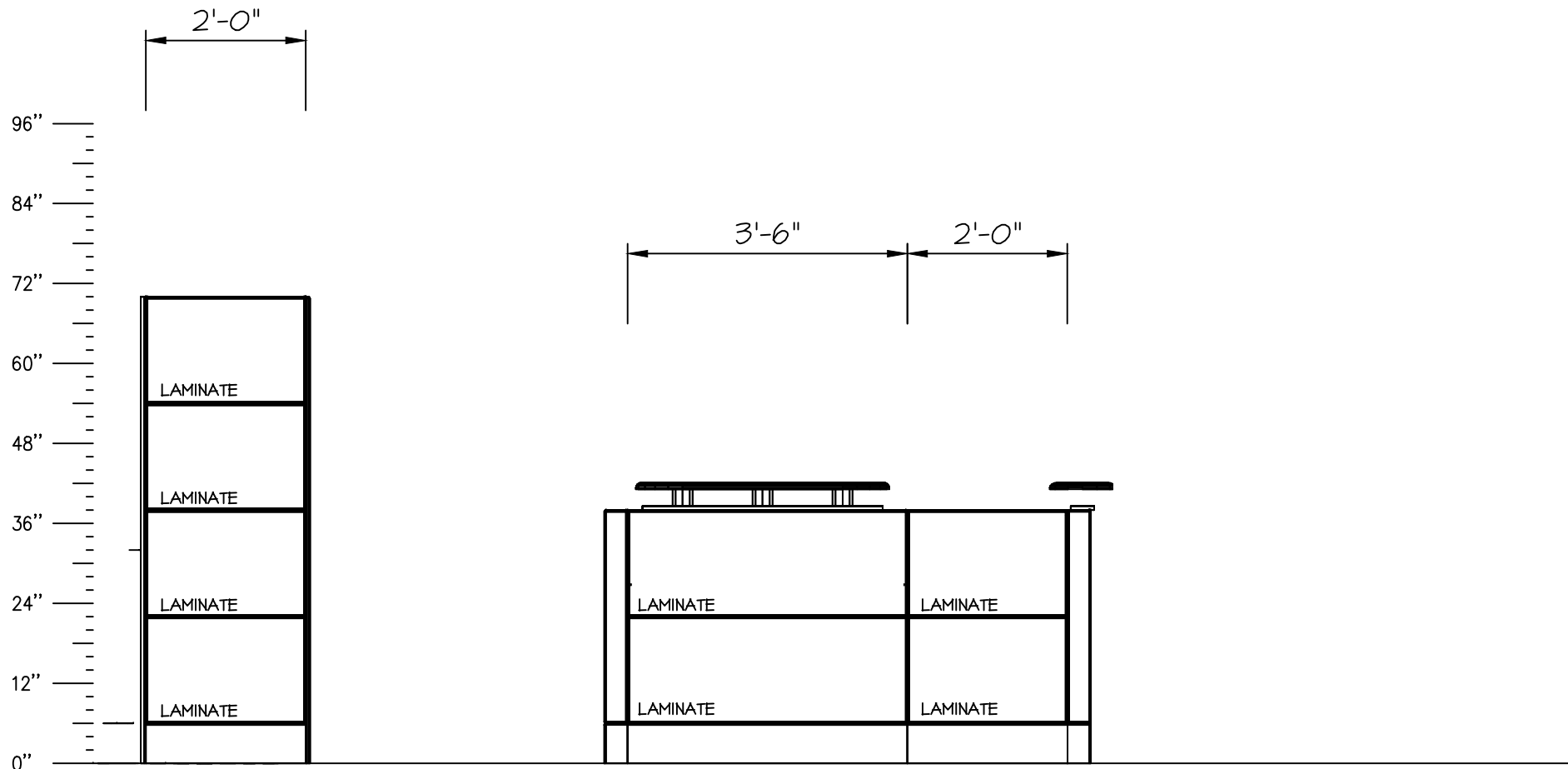
DATE 07-16-13 SHEET PLI

REVISION 2013-07-18 KJK RI
REV 10-15-14





PROJECT VA HINES BLDG 217 NS - SECOND FLOOR ELEVATION_2				HermanMiller Healthcare  3295 River Exchange Drive Suite 405 Atlanta, GA 30092 (800) 338 - 5542 - Atlanta	
DRAWN BY	CHECKED BY	SCALE 1/2"=1'-0"	PROJECT NUMBER GV13KJK020	DATE 07-16-13	SHEET E2
This drawing including the specifications, concepts, designs, and arrangements represented there by or incorporated in it, is and shall remain the property of HMI, Inc. It shall be used only for the specific project for which it has been prepared. Without the prior written authorization of HMI, Inc., it shall not be copied, disclosed to third parties, used to perform or complete this project by others, or used in connections with any work or project other than the specific project for which it has been prepared. Field dimensions must be verified prior to installation.				REVISION 2013-07-18 KJK RI REV 10-15-14	



PROJECT VA HINES
BLDG 217 NS - SECOND FLOOR

ELEVATION_3

HermanMiller Healthcare



3295 River Exchange Drive
Suite 405
Atlanta, GA 30092
(800) 338 - 5542 - Atlanta

DRAWN BY

CHECKED BY

SCALE

1/2" = 1'-0"

PROJECT NUMBER

GV13KJK020

DATE

07-16-13

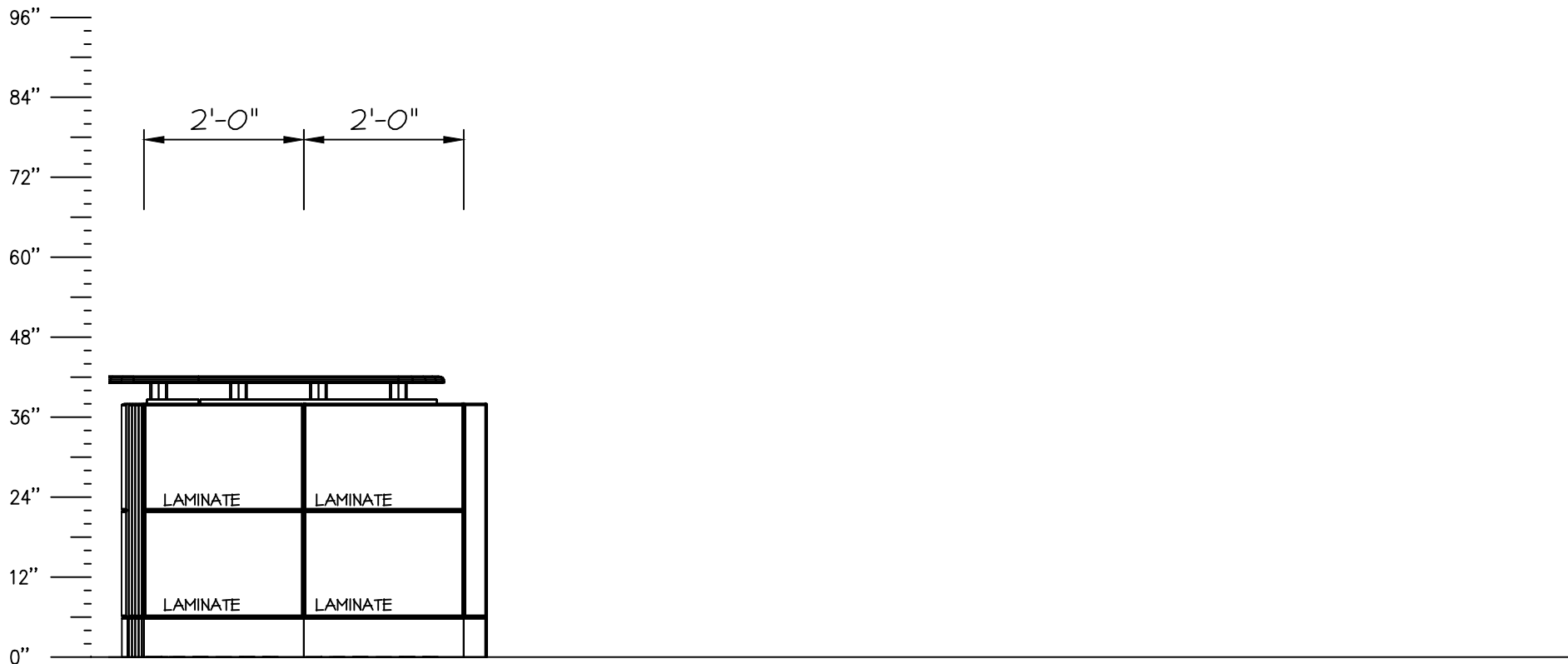
SHEET

E3

This drawing including the specifications, concepts, designs, and arrangements represented there by or incorporated in it, is and shall remain the property of HMI, Inc. It shall be used only for the specific project for which it has been prepared. Without the prior written authorization of HMI, Inc., it shall not be copied, disclosed to third parties, used to perform or complete this project by others, or used in connections with any work or project other than the specific project for which it has been prepared. Field dimensions must be verified prior to installation.

REVISION

2013-07-18 KJK RI
REV 10-15-14



PROJECT VA HINES
BLDG 217 NS - SECOND FLOOR

ELEVATION_4

HermanMiller Healthcare



3295 River Exchange Drive
Suite 405
Atlanta, GA 30092
(800) 338 - 5542 - Atlanta

DRAWN BY

CHECKED BY

SCALE
1/2"=1'-0"

PROJECT NUMBER

GV13KJK020

DATE

07-16-13

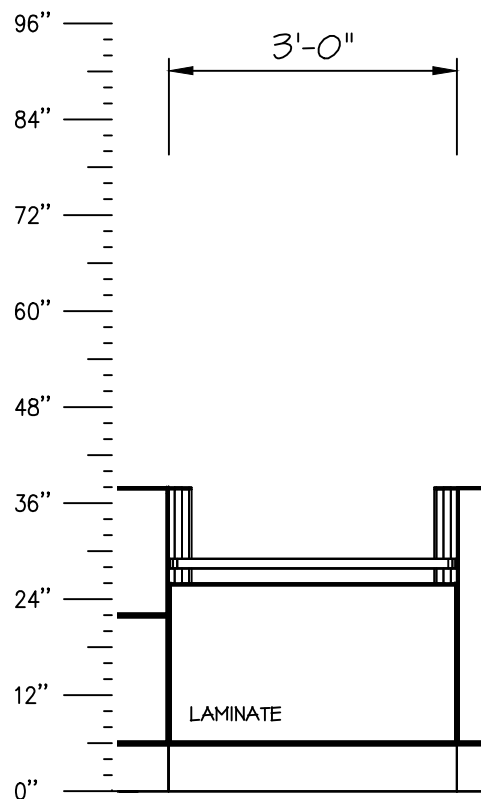
SHEET


E4

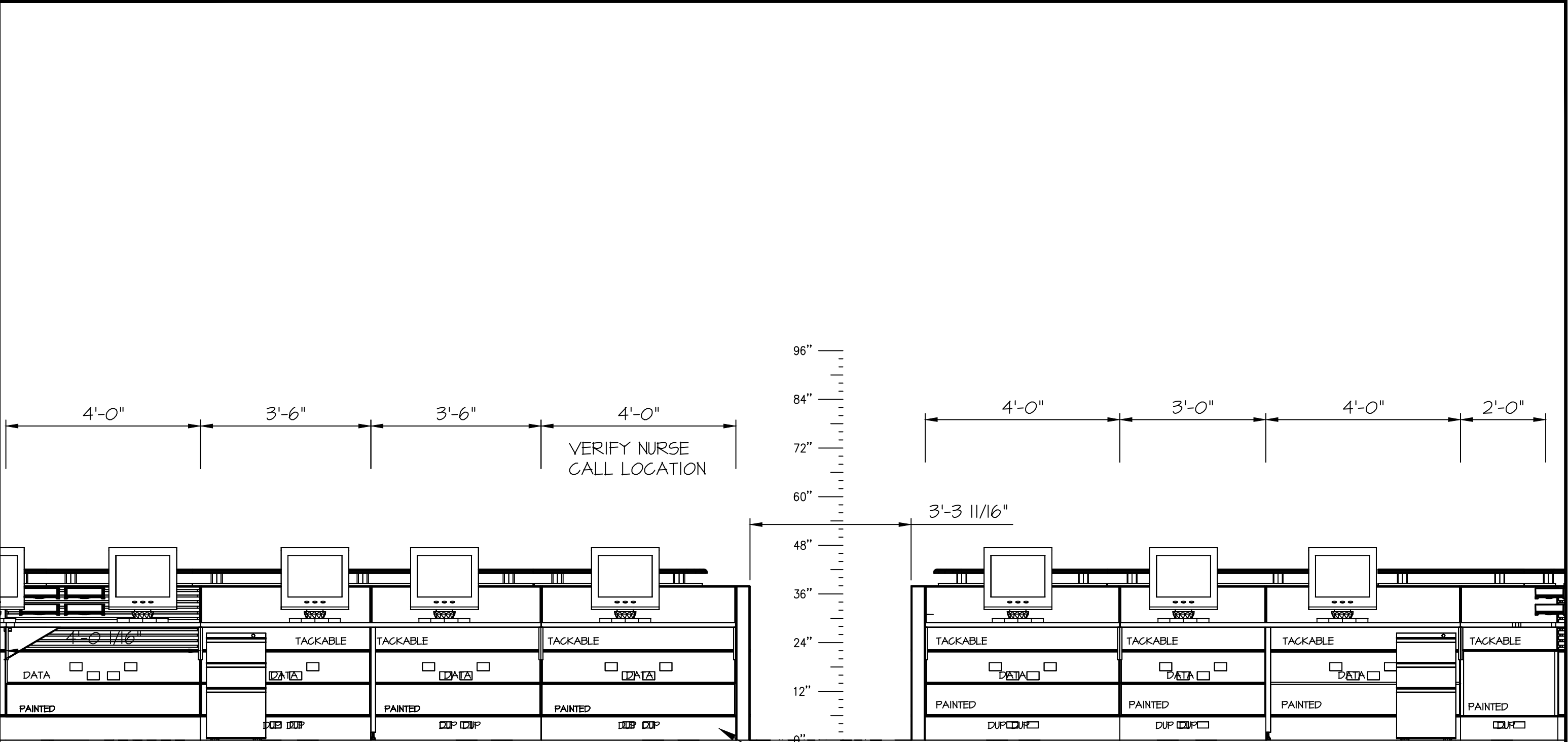
This drawing including the specifications, concepts, designs, and arrangements represented there by or incorporated in it, is and shall remain the property of HMI, Inc. It shall be used only for the specific project for which it has been prepared. Without the prior written authorization of HMI, Inc., it shall not be copied, disclosed to third parties, used to perform or complete this project by others, or used in connections with any work or project other than the specific project for which it has been prepared. Field dimensions must be verified prior to installation.

REVISION


2013-07-18 KJK RI
REV 10-15-14

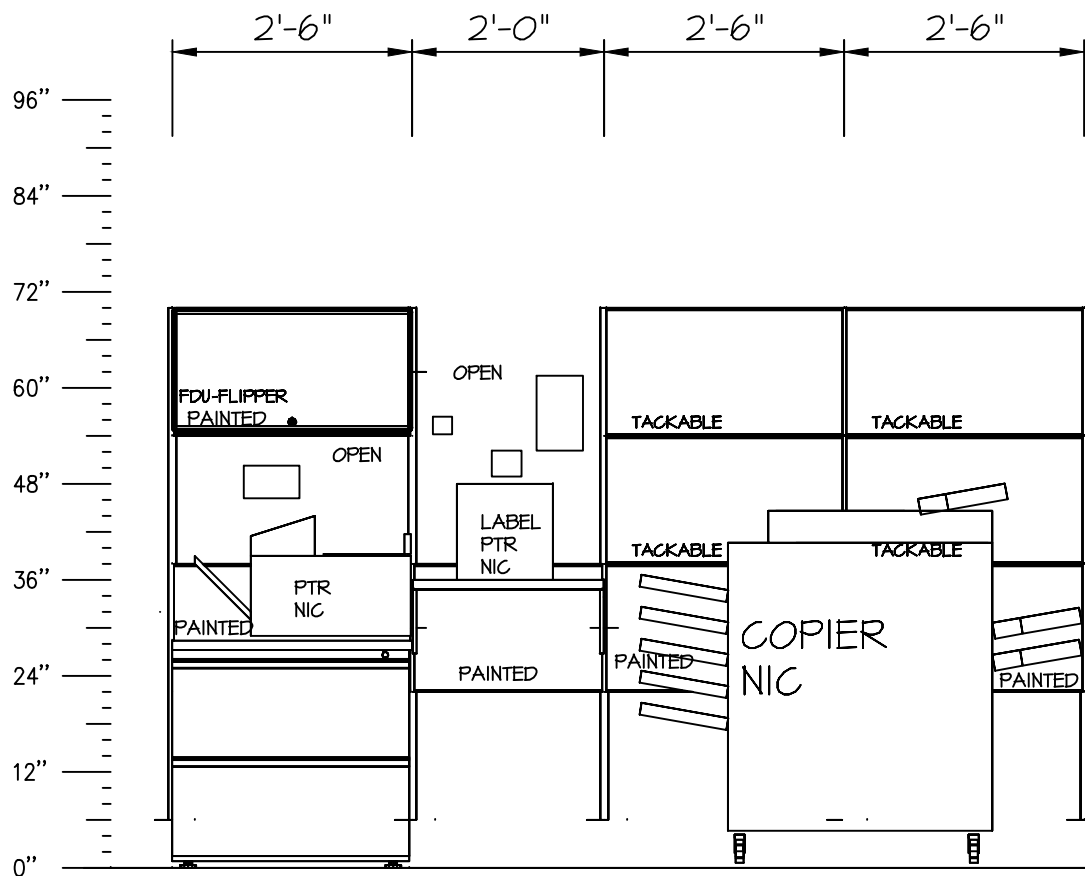



PROJECT VA HINES BLDG 217 NS - SECOND FLOOR ELEVATION_5				HermanMiller Healthcare  3295 River Exchange Drive Suite 405 Atlanta, GA 30092 (800) 338 - 5542 - Atlanta	
DRAWN BY	CHECKED BY	SCALE 1/2"=1'-0"	PROJECT NUMBER GV13KJK020	DATE 07-16-13	SHEET E5
This drawing including the specifications, concepts, designs, and arrangements represented there by or incorporated in it, is and shall remain the property of HMI, Inc. It shall be used only for the specific project for which it has been prepared. Without the prior written authorization of HMI, Inc., it shall not be copied, disclosed to third parties, used to perform or complete this project by others, or used in connections with any work or project other than the specific project for which it has been prepared. Field dimensions must be verified prior to installation.				REVISION 2013-07-18 KJK RI REV 10-15-14	



PANELS TO BE HARDWIRED
JUNCTION BOXES PROVIDED IN BASE OF PANEL
WIRING, RECEPTACLES, & COVERS PROVIDED AND INSTALLED BY EC

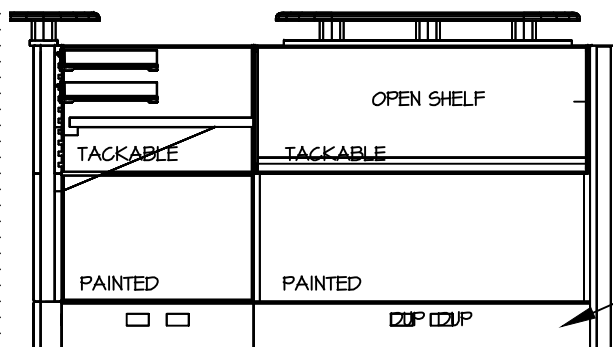
PROJECT VA HINES BLDG 217 NS - SECOND FLOOR ELEVATION_6				HermanMiller Healthcare  3295 River Exchange Drive Suite 405 Atlanta, GA 30092 (800) 338 - 5542 - Atlanta	
DRAWN BY	CHECKED BY	SCALE 1/2"=1'-0"	PROJECT NUMBER GV13KJK020	DATE 07-16-13	SHEET E6
This drawing including the specifications, concepts, designs, and arrangements represented there by or incorporated in it, is and shall remain the property of HMI, Inc. It shall be used only for the specific project for which it has been prepared. Without the prior written authorization of HMI, Inc., it shall not be copied, disclosed to third parties, used to perform or complete this project by others, or used in connections with any work or project other than the specific project for which it has been prepared. Field dimensions must be verified prior to installation.				REVISION 2013-07-18 KJK RI REV 10-15-14	




PROJECT VA HINES BLDG 217 NS - SECOND FLOOR ELEVATION_7				HermanMiller Healthcare  3295 River Exchange Drive Suite 405 Atlanta, GA 30092 (800) 338 - 5542 - Atlanta	
DRAWN BY	CHECKED BY	SCALE 1/2"=1'-0"	PROJECT NUMBER GV13KJK020	DATE 07-16-13	SHEET E7
This drawing including the specifications, concepts, designs, and arrangements represented there by or incorporated in it, is and shall remain the property of HMI, Inc. It shall be used only for the specific project for which it has been prepared. Without the prior written authorization of HMI, Inc., it shall not be copied, disclosed to third parties, used to perform or complete this project by others, or used in connections with any work or project other than the specific project for which it has been prepared. Field dimensions must be verified prior to installation.				REVISION 2013-07-18 KJK RI REV 10-15-14	

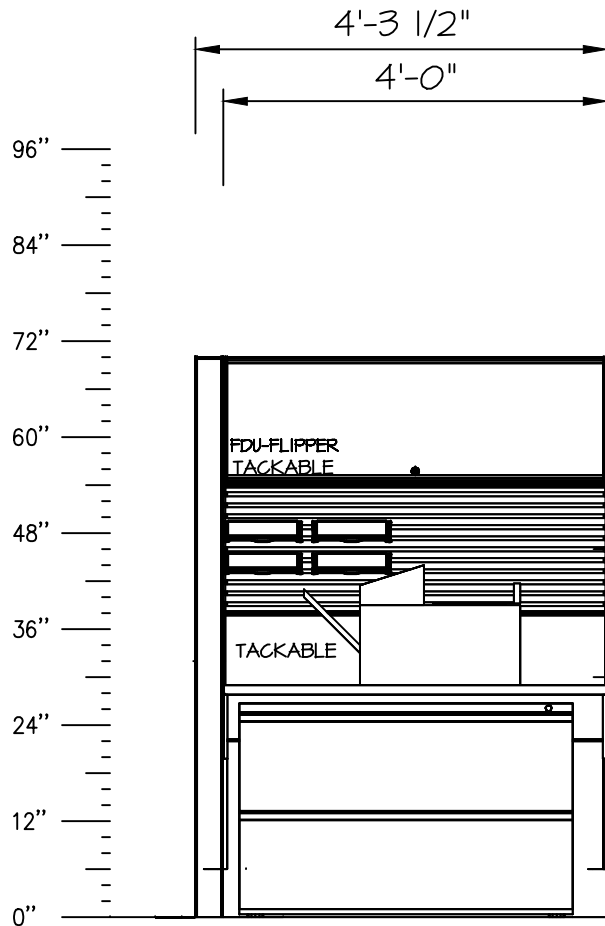
96"
84"
72"
60"
48"
36"
24"
12"
0"

2'-0" 3'-6"



PANELS TO BE HARDWIRED
JUNCTION BOXES PROVIDED IN BASE OF PANEL
WIRING, RECEPTACLES, & COVERS PROVIDED AND INSTALLED BY EC

PROJECT VA HINES BLDG 217 NS - SECOND FLOOR ELEVATION_8				HermanMiller Healthcare  3295 River Exchange Drive Suite 405 Atlanta, GA 30092 (800) 338 - 5542 - Atlanta	
DRAWN BY	CHECKED BY	SCALE 1/2"=1'-0"	PROJECT NUMBER GV13KJK020	DATE 07-16-13	SHEET E8
This drawing including the specifications, concepts, designs, and arrangements represented there by or incorporated in it, is and shall remain the property of HMI, Inc. It shall be used only for the specific project for which it has been prepared. Without the prior written authorization of HMI, Inc., it shall not be copied, disclosed to third parties, used to perform or complete this project by others, or used in connections with any work or project other than the specific project for which it has been prepared. Field dimensions must be verified prior to installation.				REVISION 2013-07-18 KJK RI REV 10-15-14	



PROJECT VA HINES
BLDG 217 NS - SECOND FLOOR

ELEVATION_9

HermanMiller Healthcare



3295 River Exchange Drive
Suite 405
Atlanta, GA 30092
(800) 338 - 5542 - Atlanta

DRAWN BY

CHECKED BY

SCALE

1/2"=1'-0"

PROJECT NUMBER

GV13KJK020

DATE

07-16-13

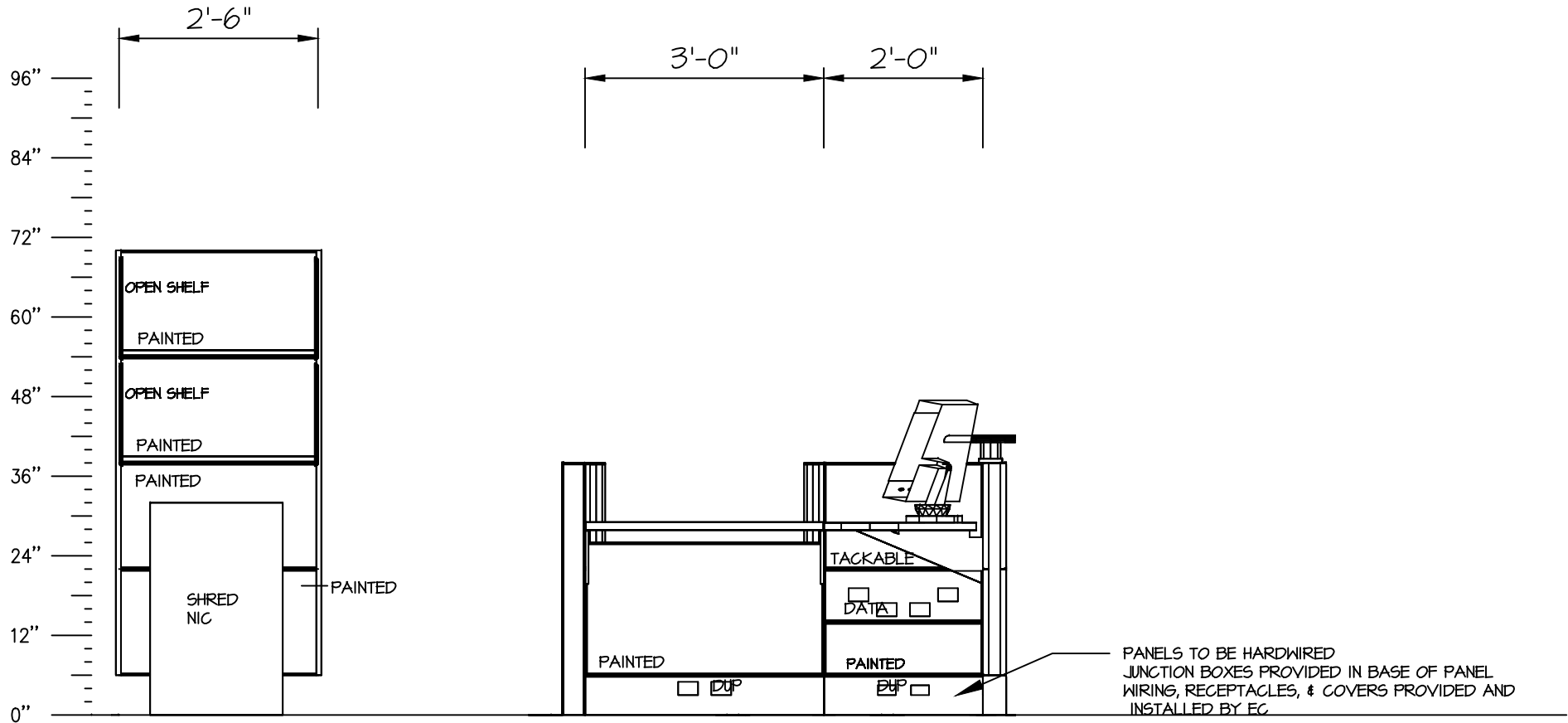
SHEET


E9

This drawing including the specifications, concepts, designs, and arrangements represented there by or incorporated in it, is and shall remain the property of HMI, Inc. It shall be used only for the specific project for which it has been prepared. Without the prior written authorization of HMI, Inc., it shall not be copied, disclosed to third parties, used to perform or complete this project by others, or used in connections with any work or project other than the specific project for which it has been prepared. Field dimensions must be verified prior to installation.

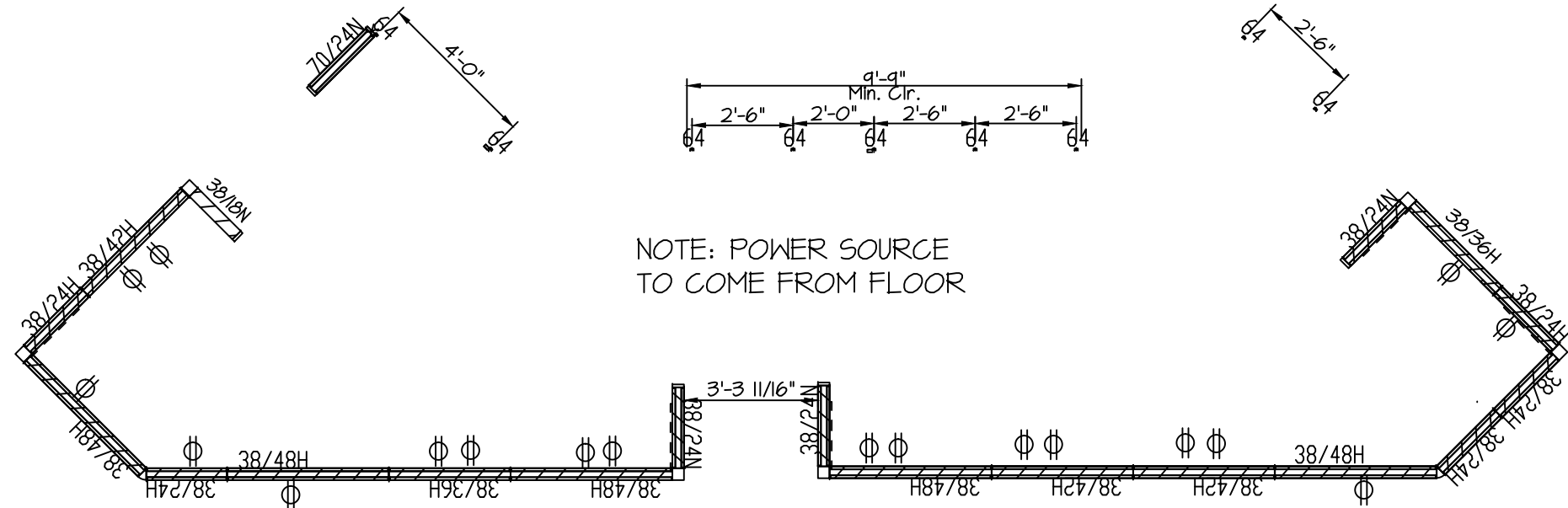
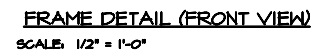
REVISION


2013-07-18 KJK RI
REV 10-15-14



PROJECT VA HINES BLDG 217 NS - SECOND FLOOR ELEVATION_10				HermanMiller Healthcare  3295 River Exchange Drive Suite 405 Atlanta, GA 30092 (800) 338 - 5542 - Atlanta	
DRAWN BY	CHECKED BY	SCALE 1/2"=1'-0"	PROJECT NUMBER GV13KJK020	DATE 07-16-13	SHEET E10
This drawing including the specifications, concepts, designs, and arrangements represented there by or incorporated in it, is and shall remain the property of HMI, Inc. It shall be used only for the specific project for which it has been prepared. Without the prior written authorization of HMI, Inc., it shall not be copied, disclosed to third parties, used to perform or complete this project by others, or used in connections with any work or project other than the specific project for which it has been prepared. Field dimensions must be verified prior to installation.				REVISION 2013-07-18 KJK RI REV 10-15-14	

1. JUNCTION BOXES ARE SUPPLIED BY HERMAN MILLER. RECEPTACLES AND WIRING PROVIDED AND INSTALLED BY ELECTRICAL CONTRACTOR.
2. POWER ENTRY TO BUILDING POWER SOURCE BY ELECTRICAL CONTRACTOR.
3. ALL 1/2" ALUMINUM MC CABLING SUPPLIED AND INSTALLED BY ELECTRICAL CONTRACTOR.
4. COMMUNICATIONS ENTRY, CABLING AND BOXES BY OTHERS.



PROJECT				VA HINES BLDG 217 NS - SECOND FLOOR SUGG'D UTILITY LOCATION PLAN PLAN_2				HermanMiller Healthcare  3295 River Exchange Drive Suite 405 Atlanta, GA 30092 (800) 338 - 5542 - Atlanta			
DRAWN BY		CHECKED BY		SCALE		PROJECT NUMBER		DATE		SHEET	
				1/4" = 1'-0"		GV13KJK020		07-16-13		PL2	
This drawing including the specifications, concepts, designs, and arrangements represented there by or incorporated in it, is and shall remain the property of HMI, Inc. It shall be used only for the specific project for which it has been prepared. Without the prior written authorization of HMI, Inc., it shall not be copied, disclosed to third parties, used to perform or complete this project by others, or used in connections with any work or project other than the specific project for which it has been prepared. Field dimensions must be verified prior to installation.								REVISION 2013-07-18 KJK RI REV 10-15-14			