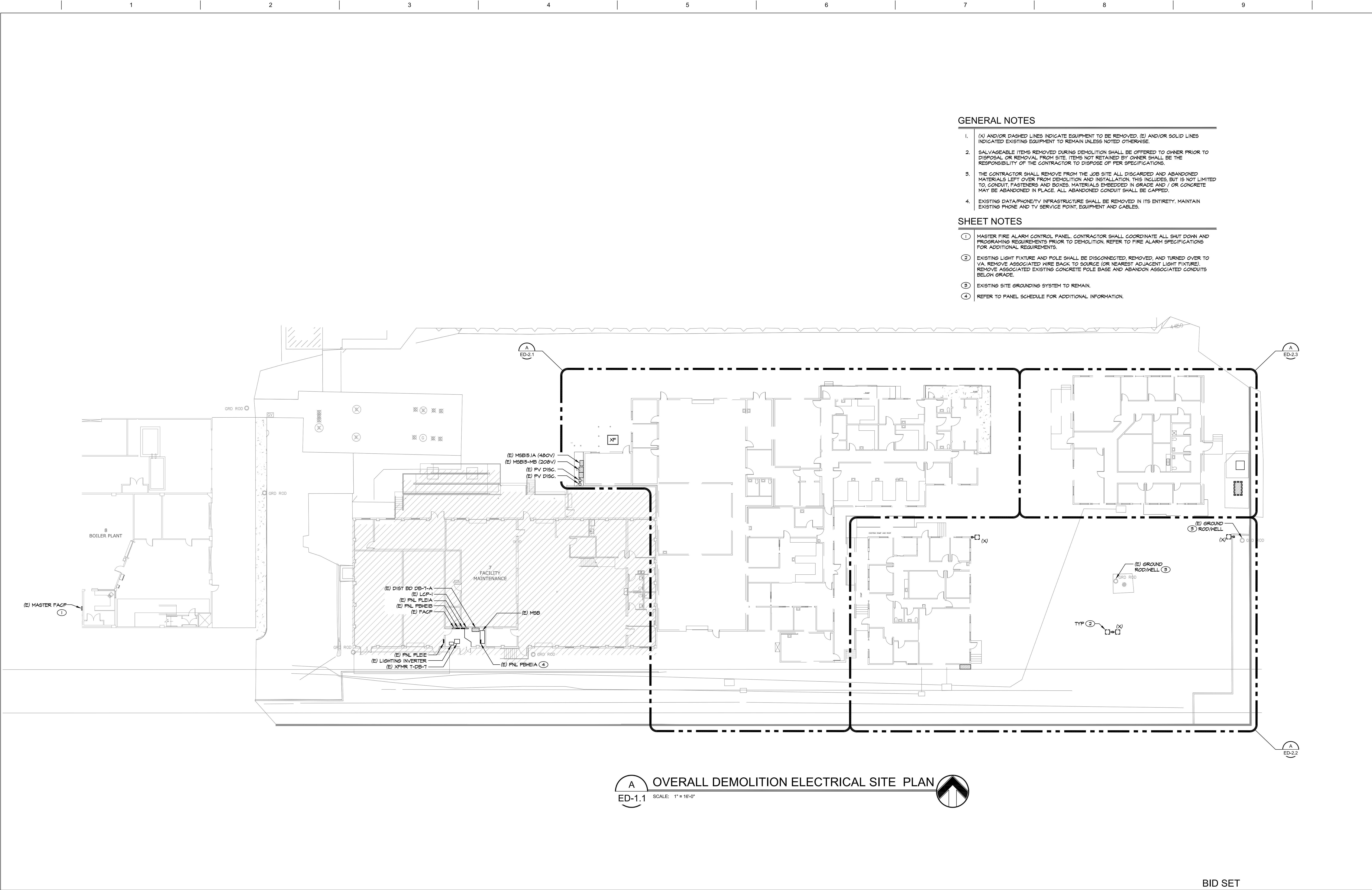


0  
three inches = one foot  
1  
0  
one and one half inches = one foot  
2  
0  
one inch = one foot  
2  
0  
three quarters inch = one foot  
4  
0  
one half inch = one foot  
4  
0  
three eighths inch = one foot  
8  
0  
one quarter inch = one foot  
16  
0  
one eighth inch = one foot






GENERAL NOTES

- (X) AND/OR DASHED LINES INDICATE EQUIPMENT TO BE REMOVED. (E) AND/OR SOLID LINES INDICATED EXISTING EQUIPMENT TO REMAIN UNLESS NOTED OTHERWISE.
- SALVAGEABLE ITEMS REMOVED DURING DEMOLITION SHALL BE OFFERED TO OWNER PRIOR TO DISPOSAL OR REMOVAL FROM SITE. ITEMS NOT RETAINED BY OWNER SHALL BE THE RESPONSIBILITY OF THE CONTRACTOR TO DISPOSE OF PER SPECIFICATIONS.
- THE CONTRACTOR SHALL REMOVE FROM THE JOB SITE ALL DISCARDED AND ABANDONED MATERIALS LEFT OVER FROM DEMOLITION AND INSTALLATION. THIS INCLUDES, BUT IS NOT LIMITED TO, CONDUIT, FASTENERS AND BOXES. MATERIALS EMBEDDED IN GRADE AND / OR CONCRETE MAY BE ABANDONED IN PLACE. ALL ABANDONED CONDUIT SHALL BE CAPPED.
- EXISTING DATA/PHONE/TV INFRASTRUCTURE SHALL BE REMOVED IN ITS ENTIRETY. MAINTAIN EXISTING PHONE AND TV SERVICE POINT, EQUIPMENT AND CABLES.

SHEET NOTES

- MASTER FIRE ALARM CONTROL PANEL. CONTRACTOR SHALL COORDINATE ALL SHUT DOWN AND PROGRAMING REQUIREMENTS PRIOR TO DEMOLITION. REFER TO FIRE ALARM SPECIFICATIONS FOR ADDITIONAL REQUIREMENTS.
- EXISTING LIGHT FIXTURE AND POLE SHALL BE DISCONNECTED, REMOVED, AND TURNED OVER TO VA. REMOVE ASSOCIATED WIRE BACK TO SOURCE (OR NEAREST ADJACENT LIGHT FIXTURE). REMOVE ASSOCIATED EXISTING CONCRETE POLE BASE AND ABANDON ASSOCIATED CONDUITS BELOW GRADE.
- EXISTING SITE GROUNDING SYSTEM TO REMAIN.
- REFER TO PANEL SCHEDULE FOR ADDITIONAL INFORMATION.

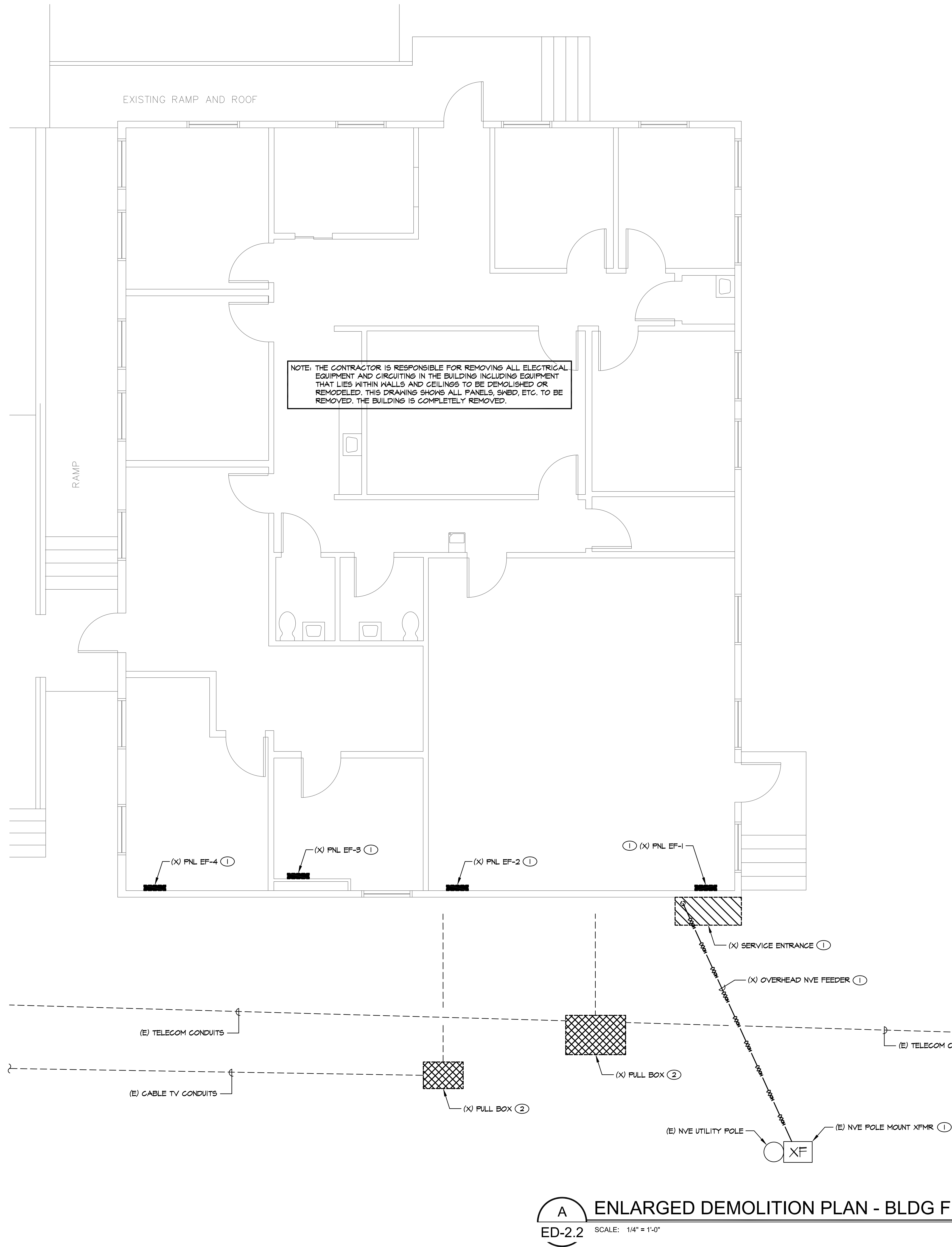
A OVERALL DEMOLITION ELECTRICAL SITE PLAN  
ED-1.1 SCALE: 1" = 16'-0"

Revision #1		4-04-17	CONSULTANTS:		ARCHITECT/ENGINEERS:		Drawing Title		Project Title		Project Number		Office of	
			<div><div><b>PK Electrical, Inc.</b> <i>Engineering • Design • Consulting</i> 681 Sierra Rose Dr, Ste B   Reno, NV 89511   775.826.9010 5105 DTC Pkwy, Ste 420   Greenwood Village, CO 80111   720.481.3290 pkelctrcal.com © 2008-2015 PK Electrical, Inc. 10040</div></div>		<div><div><b>SIKORA</b> ARCHITECTURE 489 CORVALLIS COURT RENO, NEVADA 89511 7 7 5 - 8 5 2 - 5 8 0 0 eric@sikora-archtitecture.com JOB: 11-007</div></div>		OVERALL DEMOLITION ELECTRICAL SITE PLAN		DEMOLITION OF BUILDINGS: 15A, 15B, F, K, 138		654-16-603		Office of Construction and Facilities Management:	
					Approved: Project Director		Location 975 KIRMAN AVE. RENO, NV 89502		Drawing Number		<div>Department of Veterans Affairs</div>			
						Date 4-3-17		Checked JEG		ED-1.1				
								Drawn JGA		Dwg. 2 of 10				





0  
three inches = one foot  
1  
0  
one and one half inches = one foot  
6"  
2  
0  
one inch = one foot  
6"  
2  
0  
three quarters inch = one foot  
6"  
4  
0  
one half inch = one foot  
6"  
4  
0  
three eighths inch = one foot  
6"  
8  
0  
one quarter inch = one foot  
6"  
4  
0  
one eighth inch = one foot  
6"  
16




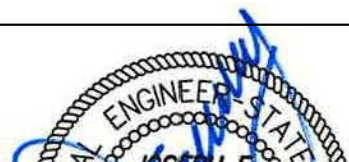

### GENERAL NOTES

1. (X) AND/OR DASHED LINES INDICATE EXISTING EQUIPMENT TO BE REMOVED, (R) AND/OR DASHED LINES INDICATE EXISTING EQUIPMENT TO BE RELOCATED, (E) AND/OR SOLID LINES INDICATE EXISTING EQUIPMENT TO REMAIN UNLESS NOTED OTHERWISE.
2. SALVAGEABLE ITEMS REMOVED DURING DEMOLITION SHALL BE OFFERED TO OWNER PRIOR TO DISPOSAL OR REMOVAL FROM SITE. ITEMS NOT RETAINED BY OWNER SHALL BE THE RESPONSIBILITY OF THE CONTRACTOR TO DISPOSE OF PER SPECIFICATIONS.
3. THE CONTRACTOR SHALL REMOVE FROM THE JOB SITE ALL DISCARDED AND ABANDONED MATERIALS LEFT OVER FROM DEMOLITION AND INSTALLATION. THIS INCLUDES, BUT IS NOT LIMITED TO, CONDUIT, FASTENERS AND BOXES. MATERIALS EMBEDDED IN GRADE AND / OR CONCRETE MAY BE ABANDONED IN PLACE. ALL ABANDONED CONDUIT SHALL BE CAPPED.
4. EXISTING DATA/PHONE/TV INFRASTRUCTURE SHALL BE REMOVED IN ITS ENTIRETY. MAINTAIN EXISTING PHONE AND TV SERVICE POINT, EQUIPMENT AND CABLES.
5. EXISTING FIRE ALARM SYSTEM SHALL BE REMOVED IN ITS ENTIRETY.
6. EXISTING FIRE SUPPRESSION SYSTEM TO BE REMOVED. REMOVE ALL ASSOCIATED ELECTRICAL COMPONENTS.
7. EXISTING A/V SYSTEM SHALL BE REMOVED IN ITS ENTIRETY.
8. EXISTING LIGHTING INFRASTRUCTURE SHALL BE REMOVED IN ITS ENTIRETY.
4. EXISTING RECEPTACLE, PANELBOARDS, DISCONNECTS, MOTOR STARTERS AND ASSOCIATED EQUIPMENT SHALL BE REMOVED IN ITS ENTIRETY UNLESS NOTED OTHERWISE.

### SHEET NOTES

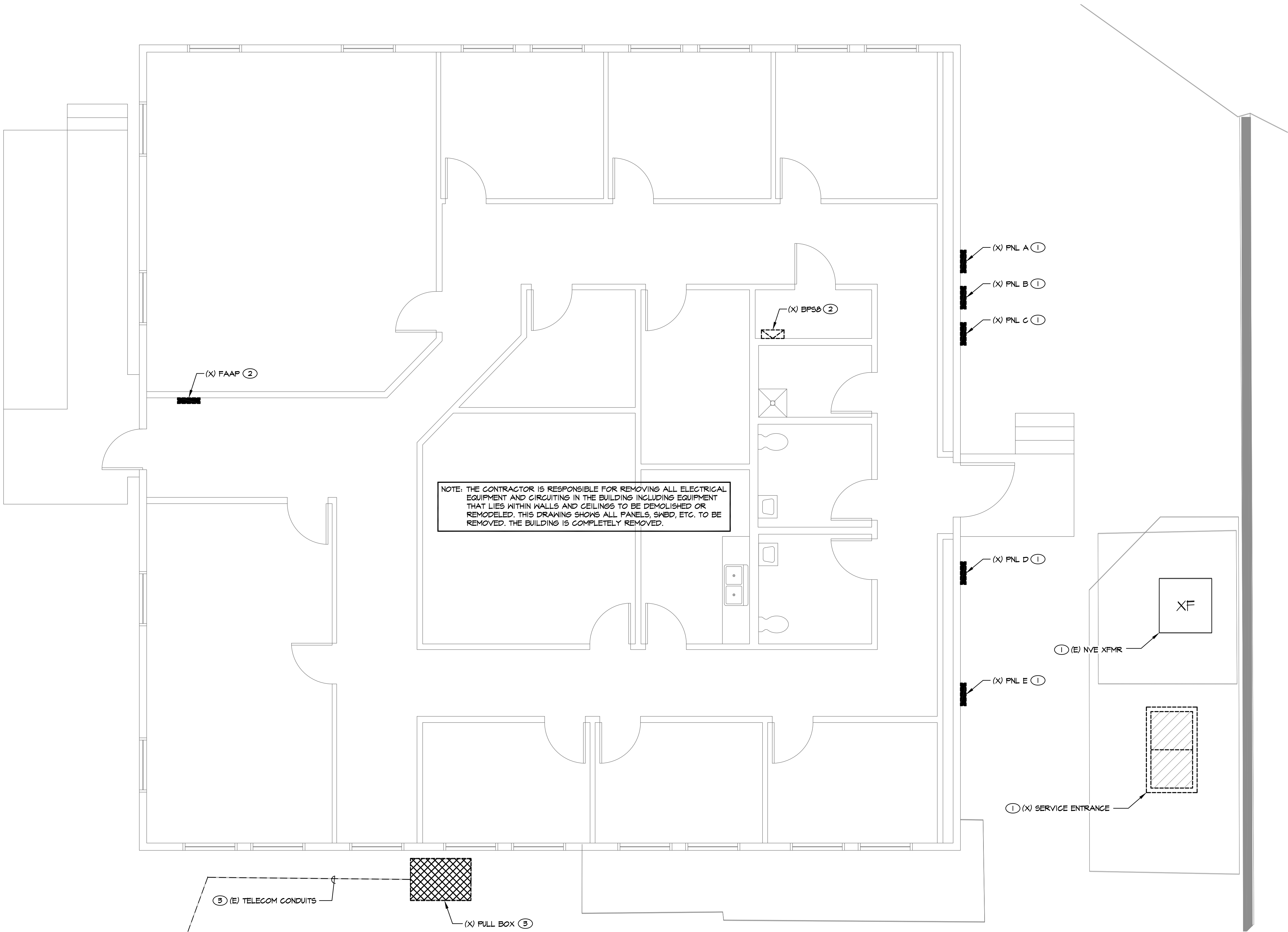
- ① REFER TO ONELINE DIAGRAM FOR DEMOLITION REQUIREMENTS.
- ② REFER TO TELECOM PLANS FOR ADDITIONAL INFORMATION.

### BID SET

Revision #1		4-04-17	CONSULTANTS:		ARCHITECT/ENGINEERS:		Drawing Title		Project Title		Project Number		Office of Construction and Facilities Management:		
			 <div><b>PK Electrical, Inc.</b> <i>Engineering · Design · Consulting</i> <small>681 Sierra Rose Dr, Ste B   Reno, NV 89511   775.826.9010 5105 DTC Pky, Ste 420   Greenwood Village, CO 80131   720.481.3290 pk electrical.com © 2008-2015 PK Electrical, Inc. 10040</small></div>				 <div><b>SIKORA</b> <b>ARCHITECTURE</b> 488 CORVALLIS COURT RENO, NEVADA 89511 775 - 852 - 5800 eric@sikora-architecture.com JOB: 11-007</div>		ENLARGED DEMOLITION PLAN - BLDG F		DEMOLITION OF BUILDINGS: 15A, 15B, F, K, 138		654-16-603		Department of Veterans Affairs
Building Number 15A, 15B, F, K, 138															
							Approved: Project Director		Location 975 KIRMAN AVE. RENO, NV 89502		Drawing Number		ED-2.2  Dwg. 6 of 10		
									Date 4-3-17		Checked JEG	Drawn JGA			



0  
three inches = one foot  
1  
0  
one and one half inches = one foot  
6"  
2  
0  
one inch = one foot  
6"  
2  
0  
three quarters inch = one foot  
6"  
4  
0  
one half inch = one foot  
4  
0  
three eighths inch = one foot  
8  
4  
0  
one quarter inch = one foot  
16  
0  
one eighth inch = one foot  
16



**A** ENLARGED DEMOLITION PLAN - 138 FMS  
ED-2.3 SCALE: 1/4" = 1'-0"

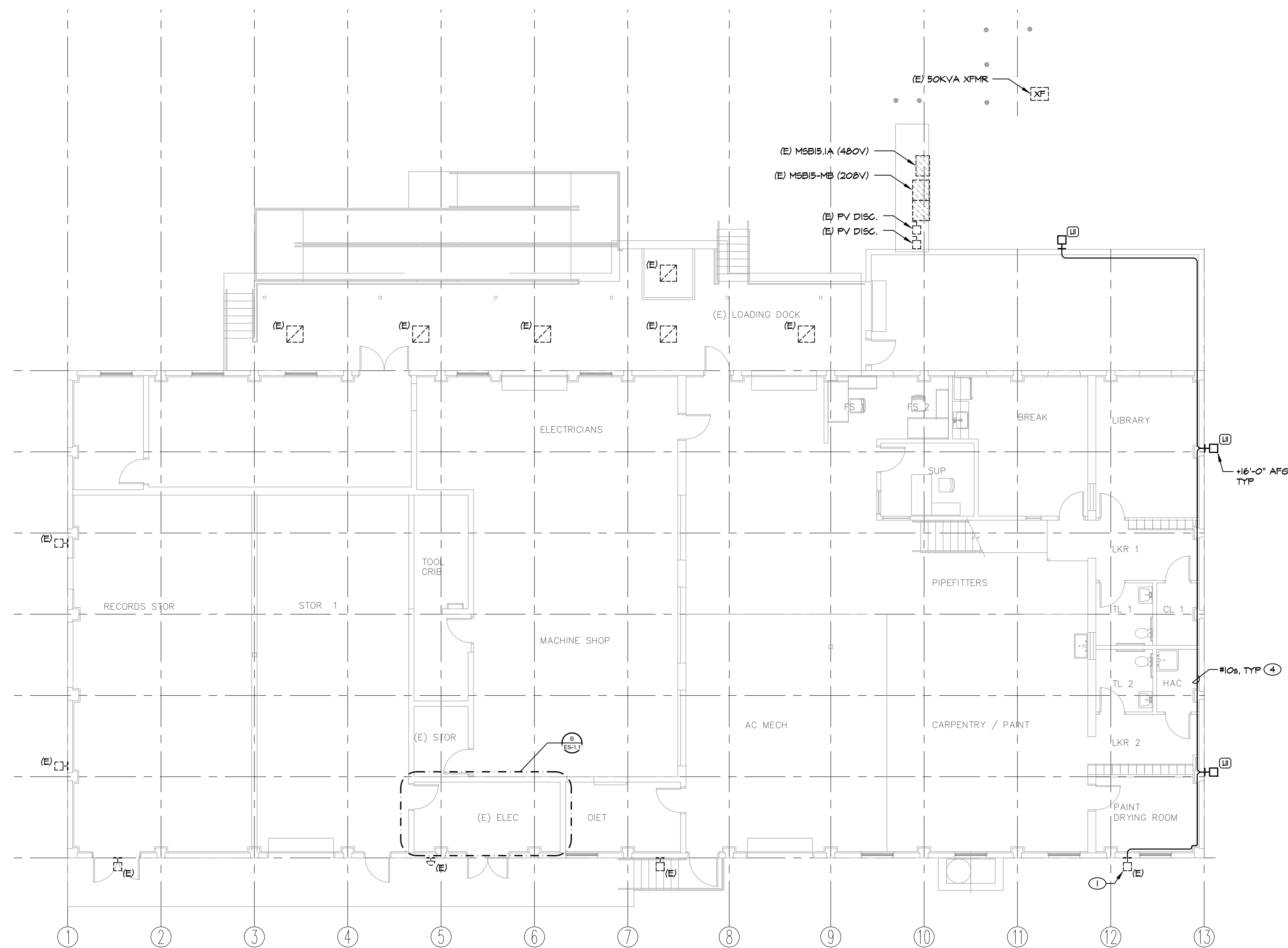
- GENERAL NOTES**
- (X) AND/OR DASHED LINES INDICATE EXISTING EQUIPMENT TO BE REMOVED, (R) AND/OR DASHED LINES INDICATE EXISTING EQUIPMENT TO BE RELOCATED, (E) AND/OR SOLID LINES INDICATE EXISTING EQUIPMENT TO REMAIN UNLESS NOTED OTHERWISE.
  - SALVAGEABLE ITEMS REMOVED DURING DEMOLITION SHALL BE OFFERED TO OWNER PRIOR TO DISPOSAL OR REMOVAL FROM SITE. ITEMS NOT RETAINED BY OWNER SHALL BE THE RESPONSIBILITY OF THE CONTRACTOR TO DISPOSE OF PER SPECIFICATIONS.
  - THE CONTRACTOR SHALL REMOVE FROM THE JOB SITE ALL DISCARDED AND ABANDONED MATERIALS LEFT OVER FROM DEMOLITION AND INSTALLATION. THIS INCLUDES, BUT IS NOT LIMITED TO, CONDUIT, FASTENERS AND BOXES, MATERIALS EMBEDDED IN GRADE AND / OR CONCRETE MAY BE ABANDONED IN PLACE. ALL ABANDONED CONDUIT SHALL BE CAPPED.
  - EXISTING DATA/PHONE/TV INFRASTRUCTURE SHALL BE REMOVED IN ITS ENTIRETY. MAINTAIN EXISTING PHONE AND TV SERVICE POINT, EQUIPMENT AND CABLES.
  - EXISTING FIRE ALARM SYSTEM SHALL BE REMOVED IN ITS ENTIRETY.
  - EXISTING FIRE SUPPRESSION SYSTEM TO BE REMOVED, REMOVE ALL ASSOCIATED ELECTRICAL COMPONENTS.
  - EXISTING AV SYSTEM SHALL BE REMOVED IN ITS ENTIRETY.
  - EXISTING LIGHTING INFRASTRUCTURE SHALL BE REMOVED IN ITS ENTIRETY.

- SHEET NOTES**
- REFER TO DEMOLITION ONLINE DIAGRAM FOR ADDITIONAL INFORMATION.
  - EXISTING FIRE ALARM SYSTEM SHALL BE DISCONNECTED AND REMOVED IN ITS ENTIRETY. COORDINATE WITH EXISTING MAIN FIRE ALARM PANEL, LOCATED IN BLDG B.
  - REFER TO TELECOM PLANS FOR ADDITIONAL INFORMATION.

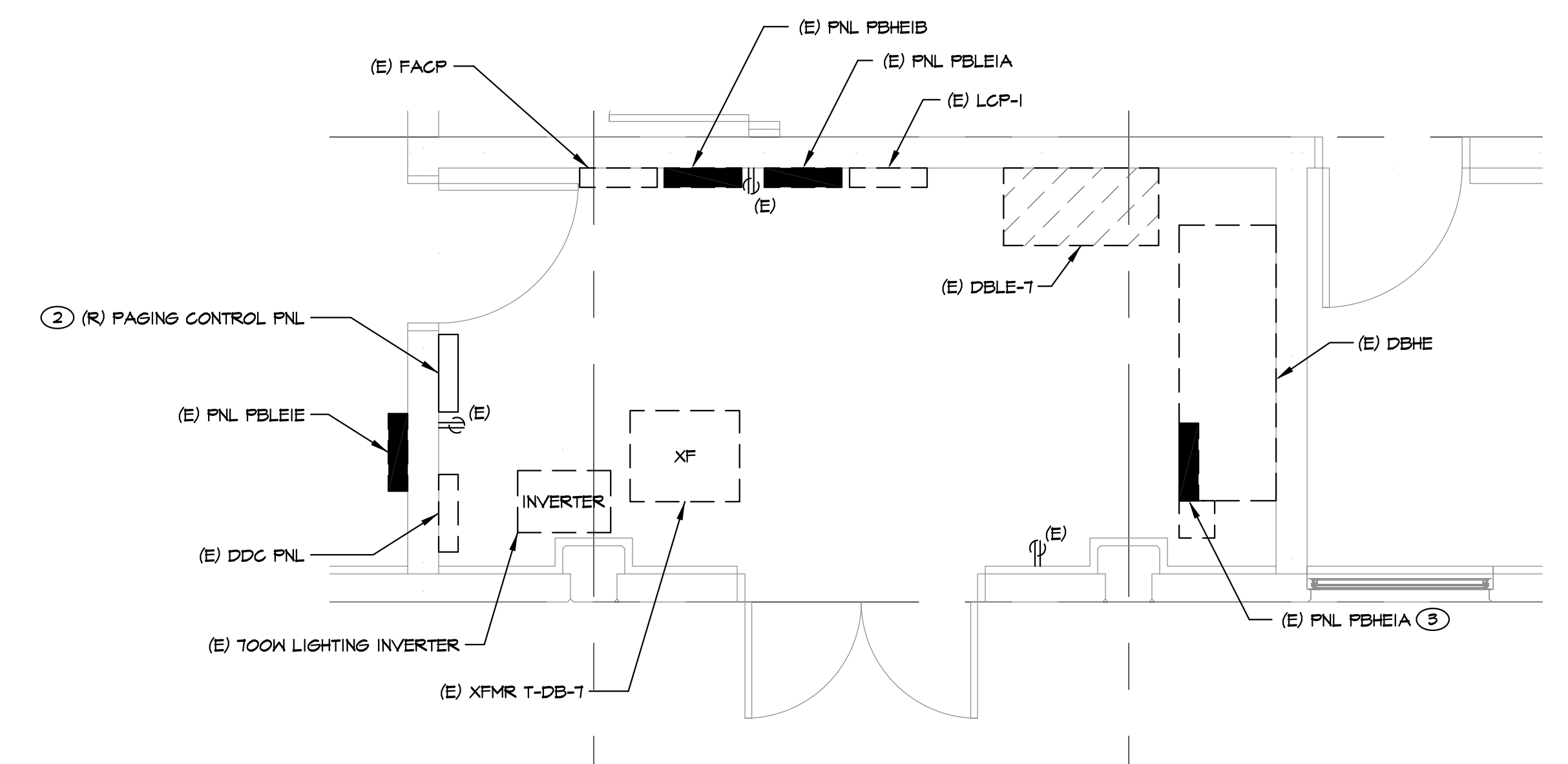
Revision #1		4-04-17	CONSULTANTS:		ARCHITECT/ENGINEERS:		Drawing Title		Project Title		Project Number		Office of Construction and Facilities Management:	
			 <b>PK Electrical, Inc.</b> <i>Engineering · Design · Consulting</i> 681 Sierra Rose Dr, Ste B   Reno, NV 89511   775.826.9010 9105 DTC Pkwy, Ste 420   Greenwood Village, CO 80131   720.481.3290 pk@electrical.com © 2008-2015 PK Electrical, Inc. 10040				ENLARGED DEMOLITION PLAN - 138 FMS		DEMOLITION OF BUILDINGS: 15A, 15B, F, K, 138		654-16-603			
							Approved: Project Director		Location 975 KIRMAN AVE. RENO, NV 89502		Building Number 15A, 15B, F, K, 138			
					JOB: 11-007		Date 4-3-17		Checked JEG		Drawn JGA		ED-2.3 Dwg. 7 of 10	
													Department of Veterans Affairs	











**LIGHTING PLAN - FIRST LEVEL**

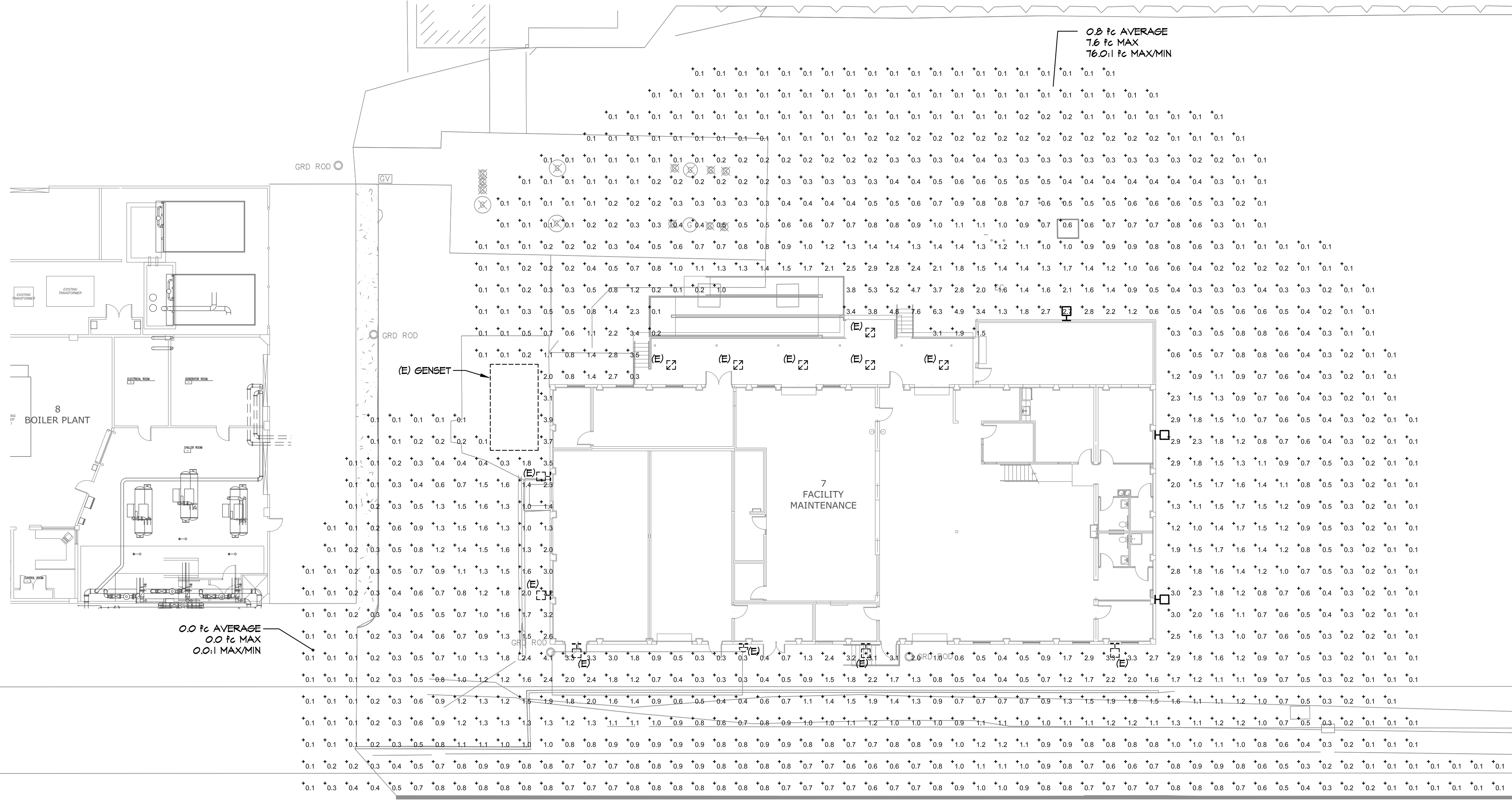


ENLARGED ELECTRICAL  
ROOM PLAN

SCALE: 3/8" = 1'-0"

<div> <div>Revision #1</div> <div>4-04-17</div> </div>	<div>CONSULTANTS:</div> <div>  <div> <b>PK Electrical, Inc.</b>  <i>Engineering · Design · Consulting</i>  <small>681 Sierra Rose Dr, Ste B   Reno, NV 89511   775.826.9010  3100 DTG Pkwy, Ste 400   Underwood Village, CO 80111   720.481.3200  pkelctrical.com © 2008-2015 PK Electrical, Inc. 16040</small> </div> </div>		<div> <div>ARCHITECT/ENGINEERS:</div> <div>  <div> <b>SIKORA</b>  <b>ARCHITECTURE</b>  <small>489 CORVALLIS COURT  RENO, NEVADA 89511  775 - 852 - 5800  w@sikora-architecture.com  JOB: 11-007</small> </div> </div> </div>	<div> <div>Drawing Title</div> <div> <b>ENLARGED POWER &amp; LIGHTING  NEW WORK PLAN</b> </div> </div> <div> <div>Approved: Project Director</div> <div></div> </div>	<div> <div>Project Title</div> <div> <b>DEMOLITION OF  BUILDINGS:  15A, 15B, F, K, 138</b> </div> </div> <div> <div>Location</div> <div> <b>975 KIRMAN AVE.  RENO, NV 89502</b> </div> </div> <div> <div>Date</div> <div> <b>4-3-17</b> </div> </div> <div> <div>Checked</div> <div> <b>JEG</b> </div> </div> <div> <div>Drawn</div> <div> <b>JGA</b> </div> </div>	<div> <div>Project Number</div> <div> <b>654-16-603</b> </div> </div> <div> <div>Building Number</div> <div> <b>15A, 15B, F, K, 138</b> </div> </div> <div> <div>Drawing Number</div> <div> <b>ES-1.2</b> </div> </div> <div> <div>Dwg. 10 of 10</div> </div>	<div> <div>Office of Construction and Facilities Management:</div> <div>  <div>Department of Veterans Affairs</div> </div> </div>
--	--	---	---	---	---	---	--

0  
three inches = one foot  
0  
one and one half inches = one foot  
0  
one inch = one foot  
0  
three quarters inch = one foot  
0  
one half inch = one foot  
0  
three eighths inch = one foot  
0  
one quarter inch = one foot  
0  
one eighth inch = one foot



A SITE PHOTOMETRIC CALCULATIONS  
ES-2.1 SCALE: 1" = 16'-0"

<div>⚠ Revision #1</div>		4-04-17	CONSULTANTS:		<div><div><div><div><div><div></div><div></div><div></div><div></div><div></div><div></div><div></div><div></div><div></div><div></div><div></div><div></div><div></div><div></div><div></div><div></div><div></div><div></div><div></div><div></div><div></div><div></div><div></div><div></div><div></div><div></div><div></div><div></div><div></div><div></div><div></div><div></div><div></div><div></div><div></div><div></div><div></div><div></div><div></div><div></div><div></div><div></div><div></div><div></div><div></div><div></div><div></div><div></div><div></div><div></div><div></div><div></div><div></div><div></div><div></div><div></div><div></div><div></div><div></div><div></div><div></div><div></div><div></div><div></div><div></div><div></div><div></div><div></div><div></div><div></div><div></div><div></div><div></div><div></div><div></div><div></div><div></div><div></div><div></div><div></div><div></div><div></div><div></div><div></div><div></div><div></div><div></div><div></div><div></div><div></div><div></div><div></div><div></div><div></div><div></div><div></div><div></div><div></div><div></div><div></div><div></div><div></div><div></div><div></div><div></div><div></div><div></div><div></div><div></div><div></div><div></div><div></div><div></div><div></div><div></div><div></div><div></div><div></div><div></div><div></div><div></div><div></div><div></div><div></div><div></div><div></div><div></div><div></div><div></div><div></div><div></div><div></div><div></div><div></div><div></div><div></div><div></div><div></div><div></div><div></div><div></div><div></div><div></div><div></div><div></div><div></div><div></div><div></div><div></div><div></div><div></div><div></div><div></div><div></div><div></div><div></div><div></div><div></div><div></div><div></div><div></div><div></div><div></div><div></div><div></div><div></div><div></div><div></div><div></div><div></div><div></div><div></div><div></div><div></div><div></div><div></div><div></div><div></div><div></div><div></div><div></div><div></div><div></div><div></div><div></div><div></div><div></div><div></div><div></div><div></div><div></div><div></div><div></div><div></div><div></div><div></div><div></div><div></div><div></div><div></div><div></div><div></div><div></div><div></div><div></div><div></div><div></div><div></div><div></div><div></div><div></div><div></div><div></div><div></div><div></div><div></div><div></div><div></div><div></div><div></div><div></div><div></div><div></div><div></div><div></div><div></div><div></div><div></div><div></div><div></div><div></div><div></div><div></div><div></div><div></div><div></div><div></div><div></div><div></div><div></div><div></div><div></div><div></div><div></div><div></div><div></div><div></div><div></div><div></div><div></div><div></div><div></div><div></div><div></div><div></div><div></div><div></div><div></div><div></div><div></div><div></div><div></div><div></div><div></div><div></div><div></div><div></div><div></div><div></div><div></div><div></div><div></div><div></div><div></div><div></div><div></div><div></div><div></div><div></div><div></div><div></div><div></div><div></div><div></div><div></div><div></div><div></div><div></div><div></div><div></div><div></div><div></div><div></div><div></div><div></div><div></div><div></div><div></div><div></div><div></div><div></div><div></div><div></div><div></div><div></div><div></div><div></div><div></div><div></div><div></div><div></div><div></div><div></div><div></div><div></div><div></div><div></div><div></div><div></div><div></div><div></div><div></div><div></div><div></div><div></div><div></div><div></div><div></div><div></div><div></div><div></div><div></div><div></div><div></div><div></div><div></div><div></div><div></div><div></div><div></div><div></div><div></div><div></div><div></div><div></div><div></div><div></div><div></div><div></div><div></div><div></div><div></div><div></div><div></div><div></div><div></div><div></div><div></div><div></div><div></div><div></div><div></div><div></div><div></div><div></div><div></div><div></div><div></div><div></div><div></div><div></div><div></div><div></div><div></div><div></div><div></div><div></div><div></div><div></div><div></div><div></div><div></div><div></div><div></div><div></div><div></div><div></div><div></div><div></div><div></div><div></div><div></div><div></div><div></div><div></div><div></div><div></div><div></div><div></div><div></div><div></div><div></div><div></div><div></div><div></div><div></div><div></div><div></div><div></div><div></div><div></div><div></div><div></div><div></div><div></div><div></div><div></div><div></div><div></div><div></div><div></div><div></div><div></div><div></div><div></div><div></div><div></div><div></div><div></div><div></div><div></div><div></div><div></div><div></div><div></div><div></div><div></div><div></div><div></div><div></div><div></div><div></div><div></div><div></div><div></div><div></div><div></div><div></div><div></div><div></div><div></div><div></div><div></div><div></div><div></div><div></div><div></div><div></div><div></div><div></div><div></div><div></div><div></div><div></div><div></div><div></div><div></div><div></div><div></div><div></div><div></div><div></div><div></div><div></div><div></div><div></div><div></div><div></div><div></div><div></div><div></div><div></div><div></div><div></div><div></div><div></div><div></div><div></div><div></div><div></div><div></div><div></div><div></div><div></div><div></div><div></div><div></div><div></div><div></div><div></div><div></div><div></div><div></div><div></div><div></div><div></div><div></div><div></div><div></div><div></div><div></div><div></div><div></div><div></div><div></div><div></div><div></div><div></div><div></div><div></div><div></div><div></div><div></div><div></div><div></div><div></div><div></div><div></div><div></div><div></div><div></div><div></div><div></div><div></div><div></div><div></div><div></div><div></div><div></div><div></div><div></div><div></div><div></div><div></div><div></div><div></div><div></div><div></div><div></div><div></div><div></div><div></div><div></div><div></div><div></div><div></div><div></div><div></div><div></div><div></div><div></div><div></div><div></div><div></div><div></div><div></div><div></div><div></div><div></div><div></div><div></div><div></div><div></div><div></div><div></div><div></div><div></div><div></div><div></div><div></div><div></div><div></div><div></div><div></div><div></div><div></div><div></div><div></div><div></div><div></div><div></div><div></div><div></div><div></div><div></div><div></div><div></div><div></div><div></div><div></div><div></div><div></div><div></div><div></div><div></div><div></div><div></div><div></div><div></div><div></div><div></div><div></div><div></div><div></div><div></div><div></div><div></div><div></div><div></div><div></div><div></div><div></div><div></div><div></div><div></div><div></div><div></div><div></div><div></div><div></div><div></div><div></div><div></div><div></div><div></div><div></div><div></div><div></div><div></div><div></div><div></div><div></div><div></div><div></div><div></div><div></div><div></div><div></div><div></div><div></div><div></div><div></div><div></div><div></div><div></div><div></div><div></div><div></div><div></div><div></div><div></div><div></div><div></div><div></div><div></div><div></div><div></div><div></div><div></div><div></div><div></div><div></div><div></div><div></div><div></div><div></div><div></div><div></div><div></div><div></div><div></div><div></div><div></div><div></div><div></div><div></div><div></div><div></div><div></div><div></div><div></div><div></div><div></div><div></div><div></div><div></div><div></div><div></div><div></div><div></div><div></div><div></div><div></div><div></div><div></div><div></div><div></div><div></div><div></div><div></div><div></div><div></div><div></div><div></div><div></div><div></div><div></div><div></div><div></div><div></div><div></div><div></div><div></div><div></div><div></div><div></div><div></div><div></div><div></div><div></div><div></div><div></div><div></div><div></div><div></div><div></div><div></div><div></div><div></div><div></div><div></div><div></div><div></div><div></div><div></div><div></div><div></div><div></div><div></div><div></div><div></div><div></div><div></div><div></div><div></div><div></div><div></div><div></div><div></div><div></div><div></div><div></div><div></div><div></div><div></div><div></div><div></div><div></div><div></div><div></div><div></div><div></div><div></div><div></div><div></div><div></div><div></div><div></div><div></div><div></div><div></div><div></div><div></div><div></div><div></div><div></div><div></div><div></div><div></div><div></div><div></div><div></div><div></div><div></div><div></div><div></div><div></div><div></div><div></div><div></div><div></div><div></div><div></div><div></div><div></div><div></div><div></div><div></div><div></div><div></div><div></div><div></div><div></div><div></div><div></div><div></div><div></div><div></div><div></div><div></div><div></div><div></div><div></div><div></div><div></div><div></div><div></div><div></div><div></div><div></div><div></div><div></div><div></div><div></div><div></div><div></div><div></div><div></div><div></div><div></div><div></div><div></div><div></div><div></div><div></div><div></div><div></div><div></div><div></div><div></div><div></div><div></div><div></div><div></div><div></div><div></div><div></div><div></div><div></div><div></div><div></div><div></div><div></div><div></div><div></div><div></div><div></div><div></div><div></div><div></div><div></div><div></div><div></div><div></div><div></div><div></div><div></div><div></div><div></div><div></div><div></div><div></div><div></div><div></div><div></div><div></div><div></div><div></div><div></div><div></div><div></div><div></div><div></div><div></div><div></div><div></div><div></div><div></div><div></div><div></div><div></div><div></div><div></div><div></div><div></div><div></div><div></div><div></div><div></div><div></div><div></div><div></div><div></div><div></div><div></div><div></div><div></div><div></div><div></div><div></div><div></div><div></div><div></div><div></div><div></div><div></div><div></div><div></div><div></div><div></div><div></div><div></div><div></div><div></div><div></div><div></div><div></div><div></div><div></div><div></div><div></div><div></div><div></div><div></div><div></div><div></div><div></div><div></div><div></div><div></div><div></div><div></div><div></div><div></div><div></div><div></div><div></div><div></div><div></div><div></div><div></div><div></div><div></div><div></div><div></div><div></div><div></div><div></div><div></div><div></div><div></div><div></div><div></div><div></div><div></div><div></div><div></div><div></div><div></div><div></div><div></div><div></div><div></div><div></div><div></div><div></div><div></div><div></div><div></div><div></div><div></div><div></div><div></div><div></div><div></div><div></div><div></div><div></div><div></div><div></div><div></div><div></div><div></div><div></div><div></div><div></div><div></div><div></div><div></div><div></div><div></div><div></div><div></div><div></div><div></div><div></div><div></div><div></div><div></div><div></div><div></div><div></div><div></div><div></div><div></div><div></div><div></div><div></div><div></div><div></div><div></div><div></div><div></div><div></div><div></div><div></div><div></div><div></div><div></div><div></div><div></div><div></div><div></div><div></div><div></div><div></div><div></div><div></div><div></div><div></div><div></div><div></div><div></div><div></div><div></div><div></div><div></div><div></div><div></div><div></div><div></div><div></div><div></div><div></div><div></div><div></div><div></div><div></div><div></div><div></div><div></div><div></div><div></div><div></div><div></div><div></div><div></div><div></div><div></div><div></div><div></div><div></div><div></div><div></div><div></div><div></div><div></div><div></div><div></div><div></div><div></div><div></div><div></div><div></div><div></div><div></div><div></div><div></div><div></div><div></div><div></div><div></div><div></div><div></div><div></div><div></div><div></div><div></div><div></div><div></div><div></div><div></div><div></div><div></div><div></div><div></div><div></div><div></div><div></div><div></div><div></div><div></div><div></div><div></div><div></div><div></div><div></div><div></div><div></div><div></div><div></div><div></div><div></div><div></div><div></div><div></div><div></div><div></div><div></div><div></div><div></div><div></div><div></div><div></div><div></div><div></div><div></div><div></div><div></div><div></div><div></div><div></div><div></div><div></div><div></div><div></div><div></div><div></div><div></div><div></div><div></div><div></div><div></div><div></div><div></div><div></div><div></div><div></div><div></div><div></div><div></div><div></div><div></div><div></div><div></div><div></div><div></div><div></div><div></div><div></div><div></div><div></div><div></div><div></div><div></div><div></div><div></div><div></div><div></div><div></div><div></div><div></div><div></div><div></div><div></div><div></div><div></div><div></div><div></div><div></div><div></div><div></div><div></div><div></div><div></div><div></div><div></div><div></div><div></div><div></div><div></div><div></div><div></div><div></div><div></div><div></div><div></div><div></div><div></div><div></div><div></div><div></div><div></div><div></div><div></div><div></div><div></div><div></div><div></div><div></div><div></div><div></div><div></div><div></div><div></div><div></div><div></div><div></div><div></div><div></div><div></div><div></div><div></div><div></div><div></div><div></div><div></div><div></div><div></div><div></div><div></div><div></div><div></div><div></div><div></div><div></div><div></div><div></div><div></div><div></div><div></div><div></div><div></div><div></div><div></div><div></div><div></div><div></div><div></div><div></div><div></div><div></div><div></div><div></div><div></div><div></div><div></div><div></div><div></div><div></div><div></div><div></div><div></div><div></div><div></div><div></div><div></div><div></div><div></div><div></div><div></div><div></div><div></div><div></div><div></div><div></div><div></div><div></div><div></div><div></div><div></div><div></div><div></div><div></div><div></div><div></div><div></div><div></div><div></div><div></div><div></div><div></div><div></div><div></div><div></div><div></div><div></div><div></div><div></div><div></div><div></div><div></div><div></div><div></div><div></div><div></div><div></div><div></div><div></div></div></div></div></div></div>	
--------------------------	--	---------	--------------	--	--	--



0  
three inches = one foot  
6"  
1  
one and one half inches = one foot  
6"  
2  
one inch = one foot  
6"  
three quarters inch = one foot  
6"  
four  
one half inch = one foot  
6"  
five  
three eighths inch = one foot  
6"  
eight  
one quarter inch = one foot  
6"  
nine  
one eighth inch = one foot  
6"

TELECOM ABBREVIATED SCOPE OF WORK

ITEM	DESCRIPTION
1.	THE FIBER AND COPPER DEMARC FOR THE BUILDINGS LOCATED ON THE EAST OF KIRMAN STREET IS LOCATED IN THE BUILDING 15A TELECOM ROOM WHICH IS SCHEDULED TO BE DEMOLISHED AS PART OF THIS PROJECT. THIS TELECOM ROOM IS FED FROM THE MAIN HOSPITAL BLDG 1 LOT SERVER ROOM WITH A 200-PAIR COPPER PHONE CABLE AND A 144-STRAND SINGLEMODE FIBER OPTIC CABLE.
2.	THE BUILDING 15A TELECOM ROOM CURRENTLY FEEDS ALL OF THE BUILDINGS EAST OF KIRMAN STREET INCLUDING THE BUILDING 8 BOILER PLANT, BUILDING 1 CARPENTRY SHOP AND GARAGE EQUIPMENT ROOMS WHICH ARE SCHEDULED TO REMAIN IN SERVICE.
3.	A NEW TELECOM ROOM HAS BEEN CONSTRUCTED IN THE BUILDING 1 CARPENTRY SHOP UNDER A PREVIOUS PROJECT. THIS TELECOM ROOM WILL BECOME THE NEW COPPER AND FIBER OPTIC DEMARC FOR THE BUILDINGS TO REMAIN (BUILDINGS 7, 8 AND PARKING GARAGE) AND WILL FEED ALL FUTURE BUILDINGS TO BE CONSTRUCTED EAST OF KIRMAN ST.
4.	THE CONTRACTOR WILL DISCONNECT THE EXISTING 200-PAIR COPPER CABLE TERMINATED IN THE BUILDING 15A TELECOM ROOM AND WILL PULL BACK THE CABLE TO THE PULL BOX ADJACENT TO THE BUILDING 8 BOILER PLANT. THIS CABLE WILL THEN BE PULLED BACK INTO THE BUILDING 1 TELECOM ROOM AND TERMINATED ON WALL MOUNTED 100-PAIR UL LISTED BUILDING ENTRANCE TERMINALS.
5.	THE CONTRACTOR WILL DISCONNECT THE EXISTING 144-STRAND FIBER OPTIC CABLE TERMINATED IN THE BUILDING 15A TELECOM ROOM AND WILL PULL BACK THE CABLE TO THE PULL BOX ADJACENT TO THE BUILDING 8 BOILER PLANT. THIS CABLE WILL THEN BE PULLED BACK INTO THE BUILDING 1 TELECOM ROOM AND TERMINATED IN A 4RU RACK MOUNTED FIBER TERMINATION CABINET.
6.	THE CONTRACTOR WILL DISCONNECT THE EXISTING 25-PAIR COPPER PHONE CABLE TERMINATED IN THE BUILDING 15A TELECOM ROOM THAT FEEDS THE BUILDING 8 BOILER PLANT TELECOM ROOM. THIS CABLE WILL BE PULLED BACK TO THE PULL BOX ADJACENT TO THE BUILDING 8 BOILER PLANT. THIS CABLE WILL THEN BE PULLED BACK INTO THE BUILDING 1 TELECOM ROOM AND TERMINATED ON WALL MOUNTED UL LISTED BUILDING ENTRANCE TERMINALS.
7.	THE CONTRACTOR WILL DISCONNECT THE EXISTING 24-STRAND SINGLEMODE FIBER OPTIC CABLE TERMINATED IN THE BUILDING 15A TELECOM ROOM THAT FEEDS THE BUILDING 8 BOILER PLANT TELECOM ROOM. THIS CABLE WILL BE PULLED BACK TO THE PULL BOX ADJACENT TO THE BUILDING 8 BOILER PLANT. THIS CABLE WILL THEN BE PULLED BACK INTO THE BUILDING 1 TELECOM ROOM AND TERMINATED IN A 4RU RACK MOUNTED FIBER TERMINATION CABINET.
8.	THE BUILDING 15A TELECOM ROOM TO BE DEMOLISHED SUPPORTS THE GARAGE ELEVATOR PHONE. EXISTING UNDERGROUND CONDUIT HAS BEEN INSTALLED FROM THE BUILDING 1 TELECOM ROOM TO THE OUTSIDE OF THE GARAGE 1ST LEVEL ELEVATOR EQUIPMENT ROOM. NEW CONDUIT AND PULL BOXES WILL BE INSTALLED FROM THIS POINT TO THE ELEVATOR MACHINE ROOM. A NEW OSP RATED CAT 6 PHONE CABLE WILL BE INSTALLED FROM THE ELEVATOR MACHINE ROOM TO THE EXISTING BUILDING 1 TELECOM ROOM AND CROSS-CONNECTED TO SUPPORT THE ELEVATOR PHONE. THE CAT 6 CABLE WILL BE TERMINATED ON WALL MOUNTED CAT 6 ENTRANCE PROTECTION TERMINALS IN THE BUILDING 1 TELECOM ROOM.
9.	THE BUILDING 15A TELECOM ROOM TO BE DEMOLISHED SUPPORTS THE GARAGE CCTV CAMERAS. THE EXISTING CCTV NETWORK VIDEO RECORDER (NVR) WILL BE RELOCATED FROM THE BUILDING 15A TELECOM ROOM TO THE EXISTING BUILDING 1 TELECOM ROOM. EXISTING UNDERGROUND CONDUIT HAS BEEN INSTALLED FROM THE BUILDING 1 TELECOM ROOM TO THE OUTSIDE OF THE GARAGE 1ST LEVEL ELEVATOR EQUIPMENT ROOM. NEW CONDUIT AND PULL BOXES WILL BE INSTALLED FROM THIS POINT TO THE GARAGE 2ND LEVEL EQUIPMENT ROOM LOCATED DIRECTLY ABOVE THE 1ST LEVEL ELEVATOR MACHINE ROOM. QTY (6) RG-59 OSP RATED CCTV CABLES WILL BE INSTALLED FROM THE GARAGE 2ND LEVEL EQUIPMENT ROOM CCTV TERMINATION CABINET TO THE EXISTING BUILDING 1 TELECOM ROOM. RG-59 CABLES WILL BE TERMINATED AT THE BLDG 1 TELECOM ROOM ON WALL MOUNTED PROTECTION TERMINALS. THE CABLES WILL BE RECONNECTED TO THE RELOCATED CCTV NETWORK VIDEO RECORDER.
10.	RELOCATE EXISTING BLDG 15 CODE BLUE PAGING SYSTEM CABINET TO THE BLDG 1 ELECTRICAL ROOM. DISCONNECT AND PULL BACK FIBER CABLE FEEDING THIS CABINET TO PULL BOX ADJACENT TO BLDG 8. RE-PULL FIBER CABLE TO PAGING SYSTEM CABINET IN EXISTING CONDUIT. DISCONNECT AND PULL BACK BLDG 8 SPEAKER CABLING FEEDING CABINET TO PULL BOX ADJACENT TO BLDG 8. RE-PULL SPEAKER CABLE TO PAGING SYSTEM CABINET IN EXISTING CONDUIT. RE-TERMINATE, RE-LABEL AND RE-TEST CABLING.
11.	ALL EXISTING CABLING THAT IS PULLED BACK AND RE-PULLED INTO THE BUILDING 1 TELECOM ROOM AND ALL NEW CABLING SHALL BE INSTALLED IN NEW DETECTABLE 3" 3-CELL MAXWELL FABRIC INNERDUCT.
12.	THE CONTRACTOR SHALL REMOVE EXISTING FIBER OPTIC TERMINATION CABINETS AND COPPER ENTRANCE TERMINALS LOCATED IN THE EXISTING TELECOM ROOMS TO BE DEMOLISHED AND WILL TURN THIS EQUIPMENT OVER TO VA.
13.	THE CONTRACTOR WILL TEST ALL RE-TERMINATED FIBER OPTIC AND COPPER CABLES. THE CONTRACTOR WILL LABEL ALL RE-TERMINATED CABLES.
14.	ALL OTHER FIBER OPTIC CABLE AND COPPER PHONE CABLE WILL BE DEMOLISHED (UCN).

TELECOM GENERAL NOTES

ITEM	DESCRIPTION
27.1	<b>PROJECT PHASING:</b> THE CONTRACTOR SHALL COORDINATE THE PHASING OF THE WORK SO THAT THE EXISTING TELECOMMUNICATION SYSTEMS INCLUDING VOICE, DATA, PAGING AND SECURITY REMAIN IN SERVICE WITHOUT INTERRUPTION IN THE OPERATIONAL BUILDINGS ON THE EAST SIDE OF KIRMAN STREET. ALL SERVICE OUTAGES MUST BE SCHEDULED WITH AND APPROVED BY THE VA.
27.2	<b>STANDARDS AND CODES:</b> ALL TELECOMMUNICATIONS (TELECOM) WORK SHALL BE INSTALLED IN ACCORDANCE WITH THE NATIONAL ELECTRIC CODE (NEC) AND ANSI/TIA/EIA STANDARDS REFERENCED IN THE DIVISION 27 SPECIFICATIONS.
27.3	<b>GENERAL REQUIREMENTS:</b> INCLUDE ALL LABOR, MATERIALS, EQUIPMENT, TOOLS, TRANSPORTATION, STORAGE COSTS, EXCAVATION, TRAINING, INSURANCE, TEMPORARY PROTECTION, PERMITS, INSPECTIONS, TAXES AND ALL NECESSARY AND RELATED ITEMS REQUIRED TO PROVIDE A COMPLETE AND OPERATIONAL TELECOM SYSTEM AS SHOWN ON THE CONTRACT DRAWINGS AND DESCRIBED IN THE SPECIFICATIONS.
	INFORMATION SHOWN ON THE TELECOM DRAWINGS IS DIAGRAMMATIC. FIELD VERIFY ALL DIMENSIONS, LOCATIONS, AND LAYOUT. REVIEW ALL ARCHITECTURAL, STRUCTURAL, CIVIL, MECHANICAL, AND SPECIALTY SYSTEMS DRAWINGS AND ADJUST ALL WORK TO MEET THE REQUIREMENTS OR CONDITIONS SHOWN THEREON. DO NOT SCALE THE TELECOM PLANS FOR RACEWAY, OUTLET, RACK OR EQUIPMENT LOCATIONS.
27.4	<b>GROUNDING AND BONDING:</b> BUILDING ENTRANCE TERMINALS AND BACKBONE COPPER CABLE SHIELDS SHALL BE BONDED AND GROUNDED IN ACCORDANCE WITH ANSI-J-STD-607-B.
	THE DIVISION 27 TELECOM CONTRACTOR IS RESPONSIBLE FOR LABELING ALL OF THE GROUNDING RELATED ITEMS SHOWN ON THE TELECOM DRAWINGS OR DESCRIBED IN THE DIVISION 27 SPECIFICATIONS.
27.5	<b>OPEN EQUIPMENT RACKS AND ENCLOSED CABINETS:</b> ALL TELECOM EQUIPMENT RACKS AND CABINETS ARE EXISTING. THE CONTRACTOR SHALL MOUNT FIBER OPTIC TERMINATION CABINETS IN EXISTING RACKS.
	TELECOM CABLING AND TERMINATIONS: NO SPLICES WILL BE PERMITTED IN ANY TELECOM CABLING UNLESS EXPLICITLY SHOWN ON THE DRAWINGS.
	PROVIDE SLACK IN CABLES AT ENTRANCES AND EXITS OF CONDUIT SLEEVES AND AT PULL BOXES.
	PROVIDE A MINIMUM 20'-0" MAINTENANCE LOOP IN THE TELECOM ROOMS FOR ALL FIBER AND COPPER CABLES. MAINTENANCE LOOPS SHALL BE INSTALLED IN WALL MOUNTED RE-CLOSEABLE STORAGE RINGS WITH VELCRO CABLE TIES.
27.6	<b>TESTING AND CERTIFICATION:</b> ALL FIBER AND COPPER CABLING SHALL BE TESTED AND CERTIFIED IN ACCORDANCE WITH THE DIVISION 27 SPECIFICATIONS. CERTIFIED TEST REPORTS SHALL BE SUBMITTED FOR APPROVAL AT THE COMPLETION OF THE PROJECT.
27.7	<b>SUPERVISION:</b> ALL WORK SHALL BE SUPERVISED ON A DAILY BASIS BY A BICSI CERTIFIED SUPERVISOR HAVING A MINIMUM OF THREE (3) YEARS EXPERIENCE IN THE INSTALLATION OF STRUCTURED CABLING AND TELECOMMUNICATION SYSTEMS.
27.8	<b>EXAMINATION OF SITE:</b> BEFORE SUBMITTING A PROPOSAL, THE CONTRACTOR SHALL EXAMINE THE SITE AND BECOME FAMILIAR WITH THE EXISTING CONDITIONS AND LIMITATIONS. NO EXTRAS WILL BE ALLOWED BECAUSE OF THE CONTRACTOR'S MISUNDERSTANDING OF THE AMOUNT OF WORK INVOLVED OR LACK OF KNOWLEDGE OF ANY SITE CONDITIONS WHICH MAY AFFECT THE WORK. ANY APPARENT VARIANCE OF THE DRAWINGS OR SPECIFICATIONS FROM THE EXISTING CONDITIONS AT THE SITE SHALL BE CALLED TO THE ATTENTION OF THE ENGINEER BEFORE SUBMITTING A PROPOSAL.
27.9	<b>GUARANTEE:</b> THE COMPLETE TELECOM SYSTEM AND ALL PORTIONS THEREOF, SHALL BE GUARANTEED TO BE FREE FROM DEFECTS IN WORKMANSHIP AND MATERIALS FOR A MINIMUM PERIOD OF ONE (1) YEAR FROM DATE OF FINAL ACCEPTANCE. PROMPTLY REMEDY SUCH DEFECTS AND ANY SUBSEQUENT DAMAGE CAUSED BY THE DEFECTS OR REPAIR THEREOF AT NO EXPENSE TO THE OWNER. SEE THE DIVISION 27 SPECS FOR ADDITIONAL WARRANTY AND/OR EXTENDED WARRANTY REQUIREMENTS.
27.10	<b>SUBSTANTIAL COMPLETION:</b> THE FOLLOWING ARE PREREQUISITES FOR SUBSTANTIAL COMPLETION OF THE TELECOM SYSTEM: ALL WORK COMPLETED IN ACCORDANCE WITH THE CONTRACT DOCUMENTS; PUNCH LIST ITEMS COMPLETED AND SIGNED OFF; CERTIFIED CABLE TEST REPORTS SUBMITTED AND APPROVED; AS-BUILT DRAGGS AND TERMINATION SCHEDULES SUBMITTED AND APPROVED; MANUFACTURER'S WARRANTY AND CONTRACTOR'S GUARANTEE SUBMITTED; EXTRA STOCK ITEMS TURNED OVER TO THE OWNER.

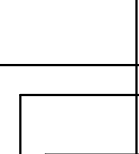
TELECOM LEGEND

	DATA OUTLET: 45 BOX WITH SINGLE GANG MUD RING UCN, +18" AFF UCN. INSTALL 1" CONDUIT TO TELECOM ROOM "MDF" UCN (SEE A-7/T-TO-2). SEE DRAWINGS FOR QTY OF CAT 6 DROPS AT EACH OUTLET.	AFF	ABOVE FINISH FLOOR
	WALL PHONE OUTLET: 45 BOX WITH SINGLE GANG MUD RING UCN, +44" AFF UCN. INSTALL 1" CONDUIT TO TELECOM ROOM "MDF" UCN (SEE A-7/T-TO-2). SEE DRAWINGS FOR QTY OF CAT 6 DROPS AT EACH OUTLET. PROVIDE 2-POST SINGLE GANG STAINLESS STEEL WALL PLATE FOR MOUNTING OF PHONE.	AV	AUDIO / VISUAL
	DATA OUTLET FOR WIRELESS ACCESS POINT. SURFACE MOUNTED SIDE ENTRY BOX. SEE DRAWINGS FOR MOUNTING. SEE DRAWINGS FOR QTY OF CAT 6 DROPS AT EACH OUTLET.	ANG	AMERICAN WIRE GAUGE
	QUANTITY OF CAT 6 DATA DROPS AT EACH TELECOM OUTLET WHERE 'X' DENOTES QTY OF DROPS (EXAMPLE: 4D = 4 DATA DROPS).	BDF	BUILDING DISTRIBUTION FRAME
	IP VIDEO SURVEILLANCE CAMERA WITH CAT 6 NETWORK DROP. SEE IP VIDEO SURVEILLANCE CAMERA SCHEDULE ON A-7/T-2 FOR CAMERA TYPE, MOUNTING, POWER REQUIREMENTS, ETC. # IDENTIFIES THE CAMERA NO. IN THE CAMERA SCHEDULE.	CATV	CABLE TV
	FLUSH WALL MOUNTED DEVICES AT 18" AFF UCN	COAX	COAXIAL CABLE
	DEVICES MOUNTED IN OR ABOVE COUNTER/BACKSPLASH. MAXIMUM HEIGHT ON WALLS SHALL BE +48" TO TOP UCN	DEMARC	DEMARCATION POINT
	FLUSH FLOOR MOUNTED DEVICES	DIA	DIAMETER
	FLUSH FLOOR MOUNTED DEVICES IN SINGLE MULTI-COMPARTMENT BOX	FBO	FURNISHED BY OTHERS
	CONDUIT. SIZE AS INDICATED ON DRAWINGS	(E)	EXISTING
	CONDUIT UNDERGROUND OR IN SLAB	EA	EACH
	CONDUIT STUB OUT WITH BUSHING.	EIA	ELECTRONICS INDUSTRIES ALLIANCE
	HORIZONTAL OR VERTICAL SLEEVE WITH BUSHINGS.	EMT	ELECTRICAL METALLIC TUBING
	CONDUIT UP OR DOWN.	EQ	EQUAL
	J-HOOKS (WHERE SPECIFIC ROUTING REQUIRED)	FBO	FURNISHED BY OTHERS
	LADDER RACK. SIZE INDICATED ON DRAGGS.	PDF	FIBER DISTRIBUTION FRAME
	WIRE BASKET TRAY. SIZE INDICATED ON DRAWGS.	END	GROUND
	VERTICAL LADDER RACK.	HC	HORIZONTAL CROSS-CONNECT
	CONDUIT OR SLEEVE STUB UP.	IC	INTERMEDIATE CROSS-CONNECT
	TELECOM EQUIP RACK VERTICAL CABLE MANAGERS. RACK, WIRING BLOCK OR EQUIPMENT GROUND.	ID	INSIDE DIAMETER
	TELECOMMUNICATIONS BONDING BACKBONE CONDUCTOR.	IDC	INSULATION DISPLACEMENT CONNECTOR
	4" X 20" X 1/4" TELECOM GROUNDING BUSBAR (UCN)	IDF	INTERMEDIATE DISTRIBUTION FRAME
	4" X 20" X 1/4" TELECOM MAIN GROUNDING BUSBAR (UCN)	LAN	LOCAL AREA NETWORK
	COPPER BACKBONE CABLING. PAIR COUNT AS INDICATED ON DRAWINGS.	LEG	LOCAL EXCHANGE CARRIER
	SINGLE MODE FIBER OPTIC BACKBONE CABLING. STRAND COUNT AS INDICATED ON DRAWINGS.	MC	MAIN CROSS-CONNECT
	MULTI MODE FIBER OPTIC BACKBONE CABLING. STRAND COUNT AS INDICATED ON DRAWINGS.	MDF	MAIN DISTRIBUTION FRAME
	OUTSIDE PLANT UNDERGROUND TELECOM CONDUIT. SEE SITE DRAWINGS.	MM	MULTIMODE FIBER OPTIC CABLE
		NTS	NOT TO SCALE
		OC	ON CENTER
		OD	OUTSIDE DIAMETER
		OFE	OWNER FURNISHED EQUIPMENT
		OSP	OUTSIDE PLANT
		PBX	PRIVATE BRANCH EXCHANGE / TELEPHONE SWITCH
		PVC	POLYVINYLCHLORIDE
		SM	SINGLEMODE FIBER OPTIC CABLE
		TBB	TELECOMMUNICATIONS BONDING BACKBONE
		TR	TELECOMMUNICATIONS ROOM
		TGB	TELECOMMUNICATIONS GROUNDING BUSBAR
		TIA	TELECOMMUNICATIONS INDUSTRY ASSOCIATION
		TMSB	TELECOMMUNICATIONS MAIN GROUNDING BUSBAR
		TYP	TYPICAL
		UCN	UNLESS OTHERWISE NOTED
		UPS	UNINTERRUPTIBLE POWER SUPPLY
		UTP	UNSHIELDED TWISTED PAIR

TELECOM LABELING

<b>BACKBONE CABLE LABEL (LABEL BOTH ENDS)</b>	
TRB - TRB - #PAIRS - TYPE	U - UNSHIELDED TWISTED PAIR MM - MULTIMODE FIBER OPTIC SM - SINGLEMODE FIBER OPTIC PAIR OR STRAND COUNT (1 - 600) DESTINATION TELECOM ROOM (150, 251, ETC) ORIGINATING TELECOM ROOM (MDF) EXAMPLE: 200-PR FROM MDF TO TR 150 = "MDF-150-200PR-U"
<b>BACKBONE FIBER PATCH PANEL JACK / I/O WIRING BLOCK POSITION LABEL</b>	
TRB - PPP - JACK# OR POSITION#	PATCH PANEL JACK OR I/O BLOCK POSITION (1-48) PATCH PANEL OR TERMINATION BLOCK NUMBER (A-Z). TERMINATING TELECOM ROOM AT OPPOSITE END. EXAMPLE: IDF 150, PATCH PANEL 1, PORT 2 = "150-1-2"

DRAWING SCHEDULE

		<b>NAMING CONVENTION</b> E=ELECTRICAL, T=TELECOM D=DEMOLITION, S=SITE, P=POWER, L=LIGHTING, I=INSTRUMENTATION, Y=AUXILIARY SYSTEMS O=GENERAL DETAILS, SCHEDULES & DIAGRAMS, I=PLANS DRAWING ORDER	100% DESIGN 16 JANUARY 2017
D 1 2			
SHEET	DESCRIPTION		
TD-01	TELECOM GENERAL NOTES, LEGEND & DRAWING SCHEDULE	●	
TD-02	TELECOM DEMOLITION & NEW ONLINE DIAGRAMS	●	
TD-03	ENLARGED BUILDING 1 TELECOM ROOM	●	
TD-11	OVERALL TELECOM SITE PLAN	●	
TOTAL SHEETS IN ISSUE:		4	

Revision #1	4-04-17

CONSULTANTS:

**PK Electrical, Inc.**  
*Engineering · Design · Consulting*  
681 Sierra Rose Dr, Ste B | Reno, NV 89511 | 775.826.9010  
5105 DTC Pkwy, Ste 420 | Greenwood Village, CO 80131 | 720.481.3290  
pk electrical.com © 2008-2015 PK Electrical, Inc. 16040



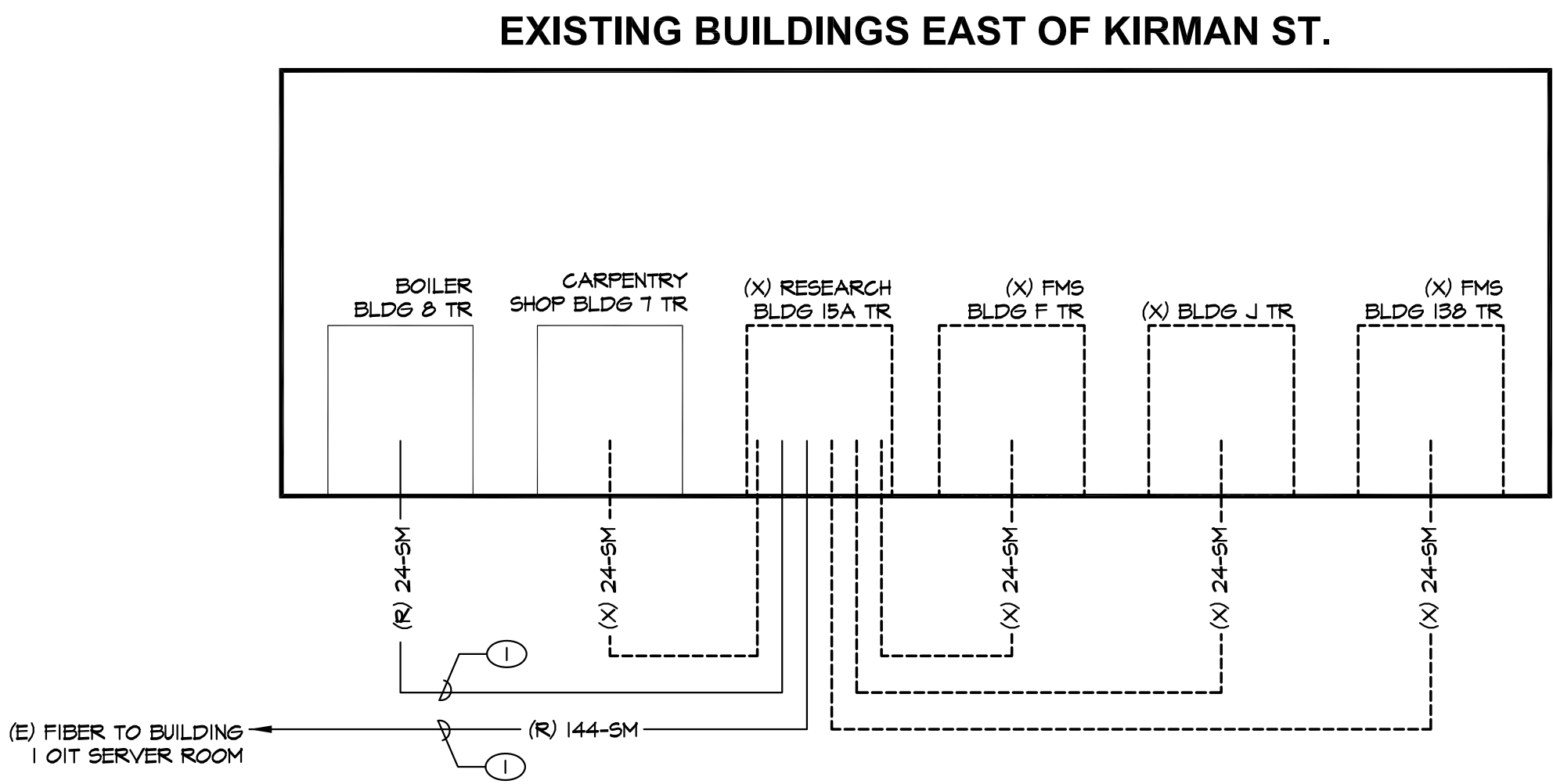
ARCHITECT/ENGINEERS:

**SIKORA**  
**ARCHITECTURE**  
488 CORVALLIS COURT  
RENO, NEVADA 89511  
775 - 852 - 5800  
eric@sikora-architecture.com  
JOB: 11-007

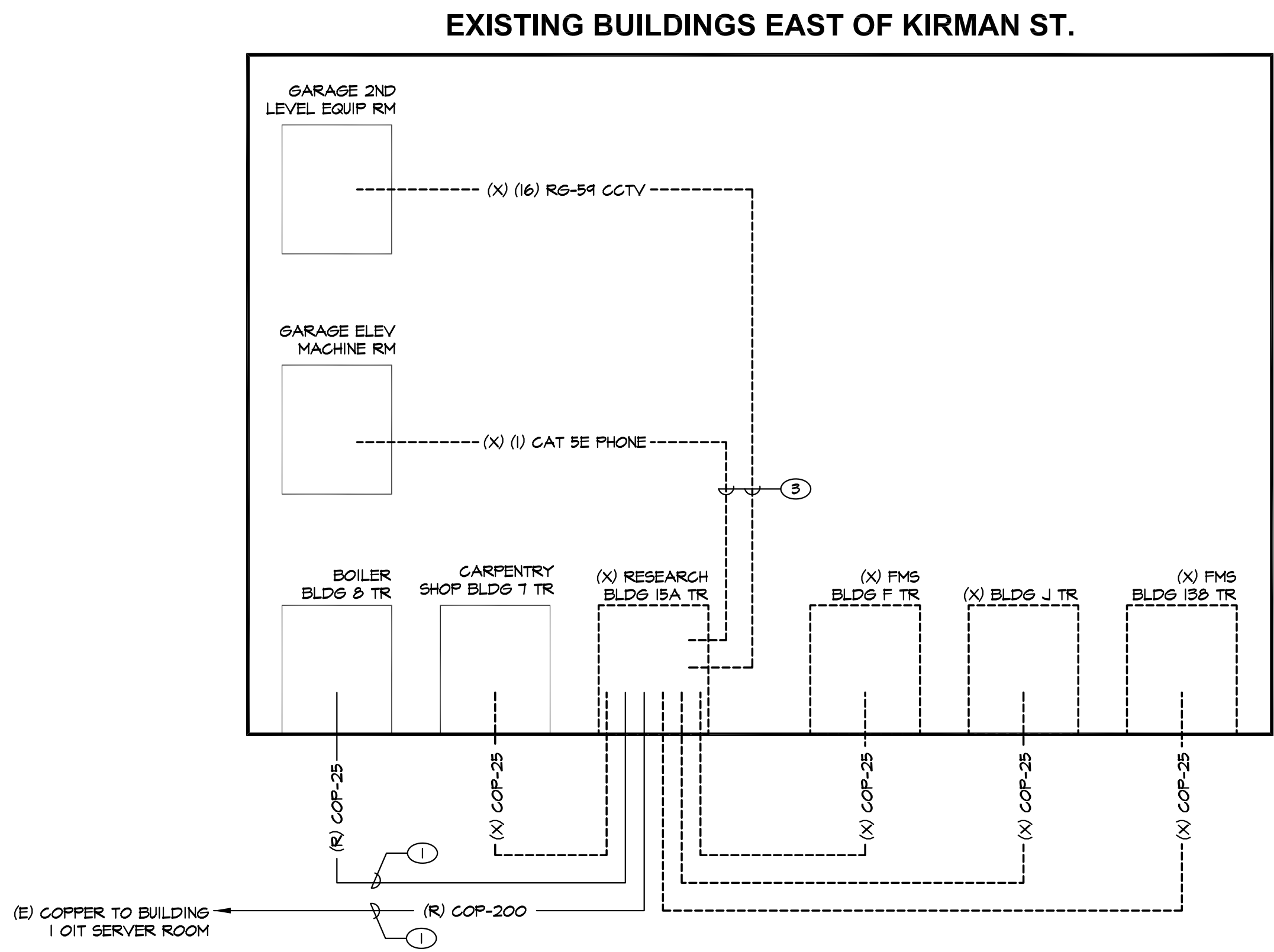
Drawing Title <b>TELECOM GENERAL NOTES, LEGEND &amp; DRAWING SCHEDULE</b>		Project Title <b>DEMOLITION OF BUILDINGS: 15A, 15B, F, K, 138</b>		Project Number <b>654-16-603</b>		Office of Construction and Facilities Management: 
Approved: Project Director		Location 975 KIRMAN AVE. RENO, NV 89502		Building Number 15A, 15B, F, K, 138		
		Date 4-3-17		Drawing Number <b>TD-0.1</b>		
		Checked JEG		Drawn JGA		
				Dwg. 1 of 10		



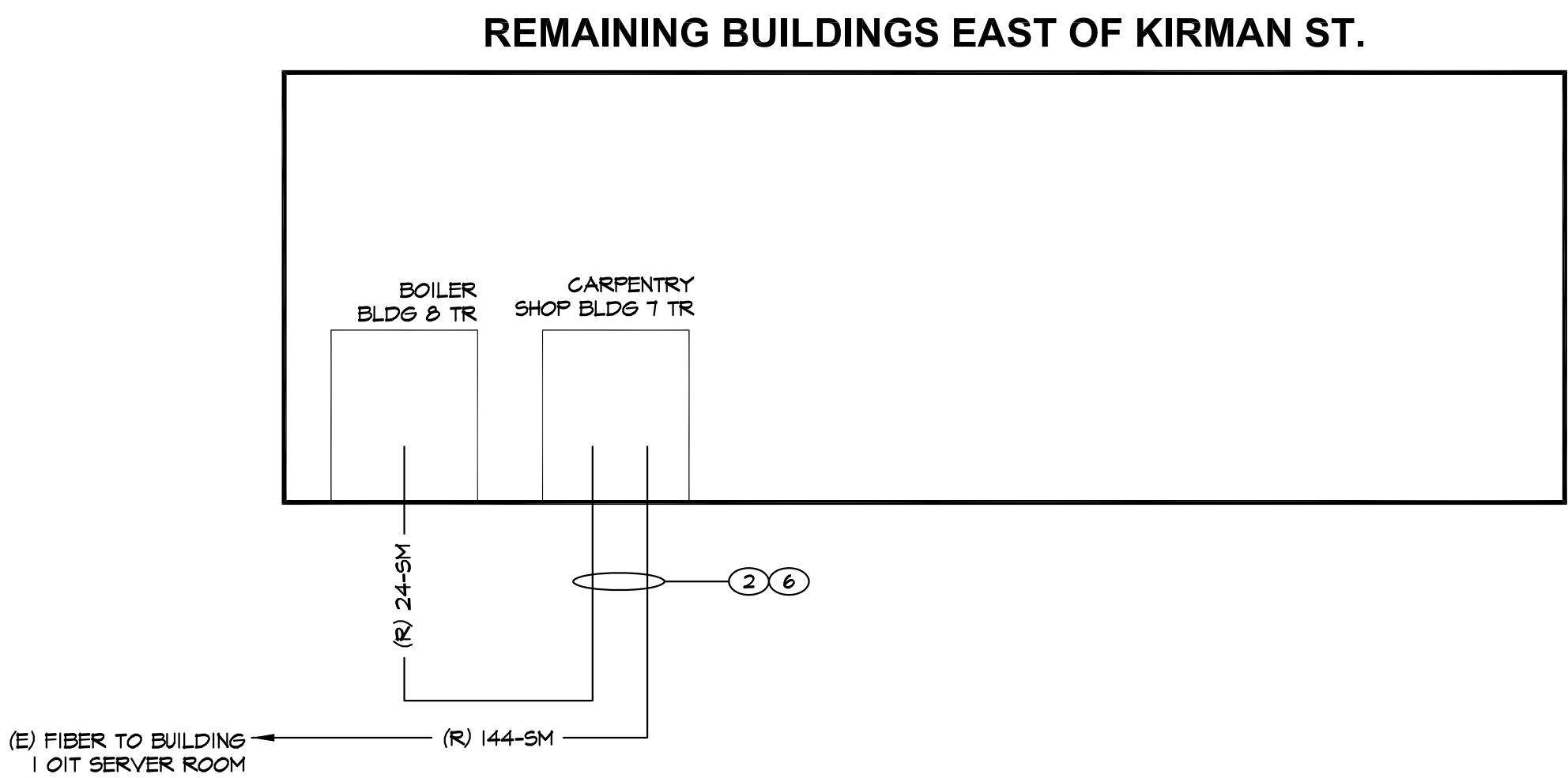
0  
three inches = one foot  
1  
0  
one and one half inches = one foot  
6"  
2  
0  
one inch = one foot  
6"  
2  
0  
three quarters inch = one foot  
6"  
4  
0  
one half inch = one foot  
6"  
4  
0  
three eighths inch = one foot  
6"  
8  
0  
one quarter inch = one foot  
6"  
4  
0  
one eighth inch = one foot  
6"  
16



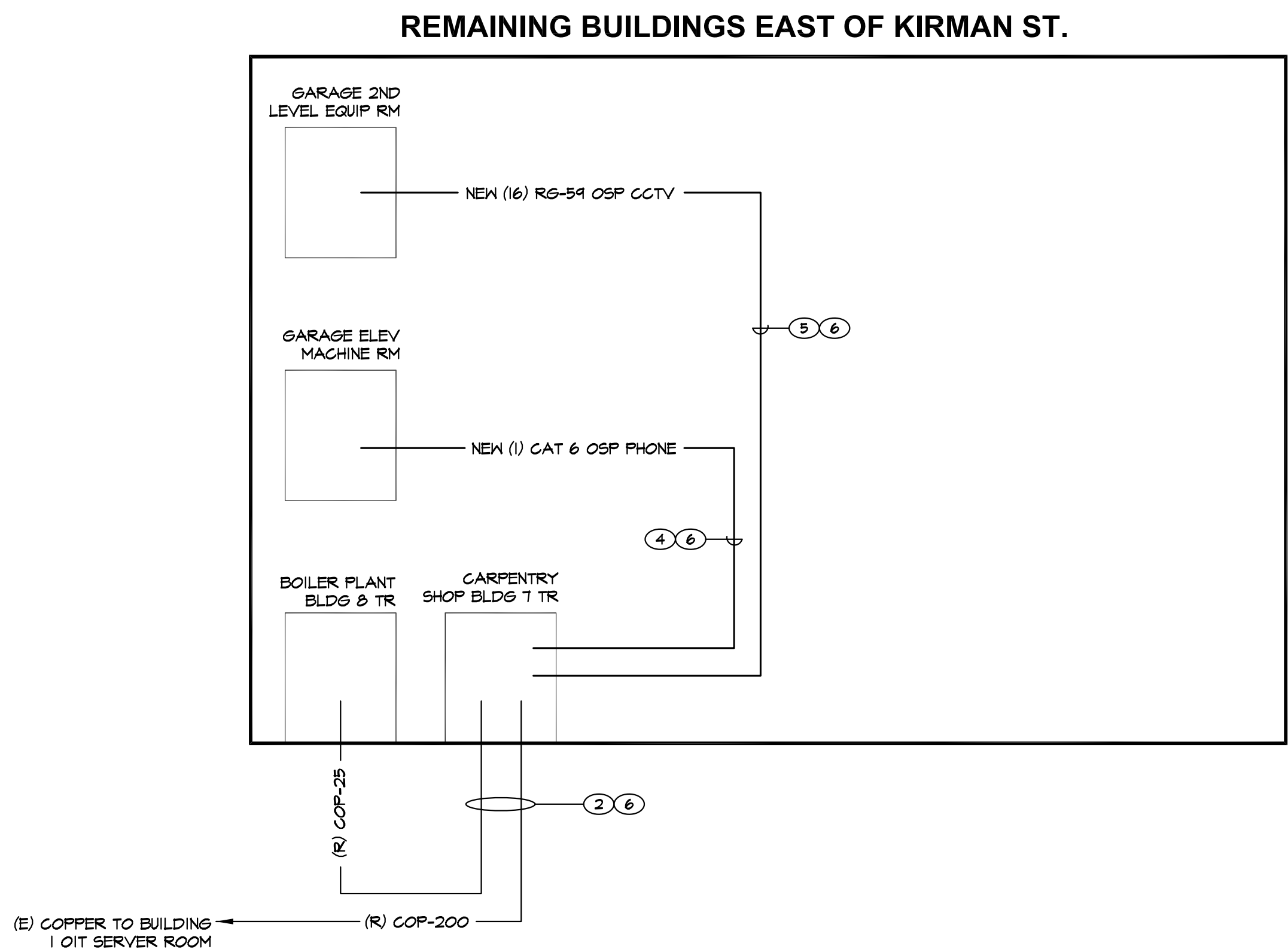
FIBER OPTIC BACKBONE CABLE  
DEMOLITION ONELINE DIAGRAM  
A  
TD-0.2  
SCALE: NONE



COPPER CABLE DEMOLITION  
ONELINE DIAGRAM  
B  
TD-0.2  
SCALE: NONE



FIBER OPTIC CABLE  
ONELINE DIAGRAM  
C  
TD-0.2  
SCALE: NONE



COPPER CABLE  
ONELINE DIAGRAM  
D  
TD-0.2  
SCALE: NONE

#### GENERAL NOTES

- (X) AND/OR DASHED LINES INDICATE EXISTING EQUIPMENT/CABLING TO BE REMOVED, (E) AND/OR SOLID LINES INDICATE EXISTING EQUIPMENT/CABLING TO REMAIN AND (R) AND/OR SOLID LINES INDICATE EXISTING EQUIPMENT/CABLING TO BE RELOCATED UNLESS NOTED OTHERWISE.
- SALVAGEABLE ITEMS REMOVED DURING DEMOLITION SHALL BE OFFERED TO OWNER PRIOR TO DISPOSAL OR REMOVAL FROM SITE.
- EXISTING TELECOM CABLES AS INDICATED ARE BASED ON CASUAL FIELD OBSERVATION AND INFORMATION PER RECORD DRAWINGS AND SHALL BE FIELD VERIFIED BY THE TELECOM CONTRACTOR PRIOR TO START OF DEMOLITION WORK.
- THE CONTRACTOR SHALL SALVAGE AND REUSE EXISTING BOXES AND CONDUIT WHERE POSSIBLE. DAMAGED CONDUIT, FITTINGS BOXES, ETC. MAY NOT BE RE-USED.
- THE CONTRACTOR SHALL REMOVE FROM THE JOB SITE ALL DISCARDED AND ABANDONED MATERIALS LEFT OVER FROM DEMOLITION AND INSTALLATION. THIS INCLUDES, BUT IS NOT LIMITED TO, CONDUIT, FASTENERS AND BOXES, MATERIALS EMBEDDED IN GRADE AND / OR CONCRETE MAY BE ABANDONED IN PLACE. ALL ABANDONED CONDUIT SHALL BE CAPPED.
- SCHEDULE ALL NETWORK AND PHONE SERVICE OUTAGES WITH VA IT STAFF.

#### SHEET NOTES

- EXISTING BACKBONE FIBER AND COPPER CABLES TERMINATED IN EXISTING BLDG 15 TELECOM ROOM. DISCONNECT AND PULL BACK CABLES TO EXISTING MANHOLE SOUTH OF THE BUILDING 8 BOILER PLANT.
- PULL CABLES FROM EXISTING MANHOLE SOUTH OF BLDG 8 BOILER PLANT TO EXISTING BUILDING 1 TELECOM ROOM (CABLES TO BE PULLED IN NEW MAXCELL FABRIC INNERDUCT). RE-TERMINATE AND RE-TEST FIBER AND COPPER BACKBONE CABLES IN EXISTING BUILDING 1 TELECOM ROOM. SEE ENLARGED BUILDING 1 TELECOM ROOM PLANS ON TD-0.3 FOR BACKBONE FIBER AND COPPER CABLE TERMINATION EQUIPMENT AND REQUIREMENTS.
- DEMO ELEVATOR PHONE AND CCTV CABLING FROM THE BUILDING 15A TELECOM ROOM TO THE GARAGE EQUIPMENT ROOMS (SEE TELECOM SITE PLAN TD-1.1).
- INSTALL OSP RATED CAT 6 CABLE (BERKTEK LANMARK-6 OSP, BELDEN OSP6U OR APPROVED EQUAL) FROM ELEVATOR PHONE CONNECTION LOCATION IN ELEVATOR MACHINE ROOM TO BUILDING 1 TELECOM ROOM (SEE SITE PLAN TD-1.1). TERMINATE CABLE AT BUILDING 1 TELECOM ROOM ON WALL MOUNTED ENTRANCE PROTECTION TERMINALS (T1/PORTA SYSTEMS P/N 606 OR APPROVED EQUAL). CROSS CONNECT TO EXISTING WALL MOUNTED 10 PHONE TERMINATION BLOCKS IN TELECOM ROOM. COORDINATE PHONE CROSS CONNECT WITH VA IT STAFF.
- INSTALL QTY (16) OSP RATED RG-59 CCTV CABLES (BELDEN P/N 5434XS OR APPROVED EQUAL) FROM EXISTING GARAGE 2ND LEVEL CCTV TERMINATION CABINET TO THE BUILDING 1 TELECOM ROOM (SEE SITE PLAN TD-1.1). CONNECT CABLES TO EXISTING BNC COUPLERS IN EXISTING GARAGE CCTV TERMINATION CABINET. TERMINATE CABLES AT THE BUILDING 1 TELECOM ROOM ON WALL MOUNTED 4-PORT RG-59 PROTECTION BLOCKS AND CONNECT TO RELOCATED CCTV NVR EQUIPMENT. LABEL CABLES AT EACH END TO MATCH EXISTING CAMERA NUMBERING.
- ALL CABLES TO BE PULLED IN NEW MAXCELL 3" 3-CELL DETECTABLE FABRIC INNERDUCTS. SEE SITE PLAN TD-1.1 FOR QTY OF INNERDUCTS TO BE INSTALLED IN EACH CONDUIT.

#### BID SET

Revision #1	4-04-17	CONSULTANTS:	ARCHITECT/ENGINEERS:	Drawing Title	Project Title	Project Number	Office of Construction and Facilities Management:
		PK Electrical, Inc. Engineering · Design · Consulting 681 Sierra Rose Dr, Ste B   Reno, NV 89511   775.826.9010 5105 DTC Pkwy, Ste 420   Greenwood Village, CO 80131   720.481.3290 pk electrical.com © 2008-2015 PK Electrical, Inc. 10040	SIKORA ARCHITECTURE 488 CORVALLIS COURT RENO, NEVADA 89511 775-852-5800 eric@sikora-architecture.com JOB: 11-007	TELECOM DEMOLITION AND NEW ONELINE DIAGRAMS	DEMOLITION OF BUILDINGS: 15A, 15B, F, K, 138	654-16-603 Building Number 15A, 15B, F, K, 138	Office of Construction and Facilities Management:
				Approved: Project Director	Location	Drawing Number	Department of Veterans Affairs
					975 KIRMAN AVE. RENO, NV 89502	TD-0.2 Dwg. 2 of 10	
					Date	Checked	
					4-3-17	JEG	
						Drawn	
						JGA	







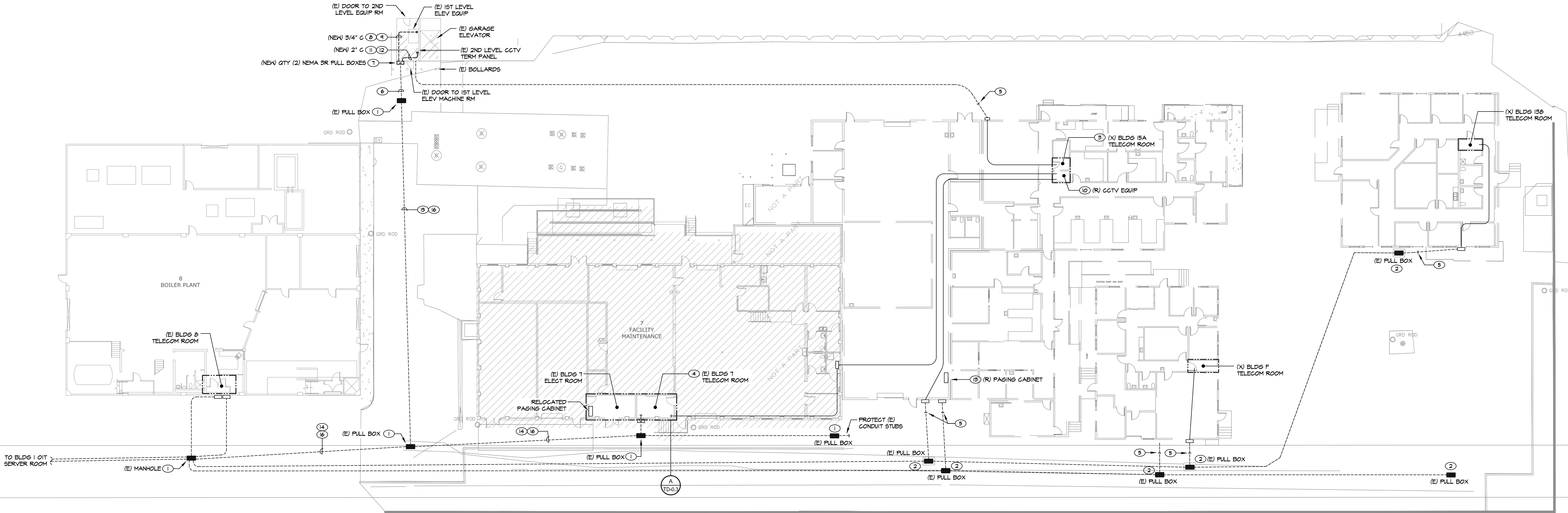
0  
three inches = one foot  
0  
one and one half inches = one foot  
0  
one inch = one foot  
0  
three quarters inch = one foot  
0  
one half inch = one foot  
0  
three eighths inch = one foot  
0  
one quarter inch = one foot  
0  
one eighth inch = one foot

GENERAL NOTES



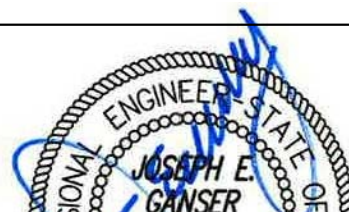

- (X) AND/OR DASHED LINES INDICATE EQUIPMENT TO BE REMOVED. (E) AND/OR SOLID LINES INDICATED EXISTING EQUIPMENT TO REMAIN UNLESS NOTED OTHERWISE.
- COORDINATE CONDUIT ROUTING WITH EXISTING UNDERGROUND UTILITIES. REROUTE CONDUIT AS NECESSARY TO AVOID AND TO PROVIDE NECESSARY CLEARANCES FROM EXISTING UTILITIES. UNDERGROUND UTILITY CLEARANCES SHALL BE PER SFGCO STANDARDS. SEE 6/T-T-0.2 FOR ADDITIONAL REQUIREMENTS.
- SAWCUT ASPHALT AND CONCRETE PAVEMENT SECTIONS PRIOR TO EXCAVATION IN ROADWAYS AND DRIVEWAYS. REPLACE ROADWAY BASE, ASPHALT AND CONCRETE, ROAD BASE, ASPHALT AND CONCRETE THICKNESS TO MATCH EXISTING.
- SAWCUT, REMOVE AND REPLACE WALKWAYS, SIDEWALKS AND GUTTERS WHERE DAMAGED BY OR REQUIRED FOR EXCAVATION. REPLACE WALKWAYS AND SIDEWALKS TO MATCH EXISTING.
- ALL PENETRATIONS THROUGH THE BUILDING STRUCTURE SHALL BE MADE WATER TIGHT.

SHEET NOTES

- EXISTING TELECOM VAULT/FULL BOX TO REMAIN. PROTECT EXISTING TELECOM VAULT/FULL BOX, LID, ASSOCIATED UNDERGROUND CONDUIT AND TELECOM CABLING.
- EXISTING TELECOM FULL BOX AND ASSOCIATED CONDUIT TO REMAIN. DEMO TELECOM CABLING SHOWN ON ONE-LINE DIAGRAMS A/B/TD-0.2.
- BUILDING 15A TELECOM IS THE DEMARK FOR ALL EXISTING TELECOM CABLING LOCATED ON THE EAST SIDE OF KIRMAN STREET. SEE ONE-LINE DIAGRAMS ON TD-0.2 FOR TELECOM CABLE TO BE PROTECTED, PULLED BACK AND RE-TERMINATED IN THE BUILDING 1 TELECOM ROOM.
- SEE A/B/TD-0.3 FOR ENLARGED BLDG 1 TELECOM ROOM PLANS.
- CAP AND MARK EXISTING TELECOM CONDUITS 5'-0" FROM EDGE OF BUILDING.
- EXISTING (1) 4" UNDERGROUND CONDUIT FROM EXISTING PULL BOX TO STUB UP LOCATION ON SIDE OF GARAGE ELEVATOR EQUIPMENT RM. CONNECT CONDUIT TO NEW NEMA 3 PULL BOXES ON SIDE OF GARAGE EQUIPMENT RM (SEE SHEET NOTE 7).
- PROVIDE QTY (2) 12" H X 12" W X 8" D NEMA 3 PULL BOXES. LOCATE FIRST PULL BOX OUTSIDE 1ST LEVEL ELEVATOR MACHINE ROOM AND SECOND PULL BOX OUTSIDE 2ND LEVEL EQUIPMENT ROOM. CONNECT 1ST LEVEL PULL BOX TO EXISTING 4" CONDUIT STUB UP. INSTALL QTY (2) 2" CONDUITS BETWEEN 1ST LEVEL AND 2ND LEVEL PULL BOX. PAINT CONDUIT AND PULL BOXES TO MATCH EXISTING SURFACES.
- INSTALL 3/4" CONDUIT FROM 1ST LEVEL EXTERIOR PULL BOX TO ELEVATOR MACHINE ROOM EQUIPMENT FOR CONNECTION OF ELEVATOR PHONE. (COORDINATE CONDUIT ROUTING WITH VA MAINTENANCE STAFF).
- INSTALL OSP RATED CAT 6 CABLE (BERKTEK LANMARK-6 OSP, BELDEN P/N 5454XNS OR APPROVED EQUAL) FROM ELEVATOR PHONE CONNECTION LOCATION IN ELEVATOR MACHINE ROOM TO BUILDING 1 TELECOM ROOM. TERMINATE CABLE AT BUILDING 1 TELECOM ROOM ON WALL MOUNTED ENTRANCE PROTECTION TERMINALS (M/PORTA SYSTEMS P/N 606 OR APPROVED EQUAL). CROSS CONNECT TO EXISTING WALL MOUNTED 110 PHONE TERMINATION BLOCKS IN TELECOM ROOM. COORDINATE PHONE CROSS CONNECT WITH VA IT STAFF.
- DISCONNECT EXISTING CCTV EQUIPMENT INCLUDING (1) 16-CHANNEL NETWORK VIDEO RECORDER (NVR) AND (2) DIRECT ATTACHED VIDEO STORAGE UNITS LOCATED IN EXISTING BUILDING 15A RACK. RELOCATE CCTV EQUIPMENT TO EXISTING RACK IN BUILDING 1 TELECOM ROOM. (COORDINATE MOUNTING LOCATION WITH VA IT DEPARTMENT). DEMO QTY (16) RS-54 CCTV CABLES FROM BLDG 15A TELECOM ROOM TO CCTV TERMINATION PANEL LOCATED ABOVE GARAGE ELEVATOR EQUIPMENT ROOM.
- INSTALL 2" CONDUIT FROM 2ND LEVEL EXTERIOR PULL BOX TO EXISTING WALL MOUNTED CCTV TERMINATION CABINET LOCATED IN 2ND LEVEL EQUIPMENT ROOM FOR CONNECTION OF CCTV CABLES (COORDINATE CONDUIT ROUTING WITH VA MAINTENANCE STAFF).
- INSTALL QTY (16) OSP RATED RS-54 CCTV CABLES (BELDEN P/N 5454XNS OR APPROVED EQUAL) FROM EXISTING GARAGE 2ND LEVEL CCTV TERMINATION CABINET TO THE BUILDING 1 TELECOM ROOM. CONNECT CABLES TO EXISTING BNC COUPLERS IN EXISTING GARAGE CCTV TERMINATION CABINET. TERMINATE CABLES AT THE BUILDING 1 TELECOM ROOM ON WALL MOUNTED 4-PORT RS-54 PROTECTION BLOCKS AND CONNECT TO RELOCATED CCTV NVR EQUIPMENT. LABEL CABLES AT EACH END TO MATCH EXISTING CAMERA NUMBERING.
- DISCONNECT EXISTING PAGING SYSTEM CABINET AND RELOCATE TO BUILDING 1 ELECTRICAL ROOM. COORDINATE WALL MOUNTING LOCATION WITH EXISTING EQUIPMENT. PULL BACK EXISTING 12-STRAND MM FIBER FEEDING PAGING CABINET TO PULL BOX ADJACENT TO BUILDING 8. RE-PULL FIBER CABLE THROUGH EXISTING CONDUIT TO THE BUILDING 1 ELECTRICAL ROOM AND RE-TERMINATE AT THE PAGING SYSTEM CABINET. PULL BACK EXISTING BUILDING 8 SPEAKER CABLING CONNECTED TO CABINET TO PULL BOX ADJACENT TO BUILDING 8. RE-PULL SPEAKER CABLE THROUGH EXISTING CONDUIT TO THE BUILDING 1 ELECTRICAL ROOM AND RE-TERMINATE AT PAGING SYSTEM CABINET. RECONNECT QTY (2) BUILDING 1 PAGING SPEAKERS TO RELOCATED PAGING SYSTEM CABINET.
- EXISTING (4) 4" CONDUITS. INSTALL QTY (2) 3" 3-CELL DETECTABLE FABRIC INNERDUCTS (MAXCELL MXP3456XX) IN (1) OF THE (4) CONDUITS SOUTH OF THE MANHOLE SOUTH OF THE BLDG 8 BOILER PLANT TO THE BUILDING 1 TELECOM ROOM.
- EXISTING (4) 4" CONDUITS. INSTALL QTY (2) 3" 3-CELL DETECTABLE FABRIC INNERDUCTS (MAXCELL MXP3456XX) IN (1) OF THE (4) CONDUITS FROM THE EXISTING PULL BOX ON THE SOUTH EAST CORNER OF THE BLDG 8 BOILER PLANT TO THE PULL BOX ON THE SIDE OF THE GARAGE 2ND LEVEL EQUIPMENT ROOM (LOCATED ABOVE THE ELEVATOR MACHINE ROOM).
- EACH MAXCELL INNERDUCT SHALL HAVE A DIFFERENT STITCHING COLOR (BLACK, BLUE OR RED). INNERDUCTS SHALL BE CUT AT EACH PULL POINT (MANHOLE, PULL BOX, ETC) AND SHALL BE SECURED TO THE UNISTRUT RACKING SO THAT THE INNERDUCT CANNOT BE PULLED BACK INTO THE CONDUIT. WHERE POSSIBLE, THE CONTRACTOR SHALL PULL MULTIPLE CABLES IN A SINGLE CELL OF THE FABRIC INNERDUCT LEAVING THE REMAINING CELLS EMPTY FOR FUTURE USE.



A OVERALL TELECOM SITE PLAN  
TD-1.1 SCALE: 1" = 16'-0"

Revision #1		4-04-17	CONSULTANTS:		ARCHITECT/ENGINEERS:		Drawing Title		Project Title		Project Number		Office of Construction and Facilities Management: <div> Department of Veterans Affairs</div>	
			<div><b>PK Electrical, Inc.</b> <i>Engineering · Design · Consulting</i> <small>681 Sierra Rose Dr, Ste B   Reno, NV 89511   775.826.9010 5105 DTC Pkwy, Ste 420   Greenwood Village, CO 80131   720.481.3290 pk electrical.com © 2008-2015 PK Electrical, Inc. 10040</small></div>		<div><b>ARCHITECT/ENGINEERS:</b> <b>SIKORA</b> <b>ARCHITECTURE</b> 488 CORVALLIS COURT RENO, NEVADA 89511 775 - 852 - 5800 eric@sikora-architecture.com JOB: II-007</div>		OVERALL TELECOM SITE PLAN		DEMOLITION OF BUILDINGS: 15A, 15B, F, K, 138		654-16-603			
							15A, 15B, F, K, 138							
							Approved: Project Director		Location 975 KIRMAN AVE. RENO, NV 89502		Drawing Number TD-1.1 Dwg. 4 of 10			
							Date 4-3-17		Checked JEG	Drawn JGA				