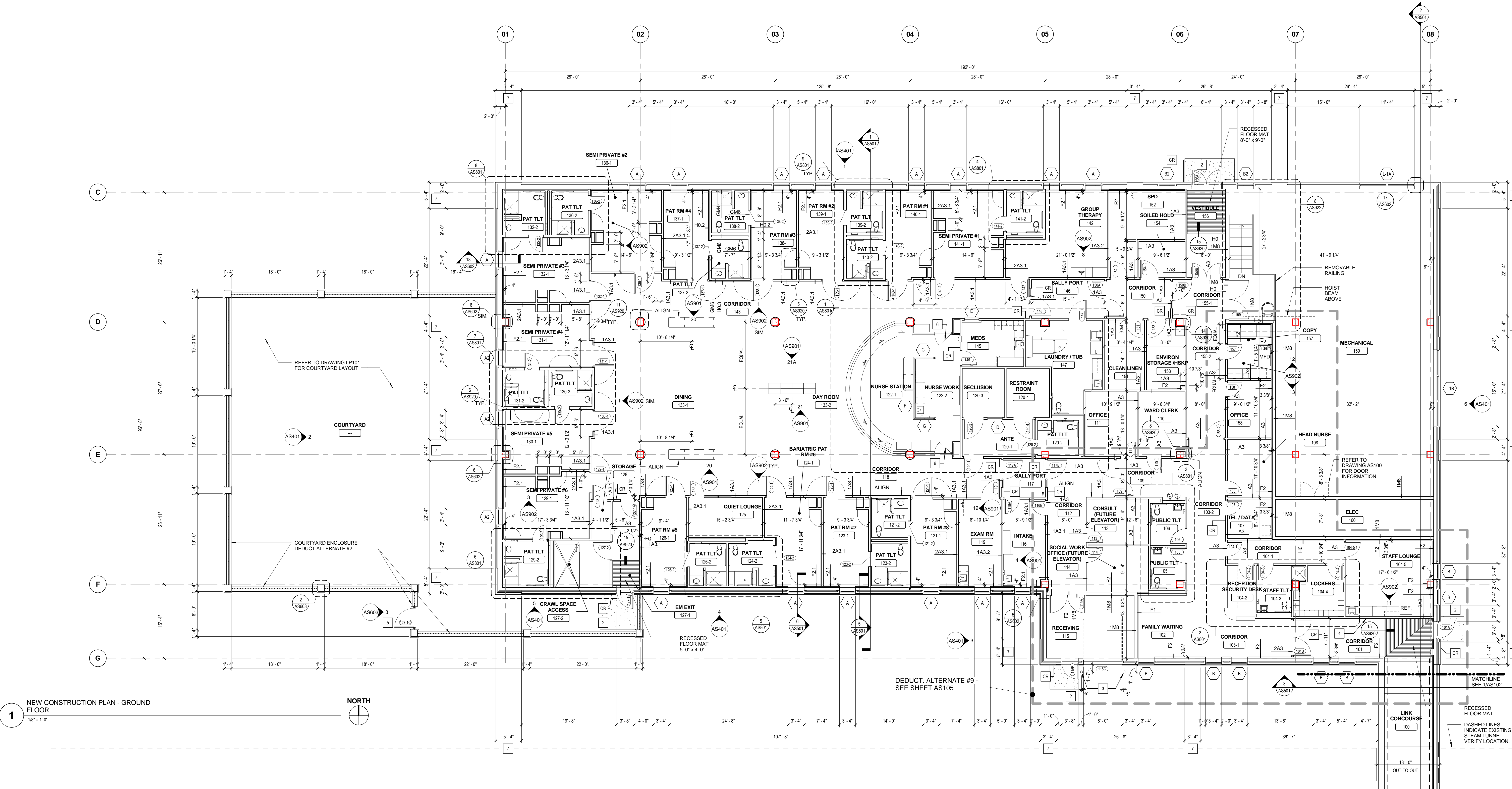


GENERAL NOTES (NEW CONSTRUCTION)
SCALE: N/A

1. PARTITIONS SHOWN ON THIS DRAWING SHALL BE PARTITION TYPE 'A3' UNLESS NOTED OTHERWISE. SEE AS320 FOR ADDITIONAL INFO.
2. ALL MASONRY DIMENSIONS SHOWN ARE NOMINAL.
3. SEE WALL FINISH PLANS (201) FOR EXTENT OF HANDRAIL FOR PROVIDING BLOCKING.
4. ITEMS NOTED AS 'B/O' ARE OWNER FURNISHED AND INSTALLED.

NEW CONSTRUCTION NOTE BLOCK	
Keynote Number	Description
1	NOT USED.
2	CONCRETE STOOP - SEE STRUCTURAL DRAWINGS
3	BOLLARD - SEE DETAIL 23/AS602
4	LEED PLAQUE FURNISHED B.O., INSTALLED BY VA.
5	ALUMINUM GATE
6	PARTIAL HEIGHT DOOR - SEE ELEVATION 22/AS901 AND ENLARGED PLAN 1/AS801 FOR ADDITIONAL INFORMATION. PROVIDE DOOR HARDWARE GROUP 7.
7	LOCATION OF 1" BRICK BUMPOUT - SEE WALL SECTION 8/AS501



100% OWNER REVIEW
NOT FOR CONSTRUCTION
12/16/2011



RSP Architects
1220 Marshall Street NE
Minneapolis
Minnesota 55413-1036
612.677.7100
612.677.7499 fax
www.rsparch.com

NOTICE: The designs shown and described herein including all technical drawings, graphics, and models thereof, are proprietary and cannot be copied, duplicated or commercially exploited, in whole or in part, without express written permission of RSP Architects. These are available for limited review and evaluation by clients, consultants, contractors, government agencies, vendors and office personnel only in accordance with this Notice.

© Copyright RSP Architects 2011. All rights reserved.



CONSULTANTS:

Structural
Van Sickle, Allen & Assoc.
2955 Xenium Lane N
Suite 10
Plymouth, MN 55441

Civil
EVS
10250 Valley View Road
Suite 113
Eden Prairie, MN 55344

MEP
Dunham Associates
50 South Sixth Street
Suite 1100
Minneapolis, MN 55402

Fire Protection
Gary Travinski Associates
Engineering
34 Boston Hill
Larkville, PA 18651-3298

Landscape
Damon Farbar Assoc.
923 Nicolet Mall
Minneapolis, MN 55402

I hereby certify that this plan, specification or report was prepared by me or under my direct supervision and that I am a duly licensed Architect under the laws of the State of Minnesota.

Signature

Registration No.

Date

APPROVED SERVICE LINE DIRECTOR	DATE	APPROVED INFECTION CONTROL NURSE	DATE
APPROVED GENE COORDINATOR	DATE	APPROVED PATIENT SAFETY	DATE
APPROVED PROJECTS SECTION MANAGER	DATE	APPROVED CHIEF OF POLICE	DATE
APPROVED DIRECTOR FMS	DATE	APPROVED SAFETY MANAGER	DATE

DRAWING TITLE	DATE
NEW CONSTRUCTION PLAN - GROUND FLOOR	12/16/2011

PROJECT TITLE	DATE
LINK TERM / INTERMEDIATE PSYCHIATRIC UNIT	12/16/2011

BUILDING No.	CHECKED BY	DATE	DATE
CS, KC	MC		
LOCATION	DATE	DRAWING No.	DATE
4801 VETERANS DRIVE, ST. CLOUD MN		AS101	12/16/2011

