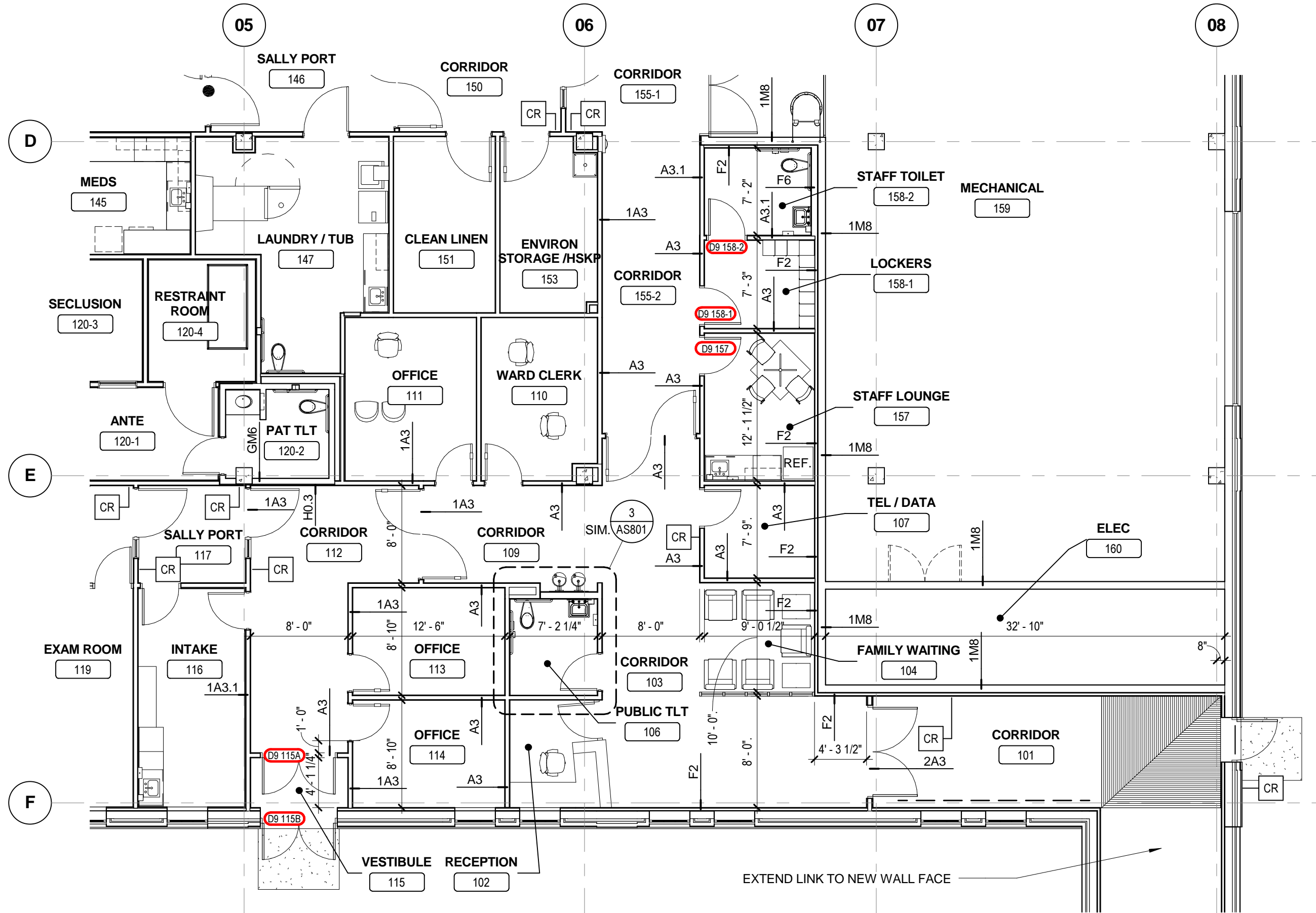
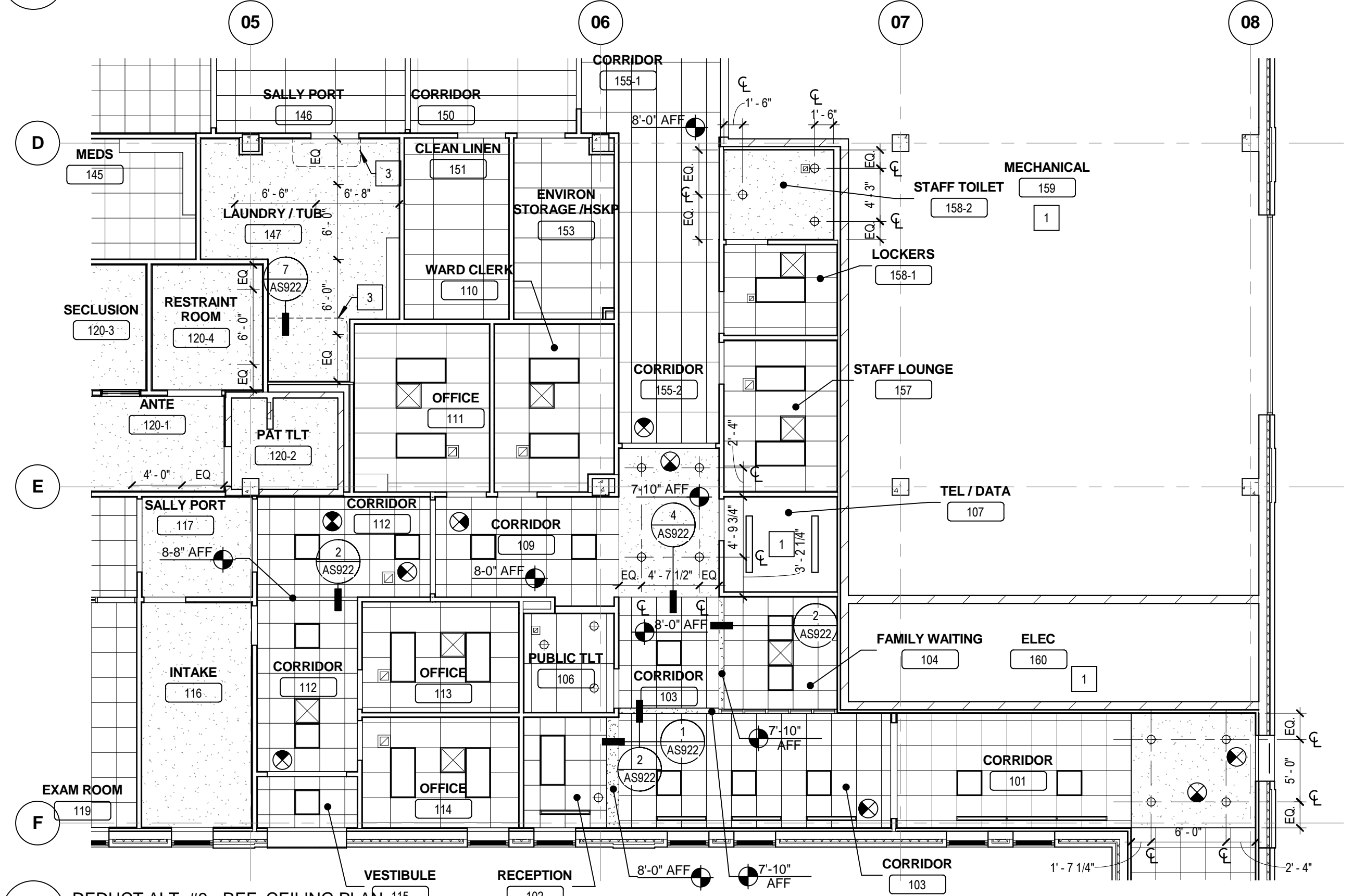


1 DEDUCT ALT. #9 - CRAWL SPACE PLAN
1/8" = 1'-0"



2 DEDUCT ALT. #9 - NEW CONST. PLAN
1/8" = 1'-0"

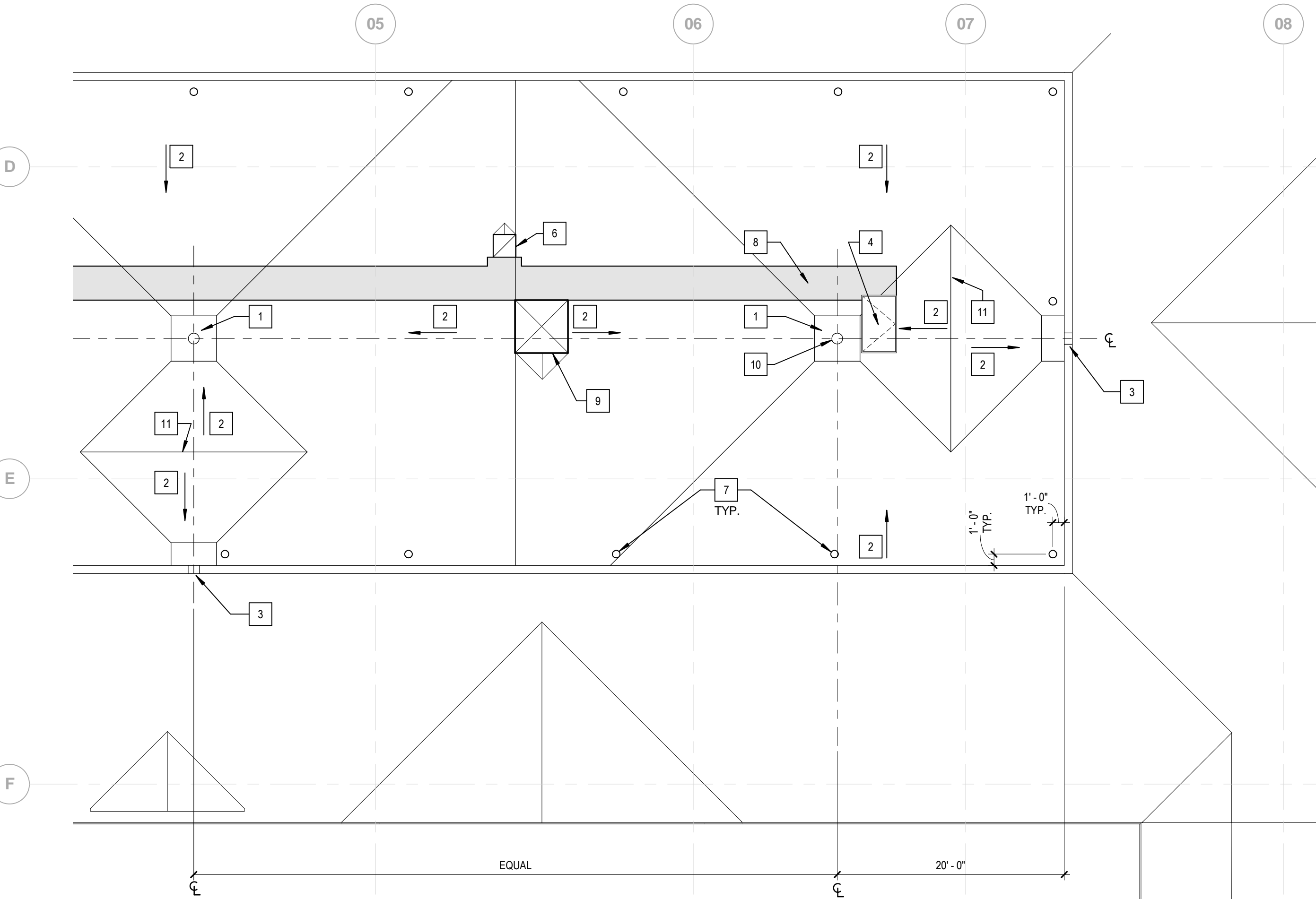


3 DEDUCT ALT. #9 - REF. CEILING PLAN
1/8" = 1'-0"

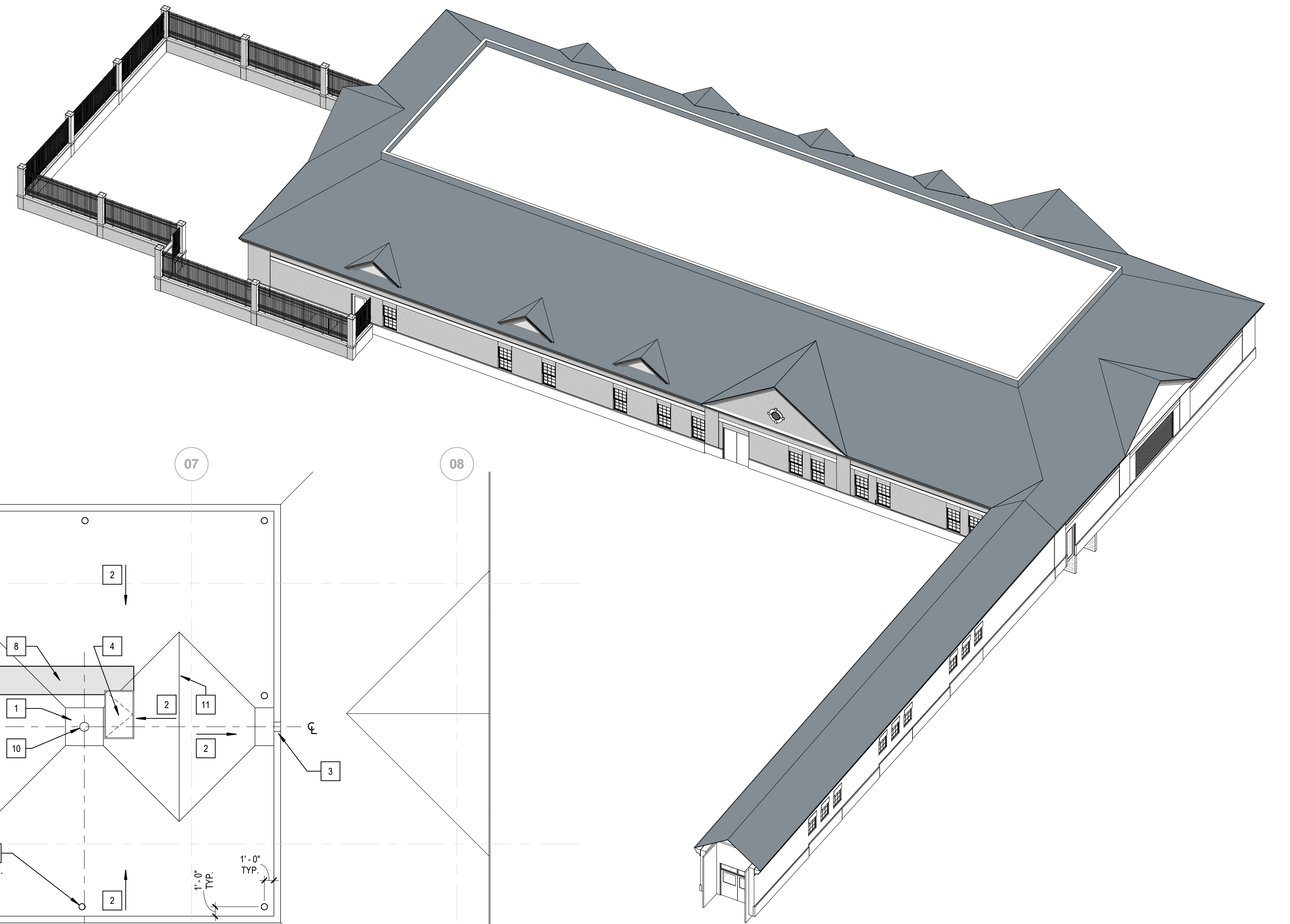
GENERAL NOTES (DEDUCT ALTERNATE SHEET AS105)

SCALE: N/A

1. REFER TO BASE PLAN AND ELEVATION SHEETS FOR KEYNOTE INFORMATION.

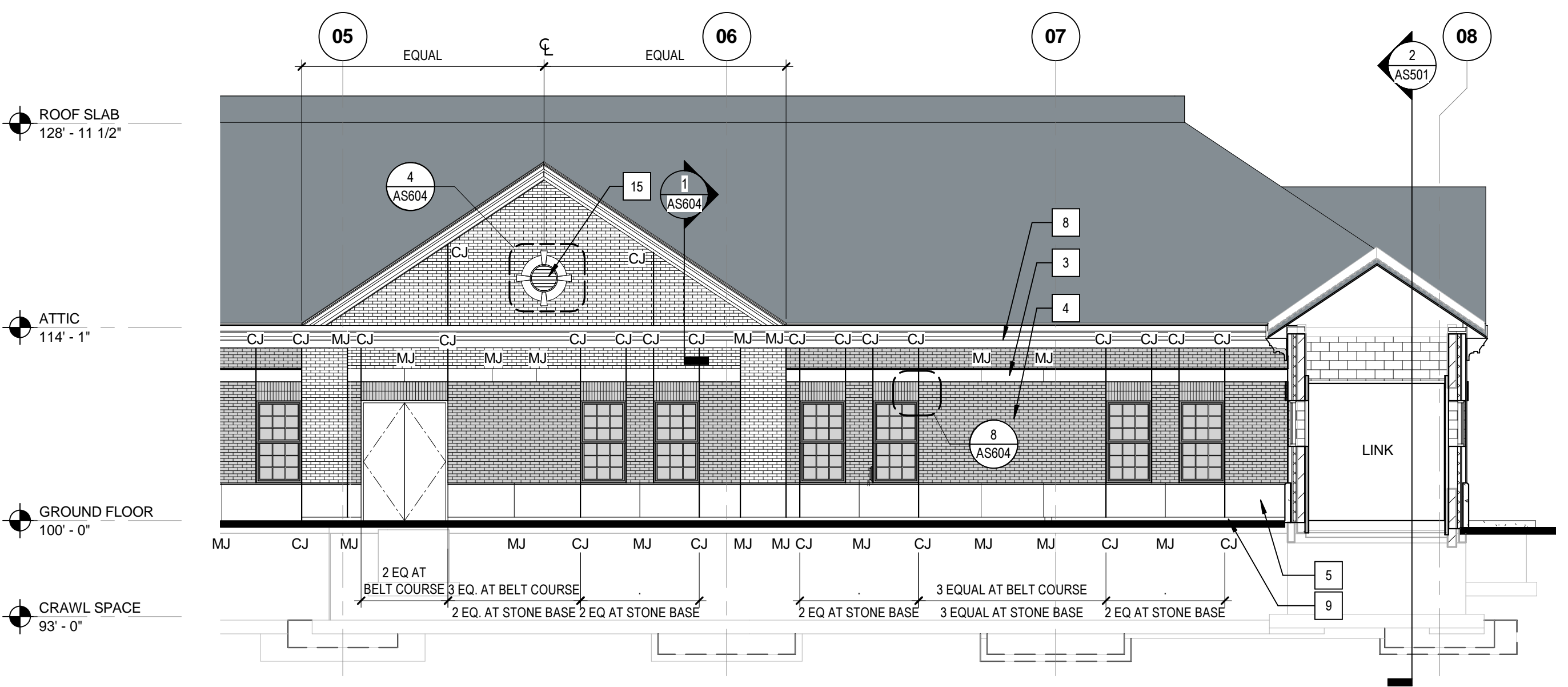


4 DEDUCT ALTERNATE #9 - ROOF PLAN
1/8" = 1'-0"



6 DEDUCT ALTERNATE #9 - BIRD'S EYE FOR REFERENCE

DEDUCT ALTERNATE #9 - DOOR SCHEDULE																	
DOOR										FRAME				SPECS.		COMMENTS	
NO.	W	H	T	TYPE	MATL.	GLASS	PAIR	TYPE	MATL.	GLASS	HEAD	JAMB	SILL	RATING	HDWR.		
D9 115A	6' - 0"	8' - 7"	1 3/4"	N1	HOLLOW METAL	GL-5	Yes	F2	HM						26	4	4
D9 115B	6' - 0"	8' - 7"	1 3/4"	F	HOLLOW METAL		Yes	F2	HM						26		
D9 157	3' - 0"	7' - 0"	1 3/4"	N	WOOD	GL-4	No	F1	HM						02		
D9 158-1	3' - 0"	7' - 0"	1 3/4"	F	WOOD		No	F1	HM						02		
D9 158-2	3' - 0"	7' - 0"	1 3/4"	F	WOOD		No	F1	HM						03		



5 DEDUCT ALTERNATE #9 - SOUTH ELEVATION
1/8" = 1'-0"

100% OWNER REVIEW
NOT FOR CONSTRUCTION
12/16/2011



RSP Architects
1220 Marshall Street NE
Minneapolis
Minnesota 55413-1036
612.677.7100
612.677.7499 fax
www.rsparch.com

NOTICE: The designs shown and described herein including all technical drawings, graphics, and models thereof, are proprietary and cannot be copied, duplicated or commercially exploited, in whole or in part, without express written permission of RSP Architects. These are available for limited review and evaluation by clients, consultants, contractors, government agencies, vendors and office personnel only in accordance with this Notice.

© Copyright RSP Architects 2011. All rights reserved.



CONSULTANTS:

Structural
Van Sickle, Allen & Assoc.
2955 Xenium Lane N
Suite 110
Plymouth, MN 55441

Civil
EVS
10250 Valley View Road
Suite 113
Eden Prairie, MN 55344

MEP
Dunham Associates
50 South Sixth Street
Suite 1100
Minneapolis, MN 55402

Fire Protection
Gary Travinski Associates
Engineering
94 Boston Hill
Larksville, PA 18851-3298

Landscape
Damon Farbar Assoc.
823 Nicollet Mall
Minneapolis, MN 55402

I hereby certify that this plan, specification or report was prepared by me or under my direct supervision and that I am a duly licensed Architect under the laws of the State of Minnesota.

Signature

Registration No.

Date

APPROVED SERVICE LINE DIRECTOR	DATE	APPROVED INFECTION CONTROL NURSE	DATE
APPROVED GENE COORDINATOR	DATE	APPROVED PATIENT SAFETY	DATE
APPROVED PROJECTS SECTION MANAGER	DATE	APPROVED CHIEF OF POLICE	DATE
APPROVED DIRECTOR FMS	DATE	APPROVED SAFETY MANAGER	DATE

DRAWING TITLE	DATE
DEDUCT ALTERNATE #9 FLOOR PLANS, EXTERIOR ELEVATION AND DOOR SCHEDULE	12/16/2011
PROJECT NO.	1002.001.00
CAD FILE	

PROJECT TITLE	LONG TERM / INTERMEDIATE PSYCHIATRIC UNIT
BUILDING No.	
CHECKED BY	Author
LOCATION	4801 VETERANS DRIVE, ST CLOUD MN

DRAWING NO.	AS105
DATE	12/16/2011
PROJECT NO.	1002.001.00
CAD FILE	

