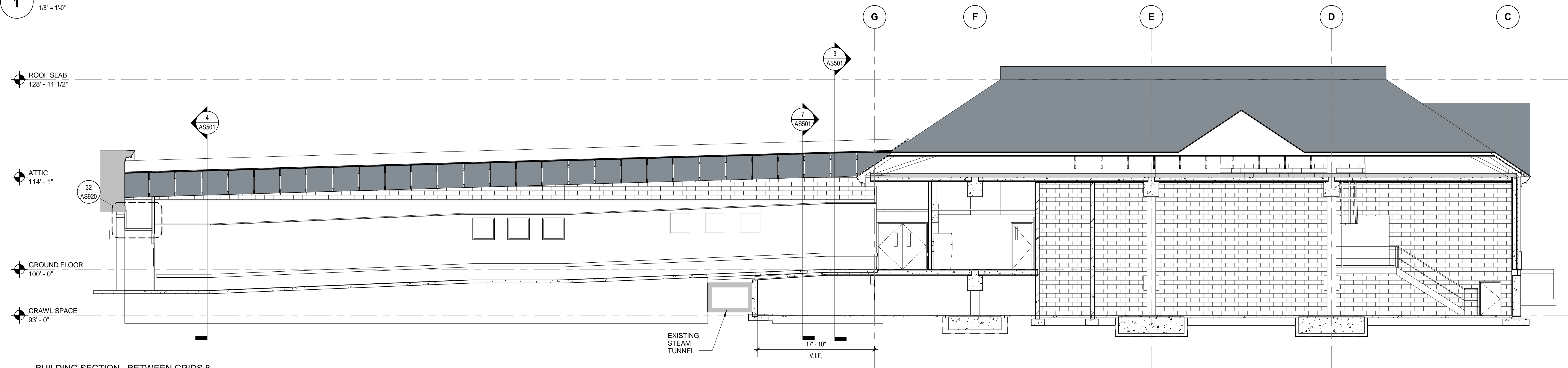
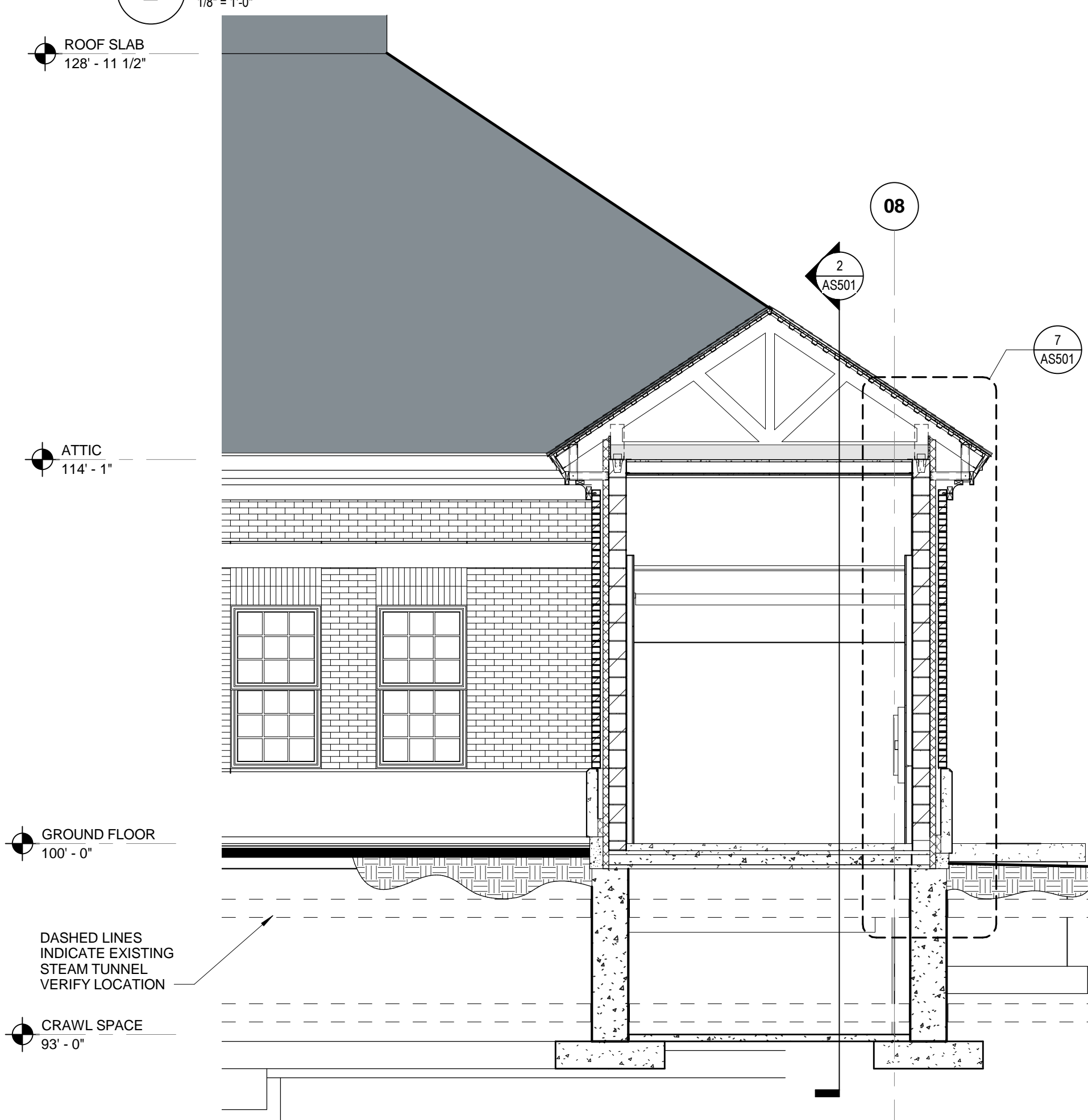


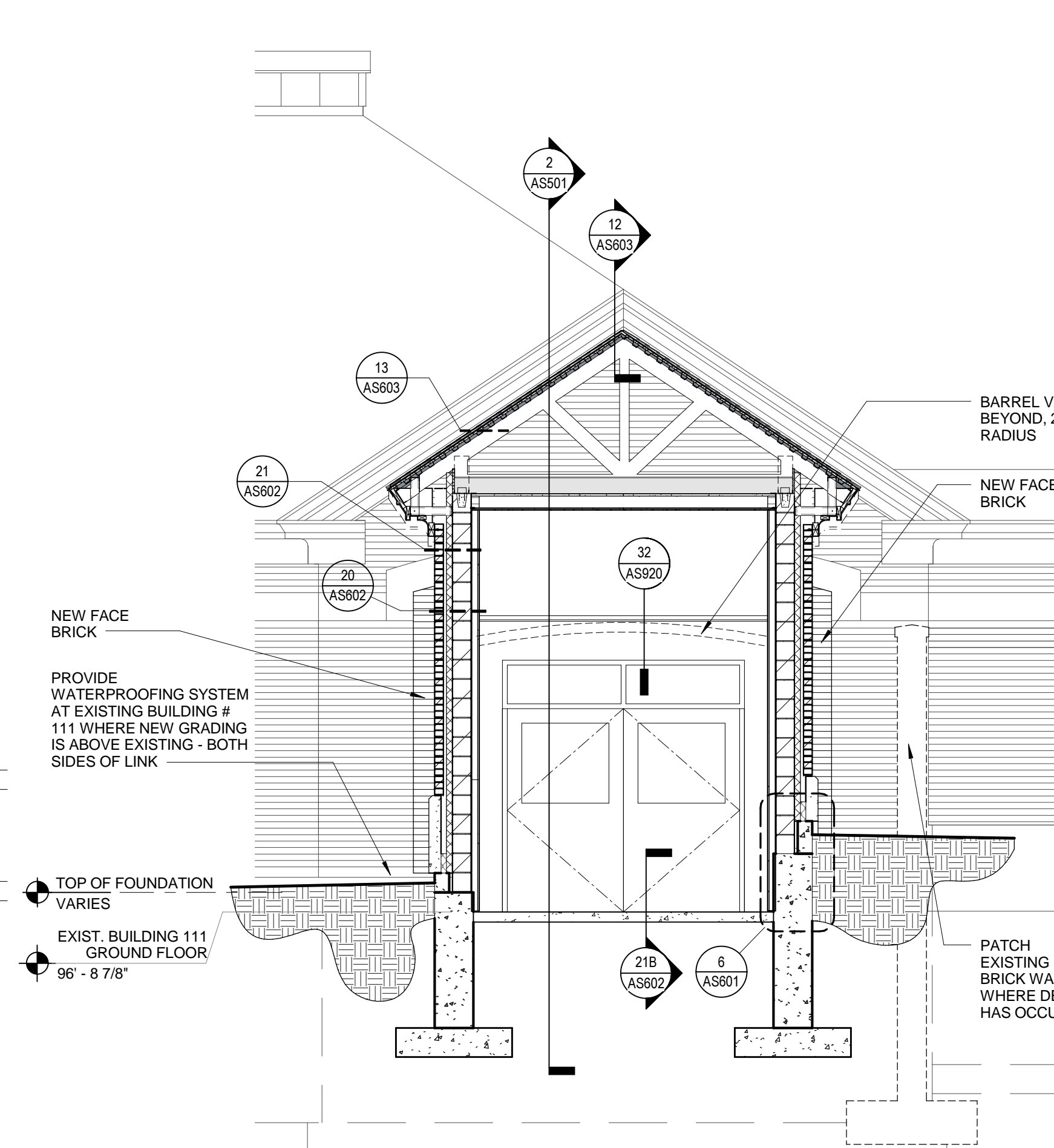
1 BUILDING SECTION - BETWEEN GRIDS 4 AND 5 LOOKING WEST
18" = 1'-0"



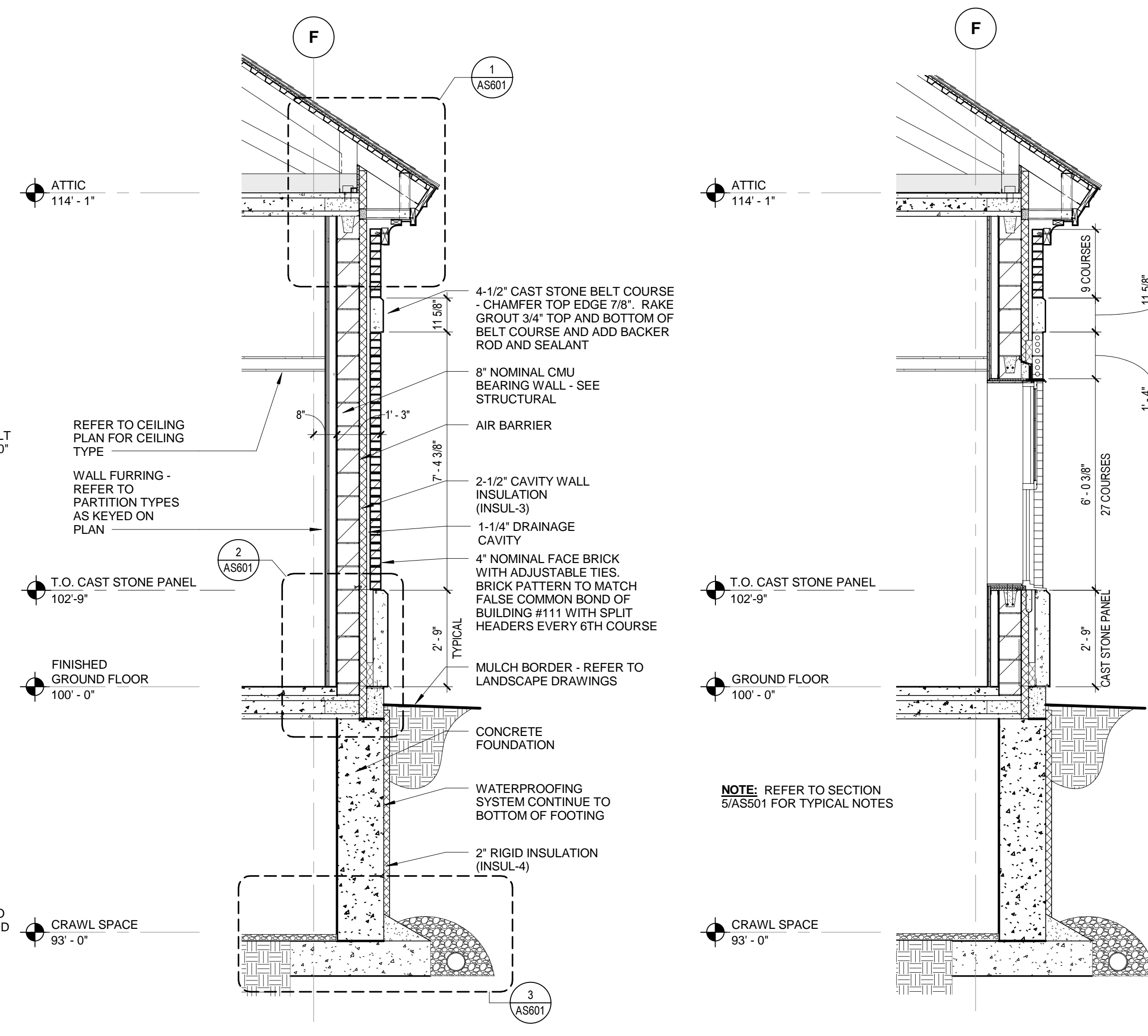
2 BUILDING SECTION - BETWEEN GRIDS 8 AND 9 LOOKING WEST
18" = 1'-0"



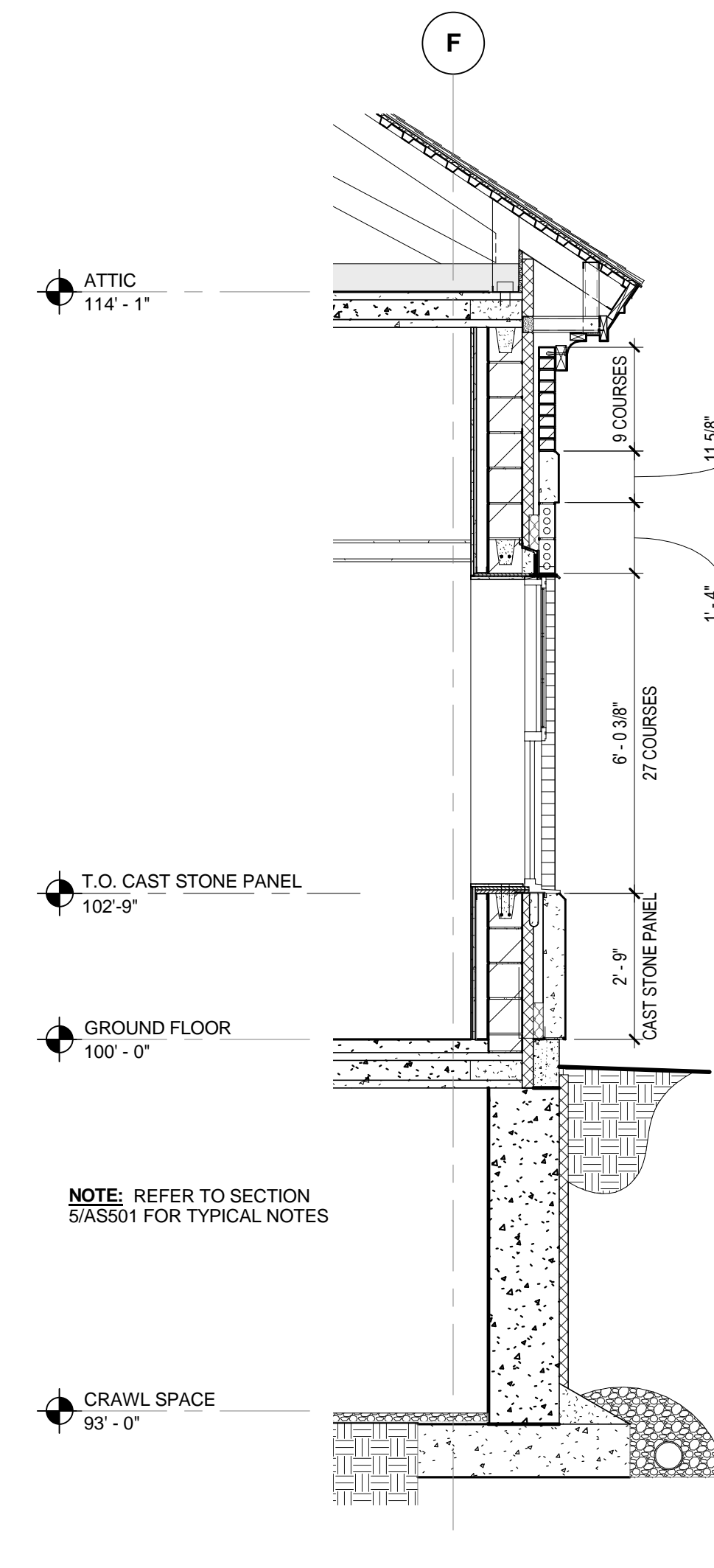
3 BUILDING SECTION / ELEVATION AT CONNECTION LINK - LOOKING NORTH
14" = 1'-0"



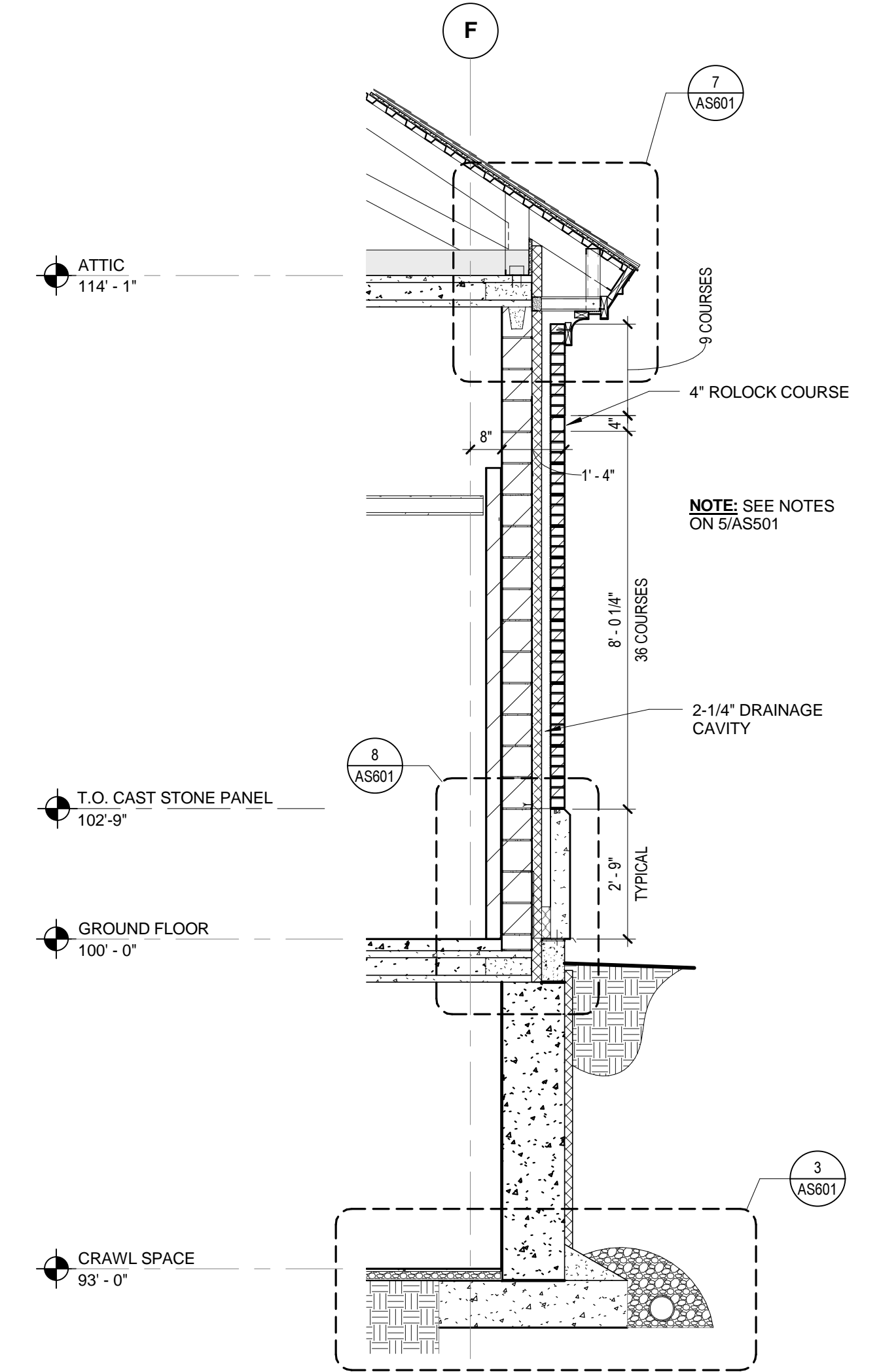
4 BUILDING SECTION / ELEVATION AT CONNECTION LINK - LOOKING SOUTH
14" = 1'-0"



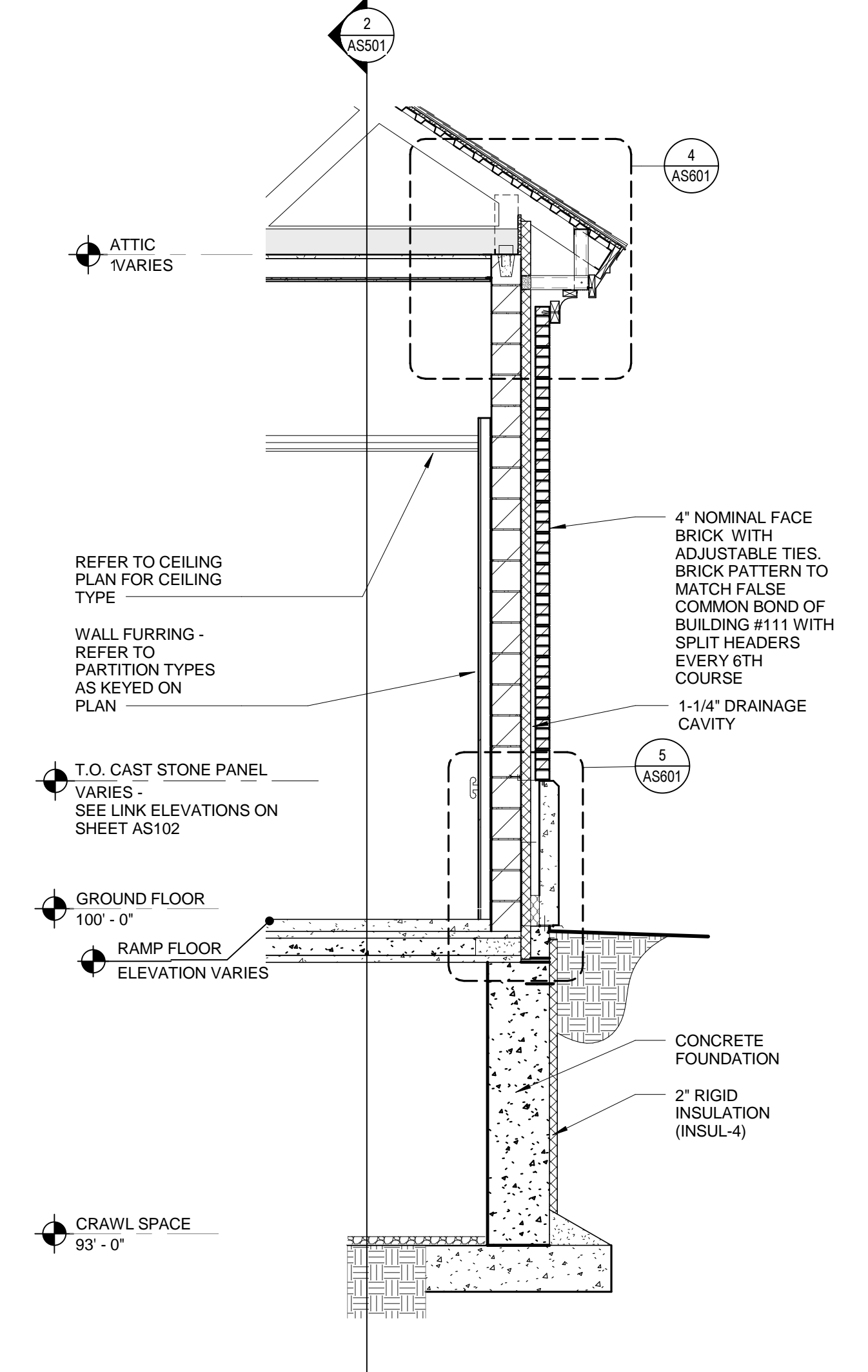
5 WALL SECTION - TYPICAL
38" = 1'-0"



6 WALL SECTION AT WINDOW
38" = 1'-0"



7 WALL SECTION AT 1" BRICK BUMPOUT
38" = 1'-0"



8 WALL SECTION AT CONNECTION LINK
38" = 1'-0"

100% OWNER REVIEW
NOT FOR CONSTRUCTION
12/16/2011



RSP Architects
1220 Marshall Street NE
Minneapolis
Minnesota 55413-1036
612.677.7100
612.677.7499 fax
www.rsparch.com

NOTICE: The designs shown and described herein including all technical drawings, graphics, and models thereof, are proprietary and cannot be copied, duplicated or commercially exploited, in whole or in part, without express written permission of RSP Architects. These are available for limited review and evaluation by clients, consultants, contractors, government agencies, vendors and office personnel only in accordance with this Notice.

© Copyright RSP Architects 2011. All rights reserved.



CONSULTANTS:

Structural
Van Sickle, Allen & Assoc.
2955 Xenium Lane N
Suite 10
Plymouth, MN 55441

Civil
EVS
10250 Valley View Road
Suite 113
Eden Prairie, MN 55344

MEP
Dunham Associates
50 South Sixth Street
Suite 100
Minneapolis, MN 55402

Fire Protection
Gary Travinski Associates
Engineering
94 Boston Hill
Larksville, PA 18651-3298

Landscape
Damon Farbar Assoc.
923 Nicollet Mall
Minneapolis, MN 55402

I hereby certify that this plan, specification or report was prepared by me or under my direct supervision and that I am a duly licensed Architect under the laws of the State of Minnesota.

Signature
Registration No.
Date

APPROVED SERVICE LINE DIRECTOR	DATE	APPROVED INFECTION CONTROL NURSE	DATE
APPROVED GENM COORDINATOR	DATE	APPROVED PATIENT SAFETY	DATE
APPROVED PROJECTS SECTION MANAGER	DATE	APPROVED CHIEF OF POLICE	DATE
APPROVED DIRECTOR FMS	DATE	APPROVED SAFETY MANAGER	DATE

DRAWING TITLE	DATE
BUILDING SECTION AND WALL SECTIONS	12/16/2011
APPROVED CHIEF OF STAFF	DATE
APPROVED MEDICAL CENTER DIRECTOR	DATE

PROJECT TITLE	LONG TERM / INTERMEDIATE PSYCHIATRIC UNIT
BUILDING No.	CHECKED BY
LOCATION	4801 VETERANS DRIVE, ST CLOUD MN

DRAWING No.	AS501
DATE	12/16/2011
PROJECT No.	10027801.00
CAD FILE	

