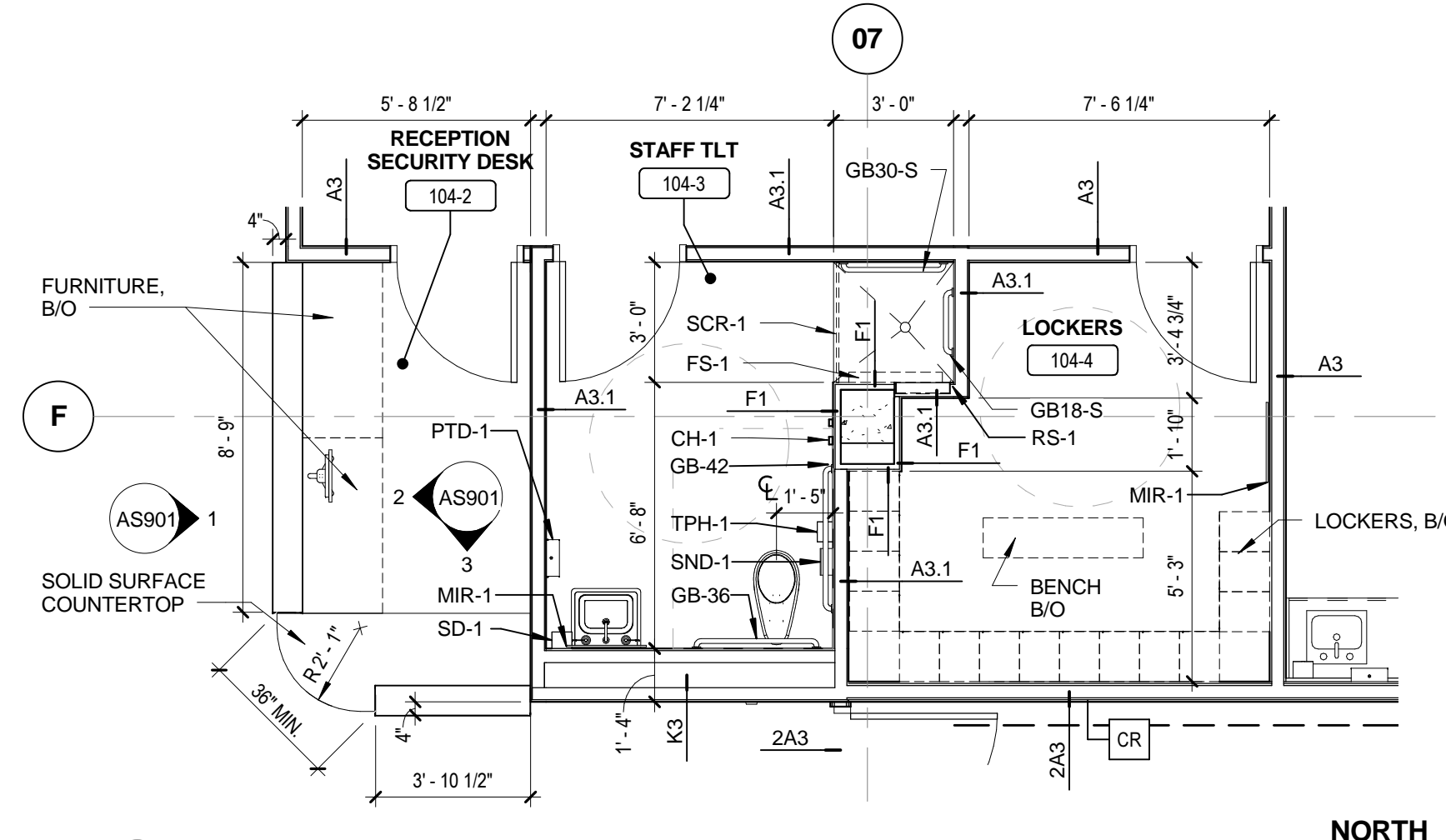
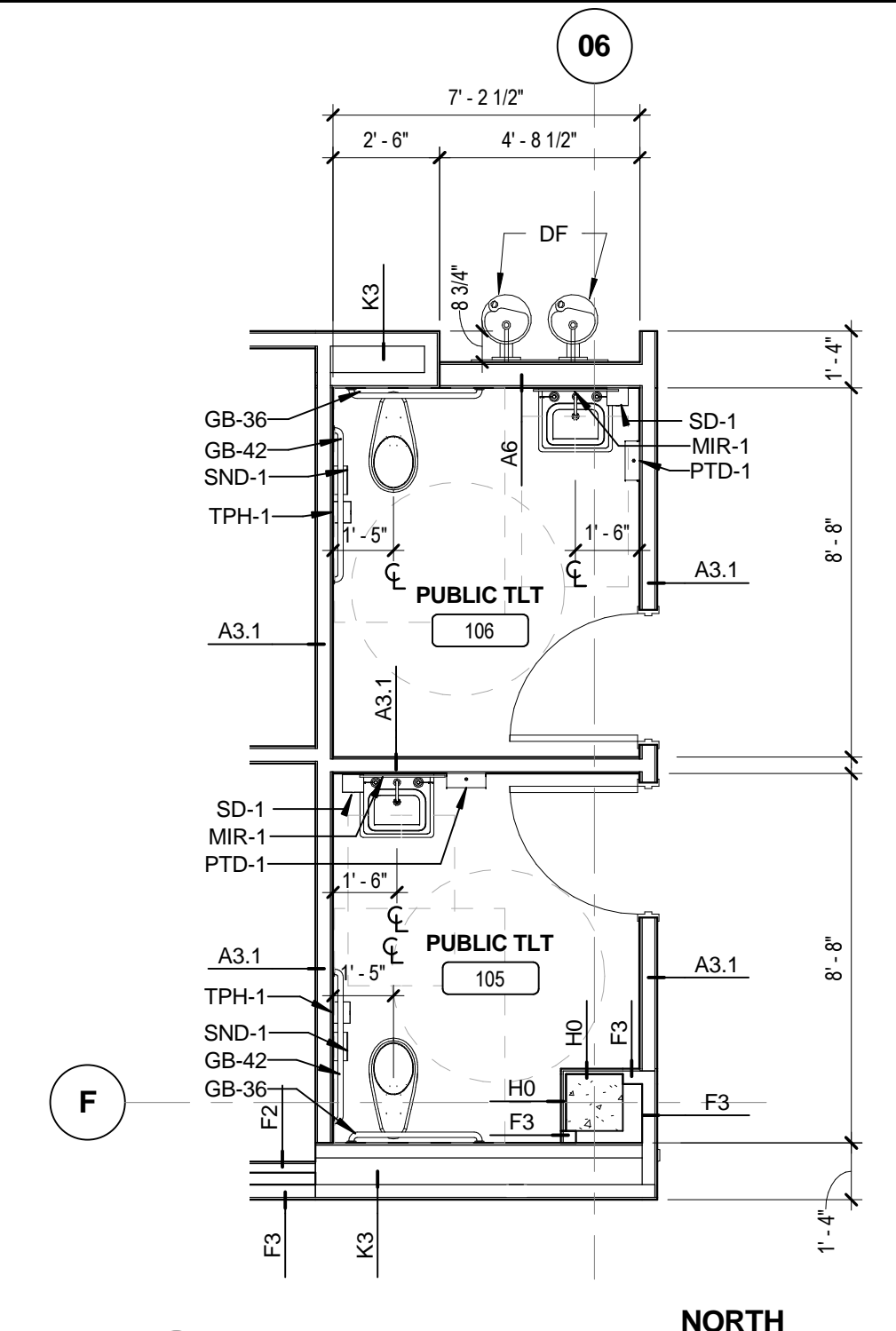


GENERAL NOTES (NEW CONSTRUCTION)
SCALE: N/A

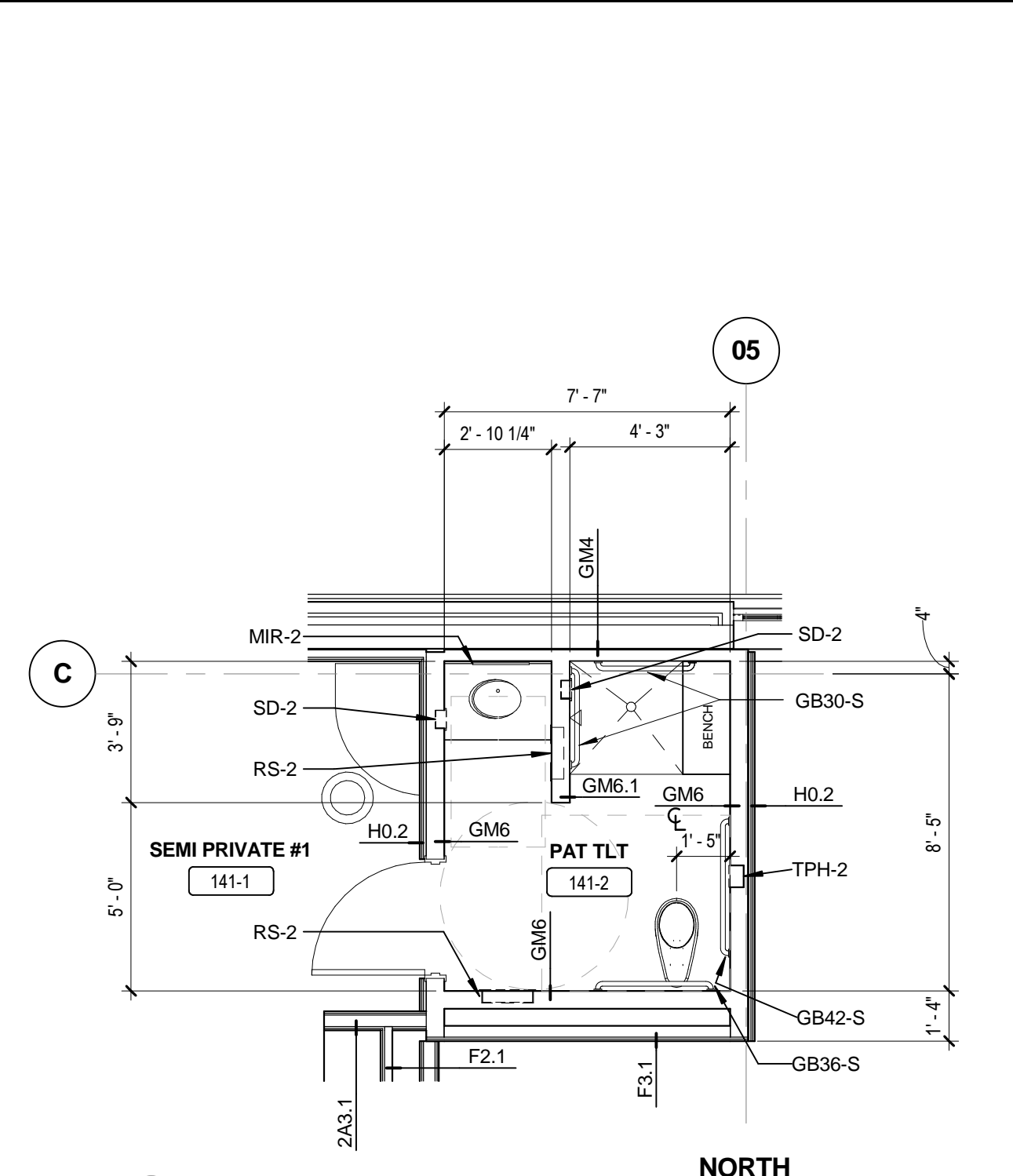
1. PARTITIONS SHOWN ON THIS DRAWING SHALL BE PARTITION TYPE 'A3' UNLESS NOTED OTHERWISE. SEE A3320 FOR ADDITIONAL INFO.
2. ALL MASONRY DIMENSIONS SHOWN ARE NOMINAL.
3. SEE WALL FINISH PLANS (201) FOR EXTENT OF HANDRAIL FOR PROVIDING BLOCKING.
4. ITEMS NOTED AS 'B/O' ARE OWNER FURNISHED AND INSTALLED.



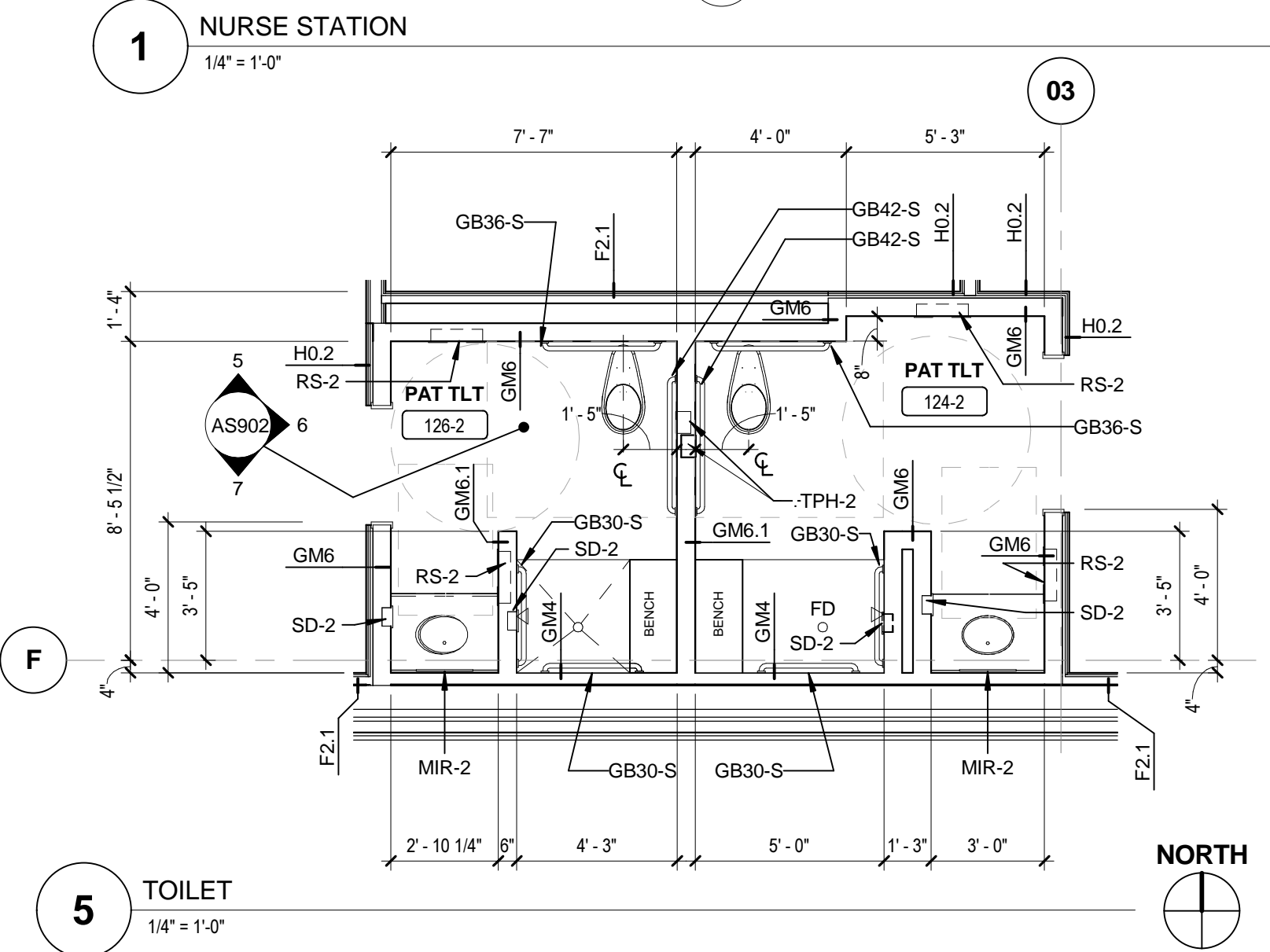
2 RECEPTION / SECURITY DESK
1/4" = 1'-0"



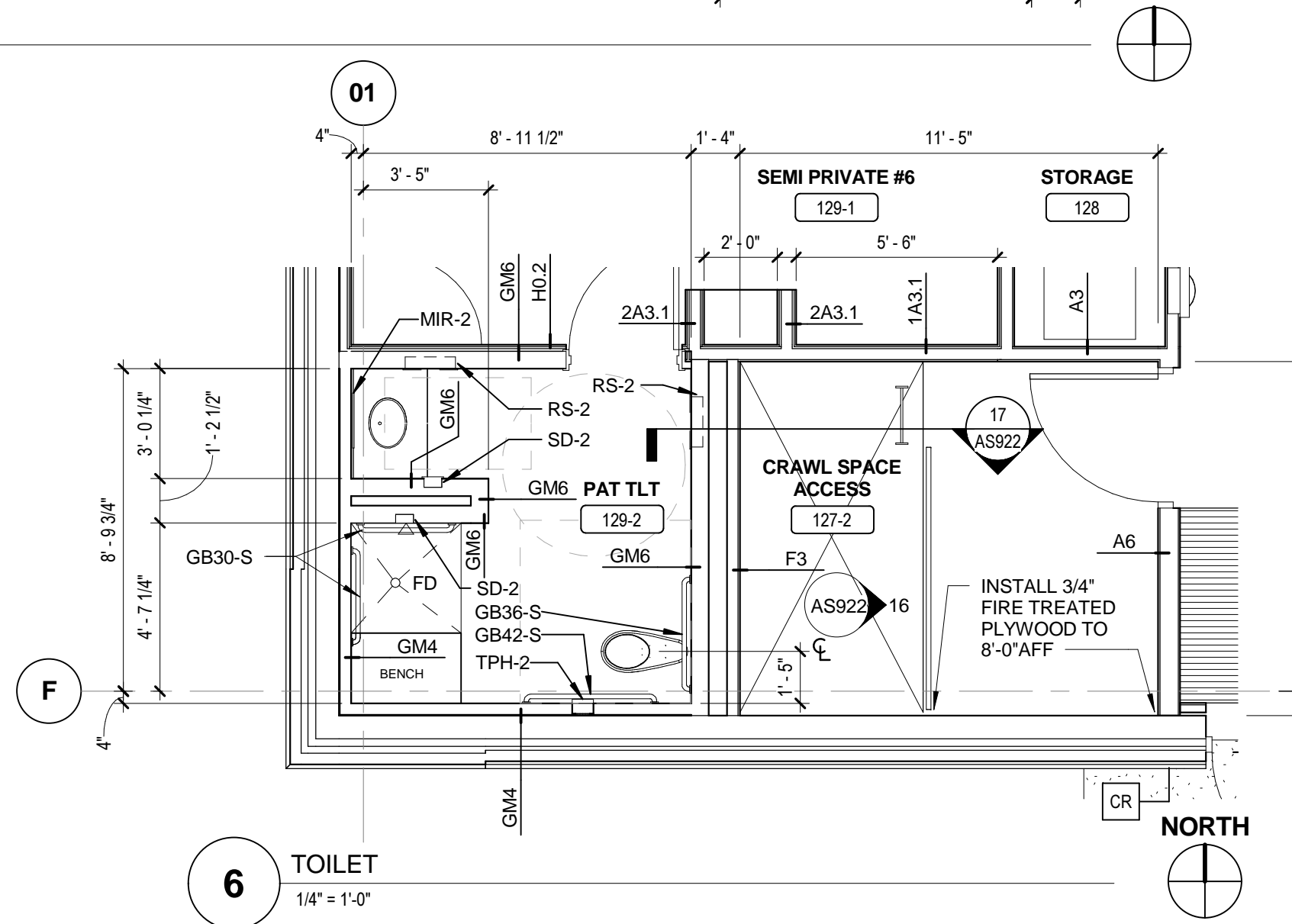
3 TOILET
1/4" = 1'-0"



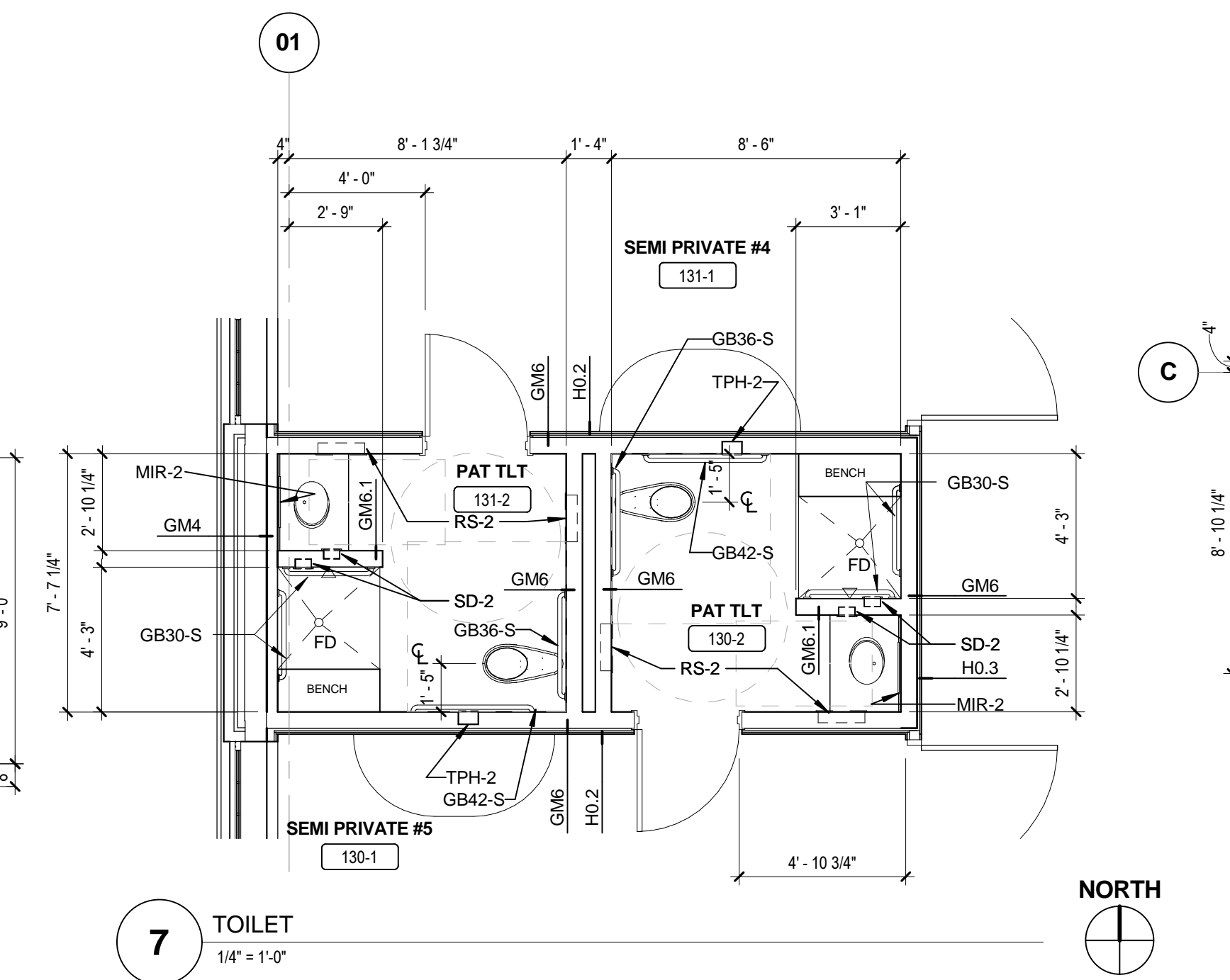
4 TOILET
1/4" = 1'-0"



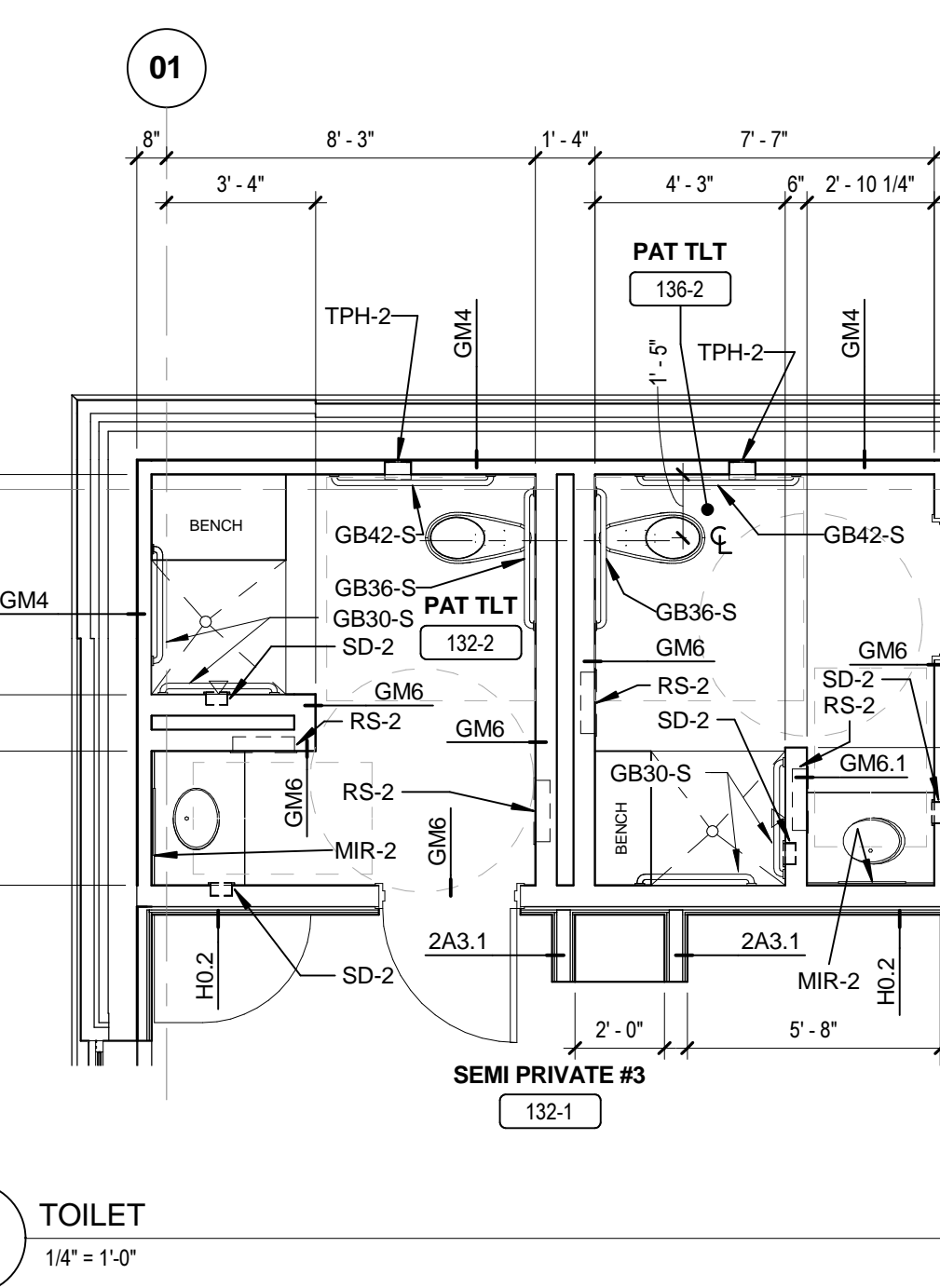
5 TOILET
1/4" = 1'-0"



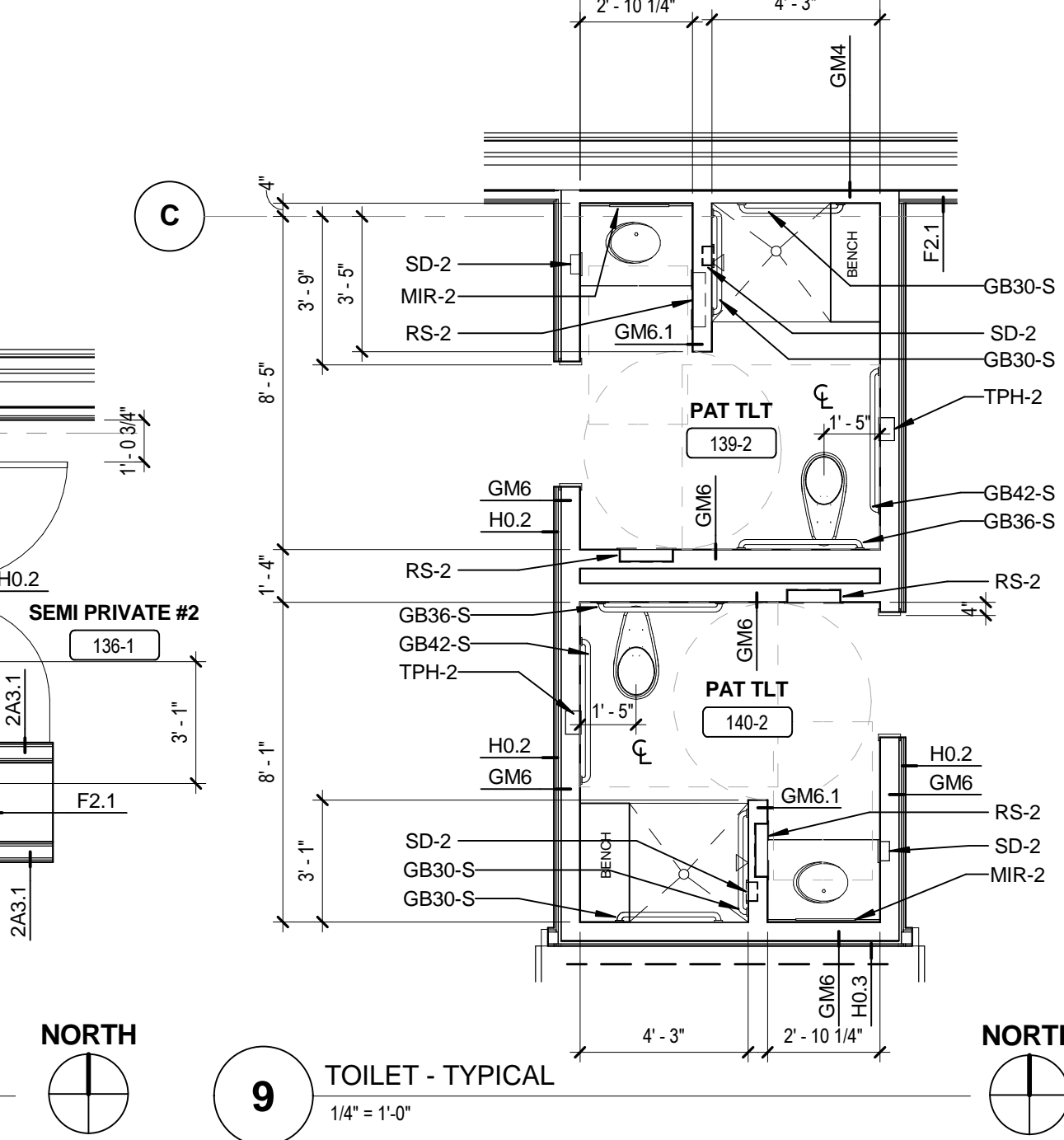
6 TOILET
1/4" = 1'-0"



7 TOILET
1/4" = 1'-0"



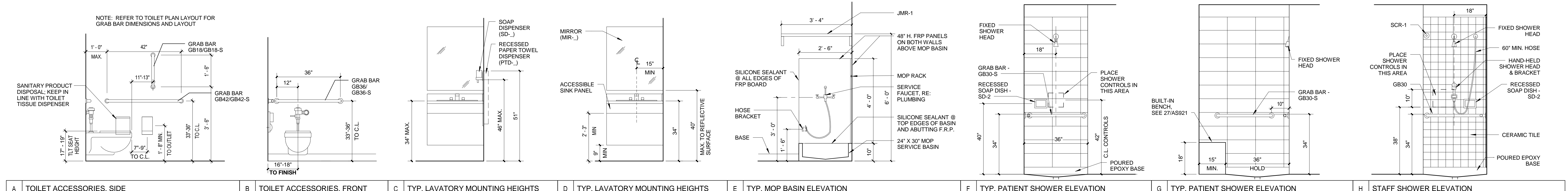
8 TOILET
1/4" = 1'-0"



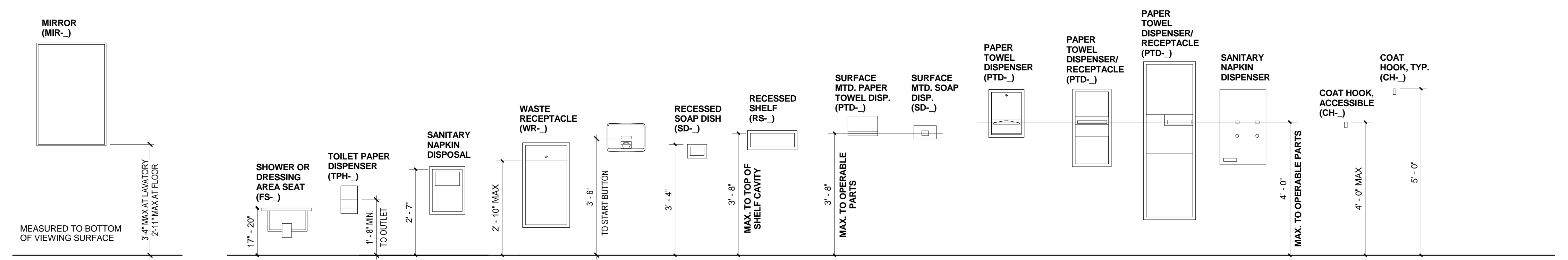
9 TOILET - TYPICAL
1/4" = 1'-0"

ACCESSORY MOUNTING DIAGRAM FOR MINIMUM ADA GUIDELINES
SCALE: 1/2" = 1'-0"

INFORMATION HERE IS FOR REFERENCE ONLY. ANY DIMENSIONS, NOTES, TEXT OR FINISHES ON ARCHITECTURAL PLANS OVERRIDES THE INFORMATION FOUND ON THIS SHEET.



A TOILET ACCESSORIES, SIDE B TOILET ACCESSORIES, FRONT C TYP. LAVATORY MOUNTING HEIGHTS D TYP. LAVATORY MOUNTING HEIGHTS E TYP. MOP BASIN ELEVATION F TYP. PATIENT SHOWER ELEVATION G TYP. PATIENT SHOWER ELEVATION H STAFF SHOWER ELEVATION



ACCESSORY LEGEND

CH-	COAT HOOK
FS-	FOLDING SHOWER SEAT
GB-	GRAB BAR (NUMBER INDICATES LENGTH)
GB-S	SECURITY GRAB BAR (NUMBER INDICATES LENGTH)
JMR-	MOP RACK
MIR-	METAL FRAMED MIRROR
PTD-	PAPER TOWEL DISPENSER
RS-	RECESSED SHELF
SCR-	SHOWER CURTAIN ROD
SD-	SOAP DISPENSER
SND-	SANITARY NAPKIN DISPOSAL
SS-	STAINLESS STEEL SHELF
TPH-	TOILET TISSUE DISPENSER
WR-	WASTE RECEPTACLE

TYPICAL PATIENT TOILET FLOOR SLOPES
NOTE: 0" = ELEVATION 100'-0"

REFER TO SPECIFICATION SECTION 10 28 00 FOR SPECIFIC FIXTURE TYPES

**100% OWNER REVIEW
NOT FOR CONSTRUCTION
12/18/2011**



RSP Architects
1220 Marshall Street NE
Minneapolis
Minnesota 55413-1036
612.677.7100
612.677.7499 fax
www.rsparch.com

NOTICE: The designs shown and described herein including all technical drawings, graphics, and models herein, are proprietary and cannot be copied, duplicated or commercially exploited, in whole or in part, without express written permission of RSP Architects. These are available for limited review and evaluation by clients, consultants, contractors, government agencies, vendors and office personnel only in accordance with this Notice.

© Copyright RSP Architects 2011. All rights reserved.



CONSULTANTS:

Structural
Van Sickle, Allen & Assoc.
2955 Xenium Lane N
Suite 1100
Plymouth, MN 55441

Fire Protection
Gary Travins Associates
Engineering
34 Boston Hill
Larksville, PA 18651-3298

MEP
Dunham Associates
50 South Sixth Street
Suite 1100
Minneapolis, MN 55402

Landscape
Damon Farbar Assoc.
923 Nicollet Mall
Minneapolis, MN 55402

I hereby certify that this plan, specification or report was prepared by me or under my direct supervision and that I am a duly licensed Architect under the laws of the State of Minnesota.

Signature _____
Registration No. _____
Date _____

APPROVED SERVICE LINE DIRECTOR	DATE	APPROVED INFECTION CONTROL NURSE	DATE
APPROVED GEMS COORDINATOR	DATE	APPROVED PATIENT SAFETY	DATE
APPROVED PROJECTS SECTION MANAGER	DATE	APPROVED CHIEF OF POLICE	DATE
APPROVED DIRECTOR FMS	DATE	APPROVED SAFETY MANAGER	DATE

DRAWING TITLE ENLARGED PLANS			
APPROVED CHIEF OF STAFF	DATE	APPROVED MEDICAL CENTER DIRECTOR	DATE

PROJECT TITLE LONG TERM / INTERMEDIATE PSYCHIATRIC UNIT			
BUILDING No.	CHECKED BY	DRAWN	DATE
4801 VETERANS DRIVE, ST CLOUD MN	Author	AS801	12/18/2011

DATE	PROJECT NO.	CAD FILE
12/18/2011	1027801.00	

